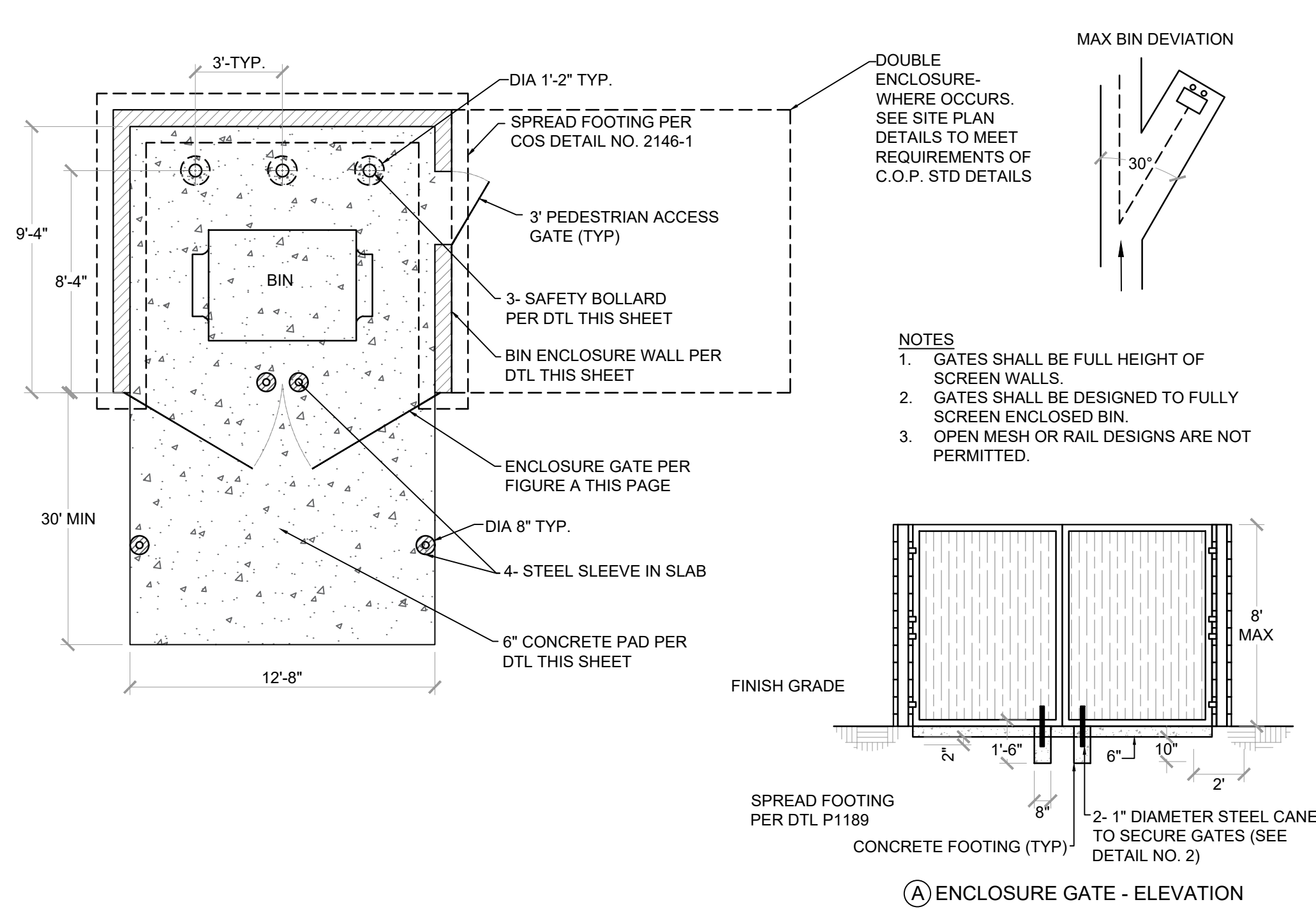


10 LIGHT GROUND MOUNTED FIXTURE
SCALE: 3/8" = 1'-0"



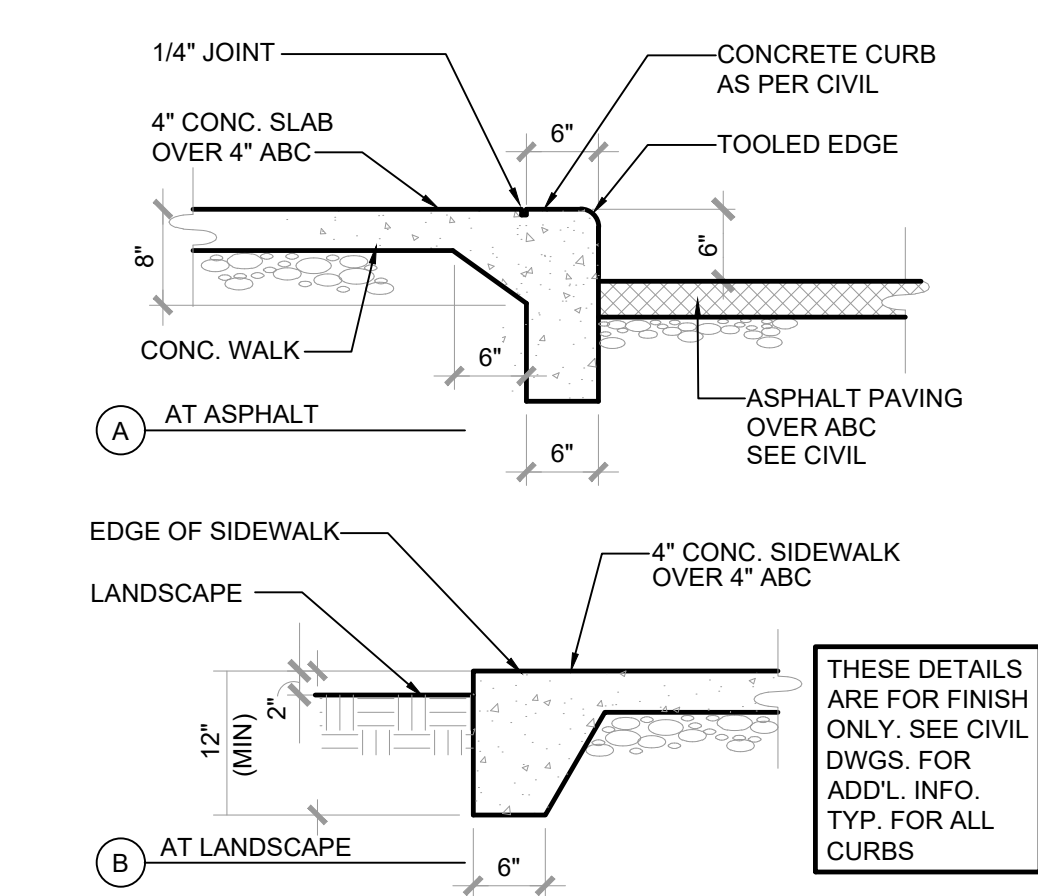
7 TRASH ENCLOSURE
SCALE: 1/2" = 1'-0"

8 TRASH ENCLOSURE SCREEN WALL
SCALE: 1/2" = 1'-0"

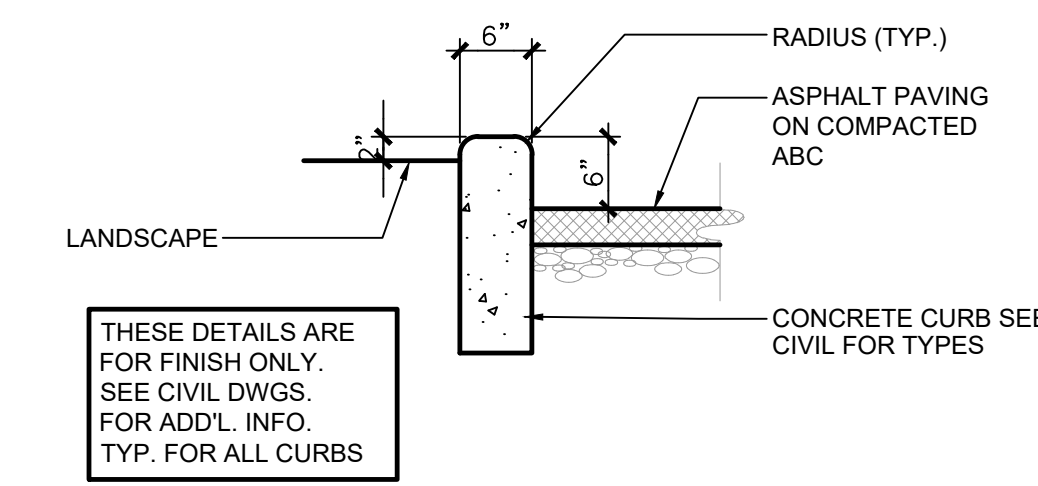


9 C.O.S. FIRE LANE SIGN
SCALE: 1" = 1'-0"

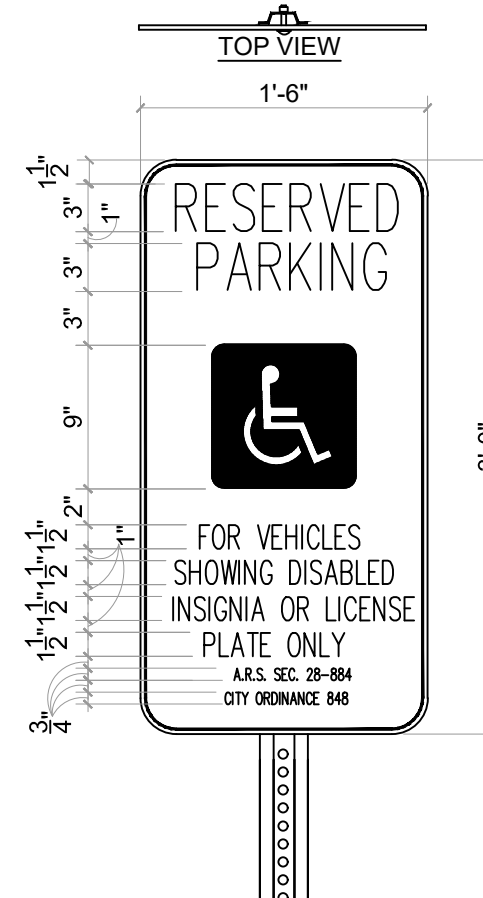
- NOTES:**
- At the beginning and end of the fire lane, the sign shall have a single headed arrow pointing in the direction the regulation is in effect. The intermediate signs shall have double headed arrows pointing in both directions.
 - The maximum spacing of the signs shall be 100', contingent upon Traffic Engineering's review and approval.
 - The signs shall be set at an angle of not less than 30° nor more than 45° with the curb or line of traffic flow.
 - The clearance to the bottom of the sign shall be 7 feet. There shall be no other signs attached to the sign or the sign pole.
 - The sign substrate shall be a minimum of 12" x 18" treated aluminum with a thickness of 0.080".
 - The sign face shall have a white, ASTM Type IV reflective background with a red screen, printed or translucent acrylic EC overlay film reflective legend. Use the standard sign face number R7-32 or equivalent incorporating additional information to complete the sign as shown.



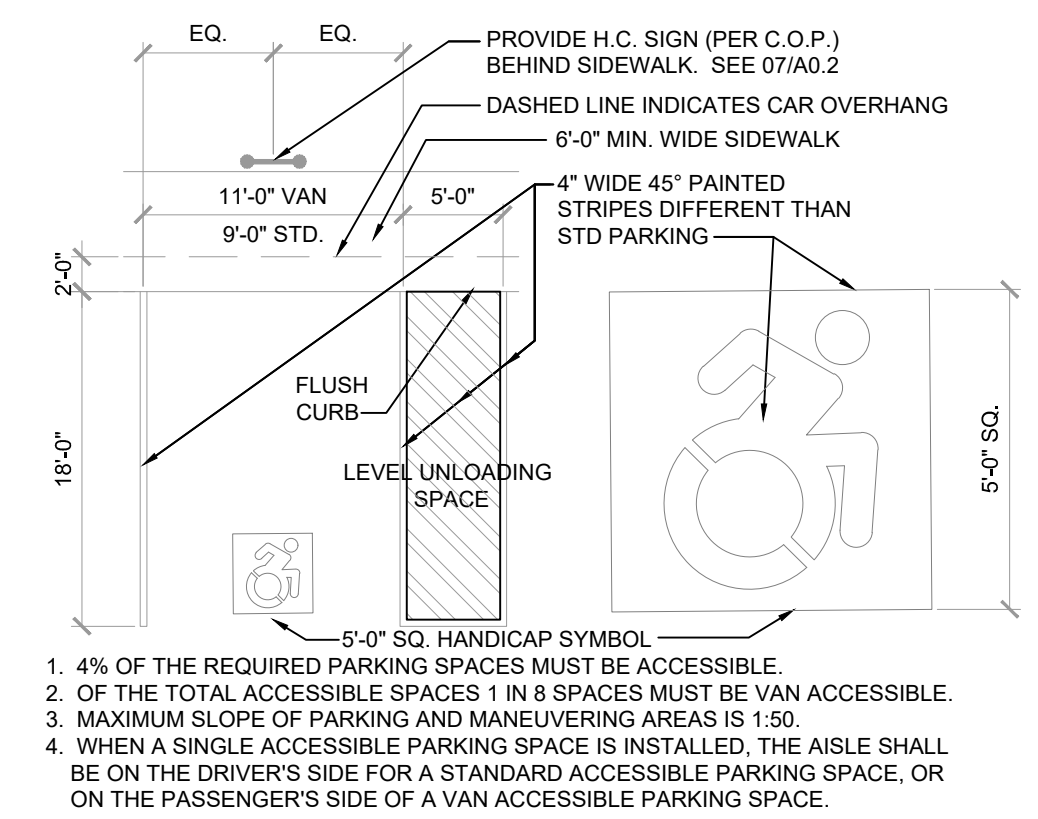
5 SIDEWALK CURB / TURNDOWN
SCALE: 3/4" = 1'-0"



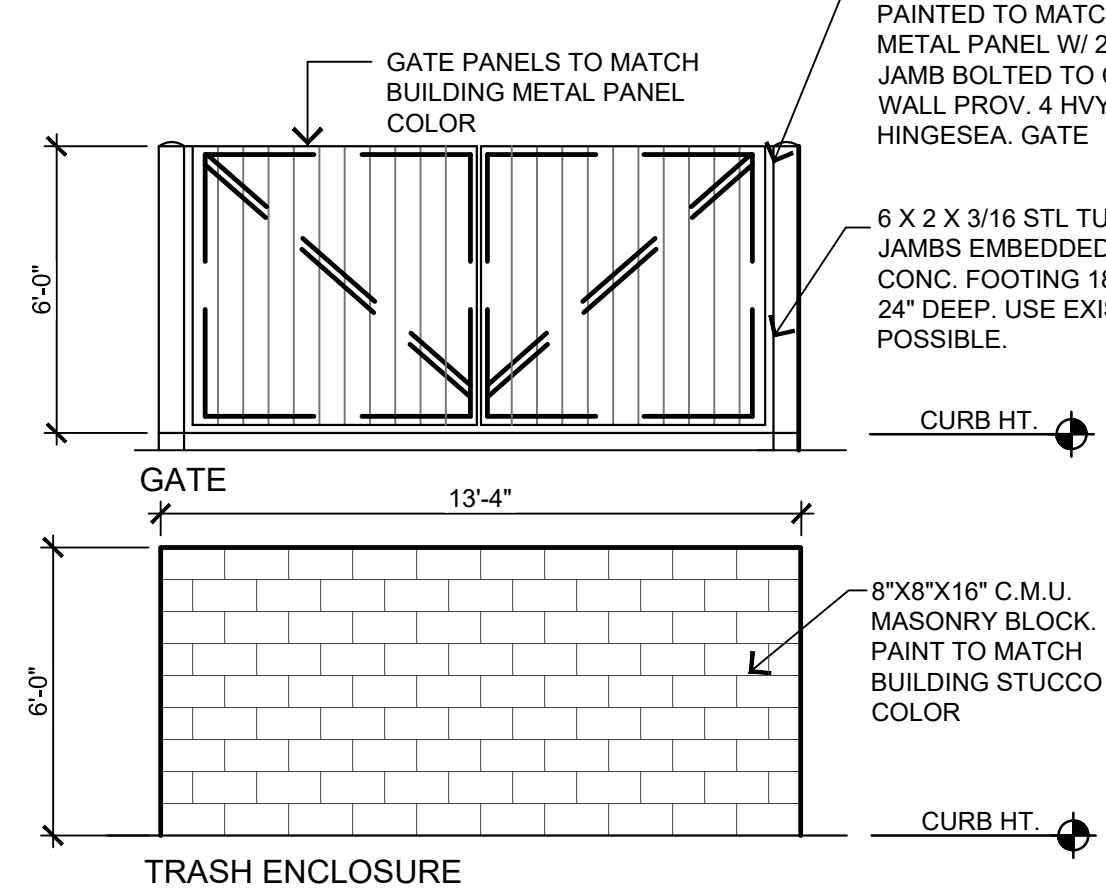
6 CONC. CURBS
SCALE: 1 1/2" = 1'-0"



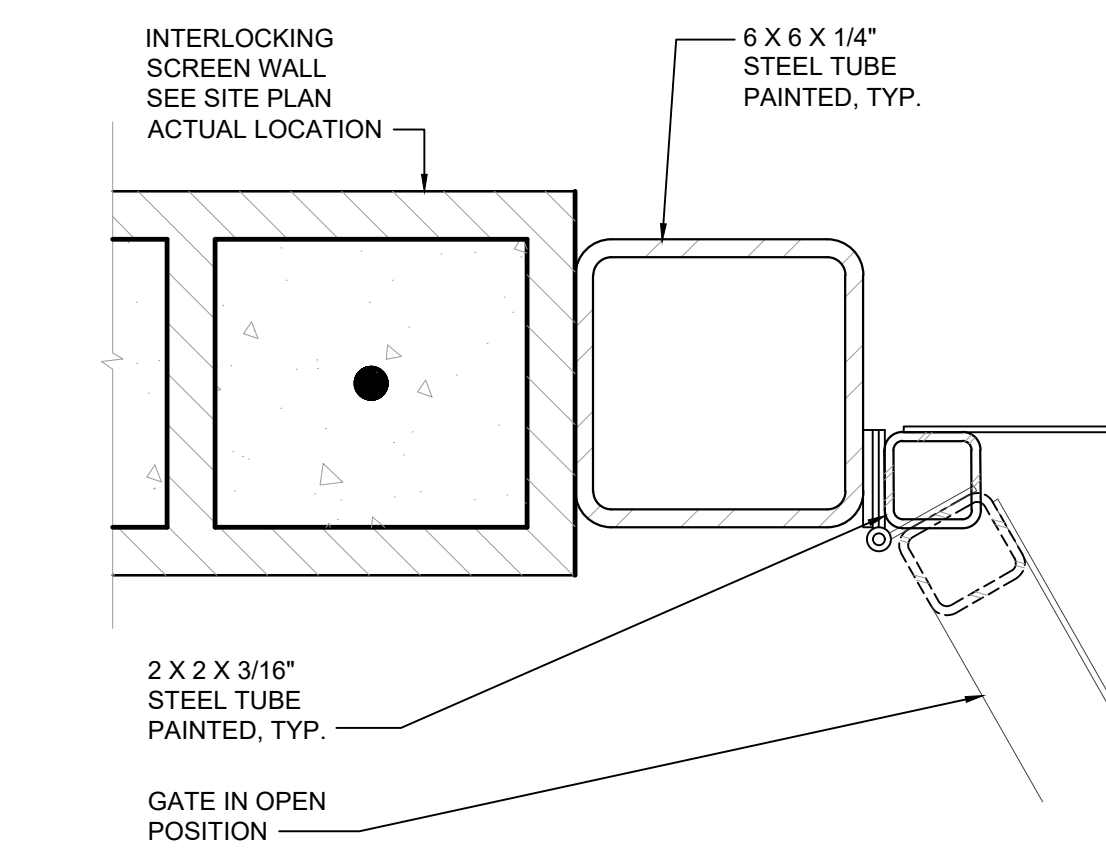
7 ACCESSIBLE PARKING SIGN
SCALE: 1" = 1'-0"



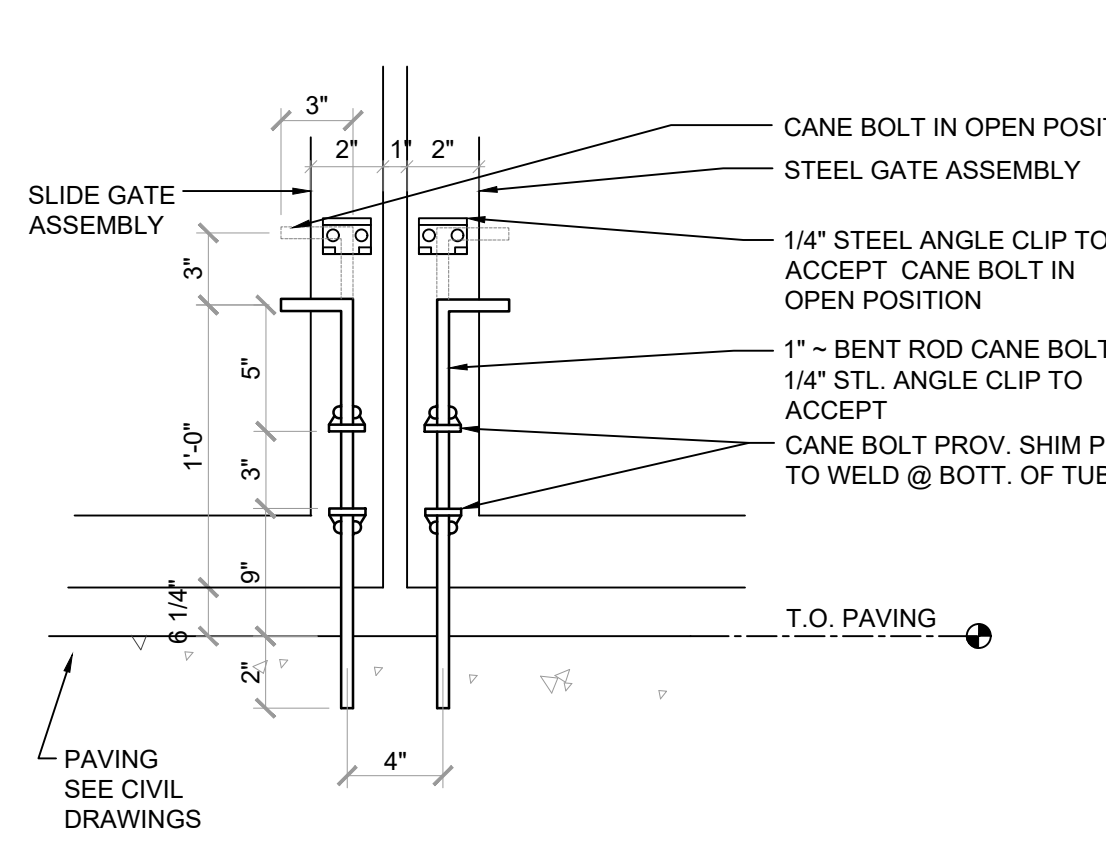
8 HANDICAP SYMBOL
SCALE: 3/8" = 1'-0"



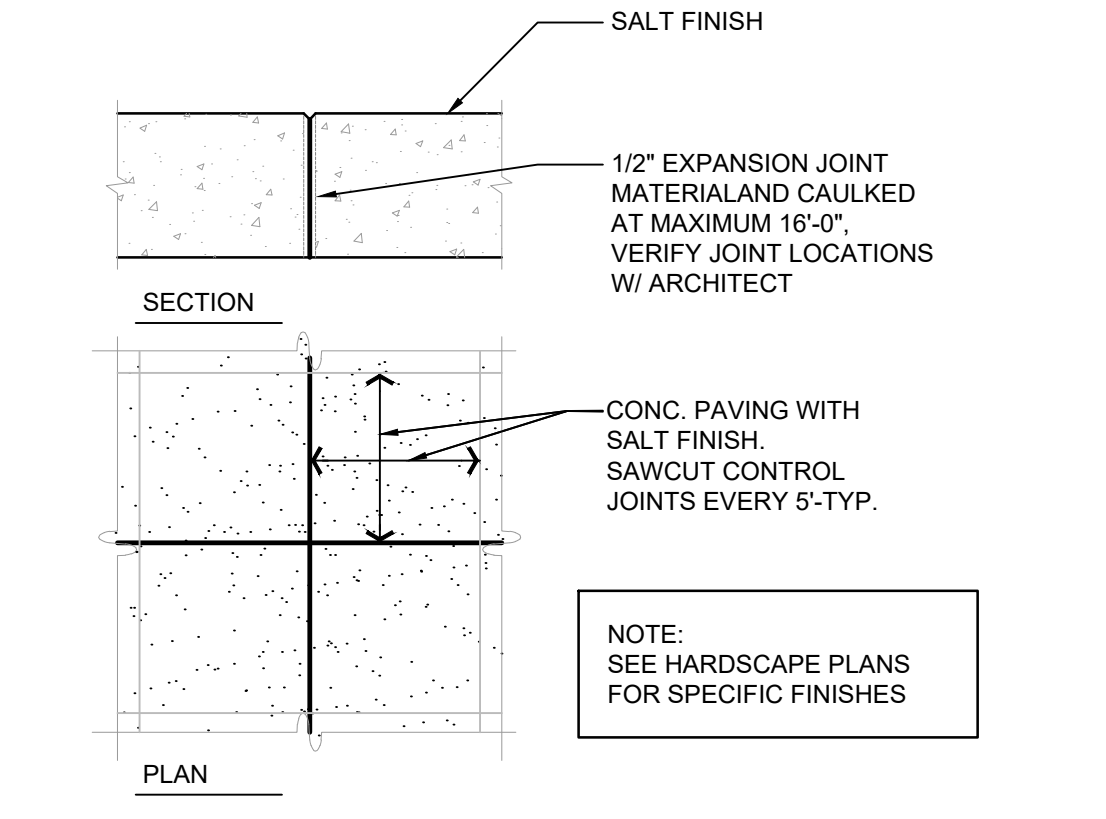
1 TRASH ENCLOSURE ELEVATION
SCALE: 1/4" = 1'-0"



2 SWING GATE JAMB DETAIL
SCALE: 3" = 1'-0"



3 GATE CANE BOLT DETAIL
SCALE: 3" = 1'-0"



4 CONC. WALK FINISH DETAIL
SCALE: 1 1/2" = 1'-0"



2039 E RICE DR., TEMPE
AZ, 85283
480-589-3793
VINCE@DALKEDESIGNGROUP.COM



McDOWELL PICKLE LLC.
PICKLE & POUR
7300 E. McDOWELL RD
SCOTTSDALE, AZ

NUMBER REVISION DATE

SEAL



SHEET TITLE
SITE DETAILS

ISSUE DATE 11/15/23
DRAWN KAW
CHECKED BY VJD
PROJECT NUMBER -

DRAWING NO.

A0.2

REV

10.30.2023