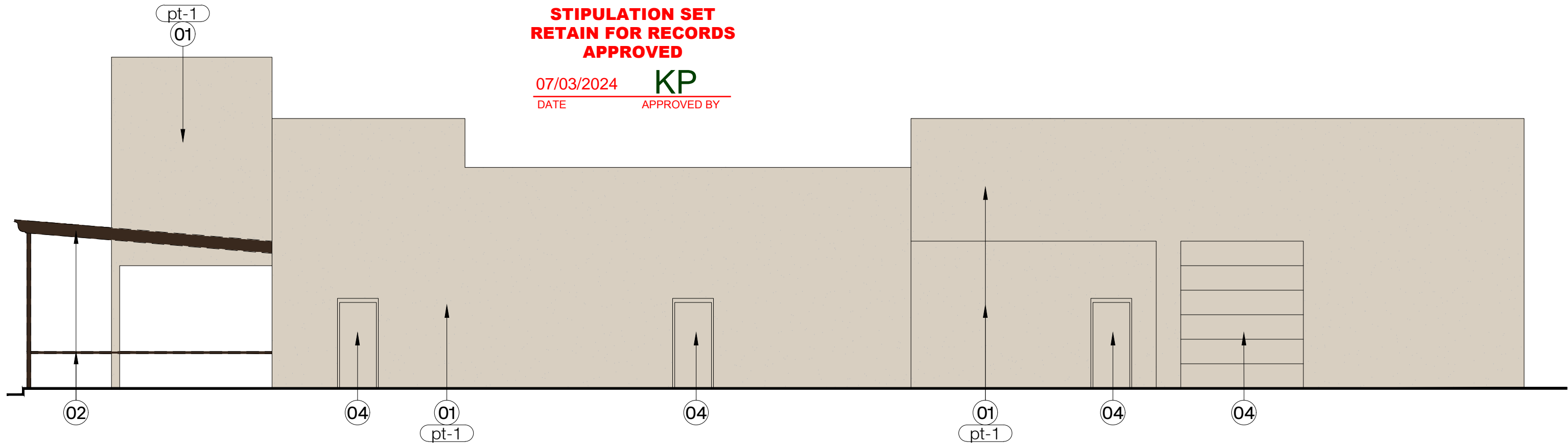
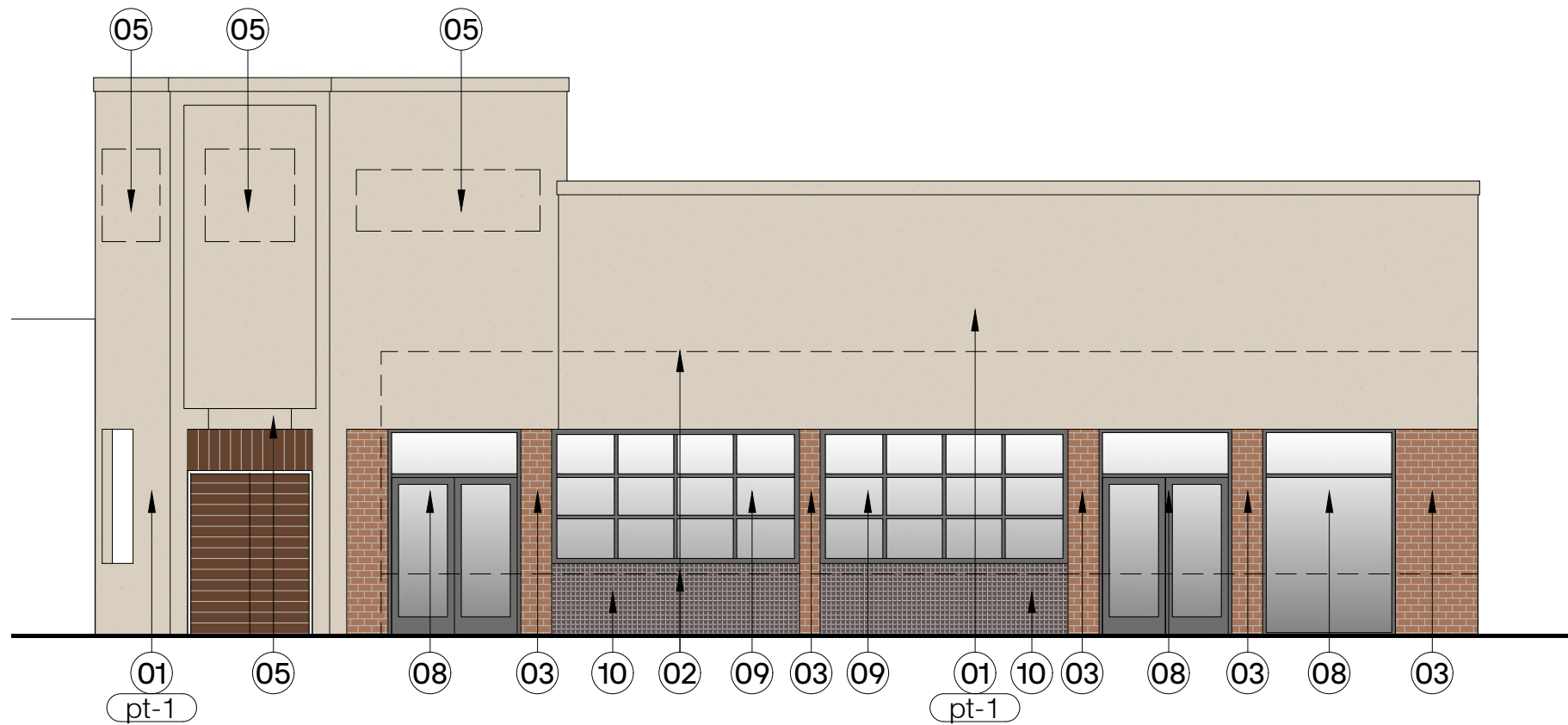


COLOR ELEVATIONS - NORTH AND EAST



02 . NORTH ELEVATION

1/8" = 1'-0"



01 . EAST ELEVATION

1/8" = 1'-0"

EXTERIOR FINISHES

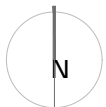
pt-1: exterior paint by dunn edwards
color: 'fine grain' de6213

KEYNOTES - EXTERIOR ELEVATIONS

1. ex. stucco to be painted 'fine grain' de6213 by dunn edwards
2. ex. patio shade structure and patio railing to be painted to match existing. existing color is dark granite.
3. ex. exposed brick veneer to remain unpainted
4. ex. door to be painted to match adjacent
5. ex. signage to remain - masked off and painted around
6. ex. gas meter to remain
7. ex. ses to remain
8. ex. storefront beyond to remain
9. ex. garage door beyond to remain
10. ex. exterior bar face tile to remain

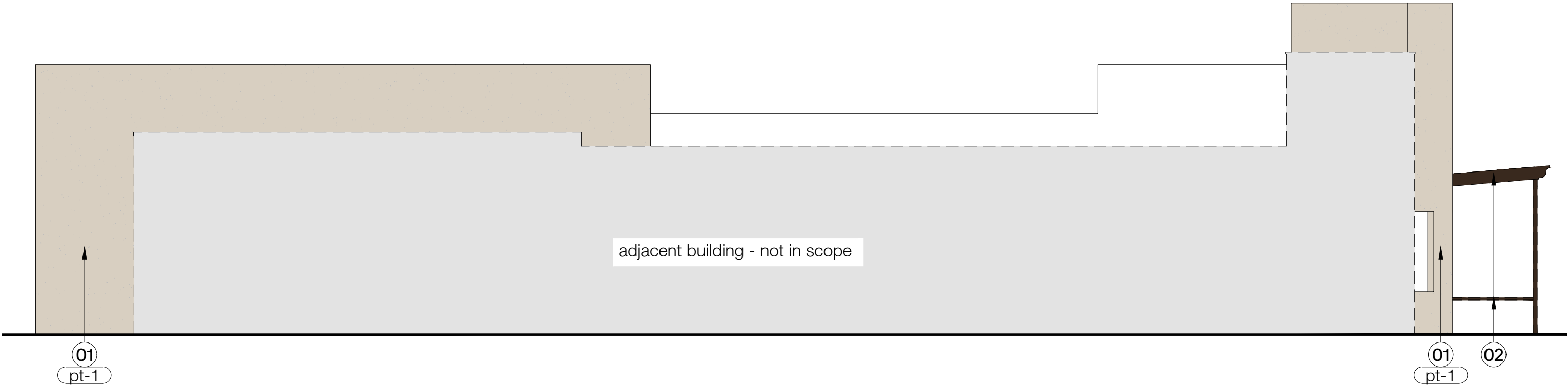
4222 N. SCOTTSDALE RD.
SCOTTSDALE, AZ 85251
JUNE 17, 2024
SCALE: 1/8" = 1'-0"

7340 EAST MAIN STREET #210
SCOTTSDALE, ARIZONA 85251
MADE WITH ALINE . COM



ALINE
ARCHITECTURE CONCEPTS

CBCB OLD TOWN - REPAINT



02 . SOUTH ELEVATION

1/8" = 1'-0"

EXTERIOR FINISHES

pt-1: exterior paint by dunn edwards
color: 'fine grain' de6213

KEYNOTES - EXTERIOR ELEVATIONS

1. ex. stucco to be painted 'fine grain' de6213 by dunn edwards
2. ex. patio shade structure and patio railing to be painted to match existing.
3. ex. exposed brick veneer to remain unpainted
4. ex. door to be painted to match adjacent
5. ex. signage to remain - masked off and painted around
6. ex. gas meter to remain - do not paint - paint wall behind
7. ex. ses to remain - do not paint - paint wall behind
8. ex. storefront beyond to remain
9. ex. garage door beyond to remain
10. ex. exterior bar face tile to remain

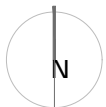


01 . WEST ELEVATION

1/8" = 1'-0"

4222 N. SCOTTSDALE RD.
SCOTTSDALE, AZ 85251
JUNE 17, 2024
SCALE: 1/8" = 1'-0"

7340 EAST MAIN STREET #210
SCOTTSDALE, ARIZONA 85251
MADE WITH ALINE . COM



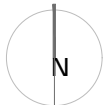
ALINE
ARCHITECTURE CONCEPTS

EXISTING CONDITIONS PHOTO LEGEND



4222 N. SCOTTSDALE RD.
SCOTTSDALE, AZ 85251
JUNE 17, 2024
SCALE: NTS

7340 EAST MAIN STREET #210
SCOTTSDALE, ARIZONA 85251
MADEWITHALINE.COM



EXISTING CONDITION PHOTOS



(a) - south elevation - view obscured by b&b lounge



(b) - east elevation



(c) - east elevation



(d) - northeast corner - partial north elevation



(e) - north elevation - partial



(f) - west elevation



(g) - southwest corner

4222 N. SCOTTSDALE RD.
SCOTTSDALE, AZ 85251
JUNE 17, 2024

7340 EAST MAIN STREET #210
SCOTTSDALE, ARIZONA 85251
MADEWITHALINE.COM

