

**Construction Package for Cold Formed Steel Building**  
**Created for Tyler Pencek**  
**Job Number TWPH 94809422**



**Table Of Contents**

Building Layout Plan .....	3
Concrete Anchor Details .....	4
Portal Frame Sections .....	6
Roof Framing Plan .....	14
Girt Layout .....	17
Sheeting Layout .....	26

## **Construction Package Notes**

This construction package is to be used in conjunction with the created order for the job. All lengths and piece marks of materials in this package will correspond to an item in the order. For example, on the Sidewall A girt layout, there will likely be an item with a piece mark of SGA1. This will correspond to a line item in the order with the piece mark of SGA1. Products that do not include a piece mark will be marked with the product code.

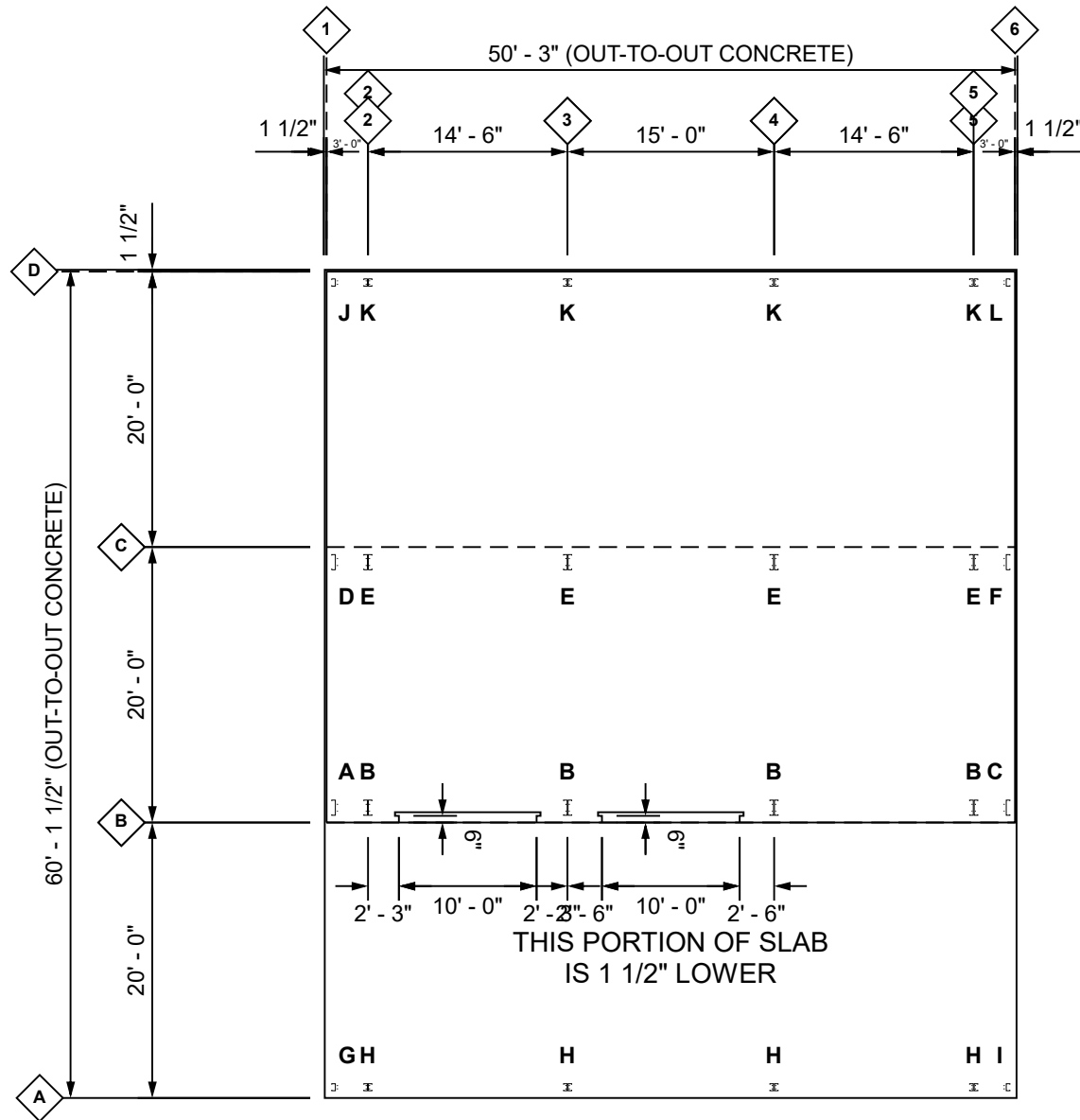
All girt layout and sheeting layouts drawings in this construction package are exterior views, and in these illustrations, components are drawn as if viewed from the outside of the building.

All drawings in this construction package are for reference only, and are to be used to supplement the engineering drawings. If any discrepancies occur, the engineering plans will always take precedence.

## **Construction Notifications**

The following items will require non-typical installation that will take extra time and care during the construction process. Please take precautions.

- Leanto Rafter Connector is used in this building configuration. Where the main building has wall sheeting installed under the leanto roof the leanto framing should not be installed until after the main building wall sheeting is installed. Please see your engineering plans and Appendix B – Leanto Rafter Installation for specific installation instructions and illustrations.
- Some items in order will need to be cut to length on site. Please see 'Notes' column in order for full list of items to be cut and their lengths.



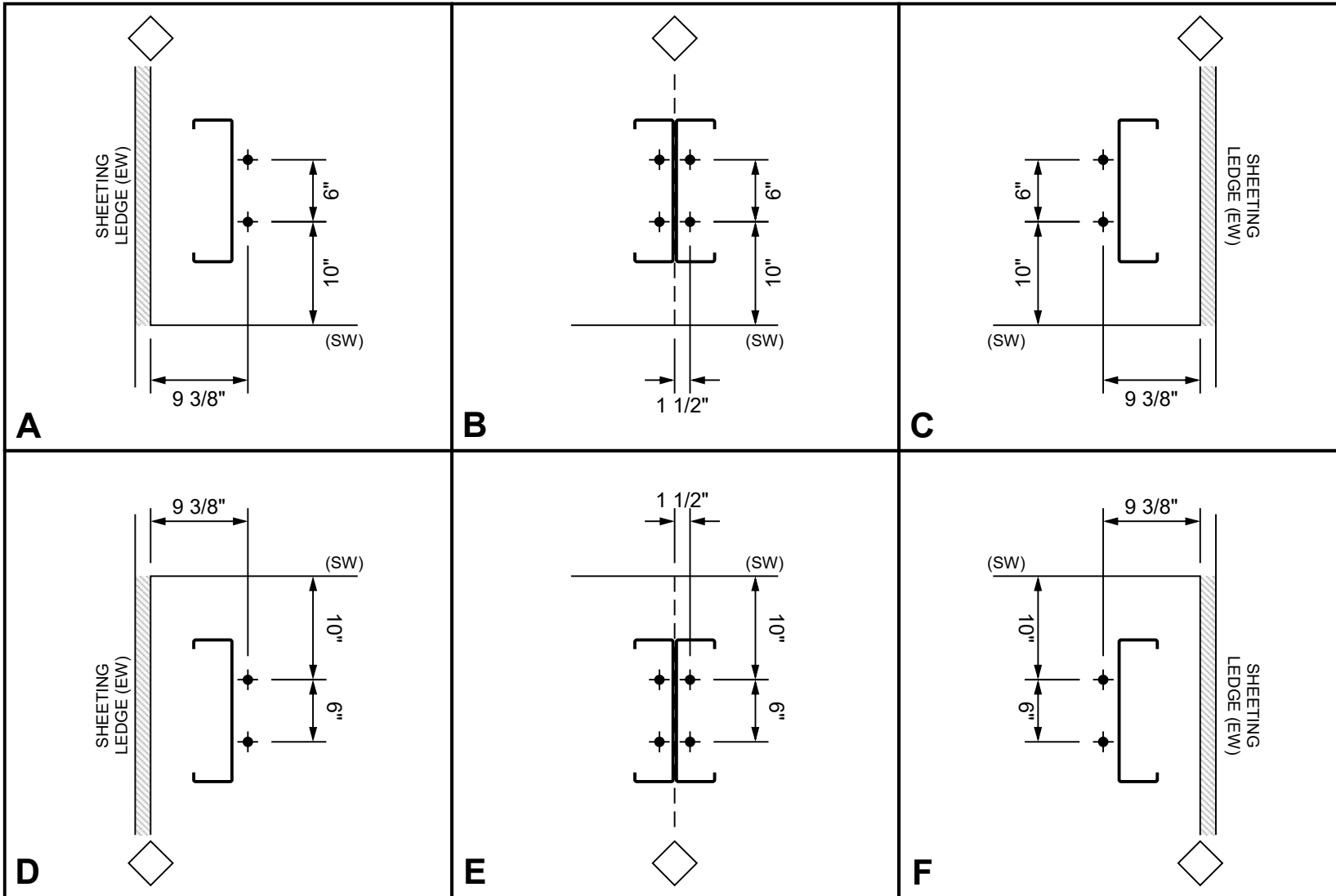
ANCHOR BOLTS		
QTY	LOCATION	DIA
80	SIDEWALL COLUMNS	1/2"
22	DOOR JAMB	1/2"
8	GIRT FLANGE BRACING	1/2"

This illustration is for reference only, and is to be used to supplement the engineering drawings. If any discrepancies occur, the engineering plans will always take precedence.

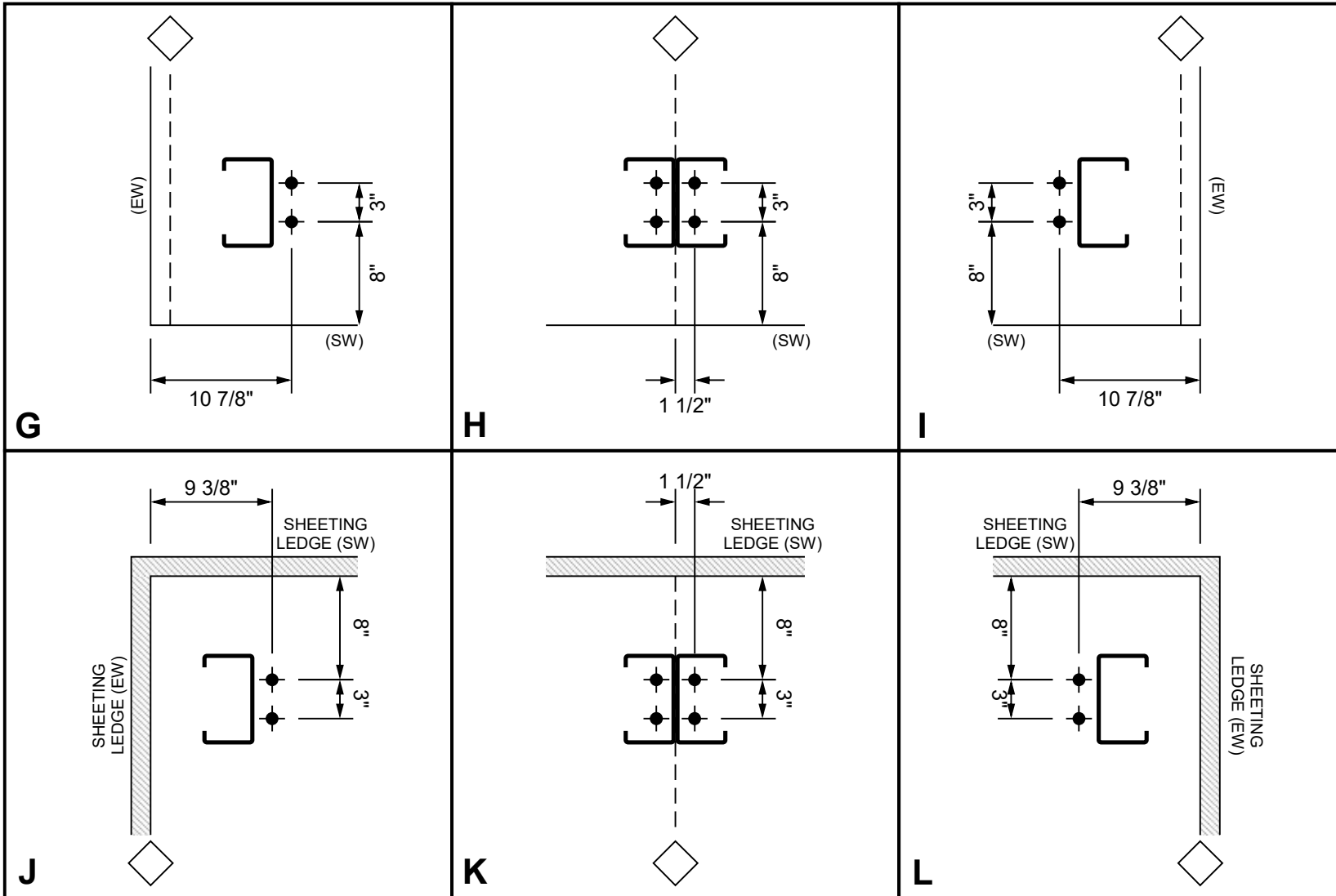


## Building Layout Plan



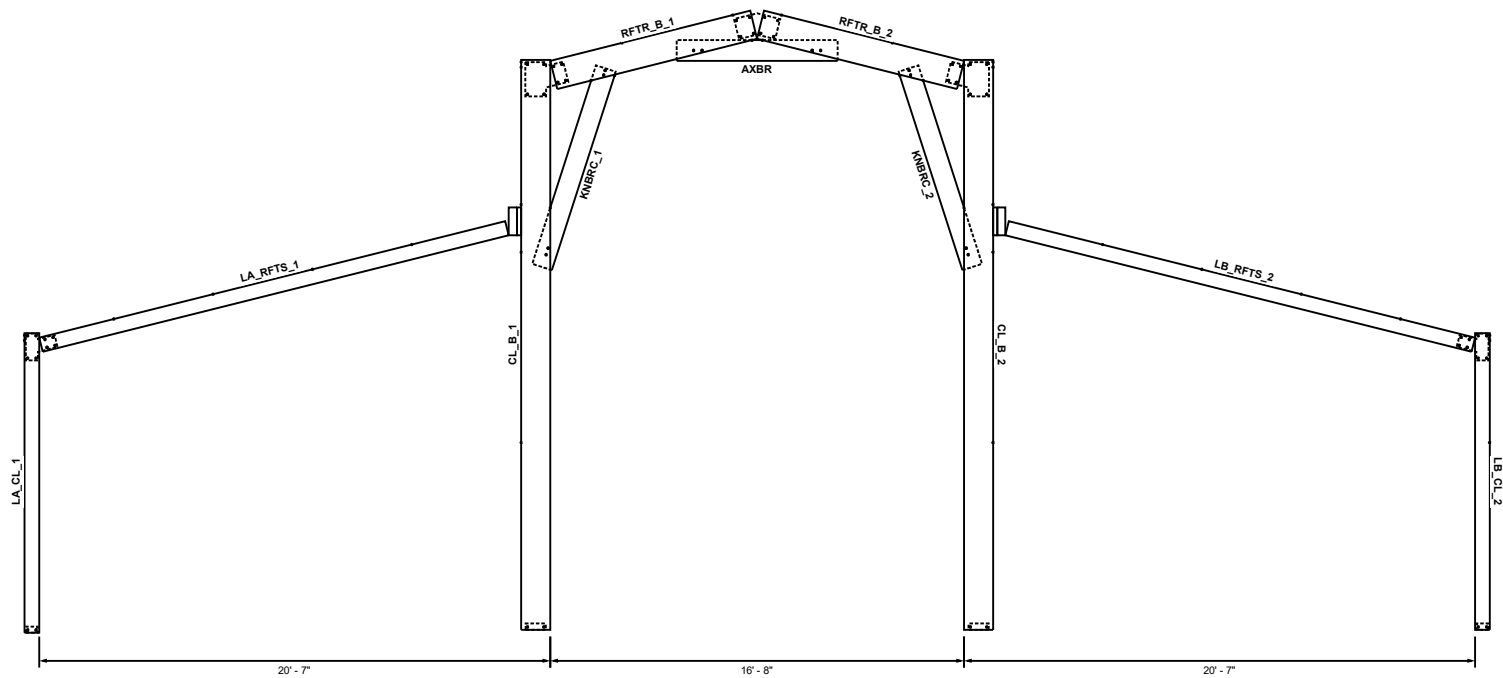


This illustration is for reference only, and is to be used to supplement the engineering drawings. If any discrepancies occur, the engineering plans will always take precedence.



This illustration is for reference only, and is to be used to supplement the engineering drawings. If any discrepancies occur, the engineering plans will always take precedence.

Member Table		
Mark	Product	Length
AXBR	10" x 12ga. CEE	6' - 5 7/8"
CL_B_1	14" x 12ga. CEE	22' - 11 1/4"
CL_B_2	14" x 12ga. CEE	22' - 11 1/4"
KNBRC_1	10" x 12ga. CEE	8' - 4 11/16"
KNBRC_2	10" x 12ga. CEE	8' - 4 11/16"
LA_CL_1	7" x 12ga. CEE	12' - 0 3/4"
LA_RFTS_1	7" x 12ga. CEE	19' - 4 1/4"
LB_CL_2	7" x 12ga. CEE	11' - 11 1/4"
LB_RFTS_2	7" x 12ga. CEE	19' - 4 1/4"
RFTR_B_1	14" x 12ga. CEE	8' - 3 9/16"
RFTR_B_2	14" x 12ga. CEE	8' - 3 9/16"

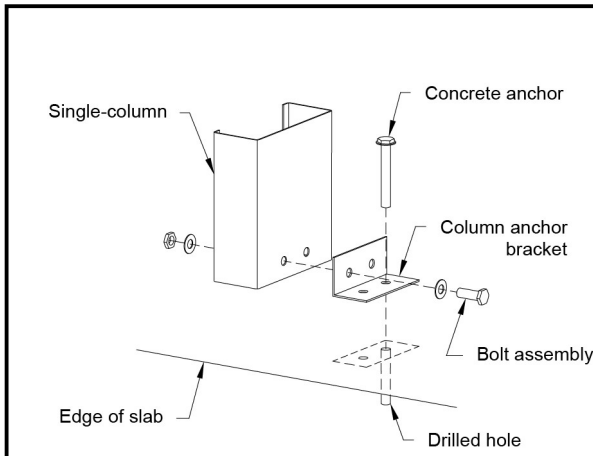


This illustration is for reference only, and is to be used to supplement the engineering drawings. If any discrepancies occur, the engineering plans will always take precedence.



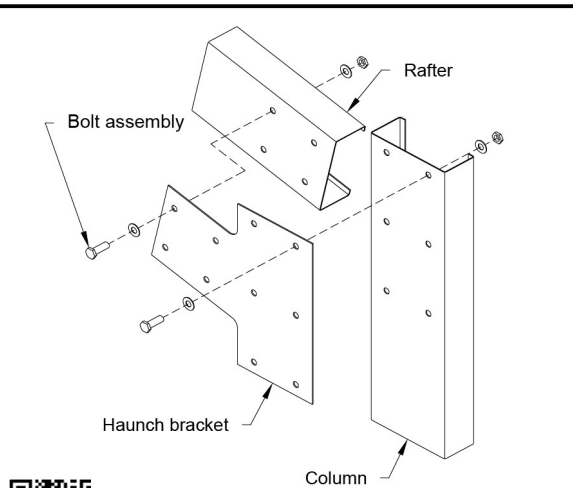
## Portal Section, Frame Line 1





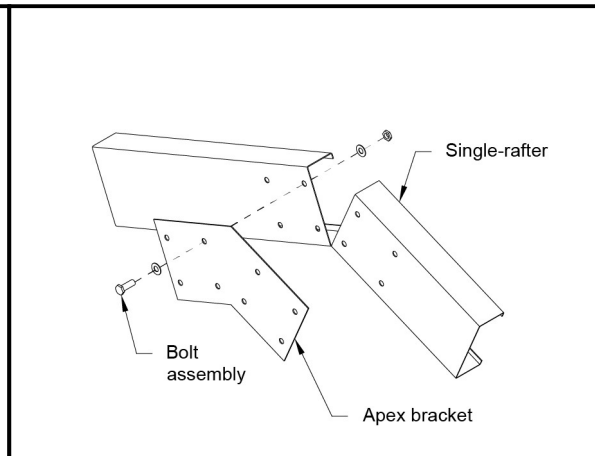
**Single Base Bracket**

<https://r.actbs.com/g/abs525>



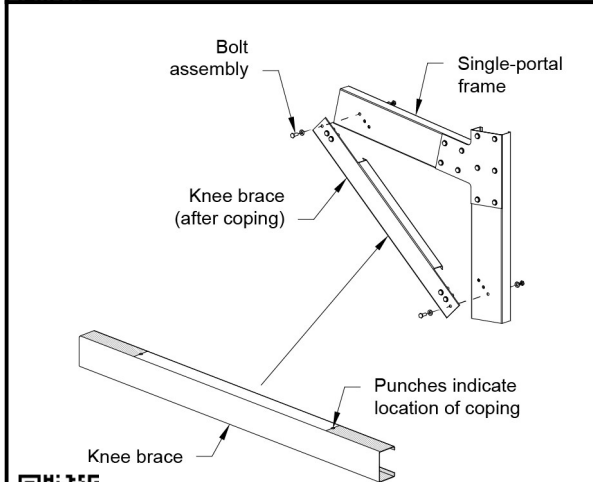
**Single Haunch Bracket**

<https://r.actbs.com/g/abs265>



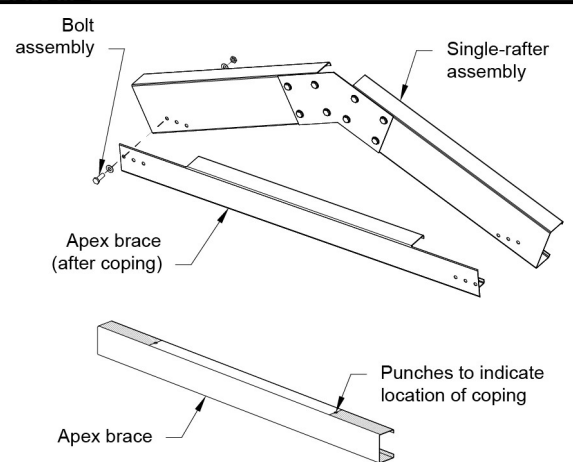
**Single Apex Bracket**

<https://r.actbs.com/g/abs021>



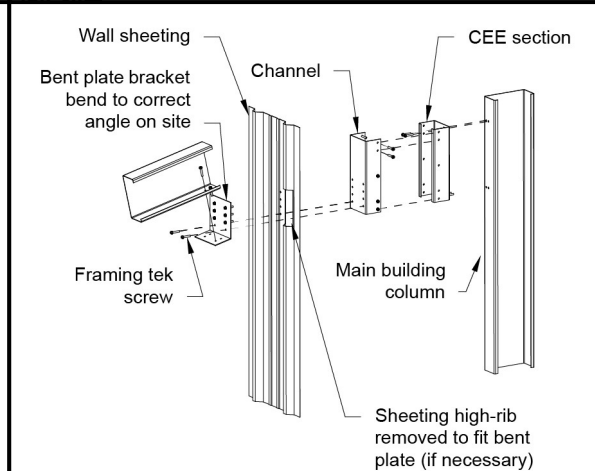
**Single Knee Brace**

<https://r.actbs.com/g/abs289>



**Single Apex Brace**

<https://r.actbs.com/g/abs009>



**LT Rafter to Column Connector**

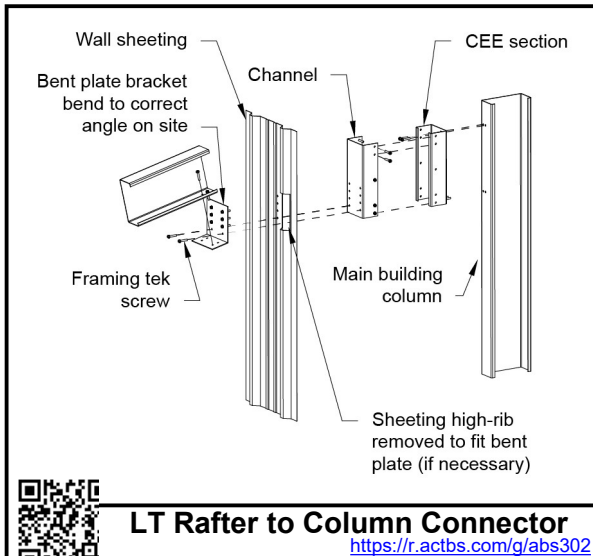
<https://r.actbs.com/g/abs302>



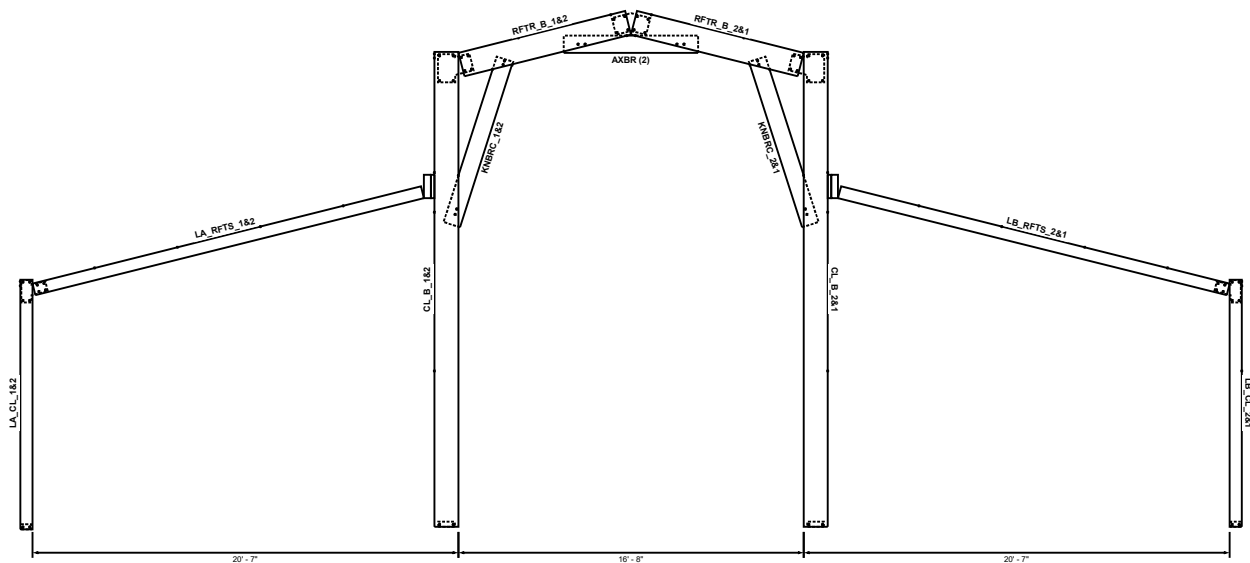
This illustration is for reference only, and is to be used to supplement the engineering drawings. If any discrepancies occur, the engineering plans will always take precedence.

## Portal Details









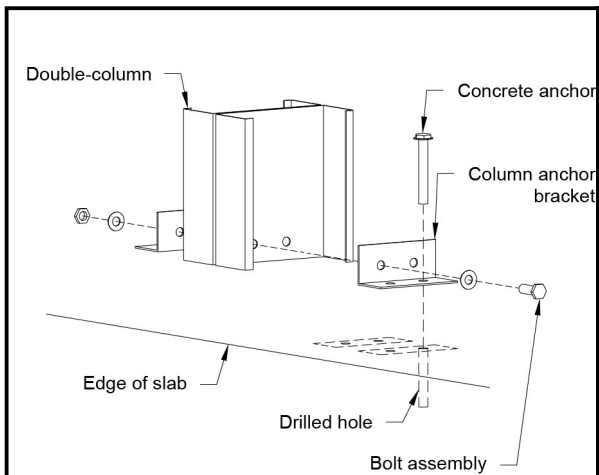
Member Table		
Mark	Product	Length
AXBR	10" x 12ga. CEE	6' - 5 7/8"
CL_B_1	14" x 12ga. CEE	22' - 11 1/4"
CL_B_2	14" x 12ga. CEE	22' - 11 1/4"
KNBRC_1	10" x 12ga. CEE	8' - 4 11/16"
KNBRC_2	10" x 12ga. CEE	8' - 4 11/16"
LA_CL_1	7" x 12ga. CEE	12' - 0 3/4"
LA_CL_2	7" x 12ga. CEE	12' - 0 3/4"
LA_RFTS_1	7" x 12ga. CEE	19' - 4 1/4"
LA_RFTS_2	7" x 12ga. CEE	19' - 4 1/4"
LB_CL_1	7" x 12ga. CEE	11' - 11 1/4"
LB_CL_2	7" x 12ga. CEE	11' - 11 1/4"
LB_RFTS_1	7" x 12ga. CEE	19' - 4 1/4"
LB_RFTS_2	7" x 12ga. CEE	19' - 4 1/4"
RFTR_B_1	14" x 12ga. CEE	8' - 3 9/16"
RFTR_B_2	14" x 12ga. CEE	8' - 3 9/16"

This illustration is for reference only, and is to be used to supplement the engineering drawings. If any discrepancies occur, the engineering plans will always take precedence.



## Portal Section, Frame Lines 2 and 3

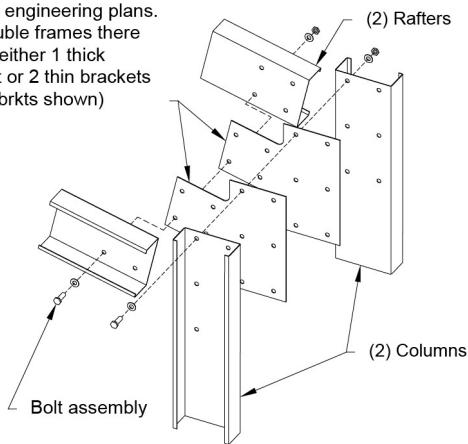




### Double Base Bracket

<https://r.actbs.com/g/abs521>

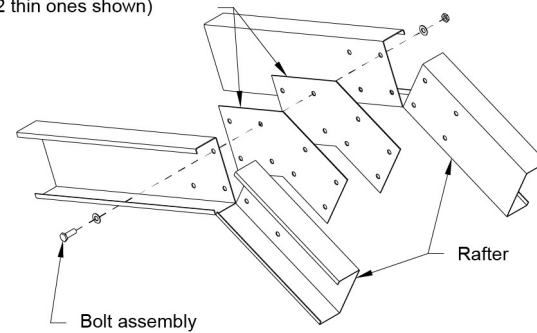
(1 or 2) Haunch brackets, refer to engineering plans. For double frames there will be either 1 thick bracket or 2 thin brackets (2 thin brkts shown)



### Double Haunch Bracket

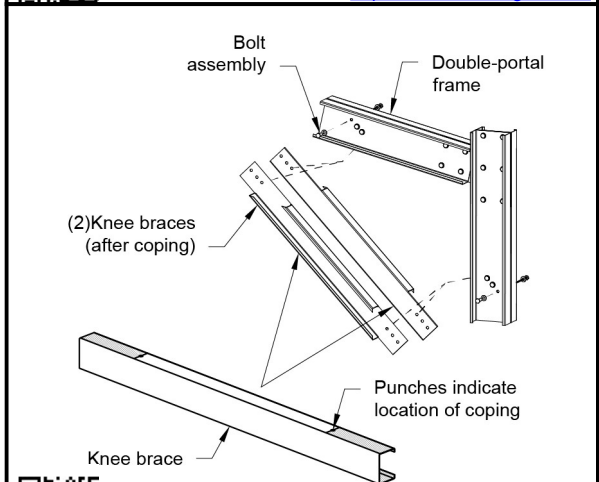
<https://r.actbs.com/g/abs269>

(1 or 2) Apex brackets refer to engineering plans. For double rafters there will be either 1 thick bracket or 2 thin brackets (2 thin ones shown)



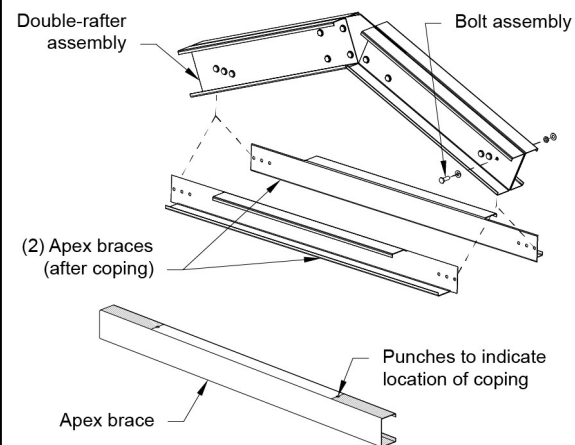
### Double Apex Bracket

<https://r.actbs.com/g/abs017>



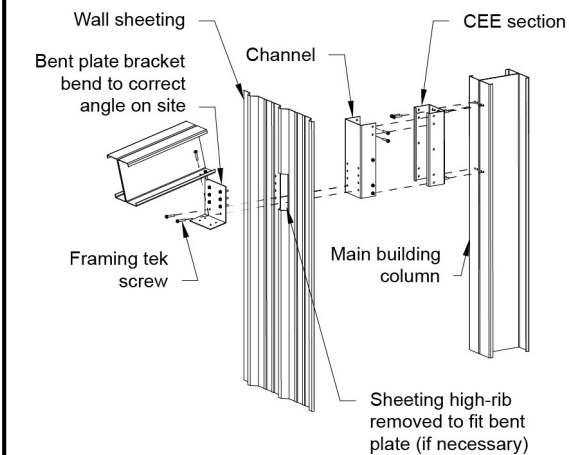
### Double Knee Brace

<https://r.actbs.com/g/abs285>



### Double Apex Brace

<https://r.actbs.com/g/abs001>



### LT Rafter to Column Connector

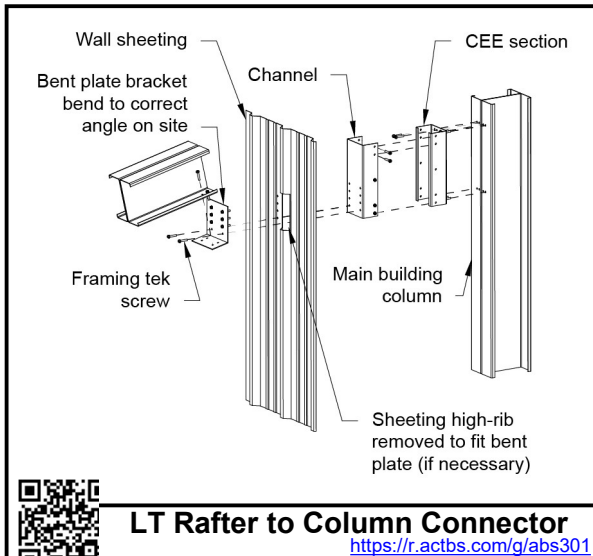
<https://r.actbs.com/g/abs301>

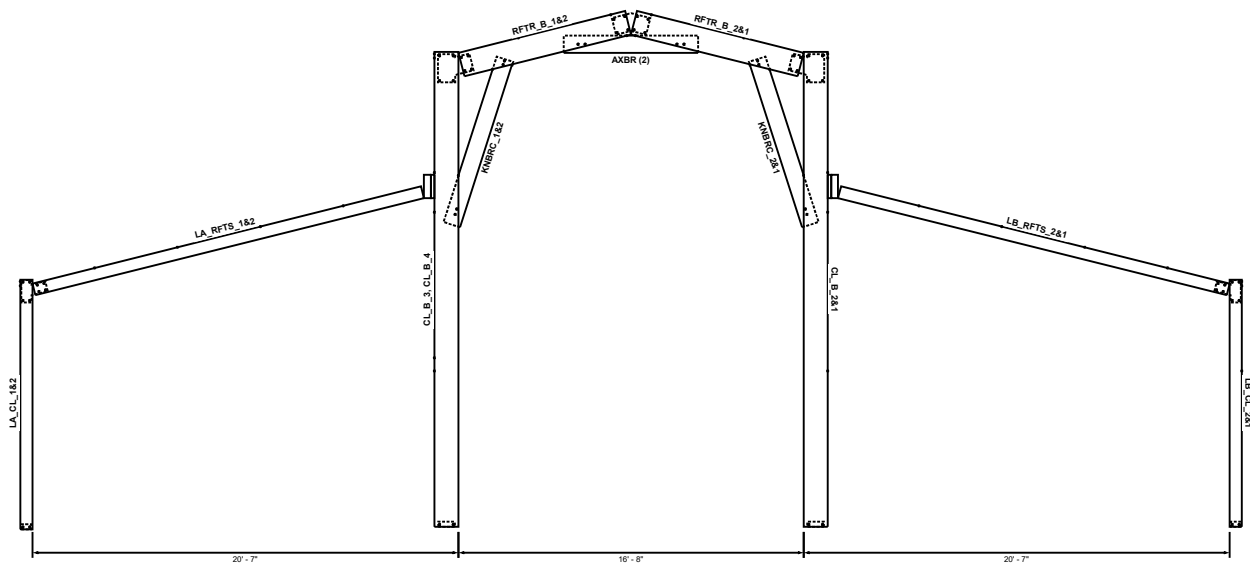


## Portal Details

This illustration is for reference only, and is to be used to supplement the engineering drawings. If any discrepancies occur, the engineering plans will always take precedence.







Member Table		
Mark	Product	Length
AXBR	10" x 12ga. CEE	6' - 5 7/8"
CL_B_1	14" x 12ga. CEE	22' - 11 1/4"
CL_B_2	14" x 12ga. CEE	22' - 11 1/4"
CL_B_3	14" x 12ga. CEE	22' - 11 1/4"
CL_B_4	14" x 12ga. CEE	22' - 11 1/4"
KNBRC_1	10" x 12ga. CEE	8' - 4 11/16"
KNBRC_2	10" x 12ga. CEE	8' - 4 11/16"
LA_CL_1	7" x 12ga. CEE	12' - 0 3/4"
LA_CL_2	7" x 12ga. CEE	12' - 0 3/4"
LA_RFTS_1	7" x 12ga. CEE	19' - 4 1/4"
LA_RFTS_2	7" x 12ga. CEE	19' - 4 1/4"
LB_CL_1	7" x 12ga. CEE	11' - 11 1/4"
LB_CL_2	7" x 12ga. CEE	11' - 11 1/4"
LB_RFTS_1	7" x 12ga. CEE	19' - 4 1/4"
LB_RFTS_2	7" x 12ga. CEE	19' - 4 1/4"
RFTR_B_1	14" x 12ga. CEE	8' - 3 9/16"
RFTR_B_2	14" x 12ga. CEE	8' - 3 9/16"

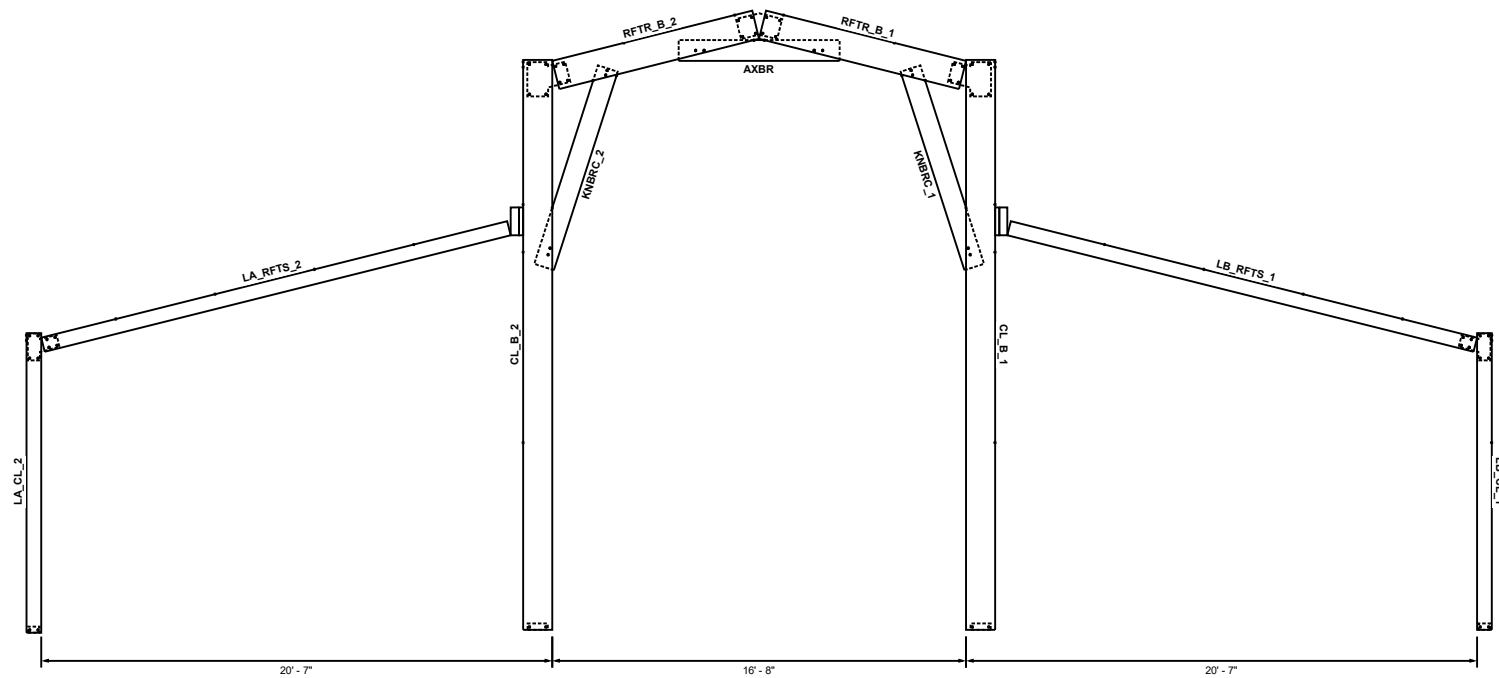
This illustration is for reference only, and is to be used to supplement the engineering drawings. If any discrepancies occur, the engineering plans will always take precedence.



## Portal Section, Frame Lines 4 and 5



Member Table		
Mark	Product	Length
AXBR	10" x 12ga. CEE	6' - 5 7/8"
CL_B_1	14" x 12ga. CEE	22' - 11 1/4"
CL_B_2	14" x 12ga. CEE	22' - 11 1/4"
KNBRC_1	10" x 12ga. CEE	8' - 4 11/16"
KNBRC_2	10" x 12ga. CEE	8' - 4 11/16"
LA_CL_2	7" x 12ga. CEE	12' - 0 3/4"
LA_RFTS_2	7" x 12ga. CEE	19' - 4 1/4"
LB_CL_1	7" x 12ga. CEE	11' - 11 1/4"
LB_RFTS_1	7" x 12ga. CEE	19' - 4 1/4"
RFTR_B_1	14" x 12ga. CEE	8' - 3 9/16"
RFTR_B_2	14" x 12ga. CEE	8' - 3 9/16"

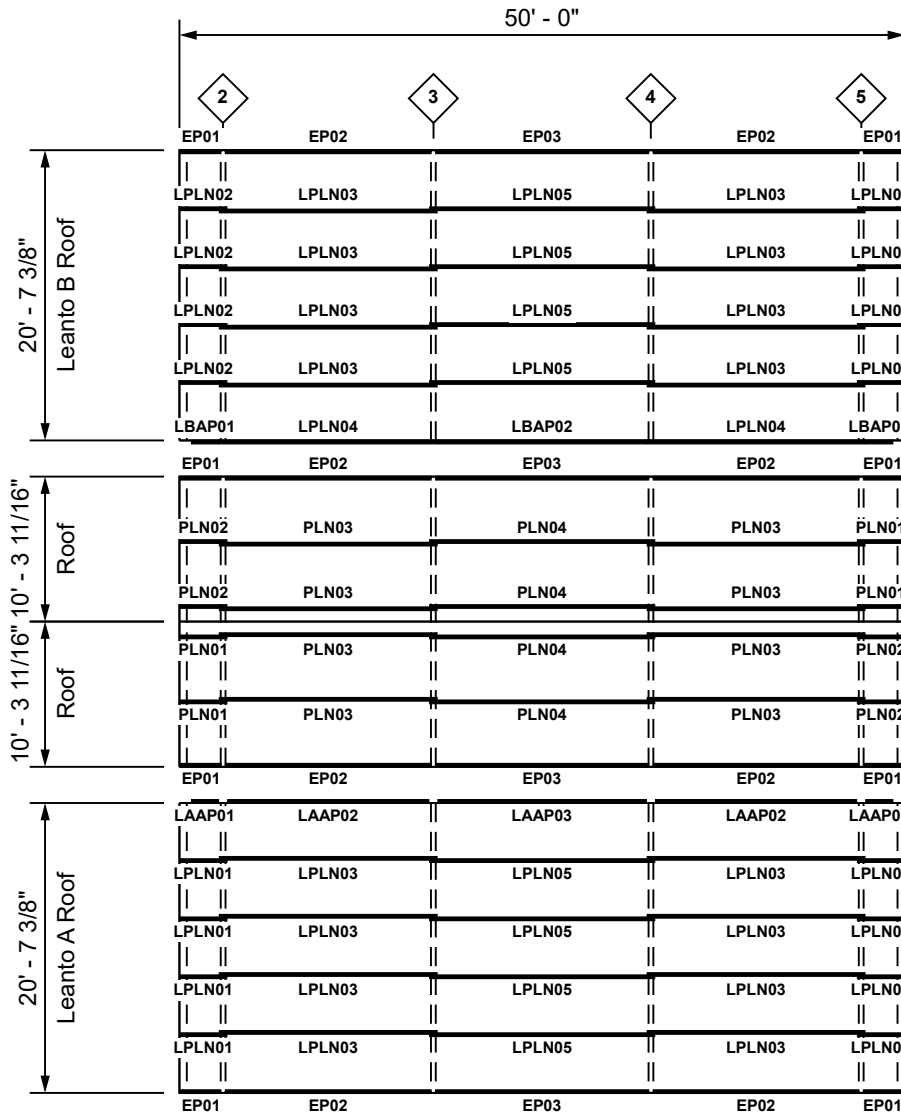


This illustration is for reference only, and is to be used to supplement the engineering drawings. If any discrepancies occur, the engineering plans will always take precedence.



## Portal Section, Frame Line 6





21' - 5 3/16"

10' - 4 1/2"

10' - 4 1/2"

21' - 3 7/8"

Roof Sheeting:  
PBR Panel 26G  
Cocoa Brown

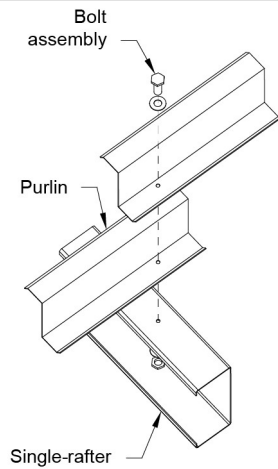
Member Table		
Mark	Product	Length
EP01	6X2.5 14 EAVE	3' - 0"
EP02	6X2.5 14 EAVE	14' - 6"
EP03	6X2.5 14 EAVE	15' - 0"
LAAP01	6X2.5 14 EAVE	1' - 11 3/8"
LAAP02	6X2.5 14 EAVE	13' - 11 3/8"
LAAP03	6X2.5 14 EAVE	14' - 5 3/8"
LBAP01	6X2.5 14 EAVE	1' - 11 3/8"
LBAP02	6X2.5 14 EAVE	14' - 5 3/8"
LPLN01	6" x 14ga. LGSI ZEE	3' - 3 1/2"
LPLN02	6" x 14ga. LGSI ZEE	3' - 3 1/2"
LPLN03	6" x 14ga. LGSI ZEE	15' - 1"
LPLN04	6" x 14ga. LGSI ZEE	15' - 2"
LPLN05	6" x 14ga. LGSI ZEE	15' - 7"
PLN01	6" x 14ga. LGSI ZEE	3' - 3 1/2"
PLN02	6" x 14ga. LGSI ZEE	3' - 3 1/2"
PLN03	6" x 14ga. LGSI ZEE	15' - 1"
PLN04	6" x 14ga. LGSI ZEE	15' - 7"

This illustration is for reference only, and is to be used to supplement the engineering drawings. If any discrepancies occur, the engineering plans will always take precedence.



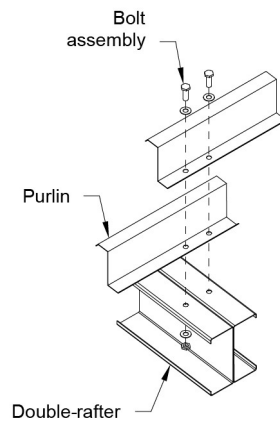
## Roof Framing Plan





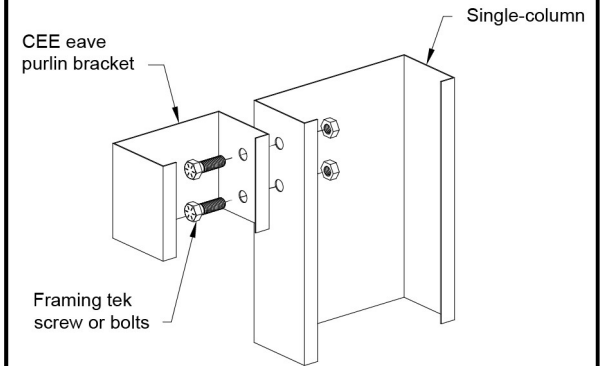
**Purlin Rafter Single**

<https://r.actbs.com/g/abs453>



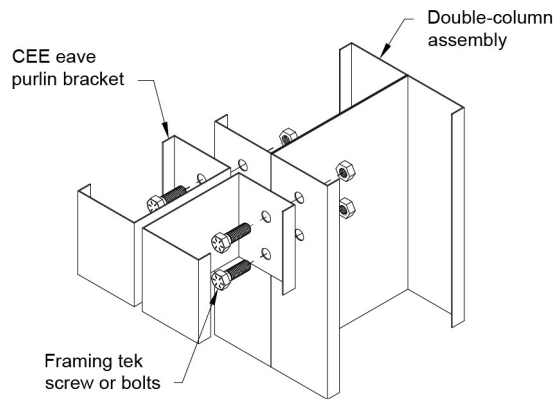
**Purlin Rafter Double**

<https://r.actbs.com/g/abs445>



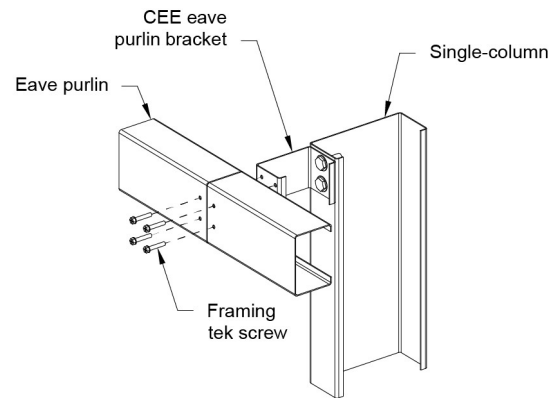
**Eave Purlin Bracket Single CEE**

<https://r.actbs.com/g/abs085>



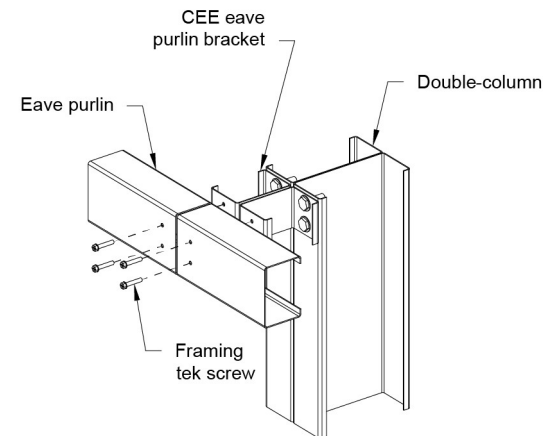
**Eave Purlin Bracket Double CEE**

<https://r.actbs.com/g/abs077>



**Eave Purlin Single CEE**

<https://r.actbs.com/g/abs076>



**Eave Purlin Double CEE**

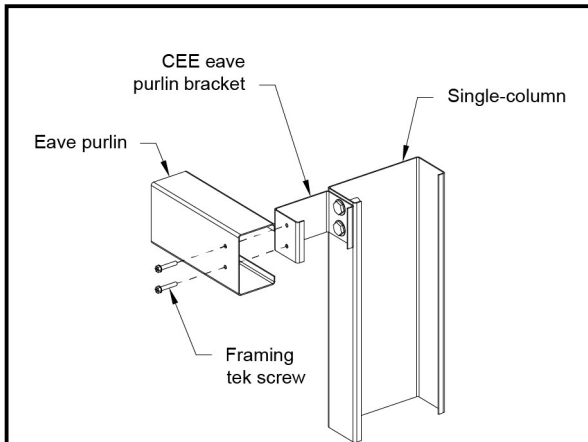
<https://r.actbs.com/g/abs074>



## Roof Details

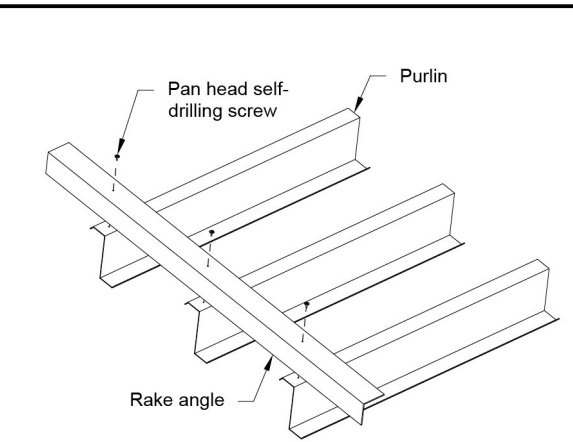
This illustration is for reference only, and is to be used to supplement the engineering drawings. If any discrepancies occur, the engineering plans will always take precedence.





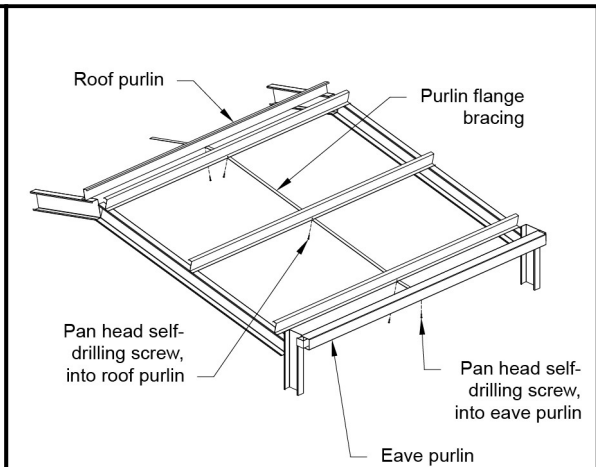
**Eave Purlin End CEE**

<https://r.actbs.com/g/abs075>



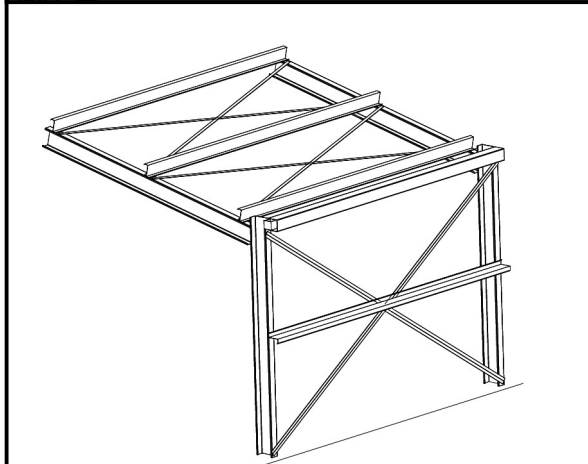
**Rake Angle**

<https://r.actbs.com/g/abs465>



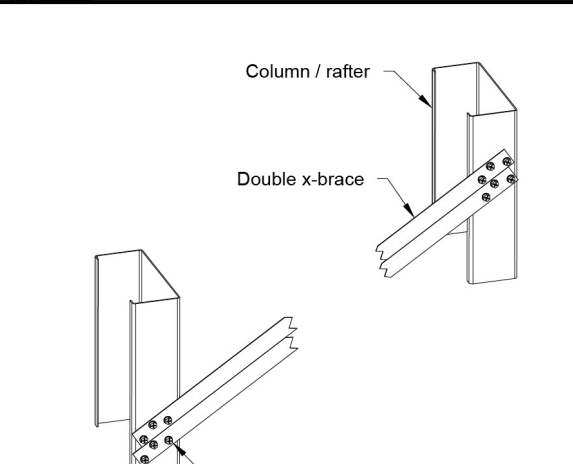
**Purlin Flange Bracing**

<https://r.actbs.com/g/abs441>



**X-Bracing**

<https://r.actbs.com/g/abs549>



**X-Bracing**

<https://r.actbs.com/g/abs541>



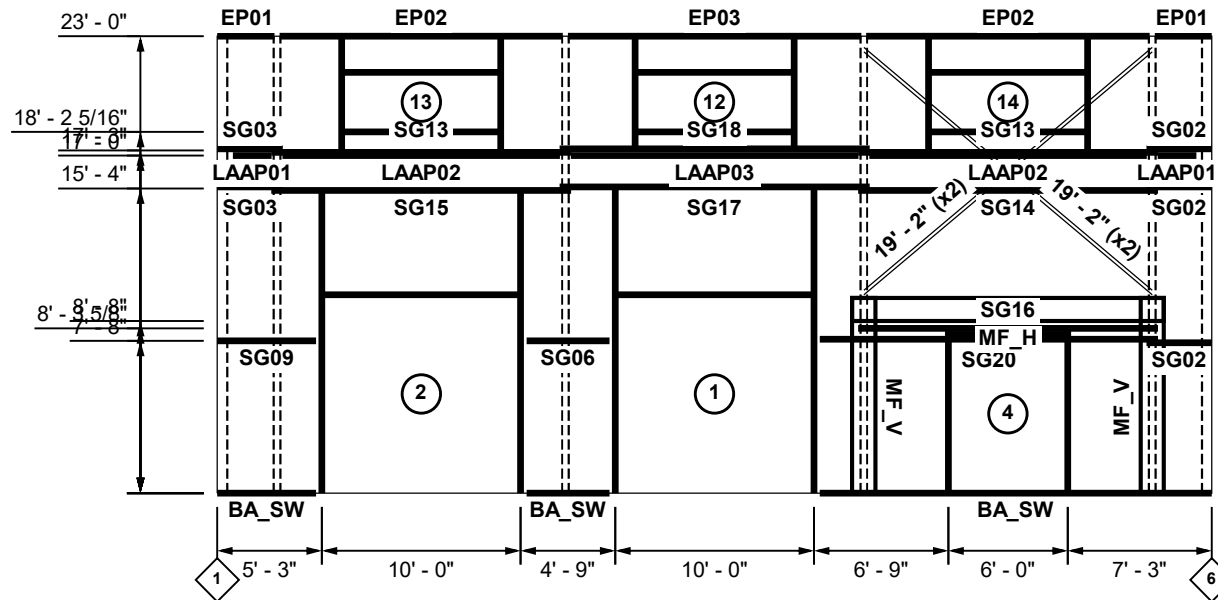
## Roof Details

This illustration is for reference only, and is to be used to supplement the engineering drawings. If any discrepancies occur, the engineering plans will always take precedence.





Opening Table				Member Table		
#	Jambs	Sup Jambs	Header/Sill	Mark	Product	Length
1	OJ13	--	OH04	BA_SW	2in x 4in Angle	Varies
2	OJ01	--	OH04	EP01	6X2.5 14 EAVE	3' - 0"
4	OJ09	--	OH02	EP02	6X2.5 14 EAVE	14' - 6"
12	OJ08	--	OH03	EP03	6X2.5 14 EAVE	15' - 0"
13	OJ08	--	OH03	LAAP01	6X2.5 14 EAVE	1' - 11 3/8"
14	OJ08	--	OH03	LAAP02	6X2.5 14 EAVE	13' - 11 3/8"
				LAAP03	6X2.5 14 EAVE	14' - 5 3/8"
				MF_H	14" x 12ga. CEE	15' - 8"
				MF_V	14" x 12ga. CEE	9' - 10"
				OH02	6" x 16ga. CEE	5' - 11"
				OH03	6" x 16ga. CEE	7' - 11"
				OH04	6" x 16ga. CEE	9' - 11"
				OJ01	6" x 14ga. CEE	15' - 4"
				OJ08	6in x 2.875in 14G Channel	5' - 3"
				OJ09	6in x 2.875in 14G Channel	8' - 3 5/8"
				OJ13	6" x 16ga. CEE	15' - 4"
				SG02	6" x 12ga. LGSI ZEE	3' - 3 1/2"
				SG03	6" x 12ga. LGSI ZEE	3' - 3 1/2"
				SG06	6" x 12ga. LGSI ZEE	4' - 2"
				SG09	6" x 12ga. LGSI ZEE	4' - 11 1/2"
				SG13	6" x 12ga. LGSI ZEE	15' - 1"
				SG14	6" x 12ga. LGSI ZEE	15' - 1"
				SG15	6" x 12ga. LGSI ZEE	15' - 1"
				SG16	6" x 12ga. LGSI ZEE	15' - 1"
				SG17	6" x 12ga. LGSI ZEE	15' - 7"
				SG18	6" x 12ga. LGSI ZEE	15' - 7"
				SG20	6" x 12ga. LGSI ZEE	17' - 0"



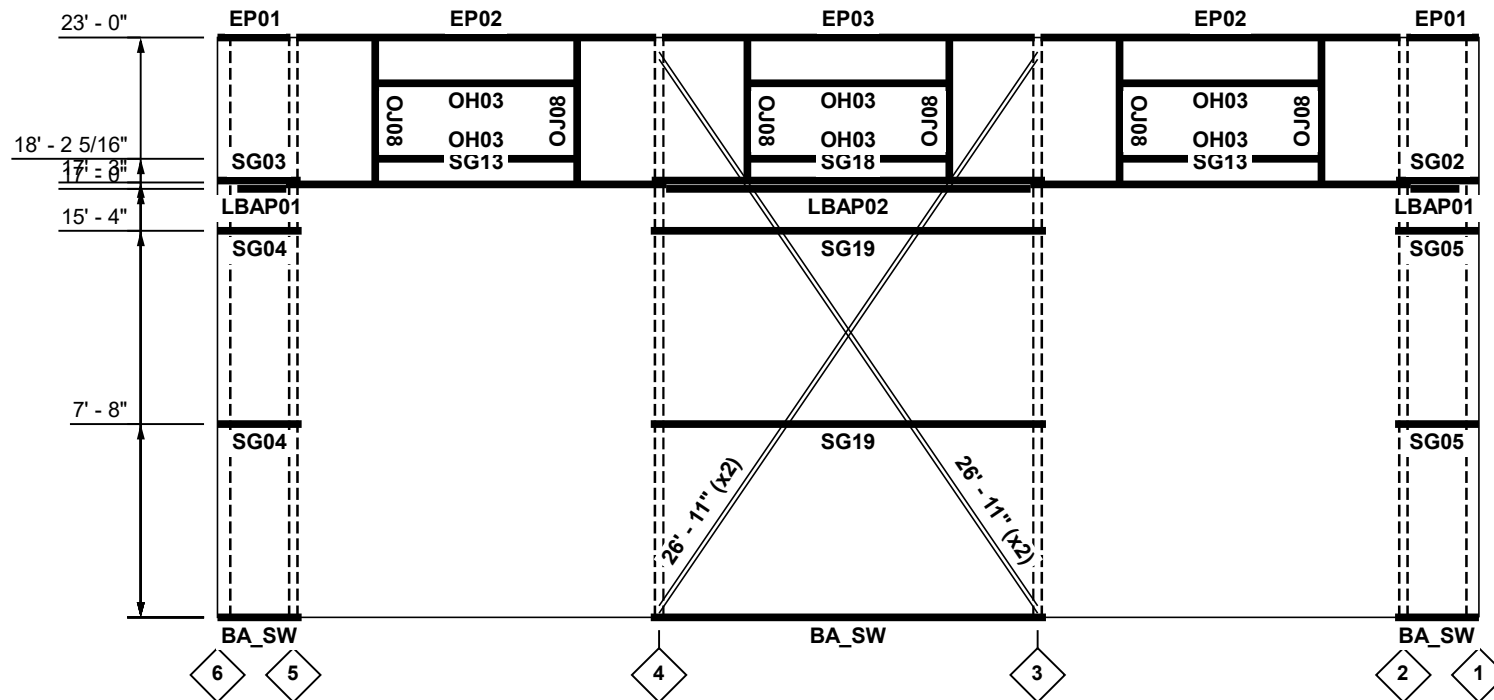
This illustration is for reference only, and is to be used to supplement the engineering drawings. If any discrepancies occur, the engineering plans will always take precedence.



## Sidewall A Girt Layout, Frame Line B



Member Table		
Mark	Product	Length
BA_SW	2in x 4in Angle	Varies
EP01	6X2.5 14 EAVE	3' - 0"
EP02	6X2.5 14 EAVE	14' - 6"
EP03	6X2.5 14 EAVE	15' - 0"
LBAP01	6X2.5 14 EAVE	1' - 11 3/8"
LBAP02	6X2.5 14 EAVE	14' - 5 3/8"
OH03	6" x 16ga. CEE	7' - 11"
OJ08	6in x 2.875in 14G Channel	5' - 3"
SG02	6" x 12ga. LGSi ZEE	3' - 3 1/2"
SG03	6" x 12ga. LGSi ZEE	3' - 3 1/2"
SG04	6" x 12ga. LGSi ZEE	3' - 4"
SG05	6" x 12ga. LGSi ZEE	3' - 4"
SG13	6" x 12ga. LGSi ZEE	15' - 1"
SG18	6" x 12ga. LGSi ZEE	15' - 7"
SG19	6" x 12ga. LGSi ZEE	15' - 8"



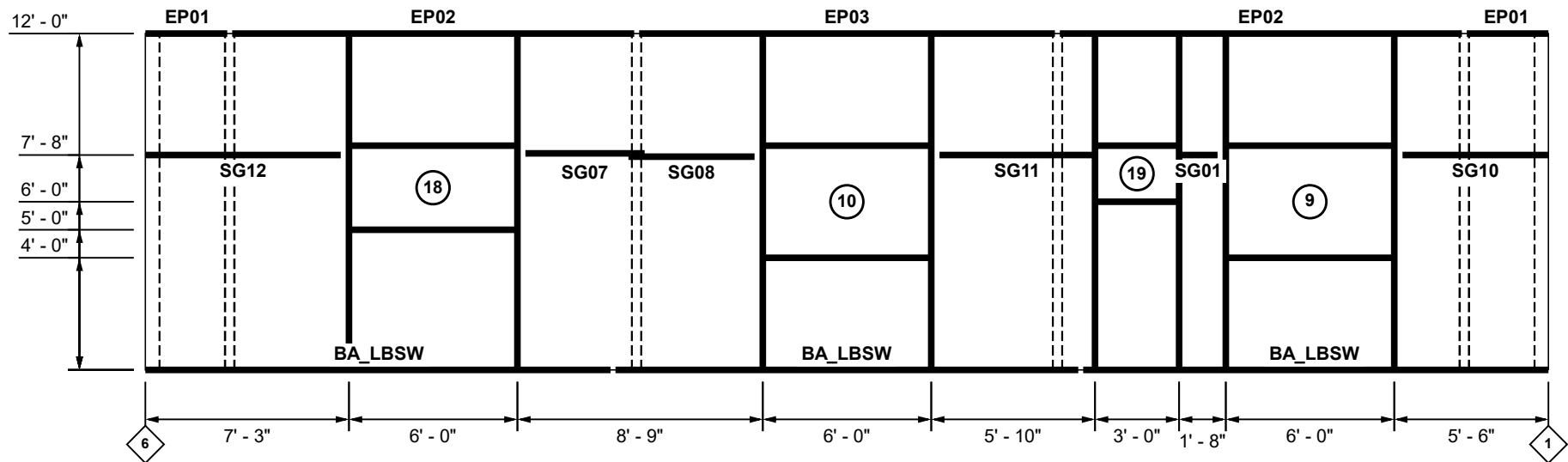
This illustration is for reference only, and is to be used to supplement the engineering drawings. If any discrepancies occur, the engineering plans will always take precedence.



## Sidewall B Girt Layout, Frame Line C



Opening Table				Member Table		
#	Jambs	Sup Jambs	Header/Sill	Mark	Product	Length
9	OJ11	--	OH02	BA_LBSW	2in x 4in Angle	16' - 8"
10	OJ11	--	OH02	EP01	6X2.5 14 EAVE	3' - 0"
18	OJ12	--	OH02	EP02	6X2.5 14 EAVE	14' - 6"
19	OJ10	--	OH01	EP03	6X2.5 14 EAVE	15' - 0"
				OH01	6" x 16ga. CEE	2' - 11"
				OH02	6" x 16ga. CEE	5' - 11"
				OJ10	6in x 2.875in 14G Channel	11' - 6"
				OJ11	6" x 16ga. CEE	11' - 6"
				OJ12	6" x 16ga. CEE	11' - 6"
				SG01	6" x 12ga. LGSi ZEE	1' - 4 1/2"
				SG07	6" x 12ga. LGSi ZEE	4' - 3"
				SG08	6" x 12ga. LGSi ZEE	4' - 6"
				SG10	6" x 12ga. LGSi ZEE	5' - 2 1/2"
				SG11	6" x 12ga. LGSi ZEE	5' - 6 1/2"
				SG12	6" x 12ga. LGSi ZEE	6' - 11 1/2"

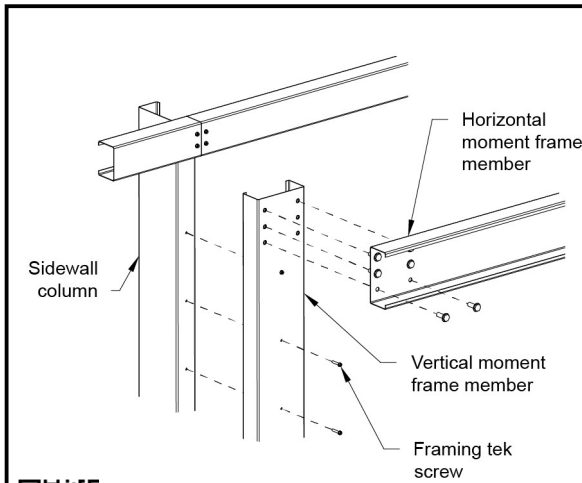


This illustration is for reference only, and is to be used to supplement the engineering drawings. If any discrepancies occur, the engineering plans will always take precedence.



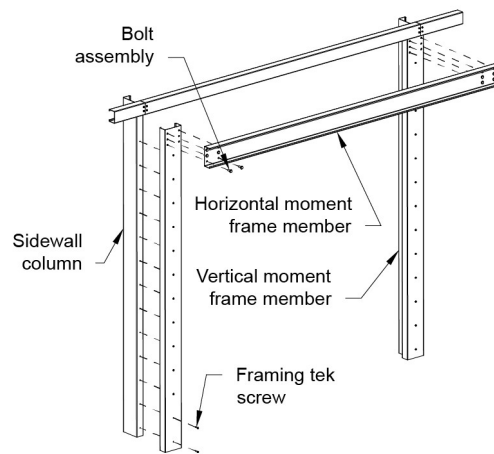
## Leanto B Sidewall Girt Layout, Frame Line D





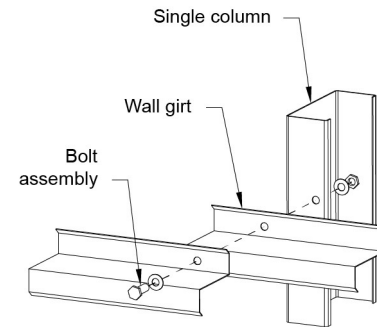
**Moment Frame Vertical**

<https://r.actbs.com/g/abs385>



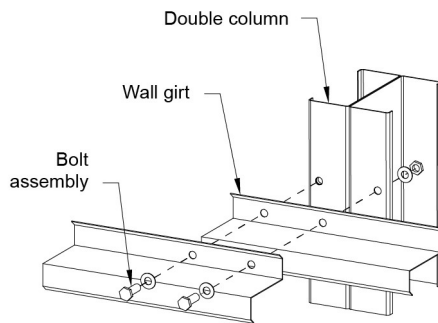
**Moment Frame Horizontal**

<https://r.actbs.com/g/abs397>



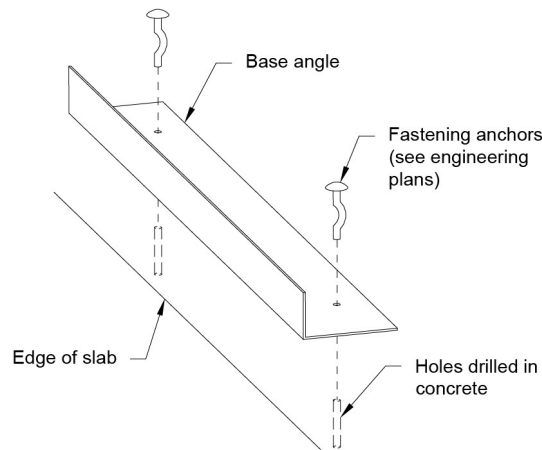
**Girt Column Single**

<https://r.actbs.com/g/abs221>



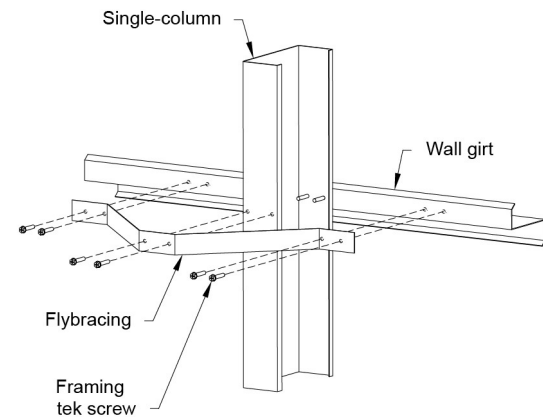
**Girt Column Double**

<https://r.actbs.com/g/abs213>



**Base Angle**

<https://r.actbs.com/g/abs025>



**Flybrace Single**

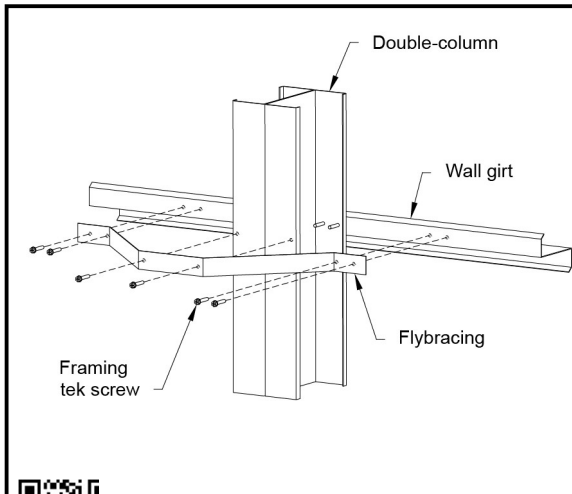
<https://r.actbs.com/g/abs205>



This illustration is for reference only, and is to be used to supplement the engineering drawings. If any discrepancies occur, the engineering plans will always take precedence.

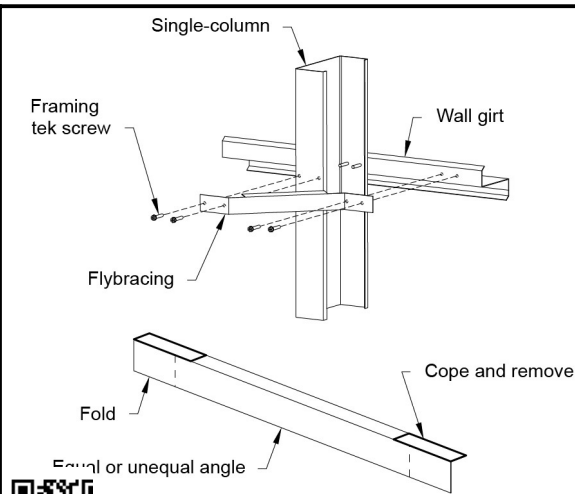
## Wall Details





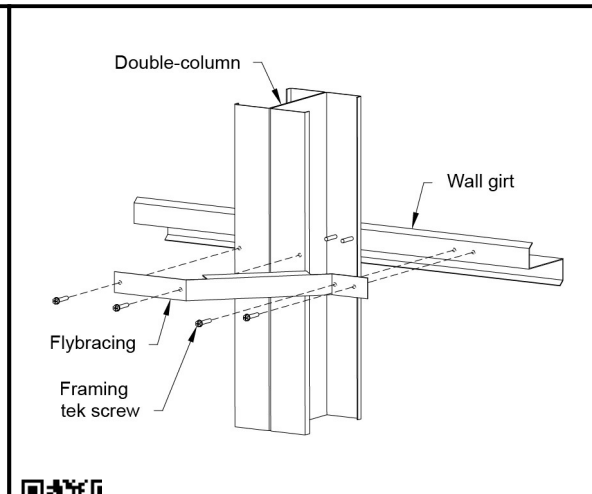
**Flybrace Double**

<https://r.actbs.com/g/abs197>



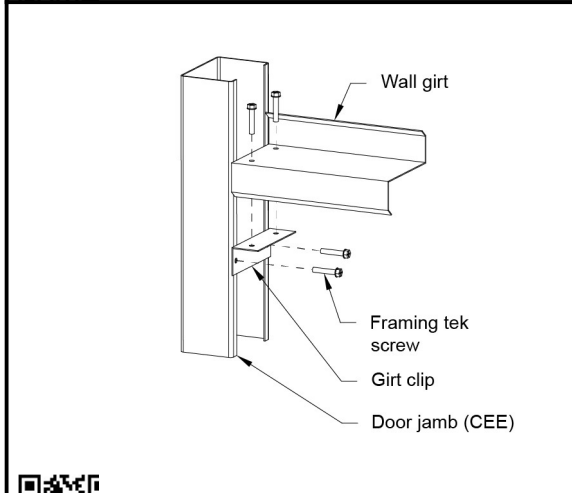
**Flybrace Single**

<https://r.actbs.com/g/abs201>



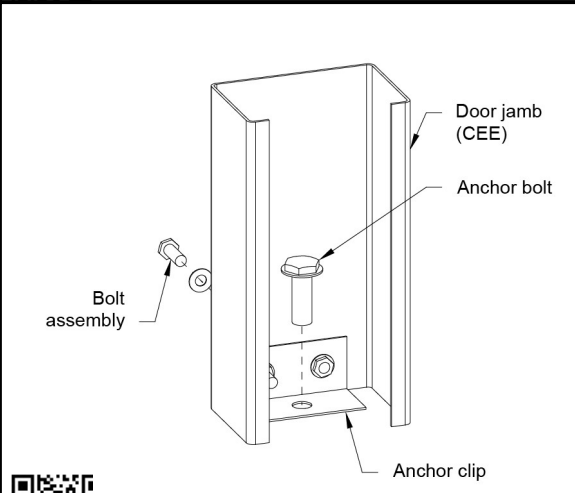
**Flybrace Double**

<https://r.actbs.com/g/abs193>



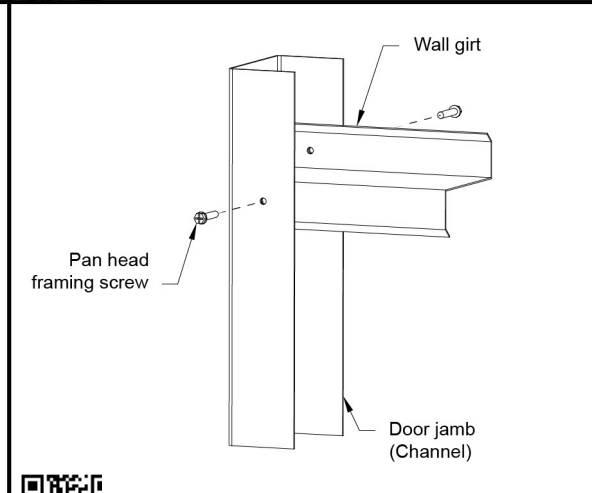
**CEE Jamb Detail**

<https://r.actbs.com/g/abs485>



**CEE Jamb Base Detail**

<https://r.actbs.com/g/abs489>



**Channel Jamb Detail**

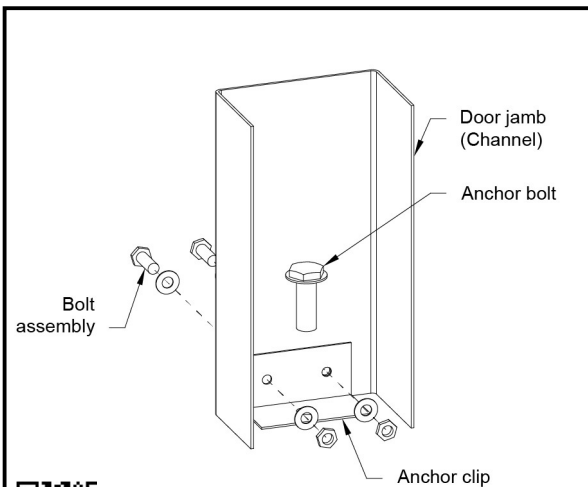
<https://r.actbs.com/g/abs501>



This illustration is for reference only, and is to be used to supplement the engineering drawings. If any discrepancies occur, the engineering plans will always take precedence.

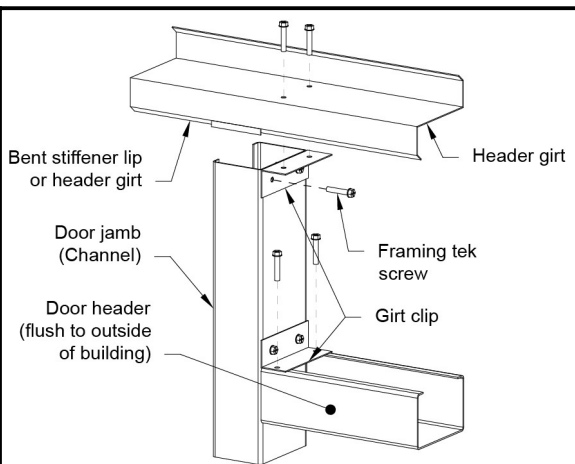
## Wall Details





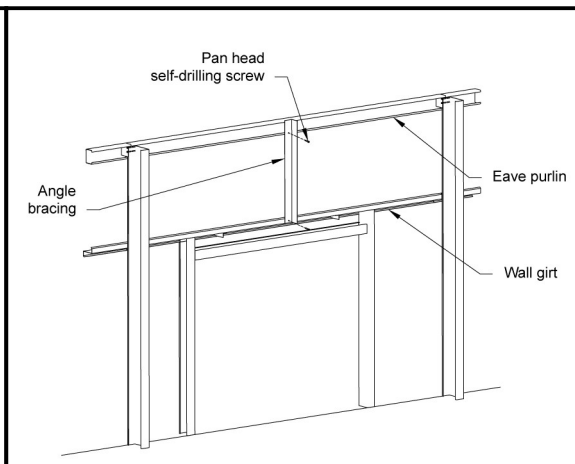
**Channel Jamb Base Detail**

<https://r.actbs.com/g/abs494>



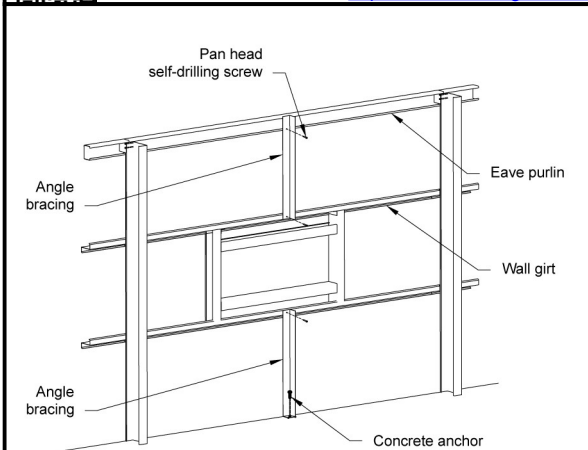
**Jamb to Header Girt**

<https://r.actbs.com/g/abs517>



**Door Opening with Bracing**

<https://r.actbs.com/g/abs435>



**Window Opening with Bracing**

<https://r.actbs.com/g/abs435>

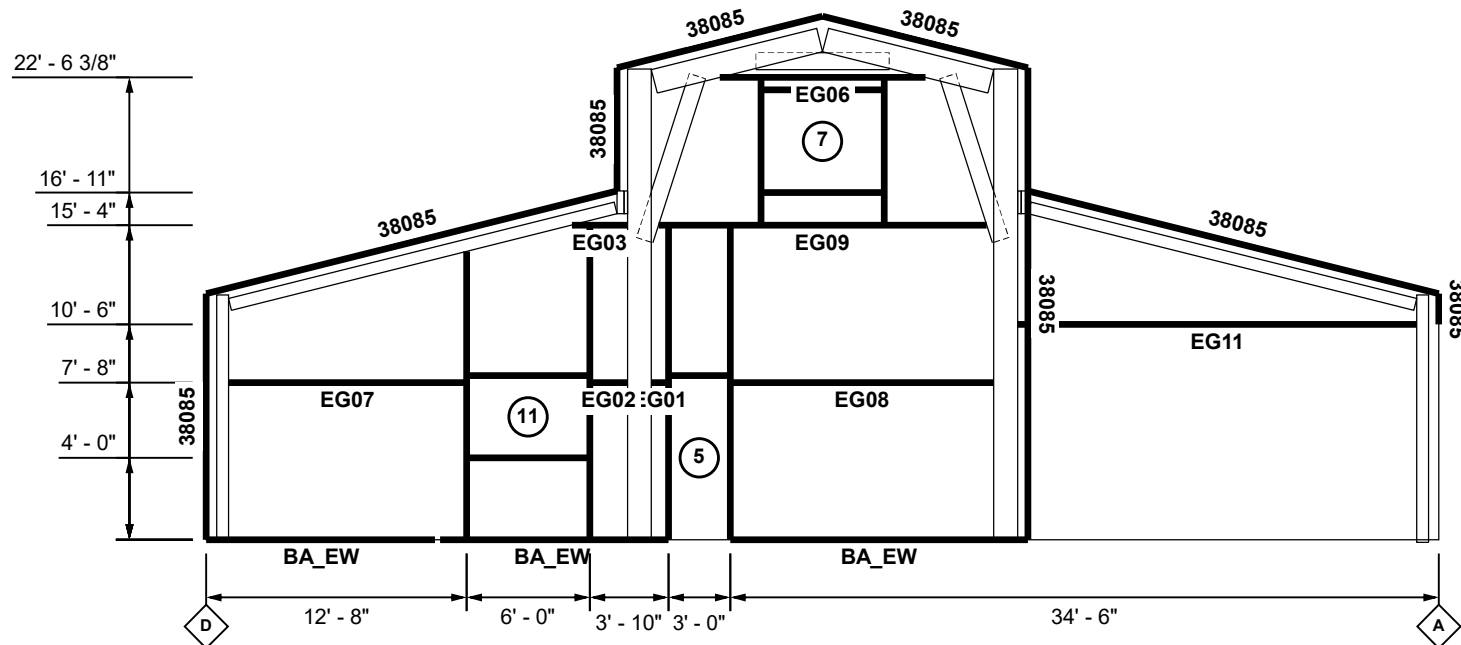


This illustration is for reference only, and is to be used to supplement the engineering drawings. If any discrepancies occur, the engineering plans will always take precedence.

## Wall Details

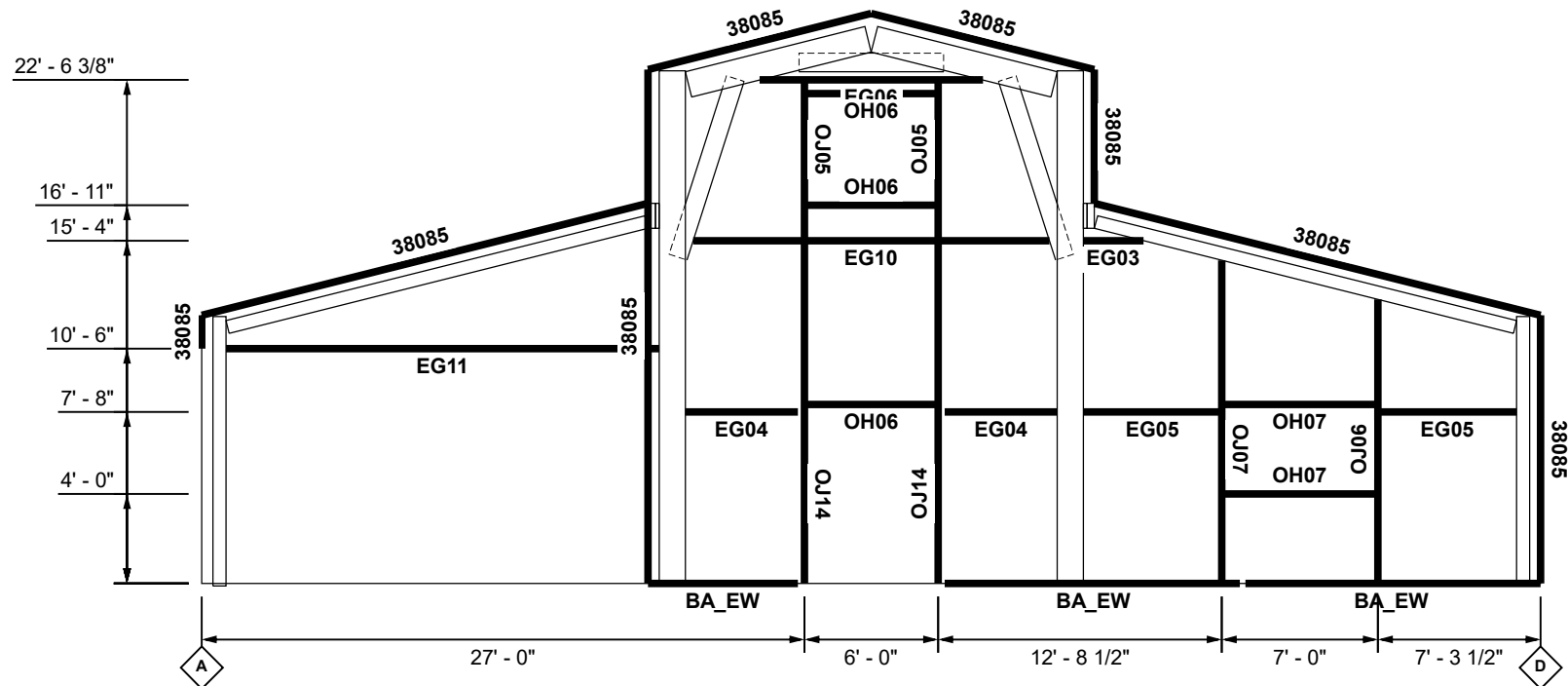


Opening Table					Member Table		
#	Jamb 1	Jamb 2	Sup Jamb	Header/Sill	Mark	Product	Length
5	OJ03	OJ03	--	OH05	38085	2in x 4in Angle	Varies
7	OJ05	OJ05	--	OH06	BA_EW	2in x 4in Angle	Varies
11	OJ04	OJ02	--	OH06	EG01	8" x 12ga. LGSi ZEE	10"
					EG02	8" x 12ga. LGSi ZEE	1' - 10"
					EG03	8" x 12ga. LGSi ZEE	2' - 8 3/8"
					EG06	8" x 12ga. LGSi ZEE	10' - 0 1/8"
					EG07	8" x 12ga. LGSi ZEE	11' - 7"
					EG08	8" x 12ga. LGSi ZEE	12' - 10"
					EG09	8" x 12ga. LGSi ZEE	15' - 11 11/16"
					EG11	8" x 12ga. LGSi ZEE	19' - 5"
					OH05	8" x 16ga. CEE	2' - 11"
					OH06	8" x 16ga. CEE	5' - 11"
					OJ02	8in x 2.875in 12G Channel	14' - 0 5/8"
					OJ03	8in x 2.875in 12G Channel	15' - 4"
					OJ04	8in x 2.875in 12G Channel	15' - 4"
					OJ05	8in x 2.875in 14G Channel	7' - 2 3/8"



This illustration is for reference only, and is to be used to supplement the engineering drawings. If any discrepancies occur, the engineering plans will always take precedence.

Member Table		
Mark	Product	Length
38085	2in x 4in Angle	Varies
BA_EW	2in x 4in Angle	Varies
EG03	8" x 12ga. LGSi ZEE	2' - 8 3/8"
EG04	8" x 12ga. LGSi ZEE	5' - 0 1/2"
EG05	8" x 12ga. LGSi ZEE	6' - 2 1/2"
EG06	8" x 12ga. LGSi ZEE	10' - 0 1/8"
EG10	8" x 12ga. LGSi ZEE	15' - 11 11/16"
EG11	8" x 12ga. LGSi ZEE	19' - 5"
OH06	8" x 16ga. CEE	5' - 11"
OH07	8" x 16ga. CEE	6' - 11"
OJ05	8in x 2.875in 14G Channel	7' - 2 3/8"
OJ06	8in x 2.875in 14G Channel	12' - 8 1/2"
OJ07	8in x 2.875in 14G Channel	14' - 5 1/2"
OJ14	8" x 16ga. CEE	15' - 4"



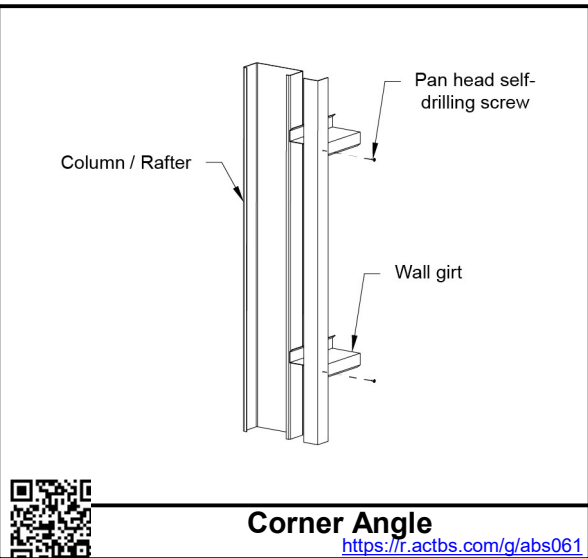
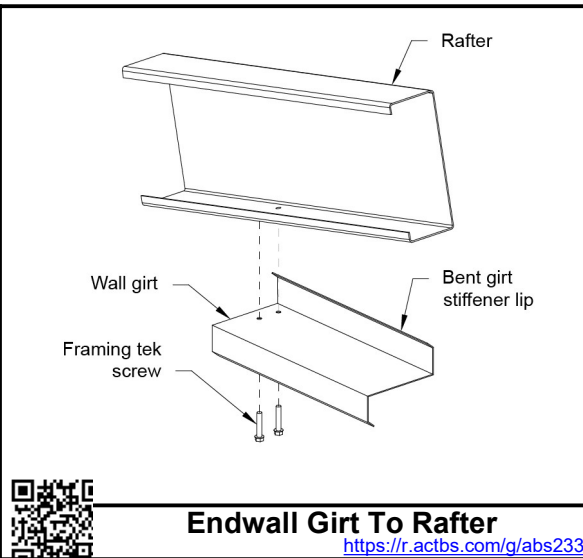
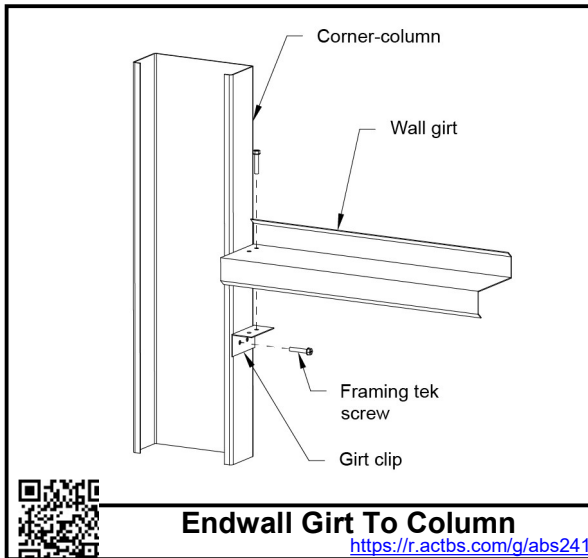
This illustration is for reference only, and is to be used to supplement the engineering drawings. If any discrepancies occur, the engineering plans will always take precedence.



## Endwall B Girt Layout, Frame Line 6







This illustration is for reference only, and is to be used to supplement the engineering drawings. If any discrepancies occur, the engineering plans will always take precedence.

## Wall Details





5' - 9 3/16"	5' - 9 3/16"	5' - 9 3/16"	1' - 8 3/16"	5' - 9 3/16"	5' - 9 3/16"	1' - 8 3/16"	1' - 8 3/16"	5' - 9 3/16"	5' - 9 3/16"	5' - 9 3/16"	1' - 8 3/16"	1' - 8 3/16"	5' - 9 3/16"	5' - 9 3/16"	5' - 9 3/16"
			1' - 1"				1' - 1"	1' - 1"				1' - 1"	1' - 1"		
16' - 11 11/16"	16' - 11 11/16"			16' - 11 11/16"	16' - 11 11/16"	16' - 11 11/16"	16' - 11 11/16"	16' - 11 11/16"	16' - 11 11/16"					16' - 11 11/16"	16' - 11 11/16"

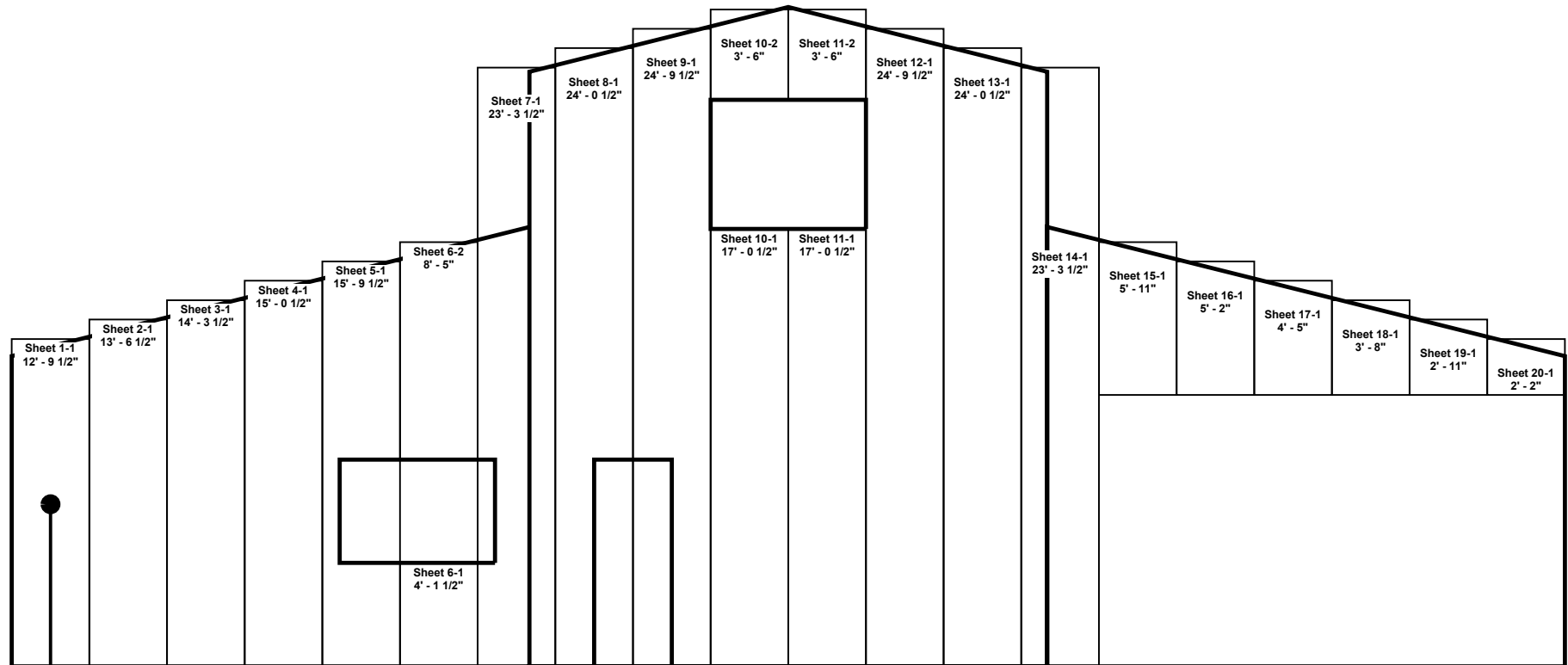
Sheeting starts with this sheet  
and moves across the wall



This illustration is for reference only, and is to be used to supplement the engineering drawings. If any discrepancies occur, the engineering plans will always take precedence.

## Sidewall B Sheeting Layout, Frame Line C





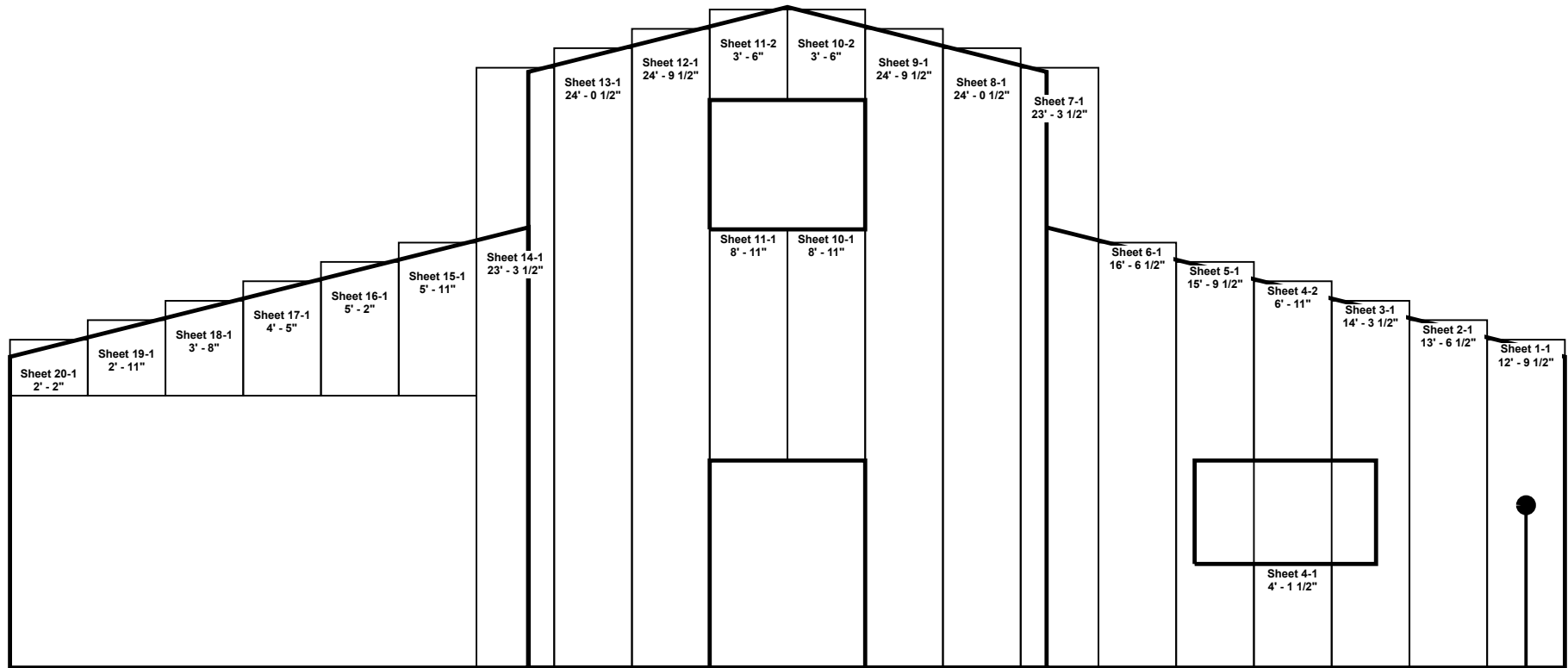
Sheeting starts with this sheet  
and moves across the wall

This illustration is for reference only, and is to be used to supplement the engineering drawings. If any discrepancies occur, the engineering plans will always take precedence.



## Endwall A Sheeting Layout, Frame Line 1





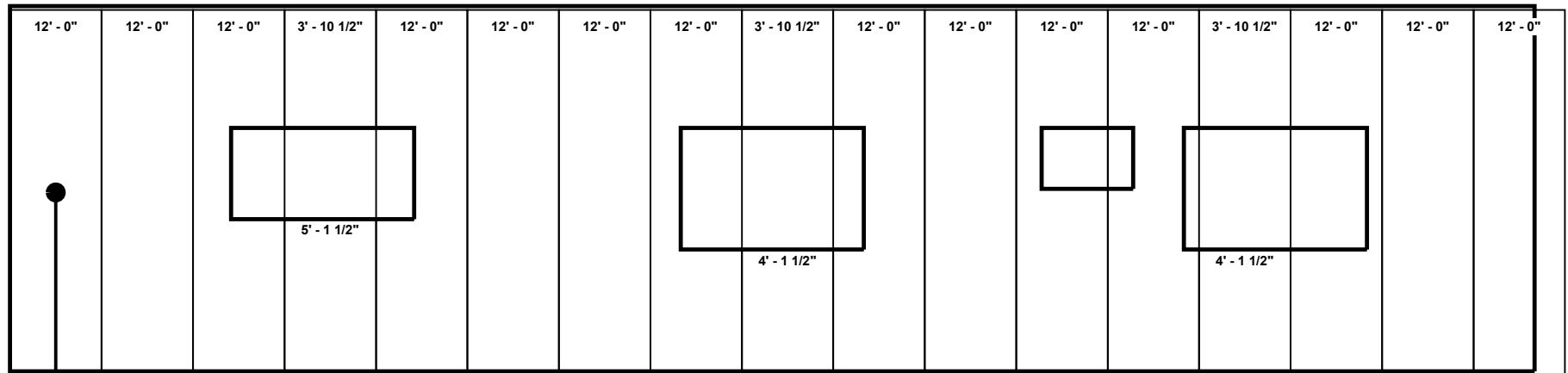
←  
Sheeting starts with this sheet  
and moves across the wall



This illustration is for reference only, and is to be used to supplement the engineering drawings. If any discrepancies occur, the engineering plans will always take precedence.

## Endwall B Sheeting Layout, Frame Line 6





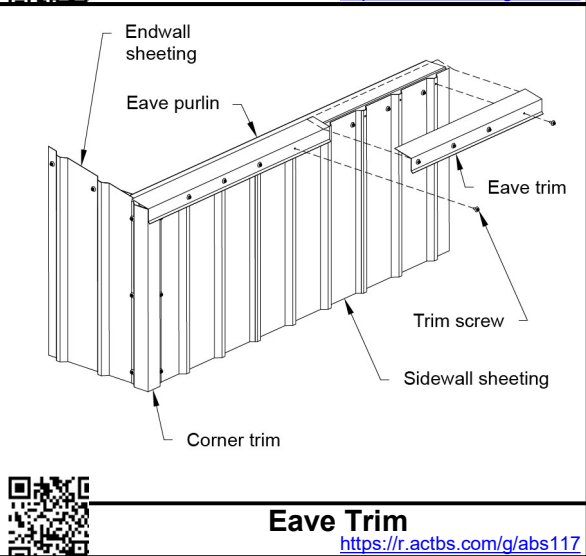
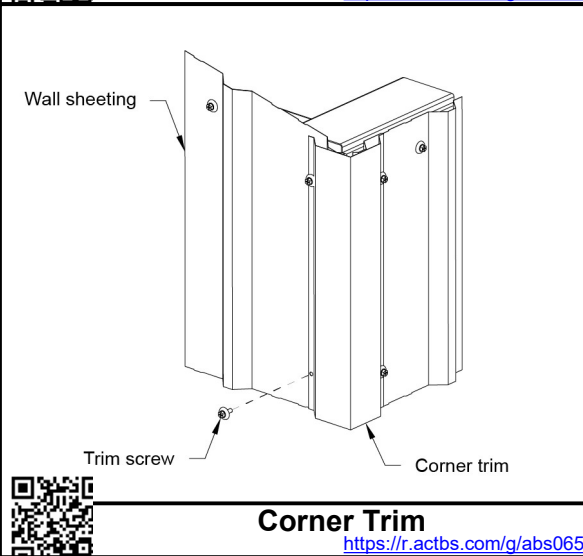
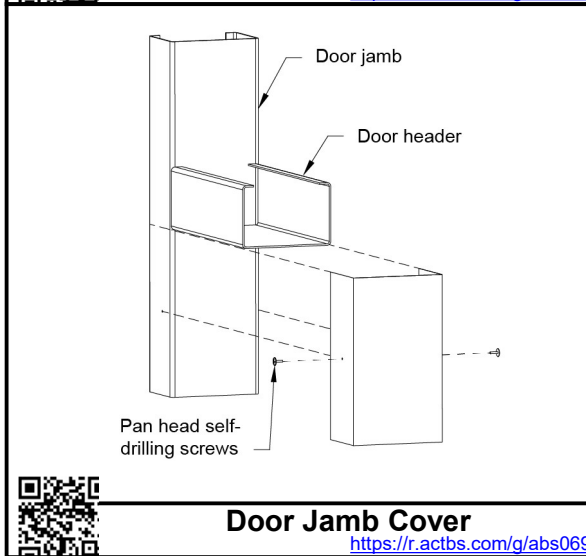
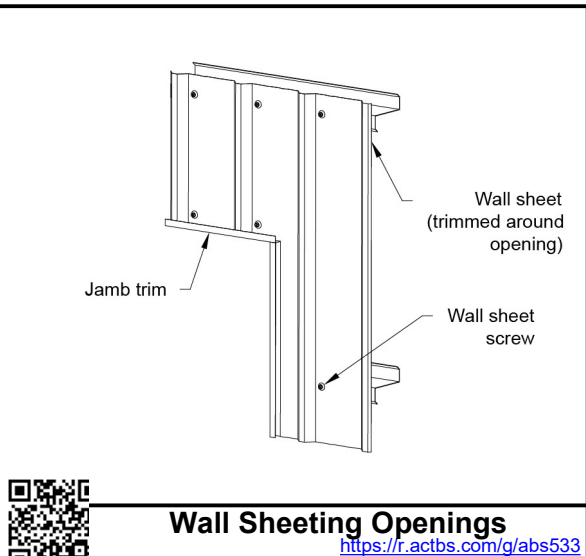
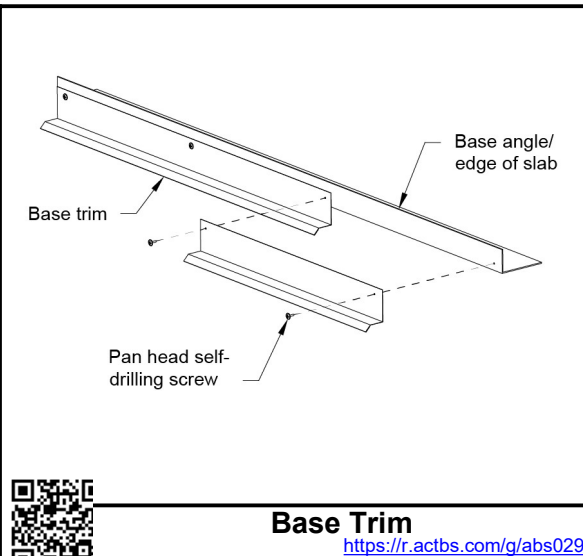
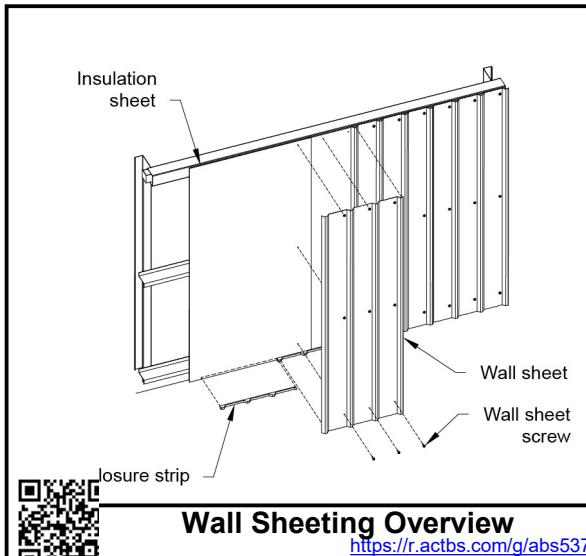
Sheeting starts with this sheet  
and moves across the wall



This illustration is for reference only, and is to be used to supplement the engineering drawings. If any discrepancies occur, the engineering plans will always take precedence.

## Leanto B Sidewall Sheeting Layout, Frame Line D

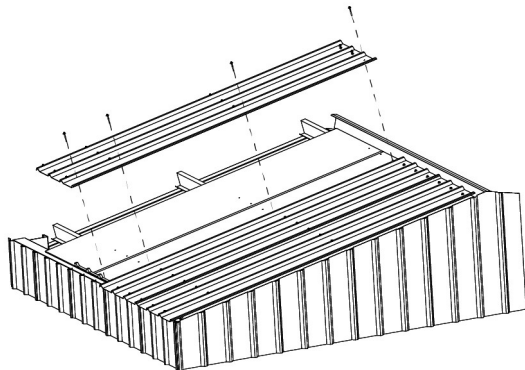




This illustration is for reference only, and is to be used to supplement the engineering drawings. If any discrepancies occur, the engineering plans will always take precedence.

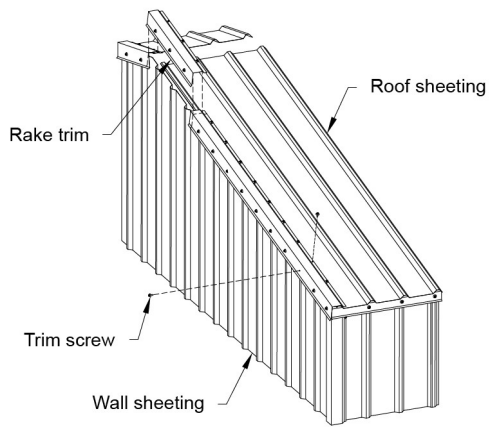
## Sheeting & Trim Details





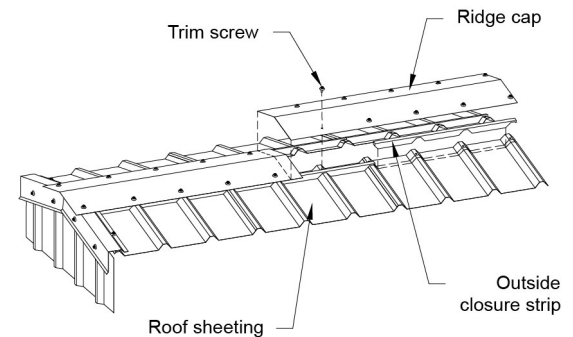
**Roof Sheeting**

<https://r.actbs.com/g/abs477>



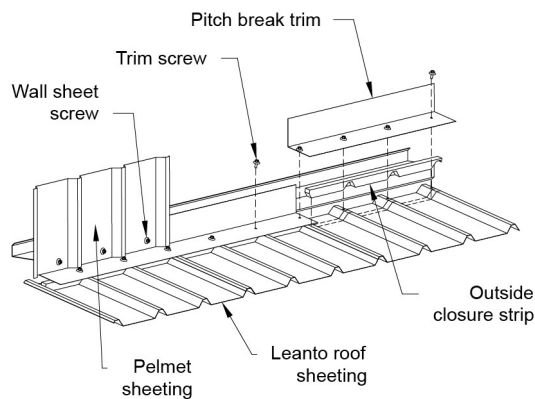
**Rake Trim**

<https://r.actbs.com/g/abs209>



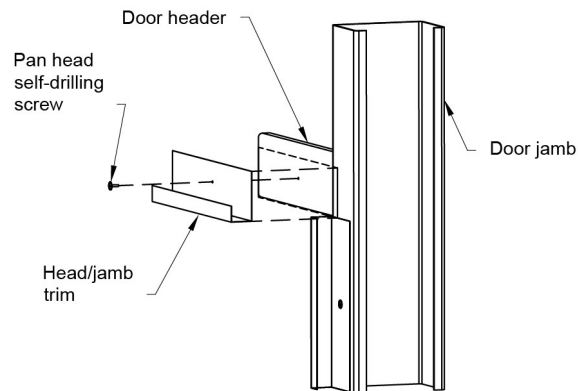
**Ridge Cap**

<https://r.actbs.com/g/abs469>



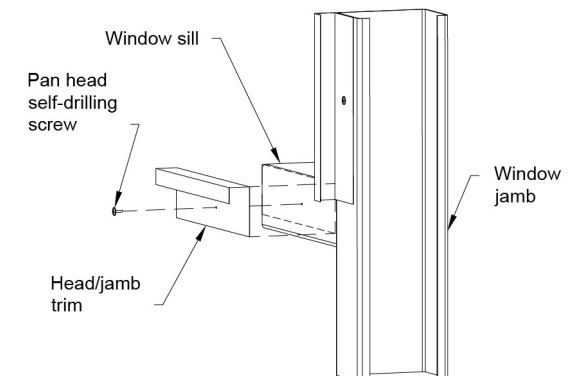
**Leanto Pitch Break Trim**

<https://r.actbs.com/g/abs437>



**Jamb Trim Top**

<https://r.actbs.com/g/abs277>



**Jamb Trim Bottom**

<https://r.actbs.com/g/abs273>



This illustration is for reference only, and is to be used to supplement the engineering drawings. If any discrepancies occur, the engineering plans will always take precedence.

## Sheeting & Trim Details

