

KEY NO.	PATTERN	DESCRIPTION
1	[Pattern]	DECOMPOSED GRANITE (STABILIZED) (TRAIL MEDIANS) (1/4" MINUS) (2" MIN. DEPTH) (PALOMINO GOLD)
2	[Pattern]	DECOMPOSED GRANITE (STABILIZED) (TRAIL MEDIANS) (1/4" MINUS) (2" MIN. DEPTH) (PALOMINO GOLD)
3	[Pattern]	DESERT PAVEMENT (3" SCREENED BLEND: 40% 3" ANGULAR RP RAP + 60% 1/2" MINUS) (3" MIN. DEPTH) (PALOMINO GOLD)
4	[Pattern]	DESERT PAVEMENT (3" SCREENED BLEND: 40% 3" ANGULAR RP RAP + 60% 1/2" MINUS) (3" MIN. DEPTH) (PALOMINO GOLD)
5	[Pattern]	DESERT PAVEMENT (3" SCREENED BLEND: 40% 3" ANGULAR RP RAP + 60% 1/2" MINUS) (3" MIN. DEPTH) (PALOMINO GOLD)

KEY NO.	PATTERN	DESCRIPTION
6	[Pattern]	EXPOSED AGGREGATE CONCRETE PAVEMENT (3/8" SCREENED) (4" MIN. DEPTH) (INTEGRAL COLOR SAN DIEGO BUFF)
7	[Pattern]	DECOMPOSED GRANITE RESTORATION ALLOWANCE (COS & PRIVATE PROPERTY) (1/4" MINUS) (2" MIN. DEPTH) (PALOMINO GOLD)
8	[Pattern]	PIT RUN BOLLIDER SHEET HD02 DETAIL 3
9	[Pattern]	PIT RUN BOLLIDER SHEET HD02 DETAIL 3
10	[Pattern]	PIT RUN BOLLIDER SHEET HD02 DETAIL 3
11	[Pattern]	PIT RUN BOLLIDER SHEET HD01 DETAIL 4
12	[Pattern]	ROCK CHECK DAM SHEET HD03 DETAIL 3

SYM	BOTANICAL NAME	COMMON NAME
TREES AND CACTI		
⊕	CELSTIS OCCIDENTALIS	HACKBERRY
⊕	CERCIDILUM SPECIES	SCOTTS DALE PALM
⊕	OLNEYA TESOTA	IRONWOOD TREE
⊕	PROSPERIS VELUTINA	ARIZONA MESQUITE
⊕	ZEPHYRUS OBtusILOEA	GRAYTHORN
⊕	CARNEGIEA GIGANTEA	SAGUARO
⊕	FEROCACTUS SPECIES	CHolla
⊕	CERCIDILUM SPECIES	SCOTTS DALE PALM
⊕	OLNEYA TESOTA	IRONWOOD TREE
⊕	CARNEGIEA GIGANTEA	SAGUARO
⊕	FOUQUIERIA SPENDENS	COTILLIO

SYM	BOTANICAL NAME	COMMON NAME
SHRUBS		
⊕	AMEROSIA DELTOIDEA	BURSAGE
⊕	ANISANTHUS THURBERI	DESERT HONEYBUCKLE
⊕	ARISTIDA PURPUREA	PURPLE THREEAWN
⊕	GALLANDRA ENOPHYLLA	PINK FAIRY DUSTER
⊕	ENCIELLA FARINOSA	BRITTLERUSH
⊕	HEBERGIA PARVIFLORA	BRANKELIGHTS
⊕	JUSTITIA CALIFORNICA	CHUPAROSA
⊕	LARREA TRIDENTATA	CREOSOTE
⊕	ERODIOPHYTES	SAND VERBENA
⊕	ABRONIA VILCOSA	DESERT MARICOLD
⊕	BAILEYA MULTIRADIATA	PARRY'S PENSTEMON
⊕	PENSTEMON PARRYI	ACCENTIS CACTUS
⊕	ALOE 'BLUE ELF'	'BLUE ELF' ALOE
⊕	CARNEGIEA GIGANTEA	SAGUARO
⊕	DASYLIRON WHEELERI	DESERT SPOON
⊕	ECHINOCEBUS ENGLEMANII	HEGEHOG CACTUS
⊕	FEROCACTUS WISLIZENI	FISHHOOK BARREL CACTUS
⊕	FOUQUIERIA SPENDENS	COOTILLO
⊕	MULLENBERGIA CAPILLARIS	REGAL MIST
⊕	OPUNTIA VESICULOR	STAGHORN CHOLLA
⊕	OPUNTIA LEPTOCALUS	DESERT CHRISTMAS CHOLLA
⊕	OPUNTIA ENGLEMANII	ENGLEMAN'S PRICKLEY PEAR
⊕	YUCCA BACCATA	BANANA YUCCA

GENERAL NOTES:
 1. MATERIALS INFORMATION.
 2. CONTRACTOR SHALL FIELD STAKE LOCATIONS OF SURFACE MATERIAL LAYOUT AREAS AND OBTAIN CITY ENGINEER APPROVAL.
 3. CONTRACTOR SHALL PROVIDE 3 GALLON SAMPLES OF ALL NEW AND MATCHING DECOMPOSED GRANITE (GRADATION AND COLOR) TO CHIEF ENGINEER FOR REVIEW AND APPROVAL.
 4. CONTRACTOR SHALL PROVIDE 3 GALLON SAMPLES OF ALL LANDSCAPE RESTORATION WORK.
 5. 8" X 8" SPOT ELEVATIONS WITHIN MEDIANS BUFFERS BE REFERENCED TO THE CONTAINMENT TOP OF CURB.
 6. CONTRACTOR TO PROTECT IN PLACE EXISTING ALL SIGNAGE, TRAFFIC SIGNAL EQUIPMENT, FIBER OPTIC CONDUIT AND EQUIPMENT.

CONTRACTOR NOTES:
 1. MATERIALS INFORMATION.
 2. CONTRACTOR SHALL FIELD STAKE LOCATIONS OF SURFACE MATERIAL LAYOUT AREAS AND OBTAIN CITY ENGINEER APPROVAL.
 3. CONTRACTOR SHALL PROVIDE 3 GALLON SAMPLES OF ALL NEW AND MATCHING DECOMPOSED GRANITE (GRADATION AND COLOR) TO CHIEF ENGINEER FOR REVIEW AND APPROVAL.
 4. CONTRACTOR SHALL PROVIDE 3 GALLON SAMPLES OF ALL LANDSCAPE RESTORATION WORK.
 5. 8" X 8" SPOT ELEVATIONS WITHIN MEDIANS BUFFERS BE REFERENCED TO THE CONTAINMENT TOP OF CURB.
 6. CONTRACTOR TO PROTECT IN PLACE EXISTING ALL SIGNAGE, TRAFFIC SIGNAL EQUIPMENT, FIBER OPTIC CONDUIT AND EQUIPMENT.



SYM	BOTANICAL NAME	COMMON NAME
SHRUBS		
⊕	AMEROSIA DELTOIDEA	BURSAGE
⊕	ANISANTHUS THURBERI	DESERT HONEYBUCKLE
⊕	ARISTIDA PURPUREA	PURPLE THREEAWN
⊕	GALLANDRA ENOPHYLLA	PINK FAIRY DUSTER
⊕	ENCIELLA FARINOSA	BRITTLERUSH
⊕	HEBERGIA PARVIFLORA	BRANKELIGHTS
⊕	JUSTITIA CALIFORNICA	CHUPAROSA
⊕	LARREA TRIDENTATA	CREOSOTE
⊕	ERODIOPHYTES	SAND VERBENA
⊕	ABRONIA VILCOSA	DESERT MARICOLD
⊕	BAILEYA MULTIRADIATA	PARRY'S PENSTEMON
⊕	PENSTEMON PARRYI	ACCENTIS CACTUS
⊕	ALOE 'BLUE ELF'	'BLUE ELF' ALOE
⊕	CARNEGIEA GIGANTEA	SAGUARO
⊕	DASYLIRON WHEELERI	DESERT SPOON
⊕	ECHINOCEBUS ENGLEMANII	HEGEHOG CACTUS
⊕	FEROCACTUS WISLIZENI	FISHHOOK BARREL CACTUS
⊕	FOUQUIERIA SPENDENS	COOTILLO
⊕	MULLENBERGIA CAPILLARIS	REGAL MIST
⊕	OPUNTIA VESICULOR	STAGHORN CHOLLA
⊕	OPUNTIA LEPTOCALUS	DESERT CHRISTMAS CHOLLA
⊕	OPUNTIA ENGLEMANII	ENGLEMAN'S PRICKLEY PEAR
⊕	YUCCA BACCATA	BANANA YUCCA

CONTRACTOR NOTES:
 CONTRACTING MATERIALS SHALL BE INVENTORIED WITHIN THE PROJECT LIMITS AND BE EITHER PROTECTED IN PLACE OR RELOCATED IN PROPOSED LANDSCAPE AREAS.
 1. REFER TO PLAN SHEET LP01 FOR PLANTING AND IRRIGATION MATERIALS LEGENDS WITH PRODUCT AND MFG INFORMATION.





12 engineering and environmental design services, Arizona State University
www.asu.edu

LANDSCAPE LEGEND

KEY NO.	PATTERN	DESCRIPTION
1	[Pattern]	DECOMPOSED GRANITE (3" SCREENED BLEND) (PALOMINO GOLD) (1/4" MINUS) (2' MIN. DEPTH)
2	[Pattern]	DECOMPOSED GRANITE (3" SCREENED BLEND) (PALOMINO GOLD) (1/4" MINUS) (2' MIN. DEPTH)
3	[Pattern]	DESERT PAVEMENT (3" SCREENED BLEND) (PALOMINO GOLD) (1/4" MINUS) (2' MIN. DEPTH)
4	[Pattern]	DESERT PAVEMENT (3" SCREENED BLEND) (PALOMINO GOLD) (1/4" MINUS) (2' MIN. DEPTH)
5	[Pattern]	DESERT PAVEMENT (3" SCREENED BLEND) (PALOMINO GOLD) (1/4" MINUS) (2' MIN. DEPTH)

LANDSCAPE LEGEND

KEY NO.	PATTERN	DESCRIPTION
6	[Pattern]	EXPOSED AGGREGATE CONCRETE PAVEMENT (3/8" SCREENED) (4" MIN. DEPTH) (INTEGRAL COLOR SAN DIEGO DUPT)
7	[Pattern]	DECOMPOSED GRANITE RESTORATION (3" SCREENED BLEND) (PALOMINO GOLD) (1/4" MINUS) (2' MIN. DEPTH)
8	[Pattern]	PIT RIM BOLLIDER (1" MIN. DEPTH)
9	[Pattern]	PIT RIM BOLLIDER (1" MIN. DEPTH)
10	[Pattern]	6" CONC. HEADER (RAISED MEDIAN)
11	[Pattern]	6" CONC. HEADER (RAISED MEDIAN)
12	[Pattern]	ROCK CHECK DAM

GENERAL NOTES

- SEE H01 FOR HARDSCAPE SCHEDULE WITH INERT MATERIALS INFORMATION.
- GENERAL LAYOUT, FINISHES AND CERTAIN CITY ENGINEER APPROVAL PRIOR TO CONSTRUCTION OPERATIONS.
- CONTRACTOR SHALL PROVIDE 3 GALLON SAMPLES OF ALL COLORS TO CITY ENGINEER FOR REVIEW AND APPROVAL PRIOR TO COMMENCING ANY NEW LANDSCAPE OR LANDSCAPE RESTORATION WORK.
- CONTRACTOR SHALL MAINTAIN ALL EXISTING UTILITIES, MEDIUM AND LANDSCAPE BUFFER GRADE ELEVATIONS.
- CONTRACTOR SHALL MAINTAIN ALL EXISTING UTILITIES, MEDIUM AND LANDSCAPE BUFFER GRADE ELEVATIONS.
- CONTRACTOR TO PROTECT IN PLACE EXISTING ALL SIGNAGE, TRAFFIC SIGNAL EQUIPMENT, FIBER OPTIC CONDUIT AND EQUIPMENT.

GENERAL NOTES

- SEE H01 FOR HARDSCAPE SCHEDULE WITH INERT MATERIALS INFORMATION.
- GENERAL LAYOUT, FINISHES AND CERTAIN CITY ENGINEER APPROVAL PRIOR TO CONSTRUCTION OPERATIONS.
- CONTRACTOR SHALL PROVIDE 3 GALLON SAMPLES OF ALL COLORS TO CITY ENGINEER FOR REVIEW AND APPROVAL PRIOR TO COMMENCING ANY NEW LANDSCAPE OR LANDSCAPE RESTORATION WORK.
- CONTRACTOR SHALL MAINTAIN ALL EXISTING UTILITIES, MEDIUM AND LANDSCAPE BUFFER GRADE ELEVATIONS.
- CONTRACTOR SHALL MAINTAIN ALL EXISTING UTILITIES, MEDIUM AND LANDSCAPE BUFFER GRADE ELEVATIONS.
- CONTRACTOR TO PROTECT IN PLACE EXISTING ALL SIGNAGE, TRAFFIC SIGNAL EQUIPMENT, FIBER OPTIC CONDUIT AND EQUIPMENT.

NEW PLANT LEGEND

SYM	BOTANICAL NAME	COMMON NAME
(Symbol)	CHLOROPHYTES	DESERT WILLOW
(Symbol)	OLIVEA TESOTA	IRONWOOD
(Symbol)	PARSONIA MICROPHYLLUM	FOOTHILLS PALO VERDE
(Symbol)	AMBROSIA DELTOIDEA	BURSAGE
(Symbol)	ANISACANTHUS THURBERI	DESERT HONEYBUCKLE
(Symbol)	ARISTIDA PURPUREA	PURPLE THREEAWN
(Symbol)	CALLILANDIA EROPHYLLA	PINK FAIRY DUSTER
(Symbol)	ENCLELIA FARINOSA	BRITTLERUSH
(Symbol)	HESPERALOE PARVIFLORA	BEAKLIGHTS
(Symbol)	JUSTICIA CALIFORNICA	CHUPAROSA
(Symbol)	LARREA TRIDENTATA	CREOSOTE
(Symbol)	GROUNDCOVERS:	
(Symbol)	ABRONIA YUCCA	SAND VERBENA
(Symbol)	BAILEYA MULTIRADATA	DESERT MARIGOLD
(Symbol)	PERSTEMON PARRYI	PARRY'S PENSTEMON
(Symbol)	ACCENTIS CACTUS:	
(Symbol)	ALOË 'BLUE ELF'	'BLUE ELF' ALOË
(Symbol)	CARNEGIEA GIGANTEA	SAGUARO
(Symbol)	DASYLIRON WHEELERI	DESERT SPOON
(Symbol)	ECHINOCEPHALUS	HEDGEHOG CACTUS
(Symbol)	ENGELMANNII	FISHHOOK BARREL CACTUS
(Symbol)	FEROCACTUS WISLIZENI	COOTILLO
(Symbol)	FOUQUIERA SPLENDENS	REGALINIST
(Symbol)	MULLENBERGIA CAPILLARIS	STAGHORN CHOLLA
(Symbol)	OPUNTIA VERSICOLOR	DESERT CHRISTMAS CHOLLA
(Symbol)	OPUNTIA LEPTOCALUS	CHRISTMAS CHOLLA
(Symbol)	OPUNTIA ENGELMANNII	ENGELMANN'S PRICKLY PEAR
(Symbol)	YUCCA BACCATA	BANANA YUCCA

LANDSCAPE LEGEND

SYM	BOTANICAL NAME	COMMON NAME
(Symbol)	CELIS OCCIDENTALIS	HACKBERRY
(Symbol)	FOUQUIERA SPLENDENS	IRONWOOD
(Symbol)	CECIDIUM SPECIES	IRONWOOD TREE
(Symbol)	OLIVEA TESOTA	ARIZONA MESQUITE
(Symbol)	PHOSOPHIS VULGINA	GRANT-TORN
(Symbol)	ZEPHYRUS OBTUSIFLORA	GRANT-TORN

NEW PLANT LEGEND

SYM	BOTANICAL NAME	COMMON NAME
(Symbol)	CARNEGIEA GIGANTEA	SAGUARO
(Symbol)	FOUQUIERA SPLENDENS	IRONWOOD
(Symbol)	CECIDIUM SPECIES	IRONWOOD TREE
(Symbol)	OLIVEA TESOTA	ARIZONA MESQUITE
(Symbol)	PHOSOPHIS VULGINA	GRANT-TORN
(Symbol)	ZEPHYRUS OBTUSIFLORA	GRANT-TORN

NEW PLANT LEGEND

SYM	BOTANICAL NAME	COMMON NAME
(Symbol)	CARNEGIEA GIGANTEA	SAGUARO
(Symbol)	FOUQUIERA SPLENDENS	IRONWOOD
(Symbol)	CECIDIUM SPECIES	IRONWOOD TREE
(Symbol)	OLIVEA TESOTA	ARIZONA MESQUITE
(Symbol)	PHOSOPHIS VULGINA	GRANT-TORN
(Symbol)	ZEPHYRUS OBTUSIFLORA	GRANT-TORN

NEW PLANT LEGEND

SYM	BOTANICAL NAME	COMMON NAME
(Symbol)	CARNEGIEA GIGANTEA	SAGUARO
(Symbol)	FOUQUIERA SPLENDENS	IRONWOOD
(Symbol)	CECIDIUM SPECIES	IRONWOOD TREE
(Symbol)	OLIVEA TESOTA	ARIZONA MESQUITE
(Symbol)	PHOSOPHIS VULGINA	GRANT-TORN
(Symbol)	ZEPHYRUS OBTUSIFLORA	GRANT-TORN

NEW PLANT LEGEND

SYM	BOTANICAL NAME	COMMON NAME
(Symbol)	CARNEGIEA GIGANTEA	SAGUARO
(Symbol)	FOUQUIERA SPLENDENS	IRONWOOD
(Symbol)	CECIDIUM SPECIES	IRONWOOD TREE
(Symbol)	OLIVEA TESOTA	ARIZONA MESQUITE
(Symbol)	PHOSOPHIS VULGINA	GRANT-TORN
(Symbol)	ZEPHYRUS OBTUSIFLORA	GRANT-TORN

NEW PLANT LEGEND

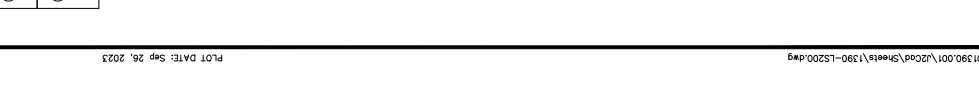
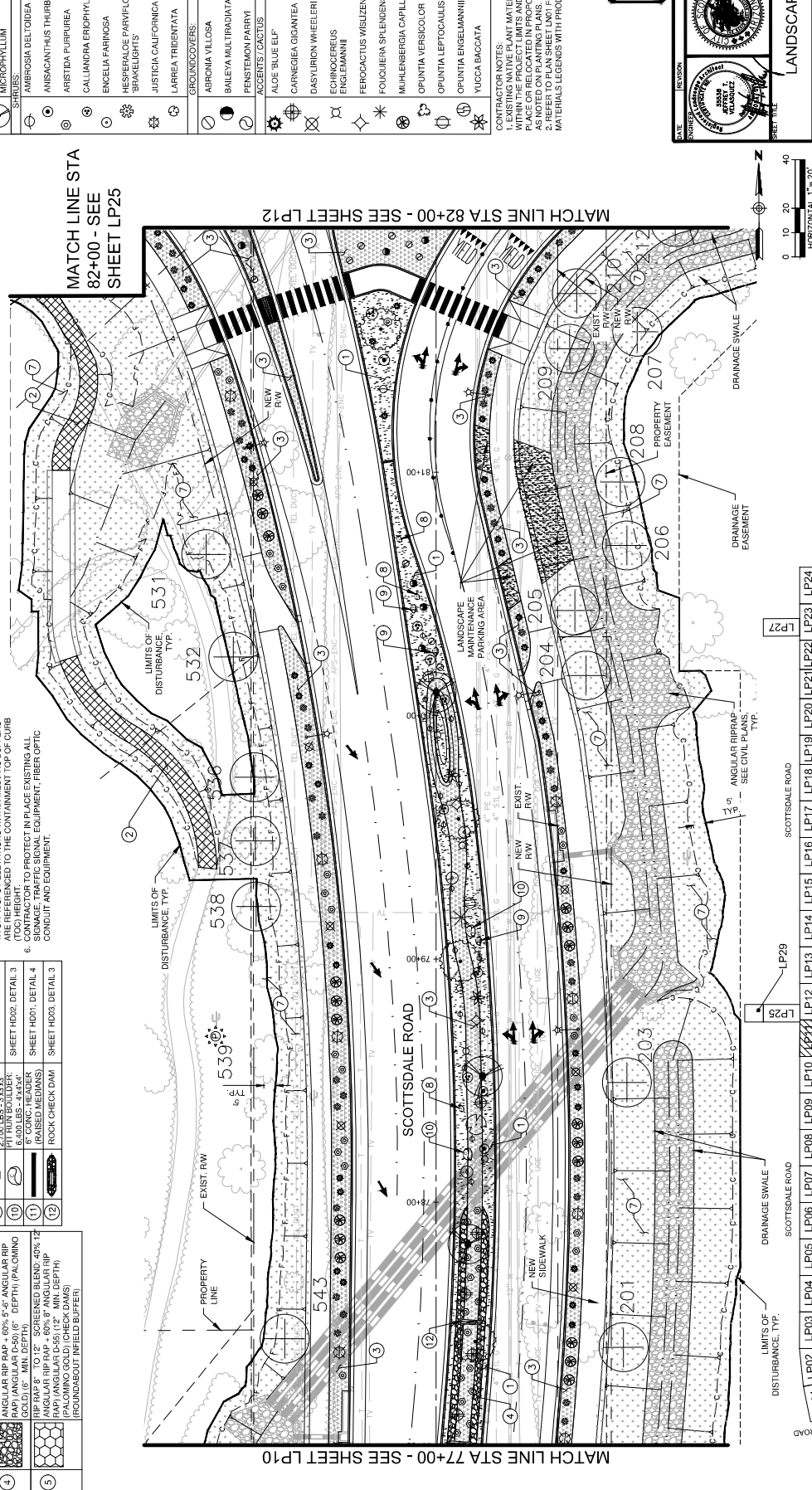
SYM	BOTANICAL NAME	COMMON NAME
(Symbol)	CARNEGIEA GIGANTEA	SAGUARO
(Symbol)	FOUQUIERA SPLENDENS	IRONWOOD
(Symbol)	CECIDIUM SPECIES	IRONWOOD TREE
(Symbol)	OLIVEA TESOTA	ARIZONA MESQUITE
(Symbol)	PHOSOPHIS VULGINA	GRANT-TORN
(Symbol)	ZEPHYRUS OBTUSIFLORA	GRANT-TORN

NEW PLANT LEGEND

SYM	BOTANICAL NAME	COMMON NAME
(Symbol)	CARNEGIEA GIGANTEA	SAGUARO
(Symbol)	FOUQUIERA SPLENDENS	IRONWOOD
(Symbol)	CECIDIUM SPECIES	IRONWOOD TREE
(Symbol)	OLIVEA TESOTA	ARIZONA MESQUITE
(Symbol)	PHOSOPHIS VULGINA	GRANT-TORN
(Symbol)	ZEPHYRUS OBTUSIFLORA	GRANT-TORN

NEW PLANT LEGEND

SYM	BOTANICAL NAME	COMMON NAME
(Symbol)	CARNEGIEA GIGANTEA	SAGUARO
(Symbol)	FOUQUIERA SPLENDENS	IRONWOOD
(Symbol)	CECIDIUM SPECIES	IRONWOOD TREE
(Symbol)	OLIVEA TESOTA	ARIZONA MESQUITE
(Symbol)	PHOSOPHIS VULGINA	GRANT-TORN
(Symbol)	ZEPHYRUS OBTUSIFLORA	GRANT-TORN



ARIZONA PUBLIC WORKS CAPITAL PROJECT MANAGEMENT 7447 E. MIDWAY SCHOOL RD. SCOTTSDALE, ARIZONA 85261

LANDSCAPE PLAN

PROJECT FILE: SCOTTSDALE ROAD
JOMAX ROAD TO DIXILETA DRIVE

DATE: 09/2023
SCALE: 1"=20'
REV: 1/2023
DRAWN BY: AS-BELT
CHECKED BY: SSS/SS

THIS SHEET SCALED FOR 24"x36" BORDER

SCOTTSDALE ROAD
JOMAX ROAD
DIXILETA DRIVE
PROPERTY EASEMENT
DRAINAGE SWALE
DRAINAGE EASEMENT

SCOTTSDALE ROAD
JOMAX ROAD
DIXILETA DRIVE
PROPERTY EASEMENT
DRAINAGE SWALE
DRAINAGE EASEMENT

SCOTTSDALE ROAD
JOMAX ROAD
DIXILETA DRIVE
PROPERTY EASEMENT
DRAINAGE SWALE
DRAINAGE EASEMENT

SCOTTSDALE ROAD
JOMAX ROAD
DIXILETA DRIVE
PROPERTY EASEMENT
DRAINAGE SWALE
DRAINAGE EASEMENT



Engineering and environmental design services, Arizona State University
 2522-22 PLAN REVIEW NO.

LANDSCAPE LEGEND
 SALVAGE PLANT LEGEND

SYM	BOTANICAL NAME	COMMON NAME
	TREES AND CACTI:	
	CELTRIS OCCIDENTALIS	HACKBERRY
	CERCIDIMUM SPECIES	SCOTTIS PALM VERDE
	OLIVEA TESOTA	IRONWOOD TREE
	PROSOPIS VELUTINA	ARIZONA MESQUITE
	ZAPHRAUS OBUSIFLORA	GRAY THORN
	CARNEGIEA GRANIFLORA	SAGUARO BARREL
	FEROCACTUS SPECIES	SAGUARO BARREL
	OLIVEA TESOTA	IRONWOOD TREE
	CARNEGIEA GRANIFLORA	SAGUARO BARREL
	FEROCACTUS SPECIES	SAGUARO BARREL

SYM	BOTANICAL NAME	COMMON NAME
	AMBROSIA DELTOIDEA	BURSAGE
	ANISANTHUS THURBERI	DESERT HONEYBUCKLE
	ARISTIDA PURPUREA	PURPLE THREEWAIN
	CALLANDRA EROPHYLLA	PINK FAIRY DUSTER
	ENCELIA FARINOSA	BRITTLERUSH
	HESPERALOE PARVIFLORA	BEAKLIGHTS
	TRAVELIGHTS	HESPERALOE
	JUSTICIA CALIFORNICA	CHUPAROSA
	LARREA TRIDENTATA	CREOSOTE
	GROUNDCOVERS:	
	ABRONIA VILGOSA	SAND VERBENA
	BAILEYA MULTIRADIATA	DESERT MARIGOLD
	PENSTEMON PARRYI	PARRY'S PENSTEMON
	ACCENTS/CACTUS:	
	ALOË 'BLUE ELF'	'BLUE ELF' ALOË
	CARNEGIEA GIGANTEA	SAGUARO
	DASYLIRION WHEELERI	DESERT SPOON
	ECHINOCEBUS ENGLEMANNI	HEDGEHOG CACTUS
	FEROCACTUS WISLIZENI	FISHHOOK BARREL CACTUS
	FOUQUIERA SPLENDENS	COOTILLO
	MUHLENBERGIA CAPILLARIS	REGALIST
	OPUNTIA VERSICOLOR	STAGHORN CHolla
	OPUNTIA LEPTOCALUS	DESERT CHRISTMAS CHolla
	OPUNTIA ENGELMANNII	ENGELMANN'S PRICKLY PEAR
	YUCCA BACCATA	BANANA YUCCA

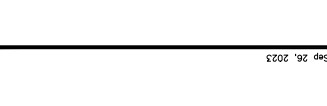
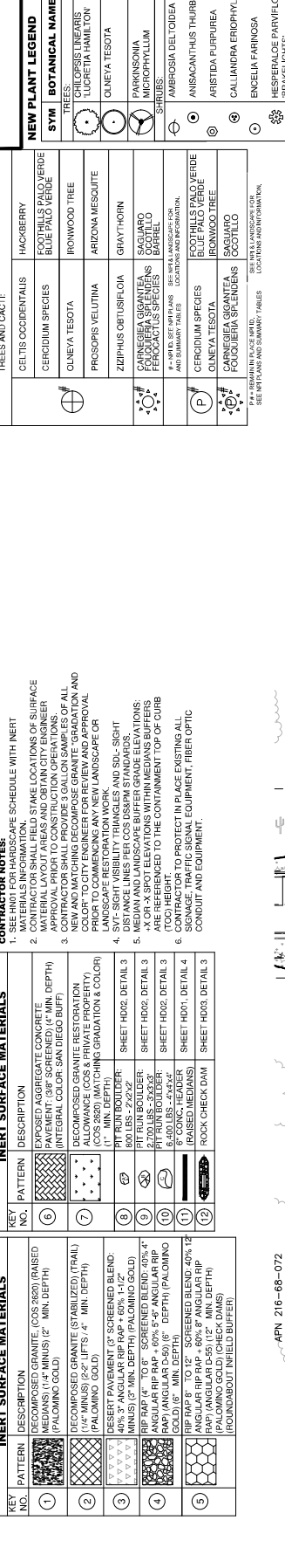
CONTRACTOR NOTES:
 1. MATERIALS INFORMATION: SEE SCHEDULE WITH INERT MATERIALS INFORMATION.
 2. CONTRACTOR SHALL FIELD STAKE LOCATIONS OF SURFACE MATERIAL LAYOUT AREAS AND OBTAIN CITY ENGINEER APPROVAL.
 3. CONTRACTOR SHALL PROVIDE 3 GALLON SAMPLES OF ALL NEW AND MATCHING DECOMPOSED GRANITE (GRADATION AND COLOR) TO CITY ENGINEER FOR REVIEW AND APPROVAL.
 4. S.V.T. SIGHT VISIBILITY TRIANGLES AND S.D.L. SIGHT DISTANCE LINES PER COS USIPM STANDARDS.
 5. X OR X SPOT ELEVATIONS WITHIN MEDIANS BUFFERS ARE REFERENCED TO THE CONTAINMENT TOP OF CURB FOOD HEIGHT.
 6. SIGNAGE, TRAFFIC SIGNAL EQUIPMENT, FIBER OPTIC CONDUIT AND EQUIPMENT.

KEY NO.	PATTERN	DESCRIPTION
1	[Pattern]	DECOMPOSED GRANITE (COS 2620) (RAISED MEDIANS) (1"4" MINUS) (2" MIN. DEPTH) (PALMINGO GOLD)
2	[Pattern]	DECOMPOSED GRANITE (STABILIZED) (TRAIL) (1"4" MINUS) (2"4" LIFTS) (4" MIN. DEPTH) (PALMINGO GOLD)
3	[Pattern]	DECOMPOSED GRANITE (SCREENED BLEND) (RIP RAP 4" TO 6" SCREENED BLEND-40% 4" ANGLULAR RIP RAP + 60% 5" ANGLULAR RIP RAP) (MINUS) (2" MIN. DEPTH) (PALMINGO GOLD) (8" MIN. DEPTH)
4	[Pattern]	DECOMPOSED GRANITE (SCREENED BLEND) (RIP RAP 8" TO 12" SCREENED BLEND-40% 12" ANGLULAR RIP RAP + 60% 5" ANGLULAR RIP RAP) (ANGULAR D-55) (2" MIN. DEPTH) (ROUNDABOUT INFIELD BUFFER)

KEY NO.	PATTERN	DESCRIPTION
6	[Pattern]	EXPOSED AGGREGATE CONCRETE PAVEMENT (3/4" SCREENED) (4" MIN. DEPTH) (INTEGRAL COLOR: SAN DIEGO BUFF)
7	[Pattern]	DECOMPOSED GRANITE RESTORATION ALLOWANCE (COS & PRIVATE PROPERTY) (COS 2620) (MATCHING GRADATION & COLOR)
8	[Pattern]	PIT FILL BOLLIDER: SHEET HD02 DETAIL 3 (800 LBS. - 2'x2'x2')
9	[Pattern]	PIT FILL BOLLIDER: SHEET HD02 DETAIL 3 (800 LBS. - 2'x2'x2')
10	[Pattern]	PIT FILL BOLLIDER: SHEET HD03 DETAIL 3 (6-400 LBS. - 4'x4'x4')
11	[Pattern]	PIT FILL BOLLIDER: SHEET HD01 DETAIL 4 (BASED MEDIANS)
12	[Pattern]	ROCK CHECK DAM SHEET HD03 DETAIL 3

GENERAL NOTES:
 1. MATERIALS INFORMATION: SEE SCHEDULE WITH INERT MATERIALS INFORMATION.
 2. CONTRACTOR SHALL FIELD STAKE LOCATIONS OF SURFACE MATERIAL LAYOUT AREAS AND OBTAIN CITY ENGINEER APPROVAL.
 3. CONTRACTOR SHALL PROVIDE 3 GALLON SAMPLES OF ALL NEW AND MATCHING DECOMPOSED GRANITE (GRADATION AND COLOR) TO CITY ENGINEER FOR REVIEW AND APPROVAL.
 4. S.V.T. SIGHT VISIBILITY TRIANGLES AND S.D.L. SIGHT DISTANCE LINES PER COS USIPM STANDARDS.
 5. X OR X SPOT ELEVATIONS WITHIN MEDIANS BUFFERS ARE REFERENCED TO THE CONTAINMENT TOP OF CURB FOOD HEIGHT.
 6. SIGNAGE, TRAFFIC SIGNAL EQUIPMENT, FIBER OPTIC CONDUIT AND EQUIPMENT.

CONTRACTOR NOTES:
 1. MATERIALS INFORMATION: SEE SCHEDULE WITH INERT MATERIALS INFORMATION.
 2. CONTRACTOR SHALL FIELD STAKE LOCATIONS OF SURFACE MATERIAL LAYOUT AREAS AND OBTAIN CITY ENGINEER APPROVAL.
 3. CONTRACTOR SHALL PROVIDE 3 GALLON SAMPLES OF ALL NEW AND MATCHING DECOMPOSED GRANITE (GRADATION AND COLOR) TO CITY ENGINEER FOR REVIEW AND APPROVAL.
 4. S.V.T. SIGHT VISIBILITY TRIANGLES AND S.D.L. SIGHT DISTANCE LINES PER COS USIPM STANDARDS.
 5. X OR X SPOT ELEVATIONS WITHIN MEDIANS BUFFERS ARE REFERENCED TO THE CONTAINMENT TOP OF CURB FOOD HEIGHT.
 6. SIGNAGE, TRAFFIC SIGNAL EQUIPMENT, FIBER OPTIC CONDUIT AND EQUIPMENT.

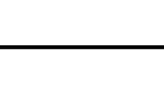
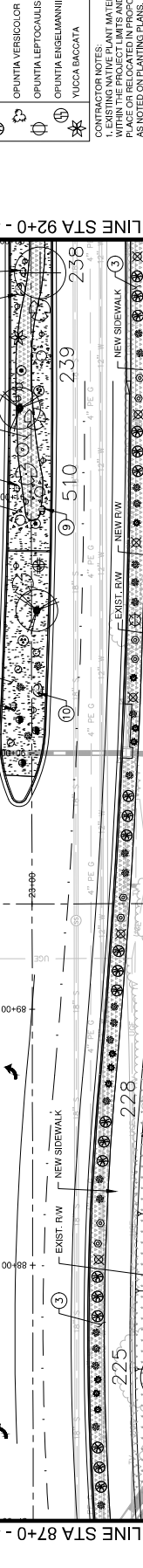


SYM	BOTANICAL NAME	COMMON NAME
	TREES AND CACTI:	
	CELTRIS OCCIDENTALIS	HACKBERRY
	CERCIDIMUM SPECIES	SCOTTIS PALM VERDE
	OLIVEA TESOTA	IRONWOOD TREE
	PROSOPIS VELUTINA	ARIZONA MESQUITE
	ZAPHRAUS OBUSIFLORA	GRAY THORN
	CARNEGIEA GRANIFLORA	SAGUARO BARREL
	FEROCACTUS SPECIES	SAGUARO BARREL
	OLIVEA TESOTA	IRONWOOD TREE
	CARNEGIEA GRANIFLORA	SAGUARO BARREL
	FEROCACTUS SPECIES	SAGUARO BARREL

SYM	BOTANICAL NAME	COMMON NAME
	AMBROSIA DELTOIDEA	BURSAGE
	ANISANTHUS THURBERI	DESERT HONEYBUCKLE
	ARISTIDA PURPUREA	PURPLE THREEWAIN
	CALLANDRA EROPHYLLA	PINK FAIRY DUSTER
	ENCELIA FARINOSA	BRITTLERUSH
	HESPERALOE PARVIFLORA	BEAKLIGHTS
	TRAVELIGHTS	HESPERALOE
	JUSTICIA CALIFORNICA	CHUPAROSA
	LARREA TRIDENTATA	CREOSOTE
	GROUNDCOVERS:	
	ABRONIA VILGOSA	SAND VERBENA
	BAILEYA MULTIRADIATA	DESERT MARIGOLD
	PENSTEMON PARRYI	PARRY'S PENSTEMON
	ACCENTS/CACTUS:	
	ALOË 'BLUE ELF'	'BLUE ELF' ALOË
	CARNEGIEA GIGANTEA	SAGUARO
	DASYLIRION WHEELERI	DESERT SPOON
	ECHINOCEBUS ENGLEMANNI	HEDGEHOG CACTUS
	FEROCACTUS WISLIZENI	FISHHOOK BARREL CACTUS
	FOUQUIERA SPLENDENS	COOTILLO
	MUHLENBERGIA CAPILLARIS	REGALIST
	OPUNTIA VERSICOLOR	STAGHORN CHolla
	OPUNTIA LEPTOCALUS	DESERT CHRISTMAS CHolla
	OPUNTIA ENGELMANNII	ENGELMANN'S PRICKLY PEAR
	YUCCA BACCATA	BANANA YUCCA

CONTRACTOR NOTES:
 1. MATERIALS INFORMATION: SEE SCHEDULE WITH INERT MATERIALS INFORMATION.
 2. CONTRACTOR SHALL FIELD STAKE LOCATIONS OF SURFACE MATERIAL LAYOUT AREAS AND OBTAIN CITY ENGINEER APPROVAL.
 3. CONTRACTOR SHALL PROVIDE 3 GALLON SAMPLES OF ALL NEW AND MATCHING DECOMPOSED GRANITE (GRADATION AND COLOR) TO CITY ENGINEER FOR REVIEW AND APPROVAL.
 4. S.V.T. SIGHT VISIBILITY TRIANGLES AND S.D.L. SIGHT DISTANCE LINES PER COS USIPM STANDARDS.
 5. X OR X SPOT ELEVATIONS WITHIN MEDIANS BUFFERS ARE REFERENCED TO THE CONTAINMENT TOP OF CURB FOOD HEIGHT.
 6. SIGNAGE, TRAFFIC SIGNAL EQUIPMENT, FIBER OPTIC CONDUIT AND EQUIPMENT.

CONTRACTOR NOTES:
 1. MATERIALS INFORMATION: SEE SCHEDULE WITH INERT MATERIALS INFORMATION.
 2. CONTRACTOR SHALL FIELD STAKE LOCATIONS OF SURFACE MATERIAL LAYOUT AREAS AND OBTAIN CITY ENGINEER APPROVAL.
 3. CONTRACTOR SHALL PROVIDE 3 GALLON SAMPLES OF ALL NEW AND MATCHING DECOMPOSED GRANITE (GRADATION AND COLOR) TO CITY ENGINEER FOR REVIEW AND APPROVAL.
 4. S.V.T. SIGHT VISIBILITY TRIANGLES AND S.D.L. SIGHT DISTANCE LINES PER COS USIPM STANDARDS.
 5. X OR X SPOT ELEVATIONS WITHIN MEDIANS BUFFERS ARE REFERENCED TO THE CONTAINMENT TOP OF CURB FOOD HEIGHT.
 6. SIGNAGE, TRAFFIC SIGNAL EQUIPMENT, FIBER OPTIC CONDUIT AND EQUIPMENT.

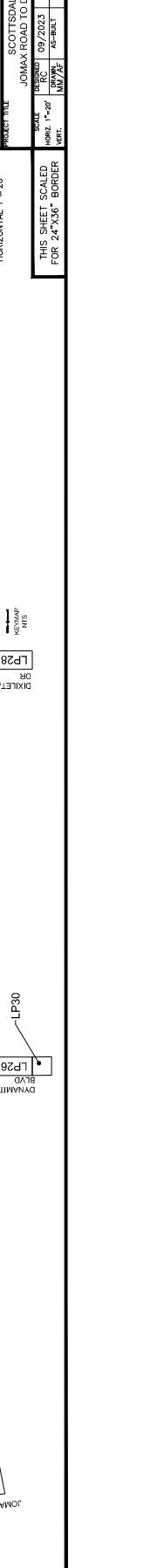


SYM	BOTANICAL NAME	COMMON NAME
	TREES AND CACTI:	
	CELTRIS OCCIDENTALIS	HACKBERRY
	CERCIDIMUM SPECIES	SCOTTIS PALM VERDE
	OLIVEA TESOTA	IRONWOOD TREE
	PROSOPIS VELUTINA	ARIZONA MESQUITE
	ZAPHRAUS OBUSIFLORA	GRAY THORN
	CARNEGIEA GRANIFLORA	SAGUARO BARREL
	FEROCACTUS SPECIES	SAGUARO BARREL
	OLIVEA TESOTA	IRONWOOD TREE
	CARNEGIEA GRANIFLORA	SAGUARO BARREL
	FEROCACTUS SPECIES	SAGUARO BARREL

SYM	BOTANICAL NAME	COMMON NAME
	AMBROSIA DELTOIDEA	BURSAGE
	ANISANTHUS THURBERI	DESERT HONEYBUCKLE
	ARISTIDA PURPUREA	PURPLE THREEWAIN
	CALLANDRA EROPHYLLA	PINK FAIRY DUSTER
	ENCELIA FARINOSA	BRITTLERUSH
	HESPERALOE PARVIFLORA	BEAKLIGHTS
	TRAVELIGHTS	HESPERALOE
	JUSTICIA CALIFORNICA	CHUPAROSA
	LARREA TRIDENTATA	CREOSOTE
	GROUNDCOVERS:	
	ABRONIA VILGOSA	SAND VERBENA
	BAILEYA MULTIRADIATA	DESERT MARIGOLD
	PENSTEMON PARRYI	PARRY'S PENSTEMON
	ACCENTS/CACTUS:	
	ALOË 'BLUE ELF'	'BLUE ELF' ALOË
	CARNEGIEA GIGANTEA	SAGUARO
	DASYLIRION WHEELERI	DESERT SPOON
	ECHINOCEBUS ENGLEMANNI	HEDGEHOG CACTUS
	FEROCACTUS WISLIZENI	FISHHOOK BARREL CACTUS
	FOUQUIERA SPLENDENS	COOTILLO
	MUHLENBERGIA CAPILLARIS	REGALIST
	OPUNTIA VERSICOLOR	STAGHORN CHolla
	OPUNTIA LEPTOCALUS	DESERT CHRISTMAS CHolla
	OPUNTIA ENGELMANNII	ENGELMANN'S PRICKLY PEAR
	YUCCA BACCATA	BANANA YUCCA

CONTRACTOR NOTES:
 1. MATERIALS INFORMATION: SEE SCHEDULE WITH INERT MATERIALS INFORMATION.
 2. CONTRACTOR SHALL FIELD STAKE LOCATIONS OF SURFACE MATERIAL LAYOUT AREAS AND OBTAIN CITY ENGINEER APPROVAL.
 3. CONTRACTOR SHALL PROVIDE 3 GALLON SAMPLES OF ALL NEW AND MATCHING DECOMPOSED GRANITE (GRADATION AND COLOR) TO CITY ENGINEER FOR REVIEW AND APPROVAL.
 4. S.V.T. SIGHT VISIBILITY TRIANGLES AND S.D.L. SIGHT DISTANCE LINES PER COS USIPM STANDARDS.
 5. X OR X SPOT ELEVATIONS WITHIN MEDIANS BUFFERS ARE REFERENCED TO THE CONTAINMENT TOP OF CURB FOOD HEIGHT.
 6. SIGNAGE, TRAFFIC SIGNAL EQUIPMENT, FIBER OPTIC CONDUIT AND EQUIPMENT.

CONTRACTOR NOTES:
 1. MATERIALS INFORMATION: SEE SCHEDULE WITH INERT MATERIALS INFORMATION.
 2. CONTRACTOR SHALL FIELD STAKE LOCATIONS OF SURFACE MATERIAL LAYOUT AREAS AND OBTAIN CITY ENGINEER APPROVAL.
 3. CONTRACTOR SHALL PROVIDE 3 GALLON SAMPLES OF ALL NEW AND MATCHING DECOMPOSED GRANITE (GRADATION AND COLOR) TO CITY ENGINEER FOR REVIEW AND APPROVAL.
 4. S.V.T. SIGHT VISIBILITY TRIANGLES AND S.D.L. SIGHT DISTANCE LINES PER COS USIPM STANDARDS.
 5. X OR X SPOT ELEVATIONS WITHIN MEDIANS BUFFERS ARE REFERENCED TO THE CONTAINMENT TOP OF CURB FOOD HEIGHT.
 6. SIGNAGE, TRAFFIC SIGNAL EQUIPMENT, FIBER OPTIC CONDUIT AND EQUIPMENT.



CONTRACTOR NOTES:
 1. MATERIALS INFORMATION: SEE SCHEDULE WITH INERT MATERIALS INFORMATION.
 2. CONTRACTOR SHALL FIELD STAKE LOCATIONS OF SURFACE MATERIAL LAYOUT AREAS AND OBTAIN CITY ENGINEER APPROVAL.
 3. CONTRACTOR SHALL PROVIDE 3 GALLON SAMPLES OF ALL NEW AND MATCHING DECOMPOSED GRANITE (GRADATION AND COLOR) TO CITY ENGINEER FOR REVIEW AND APPROVAL.
 4. S.V.T. SIGHT VISIBILITY TRIANGLES AND S.D.L. SIGHT DISTANCE LINES PER COS USIPM STANDARDS.
 5. X OR X SPOT ELEVATIONS WITHIN MEDIANS BUFFERS ARE REFERENCED TO THE CONTAINMENT TOP OF CURB FOOD HEIGHT.
 6. SIGNAGE, TRAFFIC SIGNAL EQUIPMENT, FIBER OPTIC CONDUIT AND EQUIPMENT.

CONTRACTOR NOTES:
 1. MATERIALS INFORMATION: SEE SCHEDULE WITH INERT MATERIALS INFORMATION.
 2. CONTRACTOR SHALL FIELD STAKE LOCATIONS OF SURFACE MATERIAL LAYOUT AREAS AND OBTAIN CITY ENGINEER APPROVAL.
 3. CONTRACTOR SHALL PROVIDE 3 GALLON SAMPLES OF ALL NEW AND MATCHING DECOMPOSED GRANITE (GRADATION AND COLOR) TO CITY ENGINEER FOR REVIEW AND APPROVAL.
 4. S.V.T. SIGHT VISIBILITY TRIANGLES AND S.D.L. SIGHT DISTANCE LINES PER COS USIPM STANDARDS.
 5. X OR X SPOT ELEVATIONS WITHIN MEDIANS BUFFERS ARE REFERENCED TO THE CONTAINMENT TOP OF CURB FOOD HEIGHT.
 6. SIGNAGE, TRAFFIC SIGNAL EQUIPMENT, FIBER OPTIC CONDUIT AND EQUIPMENT.

CONTRACTOR NOTES:
 1. MATERIALS INFORMATION: SEE SCHEDULE WITH INERT MATERIALS INFORMATION.
 2. CONTRACTOR SHALL FIELD STAKE LOCATIONS OF SURFACE MATERIAL LAYOUT AREAS AND OBTAIN CITY ENGINEER APPROVAL.
 3. CONTRACTOR SHALL PROVIDE 3 GALLON SAMPLES OF ALL NEW AND MATCHING DECOMPOSED GRANITE (GRADATION AND COLOR) TO CITY ENGINEER FOR REVIEW AND APPROVAL.
 4. S.V.T. SIGHT VISIBILITY TRIANGLES AND S.D.L. SIGHT DISTANCE LINES PER COS USIPM STANDARDS.
 5. X OR X SPOT ELEVATIONS WITHIN MEDIANS BUFFERS ARE REFERENCED TO THE CONTAINMENT TOP OF CURB FOOD HEIGHT.
 6. SIGNAGE, TRAFFIC SIGNAL EQUIPMENT, FIBER OPTIC CONDUIT AND EQUIPMENT.

CONTRACTOR NOTES:
 1. MATERIALS INFORMATION: SEE SCHEDULE WITH INERT MATERIALS INFORMATION.
 2. CONTRACTOR SHALL FIELD STAKE LOCATIONS OF SURFACE MATERIAL LAYOUT AREAS AND OBTAIN CITY ENGINEER APPROVAL.
 3. CONTRACTOR SHALL PROVIDE 3 GALLON SAMPLES OF ALL NEW AND MATCHING DECOMPOSED GRANITE (GRADATION AND COLOR) TO CITY ENGINEER FOR REVIEW AND APPROVAL.
 4. S.V.T. SIGHT VISIBILITY TRIANGLES AND S.D.L. SIGHT DISTANCE LINES PER COS USIPM STANDARDS.
 5. X OR X SPOT ELEVATIONS WITHIN MEDIANS BUFFERS ARE REFERENCED TO THE CONTAINMENT TOP OF CURB FOOD HEIGHT.
 6. SIGNAGE, TRAFFIC SIGNAL EQUIPMENT, FIBER OPTIC CONDUIT AND EQUIPMENT.

CONTRACTOR NOTES:
 1. MATERIALS INFORMATION: SEE SCHEDULE WITH INERT MATERIALS INFORMATION.
 2. CONTRACTOR SHALL FIELD STAKE LOCATIONS OF SURFACE MATERIAL LAYOUT AREAS AND OBTAIN CITY ENGINEER APPROVAL.
 3. CONTRACTOR SHALL PROVIDE 3 GALLON SAMPLES OF ALL NEW AND MATCHING DECOMPOSED GRANITE (GRADATION AND COLOR) TO CITY ENGINEER FOR REVIEW AND APPROVAL.
 4. S.V.T. SIGHT VISIBILITY TRIANGLES AND S.D.L. SIGHT DISTANCE LINES PER COS USIPM STANDARDS.
 5. X OR X SPOT ELEVATIONS WITHIN MEDIANS BUFFERS ARE REFERENCED TO THE CONTAINMENT TOP OF CURB FOOD HEIGHT.
 6. SIGNAGE, TRAFFIC SIGNAL EQUIPMENT, FIBER OPTIC CONDUIT AND EQUIPMENT.

CONTRACTOR NOTES:
 1. MATERIALS INFORMATION: SEE SCHEDULE WITH INERT MATERIALS INFORMATION.
 2. CONTRACTOR SHALL FIELD STAKE LOCATIONS OF SURFACE MATERIAL LAYOUT AREAS AND OBTAIN CITY ENGINEER APPROVAL.
 3. CONTRACTOR SHALL PROVIDE 3 GALLON SAMPLES OF ALL NEW AND MATCHING DECOMPOSED GRANITE (GRADATION AND COLOR) TO CITY ENGINEER FOR REVIEW AND APPROVAL.
 4. S.V.T. SIGHT VISIBILITY TRIANGLES AND S.D.L. SIGHT DISTANCE LINES PER COS USIPM STANDARDS.
 5. X OR X SPOT ELEVATIONS WITHIN MEDIANS BUFFERS ARE REFERENCED TO THE CONTAINMENT TOP OF CURB FOOD HEIGHT.
 6. SIGNAGE, TRAFFIC SIGNAL EQUIPMENT, FIBER OPTIC CONDUIT AND EQUIPMENT.

CONTRACTOR NOTES:
 1. MATERIALS INFORMATION: SEE SCHEDULE WITH INERT MATERIALS INFORMATION.
 2. CONTRACTOR SHALL FIELD STAKE LOCATIONS OF SURFACE MATERIAL LAYOUT AREAS AND OBTAIN CITY ENGINEER APPROVAL.
 3. CONTRACTOR SHALL PROVIDE 3 GALLON SAMPLES OF ALL NEW AND MATCHING DECOMPOSED GRANITE (GRADATION AND COLOR) TO CITY ENGINEER FOR REVIEW AND APPROVAL.
 4. S.V.T. SIGHT VISIBILITY TRIANGLES AND S.D.L. SIGHT DISTANCE LINES PER COS USIPM STANDARDS.
 5. X OR X SPOT ELEVATIONS WITHIN MEDIANS BUFFERS ARE REFERENCED TO THE CONTAINMENT TOP OF CURB FOOD HEIGHT.
 6. SIGNAGE, TRAFFIC SIGNAL EQUIPMENT, FIBER OPTIC CONDUIT AND EQUIPMENT.

CONTRACTOR NOTES:
 1. MATERIALS INFORMATION: SEE SCHEDULE WITH INERT MATERIALS INFORMATION.
 2. CONTRACTOR SHALL FIELD STAKE LOCATIONS OF SURFACE MATERIAL LAYOUT AREAS AND OBTAIN CITY ENGINEER APPROVAL.
 3. CONTRACTOR SHALL PROVIDE 3 GALLON SAMPLES OF ALL NEW AND MATCHING DECOMPOSED GRANITE (GRADATION AND COLOR) TO CITY ENGINEER FOR REVIEW AND APPROVAL.
 4. S.V.T. SIGHT VISIBILITY TRIANGLES AND S.D.L. SIGHT DISTANCE LINES PER COS USIPM STANDARDS.
 5. X OR X SPOT ELEVATIONS WITHIN MEDIANS BUFFERS ARE REFERENCED TO THE CONTAINMENT TOP OF CURB FOOD HEIGHT.
 6. SIGNAGE, TRAFFIC SIGNAL EQUIPMENT, FIBER OPTIC CONDUIT AND EQUIPMENT.



LANDSCAPE LEGEND

SYM	BOTANICAL NAME	COMMON NAME
(T)	TREES AND CACTI	
(S)	CELTIS OCCIDENTALIS	HACKBERRY
(C)	CERCIDIMUM SPECIES	SCOTTIS PALM VERDE
(O)	OLIVEA TESOTA	IRONWOOD TREE
(P)	PROSOPIS VELUTINA	ARIZONA MESQUITE
(Z)	ZEPHYRUS OBUSIFLORA	GRAY THORN
(C)	CARNEGIEA GIGANTEA	SAGUARO
(S)	FEROCACTUS SPECIES	IRONWOOD PALM
(P)	CERCIDIMUM SPECIES	SCOTTIS PALM VERDE
(O)	OLIVEA TESOTA	IRONWOOD TREE
(C)	CARNEGIEA GIGANTEA	SAGUARO
(S)	FEROCACTUS SPECIES	IRONWOOD PALM

GENERAL NOTES

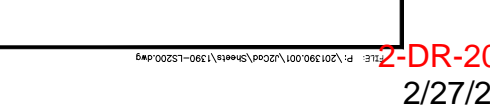
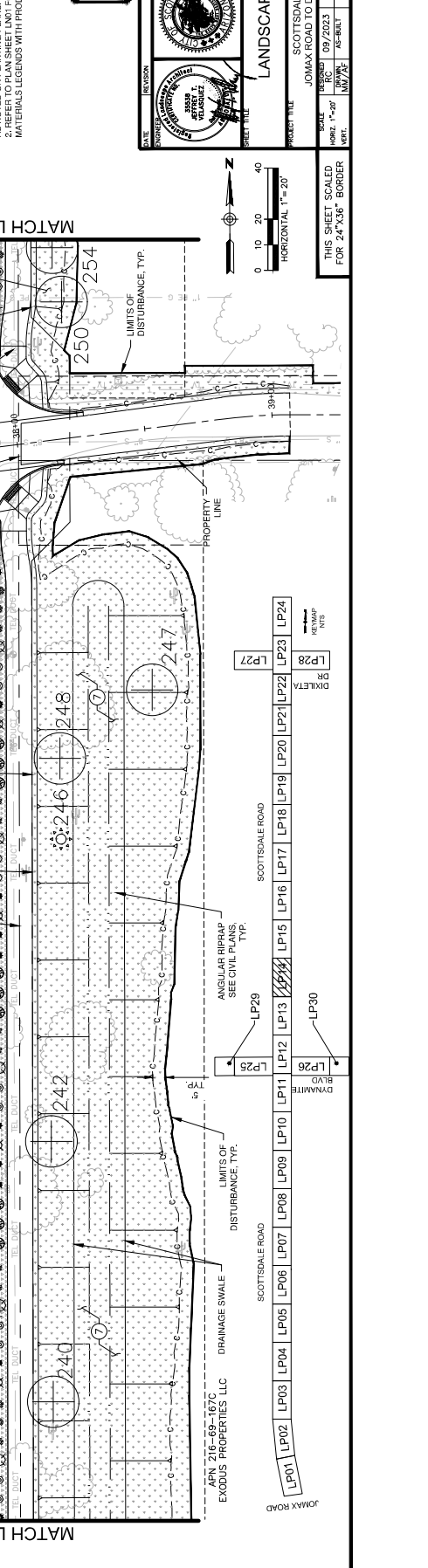
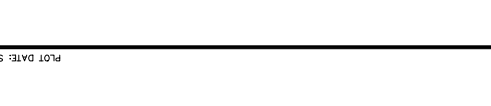
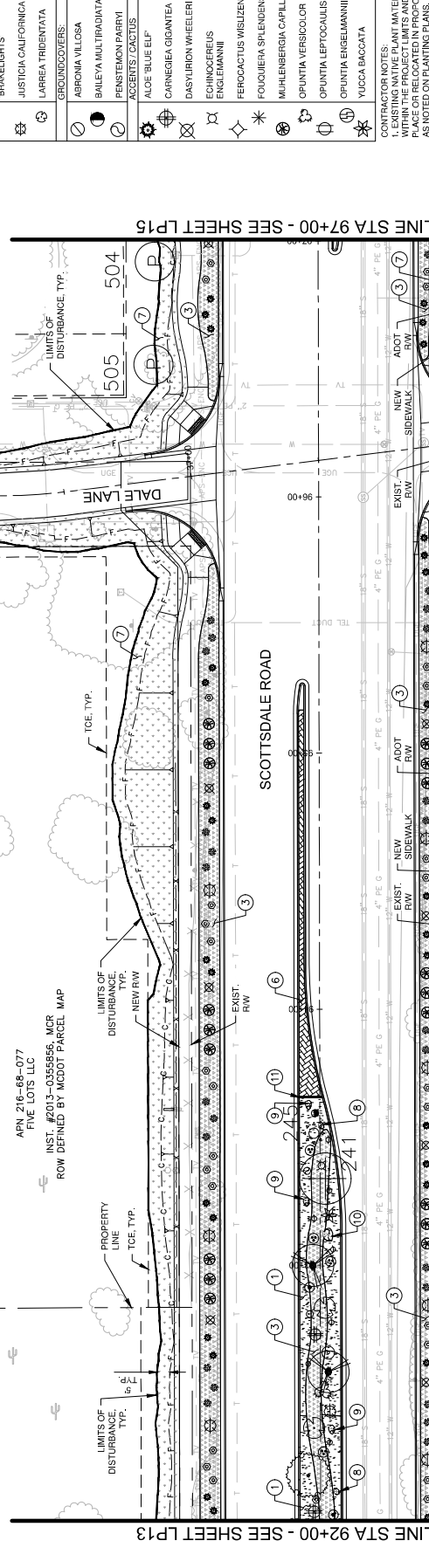
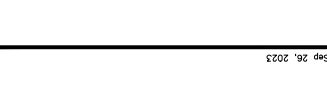
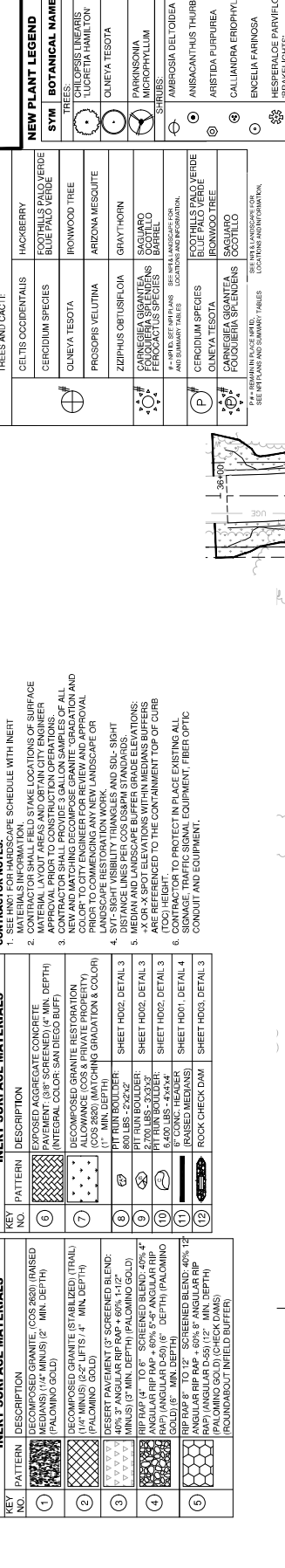
- CONTRACTOR NOTES: LANDSCAPE SCHEDULE WITH INERT
- MATERIALS INFORMATION:
- CONTRACTOR SHALL FIELD STAKE LOCATIONS OF SURFACE ROOT AREAS AND RECORD AND REPORT TO ENGINEER
- CONTRACTOR SHALL PROVIDE 3 GALLON SAMPLES OF ALL NEW AND MATCHING DECOMPOSED GRANITE, GRADATION AND SOIL TO BE USED IN THE PROJECT FOR TESTING AND APPROVAL PRIOR TO COMMENCING ANY NEW LANDSCAPE OR LANDSCAPE RESTORATION WORK.
- SVL-SIGHT VISIBILITY TRIANGLES AND SUC-SIGHT TRIANGLES SHALL BE INSTALLED IN ACCORDANCE WITH MEDIAN AND LANDSCAPE BUFFER GRADIENT ELEVATIONS ARE REFERENCED TO THE CONTAINMENT TOP OF CURB
- CONTRACTOR TO PROTECT IN PLACE EXISTING ALL SIGNAGE, TRAFFIC SIGNAL EQUIPMENT, FIBER OPTIC CONDUIT AND EQUIPMENT.

HARDSCAPE LEGEND CONT.

KEY NO.	PATTERN	DESCRIPTION
(6)	(Pattern)	EXPOSED AGGREGATE CONCRETE (PAVEMENT: (3" SCREENED) 4" MIN. DEPTH) (INTEGRAL COLOR: SAN DIEGO BUFF)
(7)	(Pattern)	DECOMPOSED GRANITE RESTORATION ALLOWANCE (COCS & PRIVATE PROPERTY) (1" MIN. DEPTH)
(8)	(Pattern)	PIT RUN BOLLER: SHEET HOOD: DETAIL 3
(9)	(Pattern)	SHEET HOOD: DETAIL 3
(10)	(Pattern)	PIT RUN BOLLER: SHEET HOOD: DETAIL 3
(11)	(Pattern)	RAISED MEDIAN: SHEET HOOD: DETAIL 4
(12)	(Pattern)	ROCK CHECK DAM: SHEET HOOD: DETAIL 3

HARDSCAPE LEGEND

KEY NO.	DESCRIPTION
(1)	DECOMPOSED GRANITE, (COCS 2620) (RAISED MEDIAN) (1/4" MINUS) (2" MIN. DEPTH) (PALMADO GOLD)
(2)	DECOMPOSED GRANITE (STABILIZED) (TRIAL) (1/4" MINUS) (2" MIN. DEPTH) (PALMADO GOLD)
(3)	DESERT PAVEMENT (2" SCREENED B END: 40% 3" ANGULAR RIP PAP + 60% 1/4" 1/2" MINUS) (1/4" MINUS) (2" MIN. DEPTH) (PALMADO GOLD)
(4)	ANGULAR RIP PAP - 60% 3" ANGULAR RIP PAP + 40% 1/4" 1/2" MINUS) (1/4" MINUS) (2" MIN. DEPTH) (PALMADO GOLD)
(5)	ANGULAR RIP PAP - 60% 3" ANGULAR RIP PAP + 40% 1/4" 1/2" MINUS) (1/4" MINUS) (2" MIN. DEPTH) (PALMADO GOLD) (CHECK DAM) (ROUNDABOUT INFIELD BUFFER)



SYM	BOTANICAL NAME	COMMON NAME
(T)	TREES AND CACTI	
(S)	CELTIS OCCIDENTALIS	HACKBERRY
(C)	CERCIDIMUM SPECIES	SCOTTIS PALM VERDE
(O)	OLIVEA TESOTA	IRONWOOD TREE
(P)	PROSOPIS VELUTINA	ARIZONA MESQUITE
(Z)	ZEPHYRUS OBUSIFLORA	GRAY THORN
(C)	CARNEGIEA GIGANTEA	SAGUARO
(S)	FEROCACTUS SPECIES	IRONWOOD PALM
(P)	CERCIDIMUM SPECIES	SCOTTIS PALM VERDE
(O)	OLIVEA TESOTA	IRONWOOD TREE
(C)	CARNEGIEA GIGANTEA	SAGUARO
(S)	FEROCACTUS SPECIES	IRONWOOD PALM

LANDSCAPE LEGEND

SYM	BOTANICAL NAME	COMMON NAME
(T)	TREES AND CACTI	
(S)	CELTIS OCCIDENTALIS	HACKBERRY
(C)	CERCIDIMUM SPECIES	SCOTTIS PALM VERDE
(O)	OLIVEA TESOTA	IRONWOOD TREE
(P)	PROSOPIS VELUTINA	ARIZONA MESQUITE
(Z)	ZEPHYRUS OBUSIFLORA	GRAY THORN
(C)	CARNEGIEA GIGANTEA	SAGUARO
(S)	FEROCACTUS SPECIES	IRONWOOD PALM
(P)	CERCIDIMUM SPECIES	SCOTTIS PALM VERDE
(O)	OLIVEA TESOTA	IRONWOOD TREE
(C)	CARNEGIEA GIGANTEA	SAGUARO
(S)	FEROCACTUS SPECIES	IRONWOOD PALM

GENERAL NOTES

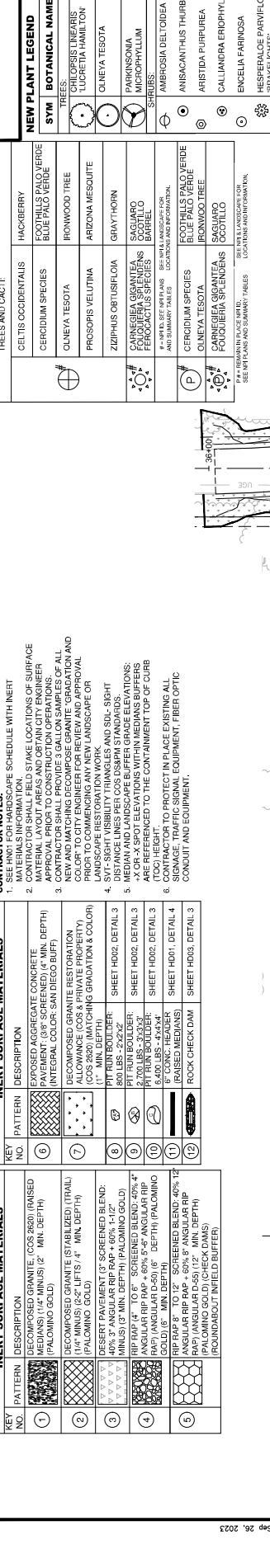
- CONTRACTOR NOTES: LANDSCAPE SCHEDULE WITH INERT
- MATERIALS INFORMATION:
- CONTRACTOR SHALL FIELD STAKE LOCATIONS OF SURFACE ROOT AREAS AND RECORD AND REPORT TO ENGINEER
- CONTRACTOR SHALL PROVIDE 3 GALLON SAMPLES OF ALL NEW AND MATCHING DECOMPOSED GRANITE, GRADATION AND SOIL TO BE USED IN THE PROJECT FOR TESTING AND APPROVAL PRIOR TO COMMENCING ANY NEW LANDSCAPE OR LANDSCAPE RESTORATION WORK.
- SVL-SIGHT VISIBILITY TRIANGLES AND SUC-SIGHT TRIANGLES SHALL BE INSTALLED IN ACCORDANCE WITH MEDIAN AND LANDSCAPE BUFFER GRADIENT ELEVATIONS ARE REFERENCED TO THE CONTAINMENT TOP OF CURB
- CONTRACTOR TO PROTECT IN PLACE EXISTING ALL SIGNAGE, TRAFFIC SIGNAL EQUIPMENT, FIBER OPTIC CONDUIT AND EQUIPMENT.

HARDSCAPE LEGEND CONT.

KEY NO.	PATTERN	DESCRIPTION
(6)	(Pattern)	EXPOSED AGGREGATE CONCRETE (PAVEMENT: (3" SCREENED) 4" MIN. DEPTH) (INTEGRAL COLOR: SAN DIEGO BUFF)
(7)	(Pattern)	DECOMPOSED GRANITE RESTORATION ALLOWANCE (COCS & PRIVATE PROPERTY) (1" MIN. DEPTH)
(8)	(Pattern)	PIT RUN BOLLER: SHEET HOOD: DETAIL 3
(9)	(Pattern)	SHEET HOOD: DETAIL 3
(10)	(Pattern)	PIT RUN BOLLER: SHEET HOOD: DETAIL 3
(11)	(Pattern)	RAISED MEDIAN: SHEET HOOD: DETAIL 4
(12)	(Pattern)	ROCK CHECK DAM: SHEET HOOD: DETAIL 3

HARDSCAPE LEGEND

KEY NO.	DESCRIPTION
(1)	DECOMPOSED GRANITE, (COCS 2620) (RAISED MEDIAN) (1/4" MINUS) (2" MIN. DEPTH) (PALMADO GOLD)
(2)	DECOMPOSED GRANITE (STABILIZED) (TRIAL) (1/4" MINUS) (2" MIN. DEPTH) (PALMADO GOLD)
(3)	DESERT PAVEMENT (2" SCREENED B END: 40% 3" ANGULAR RIP PAP + 60% 1/4" 1/2" MINUS) (1/4" MINUS) (2" MIN. DEPTH) (PALMADO GOLD)
(4)	ANGULAR RIP PAP - 60% 3" ANGULAR RIP PAP + 40% 1/4" 1/2" MINUS) (1/4" MINUS) (2" MIN. DEPTH) (PALMADO GOLD)
(5)	ANGULAR RIP PAP - 60% 3" ANGULAR RIP PAP + 40% 1/4" 1/2" MINUS) (1/4" MINUS) (2" MIN. DEPTH) (PALMADO GOLD) (CHECK DAM) (ROUNDABOUT INFIELD BUFFER)



LANDSCAPE LEGEND

GENERAL NOTES:

- CONTRACTOR SHALL SCHEDULE WITH INERT MATERIALS INFORMATION.
- MATERIALS INFORMATION.
- CONTRACTOR SHALL FIELD STAKE LOCATIONS OF SURFACE MATERIAL LAYOUT AREAS AND OBTAIN CITY ENGINEER APPROVAL.
- CONTRACTOR SHALL PROVIDE 3 GALLON SAMPLES OF ALL NEW AND MATCHING DECOMPOSED GRANITE GRADATION AND COLOR TO CITY ENGINEER FOR REVIEW AND APPROVAL.
- CONTRACTOR SHALL PROVIDE LANDSCAPE ON LANDSCAPE RESTORATION WORK.
- S-VT-SIGHT VISIBILITY TRIANGLES AND S-D-SIGHT DISTANCE LINES PER COS (OSHPM STANDARDS).
- 4" OR X-SPOT ELEVATIONS WITH MEDIAN BUFFERS (FOOT) HEIGHT.
- CONTRACTOR SHALL PROTECT IN PLACE EXISTING ALL SIGNAGE, TRAFFIC SIGNAL EQUIPMENT, FIBER OPTIC CONDUIT AND EQUIPMENT.

LANDSCAPE LEGEND

SALVAGE PLANT LEGEND

SYM	BOTANICAL NAME	COMMON NAME
(Tree symbol)	CELTS OCCIDENTALIS	HACKBERRY
(Tree symbol)	CERIDIMUM SPECIES	SCOTT'S PALO VERDE
(Tree symbol)	OLNEYA TESOTA	IRONWOOD TREE
(Tree symbol)	PROSOPIS VELUTINA	ARIZONA MESQUITE
(Tree symbol)	ZAPHRAUS OBUSIFLORA	GRAY THORN
(Tree symbol)	CARNIGIEA GRANITEA	SAGUARO
(Tree symbol)	FEROCACTUS SPECIES	CHolla
(Tree symbol)	OLNEYA TESOTA	IRONWOOD TREE
(Tree symbol)	CARNIGIEA GRANITEA	SAGUARO
(Tree symbol)	FEROCACTUS SPECIES	CHolla

LANDSCAPE LEGEND

NEW PLANT LEGEND

SYM	BOTANICAL NAME	COMMON NAME
(Tree symbol)	CELTS OCCIDENTALIS	HACKBERRY
(Tree symbol)	CERIDIMUM SPECIES	SCOTT'S PALO VERDE
(Tree symbol)	OLNEYA TESOTA	IRONWOOD TREE
(Tree symbol)	PROSOPIS VELUTINA	ARIZONA MESQUITE
(Tree symbol)	ZAPHRAUS OBUSIFLORA	GRAY THORN
(Tree symbol)	CARNIGIEA GRANITEA	SAGUARO
(Tree symbol)	FEROCACTUS SPECIES	CHolla
(Tree symbol)	OLNEYA TESOTA	IRONWOOD TREE
(Tree symbol)	CARNIGIEA GRANITEA	SAGUARO
(Tree symbol)	FEROCACTUS SPECIES	CHolla

LANDSCAPE LEGEND

CONTRACTOR NOTES:

- CONTRACTOR SHALL SCHEDULE WITH INERT MATERIALS INFORMATION.
- MATERIALS INFORMATION.
- CONTRACTOR SHALL FIELD STAKE LOCATIONS OF SURFACE MATERIAL LAYOUT AREAS AND OBTAIN CITY ENGINEER APPROVAL.
- CONTRACTOR SHALL PROVIDE 3 GALLON SAMPLES OF ALL NEW AND MATCHING DECOMPOSED GRANITE GRADATION AND COLOR TO CITY ENGINEER FOR REVIEW AND APPROVAL.
- CONTRACTOR SHALL PROVIDE LANDSCAPE ON LANDSCAPE RESTORATION WORK.
- S-VT-SIGHT VISIBILITY TRIANGLES AND S-D-SIGHT DISTANCE LINES PER COS (OSHPM STANDARDS).
- 4" OR X-SPOT ELEVATIONS WITH MEDIAN BUFFERS (FOOT) HEIGHT.
- CONTRACTOR SHALL PROTECT IN PLACE EXISTING ALL SIGNAGE, TRAFFIC SIGNAL EQUIPMENT, FIBER OPTIC CONDUIT AND EQUIPMENT.

LANDSCAPE LEGEND

LANDSCAPE LEGEND

KEY NO.	PATTERN	DESCRIPTION
1	(Pattern)	DECOMPOSED GRANITE (STABILIZED) (TRAIL MEDIANS) (1 1/2" MINUS) (2" MIN. DEPTH) (PALOMINO GOLD)
2	(Pattern)	DECOMPOSED GRANITE (STABILIZED) (TRAIL MEDIANS) (1 1/2" MINUS) (2" MIN. DEPTH) (PALOMINO GOLD)
3	(Pattern)	DECOMPOSED GRANITE (STABILIZED) (TRAIL MEDIANS) (1 1/2" MINUS) (2" MIN. DEPTH) (PALOMINO GOLD)
4	(Pattern)	DECOMPOSED GRANITE (STABILIZED) (TRAIL MEDIANS) (1 1/2" MINUS) (2" MIN. DEPTH) (PALOMINO GOLD)
5	(Pattern)	DECOMPOSED GRANITE (STABILIZED) (TRAIL MEDIANS) (1 1/2" MINUS) (2" MIN. DEPTH) (PALOMINO GOLD)

LANDSCAPE LEGEND

LANDSCAPE LEGEND

KEY NO.	PATTERN	DESCRIPTION
6	(Pattern)	EXPOSED AGGREGATE CONCRETE PAVEMENT (3/8" SCREENED) (4" MIN. DEPTH) (INTEGRAL COLOR: SAN DIEGO BUFF)
7	(Pattern)	DECOMPOSED GRANITE RESTORATION ALLOWANCE (COS & PRIVATE PROPERTY) (INTEGRAL COLOR: SAN DIEGO BUFF)
8	(Pattern)	PIT RIM BOLLIDER (SHEET H002 DETAIL 3) 800 LBS - 2'x2'-2"
9	(Pattern)	PIT RIM BOLLIDER (SHEET H002 DETAIL 3) 800 LBS - 2'x2'-2"
10	(Pattern)	PIT RIM BOLLIDER (SHEET H002 DETAIL 3) 800 LBS - 2'x2'-2"
11	(Pattern)	ROCK CHECK DAM (SHEET H001 DETAIL 4)
12	(Pattern)	ROCK CHECK DAM (SHEET H003 DETAIL 3)

LANDSCAPE LEGEND

LANDSCAPE LEGEND

KEY NO.	PATTERN	DESCRIPTION
1	(Pattern)	DECOMPOSED GRANITE (STABILIZED) (TRAIL MEDIANS) (1 1/2" MINUS) (2" MIN. DEPTH) (PALOMINO GOLD)
2	(Pattern)	DECOMPOSED GRANITE (STABILIZED) (TRAIL MEDIANS) (1 1/2" MINUS) (2" MIN. DEPTH) (PALOMINO GOLD)
3	(Pattern)	DECOMPOSED GRANITE (STABILIZED) (TRAIL MEDIANS) (1 1/2" MINUS) (2" MIN. DEPTH) (PALOMINO GOLD)
4	(Pattern)	DECOMPOSED GRANITE (STABILIZED) (TRAIL MEDIANS) (1 1/2" MINUS) (2" MIN. DEPTH) (PALOMINO GOLD)
5	(Pattern)	DECOMPOSED GRANITE (STABILIZED) (TRAIL MEDIANS) (1 1/2" MINUS) (2" MIN. DEPTH) (PALOMINO GOLD)

LANDSCAPE LEGEND

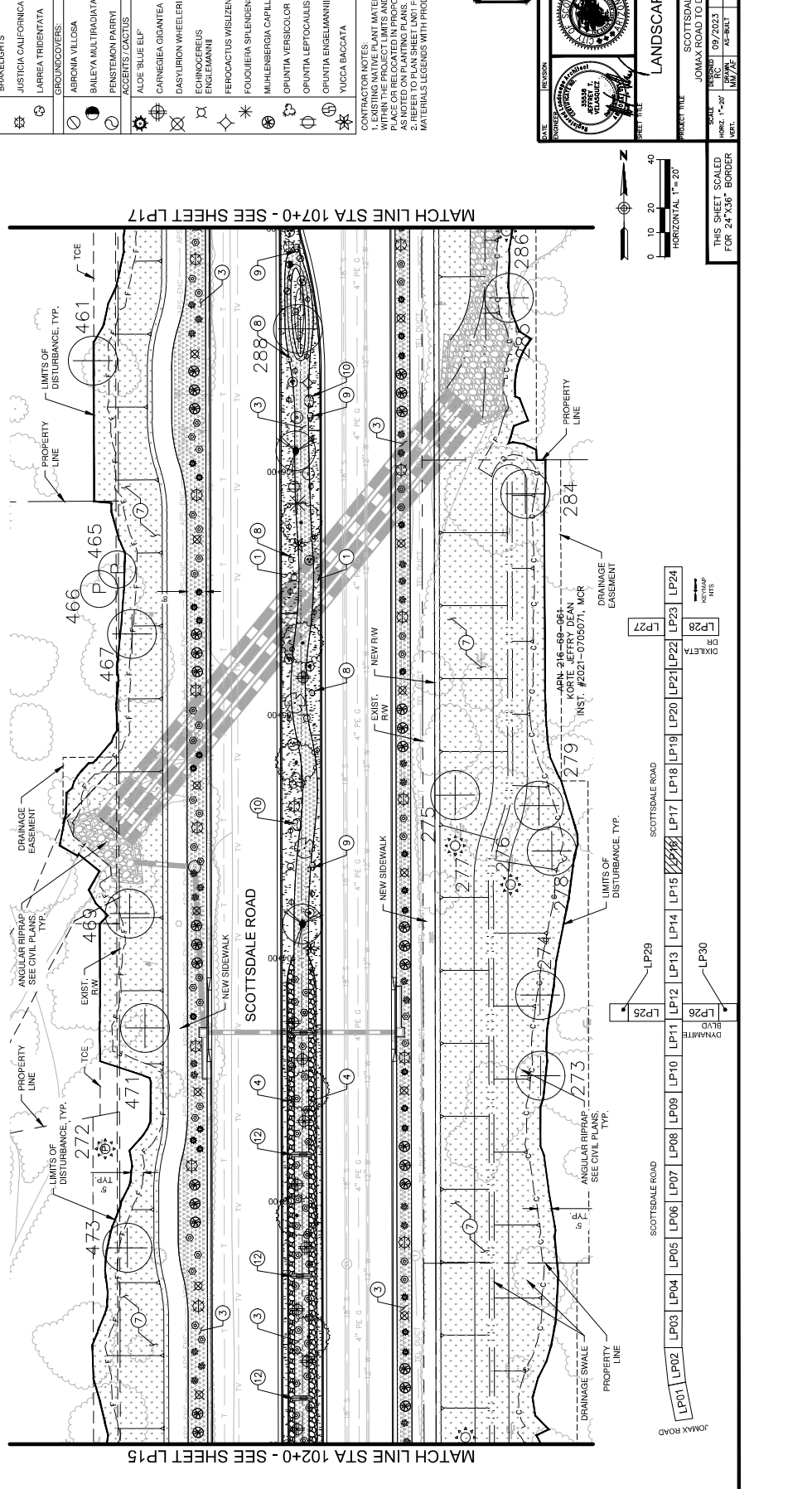
LANDSCAPE LEGEND

KEY NO.	PATTERN	DESCRIPTION
6	(Pattern)	EXPOSED AGGREGATE CONCRETE PAVEMENT (3/8" SCREENED) (4" MIN. DEPTH) (INTEGRAL COLOR: SAN DIEGO BUFF)
7	(Pattern)	DECOMPOSED GRANITE RESTORATION ALLOWANCE (COS & PRIVATE PROPERTY) (INTEGRAL COLOR: SAN DIEGO BUFF)
8	(Pattern)	PIT RIM BOLLIDER (SHEET H002 DETAIL 3) 800 LBS - 2'x2'-2"
9	(Pattern)	PIT RIM BOLLIDER (SHEET H002 DETAIL 3) 800 LBS - 2'x2'-2"
10	(Pattern)	PIT RIM BOLLIDER (SHEET H002 DETAIL 3) 800 LBS - 2'x2'-2"
11	(Pattern)	ROCK CHECK DAM (SHEET H001 DETAIL 4)
12	(Pattern)	ROCK CHECK DAM (SHEET H003 DETAIL 3)

LANDSCAPE LEGEND

LANDSCAPE LEGEND

KEY NO.	PATTERN	DESCRIPTION
1	(Pattern)	DECOMPOSED GRANITE (STABILIZED) (TRAIL MEDIANS) (1 1/2" MINUS) (2" MIN. DEPTH) (PALOMINO GOLD)
2	(Pattern)	DECOMPOSED GRANITE (STABILIZED) (TRAIL MEDIANS) (1 1/2" MINUS) (2" MIN. DEPTH) (PALOMINO GOLD)
3	(Pattern)	DECOMPOSED GRANITE (STABILIZED) (TRAIL MEDIANS) (1 1/2" MINUS) (2" MIN. DEPTH) (PALOMINO GOLD)
4	(Pattern)	DECOMPOSED GRANITE (STABILIZED) (TRAIL MEDIANS) (1 1/2" MINUS) (2" MIN. DEPTH) (PALOMINO GOLD)
5	(Pattern)	DECOMPOSED GRANITE (STABILIZED) (TRAIL MEDIANS) (1 1/2" MINUS) (2" MIN. DEPTH) (PALOMINO GOLD)





Engineering and environmental design
 12345 Main Street, Suite 100
 Phoenix, Arizona 85001
 www.firm.com

LANDSCAPE LEGEND

SYM	BOTANICAL NAME	COMMON NAME
(S)	CELIS OCCIDENTALIS	HACKBERRY
(C)	CERCIDIMUM SPECIOS	SCOTT'S PALM VERDE
(T)	OLIVEA TESOTA	IRONWOOD TREE
(P)	PROSOPIS VELUTINA	ARIZONA MESQUITE
(M)	ZAPHRA OBUSIFLORA	GRAY THORN
(G)	CARNEGIEA GIGANTEA	SAGUARO
(F)	FEROCACTUS WISLIZENI	IRONWOOD TREE
(O)	OLIVEA TESOTA	IRONWOOD TREE
(S)	AMERHOSIA DELTOIDEA	BURSAGE
(T)	ANISACANTHUS THURBERI	DESERT HONEYBUCKLE
(P)	ARISTIDA PURPUREA	PURPLE THREEWAIN
(C)	CALLANDRA EROPHYLLA	PINK FAIRY DUSTER
(B)	ENCLEA FARINOSA	BRITTLEBUSH
(S)	HESPERALOE PARVIFLORA	BEAKLIGHTS
(S)	BRAMELIGHTS	HESPERALOE
(C)	JUSTICIA CALIFORNICA	CHUPAROSA
(S)	LARREA TRIDENTATA	CREOSOTE
(G)	GROUNDCOVERS:	
(S)	ABRONIA VILLOSA	SAND VERBENA
(M)	BAILEYA MULTIRADIATA	DESERT MARIGOLD
(P)	PENSTEMON PARRYI	PARRY'S PENSTEMON
(S)	ACENTIS CACTUS	'BLUE ELF' ALICE
(S)	ALOPE 'BLUE ELF'	'BLUE ELF' ALICE
(S)	CARNEGIEA GIGANTEA	SAGUARO
(S)	DASYLIRION WHEELERI	DESERT SPOON
(S)	ECHINOCEBUS ENGLEMANNI	HEDGEHOG CACTUS
(S)	FEROCACTUS WISLIZENI	FISHHOOK BARREL CACTUS
(S)	FOUQUEIRA SPLENDENS	COOTILLO
(S)	MULLEBERGIA CAPILLARIS	REGALIST
(S)	OPUNTIA VERSICOLOR	STAGHORN CHolla
(S)	OPUNTIA LEPTOCAULIS	DESERT CHRISTMAS CHolla
(S)	OPUNTIA ENGELMANNII	ENGELMANN'S PRICKLY PEAR
(S)	YUCCA BACCATA	BANANA YUCCA

LANDSCAPE LEGEND

SYM	BOTANICAL NAME	COMMON NAME
(S)	CELIS OCCIDENTALIS	HACKBERRY
(C)	CERCIDIMUM SPECIOS	SCOTT'S PALM VERDE
(T)	OLIVEA TESOTA	IRONWOOD TREE
(P)	PROSOPIS VELUTINA	ARIZONA MESQUITE
(M)	ZAPHRA OBUSIFLORA	GRAY THORN
(G)	CARNEGIEA GIGANTEA	SAGUARO
(F)	FEROCACTUS WISLIZENI	IRONWOOD TREE
(O)	OLIVEA TESOTA	IRONWOOD TREE
(S)	AMERHOSIA DELTOIDEA	BURSAGE
(T)	ANISACANTHUS THURBERI	DESERT HONEYBUCKLE
(P)	ARISTIDA PURPUREA	PURPLE THREEWAIN
(C)	CALLANDRA EROPHYLLA	PINK FAIRY DUSTER
(B)	ENCLEA FARINOSA	BRITTLEBUSH
(S)	HESPERALOE PARVIFLORA	BEAKLIGHTS
(S)	BRAMELIGHTS	HESPERALOE
(C)	JUSTICIA CALIFORNICA	CHUPAROSA
(S)	LARREA TRIDENTATA	CREOSOTE
(G)	GROUNDCOVERS:	
(S)	ABRONIA VILLOSA	SAND VERBENA
(M)	BAILEYA MULTIRADIATA	DESERT MARIGOLD
(P)	PENSTEMON PARRYI	PARRY'S PENSTEMON
(S)	ACENTIS CACTUS	'BLUE ELF' ALICE
(S)	ALOPE 'BLUE ELF'	'BLUE ELF' ALICE
(S)	CARNEGIEA GIGANTEA	SAGUARO
(S)	DASYLIRION WHEELERI	DESERT SPOON
(S)	ECHINOCEBUS ENGLEMANNI	HEDGEHOG CACTUS
(S)	FEROCACTUS WISLIZENI	FISHHOOK BARREL CACTUS
(S)	FOUQUEIRA SPLENDENS	COOTILLO
(S)	MULLEBERGIA CAPILLARIS	REGALIST
(S)	OPUNTIA VERSICOLOR	STAGHORN CHolla
(S)	OPUNTIA LEPTOCAULIS	DESERT CHRISTMAS CHolla
(S)	OPUNTIA ENGELMANNII	ENGELMANN'S PRICKLY PEAR
(S)	YUCCA BACCATA	BANANA YUCCA

LANDSCAPE LEGEND

SYM	BOTANICAL NAME	COMMON NAME
(S)	CELIS OCCIDENTALIS	HACKBERRY
(C)	CERCIDIMUM SPECIOS	SCOTT'S PALM VERDE
(T)	OLIVEA TESOTA	IRONWOOD TREE
(P)	PROSOPIS VELUTINA	ARIZONA MESQUITE
(M)	ZAPHRA OBUSIFLORA	GRAY THORN
(G)	CARNEGIEA GIGANTEA	SAGUARO
(F)	FEROCACTUS WISLIZENI	IRONWOOD TREE
(O)	OLIVEA TESOTA	IRONWOOD TREE
(S)	AMERHOSIA DELTOIDEA	BURSAGE
(T)	ANISACANTHUS THURBERI	DESERT HONEYBUCKLE
(P)	ARISTIDA PURPUREA	PURPLE THREEWAIN
(C)	CALLANDRA EROPHYLLA	PINK FAIRY DUSTER
(B)	ENCLEA FARINOSA	BRITTLEBUSH
(S)	HESPERALOE PARVIFLORA	BEAKLIGHTS
(S)	BRAMELIGHTS	HESPERALOE
(C)	JUSTICIA CALIFORNICA	CHUPAROSA
(S)	LARREA TRIDENTATA	CREOSOTE
(G)	GROUNDCOVERS:	
(S)	ABRONIA VILLOSA	SAND VERBENA
(M)	BAILEYA MULTIRADIATA	DESERT MARIGOLD
(P)	PENSTEMON PARRYI	PARRY'S PENSTEMON
(S)	ACENTIS CACTUS	'BLUE ELF' ALICE
(S)	ALOPE 'BLUE ELF'	'BLUE ELF' ALICE
(S)	CARNEGIEA GIGANTEA	SAGUARO
(S)	DASYLIRION WHEELERI	DESERT SPOON
(S)	ECHINOCEBUS ENGLEMANNI	HEDGEHOG CACTUS
(S)	FEROCACTUS WISLIZENI	FISHHOOK BARREL CACTUS
(S)	FOUQUEIRA SPLENDENS	COOTILLO
(S)	MULLEBERGIA CAPILLARIS	REGALIST
(S)	OPUNTIA VERSICOLOR	STAGHORN CHolla
(S)	OPUNTIA LEPTOCAULIS	DESERT CHRISTMAS CHolla
(S)	OPUNTIA ENGELMANNII	ENGELMANN'S PRICKLY PEAR
(S)	YUCCA BACCATA	BANANA YUCCA

LANDSCAPE LEGEND

SYM	BOTANICAL NAME	COMMON NAME
(S)	CELIS OCCIDENTALIS	HACKBERRY
(C)	CERCIDIMUM SPECIOS	SCOTT'S PALM VERDE
(T)	OLIVEA TESOTA	IRONWOOD TREE
(P)	PROSOPIS VELUTINA	ARIZONA MESQUITE
(M)	ZAPHRA OBUSIFLORA	GRAY THORN
(G)	CARNEGIEA GIGANTEA	SAGUARO
(F)	FEROCACTUS WISLIZENI	IRONWOOD TREE
(O)	OLIVEA TESOTA	IRONWOOD TREE
(S)	AMERHOSIA DELTOIDEA	BURSAGE
(T)	ANISACANTHUS THURBERI	DESERT HONEYBUCKLE
(P)	ARISTIDA PURPUREA	PURPLE THREEWAIN
(C)	CALLANDRA EROPHYLLA	PINK FAIRY DUSTER
(B)	ENCLEA FARINOSA	BRITTLEBUSH
(S)	HESPERALOE PARVIFLORA	BEAKLIGHTS
(S)	BRAMELIGHTS	HESPERALOE
(C)	JUSTICIA CALIFORNICA	CHUPAROSA
(S)	LARREA TRIDENTATA	CREOSOTE
(G)	GROUNDCOVERS:	
(S)	ABRONIA VILLOSA	SAND VERBENA
(M)	BAILEYA MULTIRADIATA	DESERT MARIGOLD
(P)	PENSTEMON PARRYI	PARRY'S PENSTEMON
(S)	ACENTIS CACTUS	'BLUE ELF' ALICE
(S)	ALOPE 'BLUE ELF'	'BLUE ELF' ALICE
(S)	CARNEGIEA GIGANTEA	SAGUARO
(S)	DASYLIRION WHEELERI	DESERT SPOON
(S)	ECHINOCEBUS ENGLEMANNI	HEDGEHOG CACTUS
(S)	FEROCACTUS WISLIZENI	FISHHOOK BARREL CACTUS
(S)	FOUQUEIRA SPLENDENS	COOTILLO
(S)	MULLEBERGIA CAPILLARIS	REGALIST
(S)	OPUNTIA VERSICOLOR	STAGHORN CHolla
(S)	OPUNTIA LEPTOCAULIS	DESERT CHRISTMAS CHolla
(S)	OPUNTIA ENGELMANNII	ENGELMANN'S PRICKLY PEAR
(S)	YUCCA BACCATA	BANANA YUCCA

LANDSCAPE LEGEND

KEY	DESCRIPTION
(1)	DECOMPOSED GRANITE (S) (TABILIZED) (TRAIL) (1 1/4" MIN. S) (2" LFTS) (4" MIN. DEPTH) (PALOMINO GOLD)
(2)	DECOMPOSED GRANITE (S) (TABILIZED) (TRAIL) (1 1/4" MIN. S) (2" LFTS) (4" MIN. DEPTH) (PALOMINO GOLD)
(3)	DESERT PAVEMENT (S) (SCREENED BLEND) (1 1/4" MIN. S) (2" LFTS) (4" MIN. DEPTH) (PALOMINO GOLD)
(4)	DESERT PAVEMENT (S) (SCREENED BLEND) (1 1/4" MIN. S) (2" LFTS) (4" MIN. DEPTH) (PALOMINO GOLD)
(5)	DESERT PAVEMENT (S) (SCREENED BLEND) (1 1/4" MIN. S) (2" LFTS) (4" MIN. DEPTH) (PALOMINO GOLD)

LANDSCAPE LEGEND

KEY	DESCRIPTION
(6)	EXPOSED AGGREGATE CONCRETE PAVEMENT (3/8" SCREENED) (4" MIN. DEPTH) (INTEGRAL COLOR: SAN DIEGO BUFF)
(7)	DECOMPOSED GRANITE (S) (TABILIZED) (TRAIL) (1 1/4" MIN. S) (2" LFTS) (4" MIN. DEPTH) (PALOMINO GOLD)
(8)	DESERT PAVEMENT (S) (SCREENED BLEND) (1 1/4" MIN. S) (2" LFTS) (4" MIN. DEPTH) (PALOMINO GOLD)
(9)	DESERT PAVEMENT (S) (SCREENED BLEND) (1 1/4" MIN. S) (2" LFTS) (4" MIN. DEPTH) (PALOMINO GOLD)
(10)	DESERT PAVEMENT (S) (SCREENED BLEND) (1 1/4" MIN. S) (2" LFTS) (4" MIN. DEPTH) (PALOMINO GOLD)
(11)	DESERT PAVEMENT (S) (SCREENED BLEND) (1 1/4" MIN. S) (2" LFTS) (4" MIN. DEPTH) (PALOMINO GOLD)
(12)	DESERT PAVEMENT (S) (SCREENED BLEND) (1 1/4" MIN. S) (2" LFTS) (4" MIN. DEPTH) (PALOMINO GOLD)

GENERAL NOTES:
 1. SEE H01 FOR HARDSCAPE SCHEDULE WITH INERT CONTRACTOR NOTES:
 2. CONTRACTOR SHALL FIELD STAKE LOCATIONS OF SURFACE MATERIAL LAYOUT AREAS AND OBTAIN CITY ENGINEER APPROVAL PRIOR TO CONSTRUCTION OF SAME.
 3. NEW AND MATCHING DECOMPOSE GRANITE "GRADATION AND COLOR" TO CITY ENGINEER FOR REVIEW AND APPROVAL. LANDSCAPE DESIGNATION AND NEW LANDSCAPE OR 4. 5-VI-SIGHT VISIBILITY TRIANGLES AND SOL-SIGHT DISTANCE LINES PER COS 038-PM STANDARDS.
 5. ALL SPOT ELEVATIONS WITHIN METERS BUFFERS (FOO) HEIGHT TO PROTECT IN PLACE EXISTING ALL SIGNAGE, TRAFFIC SIGNAL EQUIPMENT, FIBER OPTIC CONDUIT AND EQUIPMENT.

APN 216-68-0198
 KAREN GREEN FAMILY LIMITED PARTNERSHIP
 INST. #1989-072781, MCR
 ROW DEFINED BY N0207 PARCEL MAP

APN 216-68-0734
 TANG IRREVOCABLE TRUST FBO CAROL TANG
 INST. #2021-1275395, MCR

APN 216-68-0198
 KAREN GREEN FAMILY LIMITED PARTNERSHIP
 INST. #1989-072781, MCR
 ROW DEFINED BY N0207 PARCEL MAP

APN 216-68-0734
 TANG IRREVOCABLE TRUST FBO CAROL TANG
 INST. #2021-1275395, MCR

APN 216-68-0198
 KAREN GREEN FAMILY LIMITED PARTNERSHIP
 INST. #1989-072781, MCR
 ROW DEFINED BY N0207 PARCEL MAP

APN 216-68-0734
 TANG IRREVOCABLE TRUST FBO CAROL TANG
 INST. #2021-1275395, MCR

APN 216-68-0198
 KAREN GREEN FAMILY LIMITED PARTNERSHIP
 INST. #1989-072781, MCR
 ROW DEFINED BY N0207 PARCEL MAP

APN 216-68-0734
 TANG IRREVOCABLE TRUST FBO CAROL TANG
 INST. #2021-1275395, MCR

APN 216-68-0198
 KAREN GREEN FAMILY LIMITED PARTNERSHIP
 INST. #1989-072781, MCR
 ROW DEFINED BY N0207 PARCEL MAP

APN 216-68-0734
 TANG IRREVOCABLE TRUST FBO CAROL TANG
 INST. #2021-1275395, MCR

APN 216-68-0198
 KAREN GREEN FAMILY LIMITED PARTNERSHIP
 INST. #1989-072781, MCR
 ROW DEFINED BY N0207 PARCEL MAP

APN 216-68-0734
 TANG IRREVOCABLE TRUST FBO CAROL TANG
 INST. #2021-1275395, MCR

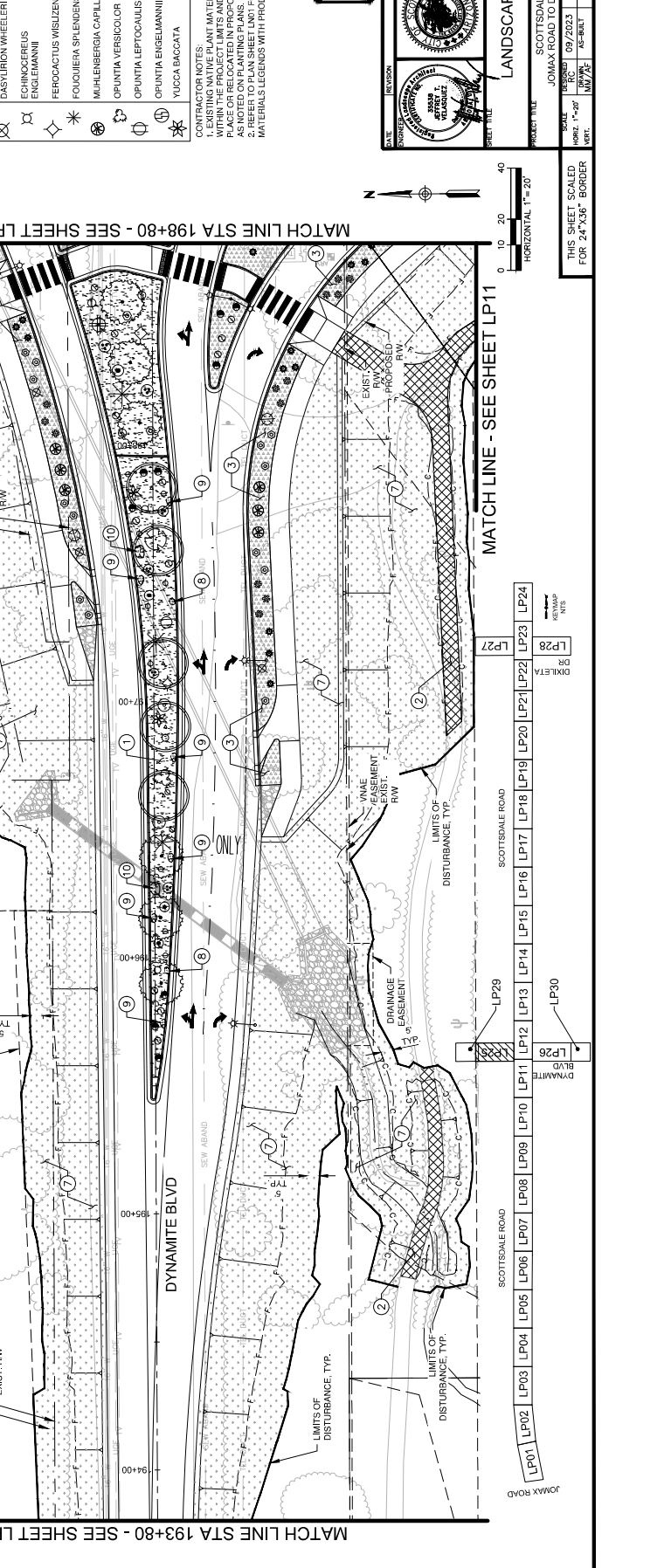
APN 216-68-0198
 KAREN GREEN FAMILY LIMITED PARTNERSHIP
 INST. #1989-072781, MCR
 ROW DEFINED BY N0207 PARCEL MAP

APN 216-68-0734
 TANG IRREVOCABLE TRUST FBO CAROL TANG
 INST. #2021-1275395, MCR

APN 216-68-0198
 KAREN GREEN FAMILY LIMITED PARTNERSHIP
 INST. #1989-072781, MCR
 ROW DEFINED BY N0207 PARCEL MAP

APN 216-68-0734
 TANG IRREVOCABLE TRUST FBO CAROL TANG
 INST. #2021-1275395, MCR

APN 216-68-0198
 KAREN GREEN FAMILY LIMITED PARTNERSHIP
 INST. #1989-072781, MCR
 ROW DEFINED BY N0207 PARCEL MAP

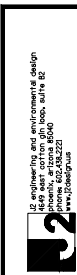


LANDSCAPE PLAN
 PUBLIC WORKS
 CAPITAL PROJECT
 MANAGEMENT
 7447 E. IRIDIAN, SUITE 100
 SCOTTSDALE, ARIZONA 85268

DATE: 09/20/2023
 TIME: 1:28 PM
 BY: [Signature]
 CHECKED BY: [Signature]
 PROJECT NO.: 2023-0008
 SHEET NO.: 2023-0008

SCOTTSDALE ROAD
 JOHANN ROAD TO DIXIELTA DRIVE

THIS SHEET SCALED FOR 24"x36" BORDER



LANDSCAPE LEGEND

SYM	BOTANICAL NAME	COMMON NAME
TREES AND CACT:		
⊕	CELTIS OCCIDENTALIS	HACKBERRY
⊕	CERCIDIUM SPECIES	FOOTBALLS PALO VERDE BLUE PALO VERDE
⊕	OLIVEA TESOTA	IRONWOOD TREE
⊕	PROSORPIS VELOUTIA	ARIZONA MESQUITE
⊕	ZIZIPHUS OBLUSIFLORA	GRAYTHORN
⊕	CARNEGIEA GIGANTEA FOCQUEA SPP. VAR. SAGUARO BARREL	SAGUARO SAGUARO BARREL
⊕	CERCIDIUM SPECIES	FOOTBALLS PALO VERDE BLUE PALO VERDE
⊕	CARNEGIEA GIGANTEA FOCQUEA SPP. VAR. SAGUARO BARREL	SAGUARO SAGUARO BARREL
⊕	CERCIDIUM SPECIES	IRONWOOD TREE COOTILLO

SYM	BOTANICAL NAME	COMMON NAME
NEW PLANT LEGEND		
⊕	CHIPSURIS LINEARIS LUCRETIA HAMILTON	DESERT WILLOW
⊕	OLIVEA TESOTA	IRONWOOD
⊕	PARINSONIA MICROPHYLLUM	FOOTHILLS PALO VERDE
⊕	AMBROSIA DELTOIDEA	BURSAGE
⊕	ANISACANTHUS THURBERI	DESERT HONEYBUCKLE
⊕	ARISTIDA PURPUREA	PURPLE THREEAWN
⊕	CALLIANDRA EROPHYLLA	PINK FAIRY DUSTER
⊕	ENCLEA FARINOSA	BRATTLEBUSH
⊕	HESPERALOE PARVIFLORA 'BRACKELIGHTS'	BRACKELIGHTS HESPERALOE
⊕	JUSTICIA CALIFORNICA	CHUPAROSA
⊕	LARREA TRIDENTATA	CREOSOTE
GROUNDCOVERERS:		
⊕	ABRONIA VILLOSA	SAND VERBENA
⊕	BAILEYA MULTIRADIATA	DESERT MARIGOLD
⊕	PENSTEMON PARRYI	PARRY'S PENSTEMON
ACCENTS/CACTUS:		
⊕	ALOË 'BLUE ELF'	'BLUE ELF' ALOË
⊕	CARNEGIEA GIGANTEA	SAGUARO
⊕	DASYLIRION WHEELERI	DESERT SPOON
⊕	ECHINOGERIUS	HEDGEHOG CACTUS
⊕	ENGELMANNII	FINCHHOOK BARREL CACTUS
⊕	FEROCACTUS WISLIZENI	
⊕	FOUQUIERA SPLENDENS	COCOTILLO
⊕	MUHLENBERGIA CAPILLARIS	REGAL MIST
⊕	OPUNTIA VERSICOLOR	STAGHORN CHOLLA
⊕	OPUNTIA LEPTOCALCULUS	DESERT CHRISTMAS CHOLLA
⊕	OPUNTIA ENGELMANNII	ENGELMANN'S PRICKLEY PEAR
⊕	YUCCA BACCATA	BANANA YUCCA

GENERAL NOTES:

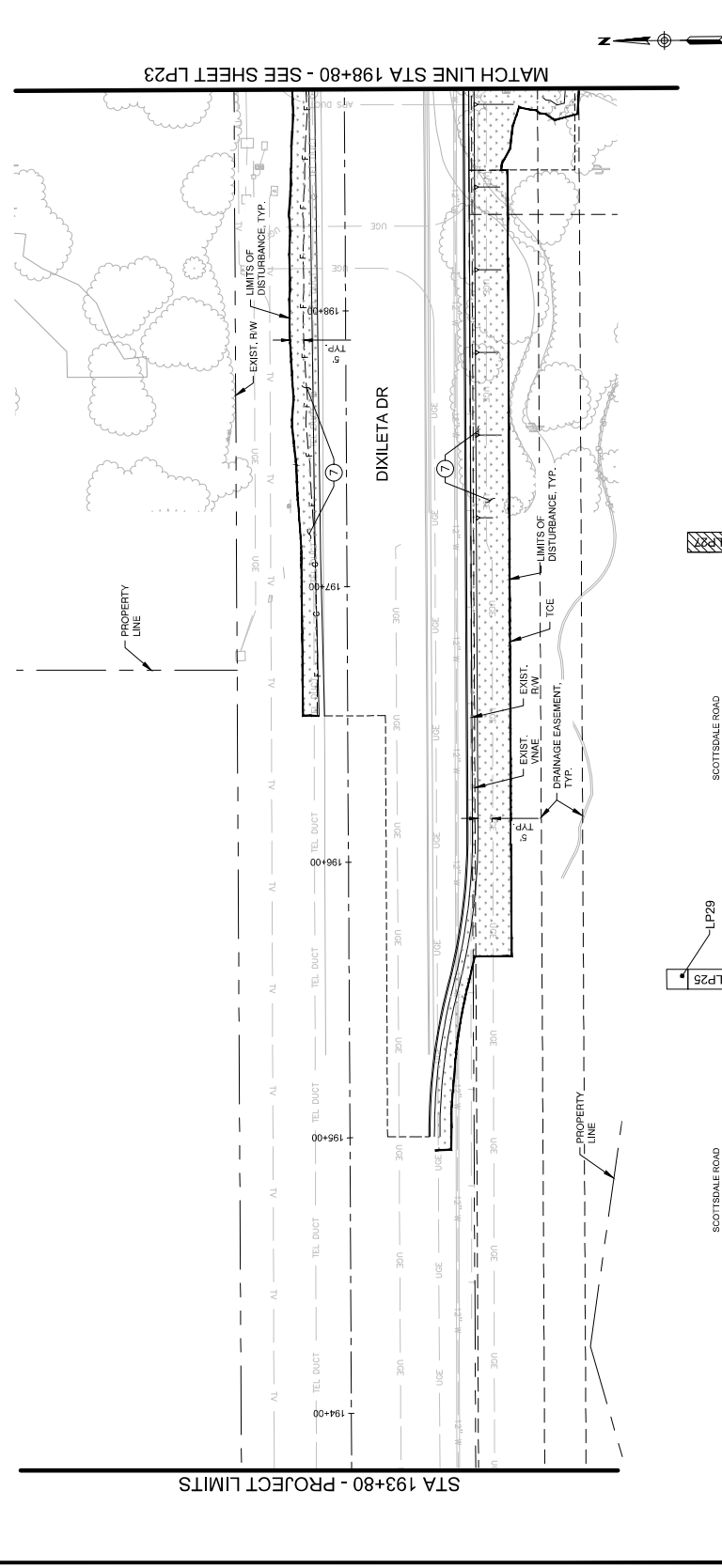
- SEE #101 FOR HARDSCAPE SCHEDULE WITH INERT
- CONTRACTOR SHALL FIELD STAKE LOCATIONS OF SURFACE MATERIAL LAYOUT AREAS AND OBTAIN CITY ENGINEER APPROVAL PRIOR TO CONSTRUCTION OF SAME. ALL APPROVALS SHALL BE OBTAINED FROM THE CITY OF AURORA.
- NEW AND MATCHING DECOMPOSED GRANITE 'GRADATION AND COLOR' TO CITY ENGINEER FOR REVIEW AND APPROVAL. LANDSCAPE DESIGN SHALL MATCH EXISTING LANDSCAPE OR COLOR TO CITY ENGINEER FOR REVIEW AND APPROVAL.
- 5/4" SIGHT VISIBILITY TRIANGLES AND SOL-SIGHT DISTANCE LINES PER COS 308-PM STANDARDS.
- ALL SPOT ELEVATIONS WITHIN METEAS BUFFERS ARE REFERENCED TO THE CONTAINMENT TOP OF CURB (TOC) HEIGHT. TO PROTECT IN PLACE EXISTING ALL SIGNAGE, TRAFFIC SIGNAL EQUIPMENT, FIBER OPTIC CONDUIT AND EQUIPMENT.

KEY	DESCRIPTION
1	EXPOSED AGGREGATE CONCRETE PAVEMENT (0.8" SCREENED) (4" MIN. DEPTH) (INTEGRAL COLOR: SAN DIEGO BUFF)
2	DECOMPOSED GRANITE RESTORATION ALLOWANCE (COS & PRIVATE PROPERTY) (COS 2020) (MATCHING GRADATION & COLOR)
3	PIT RUN BOULDER: 800 LBS - 2'x2'x2'
4	PIT RUN BOULDER: 6-400 LBS - 4'x4'x4' (SANDWICH MEANS)
5	ROCK CHECK DAM

KEY	DESCRIPTION
1	DECOMPOSED GRANITE (COS 2020) (RAISED MEDIANS) (1/4" MINUS) (12" MIN. DEPTH) (PALOMINO GOLD)
2	DECOMPOSED GRANITE (STABILIZED) (TRAIL) (PALOMINO GOLD)
3	DESERT PAVEMENT (5" SCREENED BLEND: RBP RAP 14" TO 6" SCREENED BLEND: 40% 4" ANGULAR RAP RAP - 60% 5"-8" ANGULAR RIP (COS 1) (ANGULAR 5-8") (3" DEPTH) (PALOMINO GOLD)
4	RBP RAP 8" TO 12" SCREENED BLEND: 40% 12" ANGULAR RAP RAP - 60% 8" ANGULAR RIP (ANGULAR 4-8") (12" MIN. DEPTH) (ROUNDABOUT INFIELD BUFFER)

CONTRACTOR NOTES:

- SEE #101 FOR HARDSCAPE SCHEDULE WITH INERT
- CONTRACTOR SHALL FIELD STAKE LOCATIONS OF SURFACE MATERIAL LAYOUT AREAS AND OBTAIN CITY ENGINEER APPROVAL PRIOR TO CONSTRUCTION OF SAME. ALL APPROVALS SHALL BE OBTAINED FROM THE CITY OF AURORA.
- NEW AND MATCHING DECOMPOSED GRANITE 'GRADATION AND COLOR' TO CITY ENGINEER FOR REVIEW AND APPROVAL. LANDSCAPE DESIGN SHALL MATCH EXISTING LANDSCAPE OR COLOR TO CITY ENGINEER FOR REVIEW AND APPROVAL.
- 5/4" SIGHT VISIBILITY TRIANGLES AND SOL-SIGHT DISTANCE LINES PER COS 308-PM STANDARDS.
- ALL SPOT ELEVATIONS WITHIN METEAS BUFFERS ARE REFERENCED TO THE CONTAINMENT TOP OF CURB (TOC) HEIGHT. TO PROTECT IN PLACE EXISTING ALL SIGNAGE, TRAFFIC SIGNAL EQUIPMENT, FIBER OPTIC CONDUIT AND EQUIPMENT.



LANDSCAPE LEGEND

GENERAL NOTES:

- EXISTING NATIVE PLANT MATERIAL SHALL BE INVENTORIED WITHIN THE PROJECT LIMITS AND BE EITHER PROTECTED IN PLACE OR RELOCATED IN PROPOSED LANDSCAPE AREAS.
- REFER TO PLAN SHEET LANT FOR PLANTING AND INERT MATERIALS LEGENDS WITH PRODUCT AND MFG INFORMATION.

PLANTING NOTES:

- EXISTING NATIVE PLANT MATERIAL SHALL BE INVENTORIED WITHIN THE PROJECT LIMITS AND BE EITHER PROTECTED IN PLACE OR RELOCATED IN PROPOSED LANDSCAPE AREAS.
- REFER TO PLAN SHEET LANT FOR PLANTING AND INERT MATERIALS LEGENDS WITH PRODUCT AND MFG INFORMATION.

ARIZONA

PUBLIC WORKS

CAPITAL PROJECT MANAGEMENT

7447 E. HINDALE, SUITE 200
SCOTTSDALE, ARIZONA 85251

LANDSCAPE PLAN

PROJECT FILE: SCOTTSDALE ROAD
JOB MAX ROAD TO DIXLETA DRIVE
DATE: 09/2023
SCALE: 1"=20'
SHEET NO.: LP28
REVISED BY: AS-BUILT
DATE: 09/2023
PROJECT NO.: 221-0F-206

THIS SHEET SCALED FOR 24"x36" BORDER

HARDSCAPE MATERIALS SCHEDULE

INERT SURFACE MATERIAL

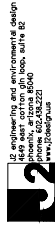
KEY NO.	PATTERN	DESCRIPTION	GRADATION	COLOR	SUPPLIER	QTY.	REMARKS	SHEET/DETAIL
1		DECOMPOSED GRANITE (CGS 2820) (RAISED MEDIANS) (1/4" MINUS) (2" MIN. DEPTH) (PALOMINO GOLD)	1/4" MINUS DECOMPOSED GRANITE (2" MIN. DEPTH)	PALOMINO GOLD OR APPROVED EQUAL	PIONEER LANDSCAPE CENTER OR APPROVED EQUAL	6,488 S.Y.	1/4" MINUS DECOMPOSED GRANITE. PRIOR TO CONSTRUCTION OPERATIONS, CONTRACTOR TO PROVIDE 0.5 GAL. SAMPLES FOR CITY APPROVAL.	SHEET HD01 DETAIL 2, 3, 4 & 6
2		DECOMPOSED GRANITE (STABILIZED) (TRAIL) (1/4" MINUS) (2x2" LIFT/1.5" 4" MIN. DEPTH) (PALOMINO GOLD)	1/4" MINUS STABILIZED DECOMPOSED GRANITE (2x2" LIFTS / 4" MIN. DEPTH)	PALOMINO GOLD OR APPROVED EQUAL	PIONEER LANDSCAPE CENTER OR APPROVED EQUAL	480 S.Y.	BECOMPOSED GRANITE (STABILIZED) (1/4" MINUS) (TRAIL) PRIOR TO CONSTRUCTION OPERATIONS, CONTRACTOR TO PROVIDE 0.5 GAL. SAMPLES FOR CITY APPROVAL.	SHEET HD01, DETAIL 5
3		DESERT PAVEMENT (3" SCREENED BLEND- 40% 3" ANGULAR RIP RAP + 60% 1 1/2" MINUS) (PALOMINO GOLD)	3" SCREENED BLEND (40% 3" ANGULAR RIP RAP + 60% 1 1/2" MINUS)	PALOMINO GOLD OR APPROVED EQUAL	PIONEER LANDSCAPE CENTER OR APPROVED EQUAL	20,104 S.Y.	3" SCREENED BLEND- 40% 3" ANGULAR RIP RAP + 60% 1-1/2" MINUS) (7" MIN. DEPTH)- PRIOR TO CONSTRUCTION OPERATIONS, CONTRACTOR TO PROVIDE DESERT PAVEMENT SAMPLES FOR CITY APPROVAL.	SHEET LD02, DETAIL 1
4		RIEPP RAP (4" TO 6" SCREENED BLEND- 40% 4" ANGULAR RIP RAP + 60% 2" MINUS) (PALOMINO GOLD) (6" MIN. DEPTH)	RIEPP RAP (4" TO 6" SCREENED BLEND- 40% 4" ANGULAR RIP RAP + 60% 2" MINUS) (PALOMINO GOLD) (6" MIN. DEPTH)	PALOMINO GOLD OR APPROVED EQUAL	PIONEER LANDSCAPE CENTER OR APPROVED EQUAL	775 S.Y.	RIEPP RAP (4" TO 6" SCREENED BLEND- 40% 4" ANGULAR RIP RAP + 60% 2" MINUS) (PALOMINO GOLD) (6" MIN. DEPTH)- PRIOR TO CONSTRUCTION OPERATIONS, CONTRACTOR TO PROVIDE RIP RAP SAMPLES FOR CITY APPROVAL.	SHEET HD02, DETAIL 2
5		RIEPP RAP (8" TO 12" SCREENED BLEND- 40% 8" ANGULAR RIP RAP + 60% 4" ANGULAR RIP RAP) (PALOMINO GOLD) (8" MIN. DEPTH)	8" TO 12" SCREENED BLEND (40% 8" ANGULAR RIP RAP + 60% 4" ANGULAR RIP RAP) (PALOMINO GOLD) (8" MIN. DEPTH)	PALOMINO GOLD OR APPROVED EQUAL	PIONEER LANDSCAPE CENTER OR APPROVED EQUAL	348 S.Y.	8" TO 12" SCREENED BLEND- 40% 8" ANGULAR RIP RAP + 60% 4" ANGULAR RIP RAP (ANGULAR D-55) - PRIOR TO CONSTRUCTION OPERATIONS, CONTRACTOR TO PROVIDE RIP RAP SAMPLES FOR CITY APPROVAL.	SHEET HD02, DETAIL 2
6		EXPOSED AGGREGATE CONCRETE PAVEMENT (3/8" SCREENED) (4" MIN. DEPTH) (INTEGRAL COLOR: SAN DIEGO BUFF)	3/8" SCREENED EXPOSED AGGREGATE CONCRETE (4" MIN. DEPTH)	COLOR SAN DIEGO BUFF OR APPROVED EQUAL	GENERAL CONTRACTOR	7,896 S.F.	PROVIDE 10" X10" MOCK-UP SAMPLE FOR CITY APPROVAL	SHEET HD01, DETAIL 3
7		DECOMPOSED GRANITE RESTORATION ALLOWANCE (CGS & PRIVATE PROPERTY) (CGS 2820) (MATCHING GRADATION & COLOR) (1" MIN. DEPTH)	GRANITE: GRADATION AND COLOR VARIES	MATCH EXISTING COLOR	GENERAL CONTRACTOR	86,641 S.Y.	VARIABLE GRADATION AND COLOR: PROVIDE 3 GAL. SAMPLES FOR CITY APPROVAL	SHEET LD02, DETAIL 4

- GENERAL NOTES:**
1. S.V.T. SIGHT VISIBILITY TRIANGLES AND S.D.L. SIGHT DISTANCE LINES PER COS
 2. ELEVATIONS WITHIN MEDIANS BUFFERS ARE REFERENCED TO THE CONTAINMENT CURB HEIGHT, UNLESS OTHERWISE NOTED.
 3. SIGNAL EQUIPMENT, FIBER OPTIC CONDUIT AND EQUIPMENT.

HARDSCAPE NOTES:

1. FIELD STAKE LOCATIONS OF SURFACE MATERIAL LAYOUT AREAS AND OR AN CITY ENGINEER APPROVAL PRIOR TO CONSTRUCTION OPERATIONS.
2. CONTRACTOR SHALL PROVIDE 3 GALLON SAMPLES OF ALL NEW AND EXISTING MATERIALS TO THE CITY ENGINEER FOR REVIEW AND APPROVAL PRIOR TO COMMENCING ANY NEW LANDSCAPE OR LANDSCAPE RESTORATION WORK.

KEY NO.	SYMBOL	DESCRIPTION	QTY	SHEET/DETAIL
8		PIT RUN BOULDER: 800 LBS - 2'x2'x2' COLOR: PALOMINO GOLD OR APPROVED EQUAL	64 EA	SHEET HD02, DETAIL 3
9		PIT RUN BOULDER: 2,700 LBS - 3'x3'x3' COLOR: PALOMINO GOLD OR APPROVED EQUAL	72 EA	SHEET HD02, DETAIL 3
10		PIT RUN BOULDER: 8,400 LBS - 4'x4'x4' COLOR: PALOMINO GOLD OR APPROVED EQUAL	44 EA	SHEET HD02, DETAIL 3
11		6" CONCRETE HEADER (RAISED MEDIANS)	85 LF	SHEET HD01, DETAIL 4
12		CHECK DAMS & BISSWALLES (RAISED MEDIANS) LID DETAILS	24 EA	SHEET HD02, DETAIL 3



DATE: _____ BY: _____
 REVISION: _____
PUBLIC WORKS
 CAPITAL PROJECT
 MANAGEMENT
 7447 E. INDIAN SCHOOL RD.,
 SCOTTSDALE, ARIZONA 85251

HARDSCAPE AMENITY SCHEDULE
 PROJECT FILE: SCOTTSDALE ROAD
 JOHNSON ROAD TO DIXIELETA DRIVE
 SCALE: AS-BUILT
 DATE: 09/20/23
 SHEET NO.: 5503

THIS SHEET SCALED FOR 24"X36" BORDER