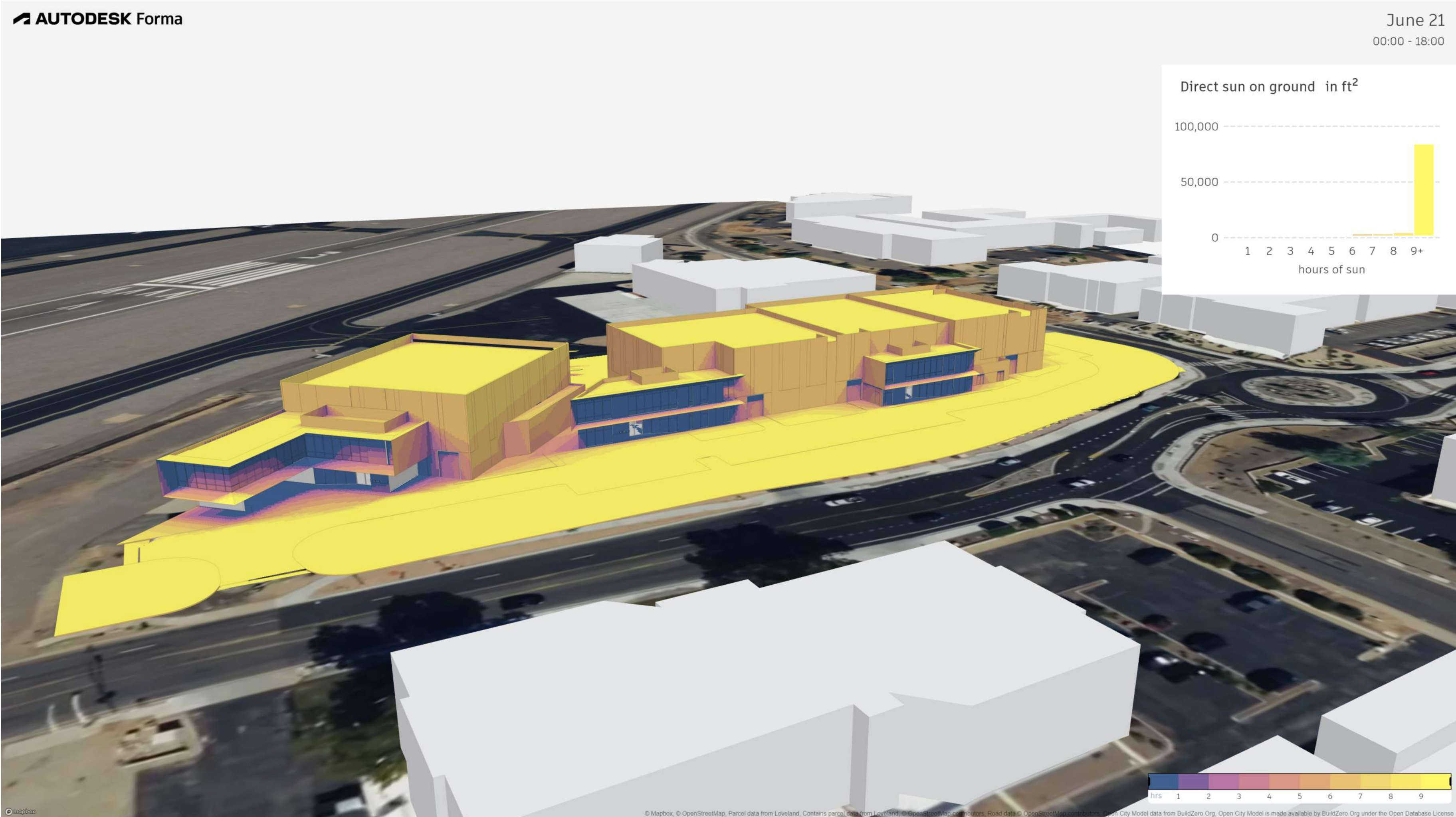
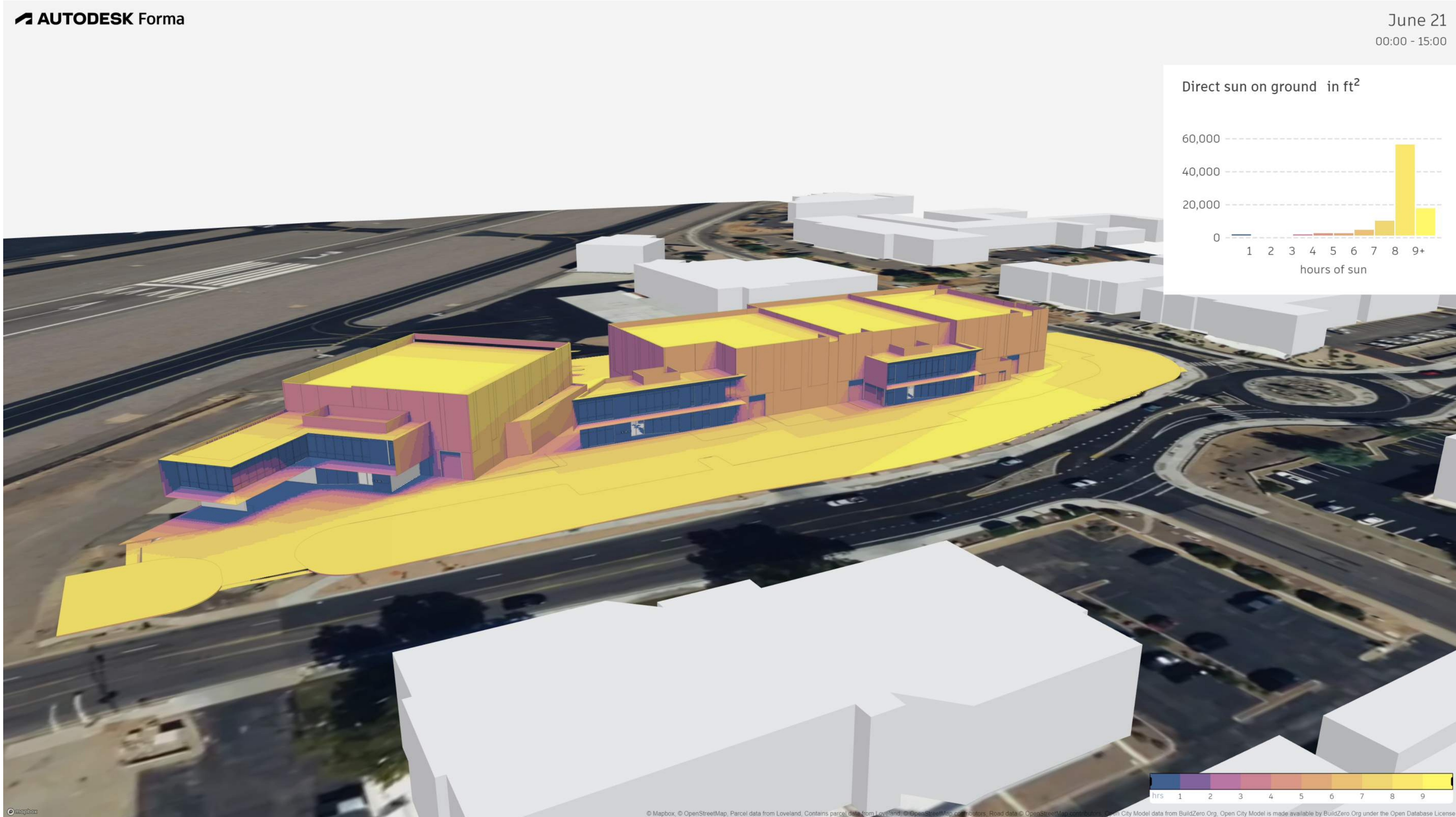
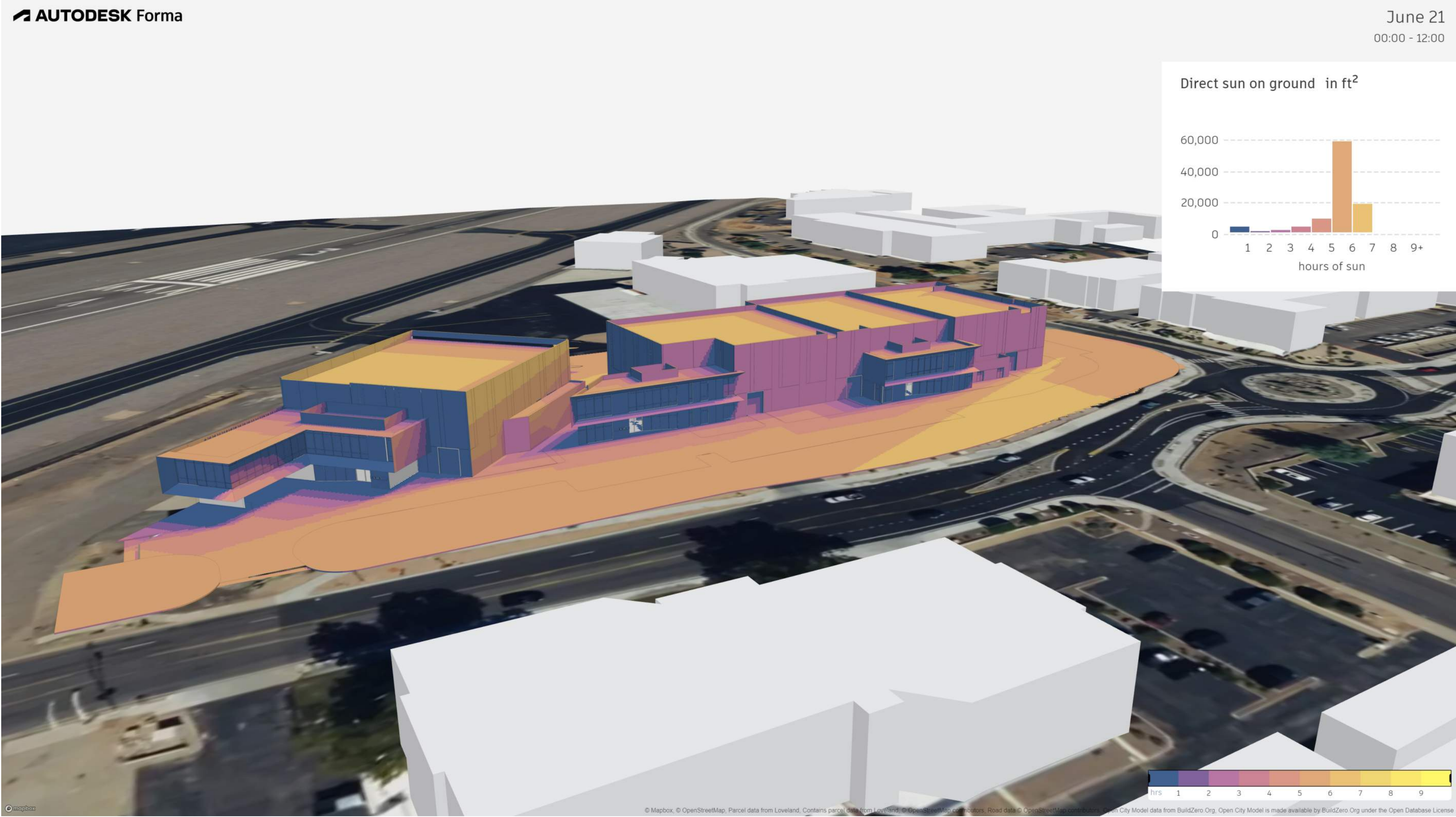
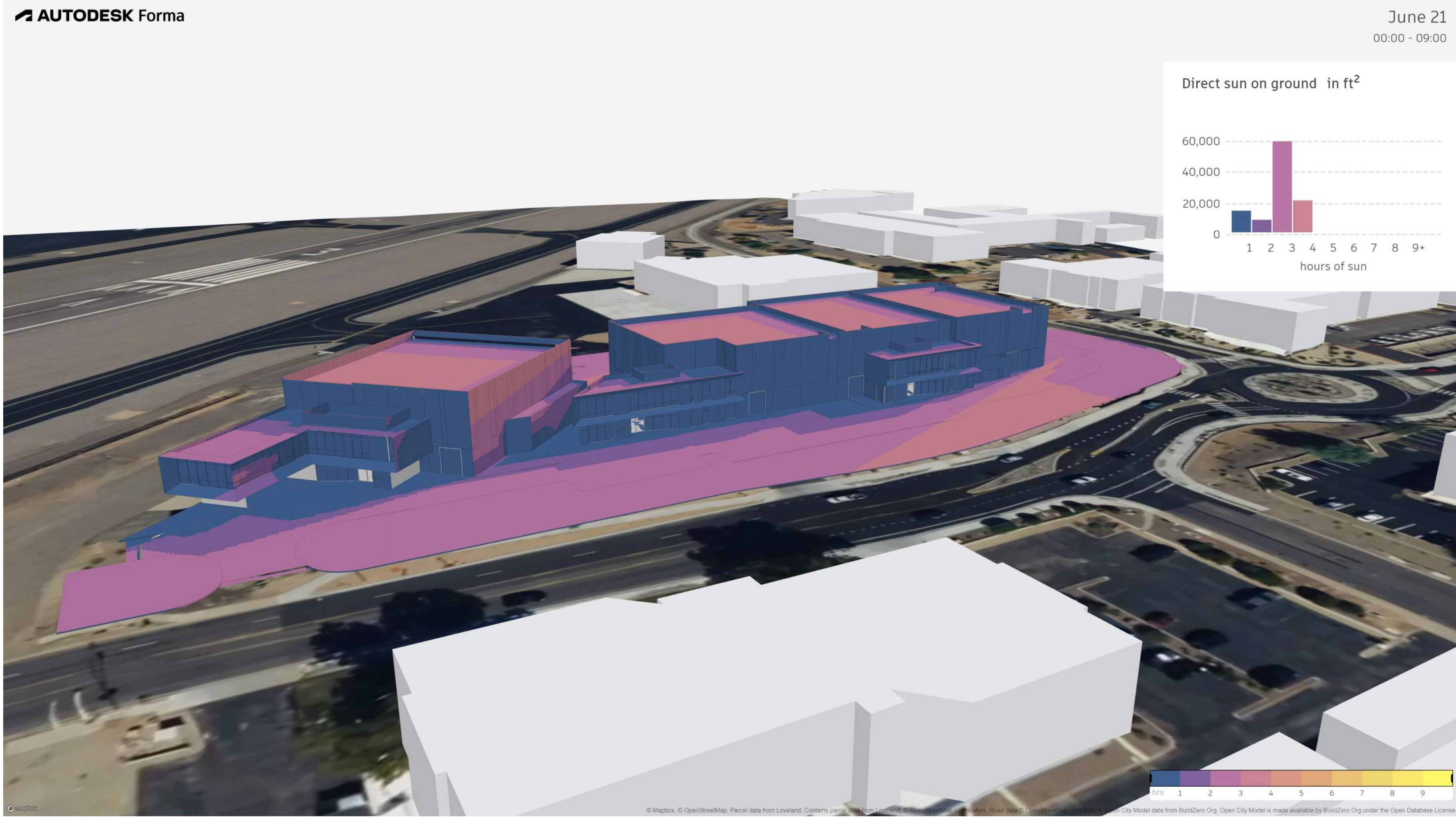
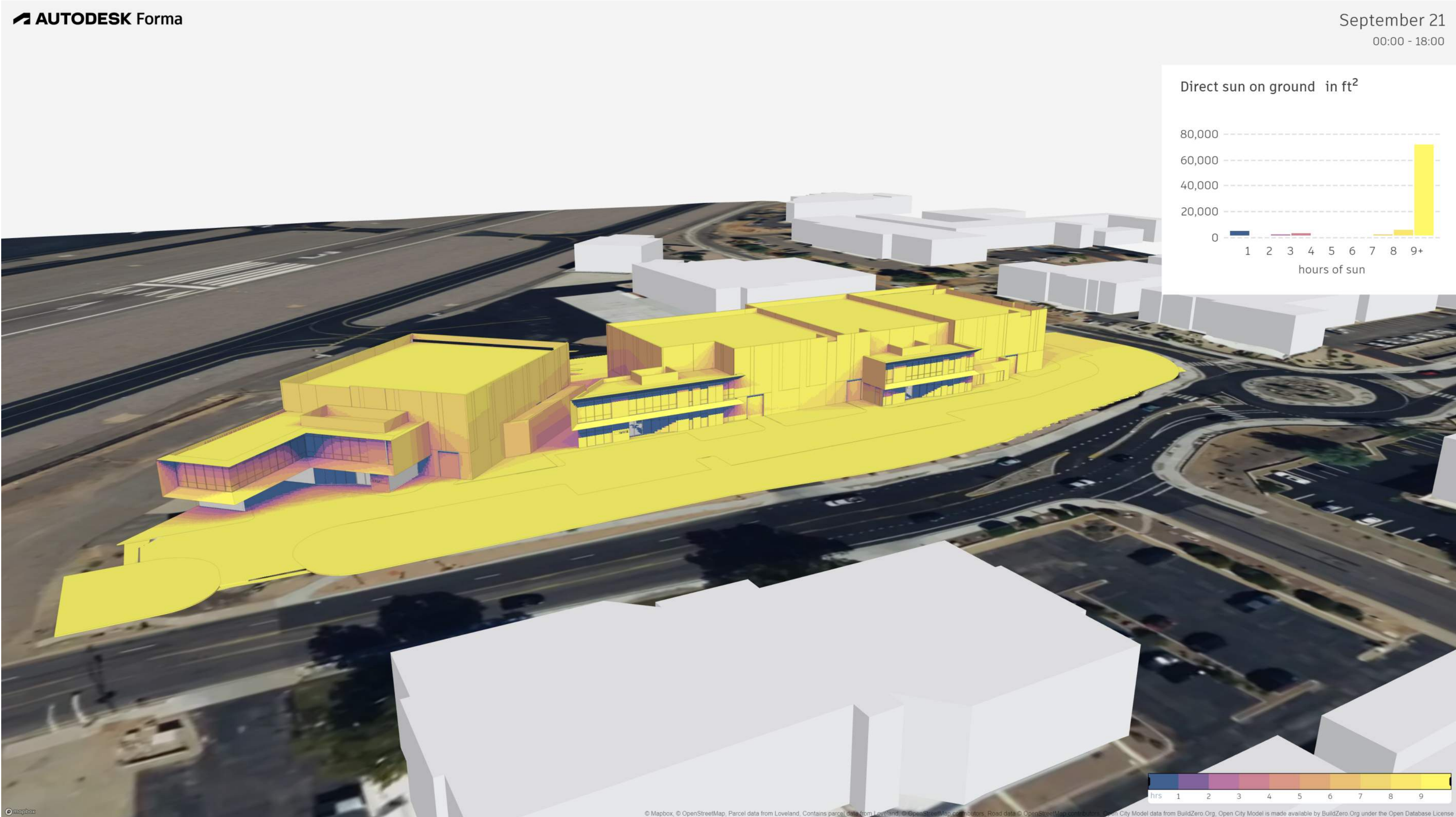
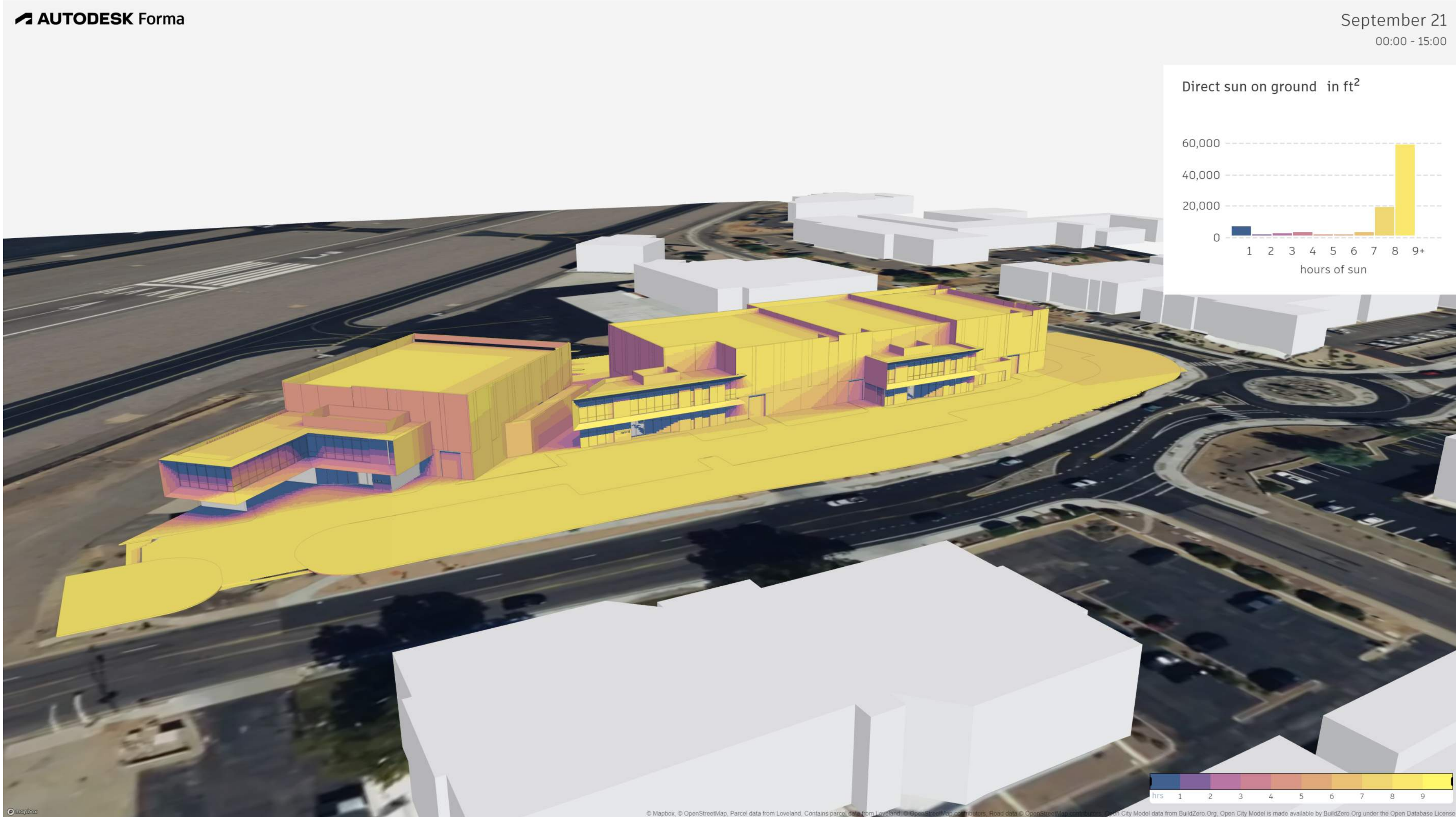
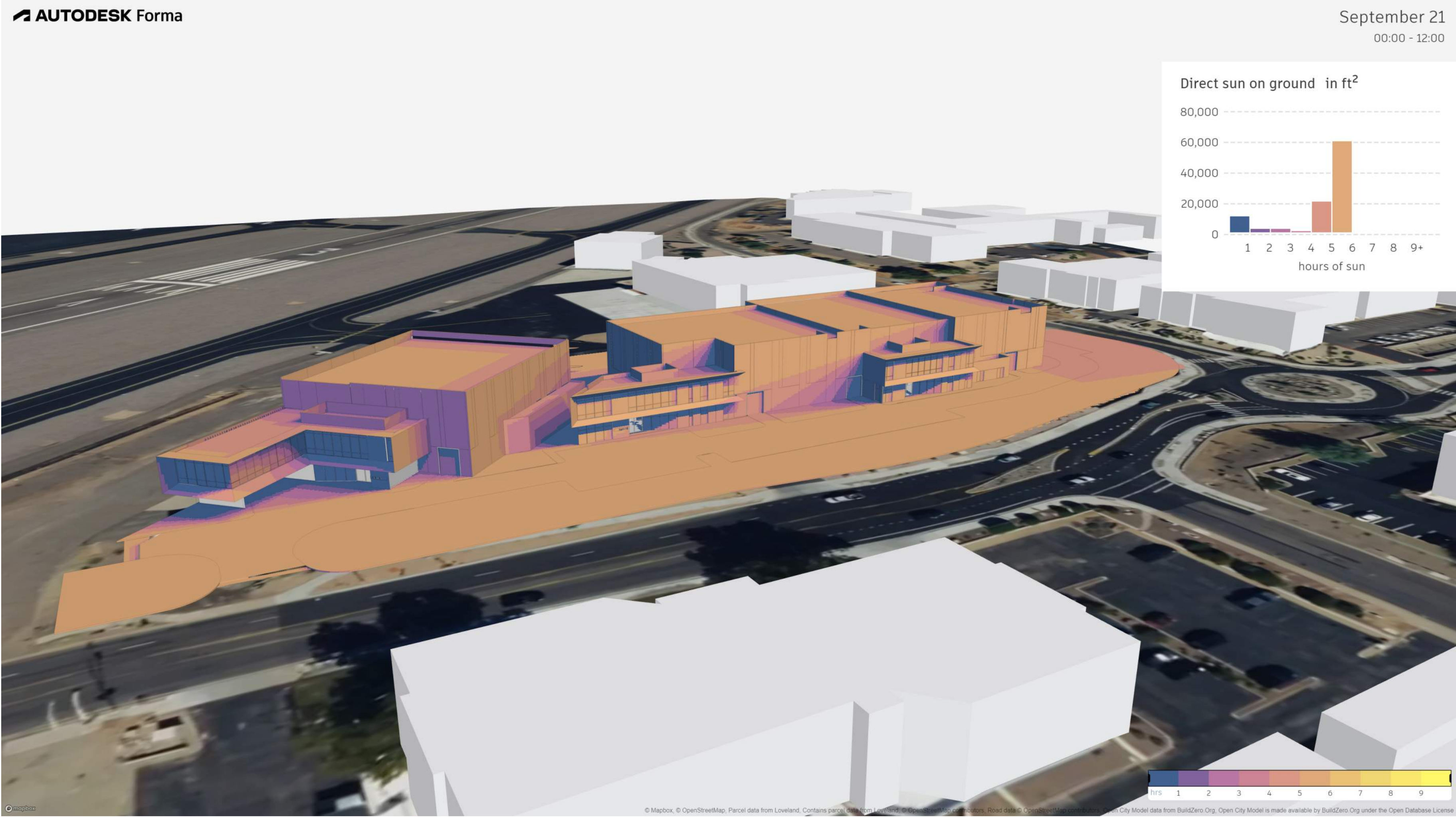


This conceptual design is based upon a preliminary review of entitlement requirements and on unverified and possibly incomplete site and/or building information, and is intended merely to assist in exploring how the project might be developed. Signage shown is for illustrative purposes only and does not necessarily reflect municipal code compliance. All colors shown are for representative purposes only. Refer to material samples for actual color verification.

MARCH 21ST - SUN HOUR ANALYSIS
 SKYPORT AT REDFIELD HANGARS
 SCOTTSDALE, ARIZONA - PHX24-0033-00

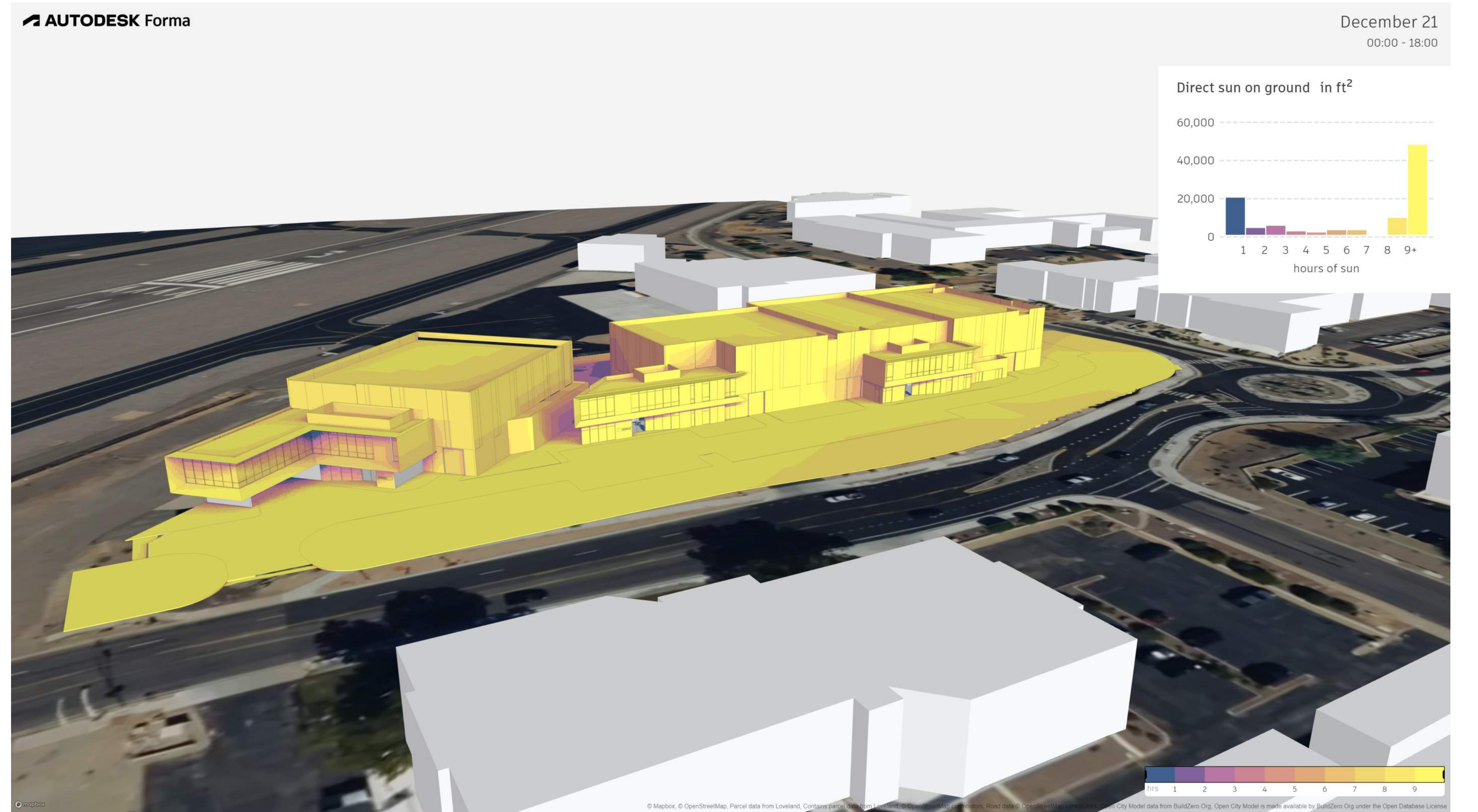
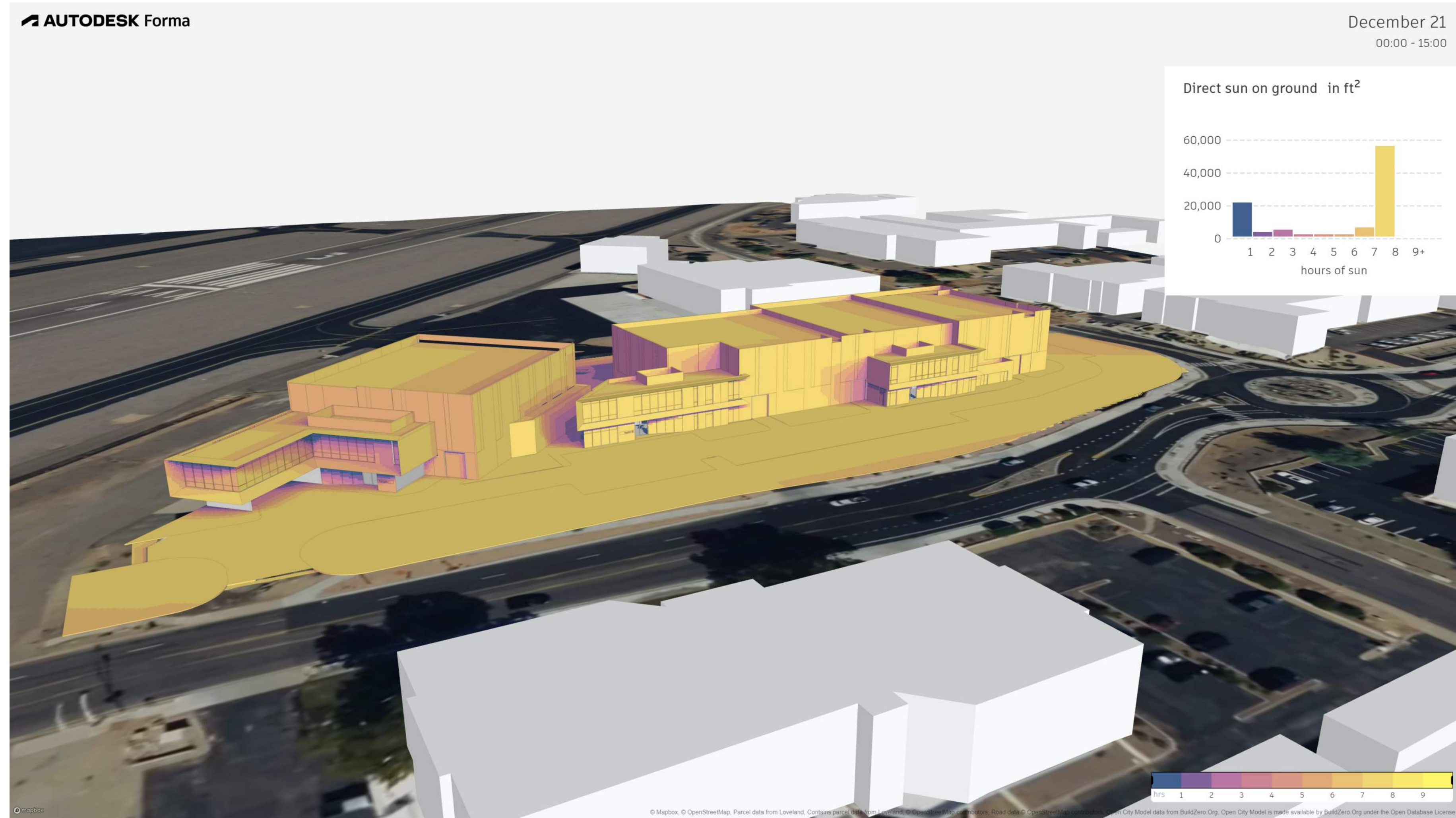
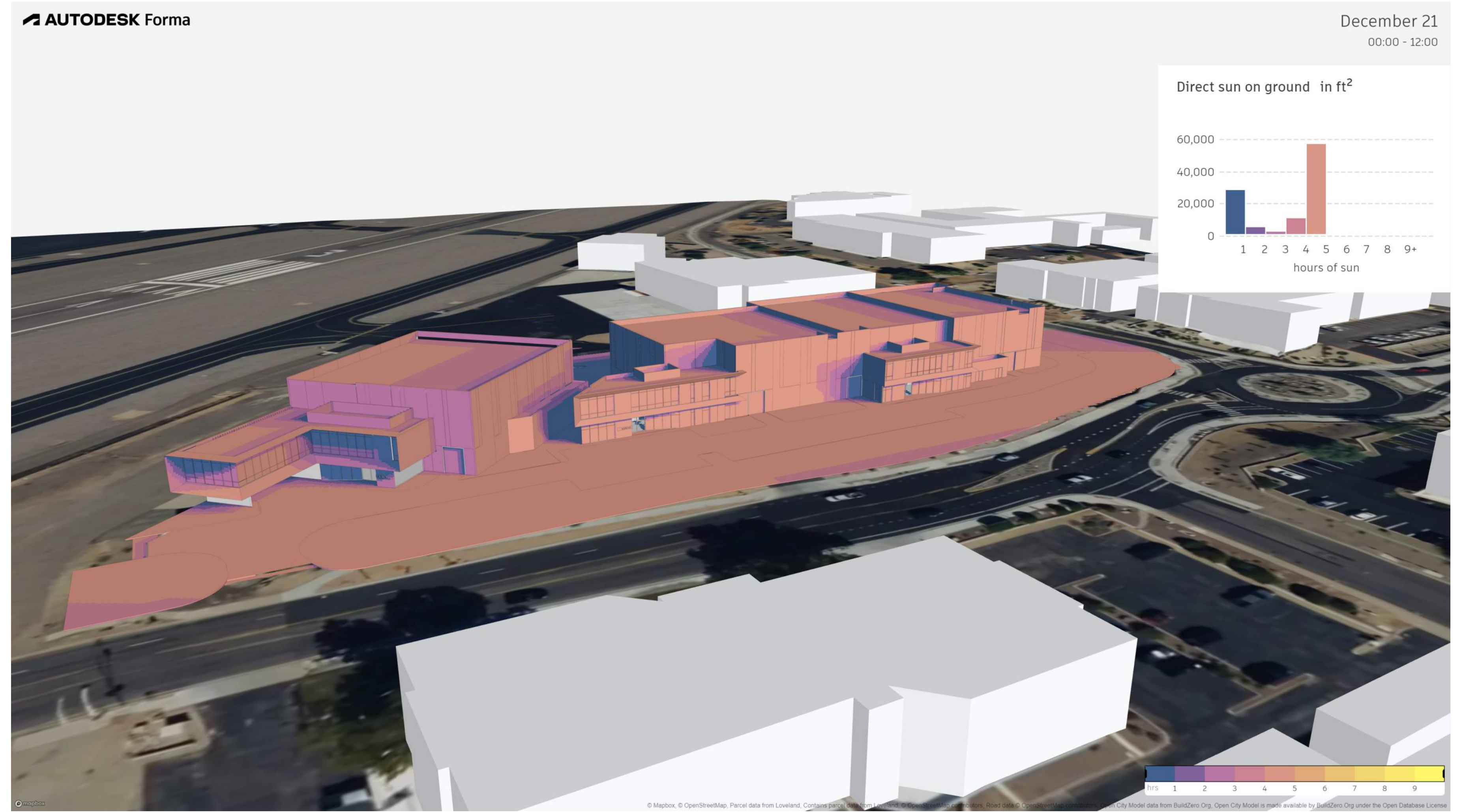


This conceptual design is based upon a preliminary review of entitlement requirements and on unverified and possibly incomplete site and/or building information, and is intended merely to assist in exploring how the project might be developed. Signage shown is for illustrative purposes only and does not necessarily reflect municipal code compliance. All colors shown are for representative purposes only. Refer to material samples for actual color verification.



This conceptual design is based upon a preliminary review of entitlement requirements and on unverified and possibly incomplete site and/or building information, and is intended merely to assist in exploring how the project might be developed. Signage shown is for illustrative purposes only and does not necessarily reflect municipal code compliance. All colors shown are for representative purposes only. Refer to material samples for actual color verification.

SEPTEMBER 21ST - SUN HOUR ANALYSIS
SKYPORT AT REDFIELD HANGARS
 SCOTTSDALE, ARIZONA - PHX24-0033-00



This conceptual design is based upon a preliminary review of entitlement requirements and on unverified and possibly incomplete site and/or building information, and is intended merely to assist in exploring how the project might be developed. Signage shown is for illustrative purposes only and does not necessarily reflect municipal code compliance. All colors shown are for representative purposes only. Refer to material samples for actual color verification.

DECEMBER 21ST - SUN HOUR ANALYSIS
SKYPORT AT REDFIELD HANGARS
 SCOTTSDALE, ARIZONA - PHX24-0033-00

WARE MALCOMB 04.23.2024