

HATCH LEGEND

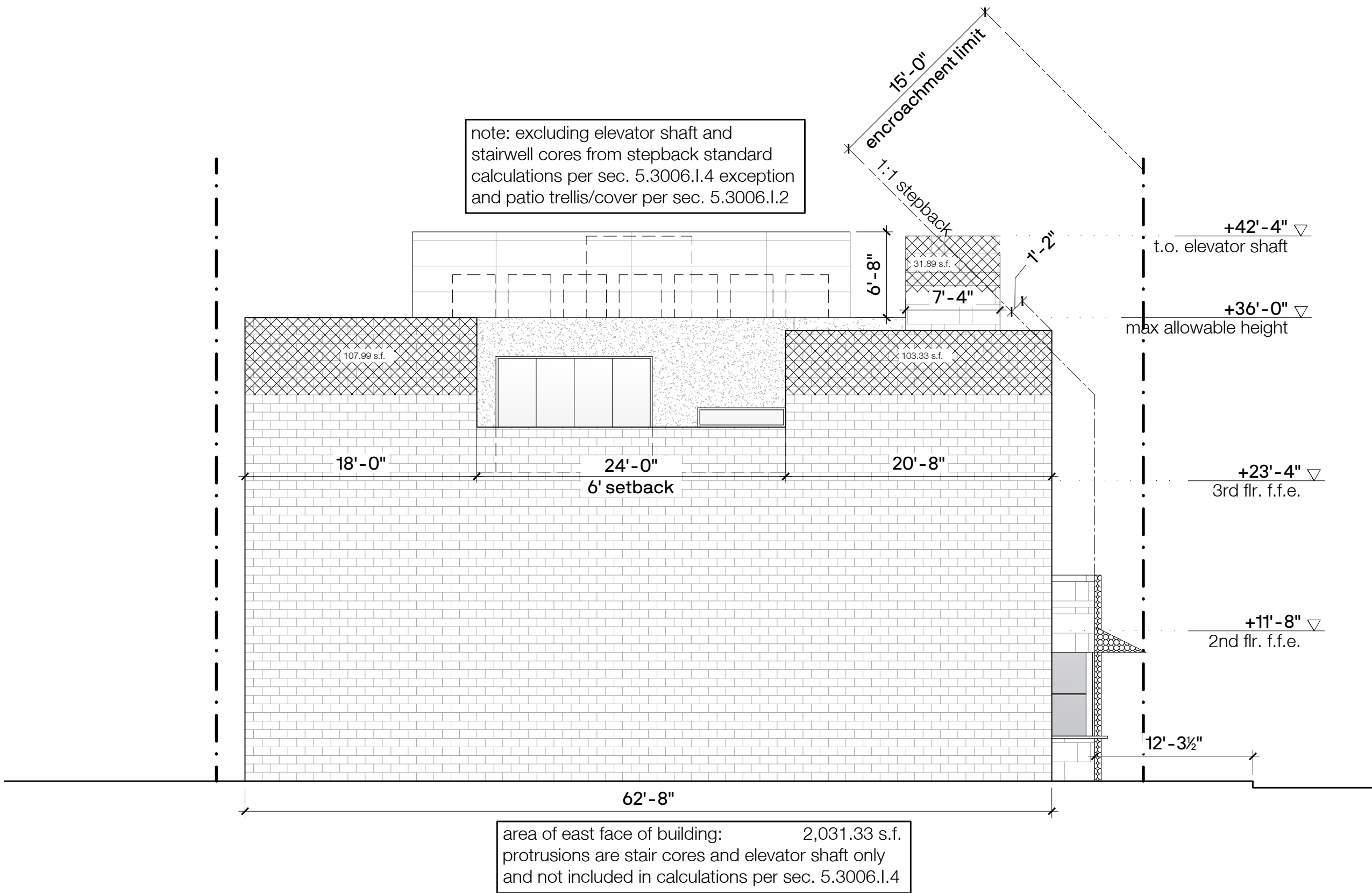
- building projections
- stair/elevator projections allowable per section 5.3006.1.4
- cornice/covered patios/trellis/sidewalk cover projections allowable per section 5.3006.1.2

STAFF DETERMINATION ON SETBACKS:  
SETBACKS APPROVED AS SHOWN BELOW.

GROUND FLOOR SETBACK HONORED AT 12'-3.5" (AS SHOWN ON PLANS) SINCE EXISTING BUILDING WALL IS TO REMAIN IN PLACE.

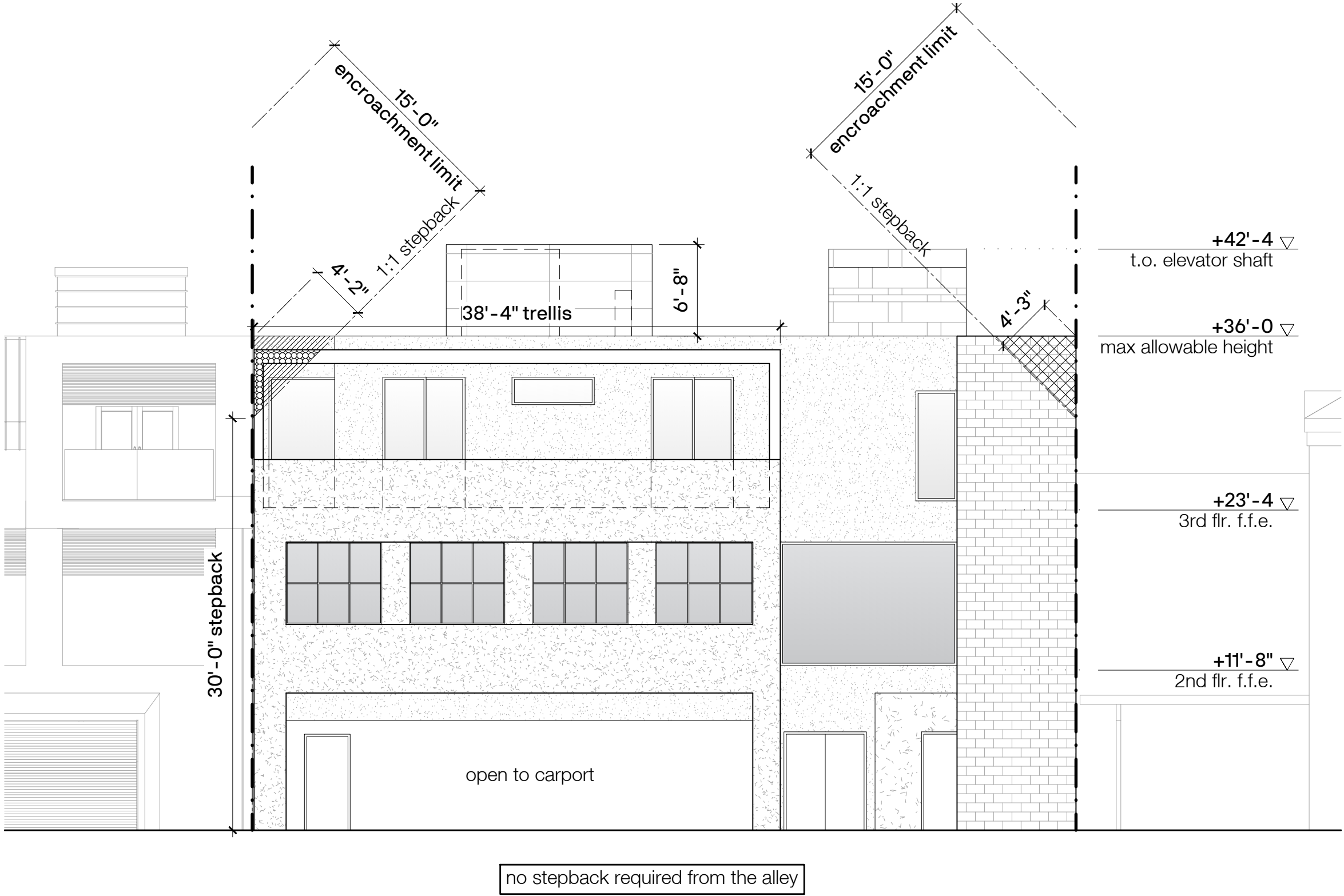
(THIS SAME PROCESS WAS APPROVED FOR THE SITE TO THE WEST VIA 13-DR-2016.)

2ND AND 3RD FLOOR: ADDITIONAL 10' SETBACK (AFTER THE INITIAL 12') IS TAKEN AT A MINIMUM OF 22' FROM BACK OF CURB. PLANS PROVIDE FOR 22'-1.5". THIS IS HOW CASE WAS REVIEWED AND APPROVED.  
- KP & BC



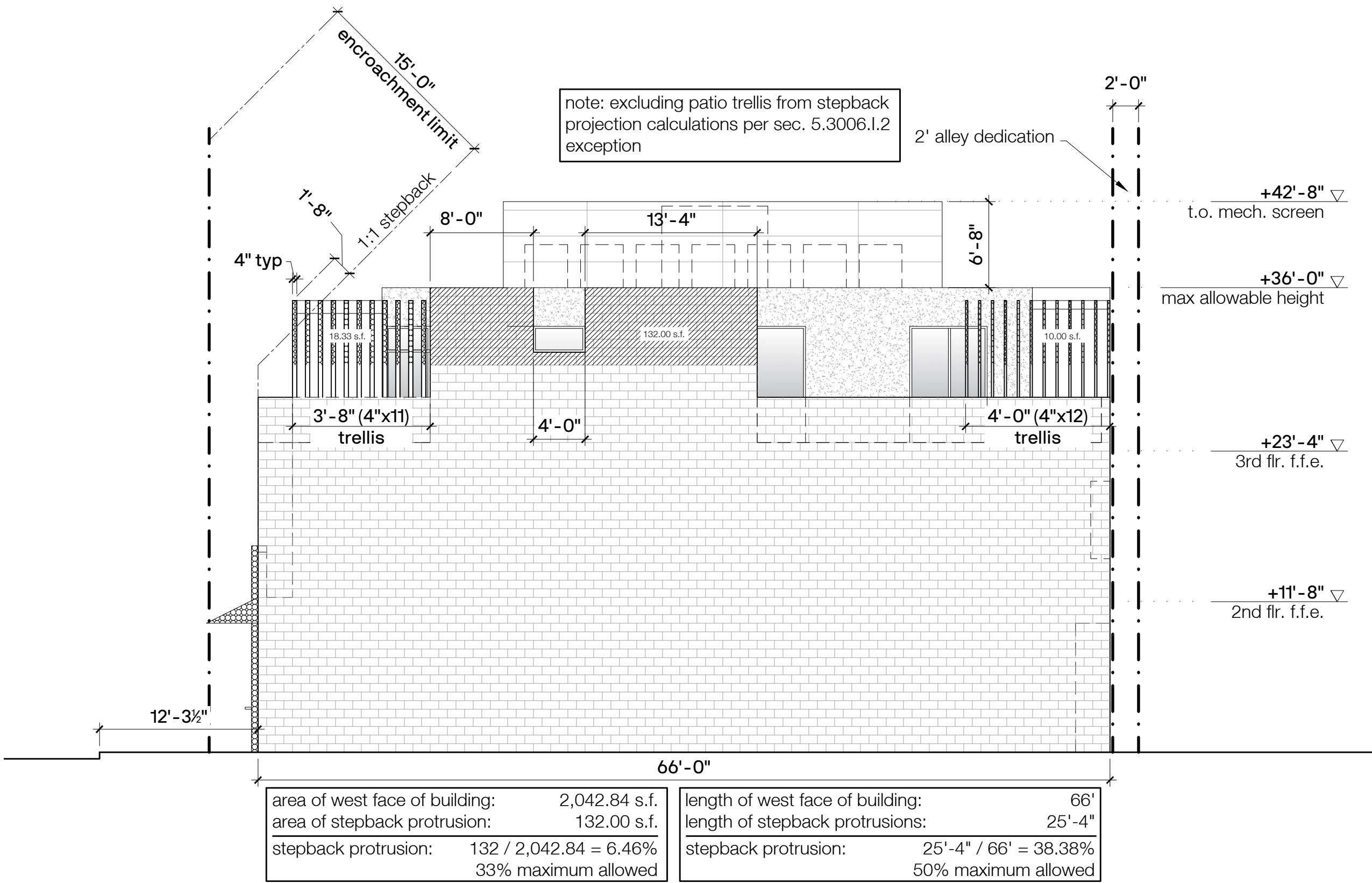
04 . EAST ELEVATION

1/8" = 1'-0"



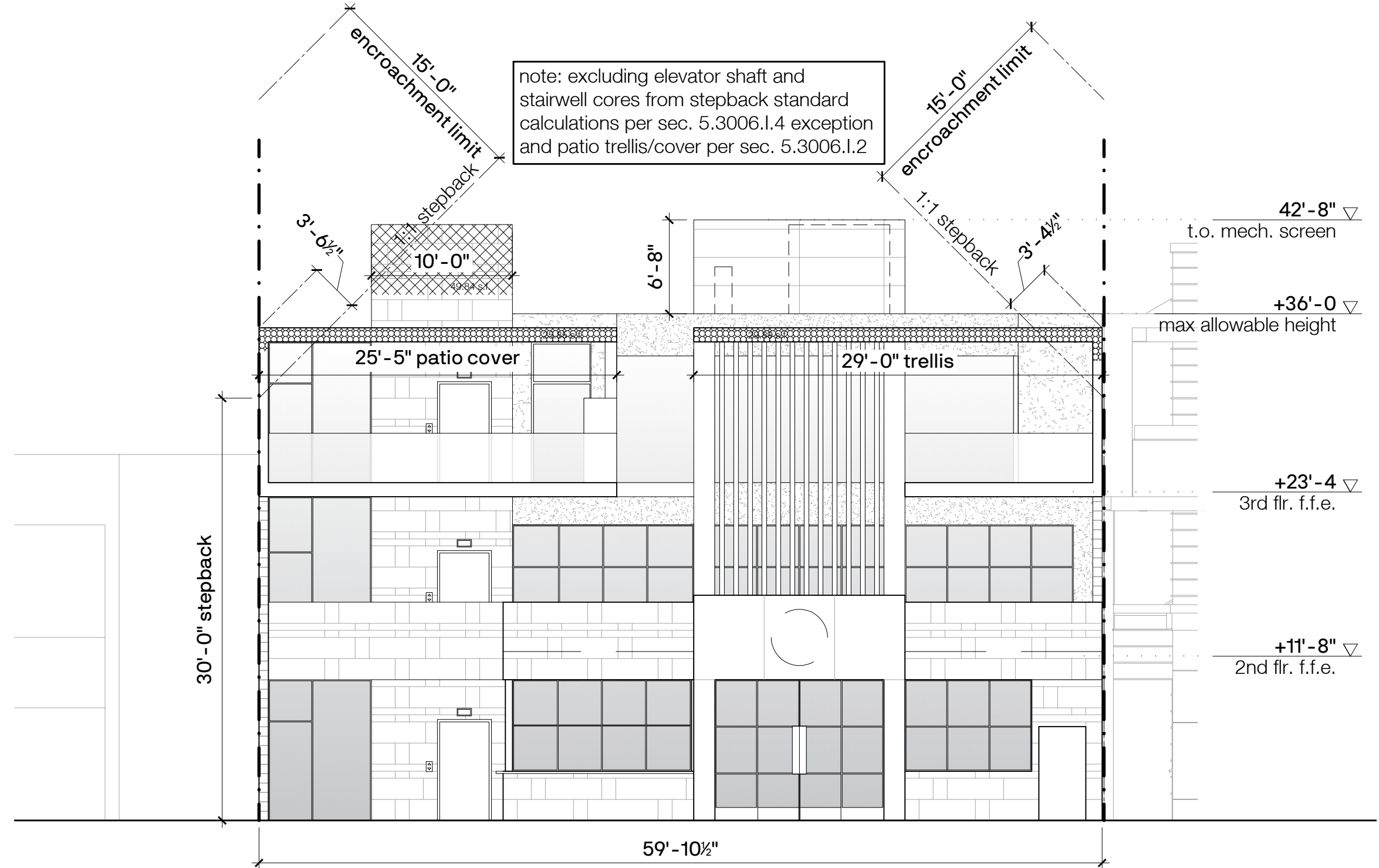
03 . SOUTH ELEVATION

1/8" = 1'-0"



02 . WEST ELEVATION

1/8" = 1'-0"



01 . NORTH ELEVATION

1/8" = 1'-0"

note: level 1 finish floor elevation set at 1260.32 per civil

APPROVED  
STIPULATION SET  
RETAIN FOR RECORDS  
10/24/24  
DATE  
KP & BC  
APPROVED BY

2ND DRB SUBMITTAL  
pre-app no.: 186-pa-2024  
planning no.: 22-dr-2024

revisions

preliminary not for construction

PARIS BAGUETTE 6TH AVE.  
7403 e. 6th ave.  
scottsdale, az 85251

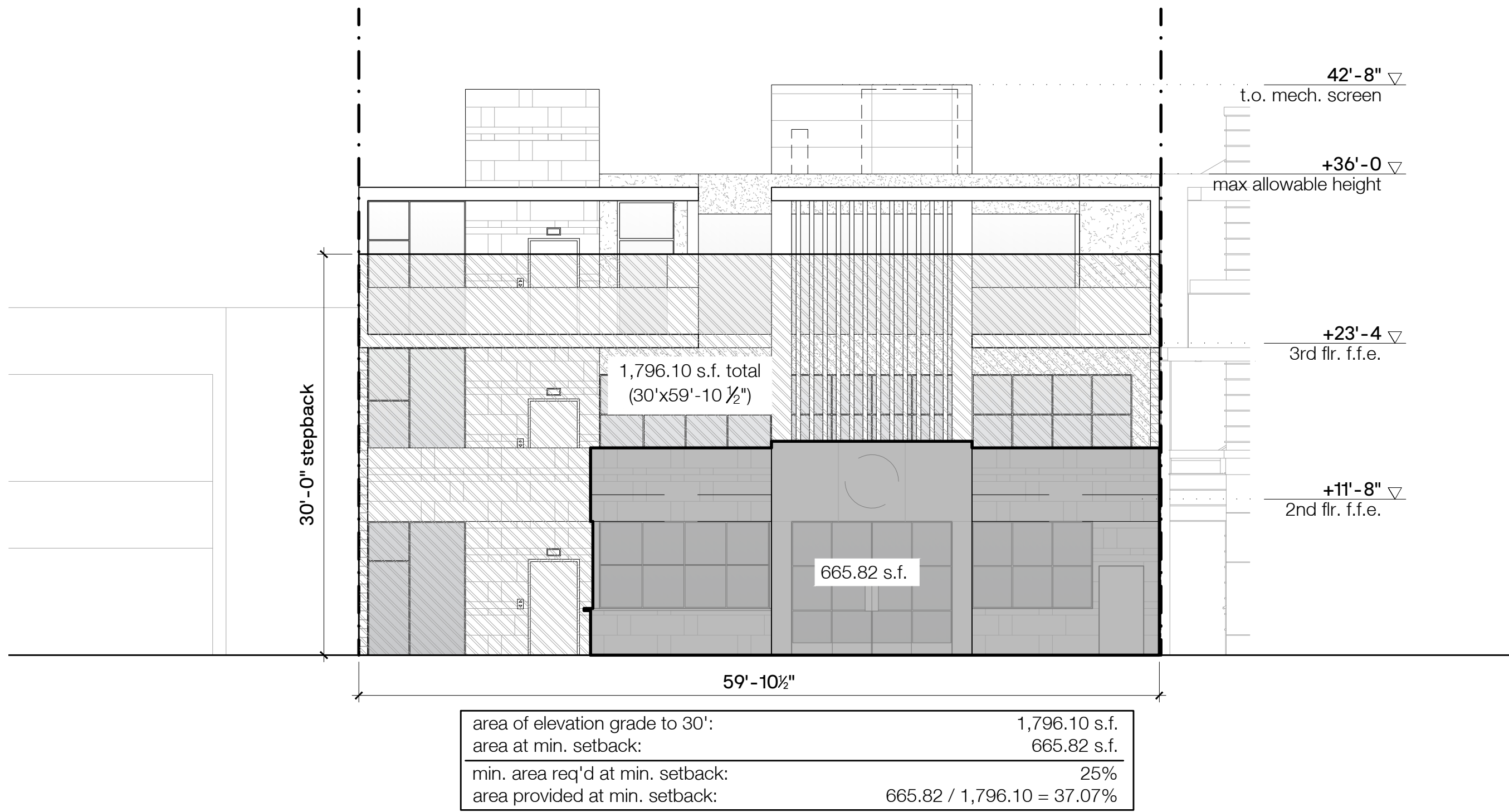
date issued: july 19, 2024  
project # 24006

1340 EAST MAIN STREET #210  
SCOTTSDALE, ARIZONA 85251  
MADEWITHALINE.COM

ALINE  
ARCHITECTURE CONCEPTS

ELEVATIONS  
WORKSHEET

A-3.1a



APPROVED  
STIPULATION SET  
RETAIN FOR RECORDS  
10/24/24  
DATE  
KP & BC  
APPROVED BY

APPROVED  
STIPULATION SET  
RETAIN FOR RECORDS  
10/24/24  
DATE  
KP & BC  
APPROVED BY

01. NORTH ELEVATION SETBACK AREA

1/8" = 1'-0"

POSSESSORY RIGHTS OF DRAWINGS AND PROJECT DESIGNS: ALL PROJECT PLANS, DESIGNS AND SPECIFICATIONS AS INSTRUMENTS OF SERVICE ARE THE PROPERTY OF ALINE ARCHITECTURE CONCEPTS, LLC AND MAY NOT BE UTILIZED IN SIMILAR KIND OR FORM WITHOUT THE WRITTEN CONSENT OF ALINE ARCHITECTURE CONCEPTS, LLC.

2ND DRB SUBMITTAL

pre-app no.: 186-pa-2024  
planning no.: 22-dr-2024

revisions

PARIS BAGUETTE 6TH AVE.

7403 e. 6th ave.  
scottsdale, az 85251

date issued: july 19, 2024  
project # 24006

1340 EAST MAIN STREET #210  
SCOTTSDALE, ARIZONA 85251  
MADEWITHALINE.COM

ALINE  
ARCHITECTURE CONCEPTS

ELEVATIONS  
WORKSHEET

A-3.1b