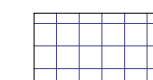
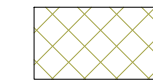




Area Legend

-  FRONT OPEN SPACE
-  OPEN SPACE OTHER THAN FRONT OPEN SPACE
-  PARKING LOT AREA
-  PARKING LOT LANDSCAPE AREA

Area Schedule (TOTAL)				
Number	Area Type	Name	Area	
1	Exterior Area	FRONT OPEN SPACE	4500 SF	
2	Exterior Area	OPEN SPACE OTHER THAN FRONT OPEN SPACE	9690 SF	
3	Exterior Area	PARKING LOT AREA	3155 SF	
4	Exterior Area	PARKING LOT LANDSCAPE AREA	560 SF	
5	Exterior Area	PARKING LOT LANDSCAPE AREA	489 SF	
Grand total: 5			18394 SF	

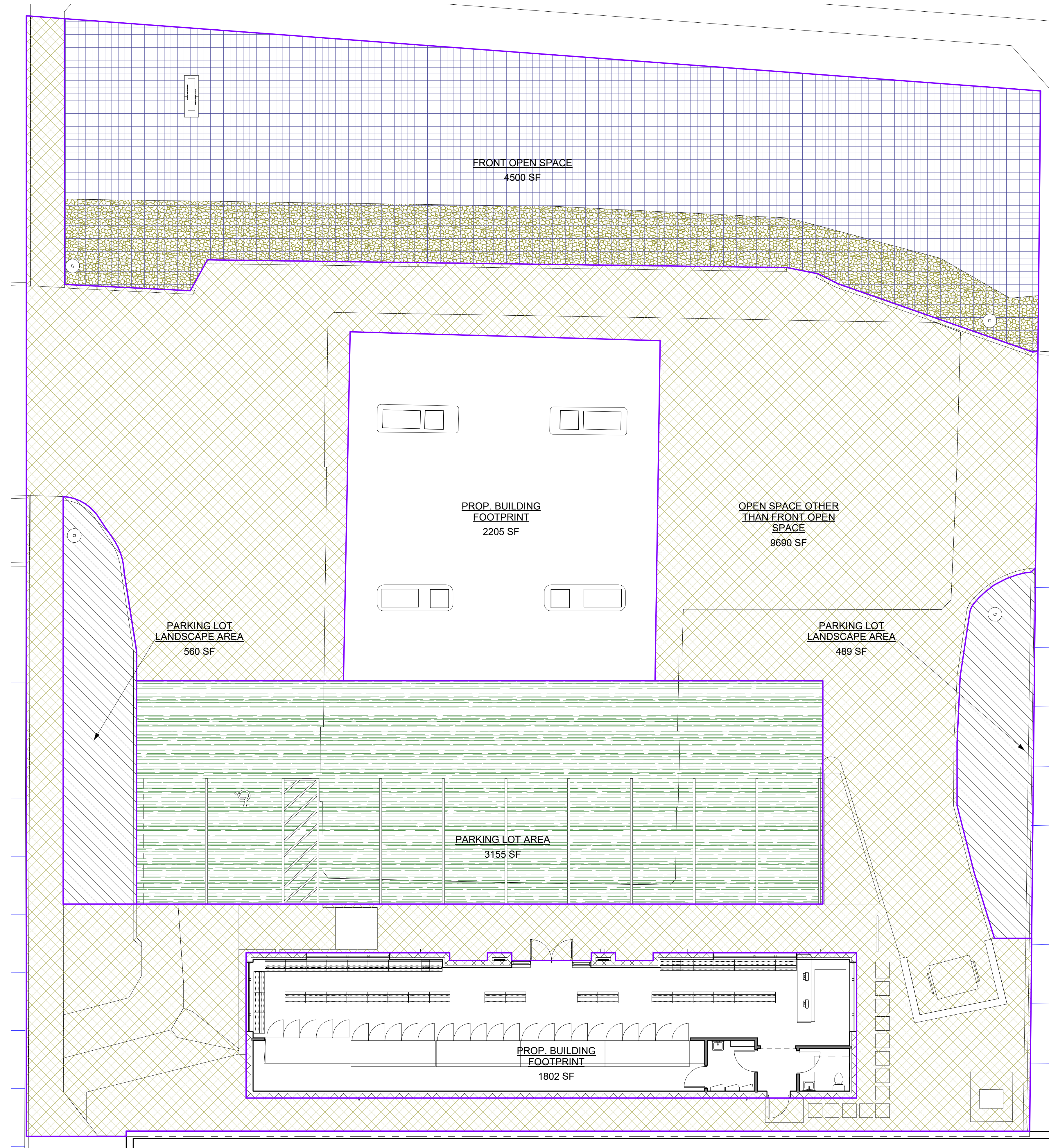
REQUIRED OPEN SPACE					
Area Type	Comments	Area	FIRST 12'	NEXT 10'	OPEN SPACE REQ.
Exterior Area	OPEN SPACE REQUIRED (NOT INCLUDING PARKING LOT LANDSCAPING)	18394 SF	1839 SF	736 SF	2575 SF

PARKING LOT LANDSCAPING REQ.			
Name	Area	(.15)	PARKING LOT LANDSCAPE REQUIRED
PARKING LOT AREA	3155 SF	0.15	473 SF

NOTE
 REQUIRED OPEN SPACE
 $.10 \times 18394 \text{ SF} = 1839.4 + 8' \times .004 \times 18394 = 2575$

TOTAL REQUIRED $2240.02 + 716 = 2956.88$
 PROVIDED 4500 SF

PARKING LOT LANDSCAPE REQUIRED
 $3155 \times 15\% = 473.7 \text{ SF REQ}$
 $560 + 489 = 1049 \text{ SF}$
 PROVIDED 1049 SF



1 OPEN SPACE PLAN
 1/8" = 1'-0"



1871 AUSTIN DRIVE TROY
 MICHIGAN 48063
 OFFICE: 248-524-3616
 EMAIL: aekalajian@bcglobal.net



IMAD POTRES
 C: 586.707.0080
 E: IMADPOTRES@GMAIL.COM

PROPOSED REMODELING
 OF AN EXISTING BUILDING

CONTACT PERSON/OWNER

SIMON DISHOW
 EMAIL: SDISHOW87@GMAIL.COM
 PH: 586.864.8848

RENO. EXIST.
 GAS STATION
 8233 N. VIA PASO DEL NORTE
 SCOTTSDALE, ARIZ. 85258

DESCRIPTION:
 SITE SPACE PLAN

DRAWN BY: NT
 CHECKED BY: AK
 DATE: 06.23.23
 PROJECT #: 008-23-03-16
 SCALE: 1/8" = 1'-0"



Date	No.	Issued by

SHEET NO.

SP-3.2

COPYRIGHT 2023

THIS DOCUMENT & SUBJECT MATTER CONTAINED THEREIN IS PROPRIETARY AND IS INTENDED ONLY FOR THE USE OF THE INDIVIDUAL OR ENTITY FOR WHICH IT WAS PREPARED AND IS NOT TO BE USED OR REPRODUCED WITHOUT THE WRITTEN PERMISSION OF KALAJIAN ARCHITECTURE & DESIGN LLC.

6/23/2023 10:50 PM