



10.04.24

PERSPECTIVE FROM CAVASSON

TOLL AT CAVASSON | TOLL BROTHERS

SCOTTSDALE, ARIZONA

TOLLAZ-2401

 woodley
architectural
group, inc

colorado // 731 southpark dr. suite B
littleton, co 80120 / 303.683.7231
california // 2943 pullman st. suite A
santa ana, ca 92705 / 949.553.8919

these drawings are intended for design development and preliminary studies only and are not to be used for any other purpose, such as final plotting or final engineering. copyright Woodley Architectural Group, Inc. these drawings may not be used or duplicated without the expressed written permission of Woodley Architectural Group, Inc.



10.04.24

COMMUNITY PERSPECTIVE

TOLL AT CAVASSON | TOLL BROTHERS

SCOTTSDALE, ARIZONA

TOLLAZ-2401



woodley
architectural
group, inc

colorado // 731 southpark dr. suite B
littleton, co 80120 / 303 683.7231
california // 2943 pullman st. suite A
santa ana, ca 92705 / 949 553.8919

these drawings are intended for design development and preliminary studies only and are not to be used for any other purpose, such as final plotting or final engineering. copyright Woodley Architectural Group, Inc. these drawings may not be used or duplicated without the expressed written permission of Woodley Architectural Group, Inc.



FRONT



FRONT



REAR



REAR

10.04.24

4-2-1-3 BUILDING | PERSPECTIVES

TOLL AT CAVASSON | TOLL BROTHERS

SCOTTSDALE, ARIZONA

NOTE: SQUARE FOOTAGE MAY VARY BASED ON CALCULATION METHODS
THESE DRAWINGS ARE INTENDED FOR DESIGN DEVELOPMENT AND PRELIMINARY STUDIES ONLY AND ARE NOT TO BE USED FOR ANY OTHER PURPOSE, SUCH AS FINAL PLOTTING OR FINAL ENGINEERING. COPYRIGHT WOODLEY ARCHITECTURAL GROUP, INC. THESE DRAWINGS MAY NOT BE USED OR DUPLICATED WITHOUT THE EXPRESS WRITTEN PERMISSION OF WOODLEY ARCHITECTURAL GROUP, INC.

TOLLAZ-2401





FRONT



FRONT



REAR



REAR

10.04.24

1x-1-4 BUILDING | PERSPECTIVES

TOLL AT CAVASSON | TOLL BROTHERS

SCOTTSDALE, ARIZONA

NOTE: SQUARE FOOTAGE MAY VARY BASED ON CALCULATION METHODS
THESE DRAWINGS ARE INTENDED FOR DESIGN DEVELOPMENT AND PRELIMINARY STUDIES ONLY AND ARE NOT TO BE USED FOR ANY OTHER PURPOSE, SUCH AS FINAL PLOTTING OR FINAL ENGINEERING. COPYRIGHT WOODLEY ARCHITECTURAL GROUP, INC. THESE DRAWINGS MAY NOT BE USED OR DUPLICATED WITHOUT THE EXPRESS WRITTEN PERMISSION OF WOODLEY ARCHITECTURAL GROUP, INC.

TOLLAZ-2401

woodley
architectural
group, inc

colorado // 731 southpark dr. suite B
littleton, co 80120 / 303.683.7231
california // 2943 pullman st. suite A
santa ana, ca 92705 / 949.553.8919



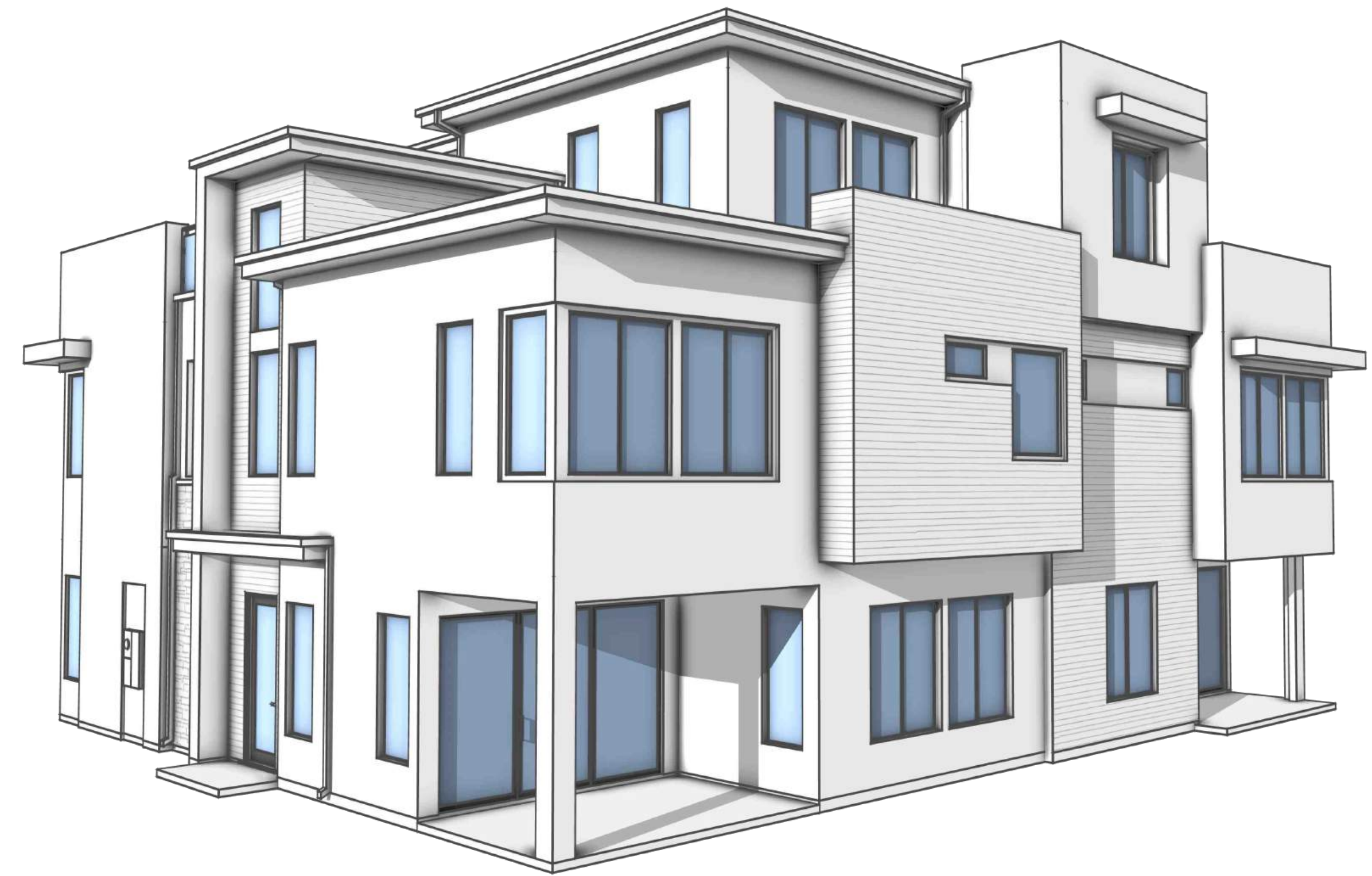
FRONT



FRONT



REAR



REAR

10.04.24

1x-4 BUILDING | PERSPECTIVES
TOLL AT CAVASSON | TOLL BROTHERS
 SCOTTSDALE, ARIZONA

NOTE: SQUARE FOOTAGE MAY VARY BASED ON CALCULATION METHODS
 THESE DRAWINGS ARE INTENDED FOR DESIGN DEVELOPMENT AND PRELIMINARY STUDIES ONLY AND ARE NOT TO BE USED FOR ANY OTHER PURPOSE, SUCH AS FINAL PLOTTING OR FINAL ENGINEERING. COPYRIGHT WOODLEY ARCHITECTURAL GROUP, INC. THESE DRAWINGS MAY NOT BE USED OR DUPLICATED WITHOUT THE EXPRESS WRITTEN PERMISSION OF WOODLEY ARCHITECTURAL GROUP, INC.

TOLLAZ-2401