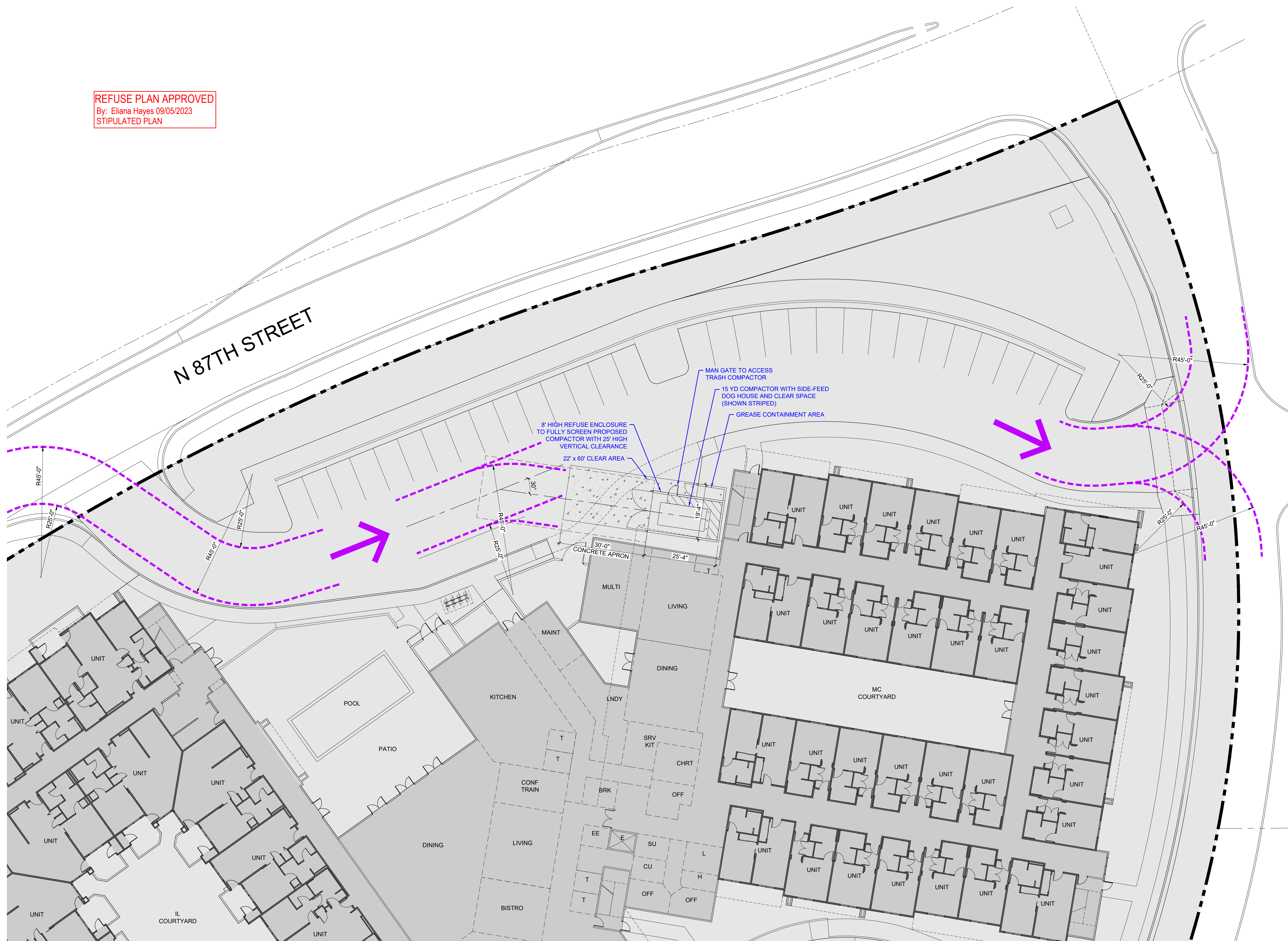
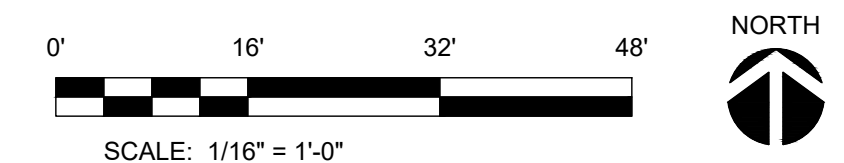


**REFUSE PLAN APPROVED**  
 By: Eliana Hayes 09/05/2023  
 STIPULATED PLAN

REFUSE INFORMATION	
EDGE OF SOLID WASTE TRUCK PATH	-----
REFUSE CALCULATIONS: CITY OF SCOTTSDALE REQUIREMENT, WITHOUT RECYCLING:	
1 ENCLOSURE PER 20 DWELLING UNITS	7.1 ENCLOSURES REQUIRED
142 DWELLING UNITS / 20 DWELLING UNITS =	42.6 CUBIC YDS
7.1 ENCLOSURES (BINS) x 6 CUBIC YDS PER BIN =	42.6 CUBIC YDS
CAPACITY NEEDED (42.6 CUBIC YDS @ 3:1 COMPACTION RATIO) =	14.2 CUBIC YDS
REFUSE STORAGE PROVIDED: 15 CU YD SELF-CONTAINED COMPACTOR, MARATHON RJ-250SC PROVIDED	
(REFUSE PICK-UP SCHEDULE WILL BE ADJUSTED TO ACCOMMODATE ACTUAL NEEDS)	



Refuse Plan



**NORTHSIGHT BLVD (IL, AL, MC)**

13875 N Northsight Blvd, Scottsdale, AZ 85260  
 Project No.: 22015  
 7/6/23