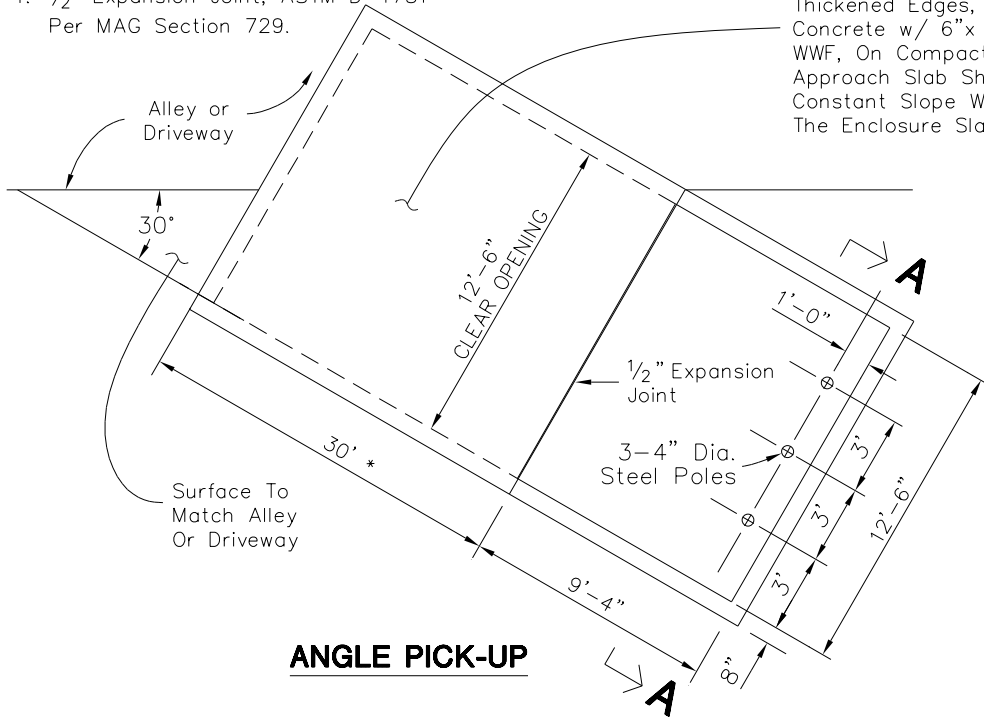


NOTE:

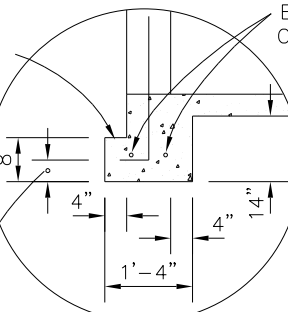
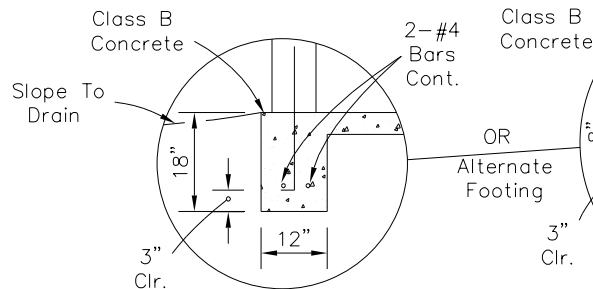
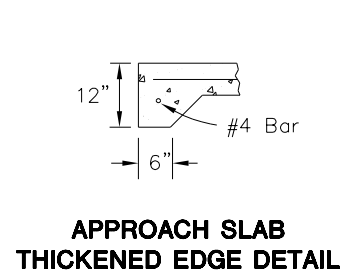
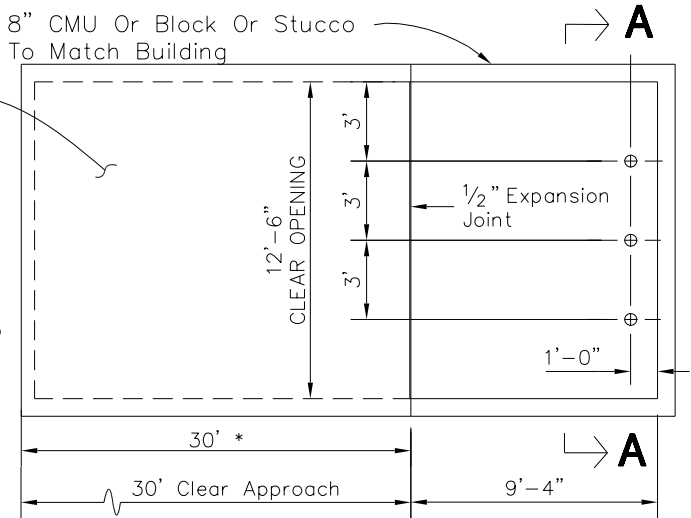
1. 1/2" Expansion Joint, ASTM D-1751 Per MAG Section 729.

30' x 14' x 6" Thick Concrete Approach Slab With Thickened Edges, Class B Concrete w/ 6"x 6", 1.4 x 1.4 WWF, On Compacted Subgrade. Approach Slab Shall Have A Constant Slope Which Matches The Enclosure Slab.

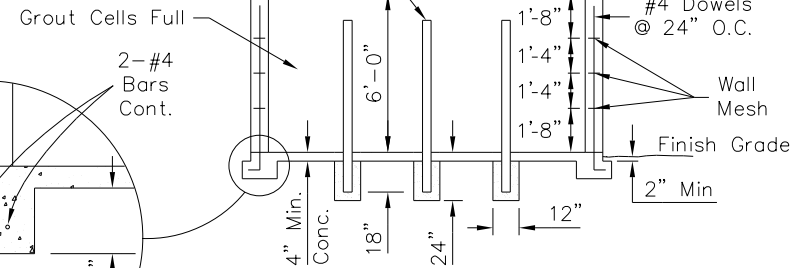
8" CMU Or Block Or Stucco To Match Building



* In locations where a 30' approach slab is not possible, approval from the City of Scottsdale Quality Compliance Division is required.



Place 3-4" Dia. Steel Poles 60" Above Grade Cap Or Grout Full. Paint To Match Wall Color.



DETAIL NO.
2146-1

**City of Scottsdale
Standard Details**

APPROVED BY:
**Scottsdale Standards &
Specifications Committee**

REFUSE ENCLOSURE

DETAIL NO.
2146-1