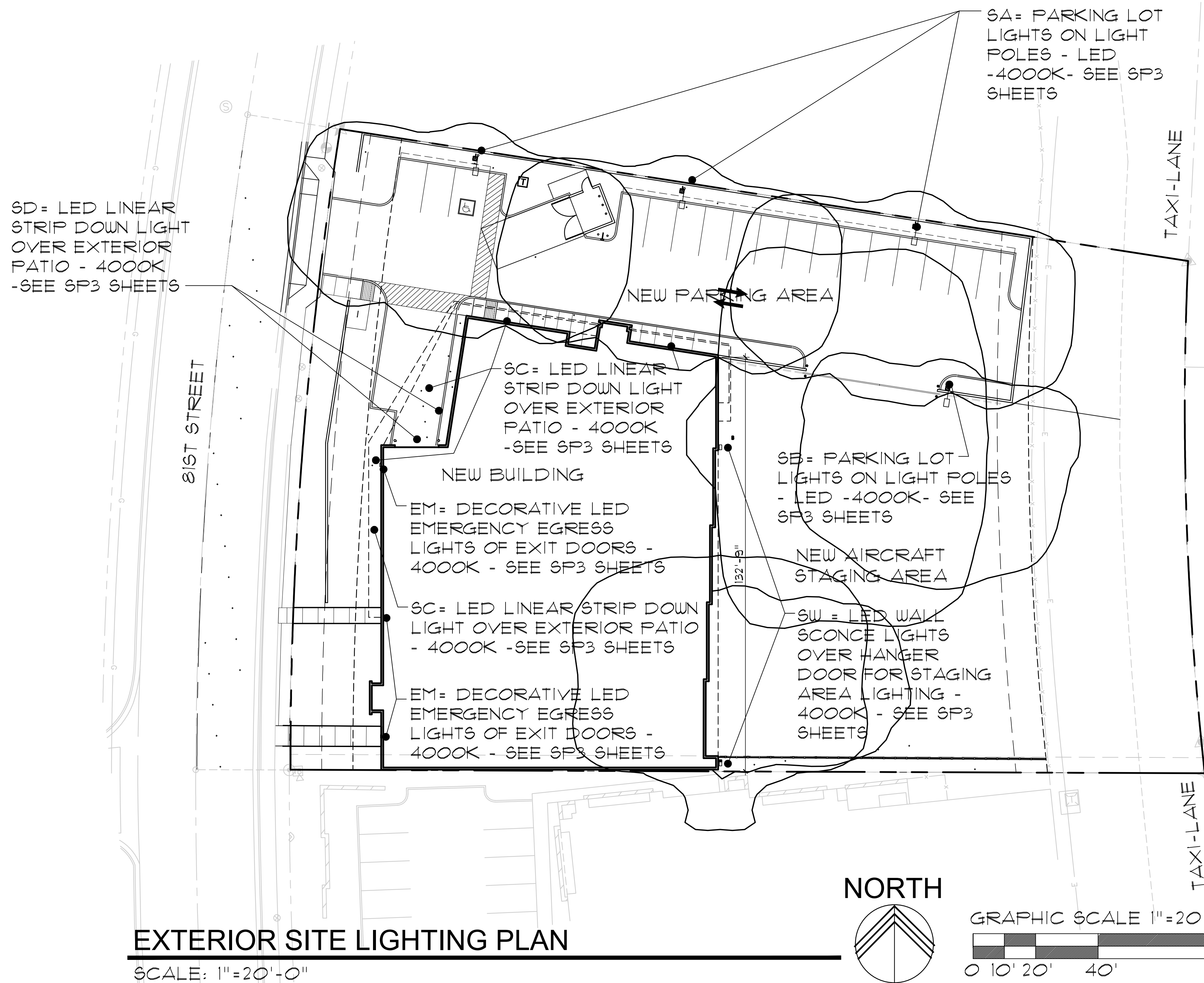


SEE SP3.0 & SP3.1 FOR FIXTURE CUT SHEETS

LIGHTING GENERAL NOTES

- 1. IN ACCORDDANCE WITH SEC. 16.00 OF THE ZONING ORDINANCE THE LIGHT FIXTURE SHALL BE SHOWN TO BE DIRECTED DOWNWARD, OR HAVE THE LIGHT SOURCE HOUSED IN A WAY THAT THE LIGHT TRESPASS IS CUT OFF TO DIRECT IT DOWNWARD.
- 2. ALL EXTERIOR LUMINAIRES THAT ARE MOUNTED EIGHT (8) FEET OR HIGHER, ABOVE ADJACENT FINISH GRADE, SHALL BE DIRECTED DOWNWARD.
- 3. ALL EXTERIOR LUMINAIRES WITH A TOTAL INITIAL LUMEN OUTPUT OF GREATER THAN 1600 SHALL HAVE AN INTEGRAL LIGHTING SHIELD.
- 4. LUMINAIRES WITH A TOTAL INITIAL LUMIN OUTPUT OF GREATER THAN 3050 SHALL BE DIRECTED DOWNWARD AND DOMPLY WITH ILLUMINATING ENGINEERING SOCIETY OF NORTH AMERICA (IES) REQUIREMENTS FOR FULL CUT OFF.



EXTERIOR SITE LIGHTING PLAN

SCALE: 1"=20'-0"