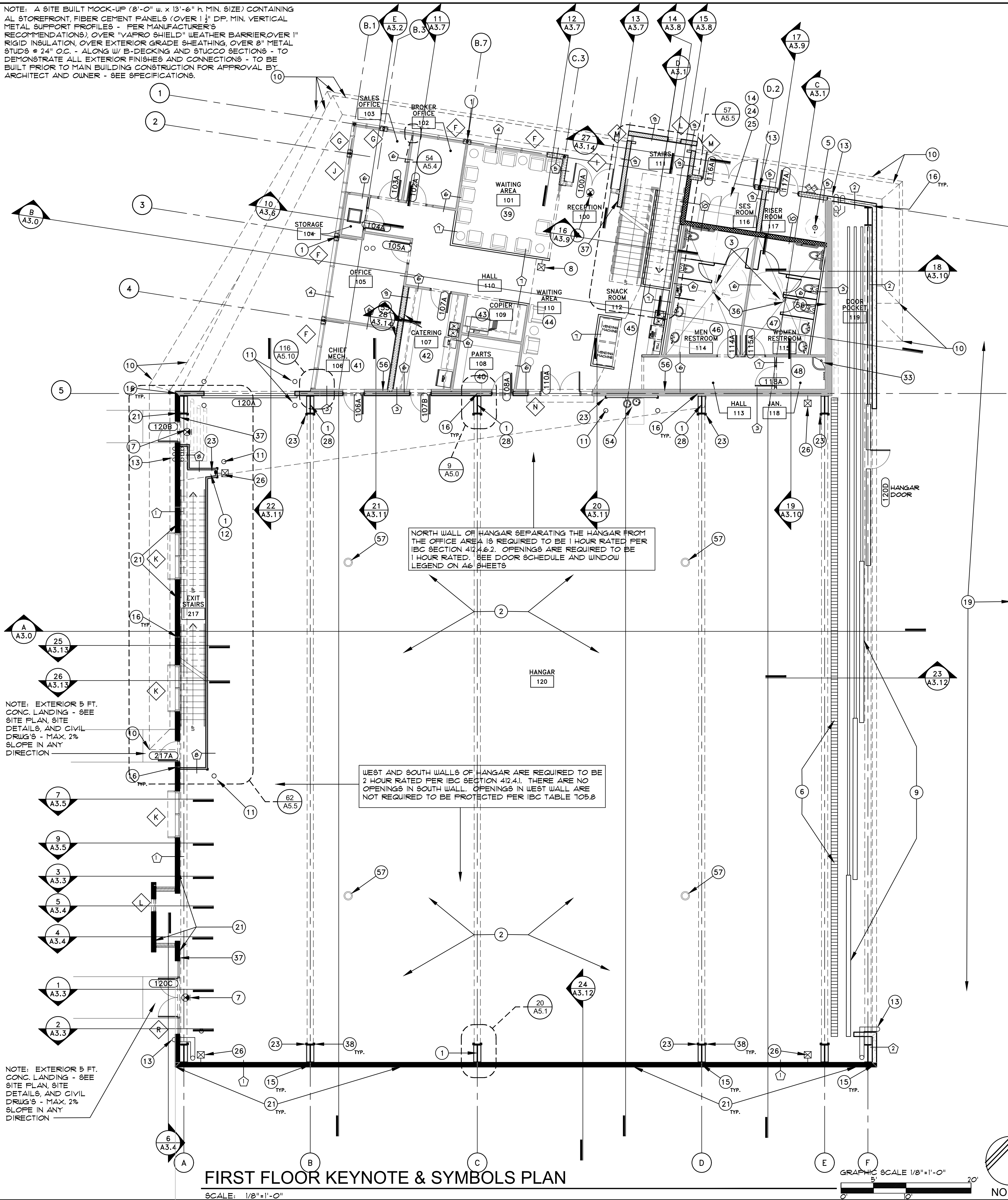


NOTE: A SITE BUILT MOCK-UP (8'-0" w. x 13'-6" h. MIN. SIZE) CONTAINING AL STOREFRONT, FIBER CEMENT PANELS (OVER 1 1/2" D.P. MIN. VERTICAL METAL SUPPORT PROFILES - PER MANUFACTURER'S RECOMMENDATIONS), OVER "VAPRO SHIELD" WEATHER BARRIER OVER 1" RIGID INSULATION, OVER EXTERIOR GRADE SHEATHING, OVER 8" METAL STUDS @ 24" O.C. - ALONG W/ B-DECKING AND STUCCO SECTIONS - TO DEMONSTRATE ALL EXTERIOR FINISHES AND CONNECTIONS - TO BE BUILT PRIOR TO MAIN BUILDING CONSTRUCTION FOR APPROVAL BY ARCHITECT AND OWNER - SEE SPECIFICATIONS.





NOTE: USE MOISTURE RESISTANT GREEN BOARD
AT ALL WET LOCATIONS

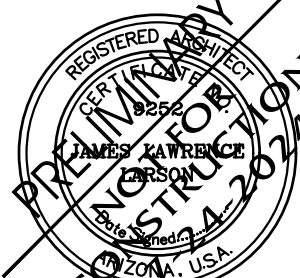
Larson Associates Architects, Inc.
3807 North 24th Street, Suite 100
Phoenix, AZ 85016
602.955.9929 602.954.4790 FAX
design@larson-architects.com

Larson

ITY JENKINS HANGAR
16061 NORTH 81ST STREET
SCOTTSDALE, AZ
APN: 215-48-054



EXPIRES: 6/30/2024



EXPIRES: 6/30/2027

Drawing Name:
FIRST FLOOR
PLAN

Revisions
1 CITY COMMENTS
11/16/2018

Date: 11/6/2020

Project Number:
17-029

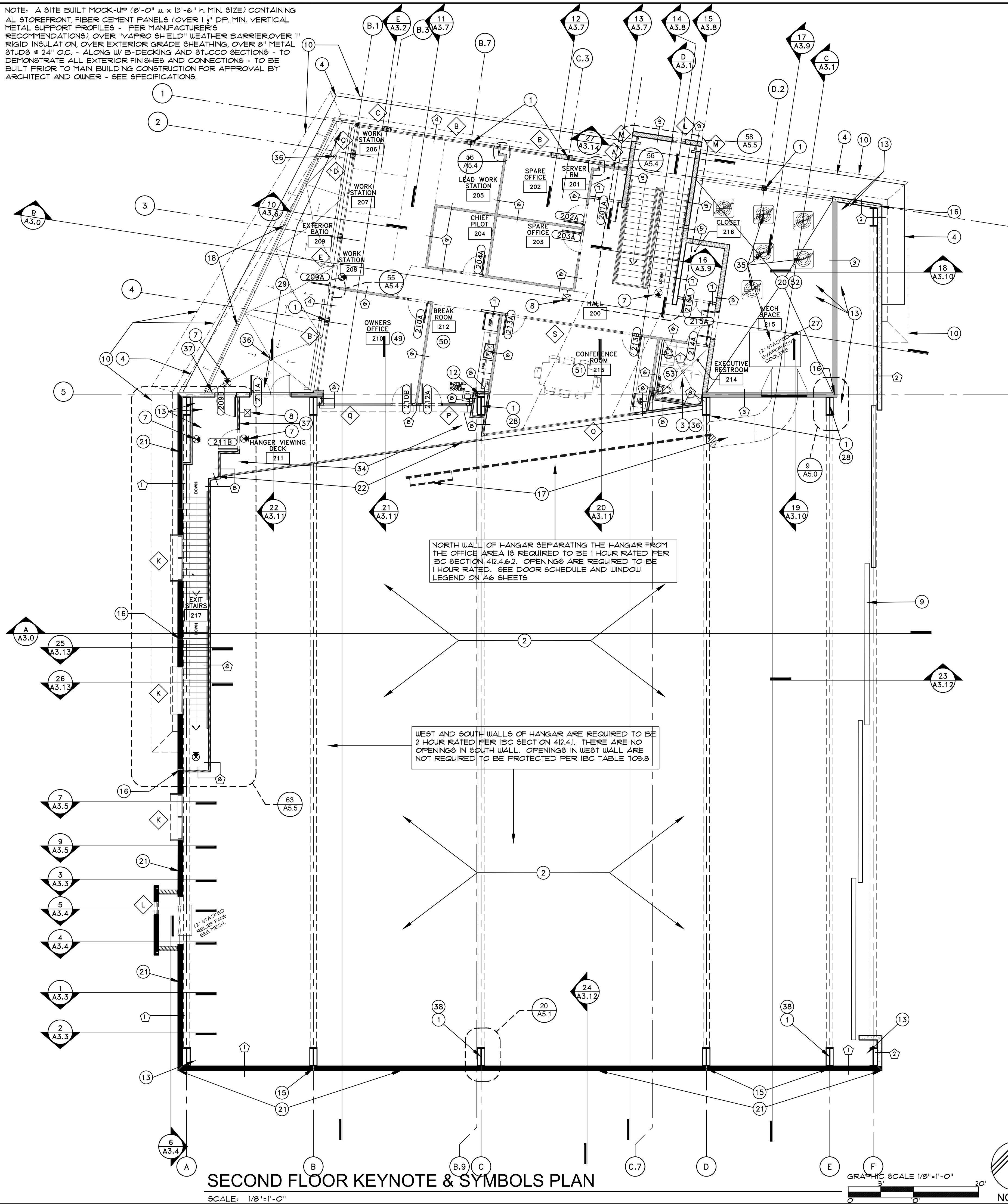
Drawing No:

A1.0b

659-PA-2024

659-PA-2024

NOTE: A SITE BUILT MOCK-UP (8'-0" w. x 13'-6" h. MIN. SIZE) CONTAINING AL STOREFRONT, FIBER CEMENT PANELS (OVER 1 1/2" DP. MIN. VERTICAL METAL SUPPORT PROFILES - PER MANUFACTURER'S RECOMMENDATIONS), OVER "VAIPRO SHIELD" WEATHER BARRIER OVER 1" RIGID INSULATION, OVER EXTERIOR GRADE SHEATHING, OVER 8" METAL STUDS @ 24" O.C. - ALONG W/ B-DECKING AND STUCCO SECTIONS - TO DEMONSTRATE ALL EXTERIOR FINISHES AND CONNECTIONS - TO BE BUILT PRIOR TO MAIN BUILDING CONSTRUCTION FOR APPROVAL BY ARCHITECT AND OWNER - SEE SPECIFICATIONS.



FLOOR PLAN KEYNOTES

NOTE: NOT ALL KEYNOTES MAY BE USED ON THIS SHEET

- STRUCTURAL COLUMN - SEE STRUCTURAL DRAWINGS AND FIRE-ENGINEERED METAL BUILDING DRAWINGS
- EPOXY COATED CONCRETE SLAB WITH HARDENER OVER ABC - SEE FINISH SCHEDULE - SEE STRUCTURAL AND PLUMBING DRAWINGS - SLOPE SLAB DOWN TO TRENCHES AT 1/8" PER FOOT
- SLOPE SLAB DOWN AT 1/8" PER FOOT TO FLOOR DRAIN - SEE STRUCTURAL DRAWINGS
- LINE OF EDGE OF SHADE CORNICE FOR 1ST FLOOR BELOW - SEE EXTERIOR ELEVATIONS AND SECTIONS
- FIRE RISER OR STAND PIPING w/ CLEARANCES PER FIRE ORDINANCE REQUIREMENT #9 - SEE FIRE PROTECTION SHOP DRAWINGS
- TRENCH DRAIN WITH HEAVY CAPACITY GRATE - DRAIN PER CIVIL DRAWINGS, PLUMBING DRAWINGS, AND 2/A5.0
- EXIT LIGHT - SEE ELECTRICAL DRAWINGS
- RECESSED 10 LBS. FIRE EXTINGUISHER (TYPE 2:A-10;BC AT OFFICES AND MEZZANINE) AND CABINET - SEE SPECIFICATIONS, SYMBOL LEGEND, AND 39/A5.3 (SEE KEYNOTE #6 FOR EXTINGUISHERS AT WITHIN THE HANGAR)
- ONE WAY SLIDING AIRCRAFT HANGAR DOOR - SEE SPECS, EXTERIOR ELEVATIONS, SECTIONS, AND DOOR MANUFACTURER'S SHOP DRAWINGS
- SHADE CORNICE ABOVE - SEE ELEVATIONS, BLDG. SECTIONS, AND WALL SECTIONS
- 6'-0" HIGH, 6" DIAM. CONC. FILLED STEEL BOLLARDS - SEE DETAIL 21, 22, & 23/A5.2
- COLUMN ENCLOSED WITHIN ONE HOUR RATED WALL
- ROOF AND OVER FLOW DRAINS AND LEADERS - SEE ROOF PLAN & PLUMB. DRAWINGS & CIVIL PLANS & DETAILS 1 & 6/A5.0
- S.E.S. INSIDE (1) HR RATED ELEC. ROOM - SEE ELECTRICAL DRAWINGS
- CONCRETE TILT SLAB JOINT IN 2 HR RATED WALL - SEE 14/A5.1
- CONCRETE TILT SLAB JOINT - SEE DETAILS 11, & 12/A5.1
- DUCTING FOR HANGAR AREA EVAPORATIVE COOLING - SEE MECHANICAL DRAWINGS
- EXTERIOR 2ND FLOOR PATIO GUARDRAIL - SEE 8/A5.1
- CONCRETE AIRCRAFT APRON - SEE CIVIL DRAWINGS
- NO ROOF ABOVE THIS AREA - SEE SECTIONS (A3 SHEETS)
- MIN. TWO HOUR RATED CONCRETE WALL - SEE WALL LEGEND AND 14/A5.1
- INTERIOR HANGAR VIEWING DECK GUARD RAIL - SEE 11/A5.6
- 3"x3" 22 GA. GALVANIZED METAL ANGLE CORNER GUARD AT ALL EXPOSED EXTERIOR DRYWALL CORNERS IN HANGAR SPACES FROM FLOOR TO 6'-0" AFF. - TYPICAL
- MCC CONTROLS - SEE ELECTRICAL DRAWINGS
- ELECTRICAL TRANSFORMERS AND PANELS - SEE ELECTRICAL DRAWINGS
- SURFACE MOUNTED 10 LBS FIRE EXTINGUISHER - 4:A-60;BC TYPE AT HANGAR - SEE SPECIFICATIONS, SYMBOLS LEGEND AND 40/A5.6 (SEE KEYNOTE #9 FOR OFFICE LOCATIONS)
- MECHANICAL EQUIPMENT PLATFORM - SEE STRUCTURAL DRAWINGS
- 1 HR RATING AROUND COLUMN PER UL #526 - SEE DETAIL 122/A5.11
- SEE 16/A4.6 FOR ENLARGED 2ND FLOOR EXTERIOR PATIO AREA - SLOPE SLAB DOWN TO FLOOR DRAINS @ 1/8" PER FOOT - SEE STRUCT & PLUMB
- H.C. ACCESSIBLE BOTTLED WATER DISPENSER
- 20 GAL CAPACITY ICE MACHINE
- HOT WATER STORAGE TANK - SEE PLUMBING DRAWINGS
- MOP SINK - SEE PLUMBING DRAWINGS
- SEE 17/A4.6 FOR ENLARGED 2ND FLOOR HANGAR VIEWING DECK AREA
- MECHANICAL EQUIPMENT - SEE MECHANICAL PLANS
- FLOOR DRAIN/SINK - SEE PLUMBING PLANS
- TACTILE SIGN STATING "EXIT" AND COMPLYING WITH 2010 ADA - SEE DETAIL 11/A5.11
- PROVIDE 2 HR FIRE PROTECTION AROUND STEEL COLUMN AT TWO HOUR RATED WALL PER UL X516 - SEE DETAIL 123/A5.11
- WAITING AREA 101 - SEE 1/A4.0 FOR ENLARGED PLAN AND INTERIOR ELEVATIONS
- PARTS ROOM - SEE 2/A4.0 FOR ENLARGED PLAN AND INTERIOR ELEVATIONS
- CHIEF MECHANIC'S ROOM - SEE 3/A4.0 FOR ENLARGED PLAN AND INTERIOR ELEVATIONS
- CATERING ROOM - SEE 4/A4.1 FOR ENLARGED PLAN AND INTERIOR ELEVATIONS
- COPIER ROOM - SEE 5/A4.1 FOR ENLARGED PLAN AND INTERIOR ELEVATIONS
- WAITING AREA 110 - SEE 6/A4.1 FOR ENLARGED PLAN AND INTERIOR ELEVATIONS
- SNACK AREA - SEE 7/A4.2 FOR ENLARGED PLAN AND INTERIOR ELEVATIONS
- MEN'S RESTROOM - SEE 8/A4.2 FOR ENLARGED PLAN AND INTERIOR ELEVATIONS
- WOMEN'S RESTROOM - SEE 9/A4.2 FOR ENLARGED PLAN AND INTERIOR ELEVATIONS
- JANITOR CLOSET - SEE 10/A4.3 FOR ENLARGED PLAN AND INTERIOR ELEVATIONS
- OWNER'S OFFICE - SEE 11/A4.4 FOR ENLARGED PLAN AND INTERIOR ELEVATIONS
- BREAK ROOM - SEE 12/A4.4 FOR ENLARGED PLAN AND INTERIOR ELEVATIONS
- CONFERENCE ROOM - SEE 13/A4.4 FOR ENLARGED PLAN AND INTERIOR ELEVATIONS
- EXTERIOR MECHANICAL WELL - SEE 14/A4.5 FOR ENLARGED PLAN AND ELEVATIONS
- EXECUTIVE RESTROOM - SEE 15/A5.5 FOR ENLARGED PLAN AND INTERIOR ELEVATIONS
- ADA COMPLIANT HI-LOW ELECTRIC DRINKING FOUNTAIN - SEE PLUMBING AND ELEC. PLANS
- 1 1/2" MTL. FURRING CHANNELS @ 24" O.C. OVER CHU WALL w/ 3/8" GYP. BD. ON EXPOSED SIDE - FLUSH OUT GYP. ON METAL STUD WALLS AT ENDS
- 3/8" GYP. BD ONLY ON EXPOSED SIDE OF METAL STUDS WHEN UP AGAINST 8" CONC. TILT WALL - ENSURE R-13 MIN. BATT INSULATION IN ALL STUD CAVITIES
- GROUNDING ROD FOR PLANE (APPROX. LOCATION) - SEE ELECTRICAL DRAWINGS AND ACCOMMODATE ALL REQUIRED CODES

WALL LEGEND: NOTE: USE MOISTURE RESISTANT GREEN BOARD AT ALL WET LOCATIONS

- (1) HOUR RATED PER IBC SECTION 412.4.1. OPENINGS NOT REQUIRED TO BE PROTECTED PER IBC TABLE 105.8
- (2) HOUR RATED PER IBC SECTION 412.4.1. OPENINGS ARE REQUIRED TO BE (1) HOUR RATED
- TILT-UP CONCRETE PANEL WALL WITH 2 HOUR MIN. RATING PER IBC CHAPTER 1, TABLE 1211(2). 4" SOLID CONCRETE, ITEM 4-11, (3.0") MIN. FINISHED THICKNESS, FACE TO FACE - A 2 HR RATING. WE ACTUALLY HAVE AN 8.0" THICKNESS, FACE TO FACE - OK - SEE BUILDING SECTIONS ON A3 SHEETS, STRUCTURAL DRAWINGS AND 14/A5.1
- TILT-UP CONCRETE PANEL WALL - SEE BUILDING SECTIONS ON A3 SHEETS AND STRUCTURAL DRAWINGS
- TILT-UP CONCRETE PANEL WALL WITH 1 HOUR MIN. RATING PER IBC CHAPTER 1, TABLE 1211(2). 4" SOLID CONCRETE, ITEM 4-11, (3.0") MIN. FINISHED THICKNESS, FACE TO FACE - A 2 HR RATING. WE ACTUALLY HAVE AN 8.0" THICKNESS, FACE TO FACE - OK - SEE BUILDING SECTIONS ON A3 SHEETS, STRUCTURAL DRAWINGS AND 14/A5.1
- STOREFRONT GLAZING SYSTEM - SEE EXTERIOR ELEVATIONS & WINDOW FRAMES ON SHEET A6.5
- 8" METAL STUD EXTERIOR WALL WITH 3/8" GYP. BD. ON INTERIOR SIDE AND EXTERIOR GRADE FLYWOOD SHEATHING, RIGID INSULATION WEATHER BARRIER, AND EXTERIOR FINISHES PER EXTERIOR ELEVATIONS AND SECTIONS, PROVIDE R-25 INSULATION IN ALL STUD CAVITIES.
- 3 5/8" METAL STUD WALL WITH 5/8" GYP. BD. BOTH SIDES TO 6" ABOVE CEILING (OR DECK ABOVE @ OPEN AREAS). PROVIDE ACOUSTIC INSULATION IN ALL STUD CAVITIES - SEE DETAIL 43/A5.3
- 3 5/8" METAL STUD WALL WITH 5/8" GYP. BD. BOTH SIDES TO 6" ABOVE CEILING (OR DECK ABOVE IN OPEN AREAS) - SEE DETAIL 43/A5.3
- 1 HR RATED WALL PER UL #446 - MIN. 3-5/8" WIDE METAL STUDS WITH 5/8" GYP. BD. BOTH SIDES TO DECKING ABOVE PROVIDE ACOUSTICAL INSULATION IN ALL STUD CAVITIES - SEE DETAIL 44/A5.3 AND 129/A5.12
- MEDIUM WEIGHT TWO WEB 8X8X16 CHU WALL. SOLID GROUT ALL CELLS BELOW FINISH FLOOR LEVEL AND ALL CELLS CONTAINING REINFORCING PER STRUCTURAL DRAWINGS. AT EXTERIOR WALL LOCATIONS - FILL ALL OTHER CELLS ABOVE FINISH FLOOR AND BELOW ROOF DECKING SOLID WITH POLYURETHANE FOAMED IN PLACE INSULATION (MIN. R-VALUE OF 3.84)
- MEDIUM WEIGHT TWO WEB 8X8X16 1 HR RATED CHU WALL (PER UL #406 - SEE 130/A5.12). SOLID GROUT ALL CELLS BELOW FINISH FLOOR LEVEL AND ALL CELLS CONTAINING REINFORCING PER STRUCTURAL DRAWINGS. AT EXTERIOR WALL LOCATIONS - FILL ALL OTHER CELLS ABOVE FINISH FLOOR AND BELOW ROOF DECKING SOLID WITH POLYURETHANE FOAMED IN PLACE INSULATION (MIN. R-VALUE OF 3.84)

Larson Associates Architects, Inc.
3807 North 24th Street, Suite 100
Phoenix, AZ 85016
602.955.9929 602.954.4790 FAX
design@larson-architects.com

Larson

TY JENKINS HANGAR
16061 NORTH 81ST STREET
SCOTTSDALE, AZ
APN: 215-48-054

EXPIRES: 6/30/2024

EXPIRES: 6/30/2027

Drawing Name:

SECOND FLOOR PLAN

Revisions

CITY COMMENTS

11/16/2018

Date: 11/6/2020

Project Number:

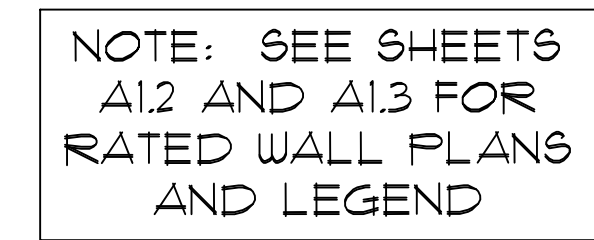
17-029

Drawing No:

A1.1a

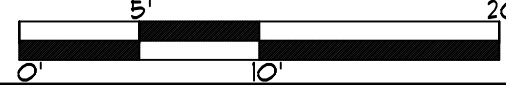
659-PA-2024

659-PA-2024



SCALE: 1/8"=1'-0"

GRAPHIC SCALE 1/8"=1'-0"



(2) HOUR RATED PER IBC SECTION 421.4.1
OPENINGS NOT REQUIRED TO BE PROTECTED PER IBC TABLE 105.8

(2)

TILT-UP CONCRETE PANEL WALL WITH 2 HOUR MIN. RATING PER IBC CHAPTER 7, TABLE 7211(2), #4 SOLID CONCRETE, ITEM 4-11, (5.0" MIN. FINISHED THICKNESS, FACE TO FACE = A 2 HR RATING; WE ACTUALLY HAVE AN 8.0" THICKNESS, FACE TO FACE = OK) - SEE BUILDING SECTIONS ON A3 SHEETS, STRUCTURAL DRAWINGS AND 14/A5.1

(2)

TILT-UP CONCRETE PANEL WALL - SEE BUILDING SECTIONS ON A3 SHEETS AND STRUCTURAL DRAWINGS

(1) HOUR RATED PER IBC SECTION 421.4.2
OPENINGS ARE REQUIRED TO BE (1) HOUR RATED

(3)

TILT-UP CONCRETE PANEL WALL WITH 1 HOUR MIN. RATING PER IBC CHAPTER 7, TABLE 7211(2), #4 SOLID CONCRETE, ITEM 4-11, (5.0" MIN. FINISHED THICKNESS, FACE TO FACE = A 2 HR RATING; WE ACTUALLY HAVE AN 8.0" THICKNESS, FACE TO FACE = OK) - SEE BUILDING SECTIONS ON A3 SHEETS, STRUCTURAL DRAWINGS AND 14/A5.1

(4)

STOREFRONT GLAZING SYSTEM - SEE EXTERIOR ELEVATIONS & WINDOW FRAMES ON SHEET A6.5

(5)

8" METAL STUD EXTERIOR WALL WITH 3" GYP. BD. ON INTERIOR SIDE AND EXTERIOR GRADE PLYWOOD SHEATHING, RIGID INSULATION, WEATHER BARRIER, AND EXTERIOR FINISHES PER EXTERIOR ELEVATIONS, AND SECTIONS, PROVIDE R-25 INSULATION IN ALL STUD CAVITIES

(6)

3 5/8" METAL STUD WALL WITH 5/8" GYP. BD. BOTH SIDES TO 6" ABOVE CEILING (OR DECK ABOVE IN OPEN AREAS), PROVIDE ACOUSTIC INSULATION IN ALL STUD CAVITIES - SEE DETAIL 43/A5.3

(7)

3 5/8" METAL STUD WALL WITH 5/8" GYP. BD. BOTH SIDES TO 6" ABOVE CEILING (OR DECK ABOVE IN OPEN AREAS) - SEE 42/A5.3

(8)

1 HR RATED WALL PER UL 1446.5 - MIN. 3-5/8" DEEP METAL STUDS WITH 5/8" GYP. BD. BOTH SIDES TO PECKING ABOVE - PROVIDE ACOUSTIC INSULATION IN ALL STUD CAVITIES - SEE DETAIL 44/A5.3 AND 129/A5.12

(9)

MEDIUM WEIGHT TWO WEB 8X8X16 CMU WALL, SOLID GROUT ALL CELLS & BELOW FINISH FLOOR LEVEL, AND ALL CELLS CONTAINING REINFORCING PER STRUCTURAL DRAWINGS, AT EXTERIOR WALL LOCATIONS - FILL ALL OTHER CELLS ABOVE FINISH FLOOR AND BELOW ROOF DECKING SOLID WITH POLYURETHANE FOAMED IN PLACE INSULATION (MIN. R-VALUE OF 3.54)

(10)

MEDIUM WEIGHT TWO WEB 8X8X16 1 HR RATED CMU WALL (PER UL #906 - SEE 130/A5.12) SOLID GROUT ALL CELLS & BELOW FINISH FLOOR LEVEL, AND ALL CELLS CONTAINING REINFORCING PER STRUCTURAL DRAWINGS, AT EXTERIOR WALL LOCATIONS - FILL ALL OTHER CELLS ABOVE FINISH FLOOR AND BELOW ROOF DECKING SOLID WITH POLYURETHANE FOAMED IN PLACE INSULATION (MIN. R-VALUE OF 3.54)

NOTE: USE MOISTURE RESISTANT GREEN BOARD
AT ALL WET LOCATIONS

(2) HOUR RATED PER IBC SECTION 412.4.1
OPENINGS NOT REQUIRED TO BE PROTECTED
PER IFC, TABLE 708.8

TILT-UP CONCRETE PANEL WALL - SEE BUILDING SECTIONS
ON A3 SHEETS AND STRUCTURAL DRAWINGS

(1) HOUR RATED PER IBC SECTION 412.4.6.2
OPENINGS ARE REQUIRED TO BE (1) HOUR RATED

STOREFRONT GLAZING SYSTEM - SEE EXTERIOR ELEVATIONS & WINDOW FRAMES ON SHEET A6.5

8" METAL STUD EXTERIOR WALL WITH 3/8" GYP. BD. ON INTERIOR SIDE AND EXTERIOR GRADE PLYWOOD SHEATHING, RIGID INSULATION, WEATHER BARRIER, AND EXTERIOR FINISHES PER EXTERIOR ELEVATIONS AND SECTIONS, PROVIDE R-25 INSULATION IN ALL STUD CAVITIES.

3 5/8" METAL STUD WALL WITH 5/8" GYP. BD. BOTH SIDES
TO 6" ABOVE CEILING (OR DECK ABOVE • OPEN AREAS).
PROVIDE ACOUSTIC INSULATION IN ALL STUD CAVITIES- SEE
DETAIL 43/A53

1 3 5/8" METAL STUD WALL WITH 5/8" GYP. BD. BOTH SIDES
TO 6" ABOVE CEILING (OR DECK ABOVE IN OPEN AREAS) -
SEE 42/A5.3

1 HR RATED WALL PER U.L. #465 - MIN. 3-5/8" WIDE METAL STUDS WITH 5/8" GYP. BD. BOTH SIDES TO DECKING ABOVE PROVIDE ACOUSTICAL INSULATION IN ALL STUD CAVITIES - SEE DETAIL 44/A5.3 AND 129/A5.12

MEDIUM WEIGHT TWO WEB 8X8X16 CMU WALL. SOLID GROUT
ALL CELLS BELOW FINISH FLOOR LEVEL AND ALL CELLS
CONTAINING REINFORCING PER STRUCTURAL DRAWINGS. AT
EXTERIOR WALL LOCATIONS - FILL ALL OTHER CELLS
ABOVE FINISH FLOOR AND BELOW ROOF DECKING SOLID
WITH POLYURETHANE FOAMED IN PLACE INSULATION (MIN.
R-VALUE OF 3.54)

MEDIUM WEIGHT TWO WEB 8X8X16 1 HR RATED CMU WALL (PER U.L. #906 - SEE 130/AS12). SOLID GROUT ALL CELLS BELOW FINISH FLOOR LEVEL AND ALL CELLS CONTAINING REINFORCING BAR STRUCTURES. FILL ALL EXTERIOR WALL LOCATIONS - FILL ALL OTHER CELLS ABOVE FINISH FLOOR AND BELOW ROOF DECKING SOLID WITH POLYURETHANE FOAMED IN PLACE INSULATION (MIN. R-VALUE OF 3.54)

Larson Associates Architects, Inc.
3807 North 24th Street, Suite 100
Phoenix, AZ 85016
602.955.9929 602.954.4790 FAX
design@larson-architects.com

Larson

ITY JENKINS HANGAR
16061 NORTH 81ST STREET
SCOTTSDALE, AZ
APN: 215-48-054

EXPIRES: 6/30/2024

EXPIRES: 6/30/2027

Drawing Name:
SECOND FLOOR
PLAN

Revisions
1 CITY COMMENTS
11/16/2018

Date: 11/6/2020

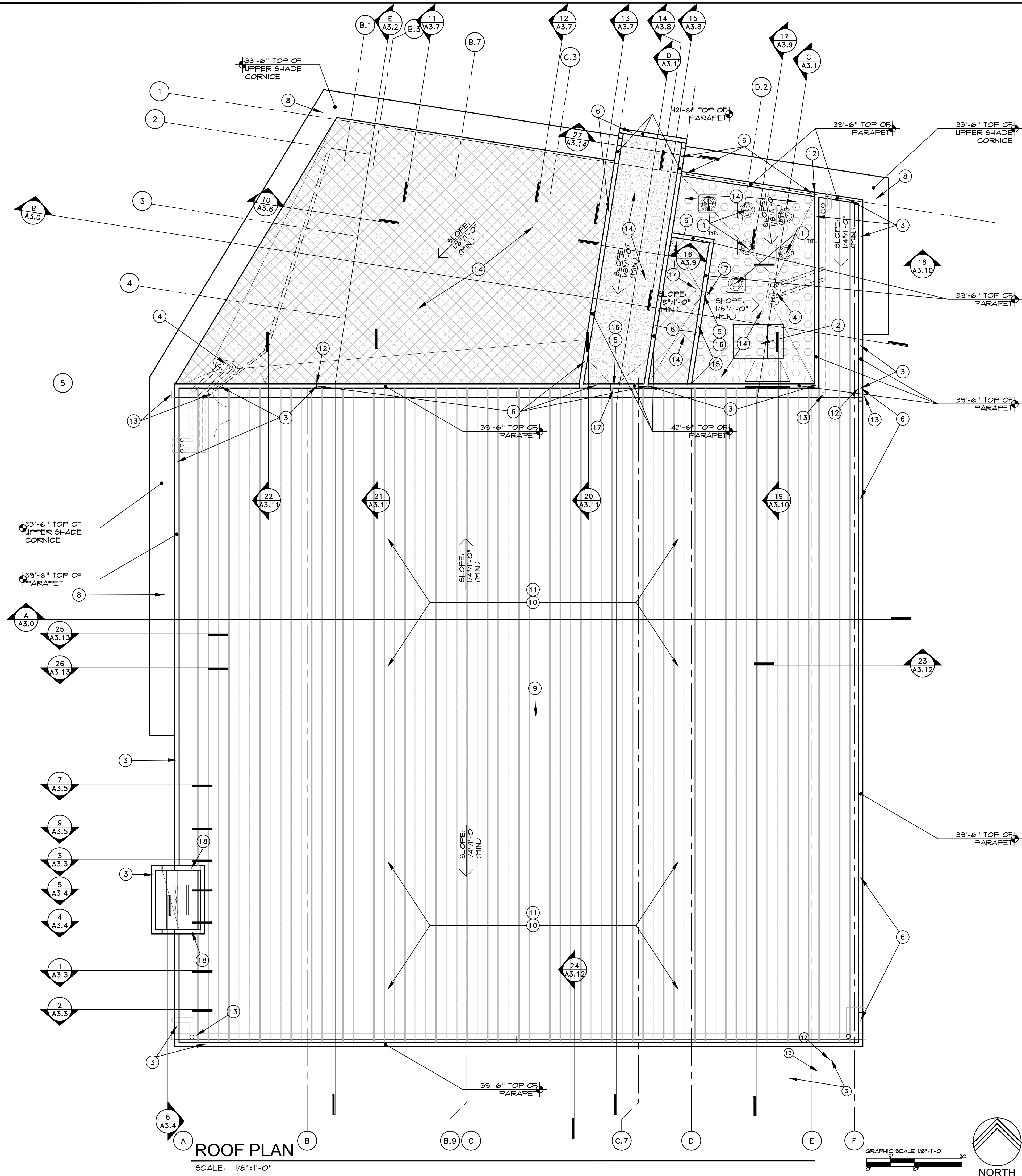
Project Number:
17-029

Drawing No:

A1.1b

450 DA 000

659-PA-2024



ROOF PLAN KEYNOTES

- 1 ROOF TOP MECHANICAL UNITS INSTALLED PER MANUFACTURE STANDARDS- SEE MECHANICAL PLANS
- 2 STACKED EVAPORATIVE COOLERS - UPPER UNIT ON STEEL MECH. PLATFORM - SEE STRUCTURAL
- 3 TILT-UP CONC. PANEL PARAPET- SEE WALL SECTIONS AND PARAPET CAP DETAIL 15/A5.1
- 4 ROOF DRAIN & OVERFLOW DRAIN -SEE 1, 5, 16/A5.0 - SEE PLUMBING DRAWINGS FOR DRAIN RUNS - RIM OF OVERFLOW DRAINS TO BE 2" ABOVE RIM OF ROOF DRAIN - ALSO SEE METAL BUILDING DRAWINGS
- 5 THRU-WALL SCUPPER - SEE DETAIL 19/A5.1
- 6 METAL STUD AND STUCCO PORTION OF PARAPET- SEE BUILDING AND WALL SECTIONS ON A3 SHEETS AND PARAPET CAP DETAILS 18/A5.1 AND STRUCTURAL DRAWINGS
- 7 HOSE BIBS ON ROOF TOP - SEE PLUMBING DRAWINGS
- 8 SUN SHADE CORNICE - SEE WALL SECTIONS ON A3 SHEETS, ELEVATIONS ON A2 SHEETS, AND DETAILS
- 9 CENTER RIDGE OF ROOF - SEE BUILDING SECTIONS A3 SHEETS
- 10 METAL BUILDING ROOF SYSTEM - WALL CLOSURE ATTACHMENTS ON METAL BUILDING SHOP DRAWINGS - INSTALL CRICKETING AS REQUIRED
- 11 WALK PAD& PATH FOR METAL BUILDING ROOF SYSTEM PER MANUFACTURER'S RECOMMENDATIONS
- 12 CONCRETE TILT SLAB CAP TO MTL STUD AND STUCCO CAP CONNECTION - SEE 20/A5.1
- 13 METAL BUILDING GUTTER SYSTEM (WITH THRU-WALL OVERFLOW SCUPPERS AT ENDS PER DETAIL 3/A5.0) - RUN TO ROOF DRAINS - SEE METAL BUILDING AND PLUMBING DRAWINGS
- 14 FOAM ROOFING MATERIAL OVER METAL DECKING A MIN. 2.5" THICK OVER TOP FLUTES OF DECKING - SLOPED A MIN. OF 1/8"PER FOOT TO DRAIN (INSTALL CRICKETING AS REQUIRED). (FOAM SHALL BE TESTED AND PASS U.L. 1256, OR PROVIDE 1" DECK OF WOOD OR EXTERIOR GRADE GYP. BD. OVER METAL DECK)
- 15 LOCATION OF THRU-WALL ACCESS DOOR - SEE 2ND FLOOR PLAN
- 16 CONCRETE SPLASH BLOCK OR OTHER ROOFING PROTECTION AS RECOMMENDED BY ROOFING MANUFACTURER AT BOTTOM OF DOWNSPOUT FROM THRU-WALL SCUPPER ABOVE
- 17 METAL DOWNSPOUT FROM THRU-WALL SCUPPER ABOVE - DOWN TO CONCRETE SPLASH BLOCK OR METAL ROOFING BELOW
- 18 OPEN BELOW TO ALLOW ROOF DRAINAGE - SEE 4 & 5/A3.4

ROOF DATA:

MECHANICAL SCREENING IS FULLY ESTABLISHED BY THE PARAPETS.

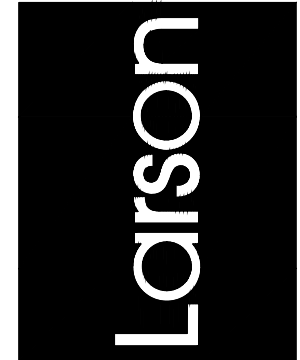
HANGAR METAL ROOF AREA:
11,660 SF.
OFFICE FOAMED ROOF AREA:
3,015 SF.
TOTAL ROOF AREA:
14,235 SF.

NOTE: SEE DETAIL 4/A5.0
FOR ALL THROUGH ROOF
PIPE PENETRATIONS

NOTE: PROVIDE ROOFING CRICKETS AT MECHANICAL
UNITS AND OTHER ROOF MOUNTED EQUIPMENTS PER THE
METAL BUILDING MANUFACTURER'S PRINTED INSTRUCTIONS.

NOTE: G.C. TO ENSURE THAT ALL BUILDING SYSTEMS
FROM ALL TRADES MUST BE CLEAN, NEAT, COORDINATED
AND ORGANIZED IN A CRISP AND ORDERLY FASHION.
ALL EXPOSED CONDUIT, PIPING, DUCTWORK, STRUCTURE,
LIGHTING, ETC. TO BE NEAT AND ORDERLY.

Larson Associates Architects, Inc.
3807 North 24th Street, Suite 100
Phoenix, AZ 85016
602.955.9929 602.954.4790 FAX
design@larson-architects.com



TY JENKINS HANGAR
16061 NORTH 81ST STREET
SCOTTSDALE, AZ
APN: 215-48-054



Drawing Name:
ROOF
PLAN

Revisions
CITY COMMENTS
11/16/2018

Date: 11/6/2020

Project Number:
17-029

Drawing No:

A1.6

659-PA-2024