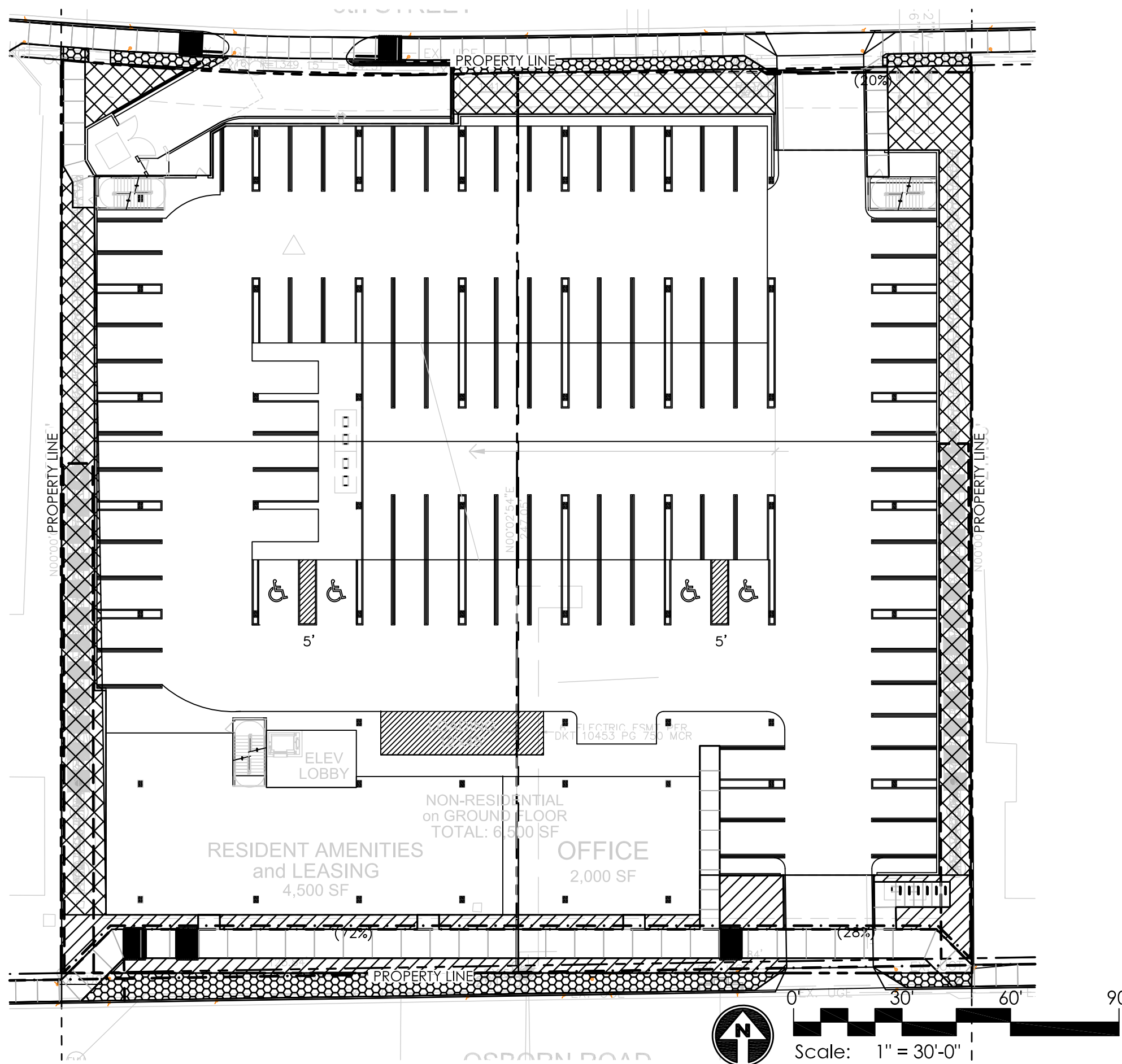


Open Space Plan



(see zoning ordinance for zoning district requirements)

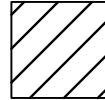
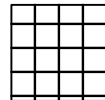

PROJECT DATA ZONING:

CURRENT ZONING: C-3 DO
 REQUESTED ZONING: D/DMU-2 DO

NET LOT AREA: 62,810 sq. ft.
 BUILDING HEIGHT: 59'

MAXIMUM BUILDING HEIGHT: 66'
 - PROPOSED BUILDING HEIGHT: 59'

OPEN SPACE PROVIDED: 9,162 s.f.

-  DENOTES FRONT OPEN SPACE
2,017 sq. ft.
-  DENOTES OPEN SPACE OTHER THAN FRONTAL
OPEN SPACE
5,932 sq. ft. total
-  OPEN SPACE RIGHT OF WAY: 1,226 sq. ft.

NOTE: NO PARKING LOT LANDSCAPE AS PARKING IS UNDER ROOF.

