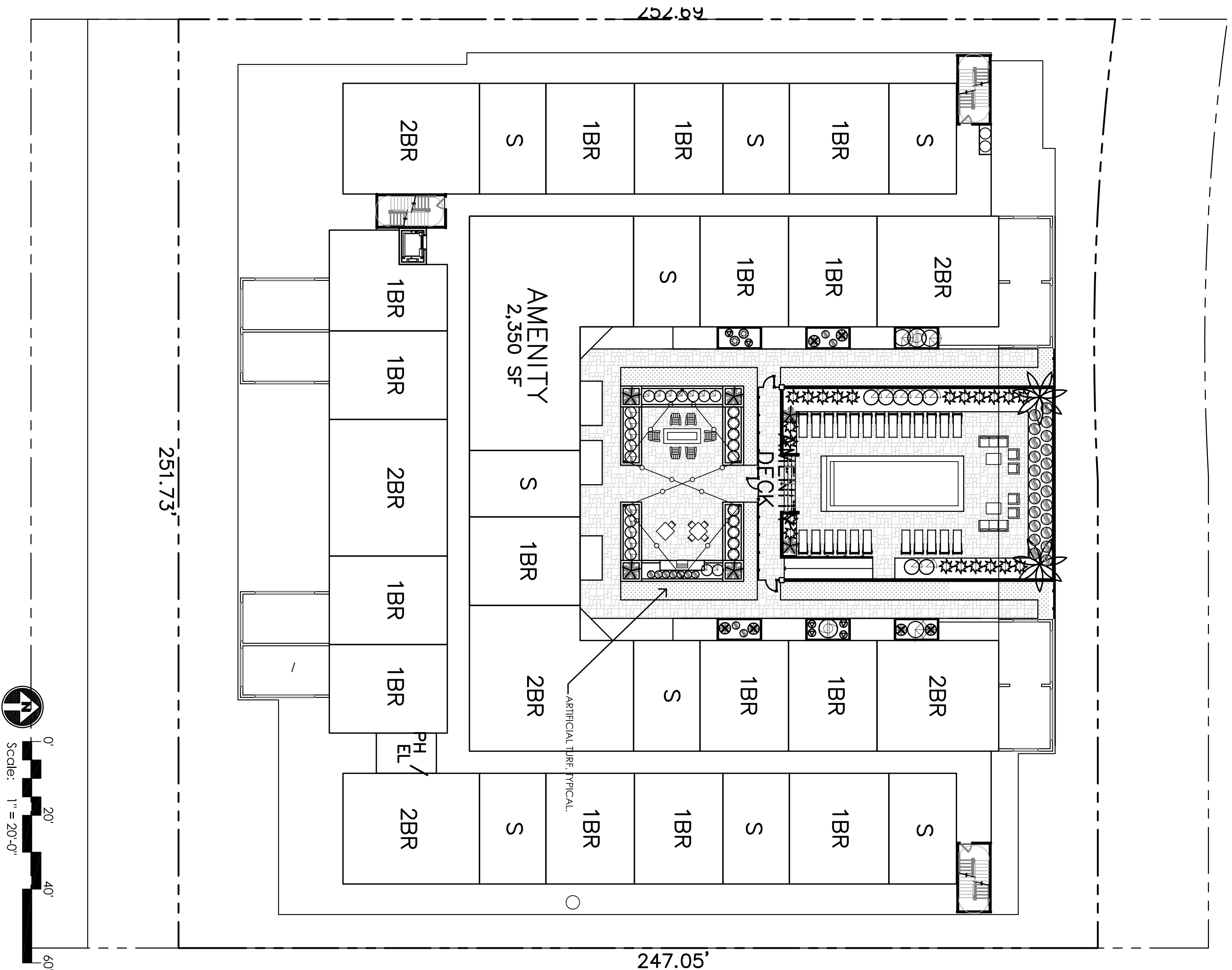


Magnolia on Osborn

Scottsdale, Arizona

Planting Plan Second Floor



PLANT MATERIALS LEGEND

Sym.	Plant Name	Size	Qty	Remarks
Trees				
	<i>Chamaecyparis humilis</i>	48" box	6	ADWR
	Mediteranean Fan Palm	48 box, 50" x 20" High, 6.0' x 7.0' Wide		
	<i>Euphorbia elano</i>	48" box, 50" x 11" High, 7.0' x 9.0' Wide, 3.0' x 3.5' Caliper	3	
	Edgus Ebony			
	<i>Parkinsonia prucea</i>	48" box	7	ADWR
	Polo Beg	48 box, 10.0' x 12.0' High, 10.0' x 12.0' Wide, 3.0 x 4.0 Caliper		
	<i>Phoenix dactylopera 'Medford'</i>	12'	2	ADWR
	Medjool Date Palm			
	<i>Sophora secundiflora</i>	36" box	3	
	Texas Mountain Laurel	36 box, 50" x 50" High, 3.0' x 4.0' Wide, 1.5' x 2.0' Caliper		
	<i>Washingtonia robusta</i>	12'	2	
	Mexican Fan Palm			
Shrubs				
	<i>Asparagus densiflorus 'Myers'</i>	5 gal.	6	ADWR
	Foxtail Fern			
	<i>Bouteloua gracilis 'Blonde Ambition'</i>	1 gal.	2	ADWR
	Blonde Ambition Blue Grama			
	<i>Callistemon viminalis 'Little John'</i>	5 gal.	2	ADWR
	Bottlebrush			
	<i>Convolvulus cneorum</i>	1 gal.	7	ADWR
	Bush Morning Glory			
	<i>Dalea capitata</i>	1 gal.	10	ADWR
	Golden Dalea			
	<i>Dalea frutescens</i>	5 gal.	15	ADWR
	Black Dalea			
	<i>Eremophila hyssophifera 'Blue Bell'</i>	5 gal.	11	ADWR
	Blue Bell			
	<i>Euphorbia biglandulosa</i>	5 gal.	26	ADWR
	<i>Euphorbia biglandulosa</i>	5 gal.	26	ADWR
	Gopher Plant			
	<i>Muhlenbergia rigida 'Nashville'</i>	5 gal.	6	ADWR
	Nashville Mully			
	Tecoma 'Sparky'	1 gal.	2	ADWR
	Spooky Tecoma			
	<i>Tecoma stans</i>	5 gal.	6	ADWR
	Yellow Bell			
	<i>Yucca filifera californica</i>	5 gal.	70	ADWR
	Arizona Rosewood			
Groundcovers				
	<i>Convolvulus sabatius</i>	1 gal.	3	ADWR
	Ground Morning Glory			
	<i>Eremophila glabra 'Mingens Gold'</i>	3 gal.	39	ADWR
	Outback Sunrise Ernu			
	<i>Glandularia pulchella</i>	1 gal.	46	ADWR
	Moss Verbena			
	<i>Lantana monticensis</i>	1 gal.	46	ADWR
	Purple Trilling Lantana			
	<i>Lantana monticensis 'White'</i>	1 gal.	25	ADWR
	White Lantana			
	<i>Lantana 'New Gold'</i>	1 gal.	11	ADWR
	New Gold Lantana			
	<i>Lantana monticensis 'Yellow Trilling'</i>	1 gal.	10	ADWR
	Yellow Trilling Lantana			
	<i>Rosmarinus officinalis 'Prostratus'</i>	1 gal.	9	ADWR
	Dwarf Rosemary			
Cacti				
	<i>Agave geminiflora</i>	5 gal.	7	ADWR
	Agave			
	<i>Hesperaloe parviflora-red</i>	5 gal.	11	ADWR
	Red Hesperaloe			
	<i>Hesperaloe parviflora-yellow</i>	5 gal.	29	ADWR
	Yellow Hesperaloe			

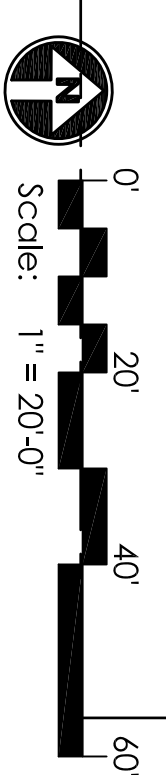
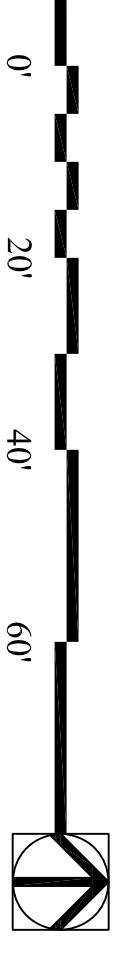
MASS PLANTING

SYNTHETIC TURF: 2,000 SQ. FT. (TUBE PER SPEC.)
 TIGERTURF EVERGLADE RESCUE PRO.
 1-800-464-0477. CONTRACTOR TO PROVIDE
 SAMPLE ON SITE FOR OWNER APPROVAL
 PRIOR TO PURCHASE OR INSTALL.

Sym. Description
 3/4" SCREENED DECOMPOSED GRANITE.
 ROCK PROS USA MAHOGANY, 2" THICK MINIMUM.

NOTES:

- THE CONTRACTOR SHALL INSTALL NDS ROOT BARRIER PANELS AVAILABLE IN 20 ROLLS (OR APPROVED EQUIV.) AT ALL TREES WITHIN 7'-0" FEET OF HARDSCAPE ELEMENTS INCLUDING (BUT NOT LIMITED TO) SIDEWALKS, ASPHALT, CONCRETE SLABS, / FOOTINGS AND STRUCTURES. INSTALL PER ROOT BARRIER DETAIL. CONTRACTOR SHALL SUBMIT SPECIFICATION SHEETS OF PROPOSED ROOT BARRIER PANELS TO THE LANDSCAPE ARCHITECT FOR APPROVAL PRIOR TO INSTALLATION.
- CONTRACTOR IS RESPONSIBLE FOR ALL SHIPPING / DELIVERY COSTS ASSOCIATED TO HAVE PLANT MATERIAL SHIPPED TO THE SITE FOR ANY OUT OF STATE MATERIALS. THIS INCLUDES, BUT IS NOT LIMITED TO, SATISFYING ALL DEPT. OF AGRICULTURE REQUIREMENTS ASSOCIATED WITH OBTAINING APPROVAL.
- LANDSCAPE ARCHITECT TO APPROVE FINAL GRADING. PLANTING SHALL NOT OCCUR UNTIL FINAL GRADING IS APPROVED.
- LOCATIONS OF PLANTS SHOWN ON DRAWING ARE APPROXIMATE. LANDSCAPE ARCHITECT TO FIELD APPROVE ALL FINAL LOCATIONS PRIOR TO INSTALLATION. LANDSCAPE CONTRACTOR HAS OPTION TO FLAG LOCATIONS OR PLACE CONTAINER MATERIAL.
- DUE TO SEASONAL AND/OR UNFORESEEN CONSTRAINTS SOME PLANT MATERIAL WILL POSSIBLY NOT BE AVAILABLE AT TIME OF INSTALLATION. LANDSCAPE CONTRACTOR TO SUBMIT LIST OF ANY NON-AVAILABLE MATERIAL TO LANDSCAPE ARCHITECT FOR REPLACEMENTS TO BE SELECTED.
- ALL PLANT MATERIAL IS TO BE RETAIL QUALITY.
- LANDSCAPE CONTRACTOR TO PROVIDE PICTURES OR SAMPLES OF ALL PLANT MATERIAL PRIOR TO INSTALLATION FOR APPROVAL.
- ALL PLANT MATERIAL SOURCED FROM OUTSIDE OF ARIZONA TO BE PROPERLY ACCLIMATED TO ARIZONA CLIMATE DEPENDING ON TIME OF YEAR OF INSTALLATION.
- ALL CACTI OR ACCENT MATERIAL WITH SHARP THORNS TO BE PLANTED A MINIMUM OF 3'-0" CLEAR FROM SIDEWALKS
- LANDSCAPE ARCHITECT RESERVES THE RIGHT TO REFUSE OR SEND BACK ANY PLANT MATERIAL THAT DOES NOT MEET QUALITY STANDARDS.



August 24, 2023

GREY | PICKETT

landscape architecture | community design

Copyright © 2007 by
 Greer | Pickett Professional Corp.
 DESIGN TO BE REUSED FOR CONSTRUCTION.