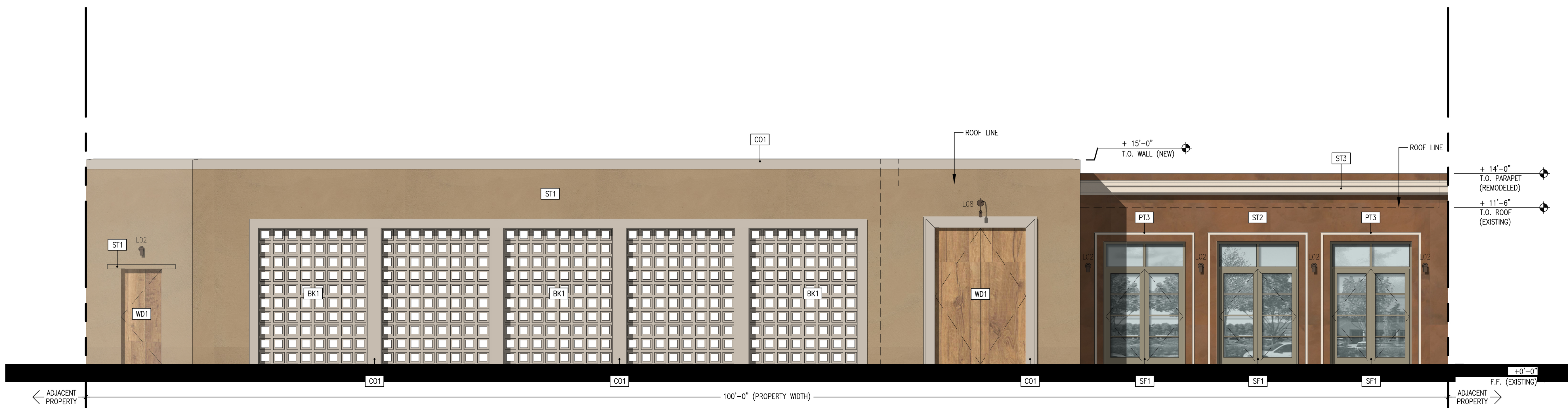


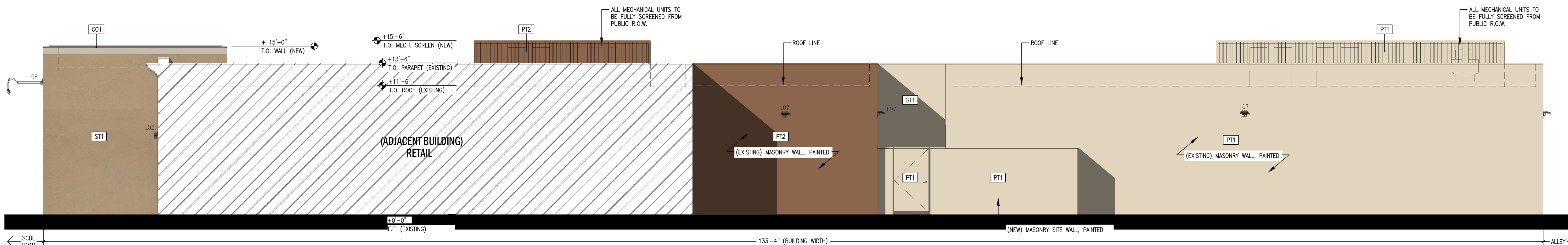
COLORS & MATERIALS

- ST1 STUCCO (COURTYARD)**
 MFG: OMEGA SYSTEMS- (OR EQUIVALENT)
 TYPE: 3 COAT STUCCO
 COLOR: MATCH DUNN EDWARDS - STONISH BEIGE - DEC716
 FINISH: MEDIUM TEXTURE
- ST2 STUCCO (NORTH BUILDING)**
 MFG: OMEGA SYSTEMS- (OR EQUIVALENT)
 TYPE: 3 COAT STUCCO
 COLOR: MATCH DUNN EDWARDS - RED ROOSTER - DEC459
 FINISH: MEDIUM TEXTURE
- ST3 STUCCO (ACCENT)**
 MFG: OMEGA SYSTEMS- (OR EQUIVALENT)
 TYPE: 3 COAT STUCCO
 COLOR: MATCH DUNN EDWARDS - COTTON CLUB - DET431
 FINISH: MEDIUM TEXTURE
- C01 PRECAST CONCRETE**
 COLOR: CONCRETE DESIGNS INC.
 TYPE: PRECAST CONCRETE
 COLOR: GRAY
 FINISH: ANTIQUE TEXTURE FINISH
- PT1 PAINT**
 MFG: DUNN EDWARDS
 TYPE: EXTERIOR PAINT ON EXISTING WALLS
 COLOR: SAND DOLLAR - DE6171
 FINISH: MATTE FINISH
- PT2 PAINT**
 MFG: DUNN EDWARDS
 TYPE: EXTERIOR PAINT ON EXISTING WALLS
 COLOR: RED ROOSTER - DET431
 FINISH: MATTE FINISH
- PT3 PAINT (ACCENT)**
 MFG: DUNN EDWARDS
 TYPE: EXTERIOR PAINT ON STUCCO WALLS
 COLOR: COTTON CLUB - DET431
 FINISH: MATTE FINISH
- BK1 BREEZE BLOCK**
 MFG: TESSELLE
 TYPE: CONCRETE BREEZE BLOCK - QUAD PATTERN
 COLOR: GREY
 GROUT: GREY
- WD1 WOOD**
 MFG: LOCAL WOOD SUPPLIER - HERITAGE PINE
 TYPE: EXTERIOR SIDING - EXTERIOR TRANSPARENT STAIN
 COLOR: BROWN OAK
- SF1 STOREFRONT**
 MFG: WESTERN WINDOWS (OR SIMILAR)
 TYPE: SIMULATED STEEL WINDOWS
 COLOR: BISON BEIGE
 GLAZING: CLEAR VIEW



EXTERIOR ELEVATION - EAST

SCALE: 1/4" = 1'-0"



EXTERIOR ELEVATION - NORTH

SCALE: 1/4" = 1'-0"

4242 SCOTTSDALE RD.

BUILDING REMODEL, EXPANSION, & ADAPTIVE REUSE
 SCOTTSDALE, ARIZONA
 FOR: JOCQUE CONCEPTS

DESIGN REVIEW BUILDING ELEVATIONS V.02D

CASE #: 574-PA-2024
 2024 . 11 . 08
 REVISED: 2025 . 02 . 22
 REVISED: 2025 . 05 . 28