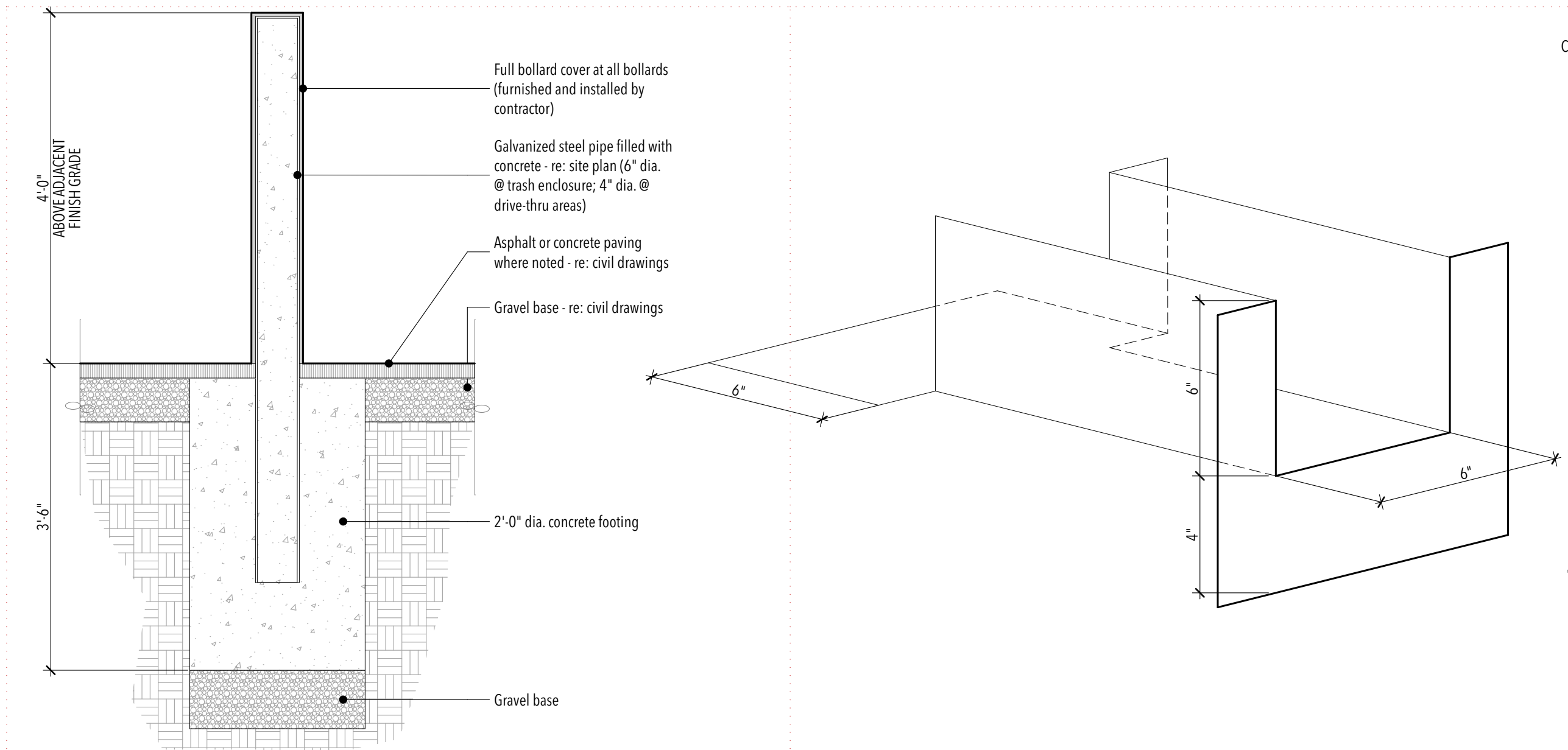


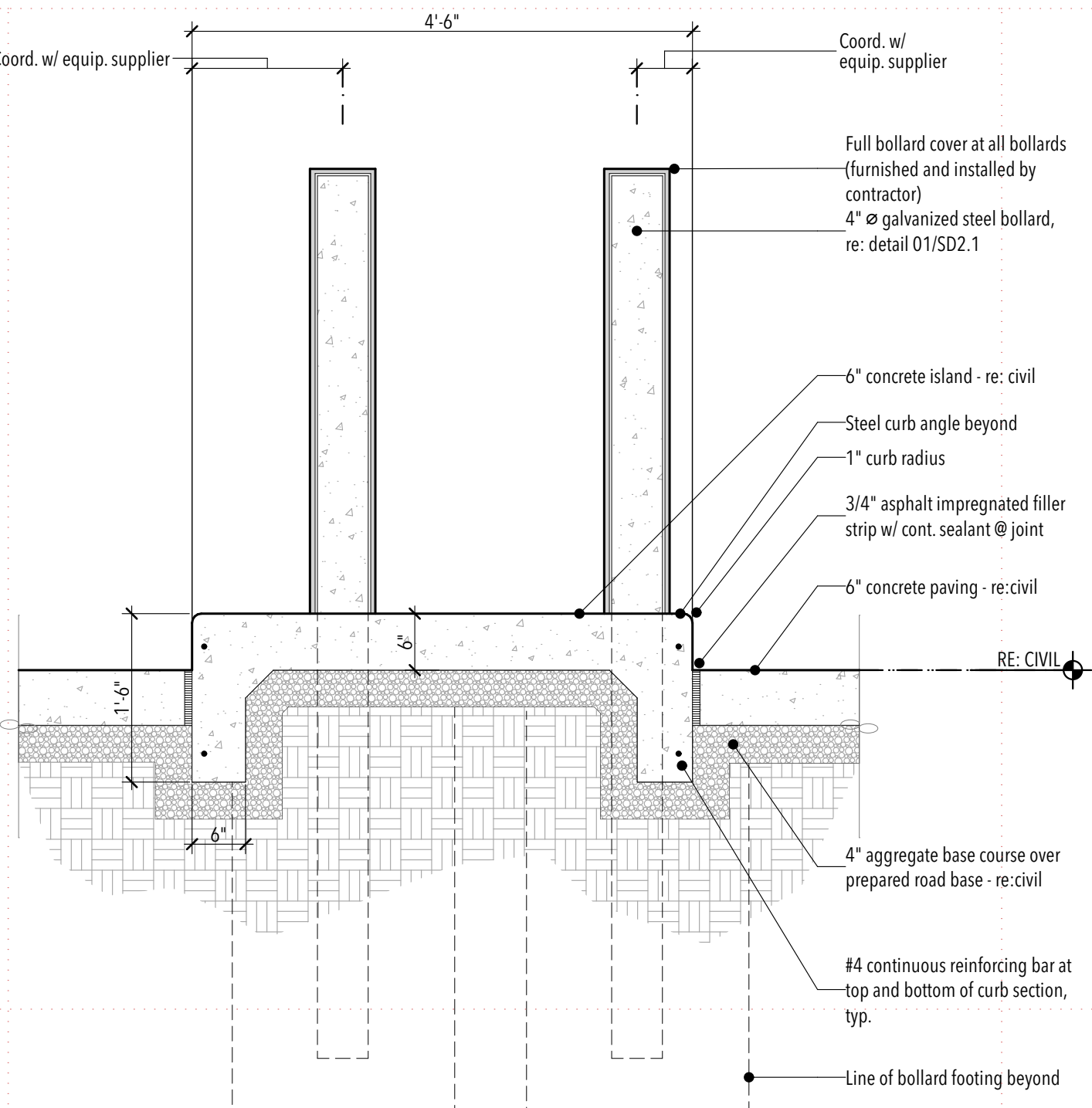
- GENERAL EXTERIOR ELEVATION NOTES:
- A. All building signage shall be submitted by the Signage Contractor as a deferred submittal to the City for review.
  - B. All utility meters and equipment on the exterior face of the building shall be painted to match color as selected by the Architect.
  - C. All steel in contact with dissimilar metals shall be hot dipped galvanized, or zinc rich primed.
  - D. Locate ACM panel joints as shown on exterior elevations. Align all ACM panel joints where possible - coordinate with Architect.
  - E. All mechanical rooftop units and equipment shall be screened from view of the public/private streets.

EXTERIOR MATERIALS LEGEND:			
ID	MATERIAL	MANUFACTURER	COLOR/NOTES
ROOFING			
R01	Standing Seam Metal Roofing	Re: Specifications	Custom Color: Match 'MP01' ACM Panel System Color
CONCRETE			
C01	Cast In Place Concrete	Re: Specifications	Re: Specifications
C02	Precast Concrete Belt Course	Re: Specifications	Honed Finish; Match Architect's color Sample
MASONRY			
M01	Brick Veneer	Interstate Brick	Size: 2 1/4" Normans; Color: Platinum; Finish: Matte; Brick Coursing: 1/3 running bond; Mortar Joints: Raked bed joint, Flush tooled head joints
M02	CMU	Cabco	Color: Dark Charcoal NW; Split Face; Running Bond
METAL PANEL			
MP01	ACM Panel System	Alpolic	Color: DBR DRK Bronze Anodized Nonstock
MP02	ACM Panel System	Alpolic	Color: MCV White Stock
METAL COPING			
MC01	ACM Coping Cap	Re: Specifications	Custom Color: Match 'MP01' ACM Panel System Color
MC02	Pre-Finished Metal Coping Cap	Re: Specifications	Custom Color: Match 'MP01' ACM Panel System Color
METAL TRIM			
MT01	Pre-Finished Aluminum Brake Metal Trim	-	Custom Color: Match 'MP01' ACM Panel System Color
RESIN PANEL			
RP01	Exterior Resin Panel	3Form	Custom Color: LID - 1074022
RP02	Exterior Resin Panel	3Form	Custom Color: LID - 1074023



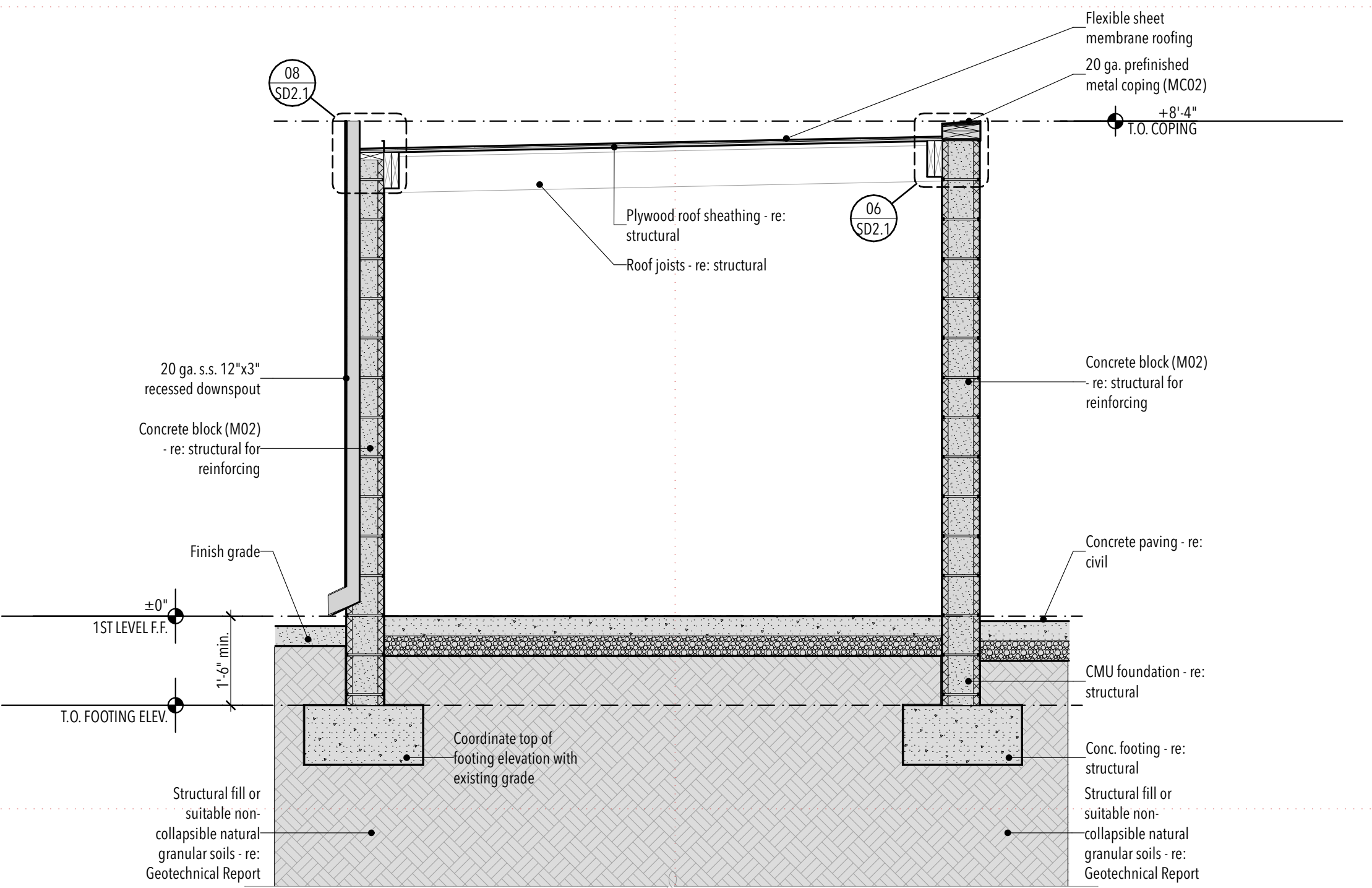
PIPE BOLLARD DETAIL

01 3/4" = 1'-0"



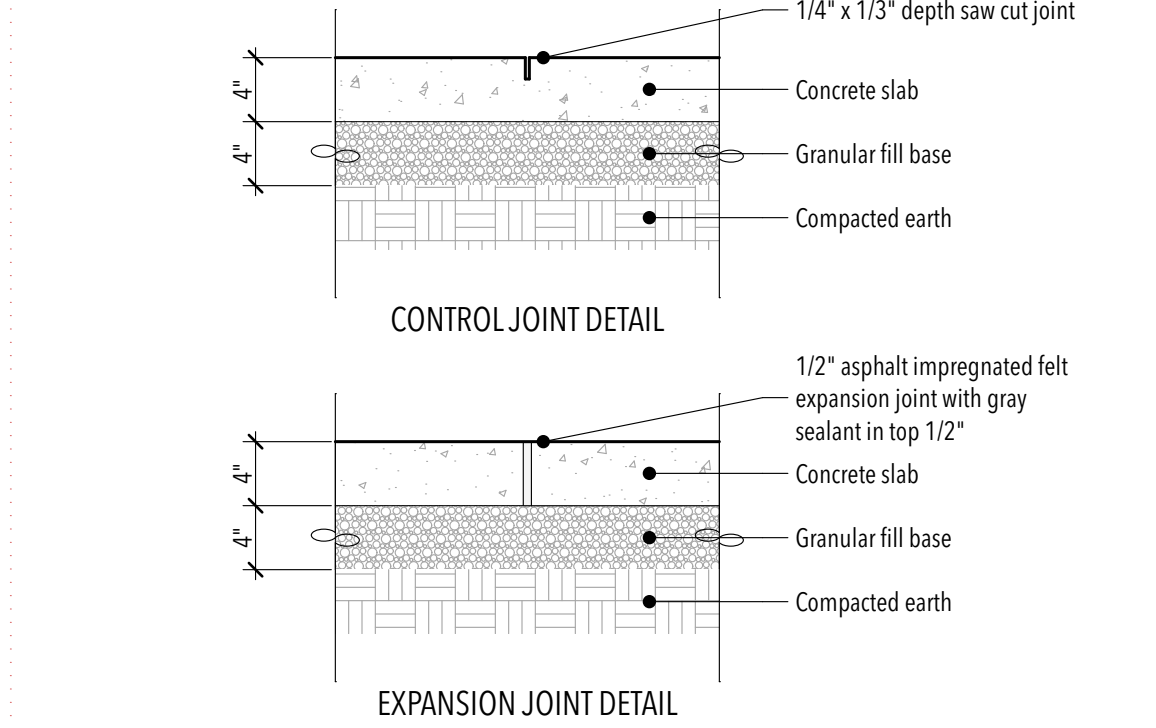
PIPE BOLLARD DETAIL

03 3/4" = 1'-0"



ENCLOSURE BUILDING SECTION

04 1/2" = 1'-0"

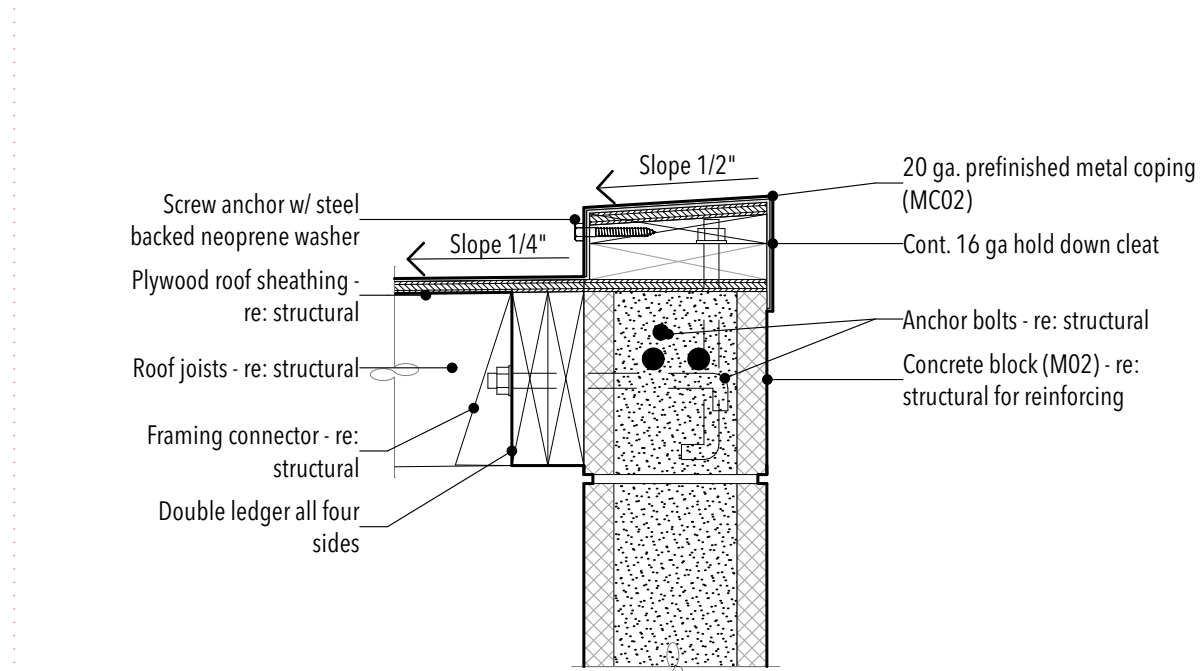


CONCRETE JOINT DETAIL

05 1" = 1'-0"

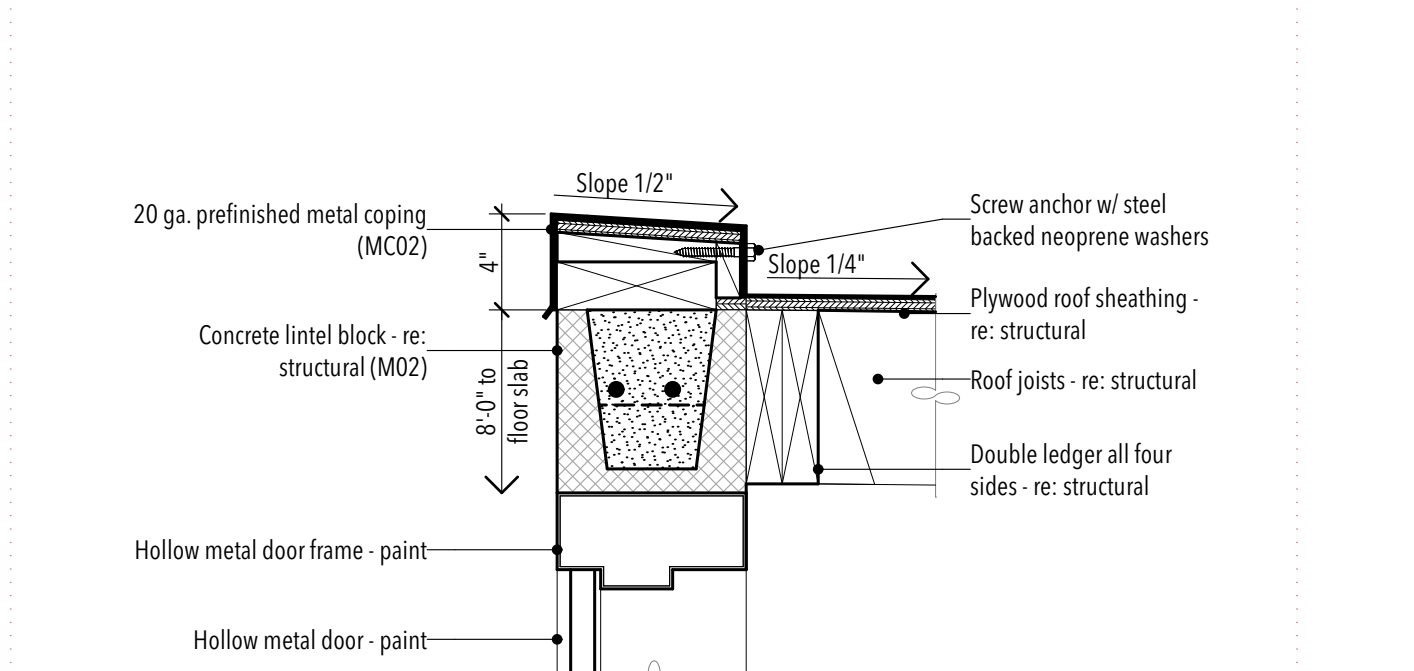
SCUPPER DETAIL

02 3" = 1'-0"



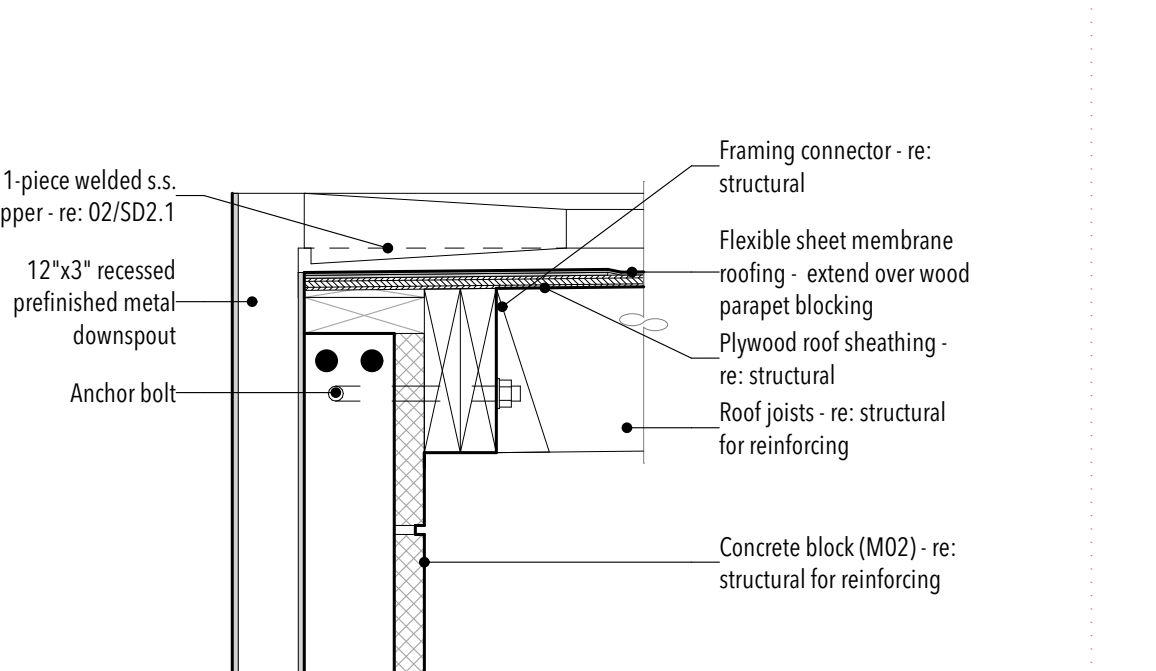
TYPICAL COPING @ TRASH ENCLOSURE

06 1 1/2" = 1'-0"



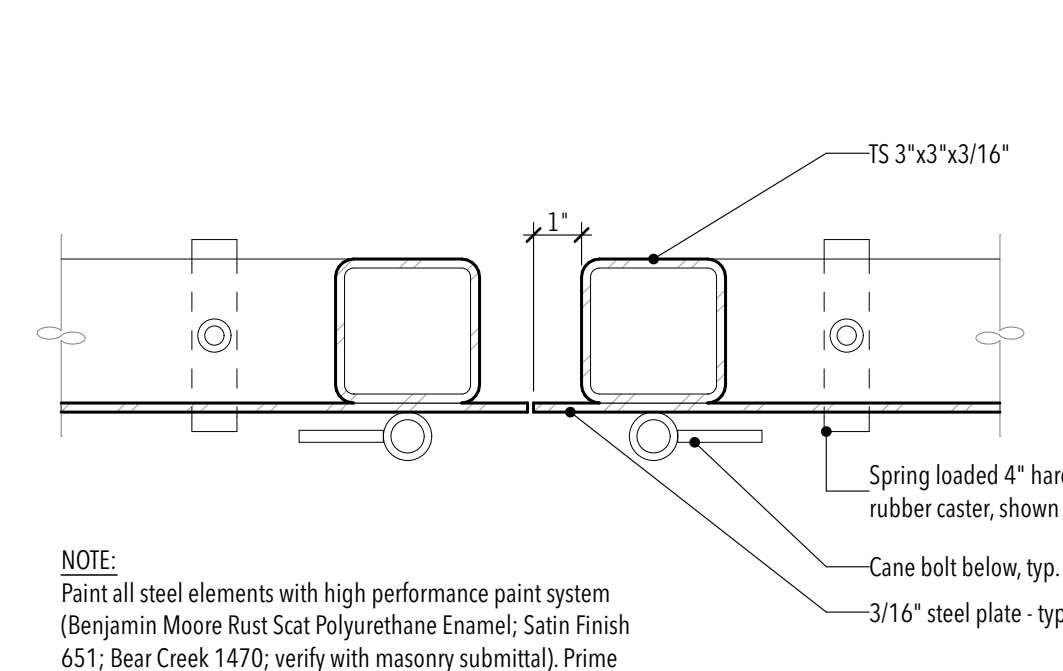
DETAIL @ HM DOOR

07 1 1/2" = 1'-0"



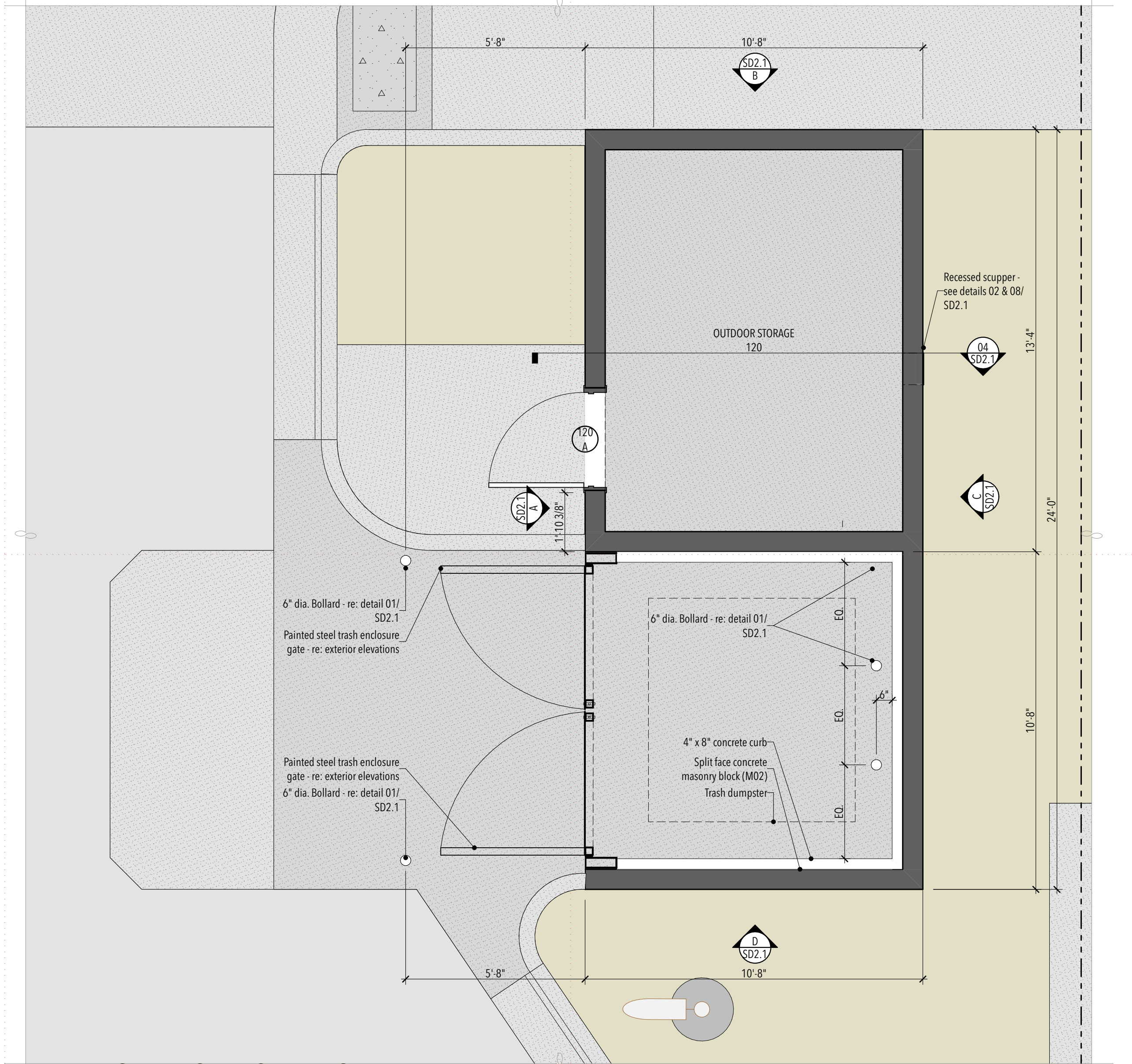
DETAIL @ SCUPPER & DOWN SPOUT

08 1 1/2" = 1'-0"



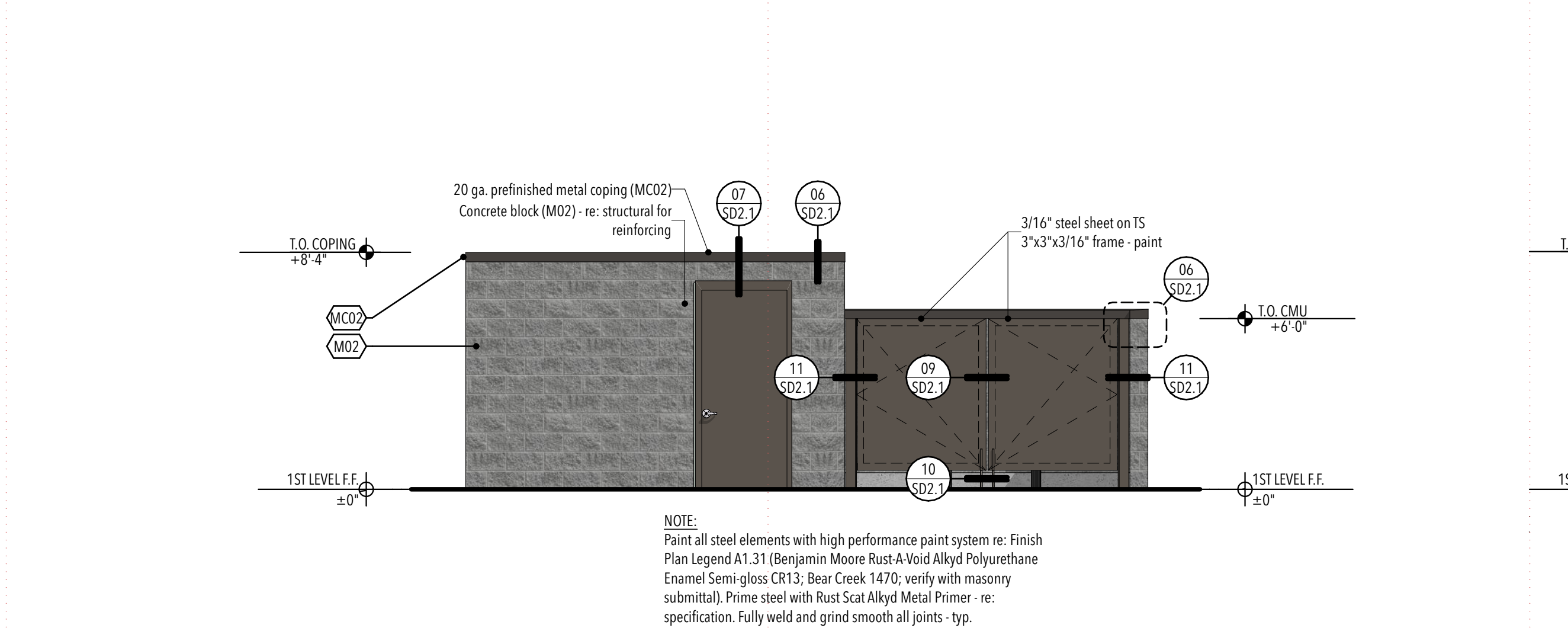
GATE DOOR DETAIL

09 3" = 1'-0"



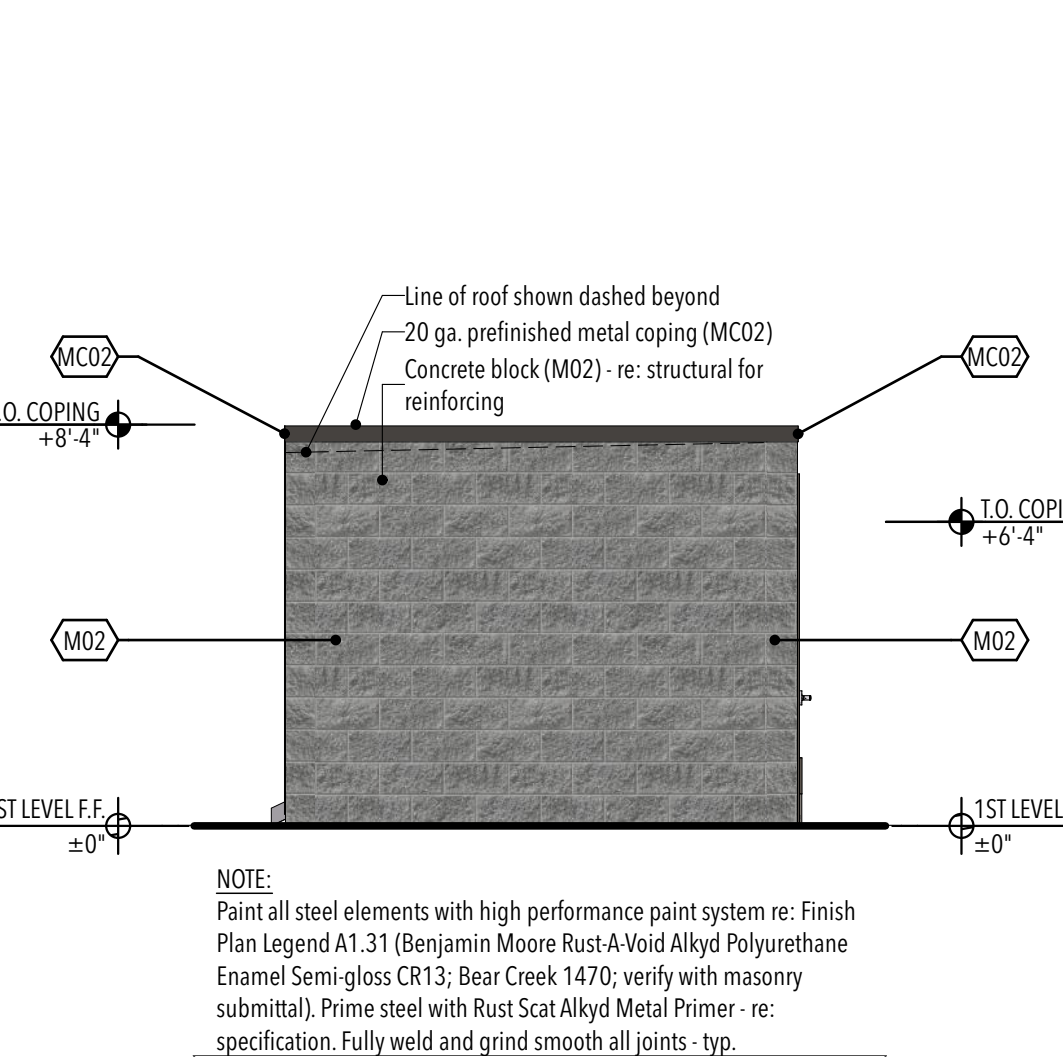
ENLARGED ARCHITECTURAL SITE PLAN

05 3/8" = 1'-0"



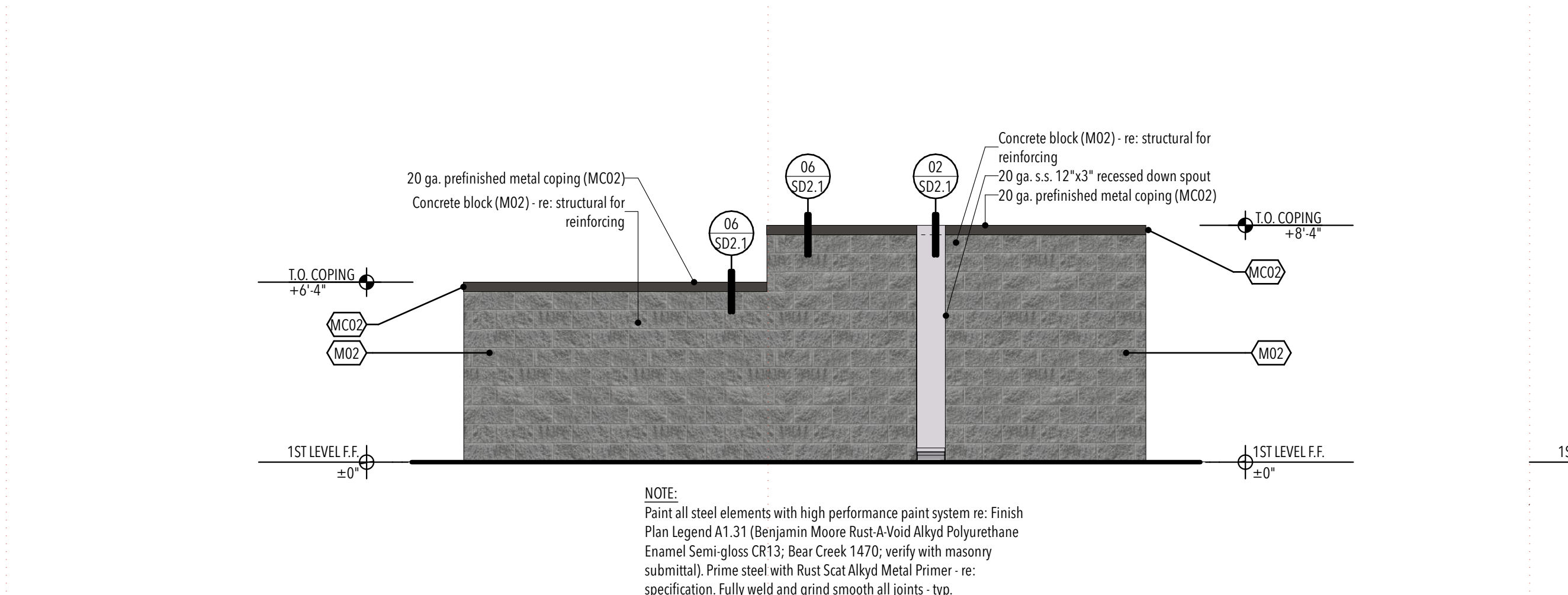
TRASH ENCLOSURE WEST

07 1/4" = 1'-0"



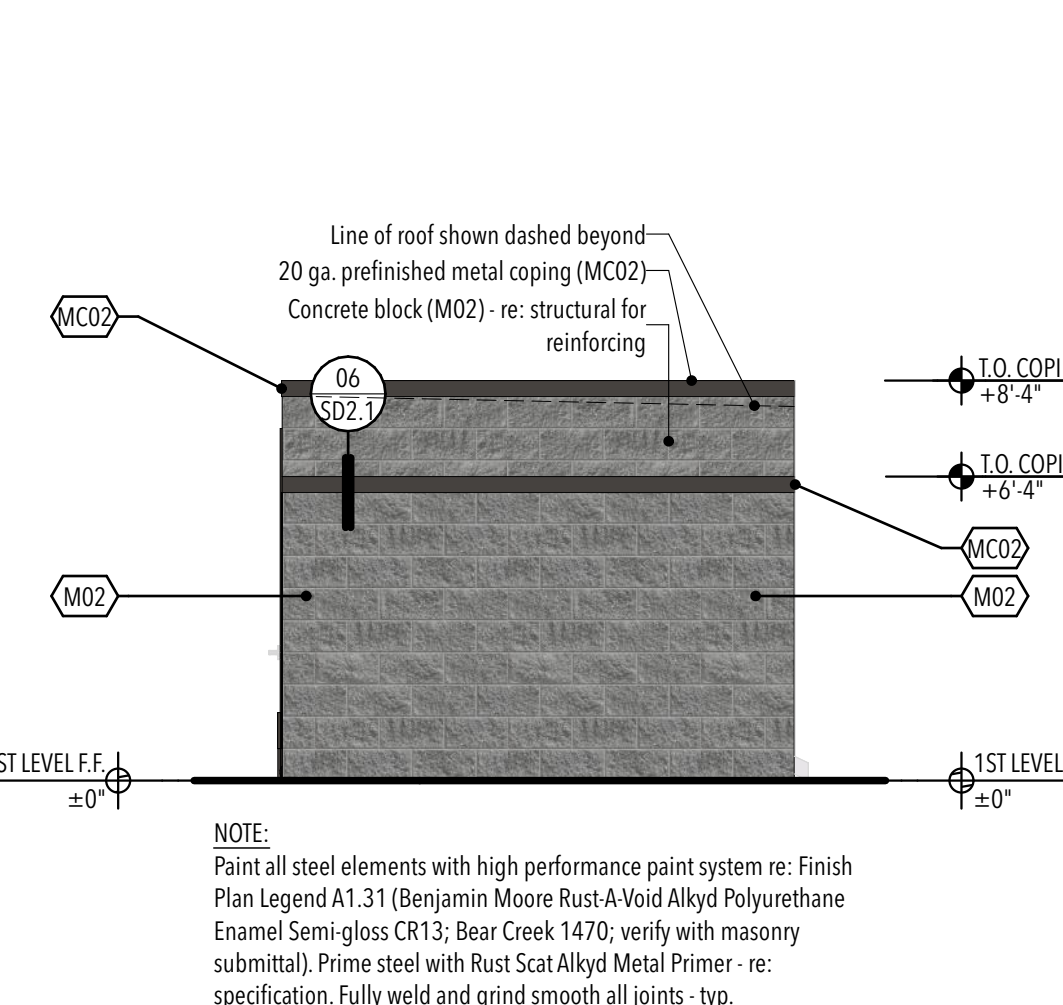
TRASH ENCLOSURE NORTH

08 1/4" = 1'-0"



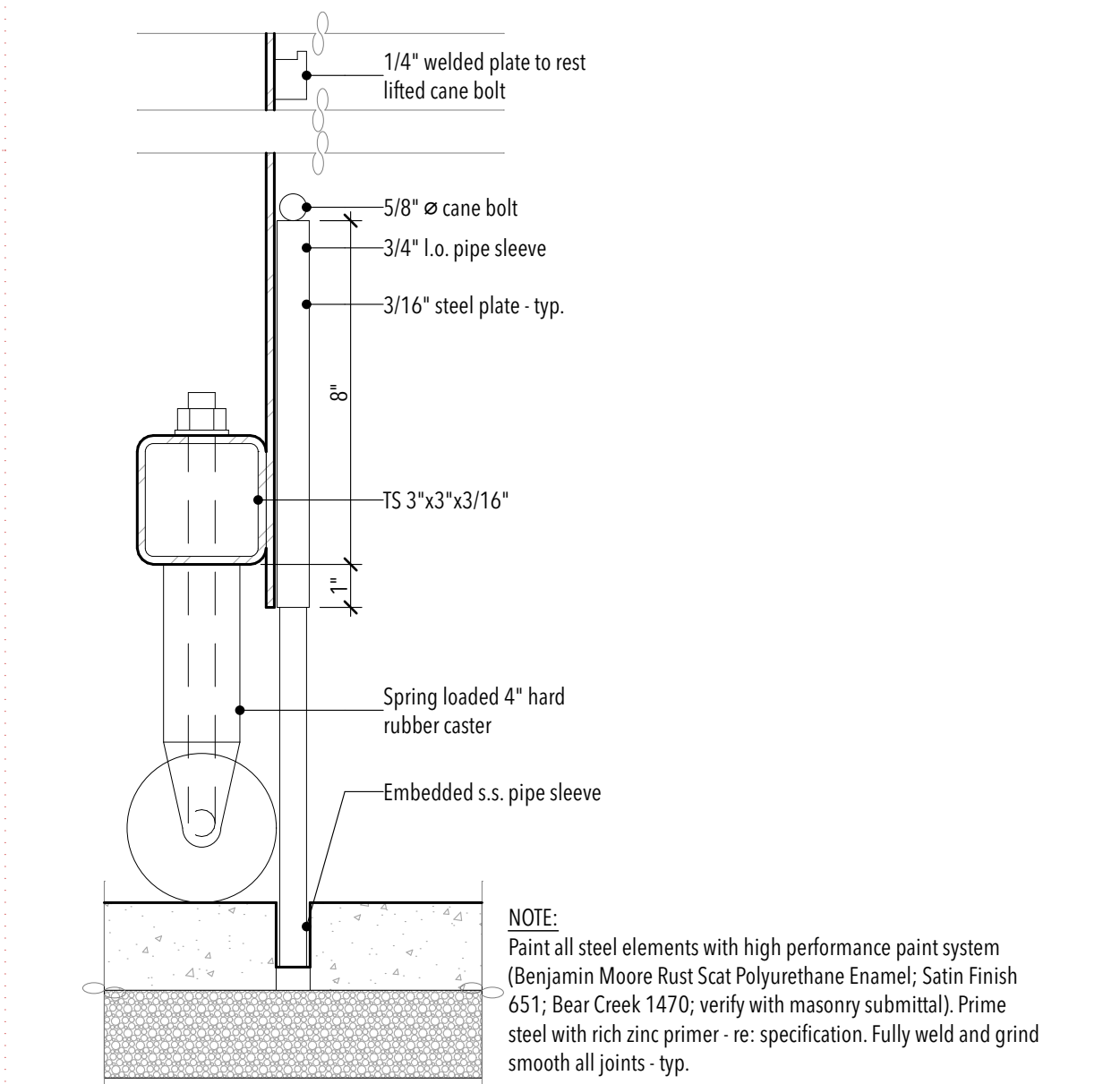
TRASH ENCLOSURE EAST

09 1/4" = 1'-0"



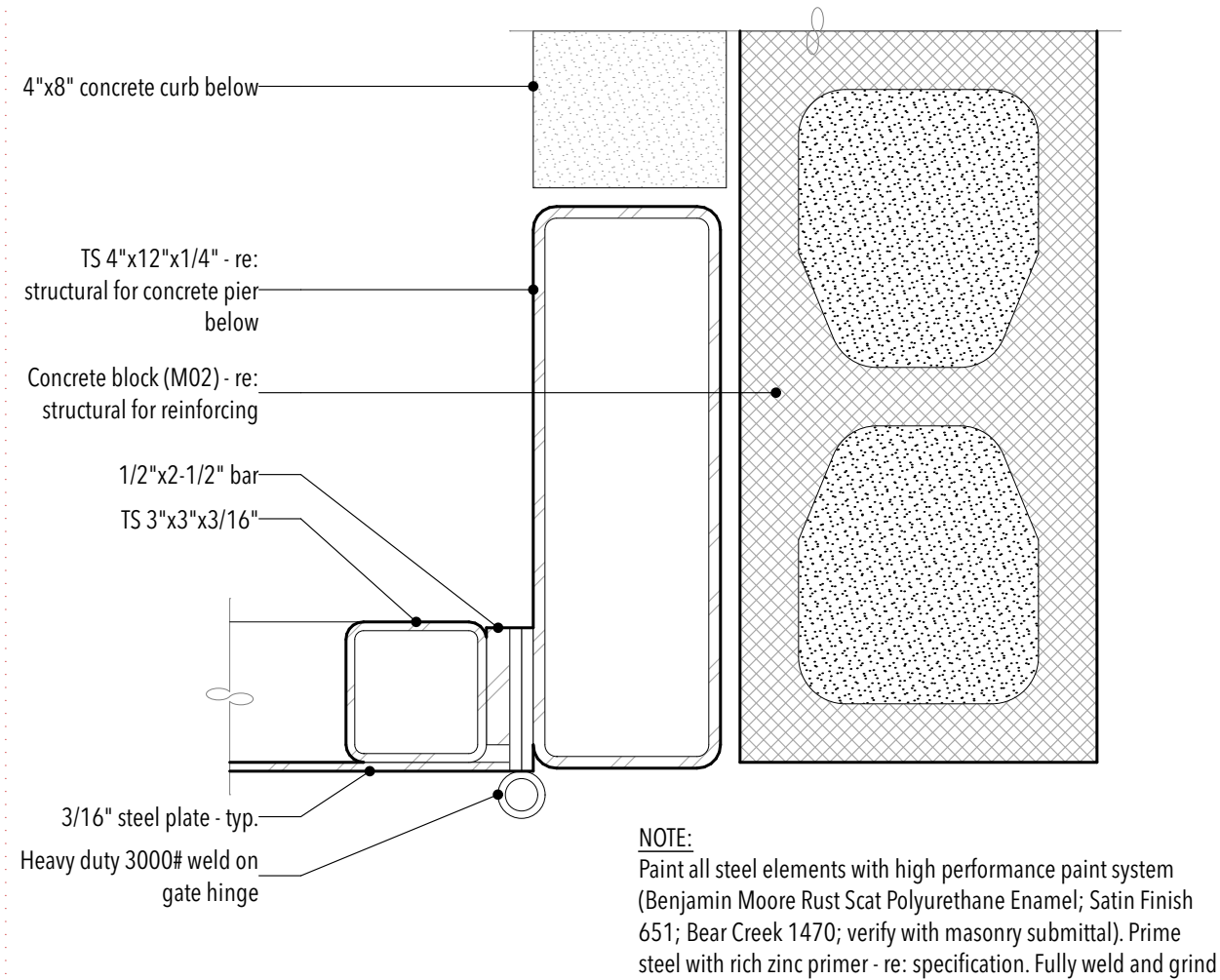
TRASH ENCLOSURE SOUTH

10 1/4" = 1'-0"



GATE DOOR SECTION

10 3" = 1'-0"



TRASH ENCLOSURE JAMB DETAIL

11 3" = 1'-0"