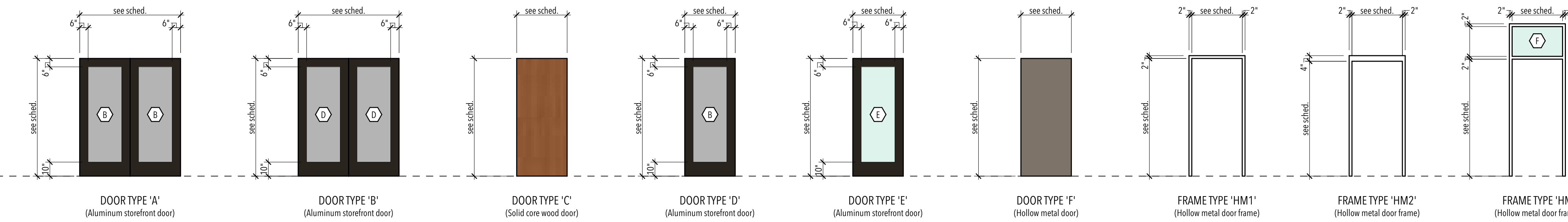


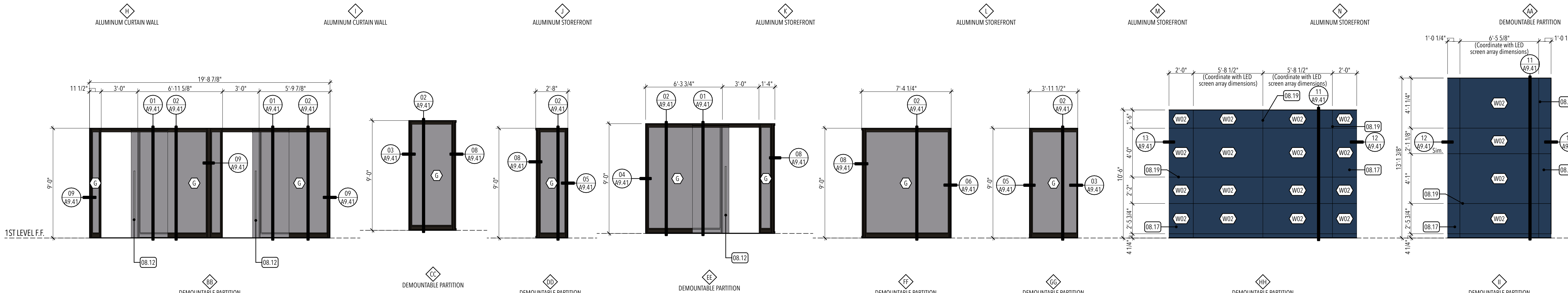
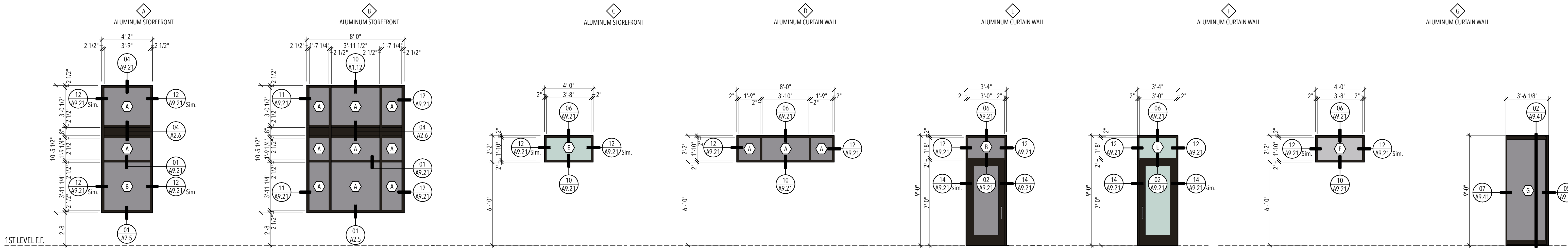
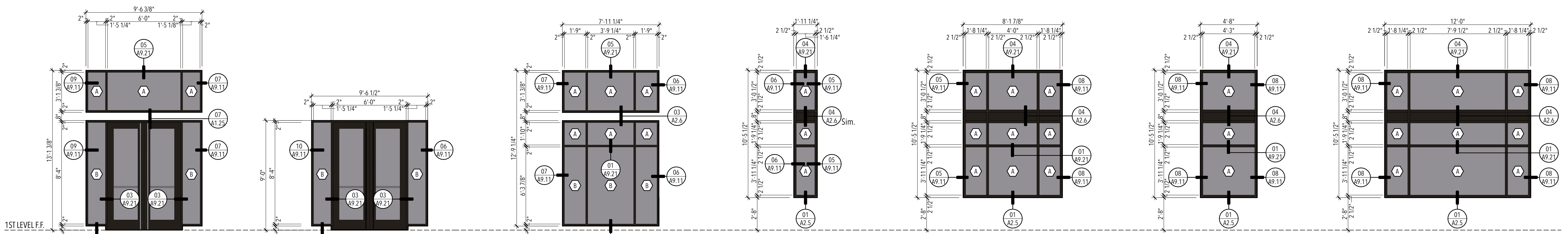
NO.	ID	ROOM NAME	DOOR										FRAME			DETAILS			HDWR.	REMARKS
			WIDTH x HEIGHT	THICK.	TYPE	CONST.	PAINT	FINISH	GLASS	RATING	WALL WIDTH	WIDTH	TYPE	CONST.	PAINT	FINISH	HEAD	JAMB		
101	A	VESTIBULE	6'-0" x 8'-10"	1 3/4"	A	AL	PAINT	B	-	-	6.3/4"	4.1/2"	-	AL	PAINT	-	-	-	1	Pair of doors
101	B	VESTIBULE	6'-0" x 8'-10"	1 3/4"	B	AL	PAINT	D	-	-	6.3/4"	4.1/2"	-	AL	PAINT	-	-	2	Pair of doors	
107	A	ELECTRICAL	3'-0" x 7'-0"	1 3/4"	E	AL	PAINT	-	-	-	1'-0 5/8"	4.1/2"	-	AL	PAINT	-	-	3	-	
110	A	ADMIN.	3'-0" x 7'-0"	1 3/4"	C	WD	STAIN	-	-	-	4.7/8"	5.7/8"	HM1	HM	PAINT	03/A9.11	04/A9.11	4	Stain door to match millwork plastic laminate	
114	A	RESTROOM	3'-0" x 7'-0"	1 3/4"	C	WD	STAIN	-	-	-	4.7/8"	5.7/8"	HM3	HM	PAINT	03/A9.11	04/A9.11	6	Stain door to match millwork plastic laminate	
115	A	RESTROOM	3'-0" x 7'-0"	1 3/4"	C	WD	STAIN	-	-	-	4.7/8"	5.7/8"	HM3	HM	PAINT	03/A9.11	04/A9.11	6	Stain door to match millwork plastic laminate	
116	A	HALLWAY	3'-0" x 7'-0"	1 3/4"	D	AL	PAINT	B	-	-	1'-0 5/8"	4.1/2"	-	AL	PAINT	-	-	3	-	
117	A	JANITOR/STORAGE	3'-0" x 7'-0"	1 3/4"	C	WD	STAIN	-	-	-	4.7/8"	5.7/8"	HM3	HM	PAINT	03/A9.11	04/A9.11	5	Stain door to match millwork plastic laminate	
118	A	FIRE RISER ROOM	3'-0" x 7'-0"	1 3/4"	E	AL	PAINT	-	-	-	1'-0 5/8"	4.1/2"	-	AL	PAINT	-	-	3	-	
119	A	IT ROOM	3'-0" x 7'-0"	1 3/4"	C	WD	STAIN	-	-	-	8.1/4"	7.1/4"	HM1	HM	PAINT	03/A9.11	04/A9.11	4	Stain door to match millwork plastic laminate	
120	A	BREAKROOM	3'-0" x 7'-0"	1 3/4"	C	WD	STAIN	-	-	-	7.1/4"	8.1/4"	HM3	HM	PAINT	03/A9.11	04/A9.11	7	Stain door to match millwork plastic laminate	
120	A	OUTDOOR STORAGE	3'-0" x 7'-0"	1 3/4"	F	HM	PAINT	-	-	-	7.5/8"	7.5/8"	HM2	HM	PAINT	-	-	9	-	
121	A	MOTHER'S ROOM	3'-0" x 7'-0"	1 3/4"	C	WD	STAIN	-	-	-	7.1/4"	7.1/4"	HM1	HM	PAINT	03/A9.11	04/A9.11	8	Stain door to match millwork plastic laminate	



DOOR & FRAME ELEVATIONS

01

1/4" = 1'-0"



OPENING ELEVATIONS

02

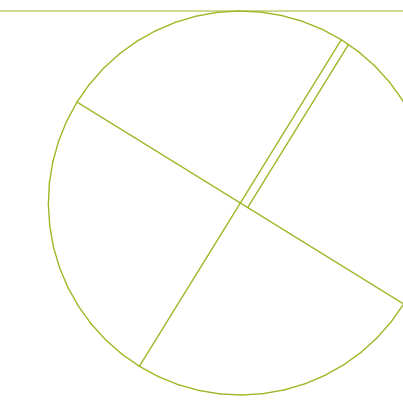
1/4" = 1'-0"

STUDIO 333 ARCHITECTS  
333 24TH STREET  
OGDEN, UT 84401  
801.394.3033

AMERICA FIRST CREDIT UNION - NORTH SCOTTSDALE BRANCH  
15301 N HAYDEN ROAD, SCOTTSDALE, ARIZONA

NO.	DATE	DESCRIPTION

PERMIT SET  
DATE: 03.12.25  
PROJECT NUMBER: 2431  
SCALE: 1/4" = 1'-0", 1" = 1'-0"



DOOR SCHEDULE & WINDOW ELEVATIONS

A9.1

KEY NOTES:

- Demountable partition system single slider door with cushion stop function. Provide 1/4" tempered glass @ all doors.
- Demountable partition system furnished and installed by Contractor - re: opening elevations
- Demountable partition system glazing joint - re: opening elevation - typ.

MARK	DESCRIPTION
A	1" thick insulated glass
B	1" thick insulated glass, tempered both lites
C	1/4" float glass
D	1/4" tempered glass
E	1" thick insulated glass, tempered both lites, etched
F	1/4" tempered etched glass
G	3/8" tempered float glass

- DOOR & FRAME NOTES:
- Material and system abbreviations:  
WD = Wood  
AL = Aluminum  
HM = Hollow Metal  
ST = Storefront
  - All hollow metal door and window frames are to have a single rabbet profile.
  - See specifications for hardware group definition.
  - All hollow metal frames that are located at an exterior wall shall be 14 ga. construction and galvanized.
  - All hollow metal doors that are located at an exterior wall shall be 14 ga. construction, insulated and galvanized.
  - Overall aluminum frame dimensions are given for reference - refer to window details for jamb and sill conditions. Overall dimensions are to be field verified.
  - General Contractor to coordinate work between the door installer and security system installer.
  - Where a door is shown on the floor plans but is not numbered and/or does not appear in the door schedule, the following door, frame and hardware are to be bid for this opening: door type: A, frame type: HM1, hardware group: 07.
  - All aluminum frames shall have standard manufacturer clear anodized finish.
  - Paint all hollow metal frames.
  - Provide 3 beads of sealant at the head and jambs and 2 beads of sealant at the sill of all exterior aluminum frames.
  - All door dimensions are to rough openings.
  - The Contractor shall provide door hardware to accommodate door swings as indicated on the Annotated Floor Plan sheet A1.1.
  - All ADA door opener hardware shall be hardware and finished to match storefront framing. Re: Annotated Floor Plan sheet A1.1 for actuator locations.
  - All hardware and fasteners shall be finished to match storefront system U.N.O.
  - The Contractor shall be responsible to coordinate the door hardware installation throughout the project to ensure consistent installations by each contractor.
  - All door hardware shall meet the requirements of IBC 1010.1.9.1.

- WINDOW NOTES:
- All aluminum frames shall have standard manufacturer anodic finish; color: Dark Bronze Anodized.
  - Provide 3 beads of sealant at the head and jambs and 2 beads of sealant at the sill of all exterior aluminum frames.
  - All window dimensions are to exterior F.O. frame, not to rough openings.
  - Provide square glazing stops at all glazing systems.
  - The glazing contractor shall be responsible to field verify all dimensions prior to purchasing or fabricating any glazing system components.
  - Re: Door and Frame Elevations for glazing designations at doors.

- DEMOUNTABLE PARTITION NOTES:
- All demountable partition frames shall have standard manufacturer's anodic finish; color: Dark Bronze Anodized.
  - All frame dimensions are to exterior F.O. frame, not to rough openings.
  - The demountable partition contractor shall be responsible to field verify all dimensions prior to purchasing or fabricating any glazing system components.
  - Provide 1/4" tempered glazing at doors. Provide 3/8" tempered glazing at fixed glazing panels. Re: Glazing Legend.
  - Re: Specification Section 10.2219 Demountable Walls for additional information.

- DOOR HARDWARE SCHEDULE:
- GROUP 1 - Exterior Vestibule Doors (Pair):
- (1) 3-point lock mechanism
  - (1) Cylinder lock
  - (2) Pulls/Panic Handles; Manufacturer: CRL Blumcraft; Item: PA100, Handle 'F', 1 1/4" diameter, Rail Mount; Finish: Brushed Stainless Steel
  - (2) Push/Panic Bars; Manufacturer: CRL Blumcraft; Item: PA100, Handle 'D', 1 1/4" diameter, Rail Mount, Top latching; Finish: Brushed Stainless Steel
  - (1) Continuous bottom sweep and weather stripping
  - (2) Continuous hinges; Roton or equivalent; color to match door finish
  - (2) ADA actuator; LCN 7910-918/919-919 (Jambs)
  - (1) ADA operator; LCN 4642 (mount in Vestibule)
  - (1) Magnetic/Electronic strike; CRL ESK150
  - (1) Threshold ramp strike @ inactive leaf
  - (1) Threshold
  - (1) See Weatherstripping
  - (1) Vinyl sign that states "These Doors to Remain Unlocked During Business Hours".
- Note: all hardware and fasteners shall be finished to match aluminum storefront system. Re: Annotated Floor Plan for ADA actuator locations. Verify which door receives the operator with Architect/Owner prior to installation.

- GROUP 2 - Interior Vestibule Doors:
- (2) Pulls/Panic Handles; Manufacturer: CRL Blumcraft; Item: PA100, Handle 'F', 1 1/4" diameter, Rail Mount; Finish: Brushed Stainless Steel
  - (2) Push/Panic Bars; Manufacturer: CRL Blumcraft; Item: PA100, Handle 'D', 1 1/4" diameter, Rail Mount, Top latching; Finish: Brushed Stainless Steel
  - (1) Continuous bottom sweep and weather stripping
  - (2) Continuous hinges; Roton or equivalent; color to match door finish
  - (1) Closer (install at interior); LCN 4010/4110 series; Provide with manufacturer's integral overhead door stop; satin nickel US26D
  - (2) ADA actuator; LCN 7910-918/919-919 (Jambs)
  - (1) ADA operator; LCN 4642 (mount in Vestibule)
  - (1) Door stop (floor or wall); Rockwood wall mounted door stop; 406; satin chrome US26D

- GROUP 3 - Exterior Doors:
- (1) Continuous hinge; Roton or equivalent; color to match door finish
  - (1) Lockset; Schlage ND Series (Storeroom lock); Athens; satin chrome US26D
  - (1) Closer (install in room); LCN 4010/4110 series; satin chrome US26D
  - (1) Door stop (floor or wall); Rockwood wall mounted door stop; 406; satin chrome US26D

- GROUP 4 - IT Room / Admin Room:
- (3) Pair hinges; TA2714 4.5X4; satin chrome US26D
  - (1) Lockset; Schlage ND Series (Passage lock); Athens; satin chrome US26D
  - (1) ADA approved dead bolt and key w/ "OCCUPIED" designation on exterior side
  - (1) Closer (install in room); LCN 4010/4110 series; satin chrome US26D
  - (1) Door stop; Rockwood wall mounted door stop; 406; satin chrome US26D
  - (1) Kick plate (push side only; finish to match door hardware)

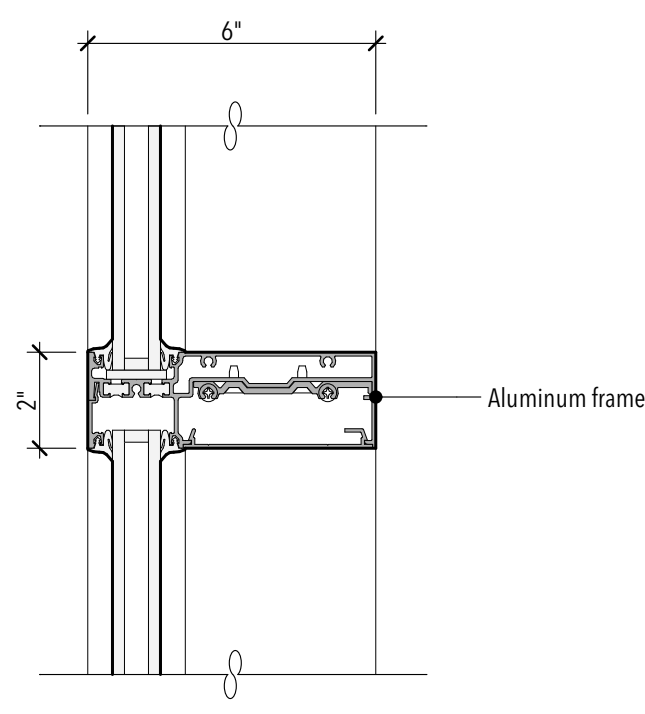
- GROUP 5 - Storage / Janitor:
- (3) Pair hinges; TA2714 4.5X4; satin chrome US26D
  - (1) Lockset; Schlage ND Series (Storeroom lock); Athens; satin chrome US26D
  - (1) Door stop (floor or wall); Rockwood wall mounted door stop; 406; satin chrome US26D

- GROUP 6 - Unisex Restroom:
- (3) Pair hinges; TA2714 4.5X4; satin chrome US26D
  - (1) Lockset; Schlage ND Series (Passage lock); Athens; satin chrome US26D
  - (1) ADA approved dead bolt and key w/ "OCCUPIED" designation on exterior side
  - (1) Closer (install in room); LCN 4010/4110 series; satin chrome US26D
  - (1) Door stop; Rockwood wall mounted door stop; 406; satin chrome US26D
  - (1) Kick plate (push side only; finish to match door hardware)

- GROUP 7 - Break Room:
- (3) Pair hinges; TA2714 4.5X4; satin chrome US26D
  - (1) Lockset; Schlage ND Series (Storeroom lock); Athens; satin chrome US26D
  - (1) Closer (install in room); LCN 4010/4110 series; satin chrome US26D
  - (1) Door stop; Rockwood wall mounted door stop; 406; satin chrome US26D
  - (1) Kick plate (push side only; finish to match door hardware)

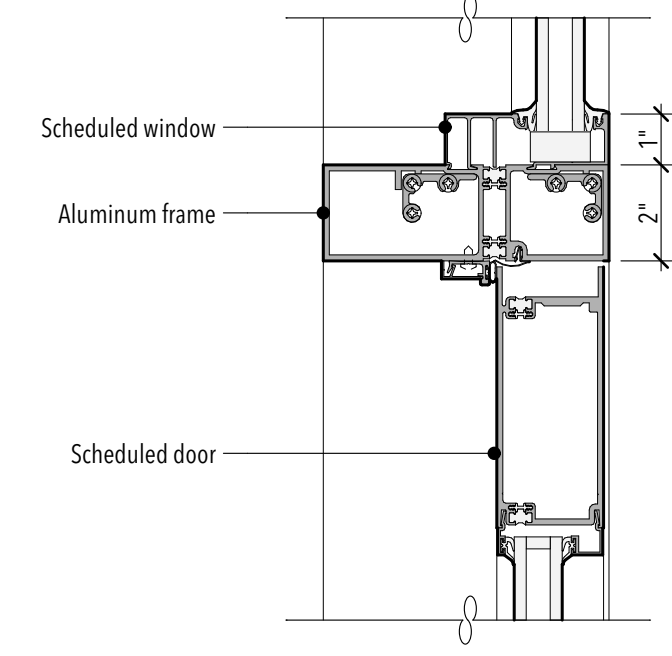
- GROUP 8 - Mother's Room:
- (3) Pair hinges; TA2714 4.5X4; satin chrome US26D
  - (1) Lockset; Schlage ND Series (Passage lock); Athens; satin chrome US26D
  - (1) ADA approved dead bolt and key w/ "OCCUPIED" designation on exterior side
  - (1) Door stop; Rockwood wall mounted door stop; 406; satin chrome US26D

- GROUP 9 - Outdoor Storage:
- (3) Pair hinges; TA2714 4.5X4; satin chrome US26D
  - (1) Lockset; Schlage ND Series (Storeroom lock); Athens; satin chrome US26D
  - (1) Overhead door holder; surface mounted; Glyn-Johnson 90 H Series
- Note: Provide door and frame reinforcement for overhead door holder



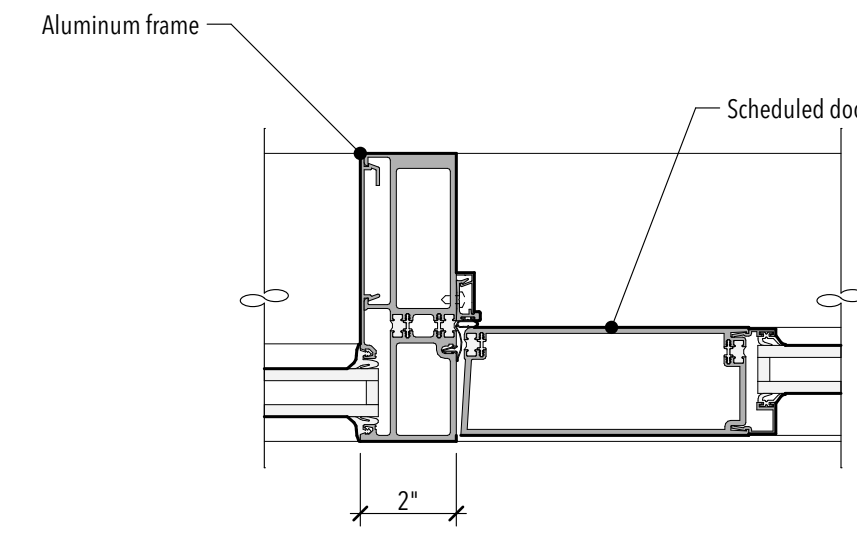
JAMB/MULLION DETAIL

01 3" = 1'-0"



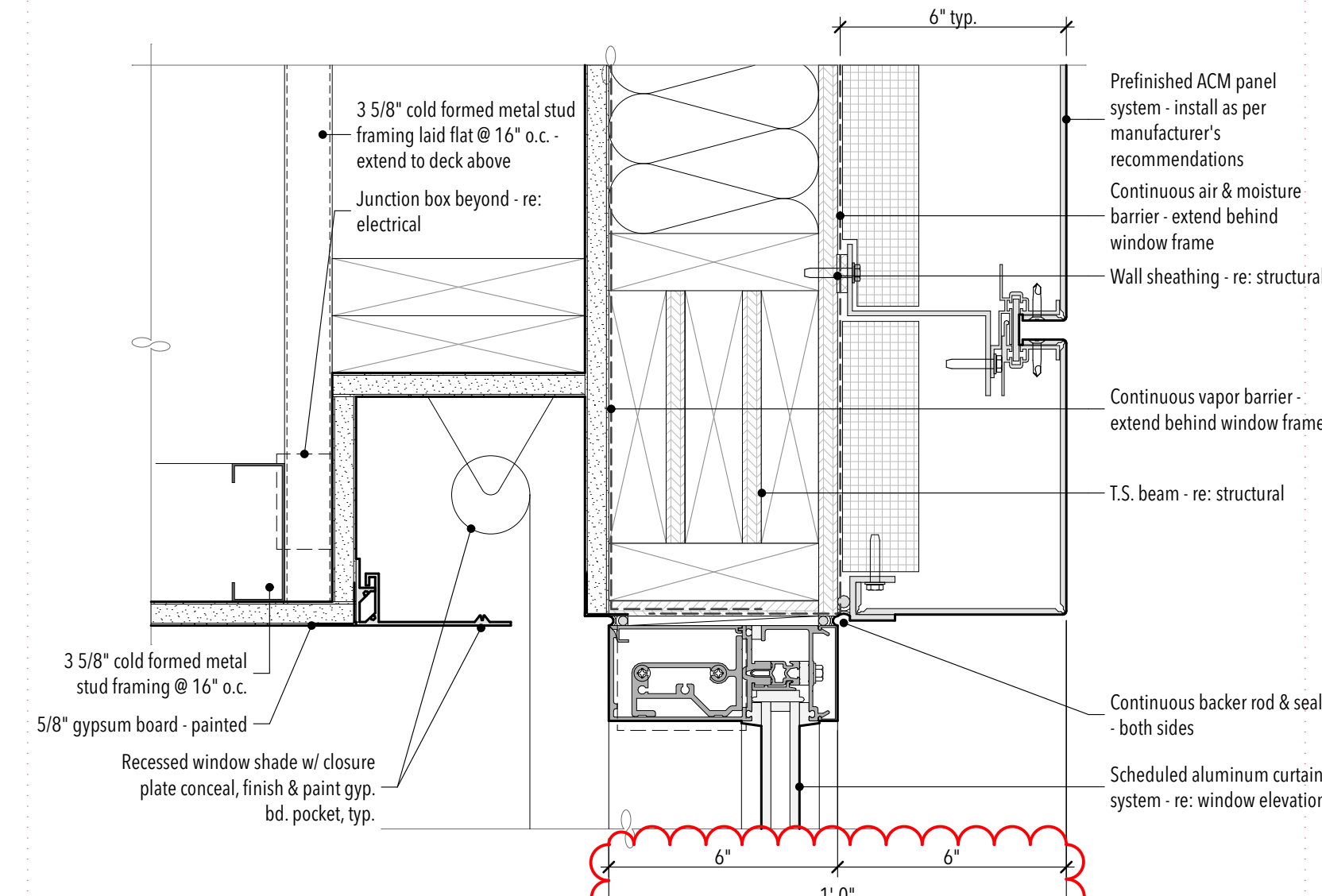
HEAD DETAIL

02 3" = 1'-0"



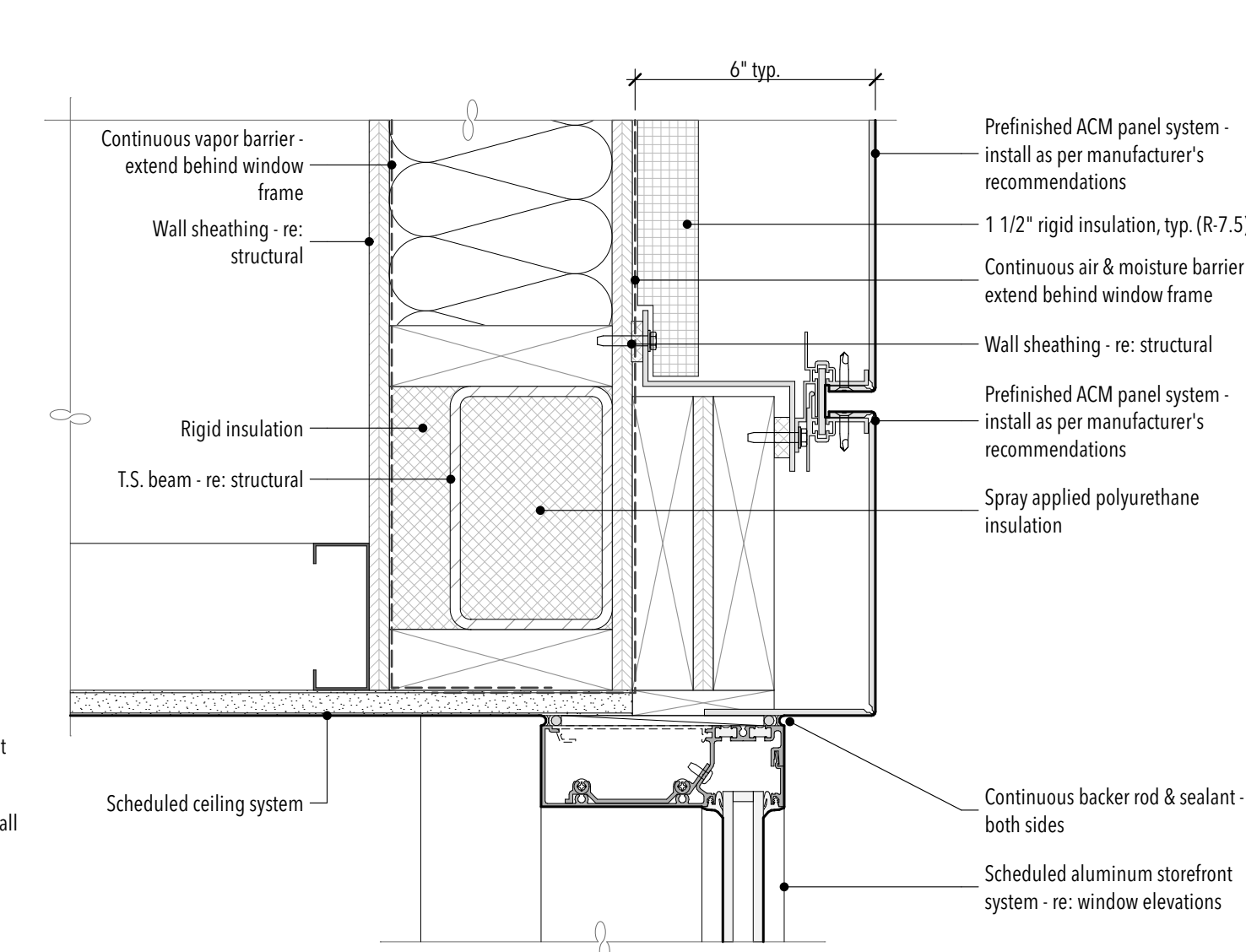
JAMB DETAIL

03 3" = 1'-0"



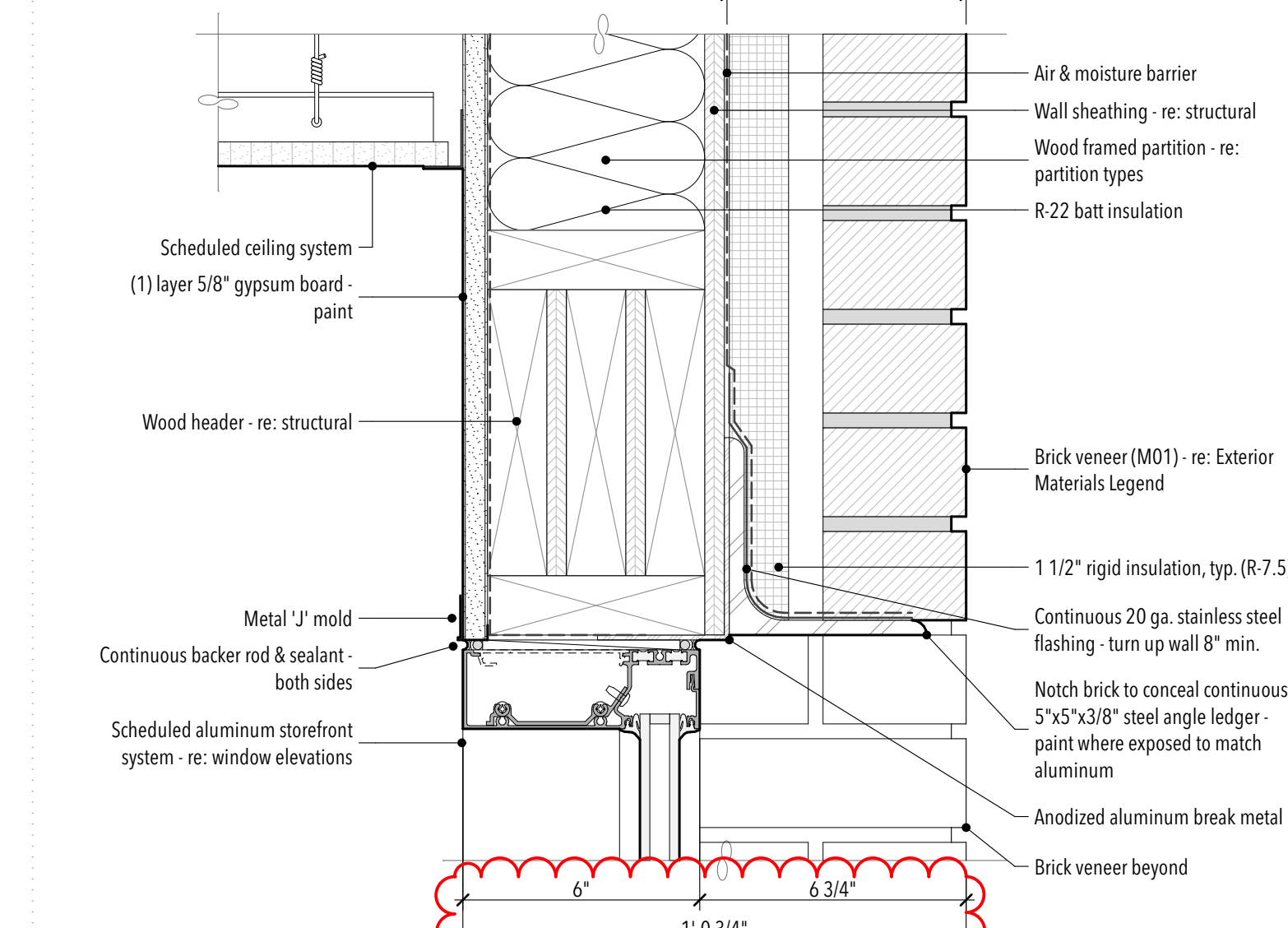
HEAD DETAIL @ INTERIOR SHADE

04 3" = 1'-0"



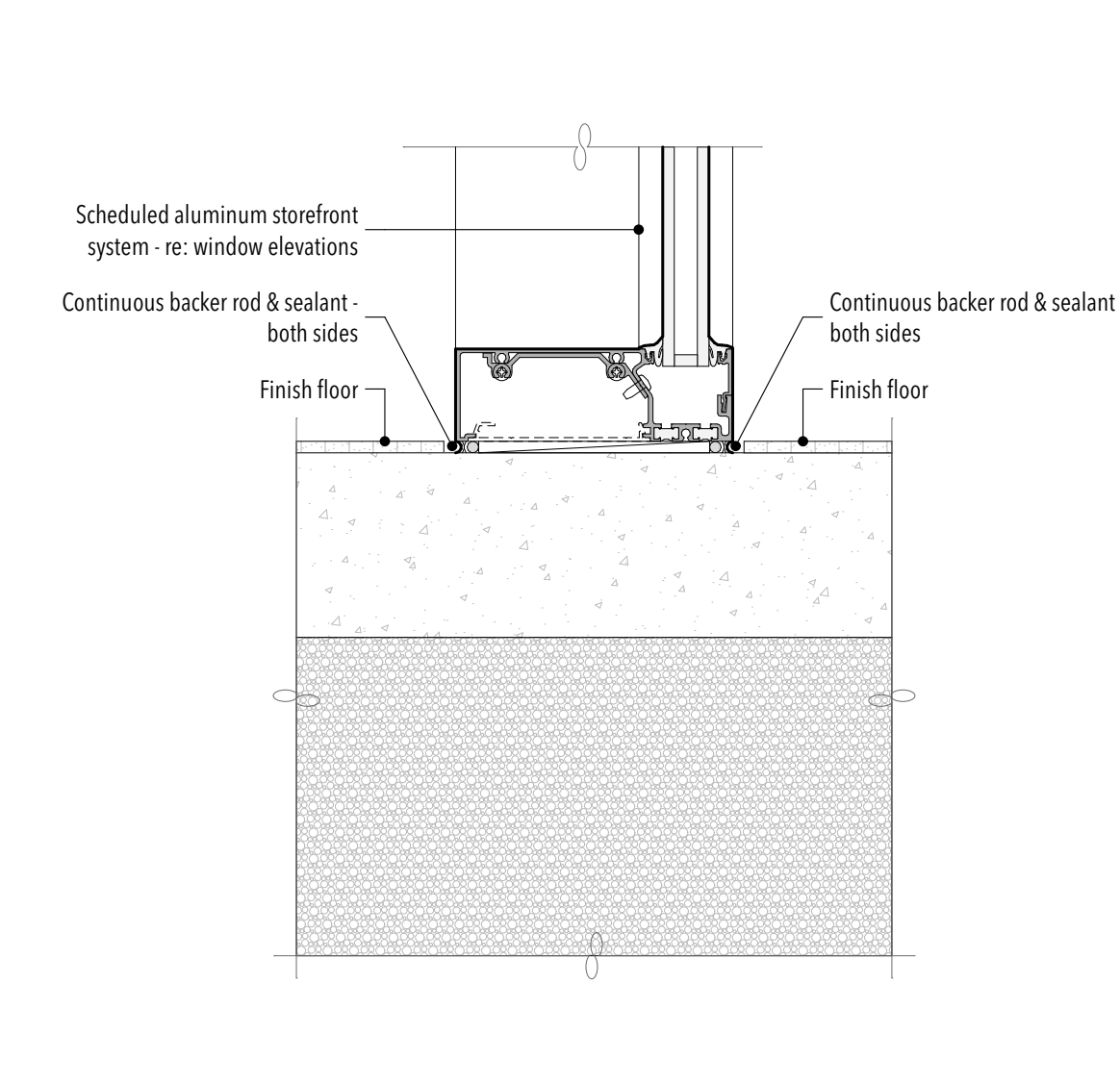
HEAD DETAIL @ VESTIBULE

05 3" = 1'-0"



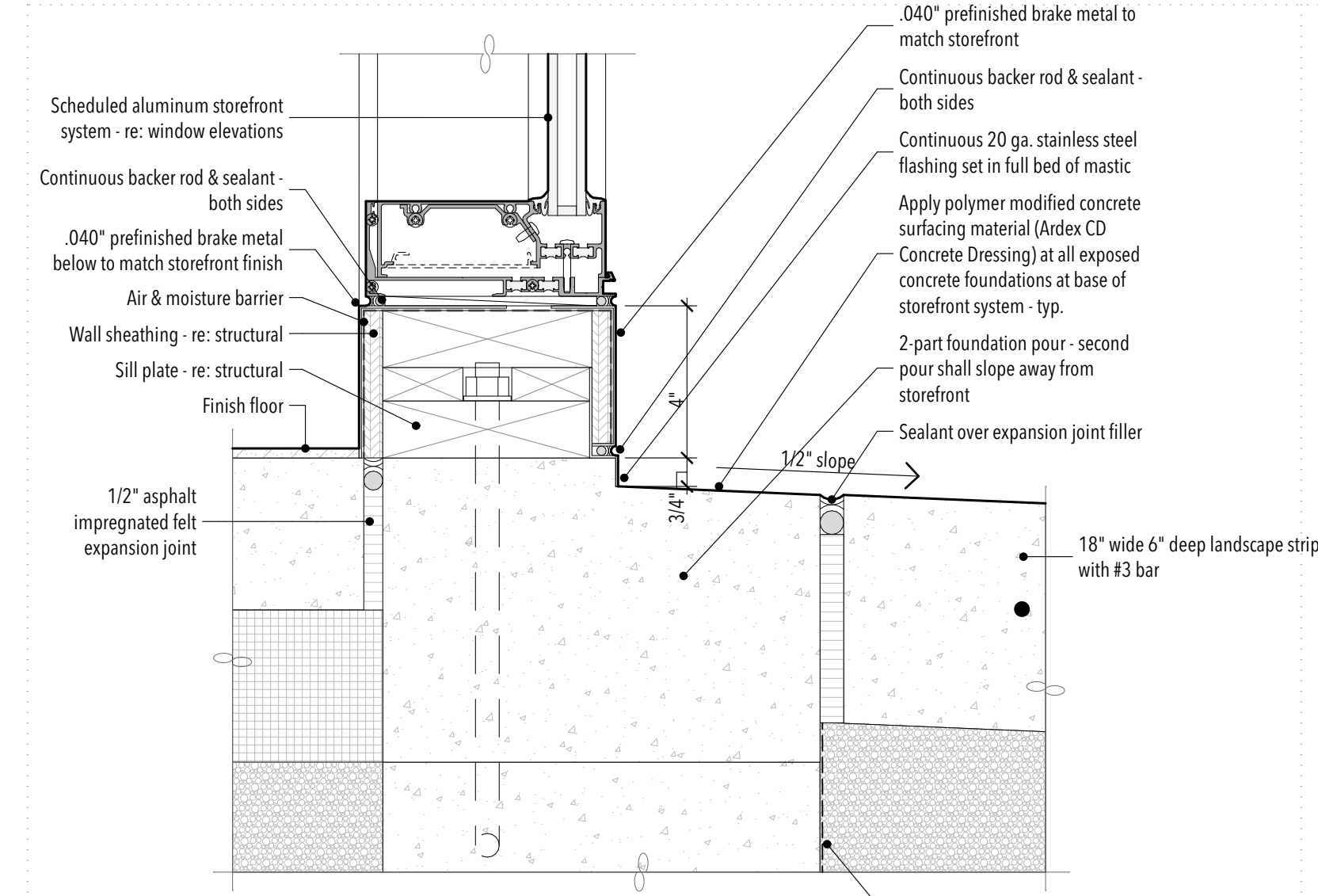
HEAD DETAIL @ BRICK VENEER

06 3" = 1'-0"



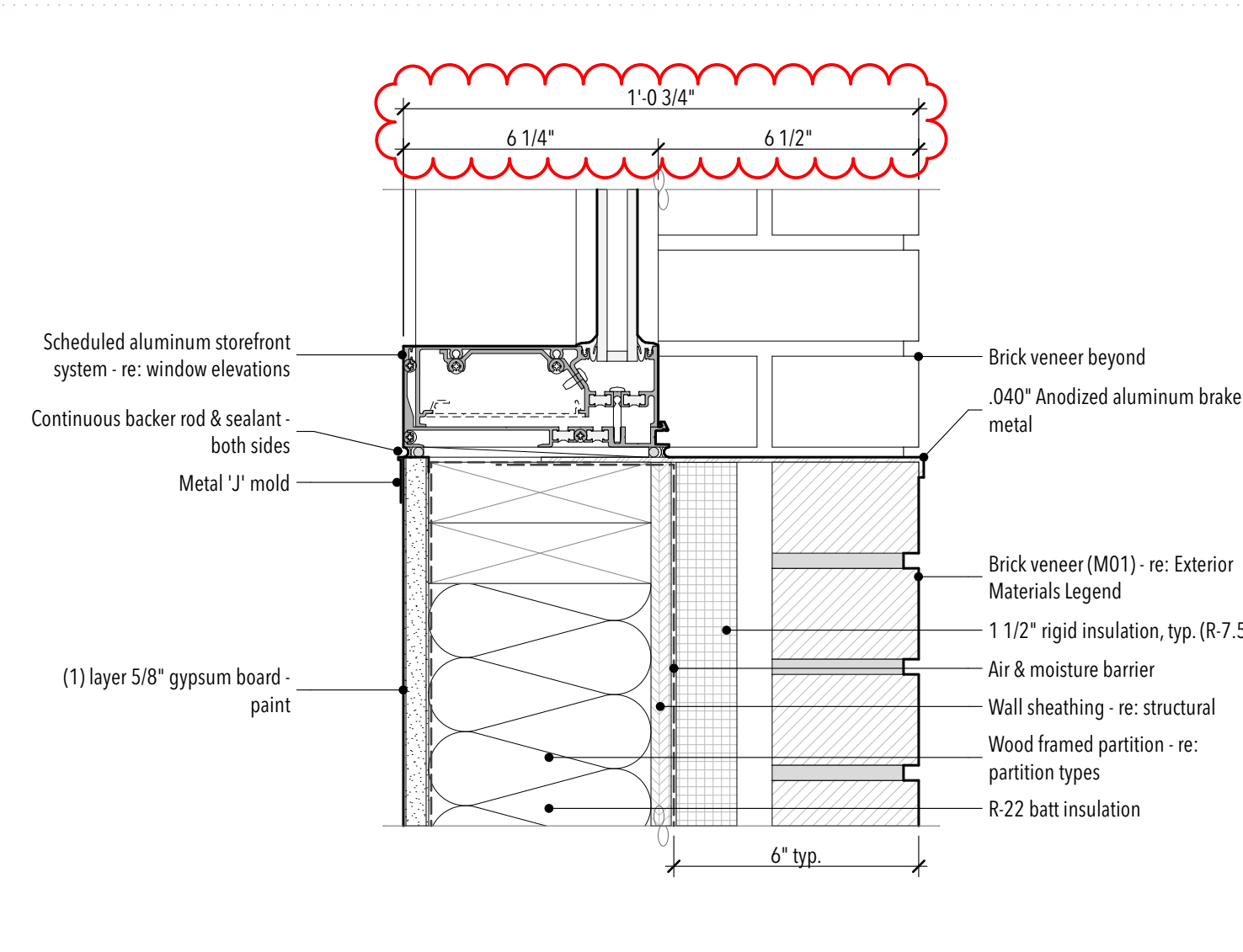
SILL DETAIL @ STOREFRONT

08 3" = 1'-0"



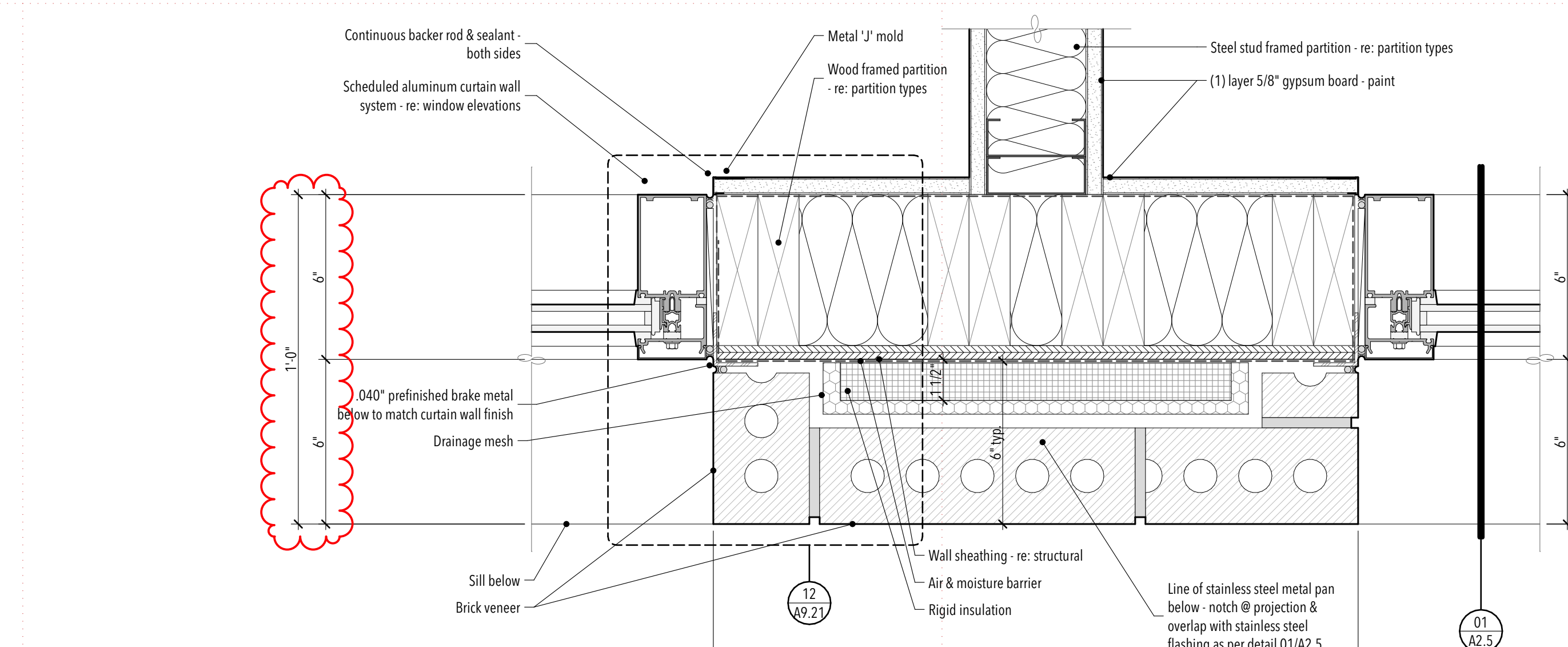
SILL DETAIL @ VESTIBULE

09 3" = 1'-0"



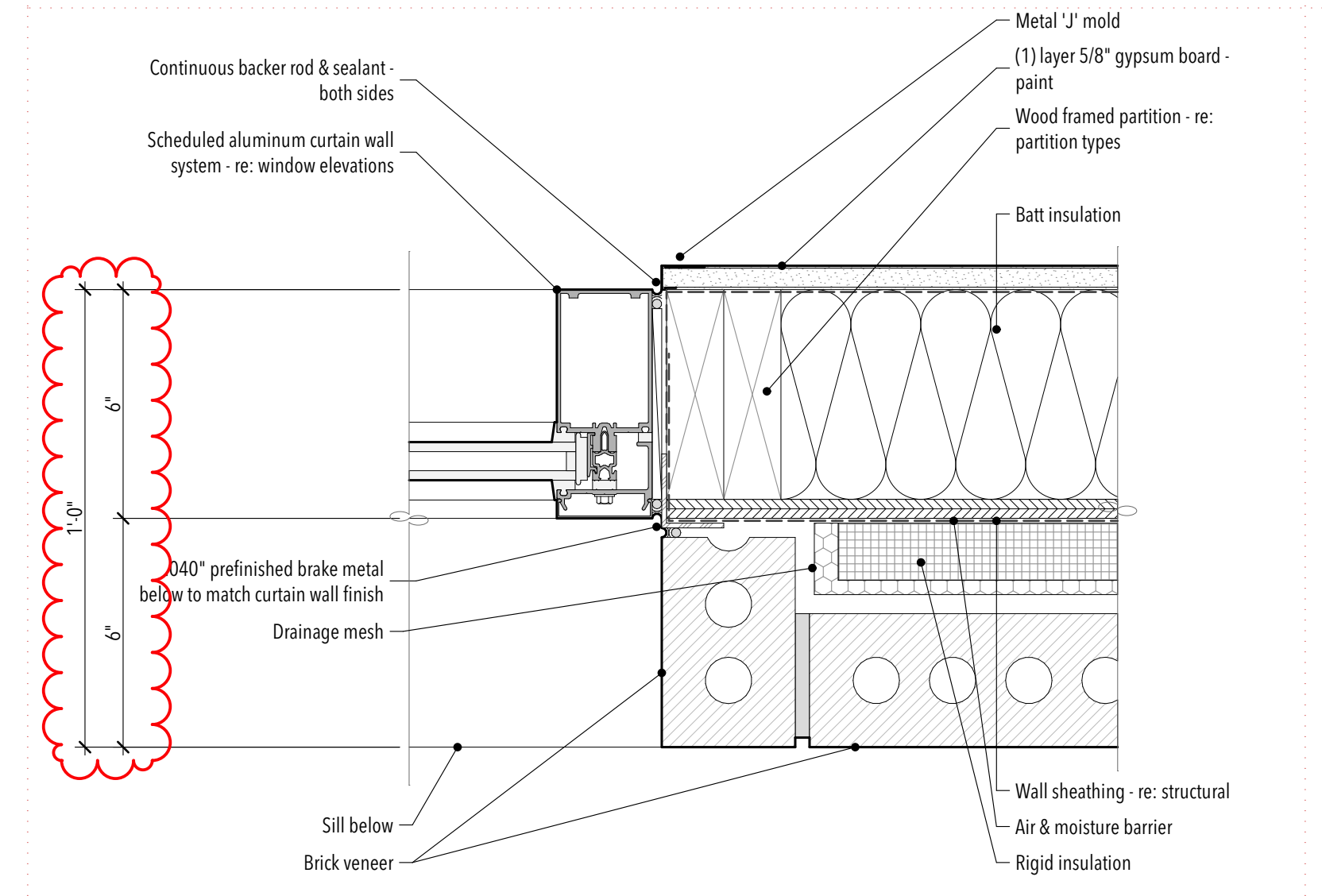
SILL DETAIL @ BRICK VENEER

10 3" = 1'-0"



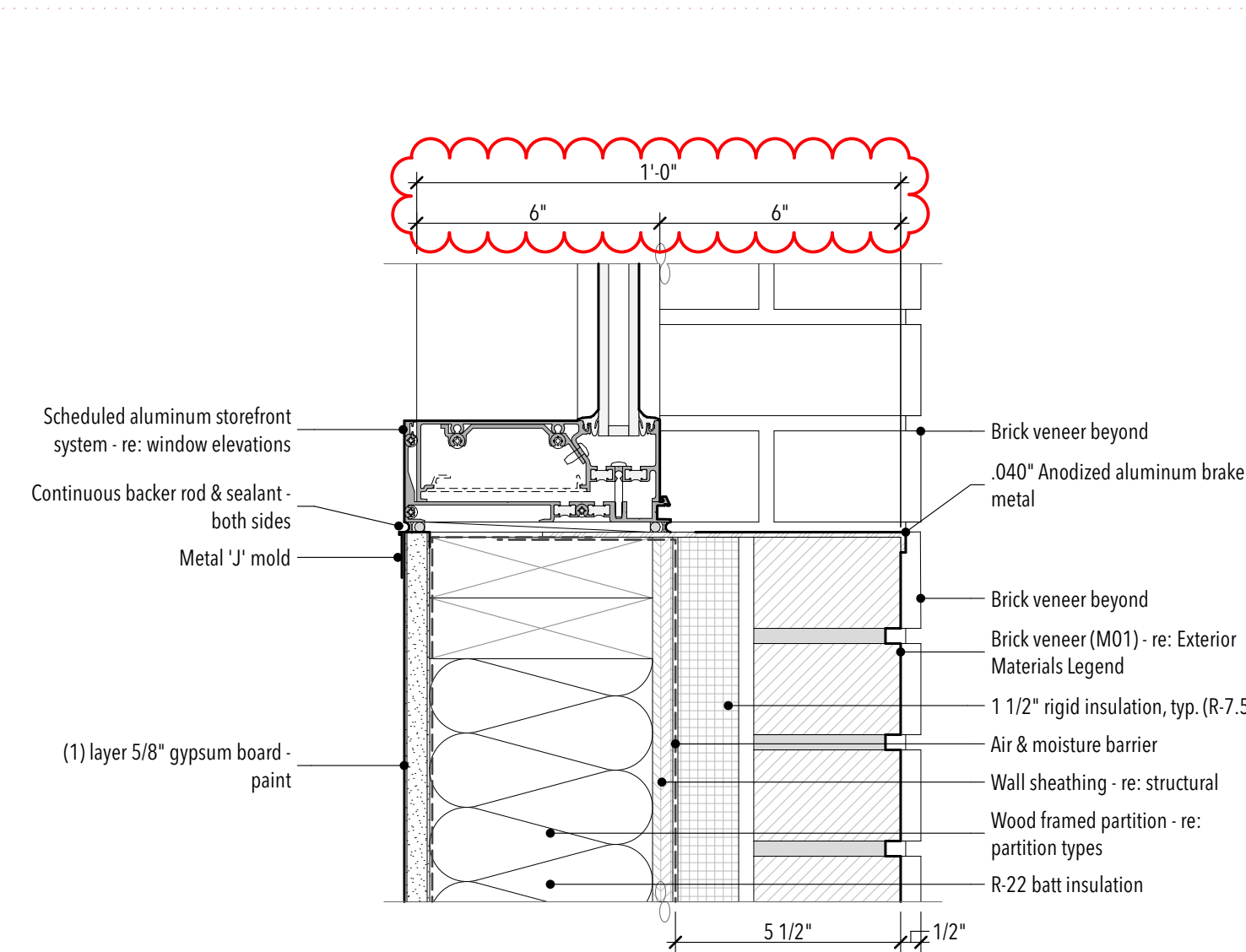
JAMB DETAIL @ BRICK PIER

11 3" = 1'-0"



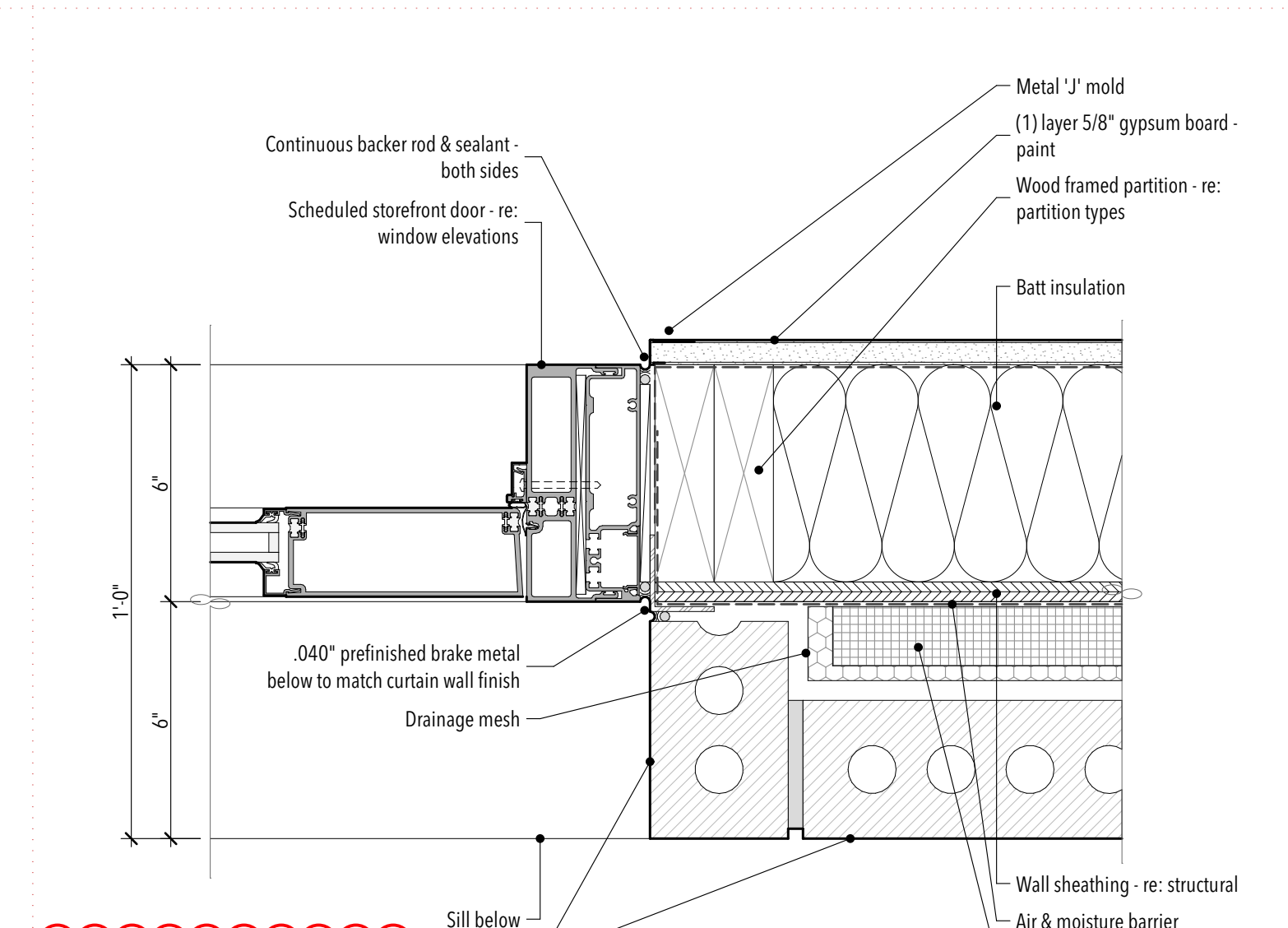
JAMB DETAIL @ BRICK VENEER

12 3" = 1'-0"



SILL DETAIL @ BRICK VENEER

13 3" = 1'-0"



JAMB DETAIL

14 3" = 1'-0"

NO.	DATE	DESCRIPTION

