

# Flexjet Pax Terminal/ Office/ Hangar

## Exterior Finish Color Board

15115 N. Airport Dr.

Scottsdale, Arizona 85260

### PT-1 Field Paint - West Wall Stucco

- a. Manufacture: **Dunn Edwards**
- b. Color: Walrus – DE6368 – LRV 31

PT-1



### PT-2 Accent Paint - Deck Soffit Stucco

- a. Manufacture: **Dunn Edwards**
- b. Color: Egyptian Sand – DE6207 - LRV 40

PT-2



### PT-3 Field Paint - North Wall Stucco

- a. Manufacture: **Dunn Edwards**
- b. Color: Legendary Gray DE6369 – LRV 18

PT-3



### PT-4 Accent Paint - Steel Pipe Columns and Fencing

- a. Manufacture: **Dunn Edwards**
- b. Color: Rhinoceros – DE6327 – LRV 18

PT-4



### STONE-1 Natural Granite - Building Wall Base

- a. Color: Dark Grey Polished

STONE-1



# Flexjet Pax Terminal/ Office/ Hangar

## Exterior Finish Color Board

15115 N. Airport Dr.

Scottsdale, Arizona 85260

### MTL-1 Metal Wall Panels

- a. Manufacture: **PPG**
- b. Color: Duranar Sunstorm Pewter, UC143423F - +/- LVR-18

### MTL-2 Metal Soffit Panels

- a. Manufacture: **PPG**
- b. Model: Duranar Sunstorm
- c. Color: Weathered Zinc, UC143428F- +/- LVR-18

### MTL-3 Metal Soffit Panels

- a. Manufacture: **PPG**
- b. Model: Duranar Sunstorm
- c. Color: Harvest Gold Pearl, UC106690F- +/- LVR-18

### IMP-1 Mini Micro-Rib Insulated Metal Panels - Hangar

- a. Manufacture: **PPG**
- b. Model: Duranar Sunstorm
- c. Color: Pewter, UC143423F- +/- LVR-18

### IMP-2 Vail Insulated Metal Panels - Hangar Door

- a. Manufacture: **PPG**
- b. Model: Duranar Sunstorm
- c. Color: Harvest Gold Pearl, UC106690F- +/- LVR-18

### ROOF-1 Standing Seam Metal Roof

- a. Manufacture: **ATAS**
- b. Color: Duranar Sunstorm Weathered Zinc
- c.. Size: 19-1/2" Panel

MTL-1  
IMP-1

MTL-2  
ROOF-1

MTL-3  
IMP-2

# Flexjet Pax Terminal/ Office/ Hangar

## Exterior Finish Color Board

15115 N. Airport Dr.  
Scottsdale, Arizona 85260

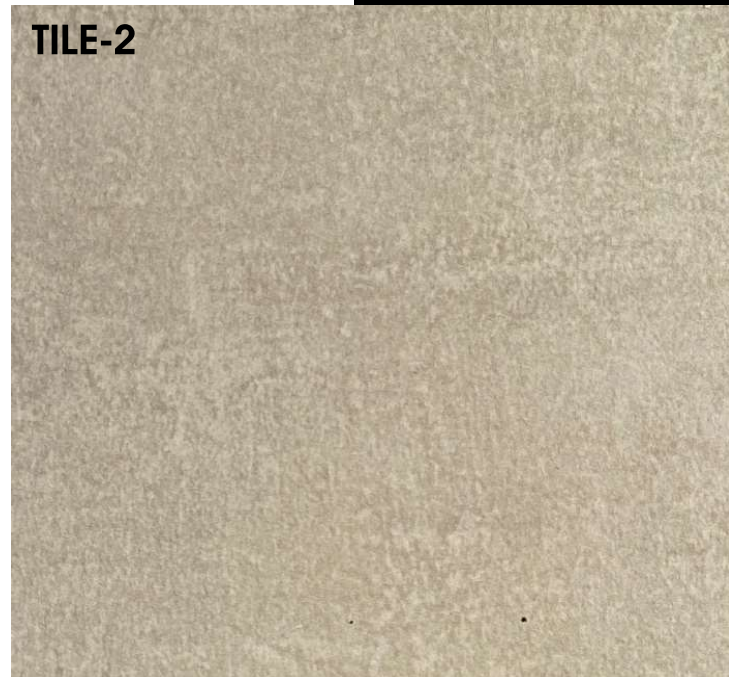
### TILE-1 Porcelain Tile-Field

- a. Manufacture: **DAL-TILE**
- b. Color: Dignitary-Notable Beige  
DR09 Textured
- c. Size: 24x48



### TILE-2 Porcelain Tile-Accent

- a. Manufacture: **DAL-TILE**
- b. Color: Taupe NM11-Matte
- c. Size: 24x24



### GL-1 Building/Railing Glass

- a. Manufacture: **Oldcastle**
- b. Color: Medium Gray 1"  
Dual Paint Insulated Glass
- c. Type: Vanceva-Dual Panel-Tempered  
Low E -Laminated

