

Brian Sager

From: Water Conservation <WaterConservation@Scottsdaleaz.gov>
Sent: Tuesday, March 18, 2025 3:53 PM
To: Brian Sager
Cc: Tessier, Meredith; Baumgardner, Gretchen
Subject: RE: Fairmont Scottsdale Princess Conference Center Expansion Water Feature - Approval
Attachments: Fairmont Scottsdale Princess Conference Center Expansion Water Feature Review (2).pdf

Hello, Brian –

The attached, proposed water features (two) for the Fairmont Scottsdale Princess Conference Center Expansion are approved by the Water Conservation Office.

If a change to the design occurs, please forward those changes to the Water Conservation Office for another approval.

Thank you,

Elisa Klein
Water Conservation Program Supervisor
City of Scottsdale Water Resources
9312 N 94th Street | Scottsdale, AZ 85258

(480) 312-5670
[ScottsdaleAZ.gov/Water](https://www.scottsdaleaz.gov/Water)

Soak up the latest news from [Water – Use It Wisely!](#)

Water Sustainability through Stewardship, Innovation
are approved by the Water Conservation Office.

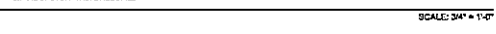
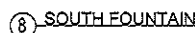
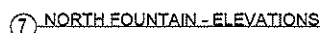
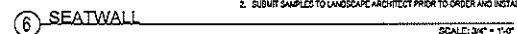
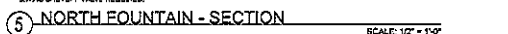
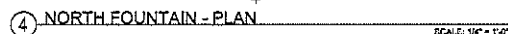
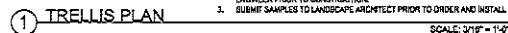
If a change to the design occurs, please forward those changes to the Water Conservation Office for another approval.

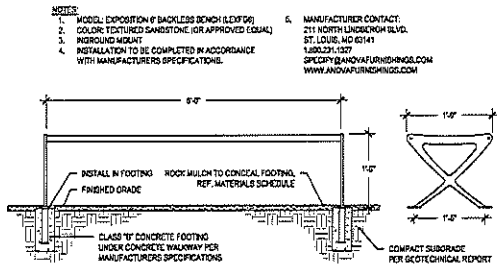
Thank you,

Elisa Klein
Water Conservation Program Supervisor
City of Scottsdale Water Resources
9312 N 94th Street | Scottsdale, AZ 85258

(480) 312-5670
[ScottsdaleAZ.gov/Water](https://www.scottsdaleaz.gov/Water)

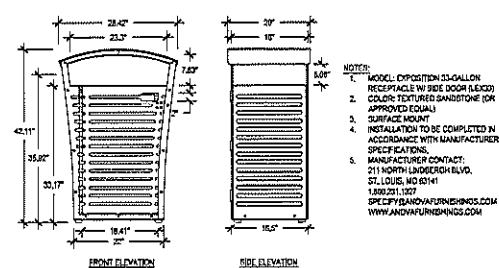
Soak up the latest news from [Water – Use It Wisely!](#)





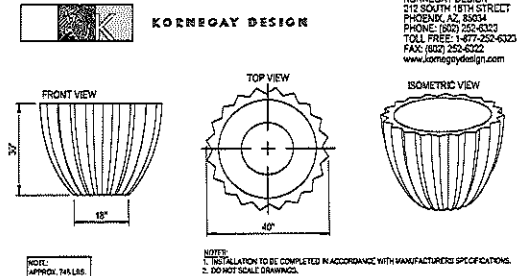
1 BENCH

SCALE: 1" = 1'-0"



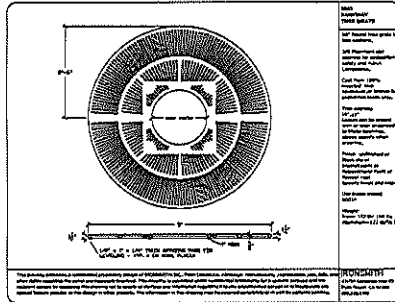
2 WASTE RECEPTACLE

SCALE: 1" = 1'-0"



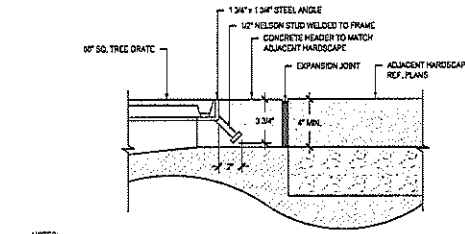
3 PLANTER

SCALE: 3/4" = 1'-0"



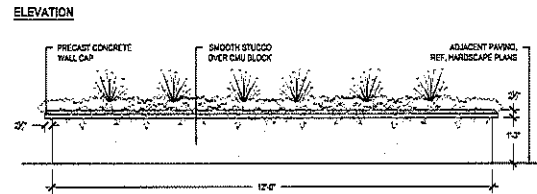
4 TREE GRATE

SCALE: 3/4" = 1'-0"



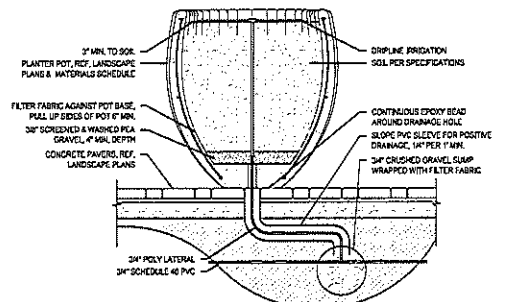
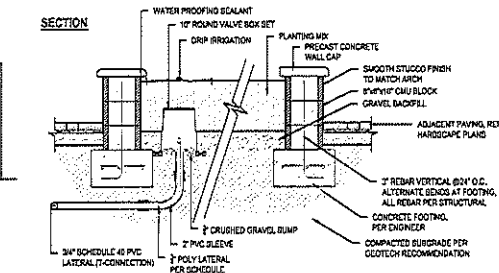
5 TREE GRATE SECTION

SCALE: 3/4" = 1'-0"



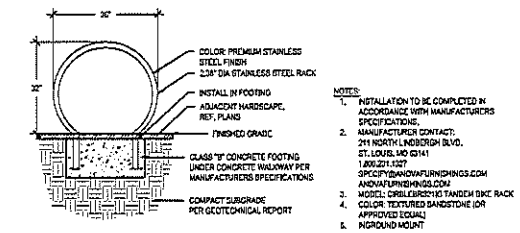
7 RAISED PLANTER - TERRACE LEVEL

SCALE: 3/4" = 1'-0"



6 PLANTER POT AT GRADE

SCALE: 1" = 1'-0"



8 BIKE RACK

SCALE: 1" = 1'-0"

PROJECT

FAIRMONT SCOTSDALE PRINCESS CONVENTION CENTER

211 NORTH LINDSEIGH BLVD. ST. LOUIS, MO 63141 1.800.231.1327 SPECIFY@ANDVAFURNISHINGS.COM ANDVAFURNISHINGS.COM

ARCHITECT OF RECORD

Kolin Altkorn Architects

211 North Lindseigh Blvd. St. Louis, MO 63141 1.800.231.1327 SPECIFY@ANDVAFURNISHINGS.COM ANDVAFURNISHINGS.COM

DATE

10/12/2024

PROJECT NAME

Fairmont Princess Convention Center

PROJECT NUMBER

L2.53