

FAIRMONT SCOTTSDALE PRINCESS VILLAS & BUNGALOWS AT SUNSET BEACH

COS Project No:

7575 EAST PRINCESS DRIVE

SCOTTSDALE, AZ 85255

A.P.N. 215-08-003C

CURRENT ZONING C-2

LANDSCAPE PLAN DRAWING INDEX

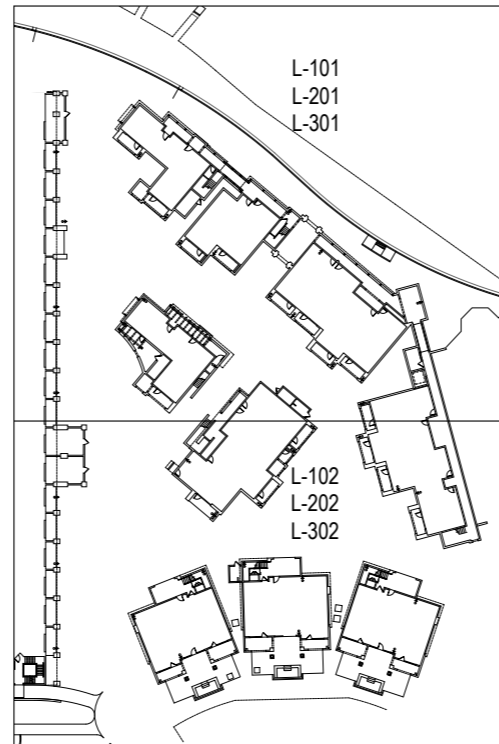
SHEET	SHEET TITLE
L-100	LANDSCAPE COVER SHEET
L-101 - L102	HARDSCAPE PLANS
L-103 - L-106	HARDSCAPE DETAILS
L-200	PLANTING NOTES AND DETAILS
L-201 - L-202	PLANTING PLANS
L-203	PLANTING PLAN VILLAS LEVEL 2
L-204	PLANTING PLAN VILLAS LEVEL 3
L-205	PLANTING DETAILS
L-300	IRRIGATION NOTES AND LEGEND
L-301 - L-302	IRRIGATION PLANS
L-303	IRRIGATION PLAN VILLAS LEVEL 2
L-304	IRRIGATION PLAN VILLAS LEVEL 3
L-305 - L-307	IRRIGATION DETAILS

LANDSCAPE NOTES (CITY OF SCOTTSDALE)

- AREAS OF DECOMPOSED GRANITE WITHOUT PLANT MATERIALS/GROUNDCOVERS SHALL NOT EXCEED DIMENSIONS OF MORE THAN 7-FEET IN ANY ON DIRECTION, MEASURED BETWEEN PLANT CANOPIES AND/OR COVERAGE
- A SINGLE TRUNK TREE'S CALIPER SIZE, THAT IS TO BE EQUAL TO OR LESS THAN 4-INCHES, SHALL BE DETERMINED BY UTILIZING THE SMALLEST DIAMETER OF THE TRUNK 6-INCHES ABOVE FINISHED GRADE ADJACENT TO THE TRUNK. A TREE'S CALIPER SIZE, FOR SINGLE TRUNK TREES THAT ARE TO HAVE A DIAMETER GREATER THAN 4-INCHES SHALL BE DETERMINED BY UTILIZING THE SMALLEST DIAMETER OF THE TRUNK 12-INCHES ABOVE FINISHED GRADE ADJACENT TO THE TRUNK. A MULTIPLE TRUNK TREE'S CALIPER SIZE IS MEASURED AT 6" ABOVE THE LOCATION THAT THE TRUNK SPLITS ORIGINATES, OR 6" ABOVE FINISHED GRADE IF ALL TRUNKS ORIGINATE FROM THE SOIL.
- AREA WITHIN THE SIGHT DISTANCE TRIANGLES TO BE CLEAR OF LANDSCAPING, SIGNS OR OTHER VISIBILITY OBSTRUCTIONS WITH A HEIGHT GREATER THAN 2 FEET. TREES WITHIN THE SIGHT TRIANGLE SHALL HAVE A SINGLE TRUNK AND A CANOPY THAT BEGINS AT 8-FEET IN HEIGHT UPON INSTALLATION. ALL HEIGHTS ARE MEASURED FROM NEAREST STREET LINE ELEVATION. [NONE WITHIN PROJECT SCOPE]
- ALL RIGHTS-OF-WAY ADJACENT TO THIS PROPERTY SHALL BE LANDSCAPED AND MAINTAINED BY THE PROPERTY OWNER. [NONE WITHIN PROJECT SCOPE]
- PRIOR TO THE ESTABLISHMENT OF WATER SERVICE, NON-RESIDENTIAL PROJECTS WITH AN ESTIMATED ANNUAL WATER DEMAND OF TEN (10) ACRE-FEET OR MORE SHALL SUBMIT A CONSERVATION PLAN IN CONFORMANCE WITH SECTIONS 49-245 THROUGH 49-248 OF THE CITY CODE TO THE WATER CONSERVATION OFFICE.
- NO LIGHTING IS APPROVED WITH THE SUBMITTAL.
- THE LANDSCAPE SPECIFICATION SECTION(S) OF THESE PLANS HAVE NOT BEEN REVIEWED AND SHALL NOT BE PART OF THE CITY OF SCOTTSDALE'S APPROVAL.
- ALL SIGNS REQUIRE SEPARATE PERMITS AND APPROVALS
- NEW LANDSCAPING, INCLUDING SALVAGED PLANT MATERIAL, AND LANDSCAPING INDICATED TO REMAIN, WHICH IS DESTROYED, DAMAGED, OR EXPIRES DURING CONSTRUCTION SHALL BE REPLACED WITH LIKE SIZE, KIND AND QUANTITY PRIOR TO THE ISSUANCE OF THE CERTIFICATE OF OCCUPANCY / LETTER OF ACCEPTANCE TO THE SATISFACTION OF THE INSPECTION SERVICES STAFF. [NONE WITHIN PROJECT SCOPE]

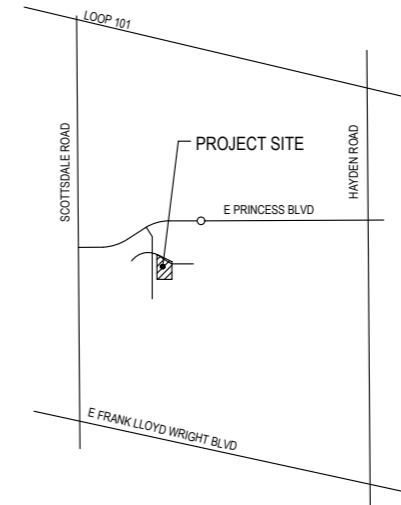
SHEET KEY MAP

N.T.S.



VICINITY MAP

N.T.S.



LANDSCAPE ARCHITECT
GBTWO LANDSCAPE ARCHITECTURE, INC.
6115 NORTH CATTLETRACK RD
SCOTTSDALE, AZ 85250
480-991-3384
CONTACT: LEAH MANBECK

OWNER
STRATEGIC HOTELS & RESORTS
150 N RIVERSIDE PLAZA
SUITE 4270
CHICAGO, IL 60606

ALL LANDSCAPE AREAS AND MATERIALS, INCLUDING THOSE LOCATED IN PUBLIC RIGHTS-OF-WAY, SHALL BE MAINTAINED IN A HEALTHY, NEAT, CLEAN AND WEED-FREE CONDITION. ANSI A300 STANDARD PRACTICES FOR PRUNING, SUPPORT SYSTEMS, AND SAFETY SHALL BE USED FOR MAINTENANCE CRITERIA. THIS SHALL BE THE RESPONSIBILITY OF THE

STRATEGIC HOTELS & RESORTS
Property Owner

LANDSCAPE PLAN APPROVAL		
Case #	Approved by	Date

CONSTRUCTION AND INSTALLATION SHALL BE IN ACCORDANCE WITH THIS PLAN AND ALL DEVIATIONS WILL REQUIRE REAPPROVAL. THE CITY WILL NOT ISSUE A CERTIFICATE OF OCCUPANCY UNTIL INSPECTION SERVICES STAFF APPROVES THE LANDSCAPE INSTALLATION.

**STIPULATION SET
RETAIN FOR RECORDS
APPROVED**

09/18/2025 DATE APPROVED BY

38-DR-2022
7/16/2024



ISSUED FOR:
DESIGN REVIEW BOARD

ISSUANCE	DATE



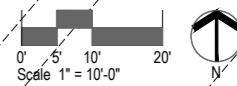
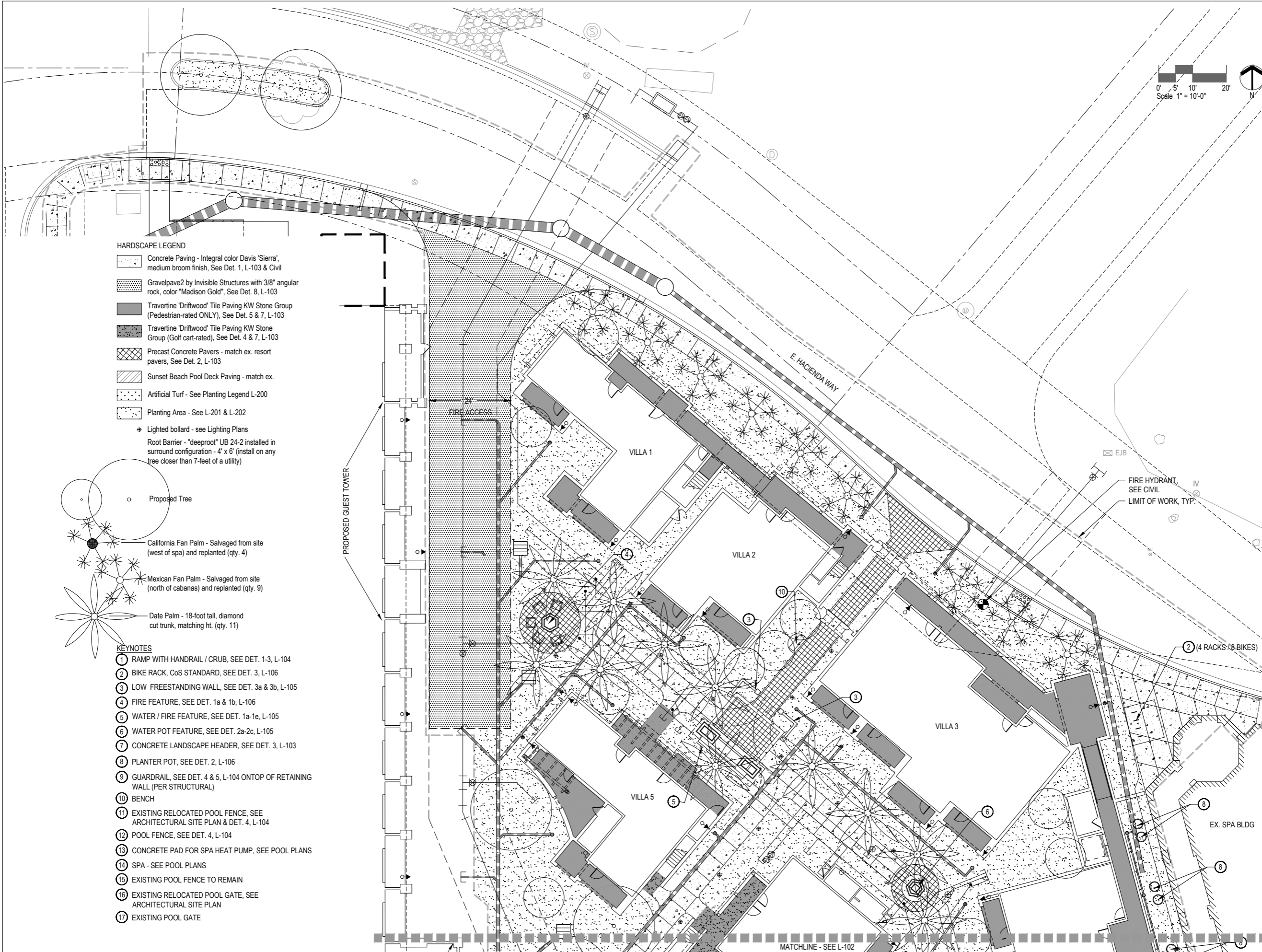
Kollin Altomare Architects
ARCHITECT OF RECORD
Chicago 900 N. Franklin Street, Suite 405-B
Long Beach 4265 E. Conant Street, Suite 101
Long Beach, CA 90808
t: 562.597.8760
kollinaltomare.com

PROJECT
**FAIRMONT SCOTTSDALE PRINCESS
VILLAS & BUNGALOWS AT
SUNSET BEACH**
7575 EAST PRINCESS DRIVE, SCOTTSDALE, AZ 85255
PREPARED FOR: STRATEGIC HOTELS & RESORTS

JOB NUMBER
2022-22
DATE
07/12/2024
SHEET NAME
LANDSCAPE
COVER SHEET

SHEET NUMBER
L-100

KOLLIN ALTOMARE ARCHITECTS, INC. AND GBTWO LANDSCAPE ARCHITECTURE, INC. ARE NOT PROVIDING ANY GUARANTEE OR WARRANTY OF ANY KIND FOR THE DESIGN OR CONSTRUCTION OF THIS PROJECT. THE USER OF THESE PLANS SHALL BE RESPONSIBLE FOR OBTAINING ALL NECESSARY PERMITS AND APPROVALS FROM THE APPROPRIATE AGENCIES AND FOR OBTAINING ALL NECESSARY INFORMATION FROM THE PROPERTY OWNER AND FOR OBTAINING ALL NECESSARY INFORMATION FROM THE CITY OF SCOTTSDALE. THE USER OF THESE PLANS SHALL BE RESPONSIBLE FOR OBTAINING ALL NECESSARY INFORMATION FROM THE PROPERTY OWNER AND FOR OBTAINING ALL NECESSARY INFORMATION FROM THE CITY OF SCOTTSDALE.



ISSUED FOR:
DESIGN REVIEW BOARD

ISSUANCE	DATE

GBtwo
LANDSCAPE ARCHITECTURE, INC.
4118 N. Central Ex. Suite 202
Chicago, IL 60640



Kollin Altomare Architects
ARCHITECT OF RECORD
Chicago
900 N. Franklin Street, Suite 405-B
Chicago, IL 60610
T: 312.471.8160
kollinaltomare.com

**FAIRMONT SCOTTSDALE PRINCESS
VILLAS & BUNGALOWS AT
SUNSET BEACH**
75 WEST PRINCESS DRIVE, SCOTTSDALE, ARIZONA
PREPARED FOR: STRATEGIC HOTELS & RESORTS

PROJECT
**FAIRMONT SCOTTSDALE PRINCESS
VILLAS & BUNGALOWS AT
SUNSET BEACH**

JOB NUMBER
2022-22

DATE
07/12/2024

SHEET NAME
HARDSCAPE PLAN -
NORTH

SHEET NUMBER
L-101

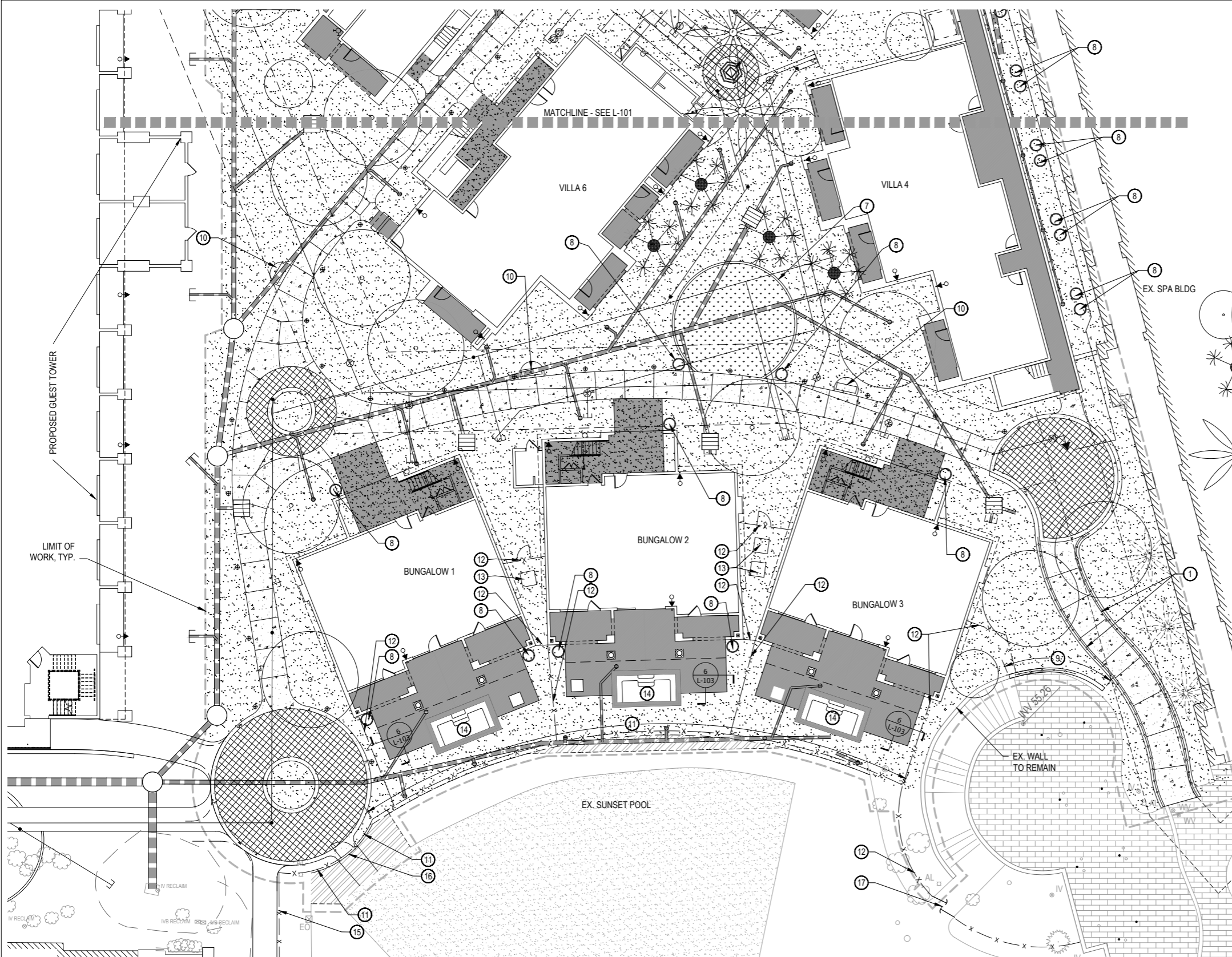
- HARDSCAPE LEGEND**
- Concrete Paving - Integral color Davis 'Sierra', medium broom finish. See Det. 1, L-103 & Civil
 - Gravelpave2 by Invisible Structures with 3/8" angular rock, color "Madison Gold", See Det. 8, L-103
 - Travertine 'Driftwood' Tile Paving KW Stone Group (Pedestrian-rated ONLY), See Det. 5 & 7, L-103
 - Travertine 'Driftwood' Tile Paving KW Stone Group (Golf cart-rated), See Det. 4 & 7, L-103
 - Precast Concrete Pavers - match ex. resort pavers, See Det. 2, L-103
 - Sunset Beach Pool Deck Paving - match ex.
 - Artificial Turf - See Planting Legend L-200
 - Planting Area - See L-201 & L-202

- ⊕ Lighted bollard - see Lighting Plans
- Root Barrier - "deeproot" UB 24-2 installed in surround configuration - 4' x 6' (install on any tree closer than 7-feet of a utility)

- Proposed Tree
- California Fan Palm - Salvaged from site (west of spa) and replanted (qty. 4)
- Mexican Fan Palm - Salvaged from site (north of cabanas) and replanted (qty. 9)
- Date Palm - 18-foot tall, diamond cut trunk, matching ht. (qty. 11)

- KEYNOTES**
- 1 RAMP WITH HANDRAIL / CRUB, SEE DET. 1-3, L-104
 - 2 BIKE RACK, CoS STANDARD, SEE DET. 3, L-106
 - 3 LOW FREESTANDING WALL, SEE DET. 3a & 3b, L-105
 - 4 FIRE FEATURE, SEE DET. 1a & 1b, L-106
 - 5 WATER / FIRE FEATURE, SEE DET. 1a-1e, L-105
 - 6 WATER POT FEATURE, SEE DET. 2a-2c, L-105
 - 7 CONCRETE LANDSCAPE HEADER, SEE DET. 3, L-103
 - 8 PLANTER POT, SEE DET. 2, L-106
 - 9 GUARDRAIL, SEE DET. 4 & 5, L-104 ONTOP OF RETAINING WALL (PER STRUCTURAL)
 - 10 BENCH
 - 11 EXISTING RELOCATED POOL FENCE, SEE ARCHITECTURAL SITE PLAN & DET. 4, L-104
 - 12 POOL FENCE, SEE DET. 4, L-104
 - 13 CONCRETE PAD FOR SPA HEAT PUMP, SEE POOL PLANS
 - 14 SPA - SEE POOL PLANS
 - 15 EXISTING POOL FENCE TO REMAIN
 - 16 EXISTING RELOCATED POOL GATE, SEE ARCHITECTURAL SITE PLAN
 - 17 EXISTING POOL GATE

MATCHLINE - SEE L-102



- HARDSCAPE LEGEND**
- Concrete Paving - Integral color Davis 'Sierra', medium broom finish, See Det. 1, L-103 & Civil
 - Gravelpave2 by Invisible Structures with 3/8" angular rock, color "Madison Gold", See Det. 8, L-103
 - Travertine 'Driftwood' Tile Paving KW Stone Group (Pedestrian-rated ONLY), See Det. 5 & 7, L-103
 - Travertine 'Driftwood' Tile Paving KW Stone Group (Golf cart-rated), See Det. 4 & 7, L-103
 - Precast Concrete Pavers - match ex. resort pavers, See Det. 2, L-103
 - Sunset Beach Pool Deck Paving - match ex.
 - Artificial Turf - See Planting Legend L-200
 - Planting Area - See L-201 & L-202
 - Lighted bollard - see Lighting Plans
 - Root Barrier - "deeproot" UB 24-2 installed in surround configuration - 4' x 6' (install on any tree closer than 7-feet of a utility)

- Proposed Tree
- California Fan Palm - Salvaged from site (west of spa) and replanted (qty. 4)
- Mexican Fan Palm - Salvaged from site (north of cabanas) and replanted (qty. 9)
- Date Palm - 18-foot tall, diamond cut trunk, matching ht. (qty. 11)

- KEYNOTES**
- 1 RAMP WITH HANDRAIL / CRUB, SEE DET. 1-3, L-104
 - 2 BIKE RACK, CoS STANDARD, SEE DET. 3, L-106
 - 3 LOW FREESTANDING WALL, SEE DET. 3a & 3b, L-105
 - 4 FIRE FEATURE, SEE DET. 1a & 1b, L-106
 - 5 WATER / FIRE FEATURE, SEE DET. 1a-1e, L-105
 - 6 WATER POT FEATURE, SEE DET. 2a-2c, L-105
 - 7 CONCRETE LANDSCAPE HEADER, SEE DET. 3, L-103
 - 8 PLANTER POT, SEE DET. 2, L-106
 - 9 GUARDRAIL, SEE DET. 4 & 5, L-104 ONTOP OF RETAINING WALL (PER STRUCTURAL)
 - 10 BENCH
 - 11 EXISTING RELOCATED POOL FENCE, SEE ARCHITECTURAL SITE PLAN & DET. 4, L-104
 - 12 POOL FENCE, SEE DET. 4, L-104
 - 13 CONCRETE PAD FOR SPA HEAT PUMP, SEE POOL PLANS
 - 14 SPA - SEE POOL PLANS
 - 15 EXISTING POOL FENCE TO REMAIN
 - 16 EXISTING RELOCATED POOL GATE, SEE ARCHITECTURAL SITE PLAN
 - 17 EXISTING POOL GATE

ISSUED FOR:
DESIGN REVIEW BOARD

ISSUANCE	DATE

GBtwo
LANDSCAPE ARCHITECTURE, INC.
4115 N. Central Ex. Suite 200
Chicago, IL 60610



Kollin Altomare Architects
ARCHITECT OF RECORD
Chicago
900 N. Franklin Street, Suite 405-B
Chicago, IL 60610
T: 312.471.8160
kollinaltomare.com

**FAIRMONT SCOTTSDALE PRINCESS
VILLAS & BUNGALOWS AT
SUNSET BEACH**
75 PRINCESS DRIVE, SCOTTSDALE, ARIZONA
PREPARED FOR: STRATEGIC HOTELS & RESORTS

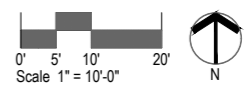
PROJECT
**FAIRMONT SCOTTSDALE PRINCESS
VILLAS & BUNGALOWS AT
SUNSET BEACH**

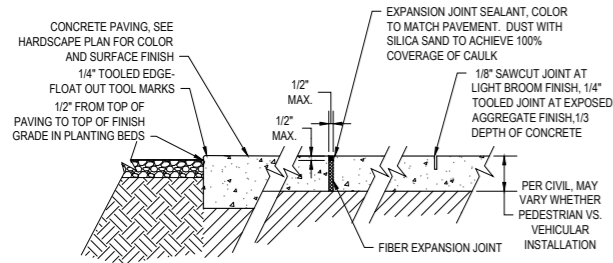
JOB NUMBER
2022-22

DATE
07/12/2024

SHEET NAME
HARDSCAPE PLAN -
SOUTH

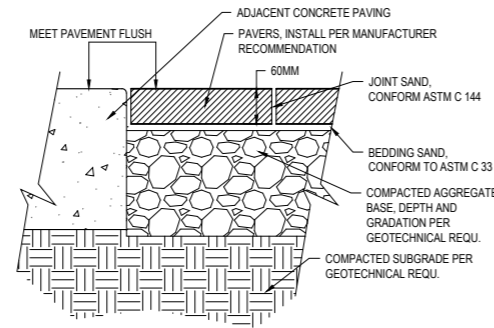
SHEET NUMBER
L-102



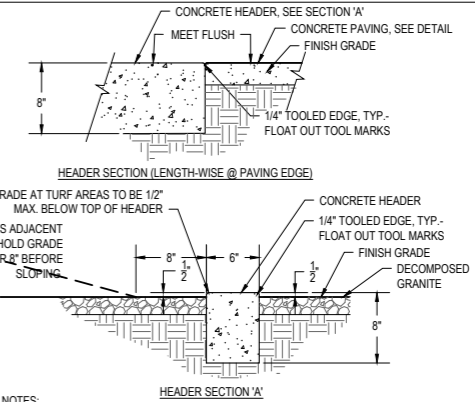
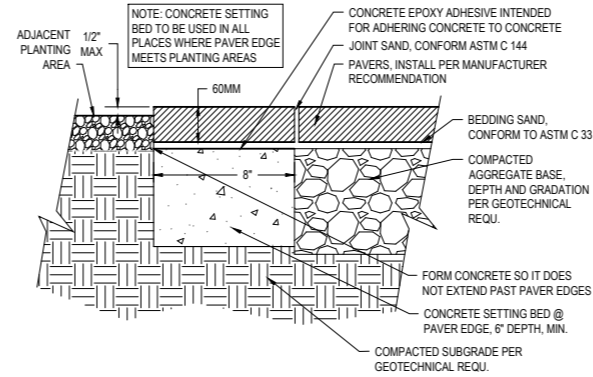


- NOTES:
1. THIS DETAIL SHOWS JOINTS AND FINISHES ONLY. SEE CIVIL PLANS FOR CONCRETE PAVING CONSTRUCTION DETAIL.
 2. WALKWAYS SHOWN ON PLANS AS HAVING CURVILINEAR SHAPES ARE TO HAVE SMOOTH RADII AND CURVE TRANSITIONS, AND ARE TO BE FORMED TO ACHIEVE THIS CONDITION.
 3. EXPANSION JOINT DETAIL APPLIES TO ALL CONCRETE FLAT WORK UNLESS OTHERWISE NOTED ON PLANS.
 4. INSTALL VOID CAP OVER TOP EDGE OF EXPANSION JOINT PRIOR TO PLACING CONCRETE AND REMOVE ONLY PRIOR TO CAULKING.
 5. PROVIDE SAMPLE MOCKUP, 5'X5' MIN., OF EACH CONCRETE FINISH AND PROVIDE ONE SAMPLE, 5 L.F., OF EACH JOINT TYPE.
 6. PROVIDE SHOP DRAWINGS TO SHOW PROPOSED LOCATIONS OF EXPANSION JOINTS (MIN. REQUIRED PER MAG STANDARDS) AND BROOM FINISH DIRECTION (WHERE APPLICABLE) FOR APPROVAL BY L.A. PRIOR TO INSTALLATION.

1 CONCRETE PAVING SCALE 1-1/2" = 1'-0"

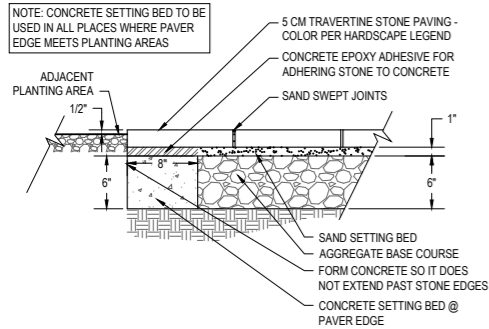


2 PAVER DETAILS SCALE 3" = 1'-0"

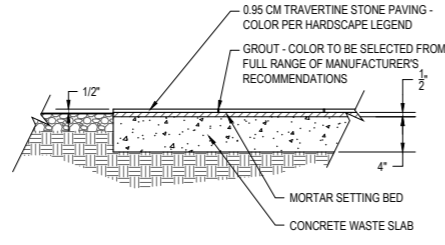


- NOTES:
1. STANDARD GRAY (NO COLOR) CONCRETE
 2. PROVIDE EXPANSION JOINT AT 20'-0" O.C. WITH 24" LONG #4 REBAR LINKING THE SEPARATE POURS - GREASE ONE END OF BAR.
 3. LANDSCAPE ARCHITECT SHALL APPROVE FORMWORK AND STAKING PRIOR TO PLACING CONCRETE.
 4. FORM STAKING SHALL NOT ALLOW DEFORMING OR LEAKING.
 5. HEADER IS NOT INTENDED TO RETAIN GRADE.
 6. HEADER TO BE FORMED - NOT EXTRUDED

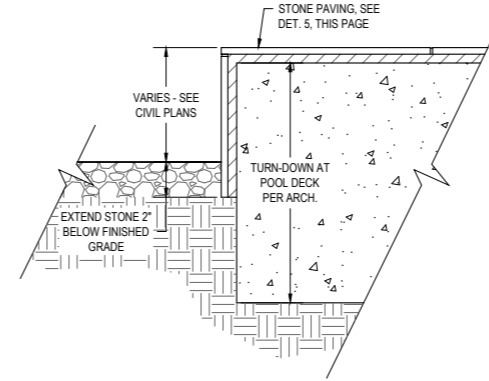
3 CONCRETE LANDSCAPE HEADER SCALE 1-1/2" = 1'-0"



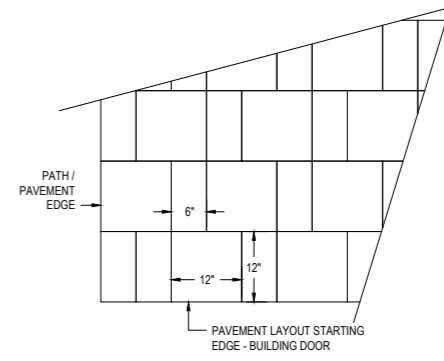
4 STONE PAVING ON AGG. BASE- SECTION SCALE 1-1/2" = 1'-0"



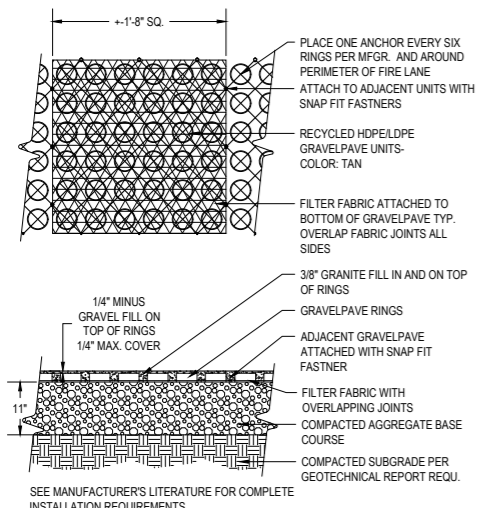
5 STONE PAVING ON CONC. SLAB- SECTION SCALE 1-1/2" = 1'-0"



6 POOL DECK STONE PAVING- SECTION SCALE 3" = 1'-0"



7 TYPICAL STONE PAVING LAYOUT- PLAN SCALE 1" = 1'-0"



8 FIRE LANE - GRAVELPAVE2 SCALE 1-1/2" = 1'-0"

ISSUED FOR:
DESIGN REVIEW BOARD

ISSUANCE	DATE

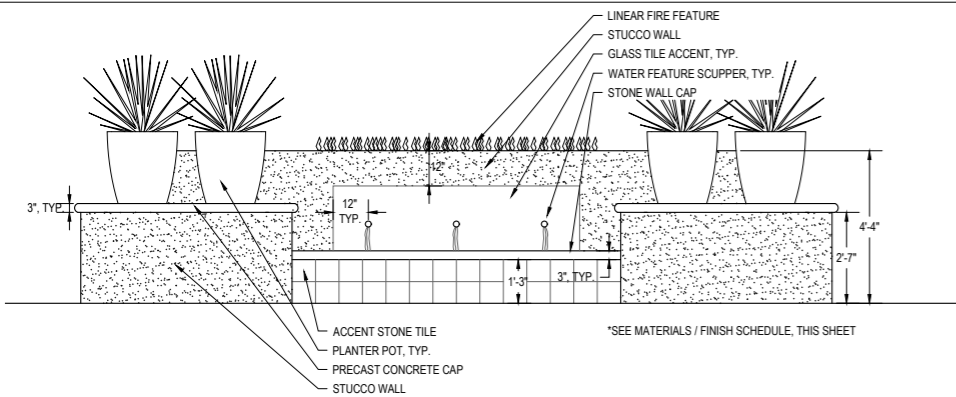


Kollin Altomare Architects
 ARCHITECT OF RECORD
 Chicago, IL 60610
 T: 312.471.8160
 kollinaltomare.com

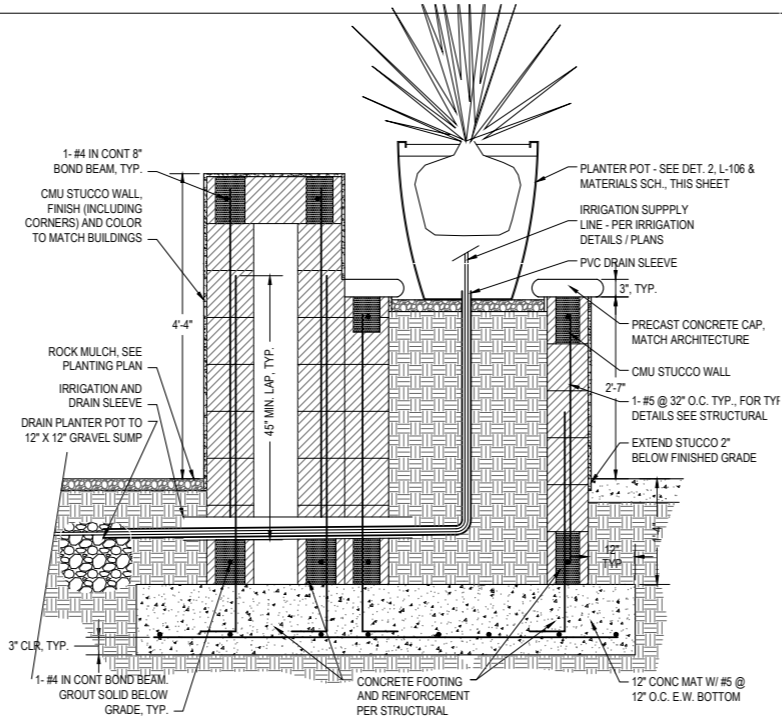
FAIRMONT SCOTTSDALE PRINCESS VILLAS & BUNGALOWS AT SUNSET BEACH
 75 WEST PRINCESS DRIVE, SCOTTSDALE, ARIZONA
 PREPARED FOR: STRATEGIC HOTELS & RESORTS

PROJECT: FAIRMONT SCOTTSDALE PRINCESS VILLAS & BUNGALOWS AT SUNSET BEACH
 JOB NUMBER: 2022-22
 DATE: 07/12/2024
 SHEET NAME: HARDSCAPE DETAILS
 SHEET NUMBER: L-103

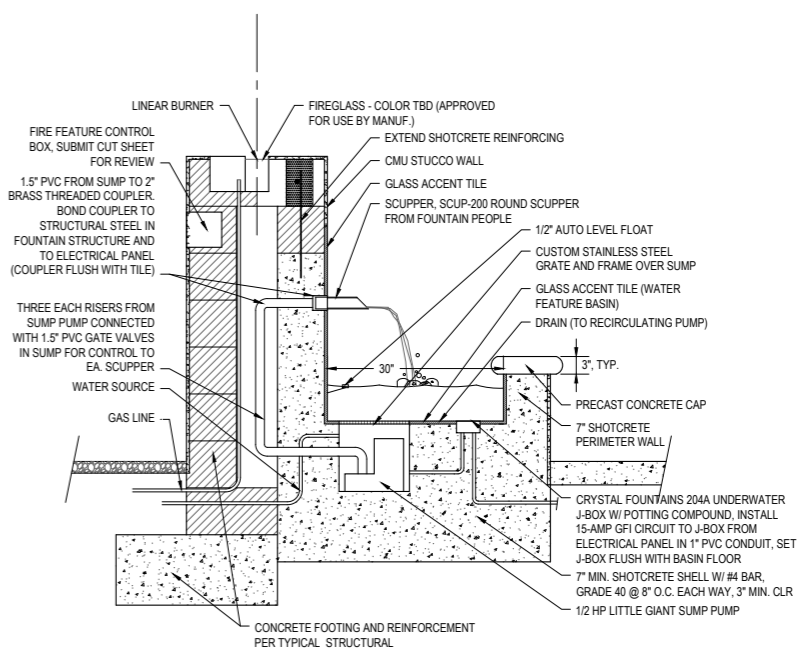
REGULAR ARCHITECTURE ARCHITECTS, AND CONSULTANTS' LIABILITY INSURANCE POLICY COVERAGE DOES NOT EXTEND TO ANY WORK PERFORMED BY ANY PERSON OR ENTITY THAT IS NOT A LICENSED ARCHITECT OR REGISTERED PROFESSIONAL ENGINEER OR REGISTERED PROFESSIONAL LANDSCAPE ARCHITECT.



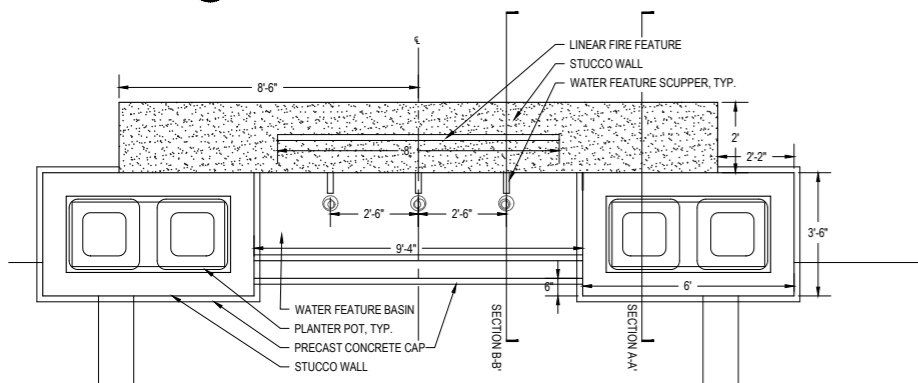
1a WATER / FIRE FEATURE - ELEVATION
SCALE 1/2" = 1'-0"



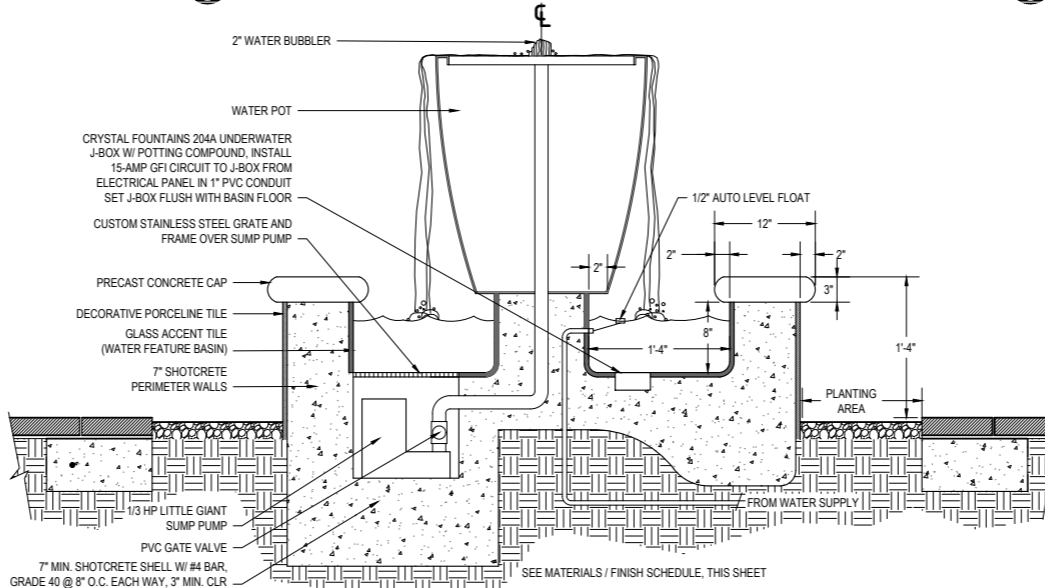
1c WATER / FIRE FEATURE - SECTION A-A'
SCALE 1" = 1'-0"



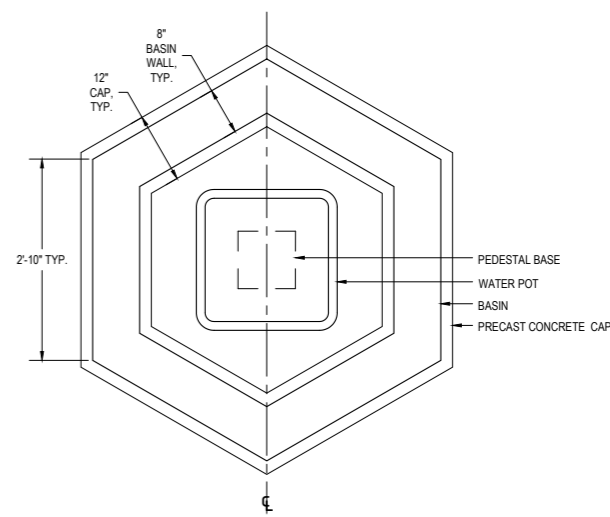
1d WATER / FIRE FEATURE - SECTION B-B'
SCALE 1" = 1'-0"



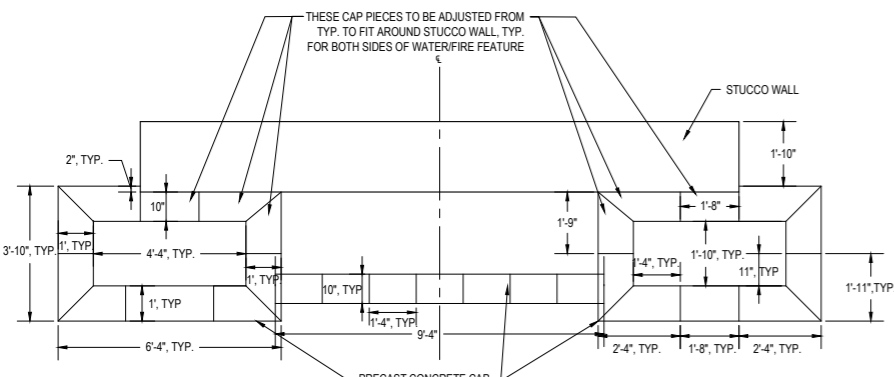
1b WATER / FIRE FEATURE - PLAN
SCALE 1/2" = 1'-0"



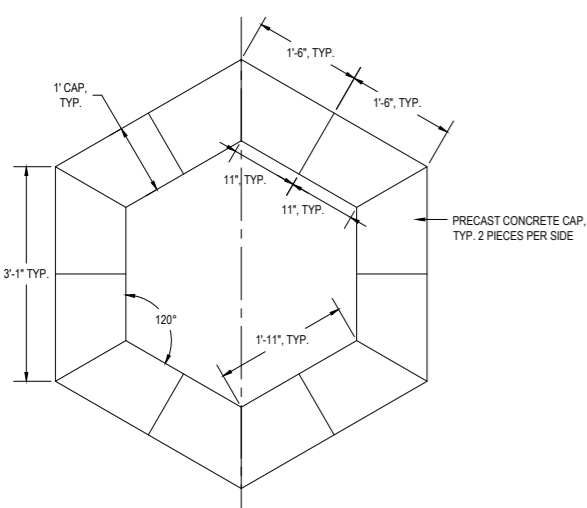
2a WATER POT FEATURE - SECTION
SCALE 1-1/2" = 1'-0"



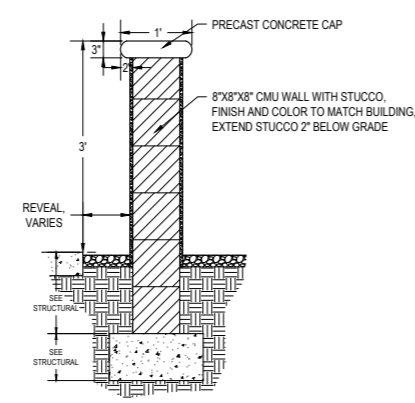
2b WATER POT FEATURE - PLAN
SCALE 1" = 1'-0"



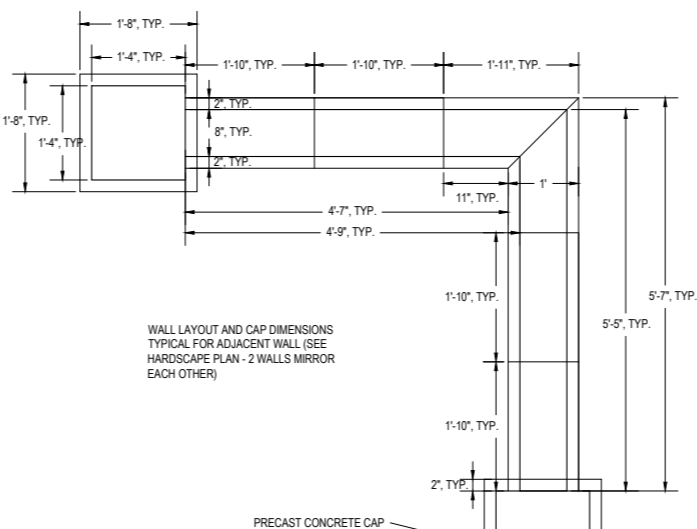
1e WATER / FIRE FEATURE PRECAST CONCRETE CAP - PLAN
SCALE 1/2" = 1'-0"



2c WATER POT PRECAST CONCRETE CAP - PLAN
SCALE 1" = 1'-0"



3a WALL - SECTION
SCALE 1" = 1'-0"



3b WALL LAYOUT & CAP - PLAN
SCALE 1" = 1'-0"

- MATERIALS / FINISH SCHEDULE:**
- STUCCO SITE WALLS: FINISH TO MATCH ARCHITECTURAL. COLOR SW 7024 'FUNCTIONAL GREY'
 - DECORATIVE ACCENT TILE: MARAZZI FONDAMENTA FMS 'GREY DECO' (DAL TILE)
 - GLASS ACCENT TILE (WATER FEATURES): NOLBLE TILE SUPPLY. GLASS MOSAIC NNR816
 - PRECAST CONCRETE CAP: INTEGRAL COLOR DAVIS 'SIERRA'. LIGHT SAND FINISH
 - PLANTER POT IN WATER/FIRE FEATURE (DET. 1a, THIS SHEET): TOURNESOL SITEWORKS DOWNTOWN PLANTER DR-2400, IN FRP (FIBERGLASS), 'TERRA COTTA' T-0 FINISH (SMOOTH)
 - WATER POT (DET. 2a, THIS SHEET): TOURNESOL SITEWORKS DOWNTOWN PLANTER DR-2400, IN FRP (FIBERGLASS), 'PUDDLE' T-0 FINISH (SMOOTH)
 - SITE PLANTER POT (KEYNOTE 8): STONE YARD INC. BARRO PLANTER, P43-R3135 IN FIBERSTONE, 'FERRIC' FINISH, W/ DRAIN HOLE
 - FIRE MEDIA (DET. 1a, L-106): BRONZE GLASS MEDIA
 - FENCE / GATE PAINT COLOR: FINISH TO MATCH ARCHITECTURAL METAL. COLOR SW 7089 'IRON ORE'
- SUBMIT SAMPLES / CUT SHEETS FOR ALL MATERIALS AND FINISHES

ISSUED FOR:
DESIGN REVIEW BOARD

ISSUANCE	DATE

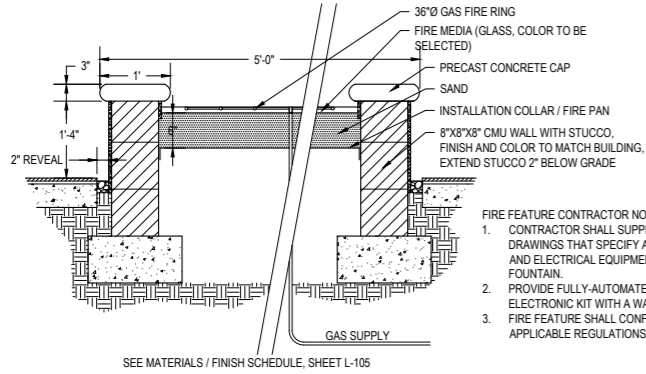


Kollin Altomare Architects
Chicago
900 N. Franklin Street, Suite 405-B
Chicago, IL 60610
T: 312.471.8160
kollinaltomare.com

**FAIRMONT SCOTTSDALE PRINCESS
VILLAS & BUNGALOWS AT
SUNSET BEACH**
PREPARED FOR: STRATEGIC HOTELS & RESORTS

JOB NUMBER
2022-22
DATE
07/12/2024
SHEET NAME
HARDSCAPE DETAILS

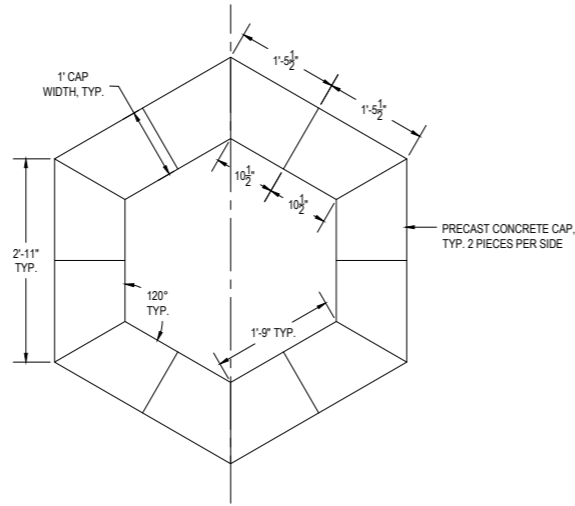
SHEET NUMBER
L-105



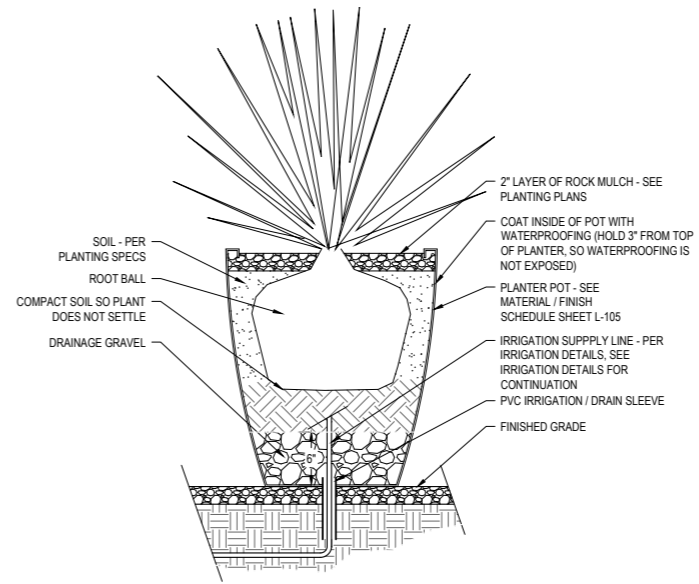
- FIRE FEATURE CONTRACTOR NOTES:**
1. CONTRACTOR SHALL SUPPLY SHOP DRAWINGS THAT SPECIFY ALL PLUMBING AND ELECTRICAL EQUIPMENT FOR FOUNTAIN.
 2. PROVIDE FULLY-AUTOMATED IGNITION ELECTRONIC KIT WITH A WALL SWITCH
 3. FIRE FEATURE SHALL CONFORM TO ALL APPLICABLE REGULATIONS.

SEE MATERIALS / FINISH SCHEDULE, SHEET L-105

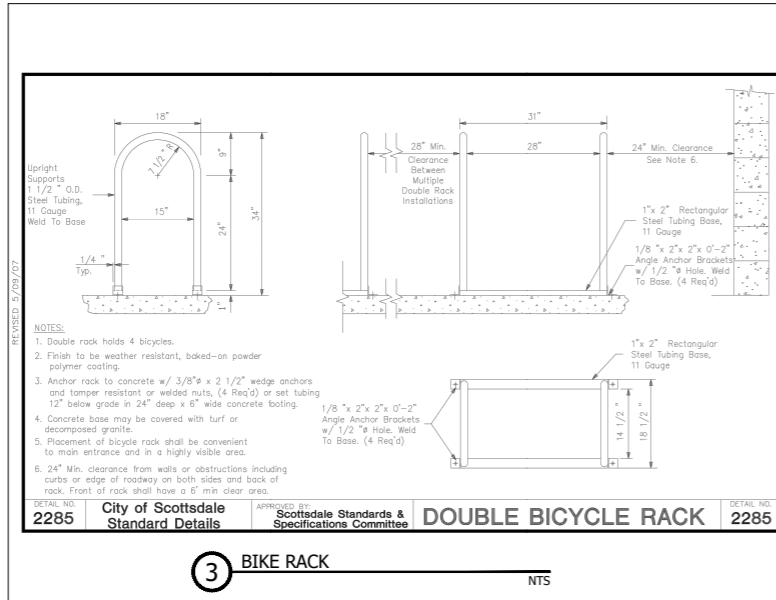
1a) FIRE FEATURE - SECTION
SCALE 1" = 1'-0"



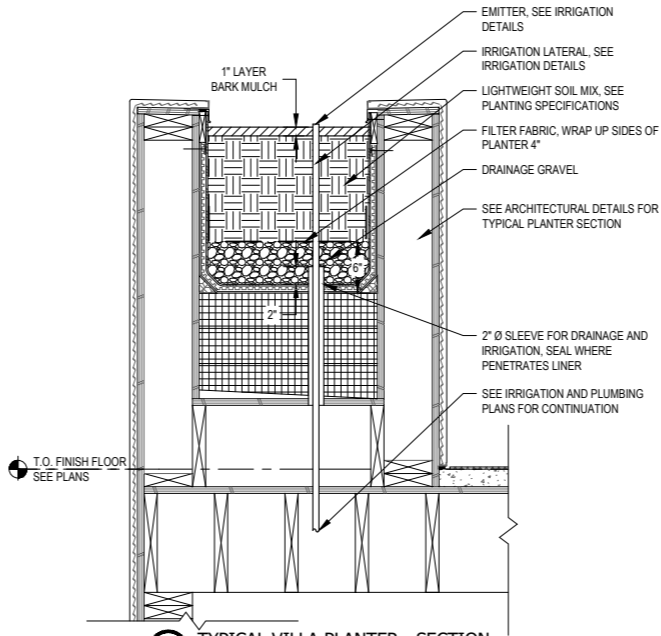
1b) FIRE FEATURE PRECAST CONCRETE CAP - PLAN
SCALE 1" = 1'-0"



2) PLANTER POT
SCALE 1-1/2" = 1'-0"



3) BIKE RACK
NTS



4) TYPICAL VILLA PLANTER - SECTION
SCALE 1-1/2" = 1'-0"

ISSUED FOR:
DESIGN REVIEW BOARD

ISSUANCE	DATE

GBtwo
LANDSCAPE ARCHITECTURE, INC.
615 N. Central St., Suite 402 B, Scottsdale, AZ 85261

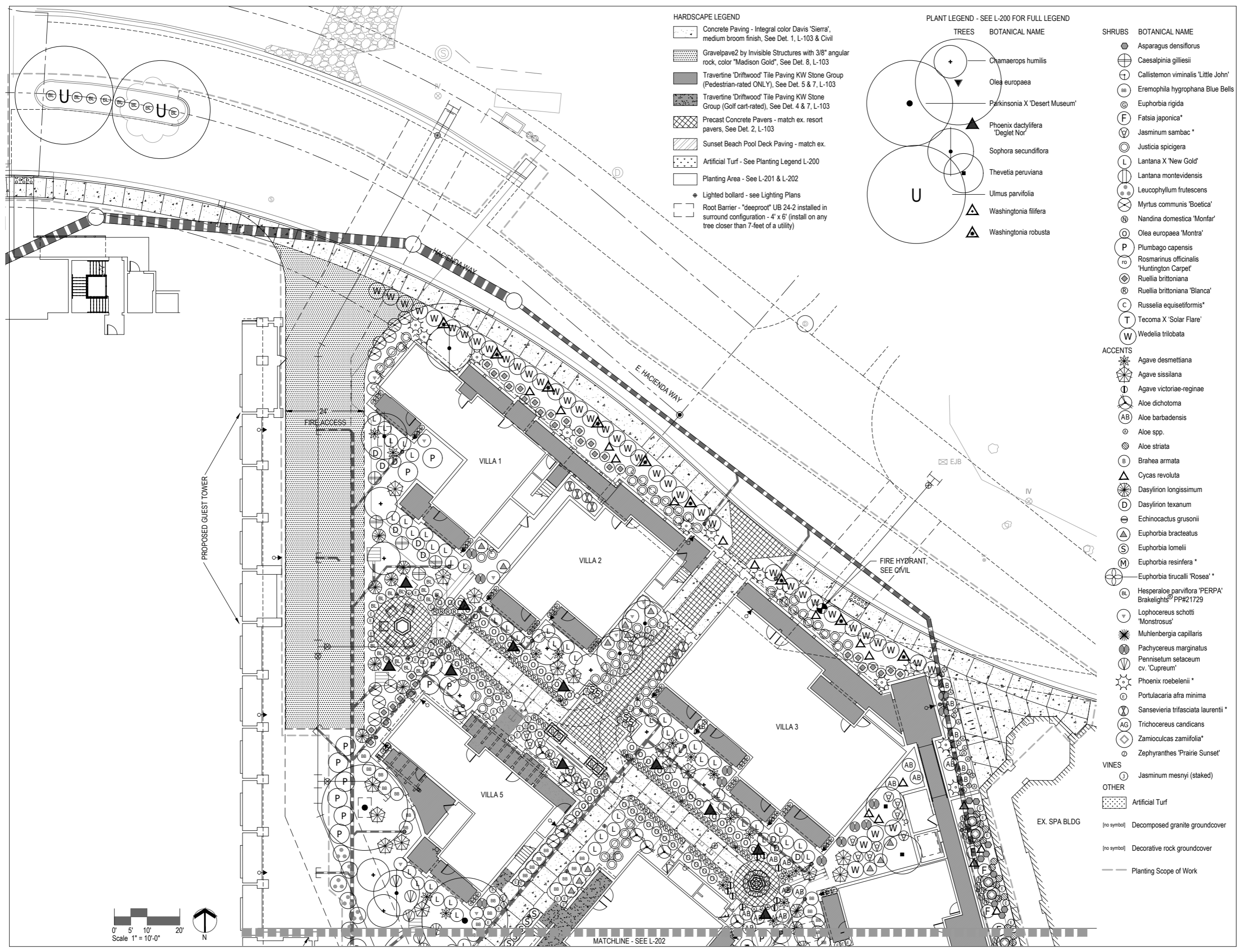


Kollin Altomare Architects
Chicago, IL 60610
900 N. Franklin Street, Suite 405-B
Chicago, IL 60610
T: 312.471.8160
kollinaltomare.com

ARCHITECT OF RECORD
Kollin Altomare Architects
Long Beach, CA 90808
4265 E. Conant Street, Suite 101
Long Beach, CA 90808
T: 562.597.8760
kollinaltomare.com

PROJECT
**FAIRMONT SCOTTSDALE PRINCESS
VILLAS & BUNGALOWS AT
SUNSET BEACH**
7575 E. PRINCESS DRIVE, SCOTTSDALE, AZ 85265
PREPARED FOR: STRATEGIC HOTELS & RESORTS

JOB NUMBER
2022-22
DATE
07/12/2024
SHEET NAME
HARDSCAPE DETAILS
SHEET NUMBER
L-106



- HARDSCAPE LEGEND**
- Concrete Paving - Integral color Davis 'Sierra', medium broom finish, See Det. 1, L-103 & Civil
 - Gravelpave2 by Invisible Structures with 3/8" angular rock, color "Madison Gold", See Det. 8, L-103
 - Travertine 'Driftwood' Tile Paving KW Stone Group (Pedestrian-rated ONLY), See Det. 5 & 7, L-103
 - Travertine 'Driftwood' Tile Paving KW Stone Group (Golf cart-rated), See Det. 4 & 7, L-103
 - Precast Concrete Pavers - match ex. resort pavers, See Det. 2, L-103
 - Sunset Beach Pool Deck Paving - match ex.
 - Artificial Turf - See Planting Legend L-200
 - Planting Area - See L-201 & L-202
 - Lighted bollard - see Lighting Plans
 - Root Barrier - "deeproot" UB 24-2 installed in surround configuration - 4' x 6' (install on any tree closer than 7-feet of a utility)

- PLANT LEGEND - SEE L-200 FOR FULL LEGEND**
- TREES**
- Chamaerops humilis
 - Olea europaea
 - Parkinsonia X 'Desert Museum'
 - Phoenix dactylifera 'Deglet Nor'
 - Sophora secundiflora
 - Thevetia peruviana
 - Ulmus parvifolia
 - Washingtonia filifera
 - Washingtonia robusta

- SHRUBS**
- BOTANICAL NAME**
- Asparagus densiflorus
 - Caesalpinia gilliesii
 - Callistemon viminalis 'Little John'
 - Eremophila hygrophana Blue Bells
 - Euphorbia rigida
 - Fatsia japonica*
 - Jasminum sambac*
 - Justicia spicigera
 - Lantana X 'New Gold'
 - Lantana montevidensis
 - Leucophyllum frutescens
 - Myrtus communis 'Boetica'
 - Nandina domestica 'Monfar'
 - Olea europaea 'Montra'
 - Plumbago capensis
 - Rosmarinus officinalis 'Huntington Carpet'
 - Ruellia brittoniana
 - Ruellia brittoniana 'Blanca'
 - Russelia equisetiformis*
 - Tecoma X 'Solar Flare'
 - Wedelia trilobata
- ACCENTS**
- Agave desmettiana
 - Agave sisilana
 - Agave victoriae-reginae
 - Aloe dichotoma
 - Aloe barbadensis
 - Aloe spp.
 - Aloe striata
 - Brahea armata
 - Cycas revoluta
 - Dasylirion longissimum
 - Dasylirion texanum
 - Echinocactus grusonii
 - Euphorbia bracteatus
 - Euphorbia lomelii
 - Euphorbia resinifera*
 - Euphorbia tirucalli 'Rosea'*
 - Hesperaloe parviflora 'PERPA' Brakelights® PP#21729
 - Lophocereus schottii 'Monstrosus'
 - Muhlenbergia capillaris
 - Pachycereus marginatus
 - Pennisetum setaceum cv. 'Cupreum'
 - Phoenix roebelenii*
 - Portulacaria afra minima
 - Sansevieria trifasciata laurentii*
 - Trichocereus candicans
 - Zamioculcas zamiifolia*
 - Zephyranthes 'Prairie Sunset'
- VINES**
- Jasminum mesnyi (staked)
- OTHER**
- Artificial Turf
 - Decomposed granite groundcover
 - Decorative rock groundcover
 - Planting Scope of Work

ISSUED FOR:
DESIGN REVIEW BOARD

ISSUANCE	DATE

GBtwo
LANDSCAPE ARCHITECTURE, INC.
611 N. Central St. Suite 402
Chicago, IL 60610



Kollin Altomare Architects
ARCHITECT OF RECORD
Chicago
900 N. Franklin Street, Suite 405-B
Chicago, IL 60610
T: 312.471.8160
kollinaltomare.com

**FAIRMONT SCOTTSDALE PRINCESS
VILLAS & BUNGALOWS AT
SUNSET BEACH**
75 EAST PRINCESS DRIVE, SCOTTSDALE, ARIZONA
PREPARED FOR: STRATEGIC HOTELS & RESORTS

PROJECT: FAIRMONT SCOTTSDALE PRINCESS VILLAS & BUNGALOWS AT SUNSET BEACH
JOB NUMBER: 2022-22
DATE: 07/12/2024
SHEET NAME: PLANTING PLAN - NORTH
SHEET NUMBER: **L-201**

ISSUANCE	DATE



Kollin Altomare Architects
ARCHITECT OF RECORD
Chicago, IL 60610
T: 312.471.7810
kollinaltomare.com

**FAIRMONT SCOTTSDALE PRINCESS
VILLAS & BUNGALOWS AT
SUNSET BEACH**
75 EAST PRINCESS DRIVE, SCOTTSDALE, ARIZONA
PREPARED FOR: STRATEGIC HOTELS & RESORTS

PROJECT: FAIRMONT SCOTTSDALE PRINCESS VILLAS & BUNGALOWS AT SUNSET BEACH
JOB NUMBER: 2022-22
DATE: 07/12/2024
SHEET NAME: PLANTING PLAN - SOUTH

HARDSCAPE LEGEND

- Concrete Paving - Integral color Davis 'Sierra', medium broom finish, See Det. 1, L-103 & Civil
- Gravelpave2 by Invisible Structures with 3/8" angular rock, color "Madison Gold", See Det. 8, L-103
- Travertine 'Driftwood' Tile Paving KW Stone Group (Pedestrian-rated ONLY), See Det. 5 & 7, L-103
- Travertine 'Driftwood' Tile Paving KW Stone Group (Golf cart-rated), See Det. 4 & 7, L-103
- Precast Concrete Pavers - match ex. resort pavers, See Det. 2, L-103
- Sunset Beach Pool Deck Paving - match ex.
- Artificial Turf - See Planting Legend L-200
- Planting Area - See L-201 & L-202
- Lighted bollard - see Lighting Plans
- Root Barrier - "deeproot" UB 24-2 installed in surround configuration - 4' x 6' (install on any tree closer than 7-feet of a utility)

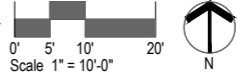
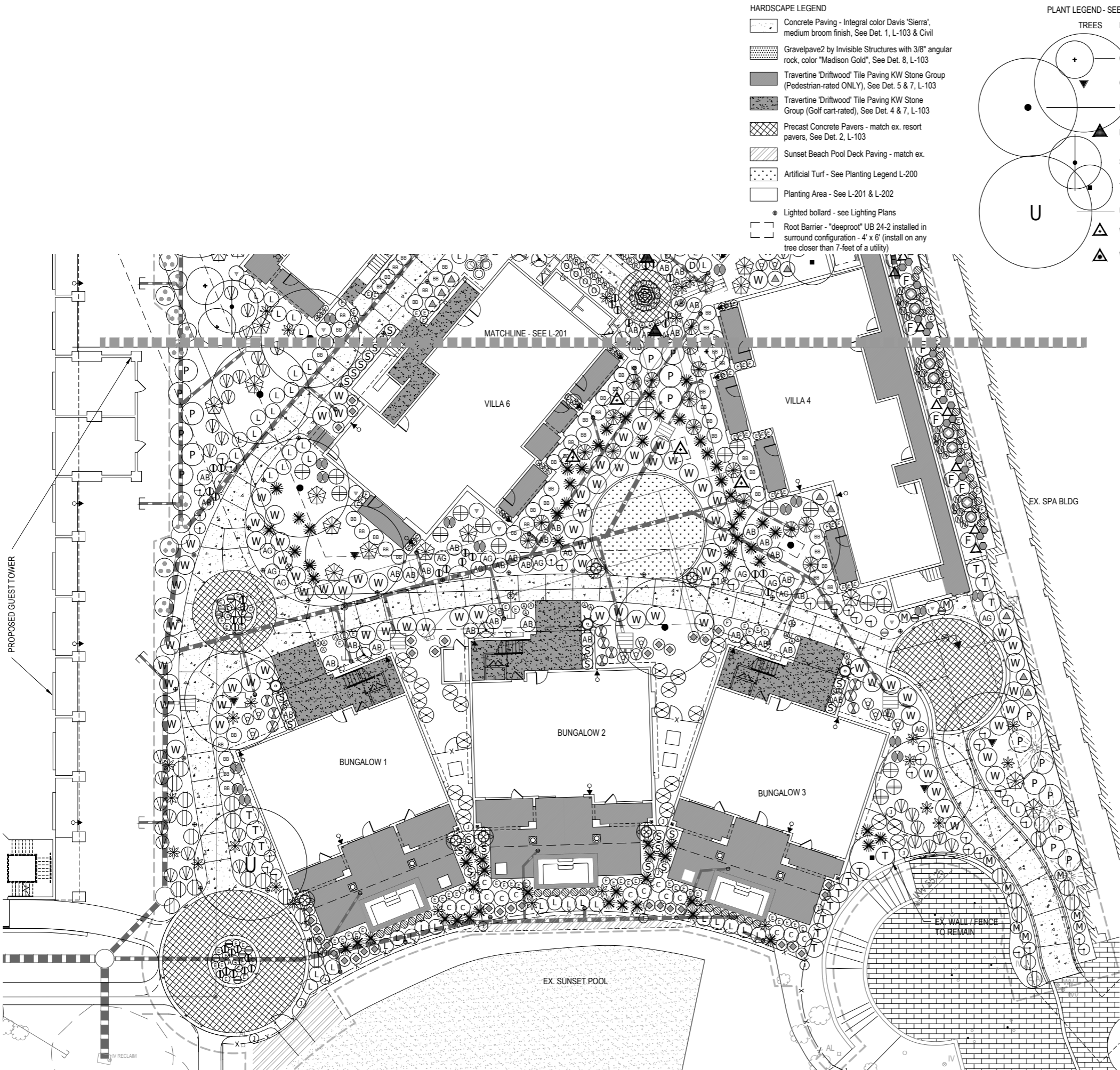
PLANT LEGEND - SEE L-200 FOR FULL LEGEND

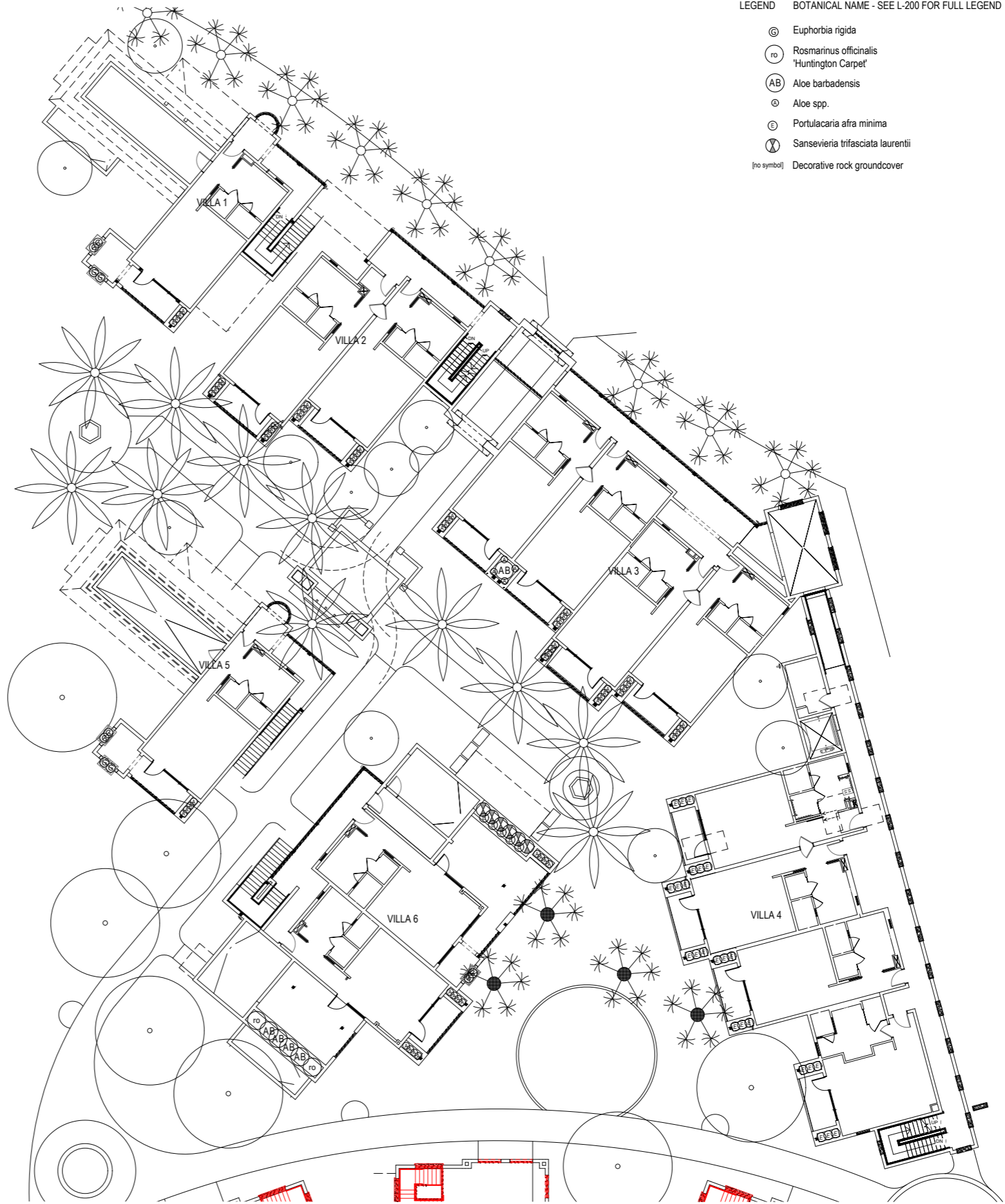
- TREES**
- Chamaerops humilis
 - Olea europaea
 - Parkinsonia X 'Desert Museum'
 - Phoenix dactylifera 'Deglet Nor'
 - Sophora secundiflora
 - Thevetia peruviana
 - Ulmus parvifolia
 - Washingtonia filifera
 - Washingtonia robusta

- SHRUBS**
- Asparagus densiflorus
 - Caesalpinia gilliesii
 - Callistemon viminalis 'Little John'
 - Eremophila hygrophana Blue Bells
 - Euphorbia rigida
 - Fatsia japonica*
 - Jasminum sambac *
 - Justicia spicigera
 - Lantana X 'New Gold'
 - Lantana montevidensis
 - Leucophyllum frutescens
 - Myrtus communis 'Boetica'
 - Nandina domestica 'Monfar'
 - Olea europaea 'Montra'
 - Plumbago capensis
 - Rosmarinus officinalis 'Huntington Carpet'
 - Ruellia brittoniana
 - Ruellia brittoniana 'Blanca'
 - Russelia equisetiformis*
 - Tecoma X 'Solar Flare'
 - Wedelia trilobata

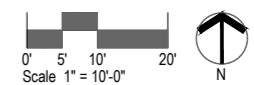
- ACCENTS**
- Agave desmettiana
 - Agave sisillana
 - Agave victoriae-reginae
 - Aloe dichotoma
 - Aloe barbadensis
 - Aloe spp.
 - Aloe striata
 - Brahea armata
 - Cycas revoluta
 - Dasylirion longissimum
 - Dasylirion texanum
 - Echinocactus grusonii
 - Euphorbia bracteatus
 - Euphorbia lomelii
 - Euphorbia resinifera *
 - Euphorbia tirucalli 'Rosea' *
 - Hesperaloe parviflora 'PERPA' Brakelights® PP#21729
 - Lophocereus schottii 'Monstrosus'
 - Muhlenbergia capillaris
 - Pachycereus marginatus
 - Pennisetum setaceum cv. 'Cupreum'
 - Phoenix roebelenii *
 - Portulacaria afra minima
 - Sansevieria trifasciata laurentii *
 - Trichocereus candicans
 - Zamioculcas zamiifolia*
 - Zephyranthes 'Prairie Sunset'

- VINES**
- Jasminum mesnyi (staked)
- OTHER**
- Artificial Turf
 - Decomposed granite groundcover
 - Decorative rock groundcover
 - Planting Scope of Work





- LEGEND BOTANICAL NAME - SEE L-200 FOR FULL LEGEND
- ⊙ Euphorbia rigida
 - ⊙ ro Rosmarinus officinalis
"Huntington Carpet"
 - ⊙ AB Aloe barbadensis
 - ⊙ Aloe spp.
 - ⊙ Portulacaria afra minima
 - ⊙ Sansevieria trifasciata laurentii
 - [no symbol] Decorative rock groundcover



ISSUED FOR:
DESIGN REVIEW BOARD

ISSUANCE	DATE

GBtwo
LANDSCAPE ARCHITECTURE, INC.
4115 N. Central Ex. Suite 400 Chicago, IL 60641



ARCHITECT OF RECORD
Kollin Altomare Architects
Chicago
900 N. Franklin Street, Suite 405-B
Chicago, IL 60610
T: 312.471.7870
kollinaltomare.com

PROJECT
**FAIRMONT SCOTTSDALE PRINCESS
VILLAS & BUNGALOWS AT
SUNSET BEACH**
75 WEST PRINCESS DRIVE, SCOTTSDALE, ARIZONA
PREPARED FOR: STRATEGIC HOTELS & RESORTS

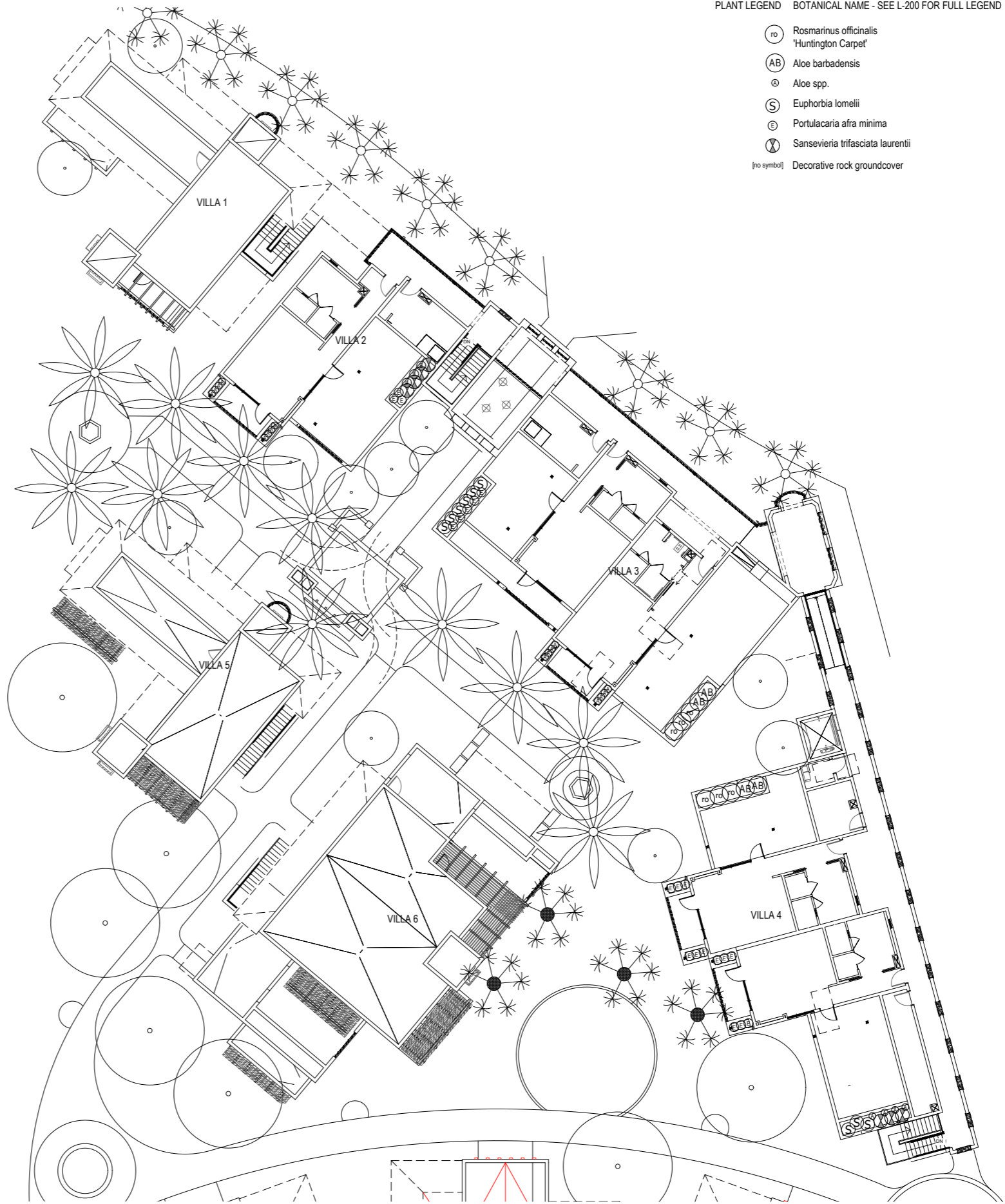
JOB NUMBER
2022-22

DATE
07/12/2024

SHEET NAME
PLANTING PLAN -
VILLAS - LEVEL 2

SHEET NUMBER
L-203

KOLLIN ALTOMARE ARCHITECTS, AND SOLELY BY REGISTERED ARCHITECT LEAH M. MANBECK, HAS PREPARED THIS PLAN. THE ARCHITECT'S RESPONSIBILITY IS LIMITED TO THE DESIGN AND CONSTRUCTION OF THE LANDSCAPE ARCHITECTURE. THE ARCHITECT DOES NOT WARRANT THE ACCURACY OF ANY INFORMATION PROVIDED BY OTHERS. THE ARCHITECT'S LIABILITY IS LIMITED TO THE DESIGN AND CONSTRUCTION OF THE LANDSCAPE ARCHITECTURE. THE ARCHITECT DOES NOT WARRANT THE ACCURACY OF ANY INFORMATION PROVIDED BY OTHERS.



PLANT LEGEND BOTANICAL NAME - SEE L-200 FOR FULL LEGEND

- (ro) Rosmarinus officinalis
'Huntington Carpet'
- (AB) Aloe barbadensis
- (@) Aloe spp.
- (S) Euphorbia lomelii
- (E) Portulacaria afra minima
- (X) Sansevieria trifasciata laurentii
- [no symbol] Decorative rock groundcover

ISSUED FOR:
DESIGN REVIEW BOARD

ISSUANCE	DATE

GBtwo
LANDSCAPE ARCHITECTURE, INC.
4115 N. Central Ex. Suite 400
Chicago, IL 60640



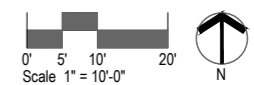
Kollin Altomare Architects
ARCHITECT OF RECORD
Chicago
900 N. Franklin Street, Suite 405-B
Chicago, IL 60610
T: 312.471.8160
kollinaltomare.com

**FAIRMONT SCOTTSDALE PRINCESS
VILLAS & BUNGALOWS AT
SUNSET BEACH**
75 PRINCESS DRIVE, SCOTTSDALE, ARIZONA
PREPARED FOR: STRATEGIC HOTELS & RESORTS

JOB NUMBER
2022-22
DATE
07/12/2024

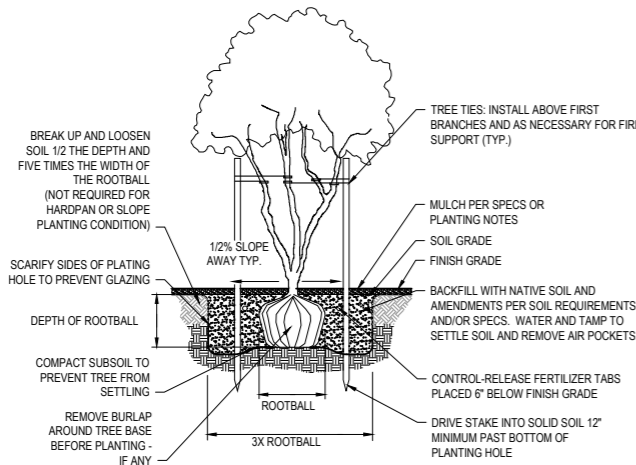
SHEET NAME
PLANTING PLAN -
VILLAS - LEVEL 3

SHEET NUMBER
L-204

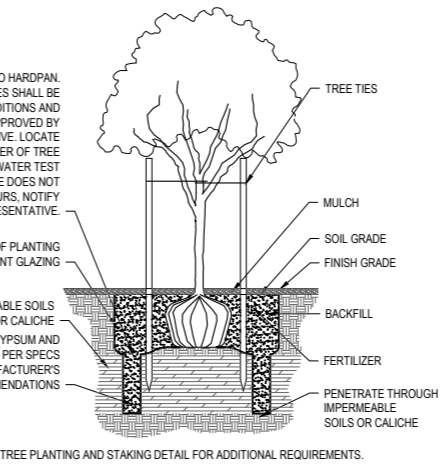
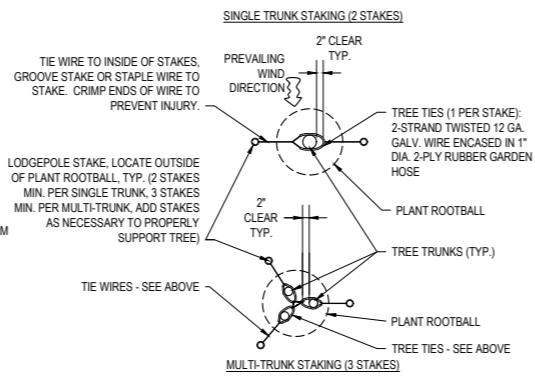


KOLLIN ALTOMARE ARCHITECTS, AND SOLELY RESPONSIBLE FOR THE DESIGN AND CONSTRUCTION OF THE PROJECT, SHALL BE RESPONSIBLE FOR THE ACCURACY OF THE INFORMATION PROVIDED HEREON. THE INFORMATION IS PROVIDED AS IS AND WITHOUT WARRANTY OF ANY KIND, EXPRESS OR IMPLIED, INCLUDING BUT NOT LIMITED TO THE WARRANTIES OF MERCHANTABILITY AND FITNESS FOR A PARTICULAR PURPOSE. THE USER SHALL BE RESPONSIBLE FOR OBTAINING ALL NECESSARY PERMITS AND APPROVALS FROM THE APPROPRIATE AGENCIES AND AUTHORITIES. THE USER SHALL BE RESPONSIBLE FOR OBTAINING ALL NECESSARY PERMITS AND APPROVALS FROM THE APPROPRIATE AGENCIES AND AUTHORITIES. THE USER SHALL BE RESPONSIBLE FOR OBTAINING ALL NECESSARY PERMITS AND APPROVALS FROM THE APPROPRIATE AGENCIES AND AUTHORITIES.

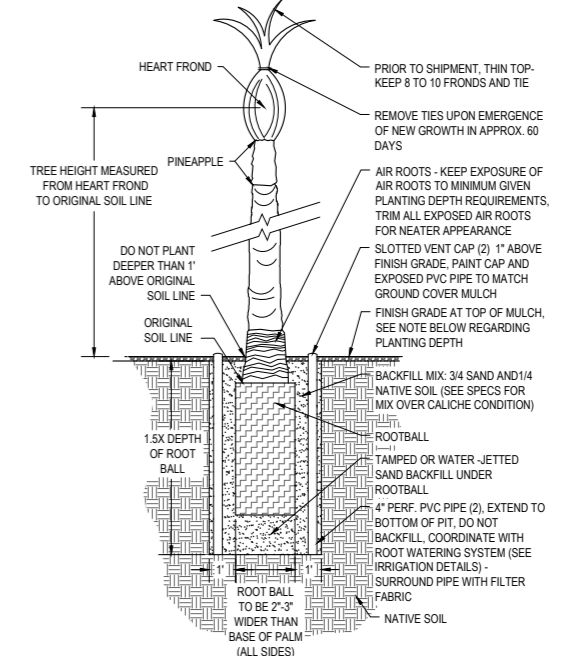
NOTE:
ONE TEST TREE PIT IS TO BE DUG WITHIN THE FIRST 30 DAYS OF THE PROJECT. COORDINATE TEST PIT LOCATION WITH OWNER'S REPRESENTATIVE. WATER TEST PIT TO VERIFY DRAINAGE CONDITIONS. CONTACT OWNER'S REPRESENTATIVE AFTER WATER TESTING TO COORDINATE EXTENT OF HARDPAN CONDITION AND WHERE HARDPAN PLANTING PROCEDURES SHALL BE REQUIRED. SEE HARDPAN TREE PLANTING DETAIL.



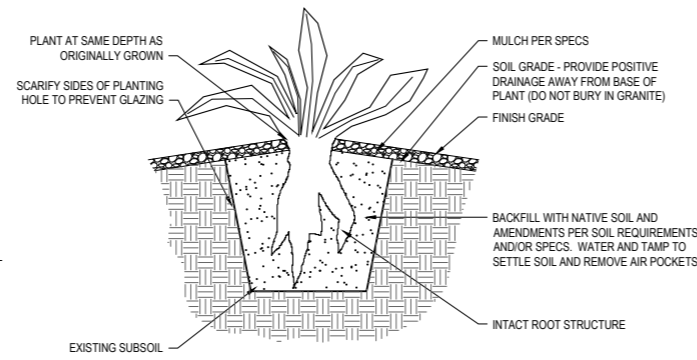
1 TREE PLANTING & STAKING NTS



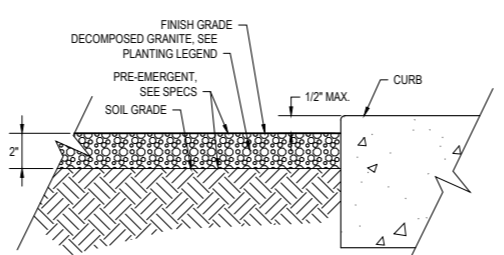
2 TREE PLANTING - HARDPAN NTS



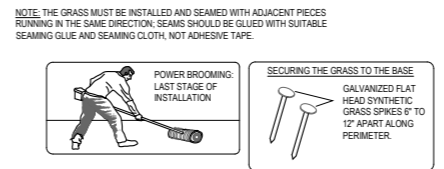
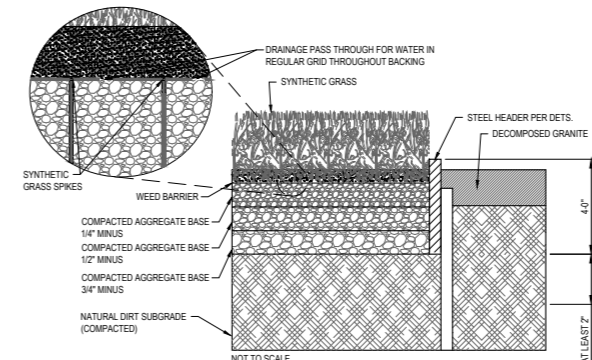
4 SHRUB PLANTING NTS



5 AGAVE PLANTING NTS

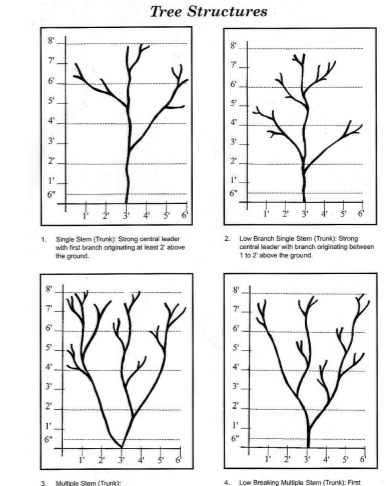


6 DECOMPOSED GRANITE INSTALLATION NTS



NOTES:
1. INSTALLATION TO BE COMPLETED IN ACCORDANCE WITH SPECIFICATIONS BY FACTORY AUTHORIZED INSTALLERS.
2. DO NOT SCALE DRAWINGS.

7 ARTIFICIAL TURF INSTALLATION NTS



8 TREE STRUCTURE NTS

ISSUED FOR:
DESIGN REVIEW BOARD

ISSUANCE	DATE



ARCHITECT OF RECORD
Kollin Altomare Architects
Chicago, IL 60610
T: 312.471.8160
Long Beach, CA 90808
T: 562.597.8760
kollinaltomare.com

PROJECT
FAIRMONT SCOTTSDALE PRINCESS VILLAS & BUNGALOWS AT SUNSET BEACH
75 WEST PRINCESS DRIVE, SCOTTSDALE, ARIZONA
PREPARED FOR: STRATEGIC HOTELS & RESORTS

JOB NUMBER
2022-22
DATE
07/12/2024
SHEET NAME
PLANTING DETAILS

SHEET NUMBER
L-205

KOLLIN ALTOMARE ARCHITECTS, 75 WEST PRINCESS DRIVE, SCOTTSDALE, ARIZONA 85258, TEL: 312.471.8160, WWW.KOLLINALTOMARE.COM

IRRIGATION NOTES

- Irrigation Contractor guarantees 100% coverage in landscape areas.
- Irrigation equipment to be located in landscape areas within property boundaries of the project - lines and equipment are schematic and are sometimes shown in roadways, sidewalks, or outside property lines. This is done for clarity purposes only.
- The drawings are diagrammatic. Therefore, the following should be noted:
 - A. Irrigation components may be shown outside planting areas for graphic clarity only. Avoid conflicts between the irrigation system, utilities, planting materials and architectural features. Install irrigation pipe and wiring in landscaped areas whenever possible.
 - B. Use only standard tees and elbow fittings. Use of cross type fittings is not permitted.
- The irrigation system design is based on a minimum source pressure of 80 psi, a minimum operating pressure of 30 psi and a maximum flow demand of 45 gpm. The contractor shall verify water pressures prior to construction and report any discrepancies between the water pressure indicated on the drawings and the actual pressure reading at the irrigation point of connection to the landscape architect immediately.
- Material used shall be installed as detailed. Irrigation equipment not otherwise detailed or specified shall be installed per manufacturer's recommendations and specifications. Owner's representative and/or landscape architect shall approve any deviation from drawings or materials used.
- The owner's representative may, at any time, take and analyze samples of materials and equipment for conformity to specifications. The contractor shall make such samples available upon request. Rejected material shall be immediately removed from the site and replaced at the contractor's expense.
- Install backflow prevention unit(bpu)(s) piping between the point of connection and the bpu per local codes. The owner's authorized representative shall approve the final location of the bpu. Backflow preventor shall be screened from view.
- Contractor shall be responsible for supplying materials and labor to provide specified electrical service to controller locations. Electrical work to be per manufacturer's specifications and per local code.
- 24 volt wire shall be 600v, UF, UL approved, #14 gauge, single strand, plastic insulated, copper wire. Common wire is to be white, control wire is to be red (use no black wire). Tape and bundle wire every ten (10) feet. During installation wires shall have a 24" loop tied at all direction changes greater than 30 degrees & be untied prior to trench fill in. Lay beside mainline. Splice in valve boxes only, using manufactured epoxy or resin filled wire connectors. Provide 34" slack at each elbow in main line and at each remote control valve. If system is not a two-wire control system, pull one additional spare wire to the most distant valve location for potential future use. Color of extra wire shall be yellow. If Irrigation Specifications differ from this paragraph, follow the Irrigation Specifications.
- Level of pea gravel in irrigation boxes shall be a minimum of 4" below the bottom of the valve so that the valve is completely visible. Pea gravel in valve box to be cleaned from top of valve so that valve is completely visible. Lip of valve box is also to be free of debris. Reference irrigation details.
- Locate pressure regulator and 'y' strainer in a valve box as required. Remote control valve to be located in a separate (adjacent) valve box, or a jumbo valve box may be used in lieu of two separate boxes.
- Drip systems to be flushed through flush caps. Flush caps to be located in 6" round economy boxes and placed at the end of laterals runs.
- The contractor shall provide check valves and air vacuum relief valves as required, or at the discretion of the landscape architect, to each circuit throughout the irrigation system located within sloped areas to prevent low irrigation head drainage.
- Pipe sizes shall conform to the pipe sizing schedule on detail sheet. No substitutions of smaller pipe sizes shall be permitted but substitutions of larger sizes may be approved by the landscape architect.
- Pipe shall be bedded on all sides with four inches of rock free (3/8" minus) material. Import sand if necessary. Backfill in two or more compacted lifts. Settling of trenches by more than an inch shall be brought to finish grade at the contractor's expense.
- Irrigation lines on slopes or within retention basins shall be run parallel with grade and are to maintain the highest elevations possible.
- Multi-outlet emitters shall service all trees and shrubs <5' O.C. and single point-source emitters shall service all shrubs and/or groundcovers >5' O.C.
- Plants that require more than one drip emitter shall have emitters distributed evenly around perimeter of planting well. Emission points at rootballs shall be located on the uphill side, midway between the center of the plant and the edge of the rootball.
- Landscape contractor is responsible for landscape sleeving required to complete the project, whether shown or not. Coordinate installation with the general contractor. Verify any existing sleeves installed by other contractors.
- Irrigation and electrical sleeves to be schedule 40 pvc and all sleeves shall conform to the irrigation schedule. Install one 2" sleeve at all mainline sleeve locations for electrical wire. Sleeves shall be twice the diameter of the pipe being sleeved and extend at least 24" beyond concrete or any other structures. Mark sleeve ends at grade upon installation for verification of location and depth. Allow at least 4" - 6" from end of sleeves to first fitting on irrigation line. Sleeves to be 24" below grade and/or per owner's specifications. Sleeves under parking lots, streets, staging areas, and patios to be installed by paving contractor prior to paving. See Irrigation Specifications for pipe and fitting material type.
- Notify the owner's representative 48 hours prior to the following required stages of observation for:
 - mainline: installation, depth, valves, wire, line pressure test
 - emitter laterals: installation, depth, valves, emitters, outlet tubing, at line pressure

IRRIGATION NOTES - CONTINUED

- controller: installation, functioning
- Prior to owner's approval, an irrigation "tune up" must be performed as follows:
 - A. Irrigation equipment (including pipelines and sleeves) to be documented from two stationary points.
 - B. Drip systems to be flushed beginning with "y" strainer, working away from the pressure regulator.
 - C. Irrigation sprinkler heads to be flushed of debris and flow controls adjusted to achieve maximum coverage for turf areas. Avoid over spray on streets, curbs, sidewalks, walls, and structures.
 - D. Irrigation heads shall be adjusted to proper height.
 - E. Irrigation valves to be labeled on a sheet of paper with stations corresponding to etched labels on top of valve boxes. This sheet to be placed in a plastic pouch and attached to inside of controller.
 - Set back spray and stream type irrigation heads from backs of curbs or sidewalks as per irrigation details to reduce over spray or provide design alternatives to achieve similar results to be approved by landscape architect.
 - Locate valve boxes in planting areas so that they are screened from view. Irrigation boxes shall be tan. No valve boxes to be installed in turf.
 - Mainlines and irrigation equipment shall be placed outside the right-of-way and public utility easements.
 - Prior to placing any irrigation systems in service, an Arizona certified backflow device tester shall test the backflow prevention device and give a copy of the passed test results to the city inspector or mail it to the city department of public works inspection section.
 - After initial testing each backflow devices shall be tested and passed annually in accordance with local utility requirements.
 - Backflow prevention devices shall be placed a minimum of two (2') feet from the water meter / point of connection and be the same size as the meter / point of connection service line.
 - Backflow prevention devices shall have a minimum 24"x36"x4" class B concrete slab with pipe sleeves. If a security cage is installed concrete shall be six (6") inches larger on all sides than the security cage.
 - Pipe crossings in the right-of-way shall be marked on each side of the curb with a non-destructible marking.
 - Install gate valves for full flow.

EMITTER SCHEDULE (BOWSMITH)

TYPE	MODEL	QTY./PLANT	TOTAL GPH
TREES			
15 GAL.	ML-210	2	10
24" BOX	ML-210	2	10
36" BOX	ML-210	2	12
42" BOX	ML-210	2	12
48" BOX	ML-220	2	20
54" BOX	ML-220	2	20
60" BOX	ML-220	2	24
66" BOX	ML-220	3	36
72" BOX	ML-220	3	36
*SHRUBS			
1 GAL.	SL-210	1	1.0
5 GAL.	SL-210	1	1.0
*ORNAMENTAL GRASSES			
1 GAL.	SL-210	1	1.0
5 GAL.	SL-210	1	1.0
CACTI			
OCOTILLO	SL-206	2	1.0
SAGUARO	SL-206	2	1.0

*USE MULTI-PORT EMITTER ON THE SHRUBS & GRASSES WHEN GROUPINGS ALLOW. LIMIT DISTRIBUTION TUBING LENGTH TO 5'. TREES IN TURF TO BE INSTALLED WITH (1) MULTI-PORT EMITTER WITH 3 OPEN PORTS. MONITOR WATER TO CACTI, DO NOT OVER WATER. ADJUST WATER TO OCOTILLO AND CACTI FOR OPTIMUM PLANT GROWTH PERIOD BY CAPPING EMITTER TUBING.

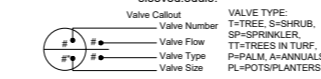
SLEEVE SCHEDULE

IRRIGATION PIPE SIZE	SLEEVE SIZE
1/2"	2"
3/4"	2"
1"	2"
1 1/2"	3"
2"	4"
2 1/2"	6"
3"	6"
4"	10"

- NOTES**
- SLEEVE SIZE EQUALS THE SUM OF ALL PIPE WITHIN THE SLEEVE.
 - WIRE SLEEVES SHALL BE PROVIDED AS NOTED BELOW AND ARE NOT INDICATED ON THE PLANS.
 - ALL SLEEVES UNDER STREETS SHALL BE C 900 PVC FOR 4" & LARGER, USE SCH40 PVC FOR SMALLER SIZES. LOCATE WIRE SLEEVE ALONG ONE SIDE OF PIPE SLEEVE. 1-24 WIRE, (1) 2" SCH. 40 SLEEVE 25-48 WIRE, (1) 3" SCH. 40 SLEEVE
 - ALL SLEEVES SHALL EXTEND AT LEAST 2' BEYOND THE EDGE OF THE HARDSCAPE/PAVEMENT. SLEEVE SIDEWALKS AS REQUIRED.

IRRIGATION SCHEDULE

SYMBOL	MANUFACTURER/MODEL/DESCRIPTION	PSI
	Rain Bird RWS-B-C w/ RWS-SOCK 1400 Series Root Watering System with 4in. diameter x 36in. long with locking grate, semi-rigid mesh tube. Check Valve and Sand Sock. Rain Bird bubbler option as indicated: 1401 0.25 GPM, 1402 0.5 GPM, 1404 1.0 GPM, 1408 2 GPM.	30
	Irritrol 2500DK-1-LF Electric Drip Zone Valve Kit: 1in. 2500 Valve, Filter, Low Flow Regulator & Fittings. Include plastic pvc ball valve same size as valve and jumbo Carson valve box. Color: Tan. No valves in turf.	
	Irritrol 2500DK-1-LF-NP Electric Drip Zone Valve Kit: 1in. 2500 Valve, Filter, Low Flow Regulator & Fittings. Include plastic pvc ball valve same size as valve and jumbo Carson valve box. Color: Purple. No valves in turf.	
	Irritrol 2500DK-1-MF Electric Drip Zone Valve Kit: 1" 2500 Valve, Filter, Medium Flow Regulator & Fittings. Include plastic pvc ball valve same size as valve and jumbo Carson valve box. Color: Tan. No valves in turf.	
	Irritrol 2500DK-1-MF-NP Electric Drip Zone Valve Kit: 1" 2500 Valve, Filter, Medium Flow Regulator & Fittings. Include plastic pvc ball valve same size as valve and jumbo Carson valve box. Color: Purple. No valves in turf.	
	Toro T-FCH-H-FIPT Flush Valve, plumbed to flush manifold at low point.	
	Bowsmith ML200 Series ML206 0.6gph Multi Outlet Emitter, six open outlets, 1/2" FPT inlet, 0.6-2.0 gph flows, Green=0.6gph, Blue=1.0gph, Red=2.0gph.	
	Bowsmith SL200 Series SL206 0.6gph Single Outlet emitter, 0.6gph through 2.0gph flow, 1/2" FPT with barbed elbow outlet. Green=0.6gph, Blue=1.0gph, Red=2.0gph, Yellow=3.0gph.	
	Irritrol 214B AND OMR-30 Electric Remote Control Valve, globe/angle configuration, with Omni-Reg 5-30 psi regulator. Include plastic pvc ball valve same size as valve and large Carson valve box. Color: Purple. No valves in turf.	
	Griswold Isolator B Brass DWS Valve with Union Ball Valve. Includes Plug In Boss. Sizes 1/2in. through 2in., install same size as irrigation line. 100 mesh stainless steel strainer and packing gland ball valve are ideal for dirty water applications.	
	Nibco P-619-RW 2" to 12" cast iron gate valve, same size as mainline pipe where located. Resilient wedge non-rising stem flow control with IPS push-on ends.	
	Air Relief Valve 1" Crispin AL Series Air and Vacuum Valve. Model #: CR-AL-10	
	Febco 825Y 1" Reduced Pressure Backflow Preventer	
	Hydro Point WTPRO3-C-48-SWM-Existing 18-gauge, stainless steel, wall mount enclosure w/ key-lock entry.	
	Irritrol TC-06-EX-R Hybrid Controller, 6- Station, Outdoor Model, with Plastic Locking Cabinet. Climate Logic compatible, and Remote-Ready.	
	Point of Connection 1"	
	Point of Connection 1"	
	Point of Connection 1"	
	Point of Connection 2"	
	Irrigation Lateral Line: PVC Class 200 SDR 21-NP Tree Lateral. 3/4" unless otherwise noted. (Purple Pipe)	
	Irrigation Lateral Line: PVC Class 200 SDR 21-NP Shrub Lateral. 3/4" unless otherwise noted. (Purple Pipe)	
	Irrigation Lateral Line: PVC Class 200 SDR 21-NP Palm Lateral. 3/4" unless otherwise noted. (Purple Pipe)	
	Irrigation Lateral Line: PVC Class 200 SDR 21-NP Pot Lateral. 3/4" unless otherwise noted. (Purple Pipe)	
	Irrigation Lateral Line: PVC Class 200 SDR 21-NP Pot Lateral. 3/4" unless otherwise noted. (Purple Pipe)	
	Irrigation Mainline: PVC Schedule 40-NP 1" - 3" Diameter. Purple Pipe	
	Irrigation Mainline: PVC Schedule 40 1" - 3" Diameter.	
	Pipe Sleeve: See Details for Pipe Sizing & Sleeve Schedule. Twice the nominal diameter of the pipe being sleeved.	



ISSUED FOR:
DESIGN REVIEW BOARD

ISSUANCE	DATE



GBtwo
LANDSCAPE ARCHITECTURE, INC.
11516 Calumet St. Suite 101 B200
Chicago, IL 60642



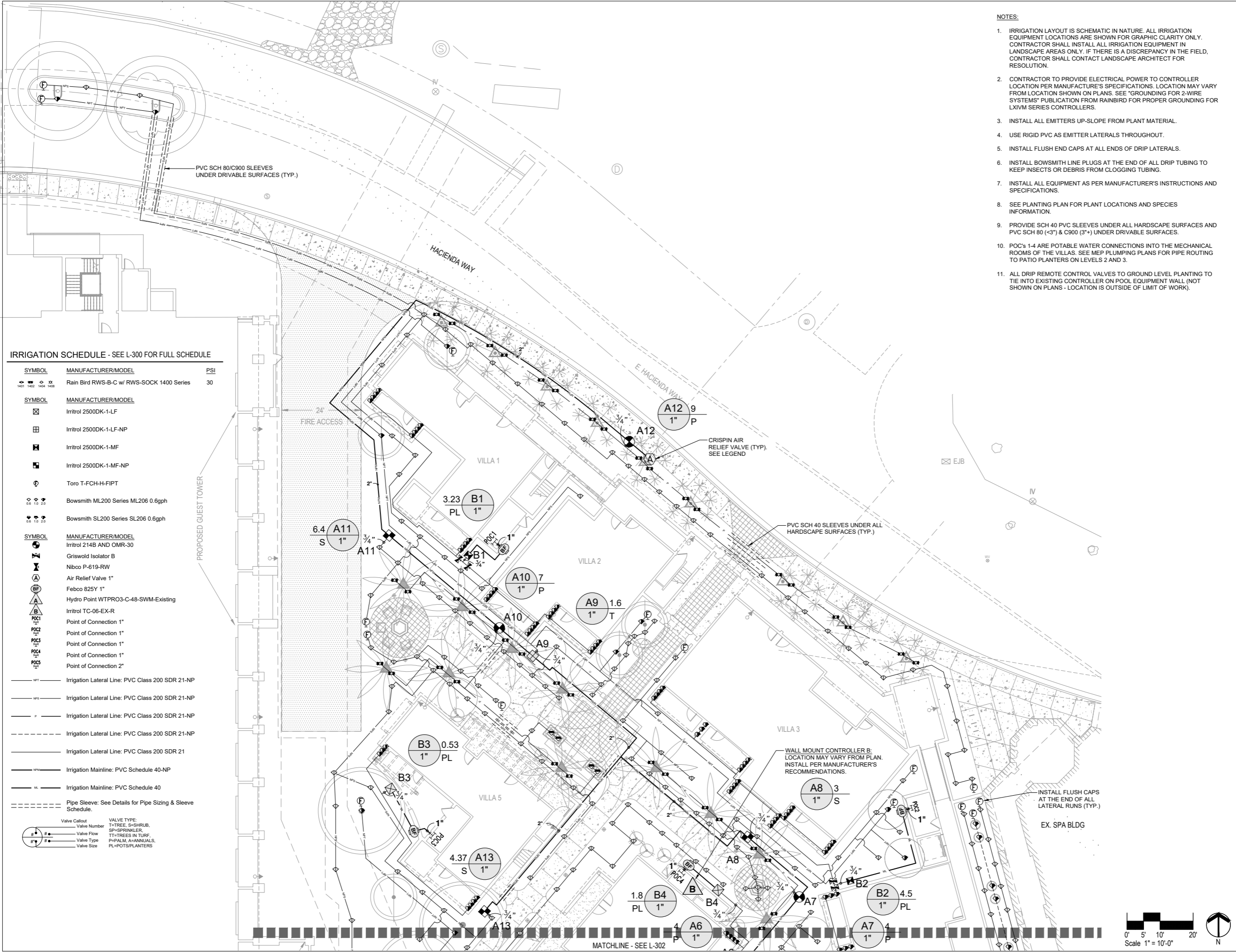
Kollin Altomare Architects
ARCHITECT OF RECORD
900 N. Franklin Street, Suite 405-B
Chicago, IL 60610
T: 312.471.8160
KollinAltomare.com
4265 E. Conant Street, Suite 101
Long Beach, CA 90808
T: 562.597.0760
KollinAltomare.com

FAIRMONT SCOTTSDALE PRINCESS VILLAS & BUNGALOWS AT SUNSET BEACH
PREPARED FOR: STRATEGIC HOTELS & RESORTS

JOB NUMBER
2022-22
DATE
07/12/2024
SHEET NAME
IRRIGATION NOTES AND LEGEND

SHEET NUMBER
L-300

KOLLIN ALTOMARE ARCHITECTS, AND COMPETITELY REGISTERED ALL INFORMATION DEVELOPED BY THIS FIRM IS THE PROPERTY OF KOLLIN ALTOMARE ARCHITECTS AND IS NOT TO BE REPRODUCED, COPIED, OR TRANSMITTED IN ANY FORM OR BY ANY MEANS, ELECTRONIC OR MECHANICAL, INCLUDING PHOTOCOPYING, RECORDING, OR BY ANY INFORMATION STORAGE AND RETRIEVAL SYSTEM, WITHOUT THE WRITTEN PERMISSION AND SIGNATURE OF KOLLIN ALTOMARE ARCHITECTS, INC.



IRRIGATION SCHEDULE - SEE L-300 FOR FULL SCHEDULE

SYMBOL	MANUFACTURER/MODEL	PSI
	Rain Bird RWS-B-C w/ RWS-SOCK 1400 Series	30
	Irritrol 2500DK-1-LF	
	Irritrol 2500DK-1-LF-NP	
	Irritrol 2500DK-1-MF	
	Irritrol 2500DK-1-MF-NP	
	Toro T-FCH-H-FIPT	
	Bowsmith ML200 Series ML206 0.6gph	
	Bowsmith SL200 Series SL206 0.6gph	
SYMBOL	MANUFACTURER/MODEL	
	Irritrol 214B AND OMR-30	
	Griswold Isolator B	
	Nibco P-619-RW	
	Air Relief Valve 1"	
	Febco 825Y 1"	
	Hydro Point WTPRO3-C-48-SWM-Existing	
	Irritrol TC-06-EX-R	
	Point of Connection 1"	
	Point of Connection 1"	
	Point of Connection 1"	
	Point of Connection 1"	
	Point of Connection 2"	
	Irrigation Lateral Line: PVC Class 200 SDR 21-NP	
	Irrigation Lateral Line: PVC Class 200 SDR 21-NP	
	Irrigation Lateral Line: PVC Class 200 SDR 21-NP	
	Irrigation Lateral Line: PVC Class 200 SDR 21-NP	
	Irrigation Lateral Line: PVC Class 200 SDR 21	
	Irrigation Mainline: PVC Schedule 40-NP	
	Irrigation Mainline: PVC Schedule 40	
	Pipe Sleeve: See Details for Pipe Sizing & Sleeve Schedule.	

Valve Callout	Valve Type:
	T=TREE, S=SHRUB, SP=SPRINKLER
	TT=TREES IN TURF
	P=PALM, A=ANNUALS, PL=POTS/PLANTERS

- NOTES:**
- IRRIGATION LAYOUT IS SCHEMATIC IN NATURE. ALL IRRIGATION EQUIPMENT LOCATIONS ARE SHOWN FOR GRAPHIC CLARITY ONLY. CONTRACTOR SHALL INSTALL ALL IRRIGATION EQUIPMENT IN LANDSCAPE AREAS ONLY. IF THERE IS A DISCREPANCY IN THE FIELD, CONTRACTOR SHALL CONTACT LANDSCAPE ARCHITECT FOR RESOLUTION.
 - CONTRACTOR TO PROVIDE ELECTRICAL POWER TO CONTROLLER LOCATION PER MANUFACTURER'S SPECIFICATIONS. LOCATION MAY VARY FROM LOCATION SHOWN ON PLANS. SEE "GROUNDING FOR 2-WIRE SYSTEMS" PUBLICATION FROM RAINBIRD FOR PROPER GROUNDING FOR LXVM SERIES CONTROLLERS.
 - INSTALL ALL EMITTERS UP-SLOPE FROM PLANT MATERIAL.
 - USE RIGID PVC AS EMITTER LATERALS THROUGHOUT.
 - INSTALL FLUSH END CAPS AT ALL ENDS OF DRIP LATERALS.
 - INSTALL BOWSMITH LINE PLUGS AT THE END OF ALL DRIP TUBING TO KEEP INSECTS OR DEBRIS FROM CLOGGING TUBING.
 - INSTALL ALL EQUIPMENT AS PER MANUFACTURER'S INSTRUCTIONS AND SPECIFICATIONS.
 - SEE PLANTING PLAN FOR PLANT LOCATIONS AND SPECIES INFORMATION.
 - PROVIDE SCH 40 PVC SLEEVES UNDER ALL HARDSCAPE SURFACES AND PVC SCH 80 (<3") & C900 (3"+) UNDER DRIVABLE SURFACES.
 - POC'S 1-4 ARE POTABLE WATER CONNECTIONS INTO THE MECHANICAL ROOMS OF THE VILLAS. SEE MEP PLUMBING PLANS FOR PIPE ROUTING TO PATIO PLANTERS ON LEVELS 2 AND 3.
 - ALL DRIP REMOTE CONTROL VALVES TO GROUND LEVEL PLANTING TO TIE INTO EXISTING CONTROLLER ON POOL EQUIPMENT WALL (NOT SHOWN ON PLANS - LOCATION IS OUTSIDE OF LIMIT OF WORK).

ISSUED FOR:
DESIGN REVIEW BOARD

ISSUANCE	DATE

COLEMAN DESIGN GROUP
Landscape Architecture
Irrigation Consulting and Design

GBtwo
LANDSCAPE ARCHITECTURE, INC.
6115 N. Central Rd. Suite 402 Bldg. 200

ARCHITECT OF RECORD:
Kollin Altomare Architects
Chicago
900 N. Franklin Street, Suite 405-B
Chicago, IL 60610
T: 312.471.7870
KollinAltomare.com

PROJECT:
FAIRMONT SCOTTSDALE PRINCESS VILLAS & BUNGALOWS AT SUNSET BEACH
7500 SUNSET PRINCESS DRIVE, SCOTTSDALE, ARIZONA
PREPARED FOR: STRATEGIC HOTELS & RESORTS

JOB NUMBER:
2022-22

DATE:
07/12/2024

SHEET NAME:
IRRIGATION PLAN - NORTH

SHEET NUMBER:
L-301

Scale 1" = 10'-0"

ISSUANCE	DATE



ARCHITECT OF RECORD
Kollin Altomare Architects
Chicago
900 N. Franklin Street, Suite 405-B
Chicago, IL 60610
T: 312.471.7870
kollinaltomare.com

PROJECT
FAIRMONT SCOTTSDALE PRINCESS VILLAS & BUNGALOWS AT SUNSET BEACH
75 WEST PRINCESS DRIVE, SCOTTSDALE, ARIZONA
PREPARED FOR: STRATEGIC HOTELS & RESORTS

JOB NUMBER
2022-22
DATE
07/12/2024
SHEET NAME
IRRIGATION PLAN - SOUTH
SHEET NUMBER

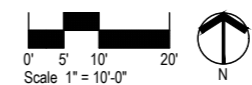
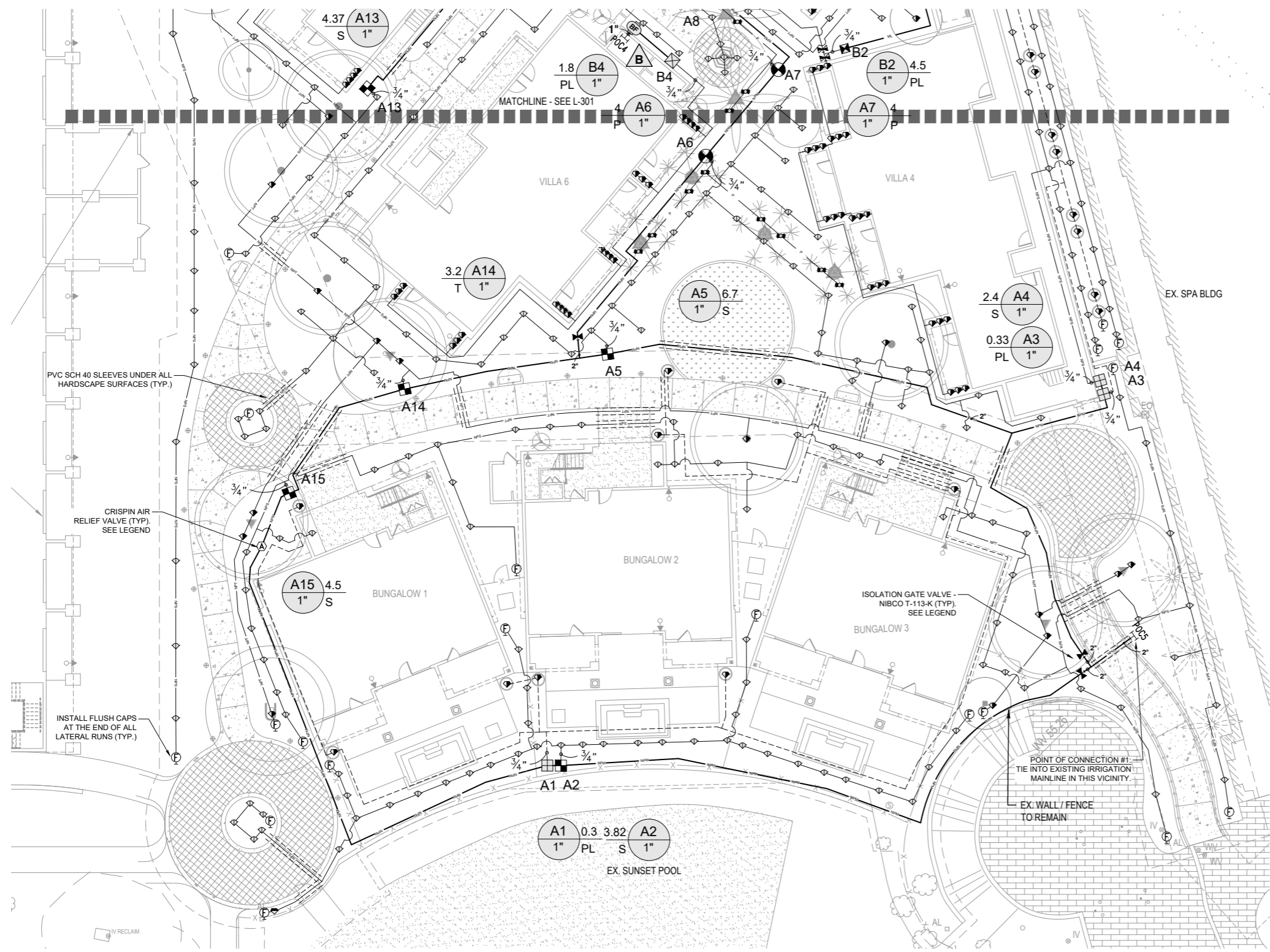
L-302

IRRIGATION SCHEDULE - SEE L-300 FOR FULL SCHEDULE

SYMBOL	MANUFACTURER/MODEL	PSI
	Rain Bird RWS-B-C w/ RWS-SOCK 1400 Series	30
SYMBOL	MANUFACTURER/MODEL	
	Irritrol 2500DK-1-LF	
	Irritrol 2500DK-1-LF-NP	
	Irritrol 2500DK-1-MF	
	Irritrol 2500DK-1-MF-NP	
	Toro T-FCH-H-FIPT	
	Bowsmith ML200 Series ML206 0.6gph	
	Bowsmith SL200 Series SL206 0.6gph	
SYMBOL	MANUFACTURER/MODEL	
	Irritrol 214B AND OMR-30	
	Griswold Isolator B	
	Nibco P-619-RW	
	Air Relief Valve 1"	
	Febco 825Y 1"	
	Hydro Point WTPRO3-C-48-SWM-Existing	
	Irritrol TC-06-EX-R	
	Point of Connection 1"	
	Point of Connection 1"	
	Point of Connection 1"	
	Point of Connection 2"	
	Irrigation Lateral Line: PVC Class 200 SDR 21-NP	
	Irrigation Lateral Line: PVC Class 200 SDR 21-NP	
	Irrigation Lateral Line: PVC Class 200 SDR 21-NP	
	Irrigation Lateral Line: PVC Class 200 SDR 21-NP	
	Irrigation Lateral Line: PVC Class 200 SDR 21-NP	
	Irrigation Lateral Line: PVC Class 200 SDR 21-NP	
	Irrigation Mainline: PVC Schedule 40-NP	
	Irrigation Mainline: PVC Schedule 40	
	Pipe Sleeve: See Details for Pipe Sizing & Sleeve Schedule.	

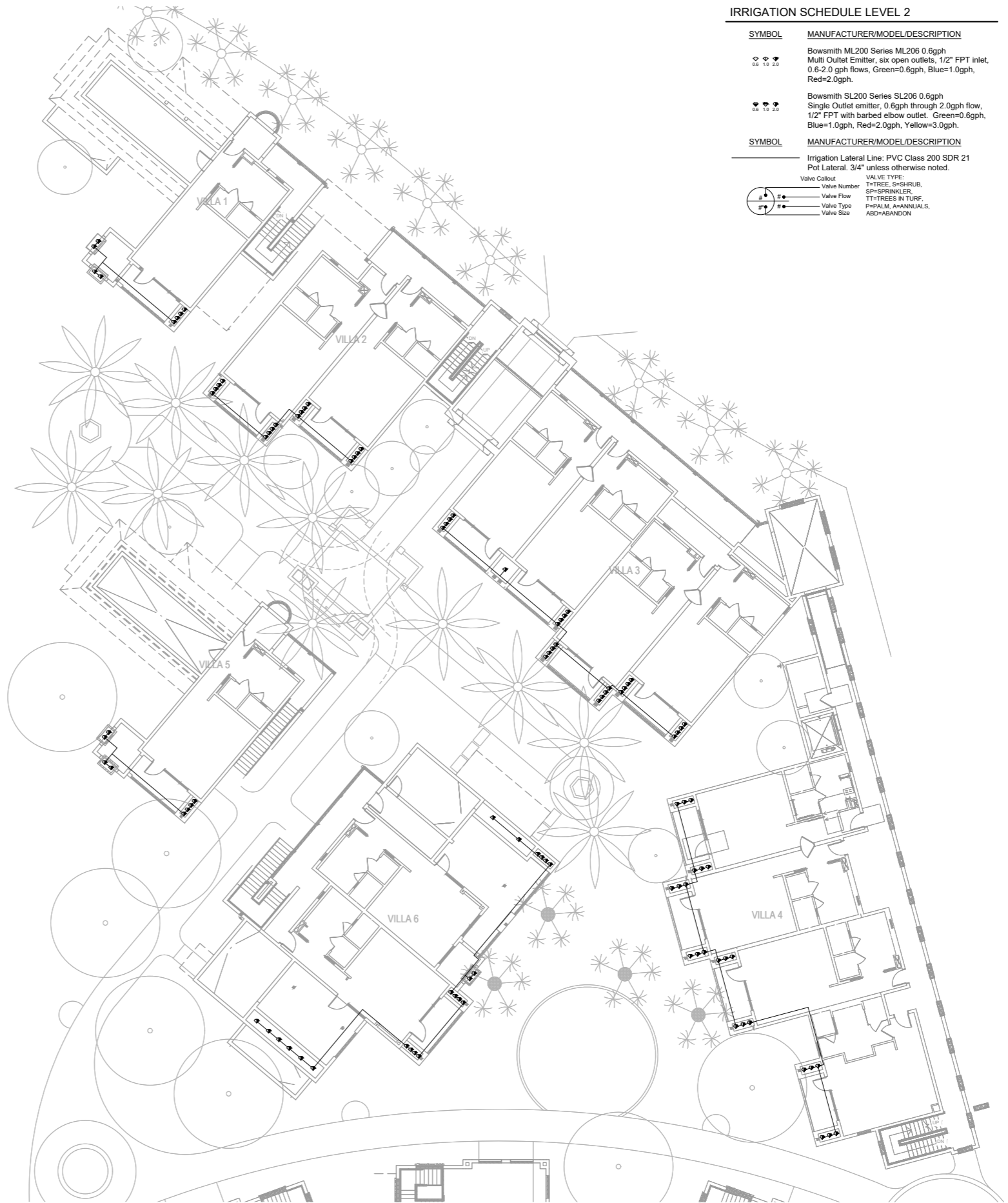
Valve Callout	Valve Number	Valve Type	Valve Size	VALVE TYPE:
	T	TREE	1"	T=TREE, S=SHRUB, SP=SPRINKLER, TT=TREES IN TURF, P=PALM, A=ANNUALS, PL=POTS/PLANTERS

- NOTES:**
- IRRIGATION LAYOUT IS SCHEMATIC IN NATURE. ALL IRRIGATION EQUIPMENT LOCATIONS ARE SHOWN FOR GRAPHIC CLARITY ONLY. CONTRACTOR SHALL INSTALL ALL IRRIGATION EQUIPMENT IN LANDSCAPE AREAS ONLY. IF THERE IS A DISCREPANCY IN THE FIELD, CONTRACTOR SHALL CONTACT LANDSCAPE ARCHITECT FOR RESOLUTION.
 - CONTRACTOR TO PROVIDE ELECTRICAL POWER TO CONTROLLER LOCATION PER MANUFACTURER'S SPECIFICATIONS. LOCATION MAY VARY FROM LOCATION SHOWN ON PLANS. SEE "GROUNDING FOR 2-WIRE SYSTEMS" PUBLICATION FROM RAINBIRD FOR PROPER GROUNDING FOR LXIVM SERIES CONTROLLERS.
 - INSTALL ALL EMITTERS UP-SLOPE FROM PLANT MATERIAL.
 - USE RIGID PVC AS EMITTER LATERALS THROUGHOUT.
 - INSTALL FLUSH END CAPS AT ALL ENDS OF DRIP LATERALS.
 - INSTALL BOWSMITH LINE PLUGS AT THE END OF ALL DRIP TUBING TO KEEP INSECTS OR DEBRIS FROM CLOGGING TUBING.
 - INSTALL ALL EQUIPMENT AS PER MANUFACTURER'S INSTRUCTIONS AND SPECIFICATIONS.
 - SEE PLANTING PLAN FOR PLANT LOCATIONS AND SPECIES INFORMATION.
 - PROVIDE SCH 40 PVC SLEEVES UNDER ALL HARDSCAPE SURFACES AND PVC SCH 80 (<3") & C900 (3"+) UNDER DRIVABLE SURFACES.
 - POC'S 1-4 ARE POTABLE WATER CONNECTIONS INTO THE MECHANICAL ROOMS OF THE VILLAS. SEE MEP PLUMBING PLANS FOR PIPE ROUTING TO PATIO PLANTERS ON LEVELS 2 AND 3.
 - ALL DRIP REMOTE CONTROL VALVES TO GROUND LEVEL PLANTING TO TIE INTO EXISTING CONTROLLER ON POOL EQUIPMENT WALL (NOT SHOWN ON PLANS - LOCATION IS OUTSIDE OF LIMIT OF WORK).



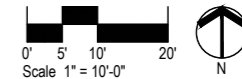
NOTES:

1. IRRIGATION LAYOUT IS SCHEMATIC IN NATURE. ALL IRRIGATION EQUIPMENT LOCATIONS ARE SHOWN FOR GRAPHIC CLARITY ONLY. CONTRACTOR SHALL INSTALL ALL IRRIGATION EQUIPMENT IN LANDSCAPE AREAS ONLY. IF THERE IS A DISCREPANCY IN THE FIELD, CONTRACTOR SHALL CONTACT LANDSCAPE ARCHITECT FOR RESOLUTION.
2. CONTRACTOR TO PROVIDE ELECTRICAL POWER TO CONTROLLER LOCATION PER MANUFACTURER'S SPECIFICATIONS. LOCATION MAY VARY FROM LOCATION SHOWN ON PLANS. SEE "GROUNDING FOR 2-WIRE SYSTEMS" PUBLICATION FROM RAINBIRD FOR PROPER GROUNDING FOR LXVM SERIES CONTROLLERS.
3. INSTALL ALL EMITTERS UP-SLOPE FROM PLANT MATERIAL.
4. USE RIGID PVC AS EMITTER LATERALS THROUGHOUT.
5. INSTALL FLUSH END CAPS AT ALL ENDS OF DRIP LATERALS.
6. INSTALL BOWSMITH LINE PLUGS AT THE END OF ALL DRIP TUBING TO KEEP INSECTS OR DEBRIS FROM CLOGGING TUBING.
7. INSTALL ALL EQUIPMENT AS PER MANUFACTURER'S INSTRUCTIONS AND SPECIFICATIONS.
8. SEE PLANTING PLAN FOR PLANT LOCATIONS AND SPECIES INFORMATION.
9. PROVIDE SCH 40 PVC SLEEVES UNDER ALL HARDSCAPE SURFACES AND PVC SCH 80 (<3") & C900 (3"+) UNDER DRIVABLE SURFACES.
10. POC'S 1-4 ARE POTABLE WATER CONNECTIONS INTO THE MECHANICAL ROOMS OF THE VILLAS. SEE MEP PLUMBING PLANS FOR PIPE ROUTING TO PATIO PLANTERS ON LEVELS 2 AND 3.
11. ALL DRIP REMOTE CONTROL VALVES TO GROUND LEVEL PLANTING TO TIE INTO EXISTING CONTROLLER ON POOL EQUIPMENT WALL (NOT SHOWN ON PLANS - LOCATION IS OUTSIDE OF LIMIT OF WORK).



IRRIGATION SCHEDULE LEVEL 2

SYMBOL	MANUFACTURER/MODEL/DESCRIPTION
	Bowsmith ML200 Series ML206 0.6gph Multi Outlet Emitter, six open outlets, 1/2" FPT inlet, 0.6-2.0 gph flows, Green=0.6gph, Blue=1.0gph, Red=2.0gph.
	Bowsmith SL200 Series SL206 0.6gph Single Outlet emitter, 0.6gph through 2.0gph flow, 1/2" FPT with barbed elbow outlet. Green=0.6gph, Blue=1.0gph, Red=2.0gph, Yellow=3.0gph.
SYMBOL	MANUFACTURER/MODEL/DESCRIPTION
	Irrigation Lateral Line: PVC Class 200 SDR 21 Pot Lateral. 3/4" unless otherwise noted.
	Valve Callout
	Valve Number
	Valve Flow
	Valve Type
	Valve Size
	VALVE TYPE: T=TREE, S=SHRUB, SP=SPRINKLER, TT=TREES IN TURF, P=PALM, A=ANNUALS, ABD=ABANDON



ISSUED FOR:
DESIGN REVIEW BOARD

ISSUANCE	DATE

COLEMAN
DESIGN GROUP
Landscape architecture
Irrigation Consulting and Design

GBtwo
LANDSCAPE ARCHITECTURE, INC.
4115 N. Central Ex. Suite 402 Bldg.



ARCHITECT OF RECORD
Kollin Altomare Architects
Chicago
900 N. Franklin Street, Suite 405-B
Chicago, IL 60610
T: 312.471.7870
kollinaltomare.com

PROJECT
FAIRMONT SCOTTSDALE PRINCESS
VILLAS & BUNGALOWS AT
SUNSET BEACH
75 WEST PRINCESS DRIVE, SCOTTSDALE, ARIZONA
PREPARED FOR: STRATEGIC HOTELS & RESORTS

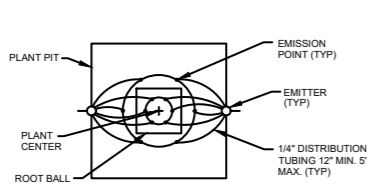
JOB NUMBER
2022-22

DATE
07/12/2024

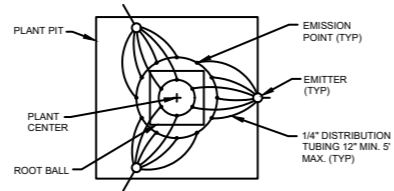
SHEET NAME
IRRIGATION PLAN -
VILLAS - LEVEL 2

SHEET NUMBER
L-303

KOLLIN ALTOMARE ARCHITECTS, AND SOMEWHAT ENGINEERS A.L.L. HOLDING COMPANY, INC. ARE NOT BE RESPONSIBLE FOR ANY ERRORS OR OMISSIONS IN THIS PLAN. THE USER SHALL BE RESPONSIBLE FOR VERIFYING THE ACCURACY OF ALL INFORMATION AND DATA PROVIDED TO THEM BY ANY OTHER PARTY. THE USER SHALL BE RESPONSIBLE FOR VERIFYING THE ACCURACY OF ALL INFORMATION AND DATA PROVIDED TO THEM BY ANY OTHER PARTY.

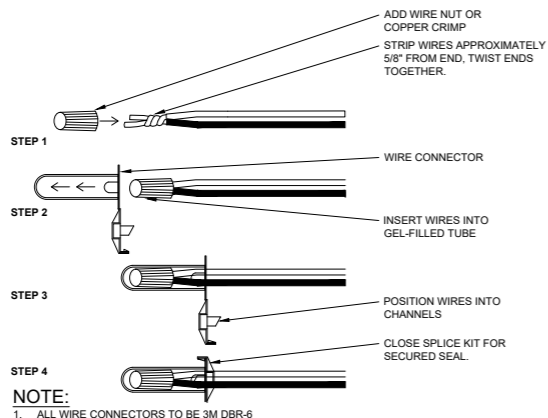


TREE EMITTER - MULTI OUTLET
15 GAL TO 60" BOX TREES
(SEE EMITTER SCHEDULE)



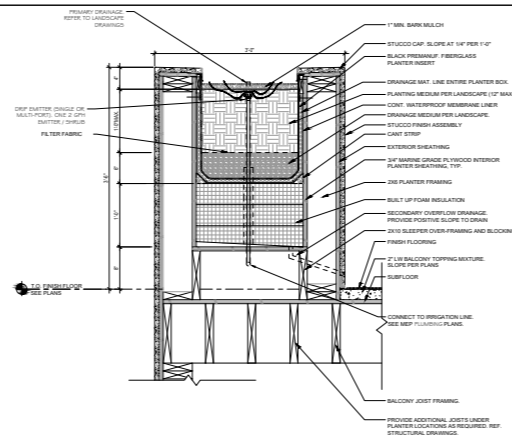
TREE EMITTER - MULTI OUTLET
66" BOX TO 84" BOX TREES
(SEE EMITTER SCHEDULE)

Q SCALE: NTS
SN: - **TREE EMITTER LAYOUT**



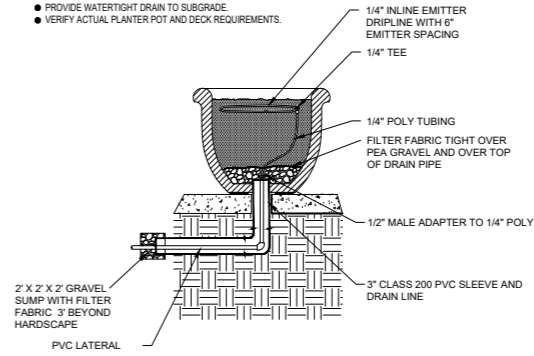
S SCALE: NTS
SN: - **WIRE SPLICE**

NOTE:
1. ALL WIRE CONNECTORS TO BE 3M DBR-6



S SCALE: NTS
SN: - **TYPICAL PLANTER IRRIGATION**

- PLANTER POT METHODOLOGY**
- PROVIDE SUBGRADE IRRIGATION SUPPLY AND DRAIN.
 - PROVIDE WATERTIGHT DRAIN TO SUBGRADE.
 - VERIFY ACTUAL PLANTER POT AND DECK REQUIREMENTS.



R SCALE: NTS
SN: - **IRRIGATED POT**

GENERAL IRRIGATION NOTES:

- IRRIGATION CONTRACTOR TO REVIEW ACTUAL SITE CONDITIONS PRIOR TO INSTALLING IRRIGATION OR ORDERING MATERIALS. SOME ADJUSTMENTS IN EQUIPMENT LOCATIONS MAY BE REQUIRED TO MATCH ACTUAL CURRENT CONDITIONS. REVIEW ANY CHANGES WITH OWNERS REPRESENTATIVE.
- THE IRRIGATION SYSTEM HAS BEEN DESIGNED FOR A STATIC WATER PRESSURE OF 80 PSI, SUPPLIED BY THE PUMP. CONTRACTOR TO CHECK WATER PRESSURE PRIOR TO STARTING CONSTRUCTION AND NOTIFY OWNER'S REPRESENTATIVE IF NOT MIN. 80 PSI.
- ALL MAINLINE FITTINGS <3" SHALL BE SCHEDULE 80.
- ALL MAINLINE FITTINGS 3" OR > SHALL BE IRON GASKETED WITH JOINT RESTRAINT HARNESSES.
- REFER TO EMITTER SCHEDULE FOR TREE, SHRUB GPH, & NUMBER OF EMITTERS. USE MULT-PORT EMITTERS ON SHRUBS WHEN SPACING ALLOWS.
- EQUIPMENT SUBMITTAL FOR APPROVAL PRIOR TO ORDERING MATERIALS.
- SOME IRRIGATION PIPING AND EQUIPMENT ARE SHOWN SCHEMATIC AND ARE TO BE LOCATED IN THE LANDSCAPE AREA.
- TREES IN TURF HAVE (1) MULTI-PORT EMITTER W/ SIX OUTLETS.
- LOCATE SPRAY HEADS 6" FROM HEADER AND WALKS. ADJUST NOZZLE TO PREVENT OVERSPRAY ON SIDEWALKS.
- EMBOSS VALVE BOX LIDS WITH CONTROLLER LETTER AND VALVE NUMBER AND INSTALL PURPLE CHRISTY VALVE TAG PER DETAIL.
- SLEEVE ALL SIDEWALKS TYPICAL PER SLEEVE SCHEDULE. USE EXISTING SLEEVES WHERE POSSIBLE.
- USE MULT-PORT EMITTERS ON SHRUBS WHEN SPACING ALLOWS. REFER TO DETAIL.
- ALL IRRIGATION LINES AND EQUIPMENT ARE DIAGRAMMATIC AND ARE SOMETIMES SHOWN IN ROADWAYS AND HARDSCAPE FOR GRAPHIC CLARITY. LOCATE PIPING AND EQUIPMENT IN LANDSCAPE PLANTING AREAS.

ISSUED FOR:
DESIGN REVIEW BOARD

ISSUANCE	DATE



Kollin Altomare Architects
ARCHITECT OF RECORD
Chicago, IL 60610
t: 312.471.1970
kollinaltomare.com

FAIRMONT SCOTTSDALE PRINCESS VILLAS & BUNGALOWS AT SUNSET BEACH
7075 EAST PRINCESS DRIVE, SCOTTSDALE, AZ 85255
PREPARED FOR: STRATEGIC HOTELS & RESORTS

PROJECT: FAIRMONT SCOTTSDALE PRINCESS VILLAS & BUNGALOWS AT SUNSET BEACH
JOB NUMBER: 2022-22
DATE: 07/12/2024
SHEET NAME: IRRIGATION DETAILS

SHEET NUMBER: **L-307**

KOLLIN ALTOMARE ARCHITECTS, INC. CONSENTS TO THE REPRODUCTION AND DISTRIBUTION OF THIS DOCUMENT ONLY FOR THE PROJECT AND SITE SPECIFICALLY IDENTIFIED HEREIN. ANY OTHER REPRODUCTION OR DISTRIBUTION OF THIS DOCUMENT IS STRICTLY PROHIBITED. © 2024 KOLLIN ALTOMARE ARCHITECTS, INC.