

**Simulations**  
**Photos**  
**All Graphics (no plans)**

Search: [Voice Coverage Map](#) or [Data Coverage Map](#)

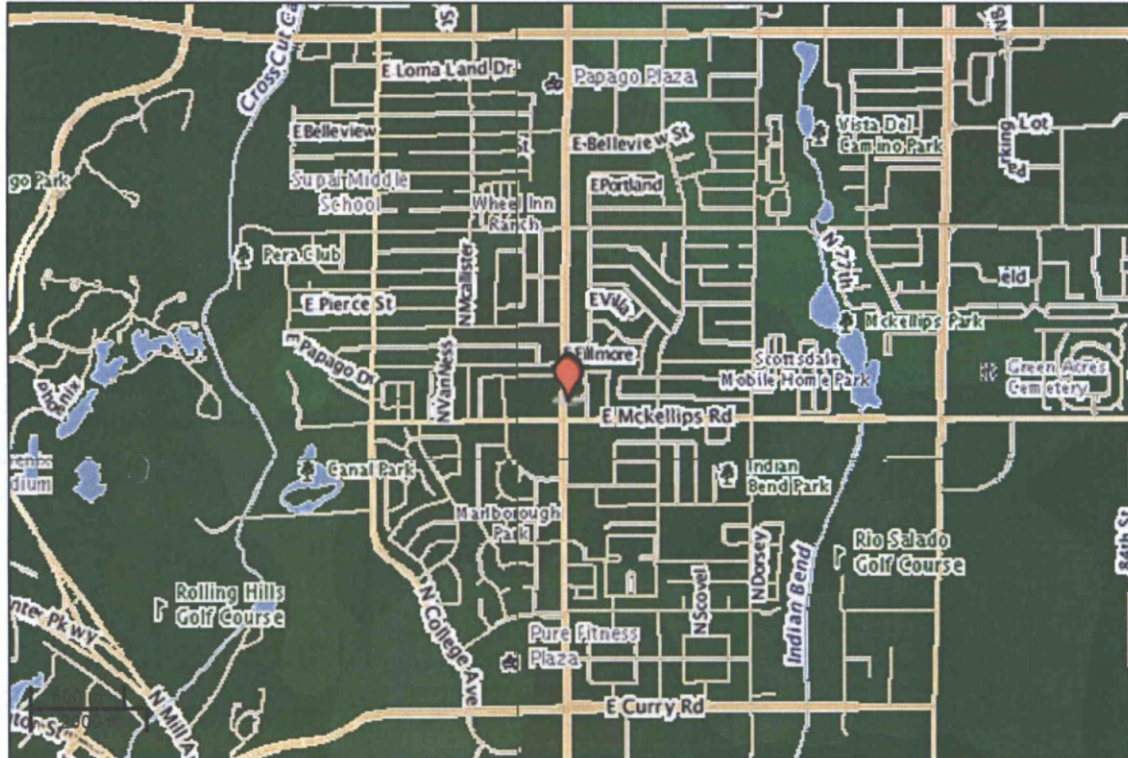
Street:  City:  State:  Zip:

[Prepaid and FlexPay coverage map >](#)  
[Learn more about T-Mobile's expanded coverage >](#)

**Signal Strength**

Excellent	Very Good	Good	Moderate	Partner	None

Based on outdoor coverage - indoor and in-car coverage can vary.  
[Click here for detailed descriptions](#)



Please zoom in to see street level coverage details for the areas where you live, work, and play.

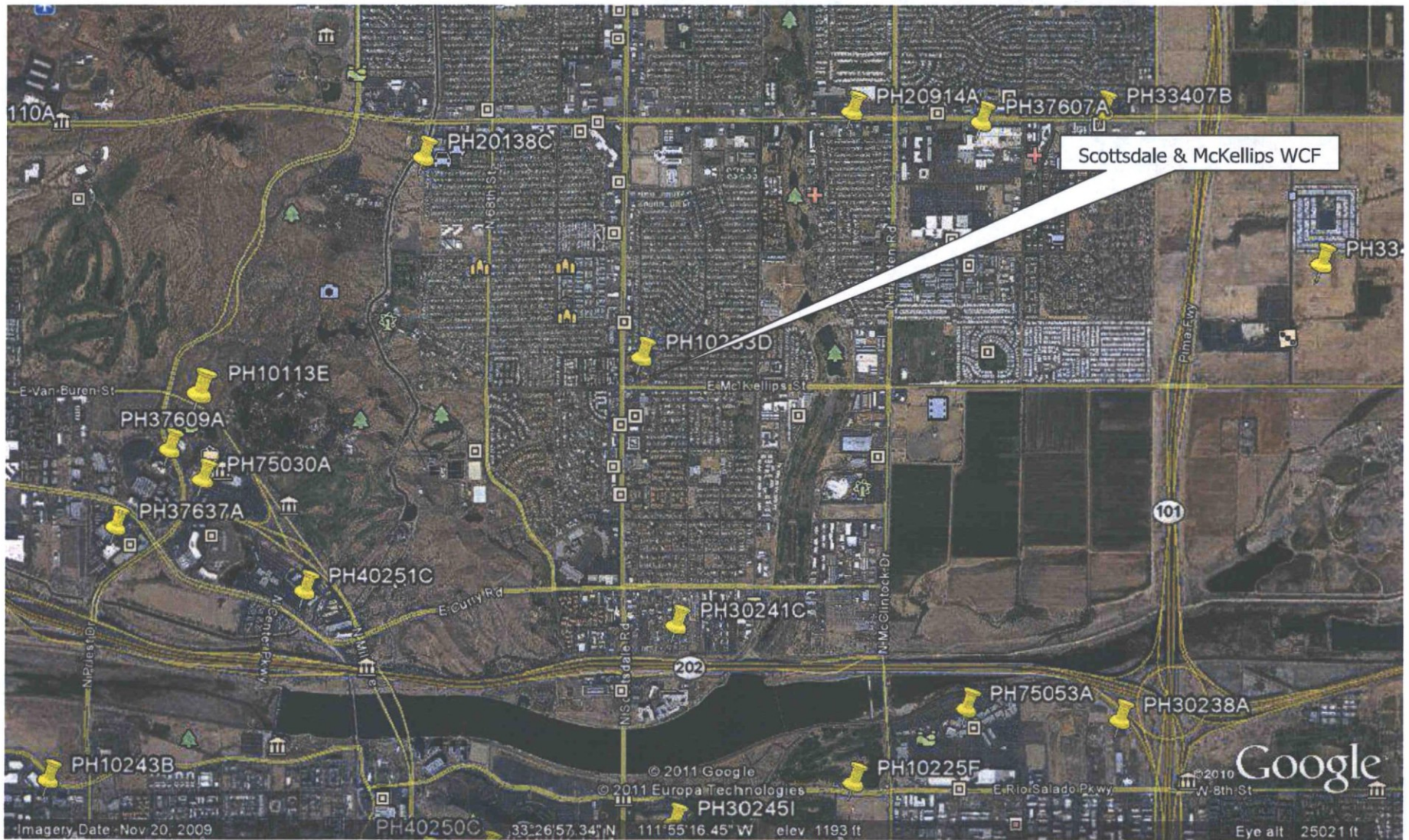
Address Location  New Cell Site  T-Mobile HotSpot  [Find a T-Mobile HotSpot >](#)

**MAP INFORMATION:** Maps approximate anticipated coverage outdoors, which varies by location, may include limited or no coverage areas, and do not guarantee service availability. Within coverage areas, network changes, traffic volume, outages, technical limitations, signal strength, your equipment, obstructions, weather and other conditions may interfere with service quality and availability. Portions of the maps include networks operated by our roaming partners; we are not responsible for their performance. 3G and 4G Coverage requires a capable device. Devices not purchased from T-Mobile or an authorized dealer may not work on our network. T-Mobile to T-Mobile calls are directly dialed between T-Mobile devices while on the T-Mobile USA network (and not roaming in the US or internationally); voicemail and other T-Mobile service numbers not included. Roaming: Nationwide roaming refers to usage while on a roaming partner's network within coverage area; currently not available for Mobile Broadband data plans. International roaming incurs additional charges and refers to usage outside of the US. 850 Roaming Coverage requires a multi-band device. Certain devices and features will not work when roaming. Ask a sales representative or visit [www.t-mobile.com/morecoverage](http://www.t-mobile.com/morecoverage) for more information. If you travel outside of coverage areas, your device will not work.

24-UP-2005#3  
8/4/16



Existing/Planned T-Mobile WCF's in proximity to the subject PH10233 –Monarch MonoPalm T-Mobile WCF





T-Mobile PH10233 – Monarch MonoPalm



Looking South



Looking South East





Looking North



Looking West