

**Simulations**  
**Photos**  
**All Graphics (no plans)**

**Legal Description  
For  
Right of Way Abandonment**

A portion of that particular Warranty Deed as recorded in Document No. 88-469837, records of Maricopa County, Arizona, and situated in a portion of the Southeast quarter of Section 27, Township 2 North, Range 4 East of the Gila and Salt River Base and Meridian, Maricopa County, Arizona, more particularly described as follows:

Commencing at the Southeast corner of said Section 27 from whence the South quarter corner bears South 89 degrees 19 minutes 41 seconds West a distance of 2621.24 feet;

Thence South 89 degrees 19 minutes 41 seconds West, along the South line of said Southeast quarter of Section 27, a distance of 459.81 feet;

Thence North 00 degrees 23 minutes 33 seconds West a distance of 33.00 feet;

Thence North 00 degrees 09 minutes 01 seconds East a distance of 22.00 feet to the **Point of Beginning**;

Thence continuing North 00 degrees 09 minutes 01 seconds East a distance of 9.74 feet to a point on the North line of said Warranty Deed;

Thence along said North line, North 87 degrees 52 minutes 06 seconds East a distance of 10.21 feet;

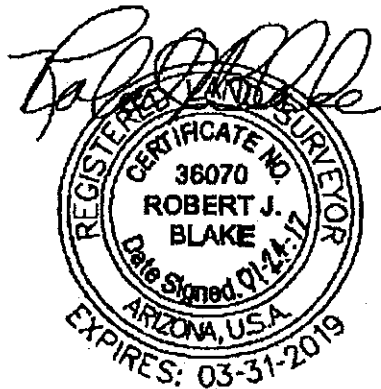
Thence continuing along said North line, North 89 degrees 19 minutes 41 seconds East a distance of 6.85 feet to the beginning of a non-tangent curve whose center bears South 54 degrees 11 minutes 20 seconds West a distance of 8.25 feet;

Thence Southerly along the arc of said curve through a central angle of 39 degrees 09 minutes 48 seconds and an arc length of 5.64 feet;

Thence South 02 degrees 02 minutes 02 seconds East, non-tangent to said curve, a distance of 4.67 feet to a point on the North line of the South 55.00 feet of said Southeast quarter of Section 27;

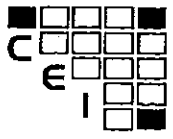
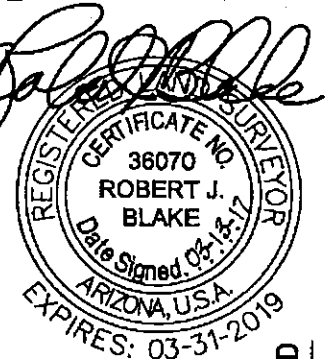
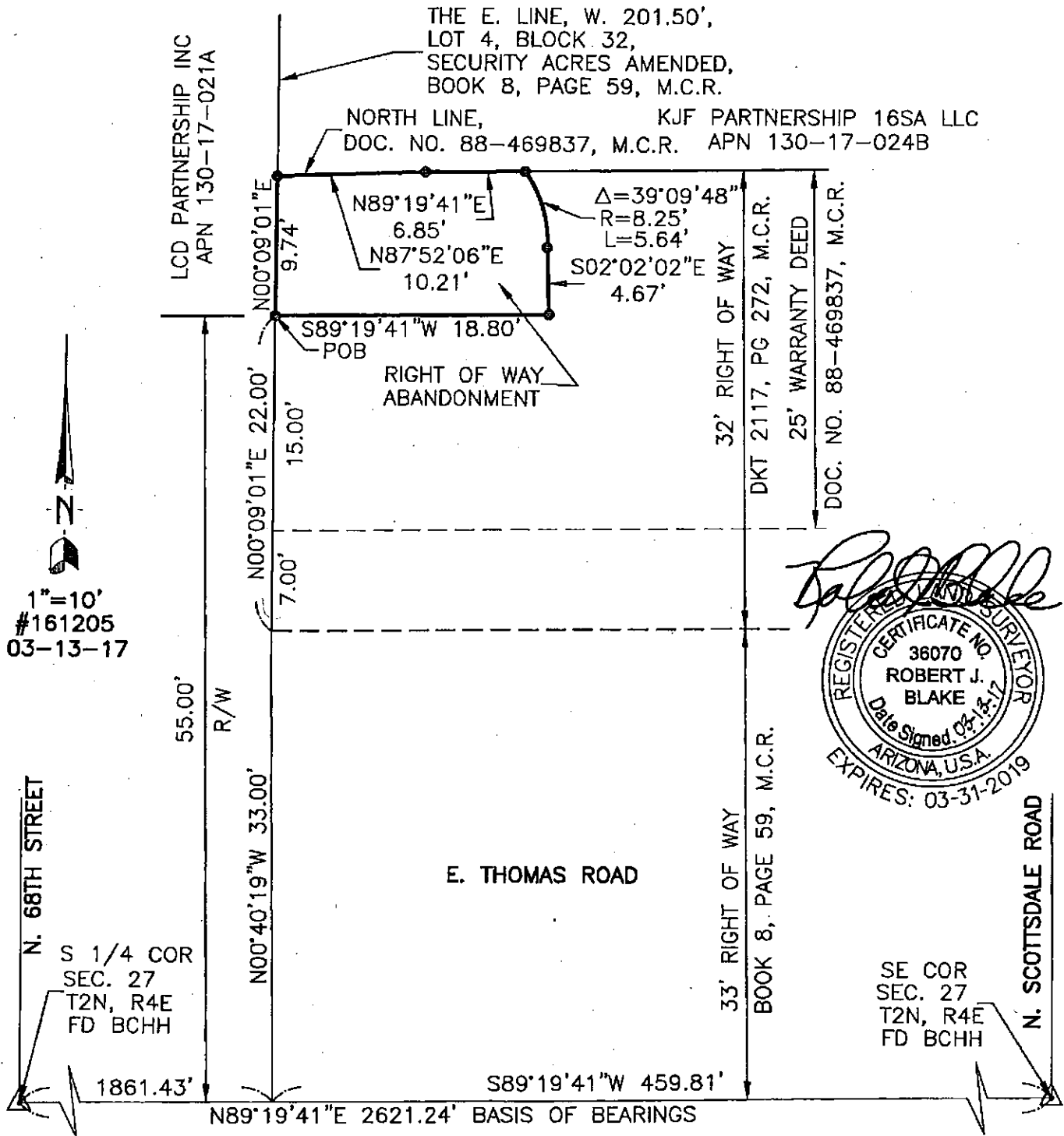
Thence South 89 degrees 19 minutes 41 seconds West a distance of 18.80 feet to the **Point of Beginning**.

Note: The above described parcel contains 183 square feet or 0.0042 acre, more or less.



# EXHIBIT B

## RIGHT OF WAY ABANDONMENT



**Clouse Engineering, Inc.**

ENGINEERS ■ SURVEYORS

5010 E. Shea Blvd Suite 110 Scottsdale, AZ. 85254  
Tel 602-395-9300 Fax 602-395-9310

EXHIBIT B  
RESOLUTION 10726  
PAGE 1 of 1