

Exterior Building Color & Material Samples

Color Drawdowns

Archaeological Resources

Airport Vicinity Development Checklist

Parking Study

Trip Generation Comparison

Parking Master Plan



Flow Test Summary

Project Name: EJFT 17261
 Project Address: 8199 E Indian Bend Rd, Scottsdale, AZ 85250
 Date of Flow Test: 2017-12-22
 Time of Flow Test: 8:10 AM
 Data Reliable Until: 2018-06-22
 Conducted By: Austin Gourley & Eder Cueva (EJ Flow Tests) 602.999.7637
 Witnessed By: Phil Cipolla (City of Scottsdale) 602.828.0847
 City Forces Contacted: City of Scottsdale (602.828.0847)
 Permit Number: C54336

Note Scottsdale requires a max static pressure of 72 psi for safety factor

Raw Flow Test Data

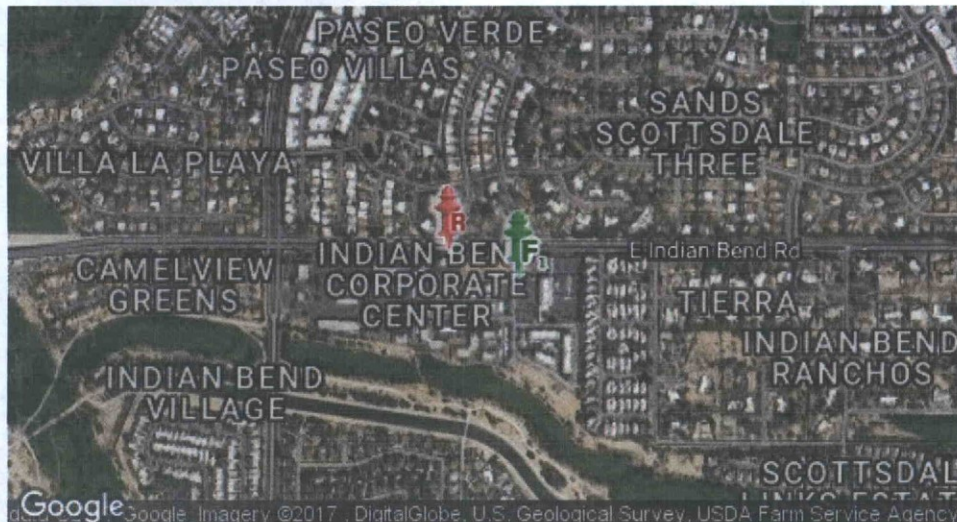
Static Pressure: 84.0 PSI
 Residual Pressure: 66.0 PSI
 Flowing GPM: 2,055
 GPM @ 20 PSI: 4,076

Data with a 12 PSI Safety Factor

Static Pressure: 72.0 PSI
 Residual Pressure: 54.0 PSI
 Flowing GPM: 2,055
 GPM @ 20 PSI: 3,644

Hydrant F₁

Pitot Pressure (1): 40 PSI
 Coefficient of Discharge (1): 0.9
 Hydrant Orifice Diameter (1): 2.5 inches
 Pitot Pressure (2): 35 PSI
 Coefficient of Discharge (2): 0.9
 Hydrant Orifice Diameter (2): 2.5 inches



 Static-Residual Hydrant

 Flow Hydrant

Distance Between F₁ and R
508 ft (measured linearly)

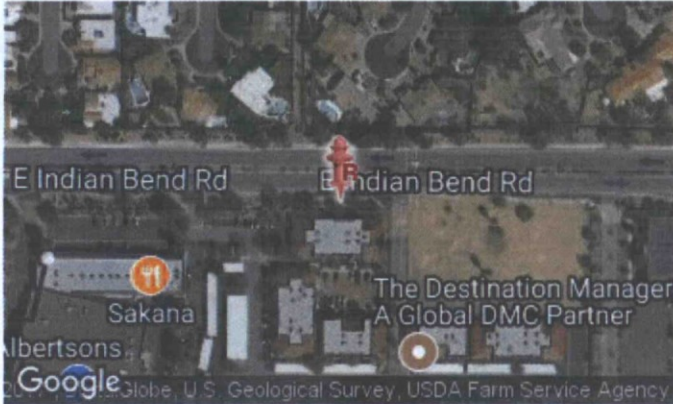
Static-Residual Elevation
1285 ft (above sea level)

Flow Hydrant (F₁) Elevation
1285 ft (above sea level)

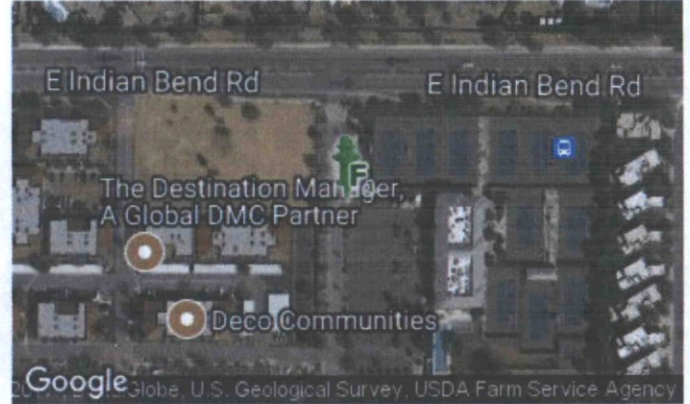
Elevation & distance values are approximate

2-DR-2018
01/03/2018

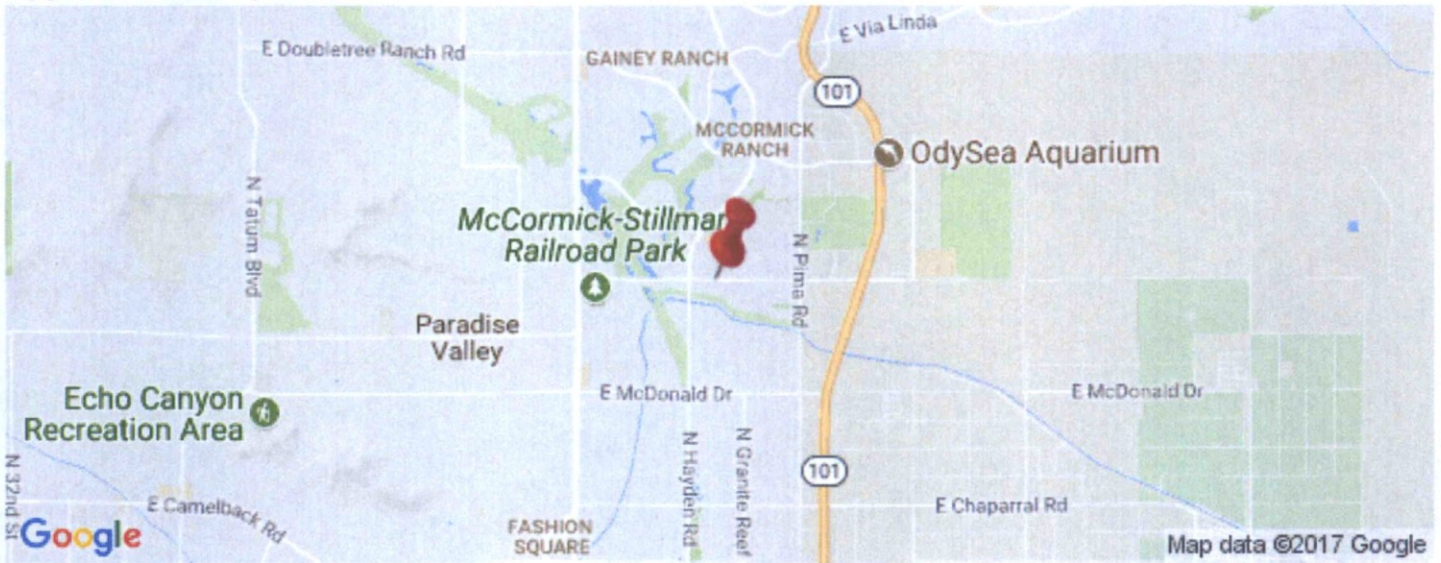
Static-Residual Hydrant



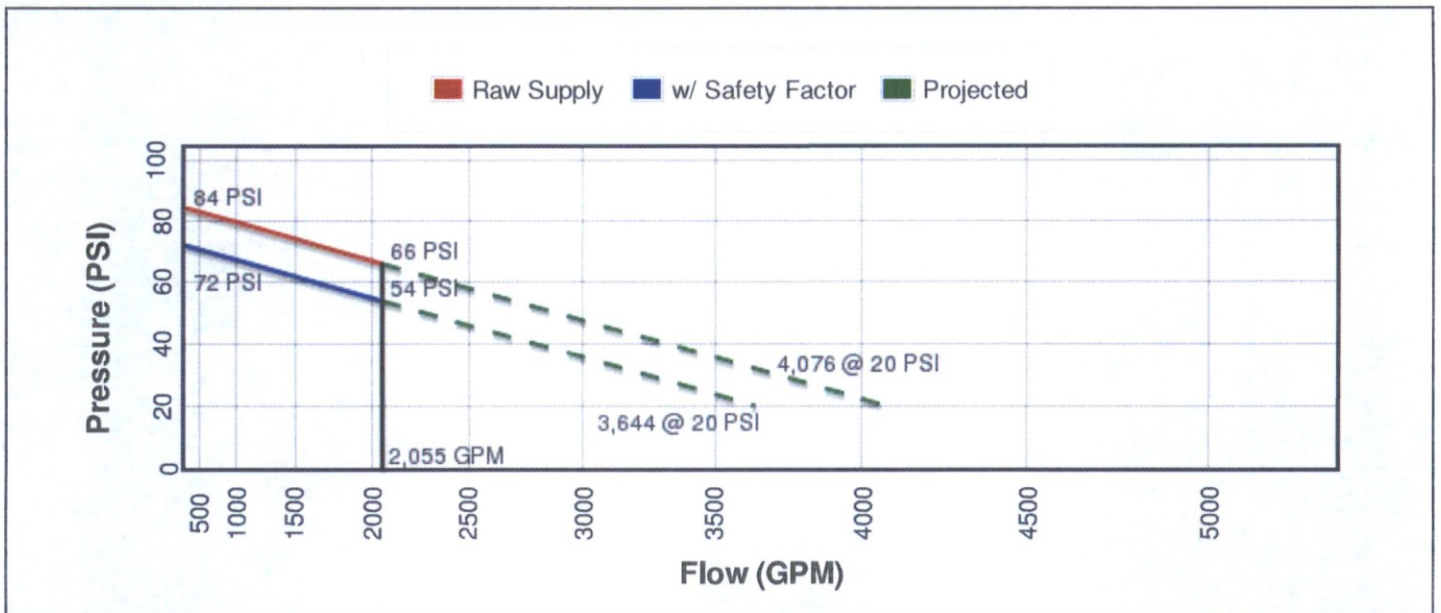
Flow Hydrant (only hydrant F1 shown for clarity)



Approximate Project Site



Water Supply Curve N^{1.85} Graph





Flow Test Summary

Project Name: EJFT 17261
 Project Address: 8199 E Indian Bend Rd, Scottsdale, AZ 85250
 Date of Flow Test: 2017-12-22
 Time of Flow Test: 8:10 AM
 Data Reliable Until: 2018-06-22
 Conducted By: Austin Gourley & Eder Cueva (EJ Flow Tests) 602.999.7637
 Witnessed By: Phil Cipolla (City of Scottsdale) 602.828.0847
 City Forces Contacted: City of Scottsdale (602.828.0847)
 Permit Number: C54336

Note Scottsdale requires a max static pressure of 72 psi for safety factor

Raw Flow Test Data

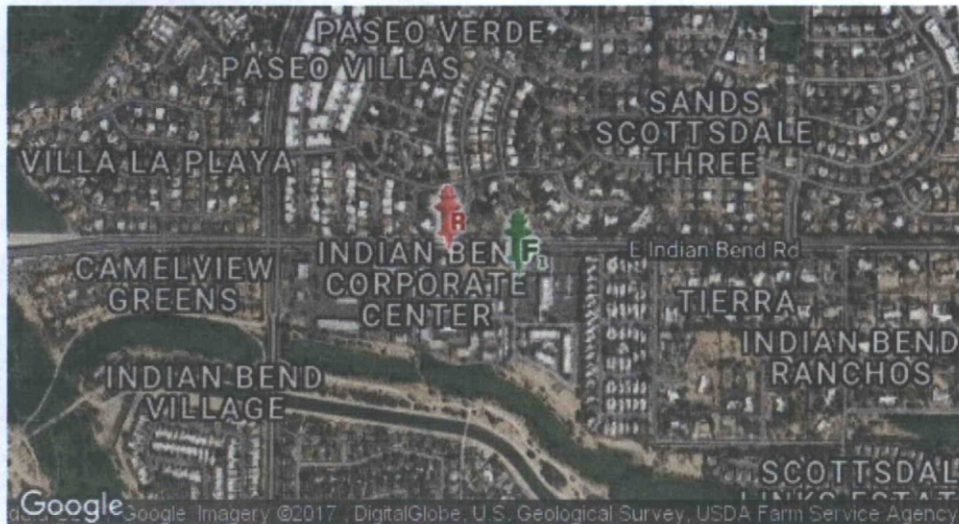
Static Pressure: 84.0 PSI
 Residual Pressure: 66.0 PSI
 Flowing GPM: 2,055
 GPM @ 20 PSI: 4,076

Data with a 12 PSI Safety Factor

Static Pressure: 72.0 PSI
 Residual Pressure: 54.0 PSI
 Flowing GPM: 2,055
 GPM @ 20 PSI: 3,644

Hydrant F₁

Pitot Pressure (1): 40 PSI
 Coefficient of Discharge (1): 0.9
 Hydrant Orifice Diameter (1): 2.5 inches
 Pitot Pressure (2): 35 PSI
 Coefficient of Discharge (2): 0.9
 Hydrant Orifice Diameter (2): 2.5 inches



 Static-Residual Hydrant

 Flow Hydrant

Distance Between F₁ and R
508 ft (measured linearly)

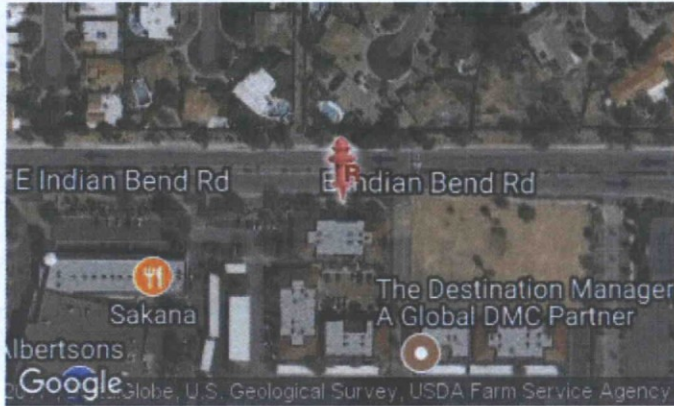
Static-Residual Elevation
1285 ft (above sea level)

Flow Hydrant (F₁) Elevation
1285 ft (above sea level)

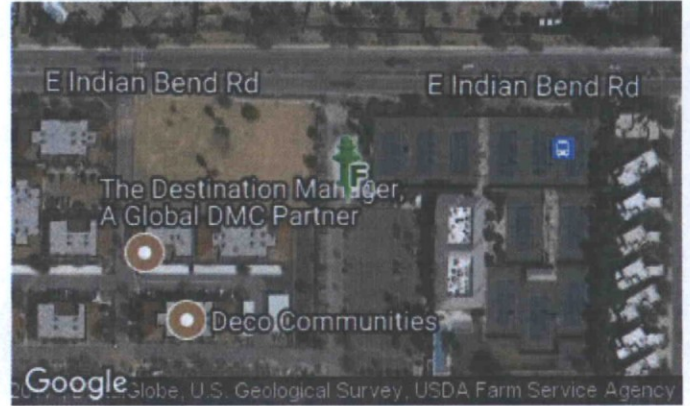
Elevation & distance values are approximate

2-DR-2018
01/03/2018

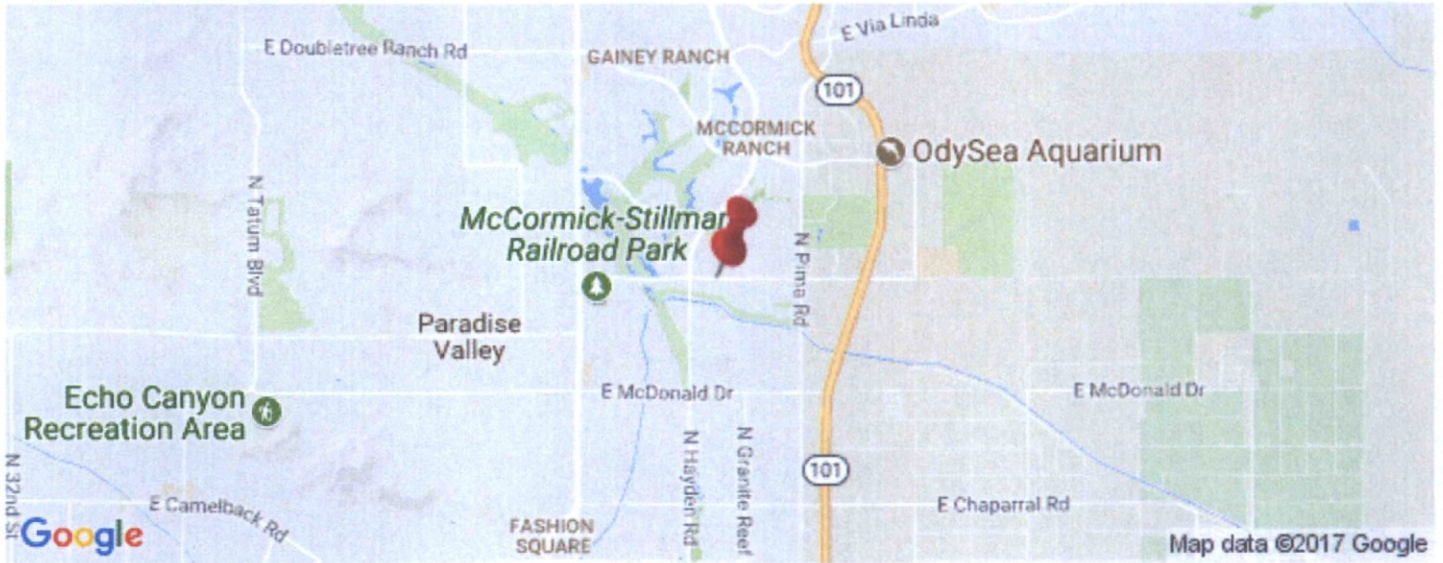
Static-Residual Hydrant



Flow Hydrant (only hydrant F1 shown for clarity)



Approximate Project Site



Water Supply Curve N^{1.85} Graph

