

NATIVE PLANT INVENTORY PLAN OVERLAY WITH NAOS PLAN

N.E. Corner
Bell Road & 94th Street
Scottsdale, AZ

Indicates Existing Native Plant

PLANT LEGEND

- # TO REMAIN IN PLACE = 90
- # SALVAGEABLE = 209
- # UNSALVAGEABLE = 149
- # NOT PROTECTED = 55

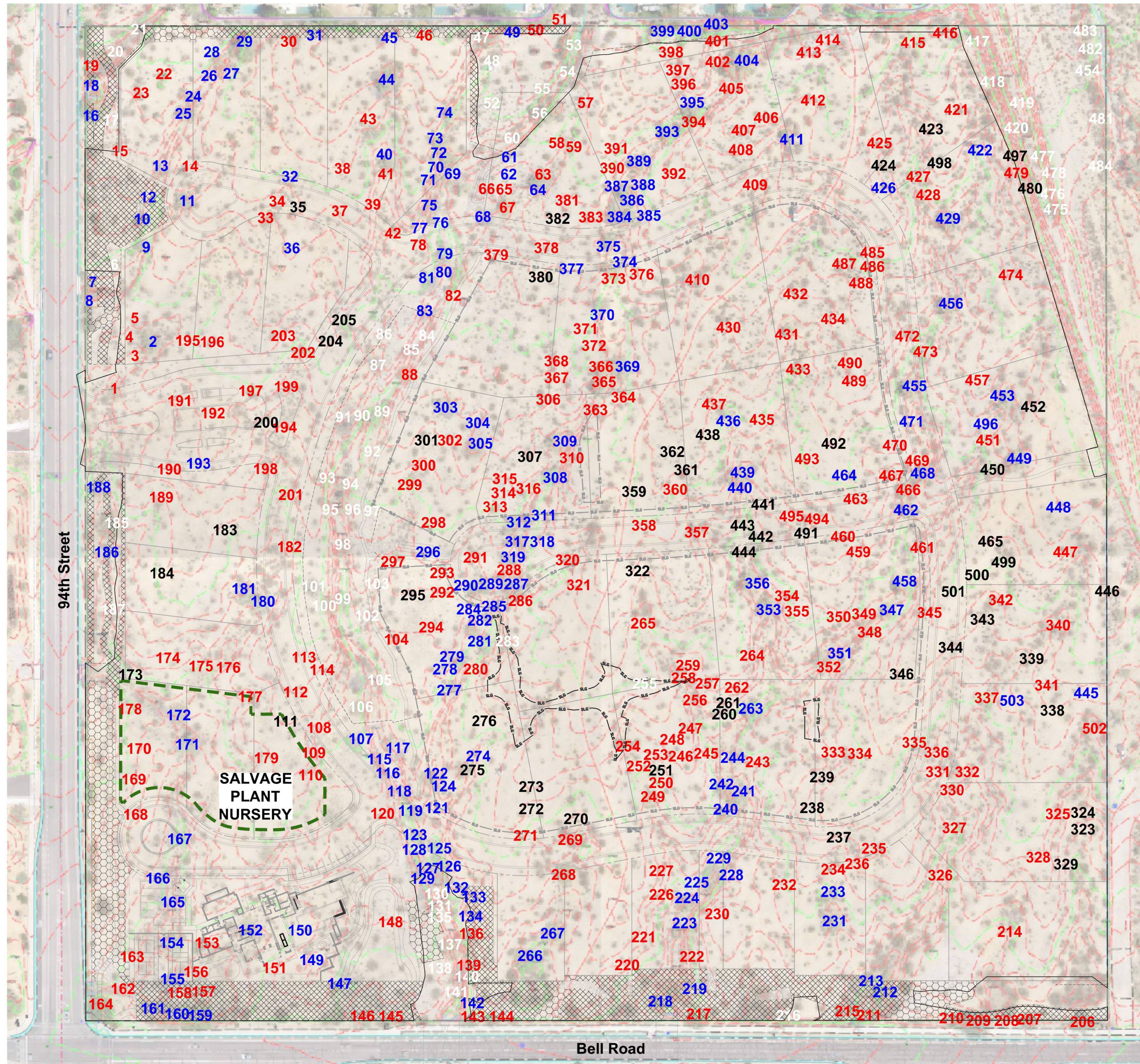
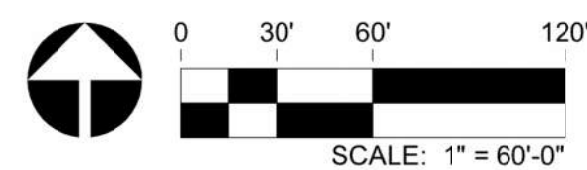
NAOS LEGEND

- N.A.O.S. UNDISTURBED AREA
- ▨ N.A.O.S. REVEGETATED AREA
- ▩ N.A.O.S. SCARRED AREA

* "See ReVeg Plan or Landscape Plan (done by others) for Final Locations of Relocated Salvage Plants"

PLANT PLAN & SALVAGE CONTRACTOR:

Tree Relocators, Inc.
6502 N. 81st Place
Scottsdale, AZ
O. 480-947-6118 F. 480-361-4824
E. treerelocators@cox.net



94TH AND BELL
SCOTTSDALE, ARIZONA

PROJECT NO: 22002497
DATE: 08/17/2023
DRAWN: TEAM
REVIEWED: TEAM

REVISIONS	
1	
2	
3	
4	
5	

NATIVE PLANT INVENTORY WITH NAOS