

K:\EAV\_Civil\291804000 - 94th St and Bell Rd\CADD\Exhibits\Wash Mod\Wash Mod - Photo Exhibit.dwg Dec 14, 2022 charles.witt  
 XREFS: XTP\_XIS\_XP\_PP-PP-PP-PP PRESENTS AND DESIGNS PRESENTED HEREON AS AN INSTRUMENT OF SERVICE, IS INTENDED ONLY FOR THE SPECIFIC PURPOSE AND CLIENT FOR WHICH IT WAS PREPARED. REUSE OF ANY PART OF THIS DOCUMENT WITHOUT WRITTEN AUTHORIZATION AND ADAPTATION BY KIMLEY-HORN AND ASSOCIATES, INC. SHALL BE WITHOUT LIABILITY TO KIMLEY-HORN AND ASSOCIATES, INC.



PHOTO 1



PHOTO 2



PHOTO 3

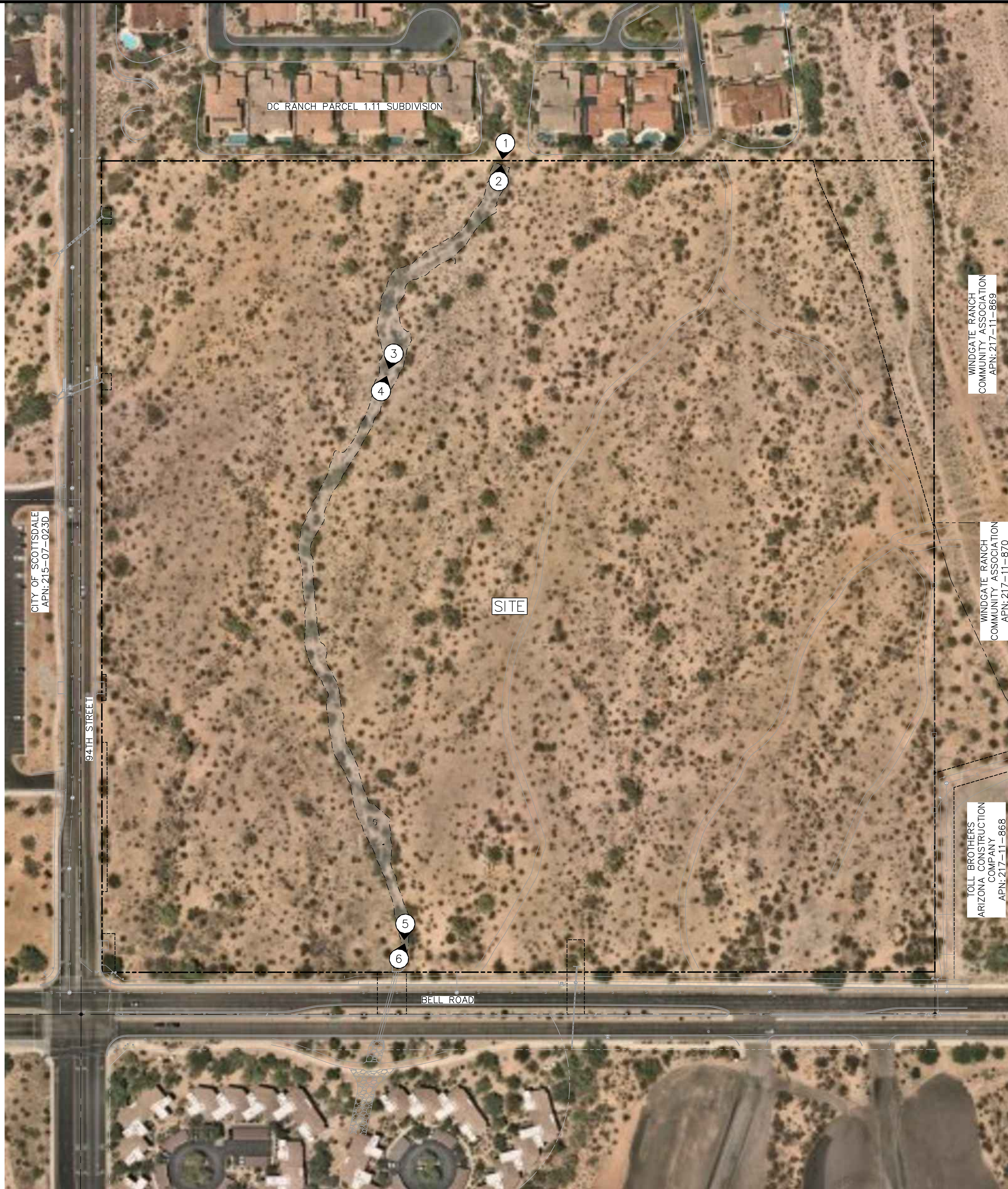


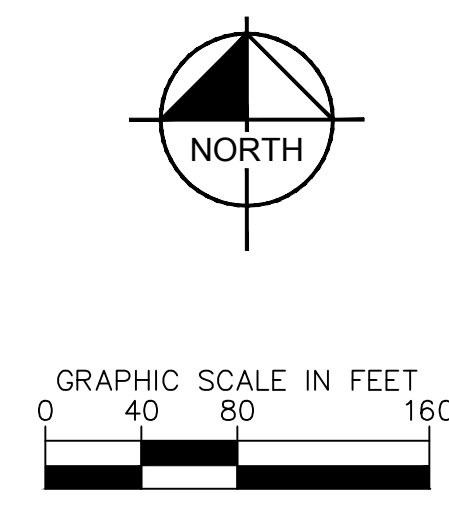
PHOTO 4



PHOTO 5



PHOTO 6

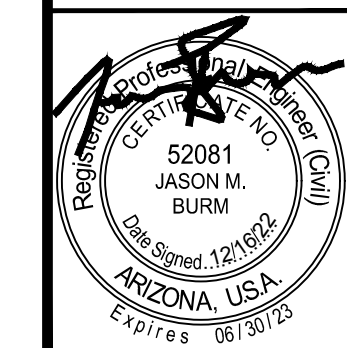


| NO. | REVISION | BY | DATE | APPR. |
|-----|----------|----|------|-------|
|     |          |    |      |       |
|     |          |    |      |       |
|     |          |    |      |       |
|     |          |    |      |       |

**Kimley-Horn**  
 C 2022 KIMLEY-HORN AND ASSOCIATES, INC.  
 1001 West Southern Avenue, Suite 131  
 Mesa, Arizona 85210 (480) 207-2866

SCALE (H): 1"=60'  
 SCALE (V): NONE  
 DESIGNED BY: CFW  
 DRAWN BY: CFW  
 CHECKED BY: JMB  
 DATE: DEC 2022

94TH STREET AND BELL ROAD  
 WASH MODIFICATION  
 SITE PLAN  
 SCOTTSDALE, ARIZONA



PROJECT NO.  
 291804000  
 DRAWING NAME  
 SITE PLAN  
 01 OF 01