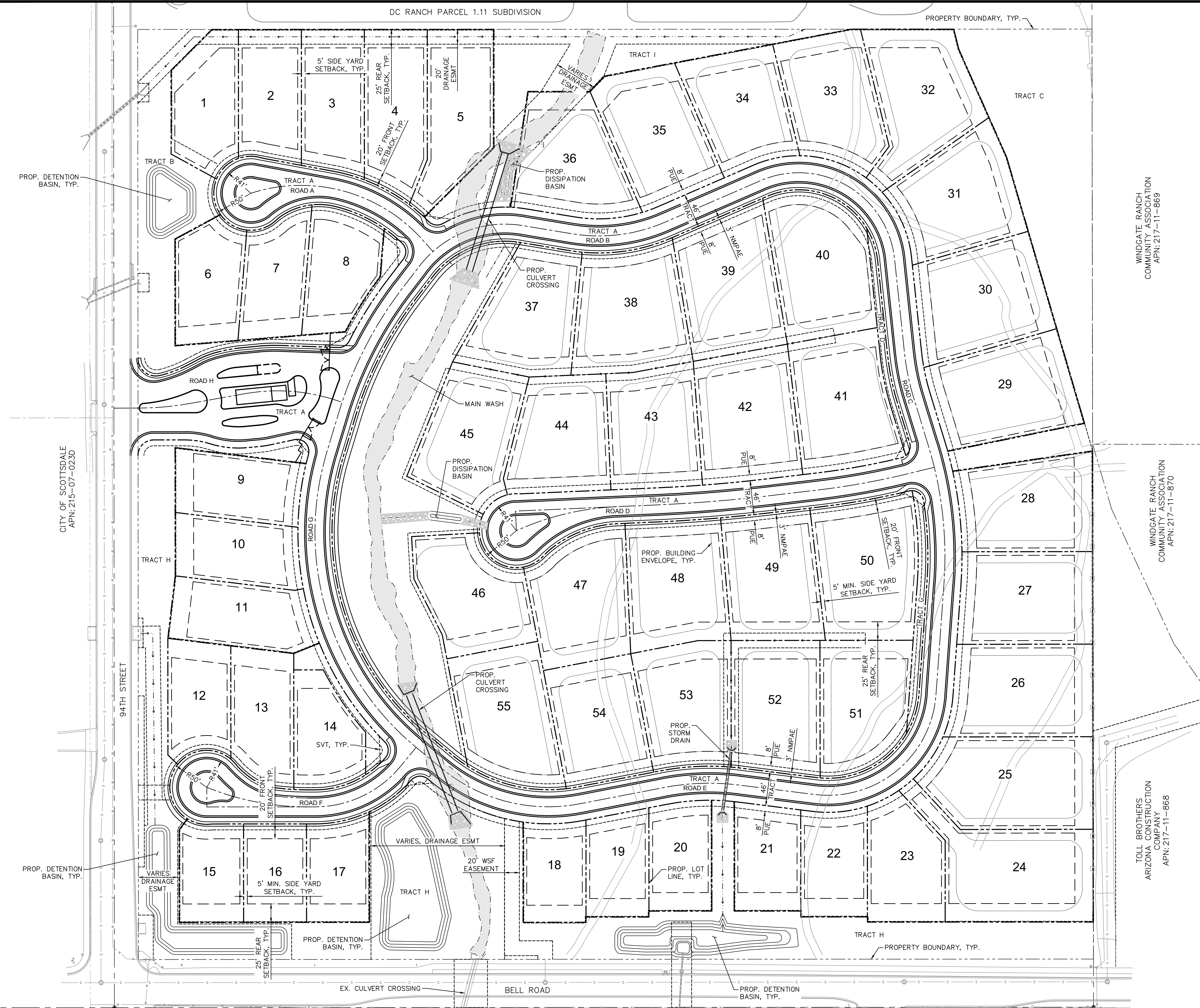


K:\EAV\_Civil\291804000 - 94th St and Bell Rd\CADD\Exhibits\Wash Mod\Wash Mod - Site Plan.dwg Dec 14, 2022 cherles.witt  
 XREFS: XTP\_AUT\_PPP\_XVS\_XFP-PROP-PP\_XSM-PP  
 THIS DOCUMENT IS THE PROPERTY OF KIMLEY-HORN AND ASSOCIATES, INC. AND IS NOT TO BE REPRODUCED OR TRANSMITTED IN ANY FORM OR BY ANY MEANS, ELECTRONIC OR MECHANICAL, WITHOUT WRITTEN PERMISSION FROM KIMLEY-HORN AND ASSOCIATES, INC. SHALL BE WITHOUT LIABILITY TO KIMLEY-HORN AND ASSOCIATES, INC.

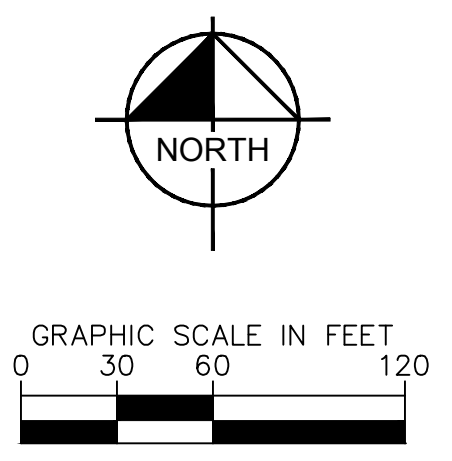


CITY OF SCOTTSDALE  
 APN: 215-07-023D

WINDGATE RANCH  
 COMMUNITY ASSOCIATION  
 APN: 217-11-869

WINDGATE RANCH  
 COMMUNITY ASSOCIATION  
 APN: 217-11-870

TOLL BROTHERS  
 ARIZONA CONSTRUCTION  
 COMPANY  
 APN: 217-11-868

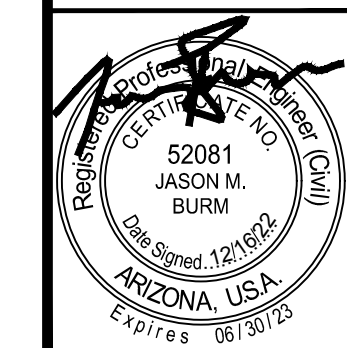


NO.	REVISION	BY	DATE	APPR.

**Kimley-Horn**  
 C 2022 KIMLEY-HORN AND ASSOCIATES, INC.  
 1001 West Southern Avenue, Suite 131  
 Mesa, Arizona 85210 (480) 207-2666

SCALE (H): 1"=60'  
 SCALE (V): NONE  
 DESIGNED BY: CFW  
 DRAWN BY: CFW  
 CHECKED BY: JMB  
 DATE: DEC 2022

94TH STREET AND BELL ROAD  
 WASH MODIFICATION  
 SITE PLAN  
 SCOTTSDALE, ARIZONA



PROJECT NO.  
 291804000  
 DRAWING NAME  
 SITE PLAN  
 01 OF 01