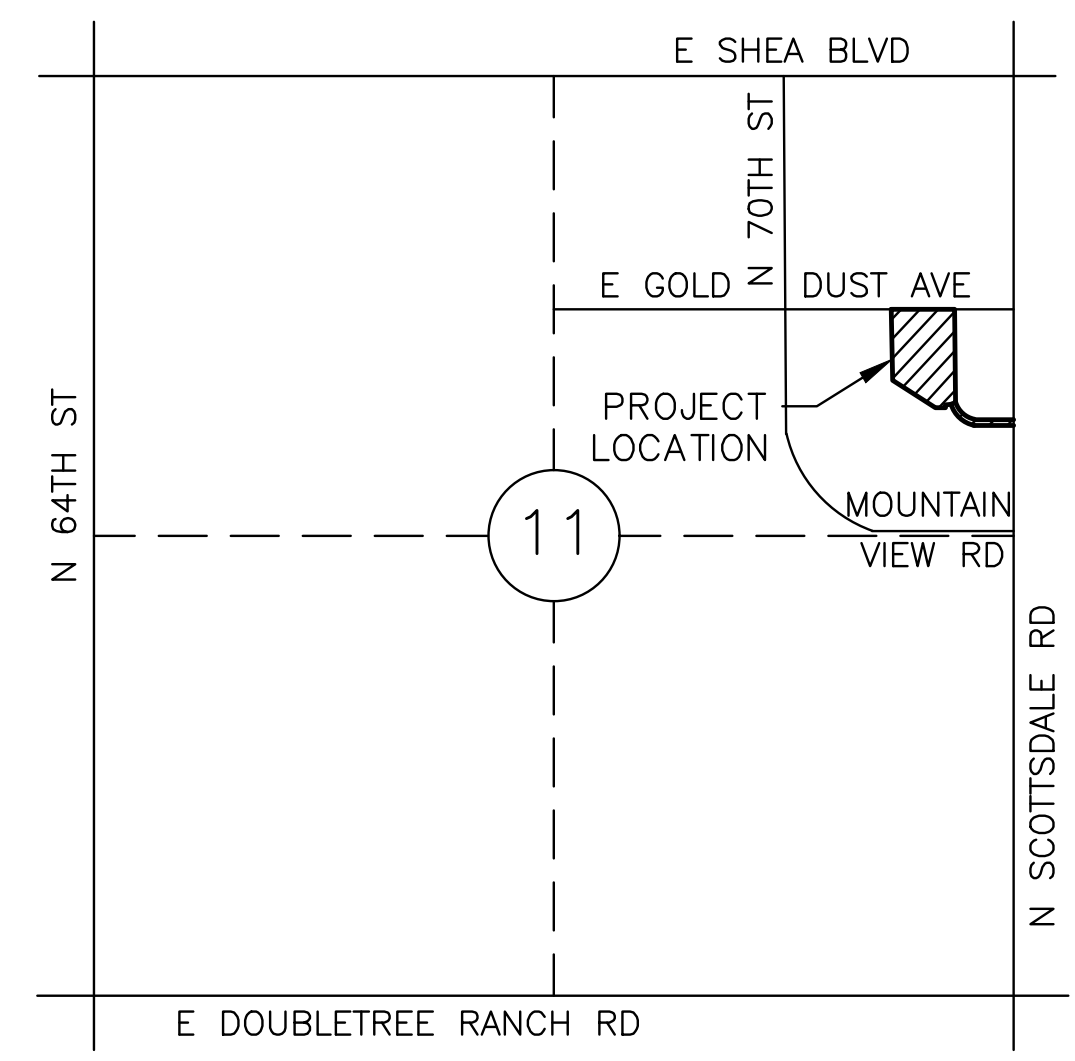
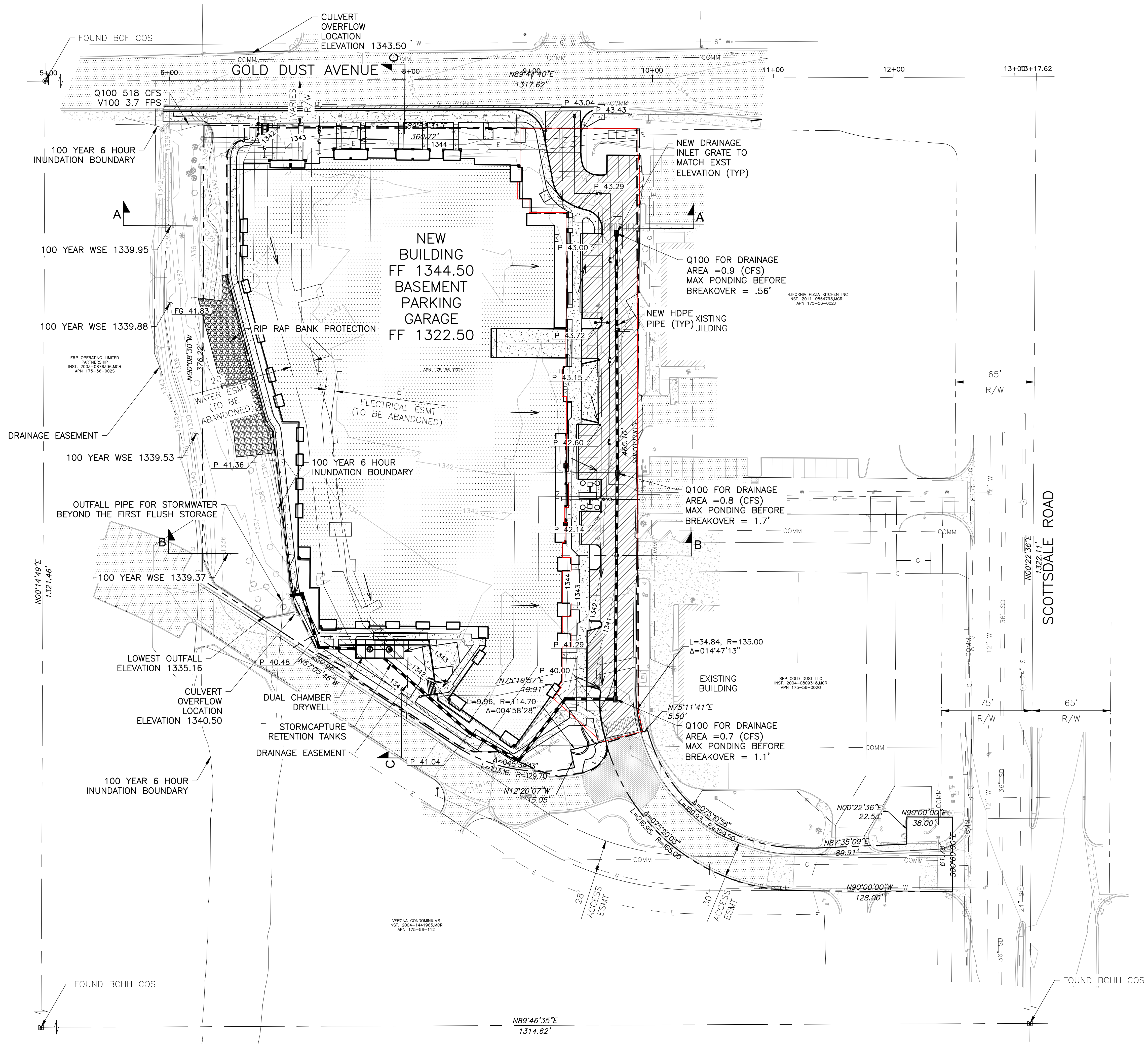


G:\2021\112028_Gold_Dust_Apartments\CAD\112028_PRELIM SITE.dwg 02/09/2022



VICINITY MAP
SEC 11 T3N R4E

RETENTION CALCULATIONS

DRAINAGE AREA

VOLUME REQUIRED:
 $V = C \cdot A \cdot (P/12)$
 $V = (0.95) \cdot (156,124 \text{ SF}) \cdot (0.5 \text{ IN}/12)$
 $V = 6,180 \text{ CF}$

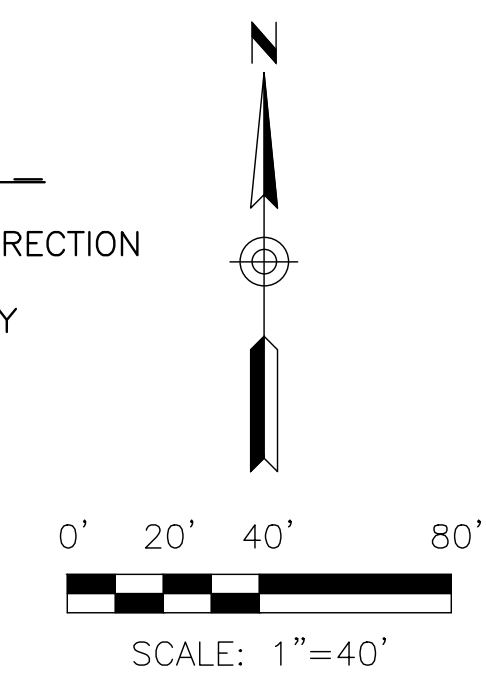
VOLUME PROVIDED:
 FIVE 14 FT TALL STORM CAPTURE RETENTION TANKS @ VOLUME PER TANK CF/TANK = 1,470 CF

TOTAL VOLUME (5) TANKS = 7,350 CF
 1 DRYWELLS TO DRAIN IN 17.2 HRS

- NOTE:
 1. ALL CURB RAMPS ON THE SUBJECT PARCEL, AND WITHIN THE PUBLIC ROW AND EASEMENTS, TO BE INVESTIGATED FOR ADA COMPLIANCE AND UPDATED ACCORDINGLY.

Plan #	
Case #	4-ZN-2022
Q-S #	
<input checked="" type="checkbox"/> Accepted	
<input type="checkbox"/> Corrections	
Reviewed By	N. Baronas
Date	9-3-22

LEGEND
 PROPOSED FLOW DIRECTION
 DRAINAGE BOUNDARY



Gold Dust Ave & Scottsdale Rd
 Scottsdale, AZ



500 Washington Avenue South, Suite 1080
 Minneapolis, MN 55415
 p 612.339.5508 | f 612.339.5382
 www.esgarch.com



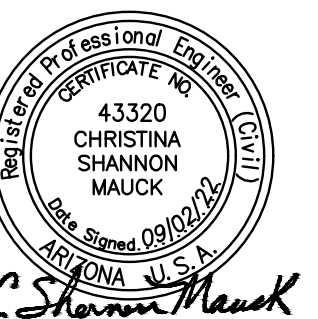
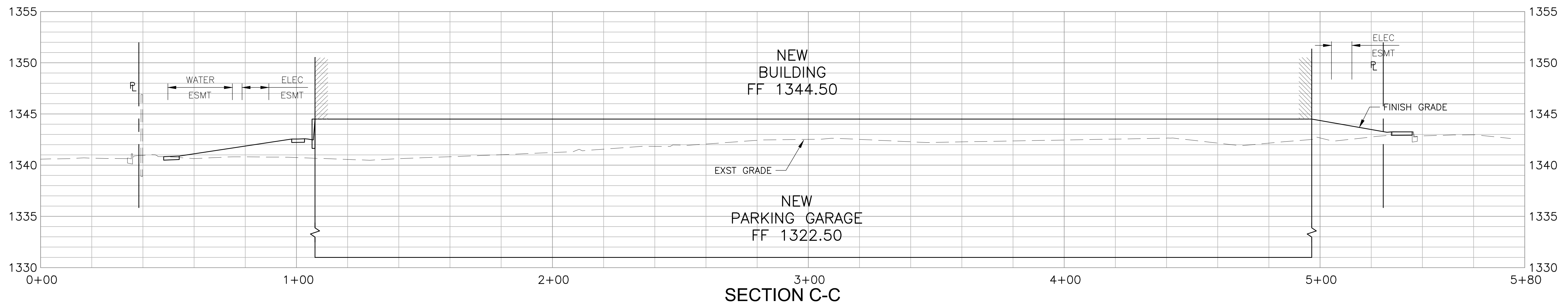
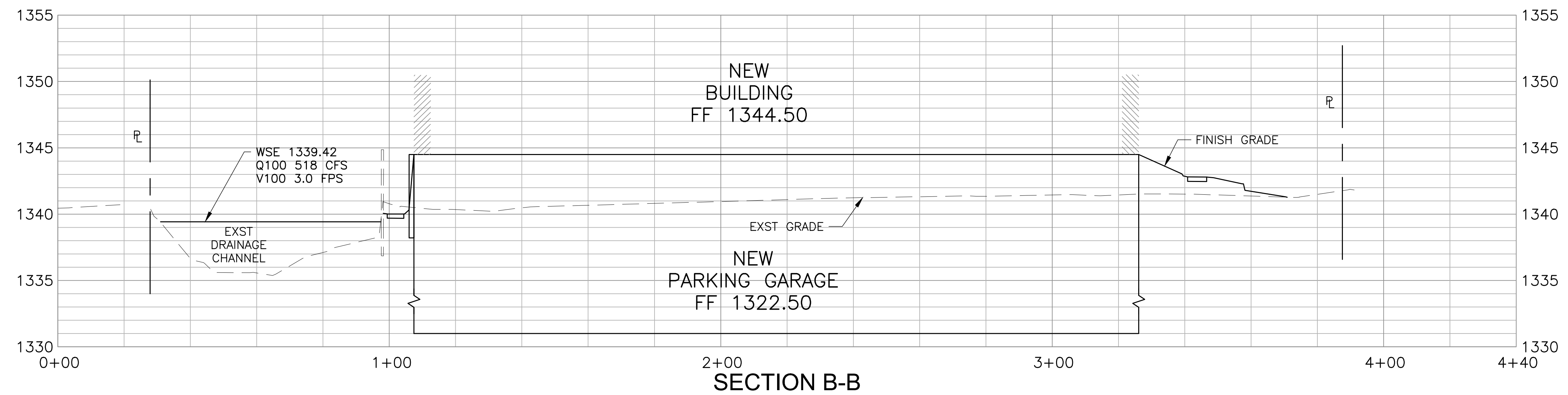
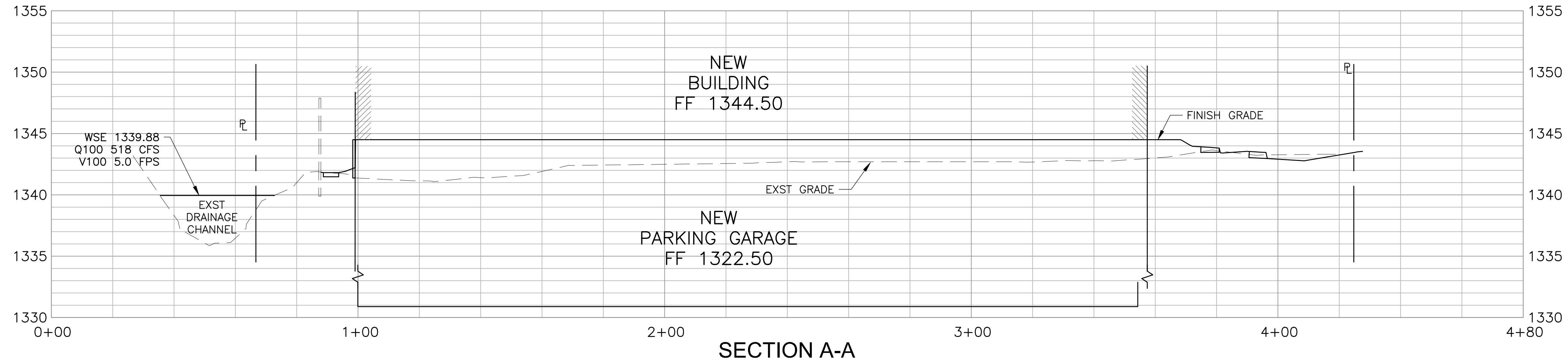
PRELIMINARY GRADING & DRAINAGE PLAN

C1.1





500 Washington Avenue South, Suite 1080
Minneapolis, MN 55415
p 612.339.5508 | f 612.339.5382
www.esgarch.com



G:\2021\112028_Gold_Dust_Apartments\CA0\112028_PRELIM\SITE.dwg 02/09/2022