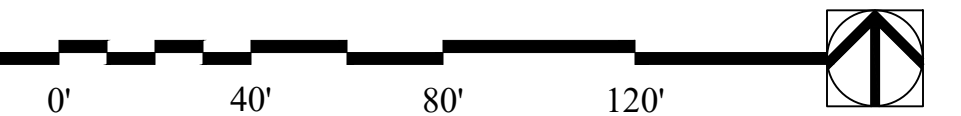


Headwaters Group
Scottsdale, Arizona

Hardscape Plan - Site Concept

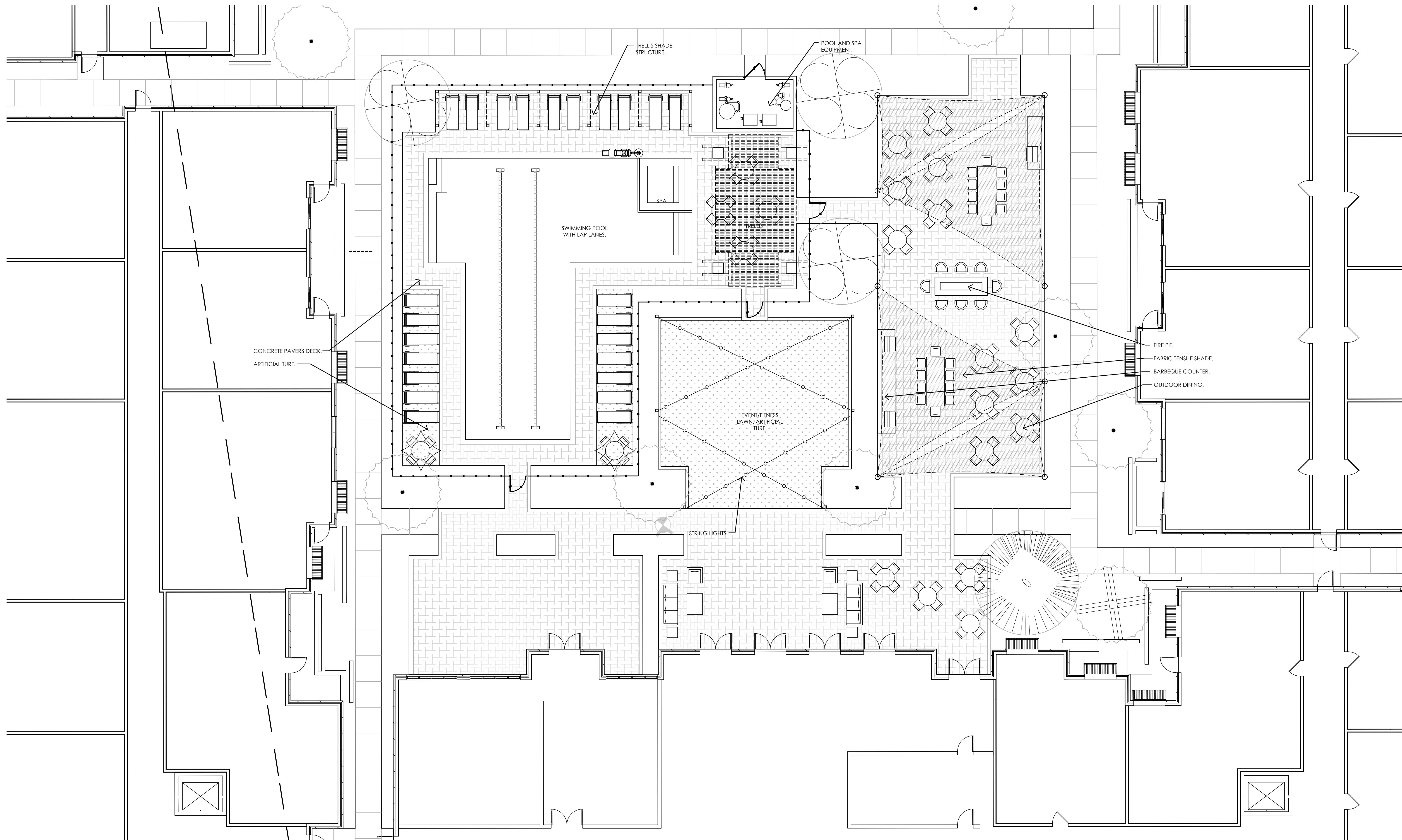


April 3, 2023

GREY | PICKETT
landscape architecture | community design

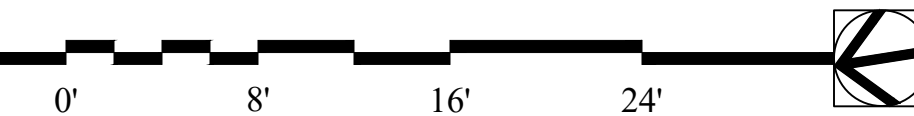
Copyright © 2007 by
Greedy | Pickett Professional Corp.

DESIGN IS FOR CONCEPT PURPOSES ONLY.
NOT TO BE USED FOR CONSTRUCTION



Headwaters Group
Scottsdale, Arizona

Courtyard Enlargement



March 14, 2023

GREY | PICKETT
landscape architecture | community design

Copyright © 2007 by
Greedy | Pickett Professional Corp.

DESIGN IS FOR CONCEPT PURPOSES ONLY.
NOT TO BE USED FOR CONSTRUCTION.

NATIVE PLANT INVENTORY PLAN

HEADWATERS 13870 N FRANK LLOYD WRIGHT BLVD. SCOTTSDALE, ARIZONA.

PLANT SYMBOL LEGEND

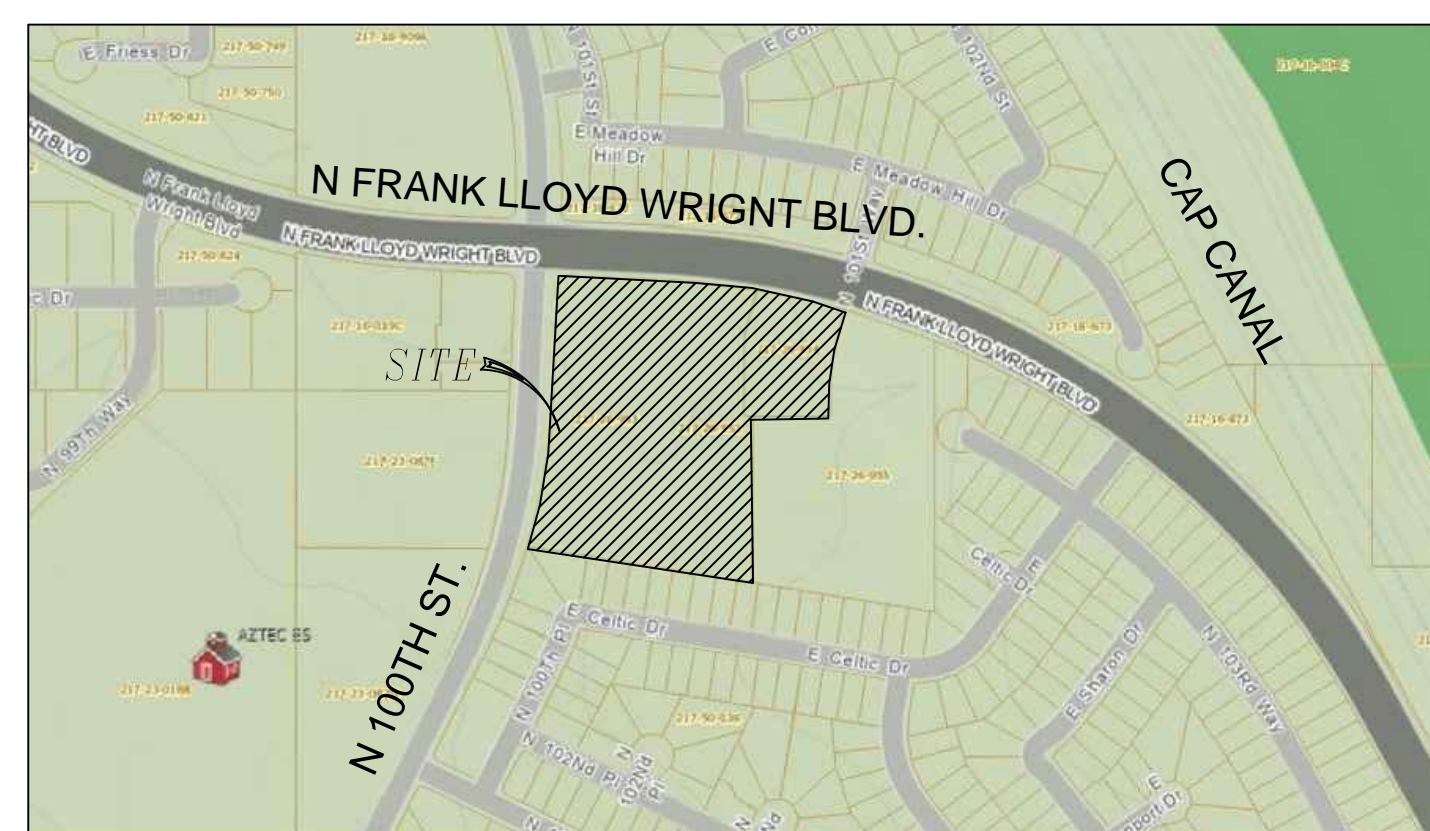
- SALVAGE TREE
- NON-SALVAGEABLE TREE
- REMAIN IN PLACE TREE
- ⊗ SALVAGE CACTI
- △ NON-SALVAGEABLE CACTI
- REMAIN IN PLACE CACTI

TAG # COLOR CODE

- RED = SALVAGE
- BLUE = DESTROY
- BLACK = REMAIN IN PLACE

SHEET INDEX

| | |
|----------------|---|
| COVER SHEET | 1 |
| INVENTORY PLAN | 2 |



VICINITY MAP

N.T.S.

GENERAL INVENTORY/SALVAGE NOTES

- PLANT MATERIALS MUST BE INDIVIDUALLY TAGGED IN THE FIELD AT THE TIME THE INVENTORY PLANS ARE SUBMITTED. TAGGED MATERIALS MUST BE CLEARLY MARKED WITH WATERPROOF INK AND INCLUDE THE NUMBER WHICH CORRESPONDS TO THE NUMBER SHOWN ON THE PLANS.
- ALL PLANT MATERIALS MUST REMAIN ON SITE UNTIL THE SALVAGE PLAN IS APPROVED.
- TAGS MUST BE ATTACHED SO THAT THEY WILL REMAIN ON THE PLANT FOR THE DURATION OF THE SALVAGE AND NURSERY STORAGE PERIOD.
- ALL SALVAGEABLE MATERIAL IS TO BE CLEARLY FLAGGED WITH TAPE OR PLASTIC TAGS VISIBLE FROM ALL DIRECTIONS. TAGS SHALL BE NUMBERED TO CORRESPOND WITH THE PLANT INVENTORY PLAN AND LEGEND.

COLOR CODE AS FOLLOWS:
RED - SALVAGE AND RELOCATE
WHITE - PRESERVE AND PROTECT IN PLACE
BLUE - DESTROY, NOT SALVAGEABLE AND CANNOT REMAIN IN PLACE
- ALL SALVAGEABLE PLANTS WILL BE STORED AT AN ON-SITE HOLDING YARD AND WILL BE RE-PLANTED AT A LATER DATE ON-SITE.
- ALL MISCELLANEOUS CACTI UNDER 3' IN HEIGHT WILL BE SALVAGED AND STORED IN THE NURSERY IF THEY ARE WITHIN THE BUILDING ENVELOPE AND AFFECTED BY CONSTRUCTION.
- UPON REMOVAL OF SALVAGEABLE NATIVE PLANTS THE SALVAGE CONTRACTOR SHALL SUBMIT A LIST IDENTIFYING THE TAG NUMBER OF THE PLANTS SURVIVING SALVAGE OPERATIONS TO THE CITY'S LANDSCAPE INSPECTOR PRIOR TO ISSUANCE OF THE CERTIFICATE OF OCCUPANCY.
- CONTRACTOR IS RESPONSIBLE FOR VERIFYING ALL PROJECT PROPERTY LINES PRIOR TO SALVAGE. ANY PLANT MATERIAL THAT IS LABELED SALVAGEABLE OR NON-SALVAGEABLE OUTSIDE OF FINAL STAKING BOUNDARIES IS TO REMAIN IN PLACE UNLESS OTHERWISE DIRECTED BY OWNER.
- CONTRACTOR TO VERIFY WITH OWNER ALL PLANT MATERIAL LABELED SALVAGEABLE OR NON-SALVAGEABLE ADJACENT TO N.A.O.S. BOUNDARIES AND/OR DRAINAGE WAYS

LANDSCAPE ARCHITECT

GREEY/PICKETT
7144 E. STETSON DR., SUITE 205
SCOTTSDALE, ARIZONA 85251
PHONE 480-609-0009
CONTACT: RICHARD GEHRKE
EMAIL: rgehrke@greepickett.com

INVENTORY PROVIDER

BLACK EAGLE NURSERIES & MAINTENANCE, INC
P.O. BOX 27849
TEMPE, ARIZONA 85285
PHONE 602-323-1558
CONTACT: CLAY ZORNS
EMAIL: czorns@blackeagleaz.com

NATIVE PLANT LIST

| Tag # | Plant Name | Condition | Status (S D R) | Salvageability Comments | Caliper Inches | Tree Height | Tree Width | Saguaro Trunk (s) | # of Arms | L.F. of Arms | Saguaro Height | Other Cacti Ht |
|-------|---------------------|-----------|----------------|----------------------------|----------------|-------------|------------|-------------------|-----------|--------------|----------------|----------------|
| 1 | Foothill Palo Verde | Good | S | | 18 | 22 | 30 | | | | | |
| 2 | Saguaro | Good | S | | | | | 7+4 | 0 | 0 | 11 | |
| 3 | Ironwood | Fair | D | Wide Base/Multi Trunk | 32 | 20 | 30 | | | | | |
| 4 | Foothill Palo Verde | Good | S | | 13 | 16 | 22 | | | | | |
| 5 | Foothill Palo Verde | Good | S | | 9 | 13 | 11 | | | | | |
| 6 | Native Mesquite | Fair | D | Branch Structure/Poor Form | 24 | 25 | 35 | | | | | |
| 7 | African Sumac | Poor | D | Proximity to Wall | 12 | 15 | 17 | | | | | |
| 8 | African Sumac | Poor | D | Proximity to Wall | 13 | 17 | 14 | | | | | |
| 9 | Ironwood | Good | S | | 12 | 14 | 14 | | | | | |
| 10 | Foothill Palo Verde | Good | S | | 12 | 13 | 16 | | | | | |
| 11 | African Sumac | Poor | D | Proximity to Wall | 13 | 18 | 16 | | | | | |
| 12 | African Sumac | Poor | D | Proximity to Wall | 18 | 20 | 18 | | | | | |
| 13 | Willow Acacia | Poor | D | Proximity to Wall | 12 | 30 | 12 | | | | | |
| 14 | Willow Acacia | Poor | D | Angled Trunk | 19 | 30 | 35 | | | | | |
| 15 | Foothill Palo Verde | Good | S | | 20 | 22 | 28 | | | | | |
| 16 | Hackberry | Poor | D | Proximity to Wall | 4 | 6 | 6 | | | | | |
| 17 | African Sumac | Poor | D | Proximity to Wall | 14 | 16 | 13 | | | | | |
| 18 | African Sumac | Poor | D | Proximity to Wall | 9 | 12 | 10 | | | | | |
| 19 | Willow Acacia | Fair | D | Proximity to Wall | 13 | 25 | 12 | | | | | |
| 20 | Willow Acacia | Fair | D | Proximity to Wall | 13 | 22 | 12 | | | | | |
| 21 | Foothill Palo Verde | Fair | D | Wide Base/Multi Trunk | 15 | 18 | 26 | | | | | |
| 22 | Blue Palo Verde | Fair | D | Proximity to Asphalt | 8 | 12 | 10 | | | | | |
| 23 | Saguaro | Poor | D | Unhealthy/Holes | | | | 22 | 7 | 33 | 55 | |
| 24 | Ironwood | Excellent | S | | 13 | 17 | 15 | | | | | |
| 25 | Foothill Palo Verde | Good | S | | 8 | 12 | 10 | | | | | |
| 26 | Blue Palo Verde | Fair | D | Wide Base/Multi Trunk | 18 | 18 | 24 | | | | | |
| 27 | Foothill Palo Verde | Good | S | | 9 | 13 | 12 | | | | | |
| 28 | Blue Palo Verde | Fair | D | Branch Structure/Poor Form | 17 | 18 | 22 | | | | | |
| 29 | Foothill Palo Verde | Poor | D | Branch Structure/Poor Form | 5 | 9 | 5 | | | | | |
| 30 | Native Mesquite | Good | S | | 15 | 18 | 20 | | | | | |
| 31 | Blue Palo Verde | Poor | D | Proximity to #30 | 9 | 10 | 12 | | | | | |
| 32 | Foothill Palo Verde | Poor | D | Branch Structure/Poor Form | 14 | 18 | 20 | | | | | |
| 33 | Foothill Palo Verde | Poor | D | Side of Wash | 6 | 9 | 6 | | | | | |
| 34 | Foothill Palo Verde | Excellent | S | | 9 | 13 | 10 | | | | | |
| 35 | Foothill Palo Verde | Fair | D | Exposed Roots | 10 | 12 | 15 | | | | | |
| 36 | Foothill Palo Verde | Excellent | S | | 6 | 9 | 9 | | | | | |
| 37 | Ironwood | Fair | D | Wide Base/Multi Trunk | 18 | 20 | 24 | | | | | |
| 38 | Foothill Palo Verde | Poor | D | Diseased/Unhealthy | 9 | 12 | 12 | | | | | |
| 39 | Foothill Palo Verde | Poor | D | Diseased/Unhealthy | 20 | 22 | 24 | | | | | |
| 40 | Foothill Palo Verde | Poor | D | Diseased/Unhealthy | 10 | 14 | 13 | | | | | |
| 41 | Foothill Palo Verde | Poor | D | Angled Trunk | 9 | 11 | 9 | | | | | |
| 42 | Foothill Palo Verde | Poor | D | Wide Base/Multi Trunk | 15 | 18 | 20 | | | | | |
| 43 | Foothill Palo Verde | Poor | D | Branch Structure/Poor Form | 18 | 16 | 22 | | | | | |
| 44 | Foothill Palo Verde | Good | S | | 12 | 16 | 15 | | | | | |
| 45 | Ironwood | Fair | D | Wide Base/Multi Trunk | 36 | 25 | 35 | | | | | |
| 46 | Foothill Palo Verde | Poor | D | Angled Trunk | 11 | 12 | 15 | | | | | |
| 47 | Foothill Palo Verde | Poor | D | Angled Trunk | 10 | 12 | 14 | | | | | |
| 48 | Saguaro | Good | S | | | | | 7 | 0 | 0 | 7 | |
| 49 | Saguaro | Good | S | | | | | 4 | 0 | 0 | 4 | |
| 50 | Foothill Palo Verde | Good | S | | 10 | 13 | 15 | | | | | |
| 51 | Foothill Palo Verde | Good | S | | 6 | 9 | 6 | | | | | |
| 52 | Foothill Palo Verde | Fair | D | Branch Structure/Poor Form | 15 | 18 | 20 | | | | | |
| 53 | Foothill Palo Verde | Good | S | | 13 | 16 | 20 | | | | | |
| 54 | Foothill Palo Verde | Poor | D | Branch Structure/Poor Form | 11 | 14 | 10 | | | | | |
| 55 | Foothill Palo Verde | Good | S | | 8 | 11 | 10 | | | | | |
| 56 | Foothill Palo Verde | Poor | D | Branch Structure/Poor Form | 11 | 14 | 12 | | | | | |
| 57 | Saguaro | Good | S | | | | | 6 | 0 | 0 | 6 | |
| 58 | Foothill Palo Verde | Good | S | | 8 | 11 | 10 | | | | | |
| 59 | Ironwood | Good | S | | 24 | 25 | 30 | | | | | |
| 60 | Ironwood | Good | S | | 18 | 25 | 25 | | | | | |
| 61 | Ironwood | Good | S | | 20 | 25 | 30 | | | | | |
| 62 | Native Mesquite | Good | S | | 9 | 12 | 12 | | | | | |
| 63 | Foothill Palo Verde | Fair | D | Branch Structure/Poor Form | 11 | 13 | 12 | | | | | |
| 64 | Saguaro | Poor | D | Dying | | | | 4 | 0 | 0 | 4 | |
| 65 | Barrel | Good | S | | | | | | | | | 3 |
| 66 | Barrel | Good | S | | | | | | | | | 4 |
| 67 | Foothill Palo Verde | Good | S | | 15 | 17 | 17 | | | | | |
| 68 | Barrel | Good | S | | | | | | | | | 4 |
| 69 | Foothill Palo Verde | Good | S | | 13 | 15 | 15 | | | | | |
| 70 | Foothill Palo Verde | Good | S | | 7 | 12 | 10 | | | | | |

| Summary | Trees | Acti | Total | Status Abbreviation |
|---------------------------|-----------|----------|-----------|---------------------|
| Salvageable | 25 | 7 | 32 | S = Salvageable |
| Destroy (Non-Salvageable) | 36 | 2 | 38 | D = Destroy |
| Remain in Place | 0 | 0 | 0 | R = Remain In Place |
| Total Plants | 61 | 9 | 70 | |

| Botanical Name | Common Name |
|--------------------------|---------------------|
| Acacia salacina | Willow Acacia |
| Carnegiea gigantea | Saguaro |
| Celtis pallida | Desert Hackberry |
| Ferocactus wislizenii | Fishhook Barrel |
| Olneya tesota | Ironwood |
| Parkinsonia floridum | Blue Palo Verde |
| Parkinsonia microphyllum | Foothill Palo Verde |
| Prosopis velutina | Native Mesquite |
| Rhus lancea | African Sumac |

BLACK EAGLE
NURSERIES & MAINTENANCE, INC
P.O. BOX 27849
TEMPE, AZ 85285
PHONE 602-323-1558 FAX 602-323-1980

NATIVE PLANT INVENTORY PLAN
HEADWATERS
13870 N FRANK LLOYD WRIGHT BLVD.
SCOTTSDALE, ARIZONA

REVISIONS:

REV. A

REV. B

REV. C

DESIGN BY: N/A

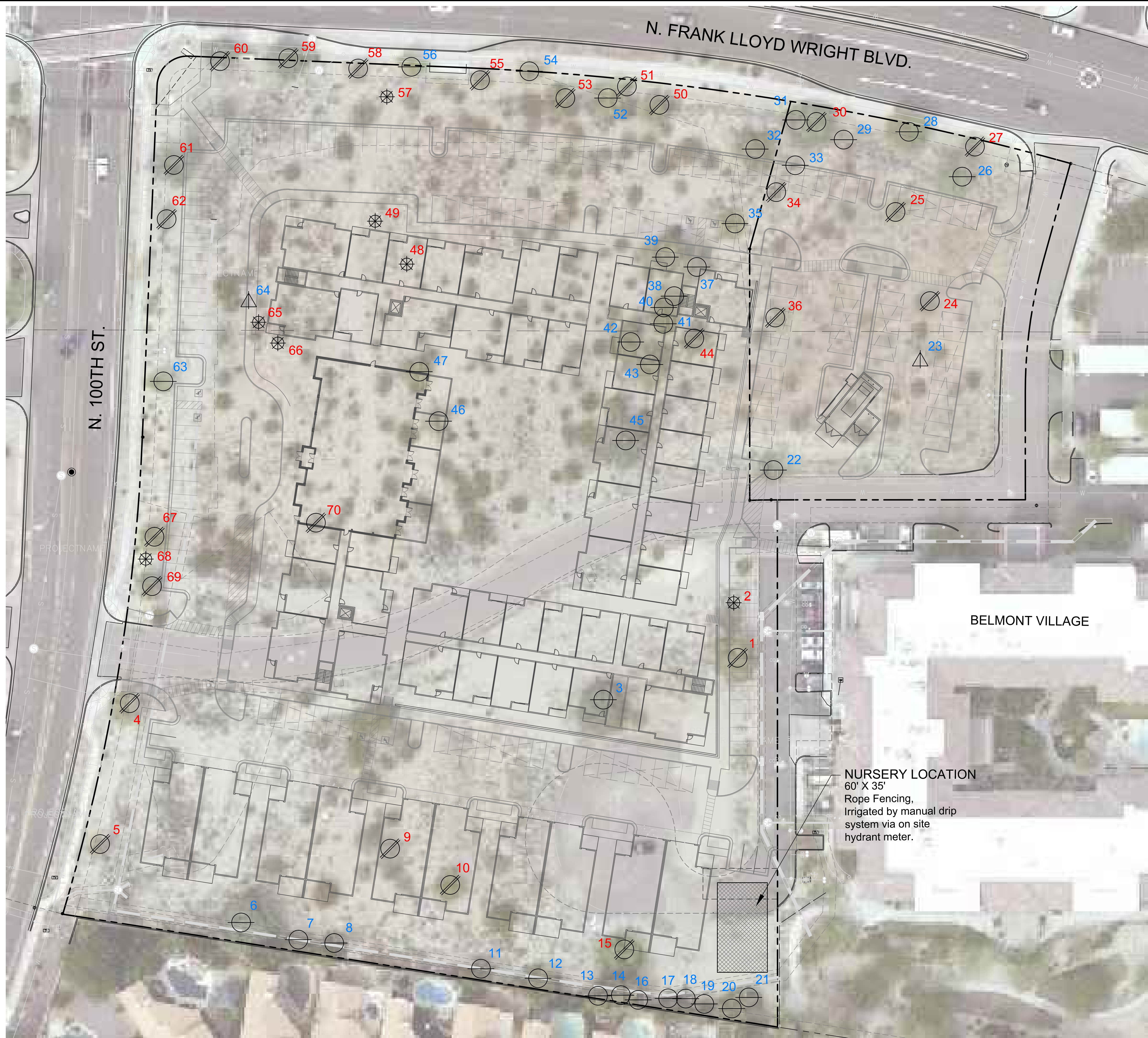
DRAWN BY: CZ

SCALE: 1" = 30'

DATE: 12/13/22

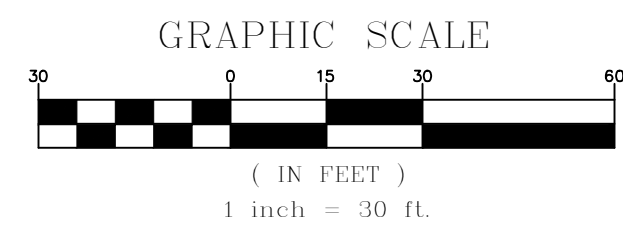
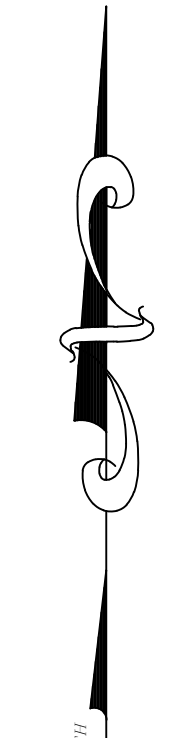
JOB No.: 121323

1 of 2



- PLANT SYMBOL LEGEND**
- ⊗ SALVAGE TREE
 - NON-SALVAGEABLE TREE
 - ◻ REMAIN IN PLACE TREE
 - ⊗ SALVAGE CACTI
 - △ NON-SALVAGEABLE CACTI
 - ◻ REMAIN IN PLACE CACTI

NURSERY LOCATION
 60' X 35'
 Rope Fencing,
 Irrigated by manual drip
 system via on site
 hydrant meter.



BLACK EAGLE
 NURSERIES & MAINTENANCE, INC
 P.O. BOX 27849
 TEMPE AZ, 85285
 PHONE 602-323-1558 FAX 602-323-1980.

NATIVE PLANT INVENTORY PLAN
 HEADWATERS
 13870 N FRANK LLOYD WRIGHT BLVD.
 SCOTTSDALE, ARIZONA

| | |
|-------------------|--------|
| REVISIONS: | |
| REV. | |
| REV. | |
| REV. | |
| DESIGN BY: N/A | |
| DRAWN BY: CZ | |
| SCALE: 1" = 30' | |
| DATE: 12/13/22 | |
| JOB No.: | 121323 |
| 2 of 2 | |

PLANT MATERIALS LEGEND
Sym. Plant Name Size Qty Remarks

| Sym. | Plant Name | Size | Qty | Remarks |
|---------------|---|---|-----|---------|
| Trees | | | | |
| | Acacia aneura | 36" box | 19 | ADWR |
| | Mulga Acacia | 36 box, 7.0'-9.0" High, 4.0'-6.0" Wide, 1.5"-2.0" Caliper | | |
| | Acacia willardiana | 36" box | 6 | |
| | Palo Blanco | 36 box, 9.0'-11.0" High, 5.0'-7.0" Wide, 2.0-2.5 Caliper | | |
| | Caesalpinia cacalaco 'Smoothie' | 36" box | 6 | |
| | Thornless Cascalote | | | |
| | Chilopsis linearis 'Bubba' | 36" box | 12 | |
| | Bubba Desert Willow | | | |
| | Ebanopsis ebano | 54" box | 18 | |
| | Texas Ebony | | | |
| | Olney tesota | 36" box | 4 | |
| | Ironwood | 36 box, 7.0'-8.0" High, 5.0'-6.0" Wide | | |
| | Parkinsonia praecox | 36" box | 9 | |
| | Palo Brea | 36 box, 8.0'-9.0" High, 6.0'-7.0" Wide, 1.75-2.25 Caliper | | |
| | Prosopis glandulosa 'Maverick' | 36" box | 5 | |
| | Thornless Texas Honey Mesquite | | | |
| | Prosopis X Phoenix | 36" box | 16 | |
| | Thornless Mesquite | | | |
| | Vitex agnus-castus | 36" box | 10 | |
| | Chaste Tree | 36 box, 7.0'-8.0" High, 5.0'-7.0" Wide | | |
| Shrubs | | | | |
| | Ambrosia deltoidea | 1 gal. | 78 | |
| | Triangle Leaf Bursage | | | |
| | Asparagus densiflorus 'Myers' | 5 gal. | 19 | |
| | Foxtail Fern | | | |
| | Buxus microphylla japonica | 5 gal. | 32 | |
| | Boxwood | | | |
| | Caesalpinia mexicana | 5 gal. | 4 | |
| | Mexican Bird of Paradise | | | |
| | Calliandra californica | 5 gal. | 2 | |
| | Red Fairy Duster | | | |
| | Calliandra eriophylla | 5 gal. | 11 | |
| | Pink Fairy Duster | | | |
| | Calliandra eriophylla 'Maricopa Red' | 5 gal. | 17 | |
| | Prostrate Fairy Duster | | | |
| | Calliandra 'Sierra Star' | 5 gal. | 5 | |
| | Sierra Star | | | |
| | Convolvulus cneorum | 1 gal. | 60 | |
| | Bush Morning Glory | | | |
| | Cuphea ilavea | 5 gal. | 6 | |
| | Bat Faced Cuphea | | | |
| | Dalea capitata | 1 gal. | 116 | |
| | Golden Dalea | | | |
| | Dalea capitata 'Sierra Gold' | 5 gal. | 74 | |
| | Sierra Gold Dalea | | | |
| | Dalea frutescens | 5 gal. | 33 | |
| | Black Dalea | | | |
| | Dalea pulchra | 5 gal. | 7 | |
| | Indigo Bush | | | |
| | Dodonaea viscosa | 5 gal. | 10 | |
| | Hop Bush | | | |
| | Encelia farinosa | 5 gal. | 19 | |
| | Brittlebush | | | |
| | Eremophila maculata 'Valentine' | 5 gal. | 6 | |
| | Valentine Shrub | | | |
| | Justicia californica | 5 gal. | 9 | |
| | Chuparosa | | | |
| | Larrea tridentata | 5 gal. | 9 | |
| | Creosote | | | |
| | Lantana camara 'Carnival' | 1 gal. | 47 | |
| | Carnival Lantana | | | |
| | Lantana camara 'Dallas Red' | 5 gal. | 45 | |
| | Dallas Red Lantana | | | |
| | Leucophyllum frutescens 'Compacta' | 5 gal. | 58 | |
| | Compact Texas Sage | | | |
| | Leucophyllum laevigatum | 5 gal. | 37 | |
| | Chihuahuan Sage | | | |
| | Leucophyllum langmaniae 'Lynn's Legacy' | 12 | | |
| | Lynn's Legacy Sage | 5 gal. | | |
| | Leucophyllum zygophyllum 'Cimarron' | 5 gal. | 66 | |
| | Cimarron Sage | | | |
| | Muhlenbergia lindheimeri 'Autumn Glow' | 7 | | |
| | Autumn Glow TM | 5 gal. | | |
| | Myrtus communis 'Compacta' | 5 gal. | 92 | |
| | Compact Myrtle | | | |
| | Nandina domestica 'Nana' | 15 gal. | 20 | |
| | Dwarf Heavenly Bamboo | | | |
| | Penstemon ambiguus | 1 gal. | 12 | |
| | Sand Penstemon | | | |
| | Penstemon eatonii | 1 gal. | 55 | |
| | Firecracker Penstemon | | | |

PLANT MATERIALS LEGEND
Sym. Plant Name Size Qty Remarks

| | | | | |
|---------------------|---|-----------|-----|---------------|
| Shrubs | | | | |
| | Penstemon pseudospectabilis | 1 gal. | 10 | |
| | Purple Penstemon | | | |
| | Rhipirolepis indica 'Pinkie' | 5 gal. | 12 | |
| | Pinkie Indian Hawthorne | | | |
| | Rhipirolepis indica 'Clara' | 5 gal. | 1 | |
| | Clara Indian Hawthorne | | | |
| | Ruellia brittoniana | 5 gal. | 10 | Purple Flower |
| | Ruellia | | | |
| | Ruellia brittoniana 'Blanca' | 5 gal. | 44 | |
| | White Dwarf Ruellia | | | |
| | Ruellia peninsularis | 5 gal. | 157 | |
| | Desert Ruellia | | | |
| | Russelia equisetiformis | 15 gal. | 26 | |
| | Coral Fountain | | | |
| | Salvia chamaedryoides | 15 gal. | 97 | |
| | Blue Chihuahuan Sage | | | |
| | Salvia clelandii | 5 gal. | 3 | |
| | Chaparral Sage | | | |
| | Salvia greggii | 5 gal. | 50 | |
| | Autumn Sage | | | |
| | Salvia greggii 'Texas Wedding' | 5 gal. | 24 | |
| | White Texas Sage | | | |
| | Simmondsia chinensis | 5 gal. | 21 | |
| | Jojoba | | | |
| | Tecoma stans | 5 gal. | 1 | |
| | Yellow Bells | | | |
| | Vaquelinia californica | 5 gal. | 98 | |
| | Arizona Rosewood | | | |
| Groundcovers | | | | |
| | Baileya multiradiata | 1 gal. | 203 | |
| | Desert Marigold | | | |
| | Convolvulus sabatius | 1 gal. | 9 | |
| | Ground Morning Glory | | | |
| | Dalea greggii | 5 gal. | 55 | |
| | Trailing Indigo Bush | | | |
| | Dyssodia pentachaeta | 5 gal. | 87 | |
| | Golden Dyssodia | | | |
| | Gaura lindheimeri | 5 gal. | 38 | |
| | Pink Gaura | | | |
| | Glandularia goodingii | 1 gal. | 69 | |
| | Gooding Verbena | | | |
| | Glandularia rigida | 5 gal. | 110 | |
| | Sandpaper Verbena | | | |
| | Lantana montevidensis | 1 gal. | 15 | |
| | Purple Trailing Lantana | | | |
| | Lantana montevidensis 'White' | 1 gal. | 109 | |
| | White Lantana | | | |
| | Lantana 'New Gold' | 1 gal. | 153 | |
| | New Gold Lantana | | | |
| | Lantana montevidensis 'Yellow Trailing' | 1 gal. | 83 | |
| | Yellow Trailing Lantana | | | |
| | Melampodium leucanthum | 1 gal. | 41 | |
| | Blackfoot Daisy | | | |
| | Oenothera berlandieri | 1 gal. | 36 | |
| | Mexican Evening Primrose | | | |
| | Oenothera caespitosa | 1 gal. | 11 | |
| | Tufted Evening Primrose | | | |
| | Ruellia brittoniana 'Katie' | 5 gal. | 22 | |
| | Katie Ruellia | | | |
| | Teucrium chamaedrys | 1 gal. | 47 | |
| | Germander | | | |
| Cacti | | | | |
| | Agave x 'Blue Glow' | 5 gal. | 19 | |
| | Blue Glow Agave | | | |
| | Agave bovicornuta | 5 gal. | 50 | |
| | Cow Horn Agave | | | |
| | Agave palmeri | 5 gal. | 6 | |
| | Palmer's Agave | | | |
| | Agave parryi | 5 gal. | 34 | |
| | Parry's Agave | | | |
| | Agave tequiliana | 5 gal. | 23 | |
| | Weber Blue Agave | | | |
| | Aloe barbadensis | 5 gal. | 42 | |
| | Medicinal Aloe | | | |
| | Aloe x 'Blue Elf' | 5 gal. | 80 | |
| | Blue Elf Aloe | | | |
| | Carnegiea gigantea | 8' min. | 11 | |
| | Saguaro | | | |
| | Dasylistron wheeleri | 5 gal. | 5 | |
| | Desert Spoon | | | |
| | Ferocactus acanthodes | bare root | 17 | |
| | Compass Barrel | | | |
| | Ferocactus gracilis | bare root | 24 | |
| | Fire Barrel Cactus | | | |
| | Fouquieria splendens | bare root | 10 | |
| | Ocotillo | | | |
| | Hesperaloe parviflora-red | 5 gal. | 81 | |
| | Red Hesperaloe | | | |
| | Opuntia violacea santa-rita | 5 gal. | 19 | |
| | Purple Prickly Pear | | | |
| | Pedilanthus macrocarpus | 5 gal. | 3 | |
| | Lady's Slipper | | | |
| | Yucca baccata | 5 gal. | 4 | |
| | Banana Yucca | | | |
| Vines | | | | |
| | Antigonon leptopus | 5 gal. | 5 | |
| | Queen's Wreath | | | |

MASS PLANTING

| | ARTIFICIAL TURF - 1,763 SQ. FT., PIONEER BUILDING MATERIALS 'AUGUSTA'. |
|------|---|
| Sym. | Description |
| | 3/4" SCREENED DECOMPOSED GRANITE, ROCK PROS USA 'MAHOGANY', 2" THICK MINIMUM. |

NOTES:

- 1. THE CONTRACTOR SHALL INSTALL NDS ROOT BARRIER PANELS AVAILABLE IN 20' ROLLS (OR APPROVED EQUAL) AT ALL TREES WITHIN 7'-0" FEET OF HARDSCAPE ELEMENTS INCLUDING (BUT NOT LIMITED TO) SIDEWALKS, ASPHALT, CONCRETE SLABS / FOOTINGS AND STRUCTURES. INSTALL PER ROOT BARRIER DETAIL. CONTRACTOR SHALL SUBMIT SPECIFICATION SHEETS OF PROPOSED ROOT BARRIER PANELS TO THE LANDSCAPE ARCHITECT FOR APPROVAL PRIOR TO INSTALLATION.
- 2. CONTRACTOR IS RESPONSIBLE FOR ALL SHIPPING / DELIVERY COSTS ASSOCIATED TO HAVE PLANT MATERIAL SHIPPED TO THE SITE FOR ANY OUT OF STATE MATERIALS. THIS INCLUDES, BUT IS NOT LIMITED TO, SATISFYING ALL DEPT. OF AGRICULTURE REQUIREMENTS ASSOCIATED WITH OBTAINING APPROVAL.
- 3. LANDSCAPE ARCHITECT TO APPROVE FINAL GRADING. PLANTING SHALL NOT OCCUR UNTIL FINAL GRADING IS APPROVED.
- 4. LOCATIONS OF PLANTS SHOWN ON DRAWING ARE APPROXIMATE. LANDSCAPE ARCHITECT TO FIELD APPROVE ALL FINAL LOCATIONS PRIOR TO INSTALLATION. LANDSCAPE CONTRACTOR HAS OPTION TO FLAG LOCATIONS OR PLACE CONTAINER MATERIAL.
- 5. DUE TO SEASONAL AND OR UNFORESEEN CONSTRAINTS SOME PLANT MATERIAL WILL POSSIBLY NOT BE AVAILABLE AT TIME OF INSTALLATION. LANDSCAPE CONTRACTOR TO SUBMIT LIST OF ANY NON-AVAILABLE MATERIAL TO LANDSCAPE ARCHITECT FOR REPLACEMENTS TO BE SELECTED.
- 6. ALL PLANT MATERIAL IS TO BE RETAIL QUALITY.
- 7. LANDSCAPE CONTRACTOR TO PROVIDE PICTURES OR SAMPLES OF ALL PLANT MATERIAL PRIOR TO INSTALLATION FOR APPROVAL.
- 8. ALL PLANT MATERIAL SOURCED FROM OUTSIDE OF ARIZONA TO BE PROPERLY ACCLIMATED TO ARIZONA CLIMATE DEPENDING ON TIME OF YEAR OF INSTALLATION. METHODS: SUN-SCREEN CLOTH/FABRIC TO BE INSTALLED ABOVE PLANT MATERIAL.
- 9. ALL CACTI OR ACCENT MATERIAL WITH SHARP THORNS TO BE PLANTED A MINIMUM OF 3'-0" CLEAR FROM SIDEWALKS
- 10. LANDSCAPE ARCHITECT RESERVES THE RIGHT TO REFUSE OR SEND BACK ANY PLANT MATERIAL THAT DOES NOT MEET QUALITY STANDARDS.

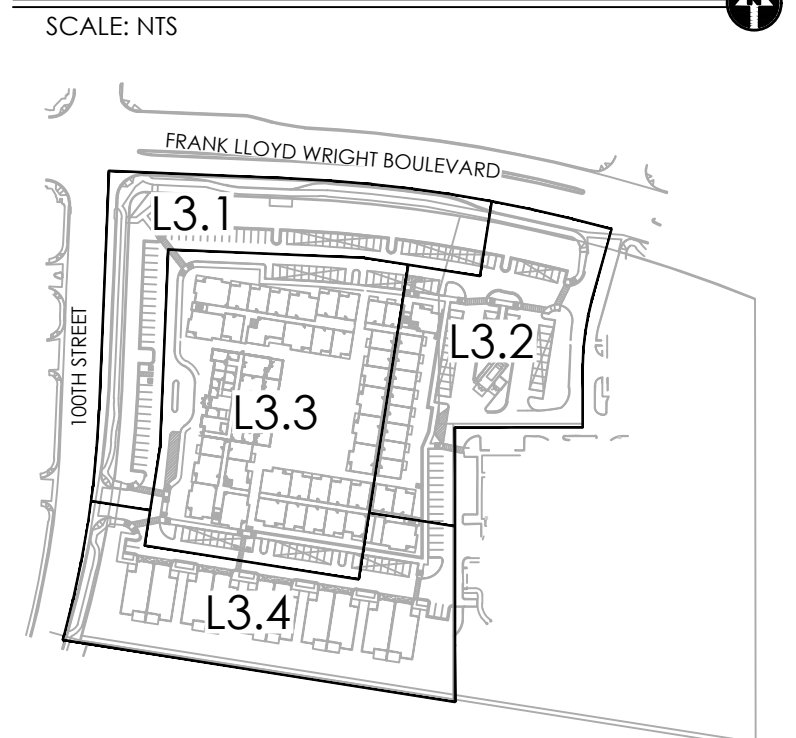
GREY PICKETT
landscape architecture | community design
7051 W. 5th Avenue, Suite 310
Scottsdale, Arizona 85262
480.609.0000px | 480.609.0066st



NOT FOR CONSTRUCTION

Headwaters Scottsdale Scottsdale, Arizona

KEY MAP



revisions:

project #: HWG001 | scale: None
issued for:

drawn by: TEAM | date: 04/03/2023

drawing: Plant Legend

L3.0

of

Copyright © 2023 by 16-ZN-2023
4/5/2023



NOT FOR CONST.

**Headwaters Scottsdale
Scottsdale, Arizona**

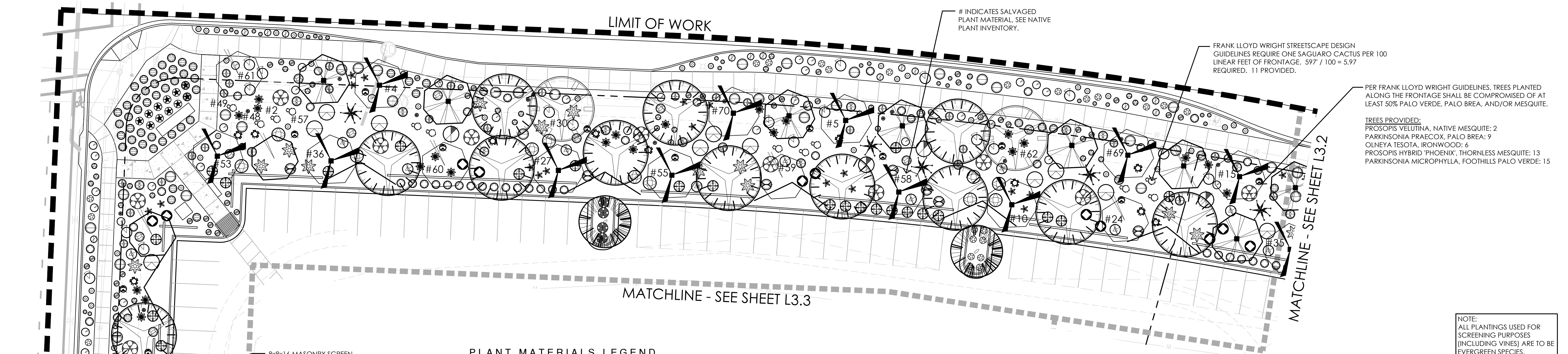
revisions:
▲▲▲▲▲

project #:
HWG001

scale:
1" = 20'-0"
issued for:

date:
04/03/2023

drawing:
Planting Plan
L3.1
of



LIMIT OF WORK

MATCHLINE - SEE SHEET L3.4

PLANT MATERIALS LEGEND

| Sym. | Plant Name | Size | Qty | Remarks |
|---------------------|--|---|-----|---------------|
| Trees | | | | |
| | Acacia aneura Mulga Acacia | 36" box 36 box, 7.0-9.0' High, 4.0'-6.0' Wide, 1.5-2.0 Caliper | 19 | ADWR |
| | Acacia willardiana Palo Blanco | 36" box 36 box, 9.0-11.0' High, 5.0'-7.0' Wide, 2.0-2.5 Caliper | 6 | |
| | Caesalpinia cacalaco 'Smoothie' Thornless Cascalote | 36" box | 6 | |
| | Chilopsis linearis 'Bubba' Bubba Desert Willow | 36" box | 12 | |
| | Ebanopsis ebano Texas Ebony | 54" box | 18 | |
| | Olneya tesota Ironwood | 36" box 36 box, 7.0-9.0' High, 5.0'-6.0' Wide | 4 | |
| | Parkinsonia praecox Palo Brea | 36" box 36 box, 8.0-9.0' High, 6.0'-7.0' Wide, 1.75-2.25 Caliper | 9 | |
| | Prosopis glandulosa 'Maverick' Thornless Texas Honey Mesquite | 36" box | 5 | |
| | Prosopis X Phoenix Thornless Mesquite | 36" box | 16 | |
| | Vitex agnus-castus Chaste Tree | 36" box 36 box, 7.0-9.0' High, 5.0'-7.0' Wide | 10 | |
| Shrubs | | | | |
| | Ambrosia deltoidea Triangle Leaf Bursage | 1 gal. | 78 | |
| | Asparagus densiflorus 'Myers' Foxtail Fern | 5 gal. | 19 | |
| | Buxus microphylla japonica Boxwood | 5 gal. | 32 | |
| | Caesalpinia mexicana Mexican Bird of Paradise | 5 gal. | 4 | |
| | Calliandra californica Red Fairy Duster | 5 gal. | 2 | |
| | Calliandra eriophylla Pink Fairy Duster | 5 gal. | 11 | |
| | Calliandra eriophylla 'Maricopa Red' Prostrate Fairy Duster | 5 gal. | 17 | |
| | Calliandra 'Sierra Star' Sierra Star | 5 gal. | 5 | |
| | Convolvulus encornum Bush Morning Glory | 1 gal. | 60 | |
| | Cuphea ilavea Bat Faced Cuphea | 5 gal. | 6 | |
| | Dalea capitata Golden Dalea | 1 gal. | 116 | |
| | Dalea capitata 'Sierra Gold' Sierra Gold Dalea | 5 gal. | 74 | |
| | Dalea frutescens Black Dalea | 5 gal. | 33 | |
| | Dalea pulchra Indigo Bush | 5 gal. | 7 | |
| Shrubs | | | | |
| | Dodonaea viscosa Hop Bush | 5 gal. | 10 | |
| | Encelia farinosa Brittlebush | 5 gal. | 19 | |
| | Eremophila maculata 'Valentine' Valentine Shrub | 5 gal. | 6 | |
| | Justicia californica Chuparosa | 5 gal. | 9 | |
| | Larrea tridentata Creosote | 5 gal. | 9 | |
| | Lantana camara 'Carnival' Carnival Lantana | 1 gal. | 47 | |
| | Lantana camara 'Dallas Red' Dallas Red Lantana | 5 gal. | 45 | |
| | Leucophyllum frutescens 'Compacta' Compact Texas Sage | 5 gal. | 58 | |
| | Leucophyllum laevigatum Chihuahuan Sage | 5 gal. | 37 | |
| | Leucophyllum langmaniae 'Lynn's Legacy' Lynn's Legacy Sage | 5 gal. | 12 | |
| | Leucophyllum zygophyllum 'Cimarron' Cimarron Sage | 5 gal. | 66 | |
| | Muhlenbergia lindheimeri 'Autumn Glow' Autumn Glow TM | 5 gal. | 7 | |
| | Myrtus communis 'Compacta' Compact Myrtle | 5 gal. | 92 | |
| | Nandina domestica 'Nana' Dwarf Heavenly Bamboo | 15 gal. | 20 | |
| | Penstemon ambiguus Sand Penstemon | 1 gal. | 12 | |
| | Penstemon eatonii Firecracker Penstemon | 1 gal. | 55 | |
| | Penstemon pseudospectabilis Purple Penstemon | 1 gal. | 10 | |
| | Raphiolepis indica 'Pinkie' Pinkie Indian Hawthorne | 5 gal. | 12 | |
| | Raphiolepis indica 'Clara' Clara Indian Hawthorne | 5 gal. | 1 | |
| | Ruellia brittoniana Ruellia | 5 gal. | 10 | Purple Flower |
| | Ruellia brittoniana 'Blanca' White Dwarf Ruellia | 5 gal. | 44 | |
| | Ruellia peninsularis Desert Ruellia | 5 gal. | 157 | |
| | Russelia equisetiformis Coral Fountain | 15 gal. | 26 | |
| | Salvia chamaedryoides Blue Chihuahuan Sage | 15 gal. | 97 | |
| | Salvia clevelandii Chaparral Sage | 5 gal. | 3 | |
| | Salvia greggii Autumn Sage | 5 gal. | 50 | |
| | Salvia greggii 'Texas Wedding' White Texas Sage | 5 gal. | 24 | |
| | Simmondsia chinensis Jojoba | 5 gal. | 21 | |
| | Tecoma stans Yellow Belts | 5 gal. | 1 | |
| | Vaquelinia californica Arizona Rosewood | 5 gal. | 98 | |
| Groundcovers | | | | |
| | Baileya multiradiata Desert Marigold | 1 gal. | 203 | |
| | Convolvulus sabatius Ground Morning Glory | 1 gal. | 9 | |
| | Dalea greggii Trailing Indigo Bush | 5 gal. | 55 | |
| | Dyssodia pentachaeta Golden Dyssodia | 5 gal. | 87 | |
| | Gaura lindheimeri Pink Gaura | 5 gal. | 38 | |
| | Glandularia gooddingii Goodding Verbena | 1 gal. | 69 | |
| | Glandularia rigida Sandpaper Verbena | 5 gal. | 110 | |
| | Lantana montevidensis Purple Trailing Lantana | 1 gal. | 15 | |
| | Lantana montevidensis 'White' White Lantana | 1 gal. | 109 | |
| | Lantana 'New Gold' New Gold Lantana | 1 gal. | 153 | |
| | Lantana montevidensis 'Yellow Trailing' Yellow Trailing Lantana | 1 gal. | 83 | |
| | Melampodium leucanthum Blackfoot Daisy | 1 gal. | 41 | |
| | Oenothera berlandieri Mexican Evening Primrose | 1 gal. | 36 | |
| | Oenothera caespitosa Tufted Evening Primrose | 1 gal. | 11 | |
| | Ruellia brittoniana 'Katie' Katie Ruellia | 5 gal. | 22 | |
| | Teucrium chamaedrys Germander | 1 gal. | 47 | |
| Cacti | | | | |
| | Agave x 'Blue Glow' Blue Glow Agave | 5 gal. | 19 | |
| | Agave bovicornuta Cow Horn Agave | 5 gal. | 50 | |
| | Agave palmeri Palmer's Agave | 5 gal. | 6 | |
| | Agave parryi Parry's Agave | 5 gal. | 34 | |
| | Agave tequiliana Weber Blue Agave | 5 gal. | 23 | |
| | Aloe barbadensis Medicinal Aloe | 5 gal. | 42 | |
| | Aloe x 'Blue Elf' Blue Elf Aloe | 5 gal. | 80 | |
| | Carnegia gigantea Saguaro | 8" min. | 11 | |
| | Dasylirion wheeleri Desert Spoon | 5 gal. | 5 | |
| | Ferocactus acanthodes Compass Barrel | bare root | 17 | |
| | Ferocactus gracilis Fire Barrel Cactus | bare root | 24 | |
| | Fouquieria splendens Ocotillo | bare root | 10 | |
| | Hesperaloe parviflora-red Red Hesperaloe | 5 gal. | 81 | |
| | Opuntia violacea santa-rita Purple Prickly Pear | 5 gal. | 19 | |
| | Pedilanthus macrocarpus Lady's Slipper | 5 gal. | 3 | |
| | Yucca baccata Banana Yucca | 5 gal. | 4 | |
| Vines | | | | |
| | Antigonon leptopus Queen's Wreath | 5 gal. | 5 | |

NOTE:
ALL PLANTINGS USED FOR SCREENING PURPOSES (INCLUDING VINES) ARE TO BE EVERGREEN SPECIES.

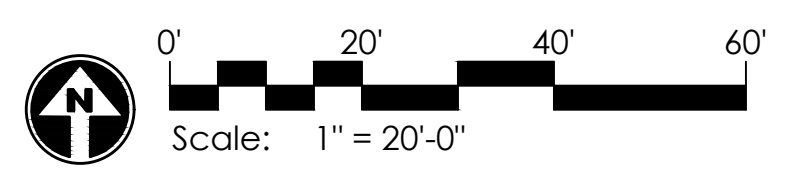
MASS PLANTING

| Sym. | Description |
|------|---|
| | ARTIFICIAL TURF - 1,763 SQ. FT., PIONEER BUILDING MATERIALS 'AUGUSTA' |
| | 3/4" SCREENED DECOMPOSED GRANITE, ROCK PROS USA 'MAHOGANY', 2" THICK MINIMUM. |

NOTES:

- THE CONTRACTOR SHALL INSTALL NDS ROOT BARRIER PANELS AVAILABLE IN 20' ROLLS (OR APPROVED EQUAL) AT ALL TREES WITHIN 7'-0" FEET OF HARDSCAPE ELEMENTS INCLUDING (BUT NOT LIMITED TO) SIDEWALKS, ASPHALT, CONCRETE SLABS / FOOTINGS AND STRUCTURES. INSTALL PER ROOT BARRIER DETAIL. CONTRACTOR SHALL SUBMIT SPECIFICATION SHEETS OF PROPOSED ROOT BARRIER PANELS TO THE LANDSCAPE ARCHITECT PRIOR TO INSTALLATION.
- CONTRACTOR IS RESPONSIBLE FOR ALL SHIPPING / DELIVERY COSTS ASSOCIATED TO HAVE PLANT MATERIAL SHIPPED TO THE SITE FOR ANY OUT OF STATE MATERIALS. THIS INCLUDES, BUT IS NOT LIMITED TO, SATISFYING ALL DEPT. OF AGRICULTURE REQUIREMENTS ASSOCIATED WITH OBTAINING APPROVAL.
- LANDSCAPE ARCHITECT TO APPROVE FINAL GRADING. PLANTING SHALL NOT OCCUR UNTIL FINAL GRADING IS APPROVED.
- LOCATIONS OF PLANTS SHOWN ON DRAWING ARE APPROXIMATE. LANDSCAPE ARCHITECT TO FIELD APPROVE ALL FINAL LOCATIONS PRIOR TO INSTALLATION. LANDSCAPE CONTRACTOR HAS OPTION TO FLAG LOCATIONS OR PLACE CONTAINER MATERIAL.
- DUE TO SEASONAL AND OR UNFORESEEN CONSTRAINTS SOME PLANT MATERIAL WILL POSSIBLY NOT BE AVAILABLE AT TIME OF INSTALLATION. LANDSCAPE CONTRACTOR TO SUBMIT LIST OF ANY NON-AVAILABLE MATERIAL TO LANDSCAPE ARCHITECT FOR REPLACEMENTS TO BE SELECTED.
- ALL PLANT MATERIAL IS TO BE RETAIL QUALITY.
- LANDSCAPE CONTRACTOR TO PROVIDE PICTURES OR SAMPLES OF ALL PLANT MATERIAL PRIOR TO INSTALLATION FOR APPROVAL.
- ALL PLANT MATERIAL SOURCED FROM OUTSIDE OF ARIZONA TO BE PROPERLY ACCLIMATED TO ARIZONA CLIMATE DEPENDING ON TIME OF YEAR OF INSTALLATION. METHODS: SUN-SCREEN CLOTH/FABRIC TO BE INSTALLED ABOVE PLANT MATERIAL.
- ALL CACTI OR ACCENT MATERIAL WITH SHARP THORNS TO BE PLANTED A MINIMUM OF 3'-0" CLEAR FROM SIDEWALKS.
- LANDSCAPE ARCHITECT RESERVES THE RIGHT TO REFUSE OR SEND BACK ANY PLANT MATERIAL THAT DOES NOT MEET QUALITY STANDARDS.

KEY MAP
SCALE: NTS



LIMIT OF WORK

MATCHLINE - SEE SHEET L3.3

MATCHLINE - SEE SHEET L3.4

LIMIT OF WORK

MATCHLINE - SEE SHEET L3.3

MATCHLINE - SEE SHEET L3.2

FRANK LLOYD WRIGHT STREETScape DESIGN
GUIDELINES REQUIRE ONE SAGUARO CACTUS PER 100
LINEAR FEET OF FRONTAGE. 597 / 100 = 5.97
REQUIRED. 11 PROVIDED.

PER FRANK LLOYD WRIGHT GUIDELINES, TREES PLANTED
ALONG THE FRONTAGE SHALL BE COMPROMISED OF AT
LEAST 50% PALO VERDE, PALO BREA, AND/OR MESQUITE.

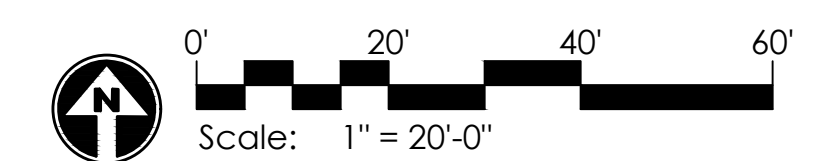
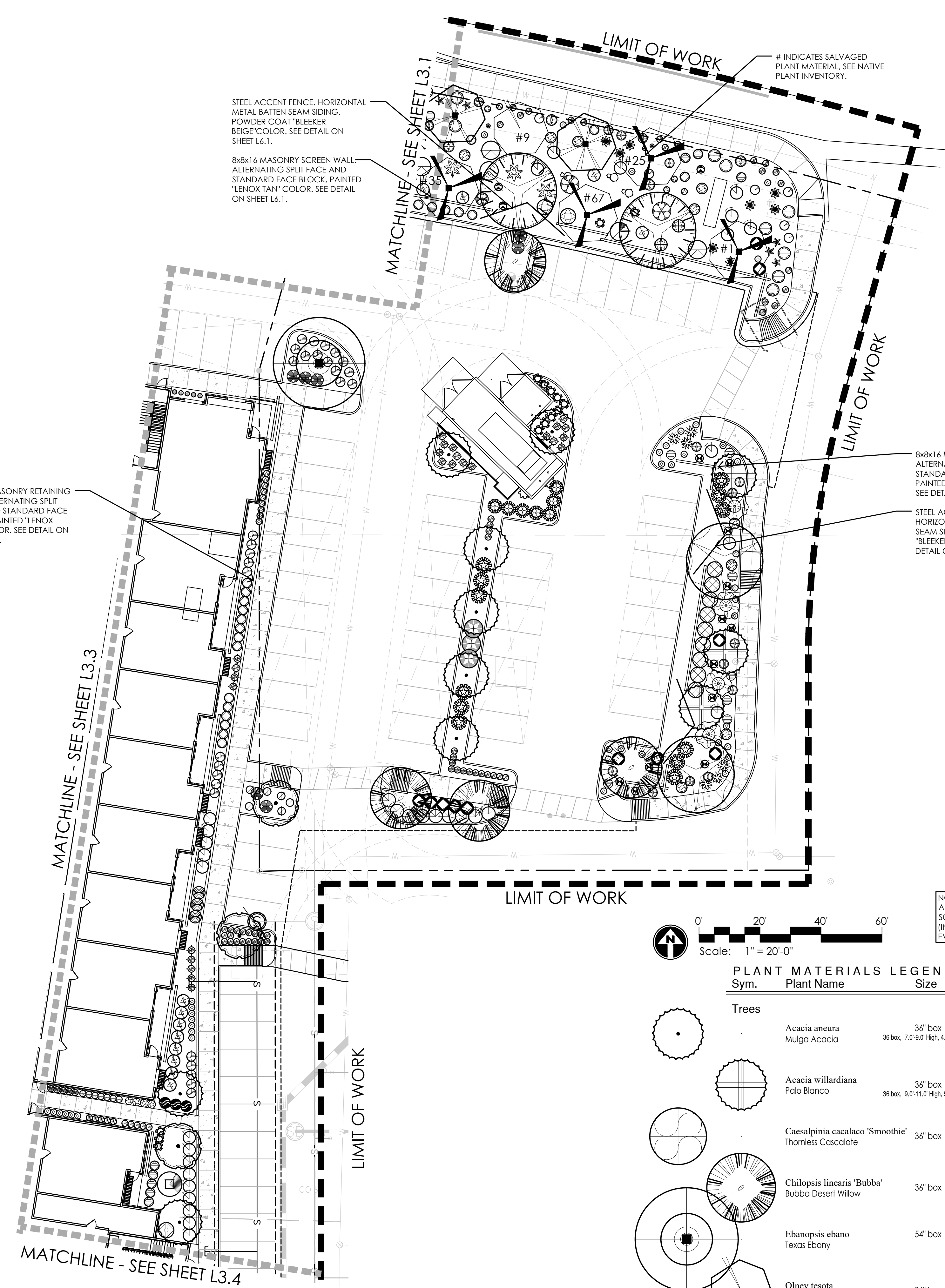
TREES PROVIDED:
PROSOPIS VELUTINA, NATIVE MESQUITE: 2
PARKINSONIA PRAECOX, PALO BREA: 9
OLNEYA TESOTA, IRONWOOD: 6
PROSOPIS HYBRID 'PHOENIX', THORNLSS MESQUITE: 13
PARKINSONIA MICROPHYLLA, FOOTHILLS PALO VERDE: 15

INDICATES SALVAGED
PLANT MATERIAL. SEE NATIVE
PLANT INVENTORY.

INDICATES SALVAGED
PLANT MATERIAL. SEE NATIVE
PLANT INVENTORY.

8x8x16 MASONRY SCREEN
WALL, ALTERNATING SPLIT
FACE AND STANDARD FACE
BLOCK, PAINTED 'LENOX TAN'
COLOR. SEE DETAIL ON SHEET
L6.1.

STEEL ACCENT FENCE,
HORIZONTAL METAL BATTEN
SEAM SIDING, POWDER COAT
'BLEEKER BEIGE' COLOR. SEE
DETAIL ON SHEET L6.1.



NOTE:
ALL PLANTINGS USED FOR
SCREENING PURPOSES
(INCLUDING VINES) ARE TO BE
EVERGREEN SPECIES.

PLANT MATERIALS LEGEND

| Sym. | Plant Name | Size | Qty | Remarks |
|--------------|--|--|-----|---------|
| Trees | | | | |
| | Acacia aneura Mulga Acacia | 36" box 36 box, 7.0'-9.0" High, 4.0'-6.0" Wide, 1.5-2.0 Caliper | 19 | ADWR |
| | Acacia willardiana Palo Blanco | 36" box 36 box, 9.0'-11.0" High, 5.0'-7.0" Wide, 2.0-2.5 Caliper | 6 | |
| | Caesalpinia cacalaco Thornless Cascalote | 36" box | 6 | |
| | Chilopsis linearis 'Bubba' Bubba Desert Willow | 36" box | 12 | |
| | Ebanopsis ebano Texas Ebony | 54" box | 18 | |
| | Olney tesota Ironwood | 36" box 36 box, 7.0'-8.0" High, 5.0'-6.0" Wide | 4 | |
| | Parkinsonia praecox Palo Brea | 36" box 36 box, 8.0'-9.0" High, 6.0'-7.0" Wide, 1.75-2.25 Caliper | 9 | |

PLANT MATERIALS LEGEND

| Plant Sym. | Plant Name | Size | Qty | Remarks |
|---------------|--|---|-----|---------------|
| Trees | | | | |
| | Prosopis glandulosa 'Maverick' Thornless Texas Honey Mesquite | 36" box | 5 | |
| | Prosopis X Phoenix Thornless Mesquite | 36" box | 16 | |
| | Vitex agnus-castus Chaste Tree | 36" box 36 box, 7.0'-9.0" High, 5.0'-7.0" Wide | 10 | |
| Shrubs | | | | |
| | Ambrosia deltoidea Triangle Leaf Bursage | 1 gal. | 78 | |
| | Asparagus densiflorus 'Myers' Foxtail Fern | 5 gal. | 19 | |
| | Buxus microphylla japonica Boxwood | 5 gal. | 32 | |
| | Caesalpinia mexicana Mexican Bird of Paradise | 5 gal. | 4 | |
| | Calliandra californica Red Fairy Duster | 5 gal. | 2 | |
| | Calliandra eriophylla Pink Fairy Duster | 5 gal. | 11 | |
| | Calliandra eriophylla 'Maricopa Red' Prostrate Fairy Duster | 5 gal. | 17 | |
| | Calliandra 'Sierra Star' Sierra Star | 5 gal. | 5 | |
| | Convolvulus cneorum Bush Morning Glory | 1 gal. | 60 | |
| | Cuphea ilavea Bat Faced Cuphea | 5 gal. | 6 | |
| | Dalea capitata Golden Dalea | 1 gal. | 116 | |
| | Dalea capitata 'Sierra Gold' Sierra Gold Dalea | 5 gal. | 74 | |
| | Dalea frutescens Black Dalea | 5 gal. | 33 | |
| | Dalea pulchra Indigo Bush | 5 gal. | 7 | |
| | Dodonaea viscosa Hop Bush | 5 gal. | 10 | |
| | Encelia farinosa Brittlebush | 5 gal. | 19 | |
| | Eremophila maculata 'Valentine' Valentine Shrub | 5 gal. | 6 | |
| | Justicia californica Chuparosa | 5 gal. | 9 | |
| | Larrea tridentata Creosote | 5 gal. | 9 | |
| | Lantana camara 'Carnival' Carnival Lantana | 1 gal. | 47 | |
| | Lantana camara 'Dallas Red' Dallas Red Lantana | 5 gal. | 45 | |
| | Leucophyllum frutescens 'Compacta' Compact Texas Sage | 5 gal. | 58 | |
| | Leucophyllum laevigatum Chihuahuan Sage | 5 gal. | 37 | |
| | Leucophyllum langmaniae 'Lynn's Legacy' Lynn's Legacy Sage | 5 gal. | 12 | |
| | Leucophyllum zygophyllum 'Cimarron' Cimarron Sage | 5 gal. | 66 | |
| | Muhlenbergia lindheimeri 'Autumn Glow' Autumn Glow TM | 5 gal. | 7 | |
| | Myrtus communis 'Compacta' Compact Myrtle | 5 gal. | 92 | |
| | Nandina domestica 'Nana' Dwarf Heavenly Bamboo | 15 gal. | 20 | |
| | Penstemon ambiguus Sand Penstemon | 1 gal. | 12 | |
| | Penstemon eatonii Firecracker Penstemon | 1 gal. | 55 | |
| | Penstemon pseudospectabilis Purple Penstemon | 1 gal. | 10 | |
| | Rhaphiolepis indica 'Pinkie' Pinkie Indian Hawthorne | 5 gal. | 12 | |
| | Rhaphiolepis indica 'Clara' Clara Indian Hawthorne | 5 gal. | 1 | |
| | Ruellia brittoniana Ruellia | 5 gal. | 10 | Purple Flower |
| | Ruellia brittoniana 'Blanca' White Dwarf Ruellia | 5 gal. | 44 | |
| | Ruellia peninsularis Desert Ruellia | 5 gal. | 157 | |
| | Russelia equisetiformis Coral Fountain | 15 gal. | 26 | |
| | Salvia chamaedryoides Blue Chihuahuan Sage | 15 gal. | 97 | |
| | Salvia clevelandii Chaparral Sage | 5 gal. | 3 | |
| | Salvia greggii Autumn Sage | 5 gal. | 50 | |
| | Salvia greggii 'Texas Wedding' White Texas Sage | 5 gal. | 24 | |
| | Simmondsia chinensis Jojoba | 5 gal. | 21 | |
| | Tecoma stans Yellow Bells | 5 gal. | 1 | |
| | Vaquerinia californica Arizona Rosewood | 5 gal. | 98 | |

PLANT MATERIALS LEGEND

| Plant Sym. | Plant Name | Size | Qty | Remarks |
|---------------------|--|-----------|-----|---------|
| Groundcovers | | | | |
| | Baileya multiradiata Desert Marigold | 1 gal. | 203 | |
| | Convolvulus sabatius Ground Morning Glory | 1 gal. | 9 | |
| | Dalea greggii Trailing Indigo Bush | 5 gal. | 55 | |
| | Dyssodia pentachaeta Golden Dyssodia | 5 gal. | 87 | |
| | Gaura lindheimeri Pink Gaura | 5 gal. | 38 | |
| | Glandularia goodingii Gooding Verbena | 1 gal. | 69 | |
| | Glandularia rigida Sandpaper Verbena | 5 gal. | 110 | |
| | Lantana montevidensis Purple Trailing Lantana | 1 gal. | 15 | |
| | Lantana montevidensis 'White' White Lantana | 1 gal. | 109 | |
| | Lantana 'New Gold' New Gold Lantana | 1 gal. | 153 | |
| | Lantana montevidensis 'Yellow Trailing' Yellow Trailing Lantana | 1 gal. | 83 | |
| | Melampodium leucanthum Blackfoot Daisy | 1 gal. | 41 | |
| | Oenothera berlandieri Mexican Evening Primrose | 1 gal. | 36 | |
| | Oenothera caespitosa Tufted Evening Primrose | 1 gal. | 11 | |
| | Ruellia brittoniana 'Katie' Katie Ruellia | 5 gal. | 22 | |
| | Teucrium chamaedrys Germander | 1 gal. | 47 | |
| Cacti | | | | |
| | Agave x 'Blue Glow' Blue Glow Agave | 5 gal. | 19 | |
| | Agave bovicornuta Cow Horn Agave | 5 gal. | 50 | |
| | Agave palmeri Palmer's Agave | 5 gal. | 6 | |
| | Agave parryi Parry's Agave | 5 gal. | 34 | |
| | Agave tequilana Weber Blue Agave | 5 gal. | 23 | |
| | Aloe barbadensis Medicinal Aloe | 5 gal. | 42 | |
| | Aloe x 'Blue Elf' Blue Elf Aloe | 5 gal. | 80 | |
| | Carnegiea gigantea Saguaro | 8 min. | 11 | |
| | Dasyliroton wheeleri Desert Spoon | 5 gal. | 5 | |
| | Ferocactus acanthodes Compass Barrel | bare root | 17 | |
| | Ferocactus gracilis Fire Barrel Cactus | bare root | 24 | |
| | Fouquieria splendens Ocotillo | bare root | 10 | |
| | Hesperaloe parviflora-red Red Hesperaloe | 5 gal. | 81 | |
| | Opuntia violacea santa-rita Purple Prickly Pear | 5 gal. | 19 | |
| | Pedilanthus macrocarpus Lady's Slipper | 5 gal. | 3 | |
| | Yucca baccata Banana Yucca | 5 gal. | 4 | |
| Vines | | | | |
| | Antigonon leptopus Queen's Wreath | 5 gal. | 5 | |

MASS PLANTING

| | |
|--|---|
| | ARTIFICIAL TURF - 1,763 SQ. FT., PIONEER BUILDING MATERIALS 'AUGUSTA'. |
| | 3/4" SCREENED DECOMPOSED GRANITE, ROCK PROS USA 'MAHOGANY', 2" THICK MINIMUM. |

| Sym. | Description |
|------|---------------|
| | Purple Flower |

KEY MAP
SCALE: NTS



GREY PICKETT
landscape architecture | community design
7051 N. 5th Avenue, Suite 210
Scottsdale, AZ 85251
480.609.0000p | 480.609.0068f



Headwaters Scottsdale
Scottsdale, Arizona

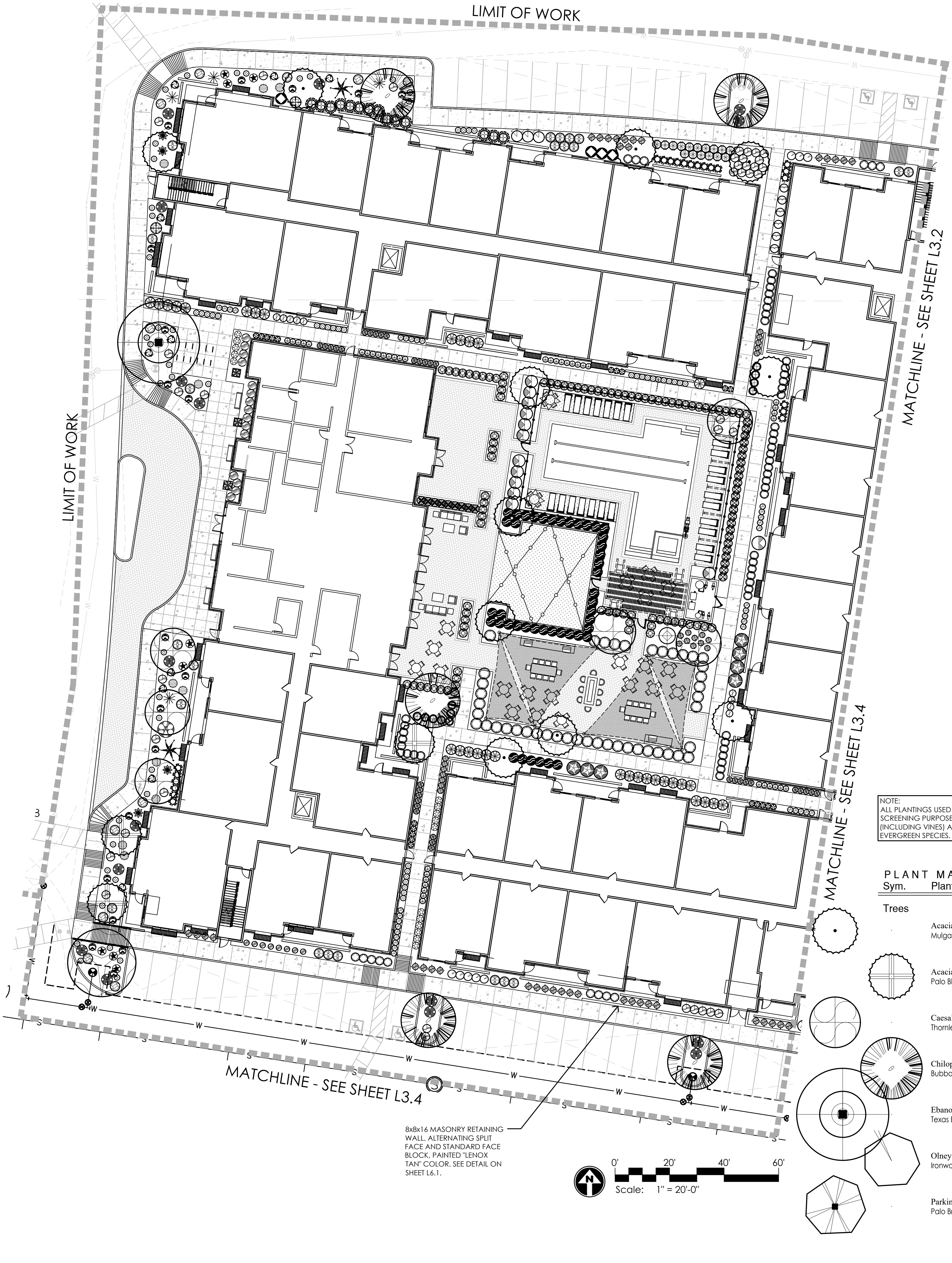
project #: HWG001
scale: 1" = 20'-0"
issued for:

drawn by: TEAM
date: 04/03/2023

drawing: Planting Plan

L3.2
of

LIMIT OF WORK



NOTE:
ALL PLANTINGS USED FOR
SCREENING PURPOSES
(INCLUDING VINES) ARE TO BE
EVERGREEN SPECIES.

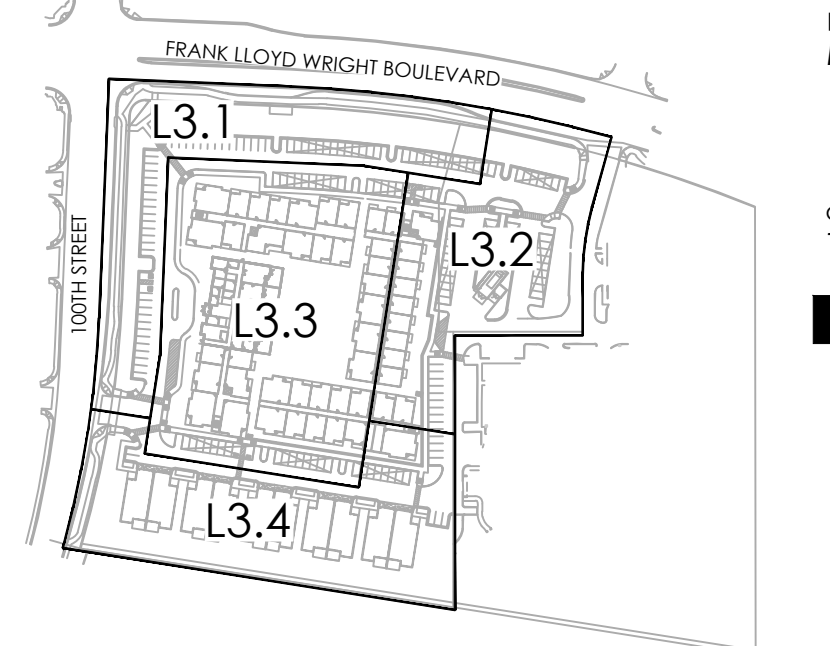
PLANT MATERIALS LEGEND

| Sym. | Plant Name | Size | Qty | Remarks |
|--------------|--|--|-----|---------|
| Trees | | | | |
| | Acacia aneura Mulga Acacia | 36" box 36 box, 7.0'-9.0" High, 4.0'-6.0" Wide, 1.5-2.0 Caliper | 19 | ADWR |
| | Acacia willardiana Palo Blanco | 36" box 36 box, 9.0'-11.0" High, 5.0'-7.0" Wide, 2.0-2.5 Caliper | 6 | |
| | Caesalpinia cacalaco 'Smoothie' Thornless Cascalote | 36" box | 6 | |
| | Chilopsis linearis 'Bubba' Bubba Desert Willow | 36" box | 12 | |
| | Ebanopsis ebano Texas Ebony | 54" box | 18 | |
| | Olney tesota Ironwood | 36" box 36 box, 8.0'-9.0" High, 5.0'-6.0" Wide | 4 | |
| | Parkinsonia praecox Palo Brea | 36" box 36 box, 8.0'-9.0" High, 6.0'-7.0" Wide, 1.75-2.25 Caliper | 9 | |

| PLANT Sym. | MATERIALS Plant Name | LEGEND Size | Qty | Remarks |
|---------------|--|---|-----|---------------|
| | Prosopis glandulosa 'Maverick' Thornless Texas Honey Mesquite | 36" box | 5 | |
| | Prosopis X Phoenix Thornless Mesquite | 36" box | 16 | |
| | Vitex agnus-castus Chaste Tree | 36" box 36 box, 7.0'-9.0" High, 5.0'-7.0" Wide | 10 | |
| Shrubs | | | | |
| | Ambrosia deltoidea Triangle Leaf Bursage | 1 gal. | 78 | |
| | Asparagus densiflorus 'Myers' Foxtail Fern | 5 gal. | 19 | |
| | Buxus microphylla japonica Boxwood | 5 gal. | 32 | |
| | Caesalpinia mexicana Mexican Bird of Paradise | 5 gal. | 4 | |
| | Calliandra californica Red Fairy Duster | 5 gal. | 2 | |
| | Calliandra eriophylla Pink Fairy Duster | 5 gal. | 11 | |
| | Calliandra eriophylla 'Maricopa Red' Prostrate Fairy Duster | 5 gal. | 17 | |
| | Calliandra 'Sierra Star' Sierra Star | 5 gal. | 5 | |
| | Convolvulus cneorum Bush Morning Glory | 1 gal. | 60 | |
| | Cuphea ilavea Bat Faced Cuphea | 5 gal. | 6 | |
| | Dalea capitata Golden Dalea | 1 gal. | 116 | |
| | Dalea capitata 'Sierra Gold' Sierra Gold Dalea | 5 gal. | 74 | |
| | Dalea frutescens Black Dalea | 5 gal. | 33 | |
| | Dalea pulchra Indigo Bush | 5 gal. | 7 | |
| | Dodonaea viscosa Hop Bush | 5 gal. | 10 | |
| | Encelia farinosa Brittlebush | 5 gal. | 19 | |
| | Eremophila maculata 'Valentine' Valentine Shrub | 5 gal. | 6 | |
| | Justicia californica Chuparosa | 5 gal. | 9 | |
| | Larrea tridentata Creosote | 5 gal. | 9 | |
| | Lantana camara 'Carnival' Carnival Lantana | 1 gal. | 47 | |
| | Lantana camara 'Dallas Red' Dallas Red Lantana | 5 gal. | 45 | |
| | Leucophyllum frutescens 'Compacta' Compact Texas Sage | 5 gal. | 58 | |
| | Leucophyllum laevigatum Chihuahuan Sage | 5 gal. | 37 | |
| | Leucophyllum langmanianae 'Lynn's Legacy' Lynn's Legacy Sage | 5 gal. | 12 | |
| | Leucophyllum zygophyllum 'Cimarron' Cimarron Sage | 5 gal. | 66 | |
| | Muhlenbergia lindheimeri 'Autumn Glow' Autumn Glow TM | 5 gal. | 7 | |
| | Myrtus communis 'Compacta' Compact Myrtle | 5 gal. | 92 | |
| | Nandina domestica 'Nana' Dwarf Heavenly Bamboo | 15 gal. | 20 | |
| | Penstemon ambiguus Sand Penstemon | 1 gal. | 12 | |
| | Penstemon catonii Firecracker Penstemon | 1 gal. | 55 | |
| | Penstemon pseudospectabilis Purple Penstemon | 1 gal. | 10 | |
| | Rhaphiolepis indica 'Pinkie' Pinkie Indian Hawthorne | 5 gal. | 12 | |
| | Rhaphiolepis indica 'Clara' Clara Indian Hawthorne | 5 gal. | 1 | |
| | Ruellia brittoniana Ruellia | 5 gal. | 10 | Purple Flower |
| | Ruellia brittoniana 'Blanca' White Dwarf Ruellia | 5 gal. | 44 | |
| | Ruellia peninsularis Desert Ruellia | 5 gal. | 157 | |
| | Russelia equisetiformis Coral Fountain | 15 gal. | 26 | |
| | Salvia chamaedryoides Blue Chihuahuan Sage | 15 gal. | 97 | |
| | Salvia clevelandii Chaparral Sage | 5 gal. | 3 | |
| | Salvia greggii Autumn Sage | 5 gal. | 50 | |
| | Salvia greggii 'Texas Wedding' White Texas Sage | 5 gal. | 24 | |
| | Simmondsia chinensis Jojoba | 5 gal. | 21 | |
| | Tecoma stans Yellow Bells | 5 gal. | 1 | |
| | Vaquerinia californica Arizona Rosewood | 5 gal. | 98 | |

| PLANT Sym. | MATERIALS Plant Name | LEGEND Size | Qty | Remarks |
|----------------------|---|-------------|-----|---------|
| Groundcovers | | | | |
| | Baileya multiradiata Desert Marigold | 1 gal. | 203 | |
| | Convolvulus sabatius Ground Morning Glory | 1 gal. | 9 | |
| | Dalea greggii Trailing Indigo Bush | 5 gal. | 55 | |
| | Dyssodia pentachaeta Golden Dysodia | 5 gal. | 87 | |
| | Gaura lindheimeri Pink Gaura | 5 gal. | 38 | |
| | Glandularia goodingii Gooding Verbena | 1 gal. | 69 | |
| | Glandularia rigida Sandpaper Verbena | 5 gal. | 110 | |
| | Lantana montevicensis Purple Trailing Lantana | 1 gal. | 15 | |
| | Lantana montevicensis 'White' White Lantana | 1 gal. | 109 | |
| | Lantana 'New Gold' New Gold Lantana | 1 gal. | 153 | |
| | Lantana montevicensis 'Yellow Trailing' Yellow Trailing Lantana | 1 gal. | 83 | |
| | Melampodium leucanthum Blackfoot Daisy | 1 gal. | 41 | |
| | Oenothera berlandieri Mexican Evening Primrose | 1 gal. | 36 | |
| | Oenothera caespitosa Tufted Evening Primrose | 1 gal. | 11 | |
| | Ruellia brittoniana 'Katie' Katie Ruellia | 5 gal. | 22 | |
| | Teucrium chamaedrys Germander | 1 gal. | 47 | |
| Cacti | | | | |
| | Agave x 'Blue Glow' Blue Glow Agave | 5 gal. | 19 | |
| | Agave bovicornuta Cow Horn Agave | 5 gal. | 50 | |
| | Agave palmeri Palmer's Agave | 5 gal. | 6 | |
| | Agave parryi Parry's Agave | 5 gal. | 34 | |
| | Agave tequilana Weber Blue Agave | 5 gal. | 23 | |
| | Aloe barbadensis Medicinal Aloe | 5 gal. | 42 | |
| | Aloe x 'Blue Elf' Blue Elf Aloe | 5 gal. | 80 | |
| | Carnegiea gigantea Saguaro | 8" min. | 11 | |
| | Dasyliirion wheeleri Desert Spoon | 5 gal. | 5 | |
| | Ferocactus acanthodes Compass Barrel | bare root | 17 | |
| | Ferocactus gracilis Fire Barrel Cactus | bare root | 24 | |
| | Fouquieria splendens Ocotillo | bare root | 10 | |
| | Hesperaloe parviflora-red Red Hesperaloe | 5 gal. | 81 | |
| | Opuntia violacea santa-rita Purple Prickly Pear | 5 gal. | 19 | |
| | Pedilanthus macrocarpus Lady's Slipper | 5 gal. | 3 | |
| | Yucca baccata Banana Yucca | 5 gal. | 4 | |
| Vines | | | | |
| | Antigonon leptopus Queen's Wreath | 5 gal. | 5 | |
| MASS PLANTING | | | | |
| | ARTIFICIAL TURF - 1,763 SQ. FT., PIONEER BUILDING MATERIALS 'AUGUSTA'. | | | |
| Sym. | Description | | | |
| | 3/4" SCREENED DECOMPOSED GRANITE, ROCK PROS USA 'MAHOGANY', 2" THICK MINIMUM. | | | |

KEY MAP
SCALE: NTS



GREY PICKETT
landscape architecture | community design
7051 E. 5th Avenue, Suite 310
Scottsdale, AZ 85251
480.609.0069 | 480.609.0068



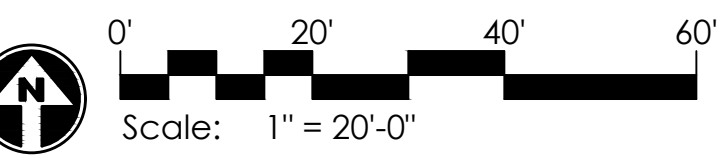
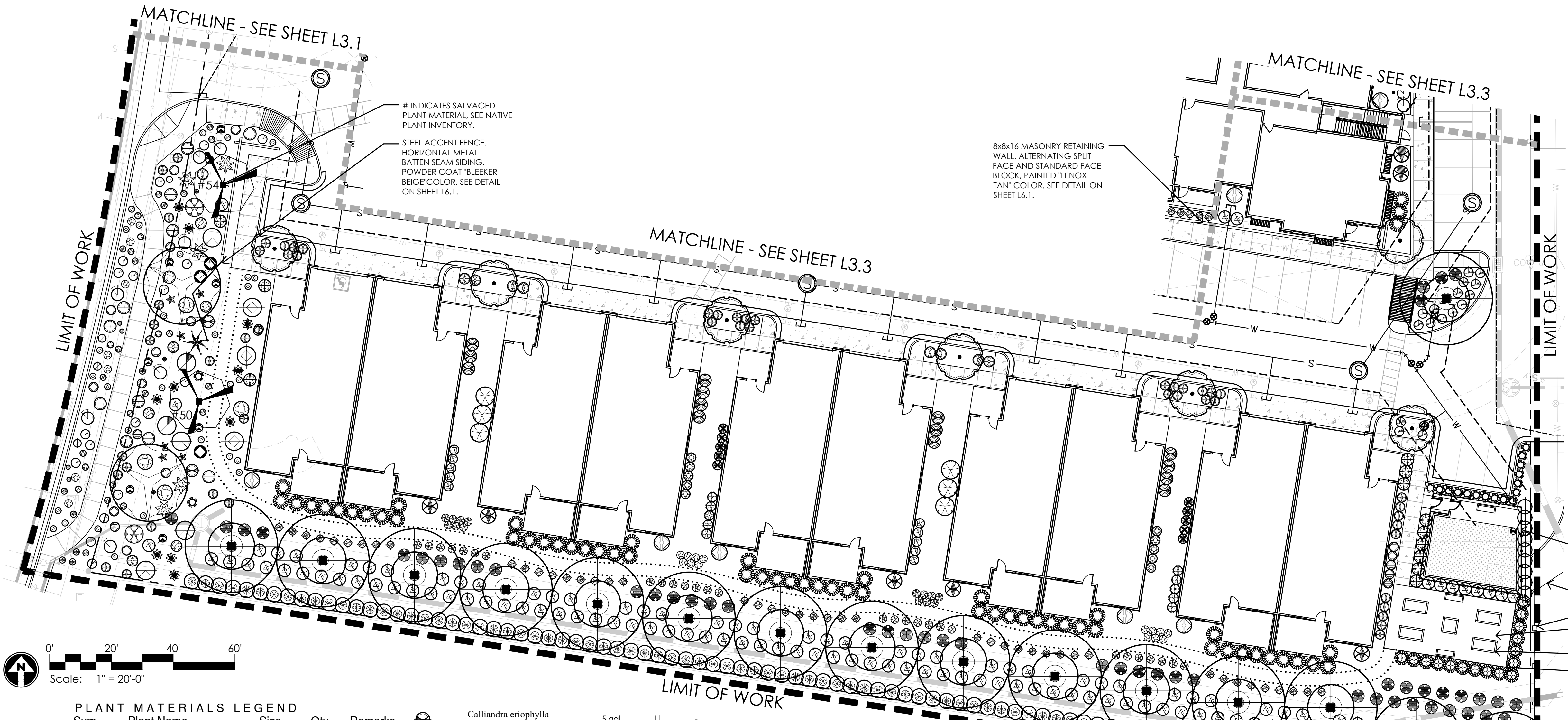
Headwaters Scottsdale
Scottsdale, Arizona

project #: HWG001
scale: 1" = 20'-0"
issued for:
drawn by: TEAM
date: 04/03/2023
drawing: Planting Plan
L3.3
of
Copyright © 2023 by 16-ZN-2023
4/5/2023



NOT FOR CONST.

- NOTES:
- 1. THE CONTRACTOR SHALL INSTALL NDS ROOT BARRIER PANELS AVAILABLE IN 20' ROLLS (OR APPROVED EQUAL) AT ALL TREES WITHIN 7'-0" FEET OF HARDSCAPE ELEMENTS INCLUDING (BUT NOT LIMITED TO) SIDEWALKS, ASPHALT, CONCRETE SLABS / FOOTINGS AND STRUCTURES. INSTALL PER ROOT BARRIER DETAIL. CONTRACTOR SHALL SUBMIT SPECIFICATION SHEETS OF PROPOSED ROOT BARRIER PANELS TO THE LANDSCAPE ARCHITECT FOR APPROVAL PRIOR TO INSTALLATION.
 - 2. CONTRACTOR IS RESPONSIBLE FOR ALL SHIPPING / DELIVERY COSTS ASSOCIATED TO HAVE PLANT MATERIAL SHIPPED TO THE SITE FOR ANY OUT OF STATE MATERIALS. THIS INCLUDES, BUT IS NOT LIMITED TO, SATISFYING ALL DEPT. OF AGRICULTURE REQUIREMENTS ASSOCIATED WITH OBTAINING APPROVAL.
 - 3. LANDSCAPE ARCHITECT TO APPROVE FINAL GRADING. PLANTING SHALL NOT OCCUR UNTIL FINAL GRADING IS APPROVED.
 - 4. LOCATIONS OF PLANTS SHOWN ON DRAWING ARE APPROXIMATE. LANDSCAPE ARCHITECT TO FIELD APPROVE ALL FINAL LOCATIONS PRIOR TO INSTALLATION. LANDSCAPE CONTRACTOR HAS OPTION TO FLAG LOCATIONS OR PLACE CONTAINER MATERIAL.
 - 5. DUE TO SEASONAL AND OR UNFORESEEN CONSTRAINTS SOME PLANT MATERIAL WILL POSSIBLY NOT BE AVAILABLE AT TIME OF INSTALLATION. LANDSCAPE CONTRACTOR TO SUBMIT LIST OF ANY NON-AVAILABLE MATERIAL TO LANDSCAPE ARCHITECT FOR REPLACEMENTS TO BE SELECTED.
 - 6. ALL PLANT MATERIAL IS TO BE RETAIL QUALITY.
 - 7. LANDSCAPE CONTRACTOR TO PROVIDE PICTURES OR SAMPLES OF ALL PLANT MATERIAL PRIOR TO INSTALLATION FOR APPROVAL.
 - 8. ALL PLANT MATERIAL SOURCED FROM OUTSIDE OF ARIZONA TO BE PROPERLY ACCLIMATED TO ARIZONA CLIMATE DEPENDING ON TIME OF YEAR OF INSTALLATION.
METHODS: SUN-SCREEN CLOTH/FABRIC TO BE INSTALLED ABOVE PLANT MATERIAL.
 - 9. ALL CACTI OR ACCENT MATERIAL WITH SHARP THORNS TO BE PLANTED A MINIMUM OF 3'-0" CLEAR FROM SIDEWALKS.
 - 10. LANDSCAPE ARCHITECT RESERVES THE RIGHT TO REFUSE OR SEND BACK ANY PLANT MATERIAL THAT DOES NOT MEET QUALITY STANDARDS.



PLANT MATERIALS LEGEND

| Sym. | Plant Name | Size | Qty | Remarks |
|---|---|---|-----|---------------|
| Trees | | | | |
| | Acacia aneura | 36" box | 19 | ADWR |
| | Mulga Acacia | 36 box, 7.0-9.0' High, 4.0-6.0' Wide, 1.5-2.0 Caliper | | |
| | Acacia willardiana | 36" box | 6 | |
| | Palo Blanco | 36 box, 9.0-11.0' High, 5.0-7.0' Wide, 2.0-2.5 Caliper | | |
| | Caesalpinia cacalaco 'Smoothie' | 36" box | 6 | |
| | Thornless Cascalote | | | |
| | Chilopsis linearis 'Bubba' | 36" box | 12 | |
| | Bubba Desert Willow | | | |
| | Ebanopsis ebano | 54" box | 18 | |
| | Texas Ebony | | | |
| | Olney tesota | 36" box | 4 | |
| | Ironwood | 36 box, 7.0-8.0' High, 5.0-6.0' Wide | | |
| | Parkinsonia praecox | 36" box | 9 | |
| | Palo Brea | 36 box, 8.0-9.0' High, 6.0-7.0' Wide, 1.75-2.25 Caliper | | |
| | Prosopis glandulosa 'Maverick' | 36" box | 5 | |
| | Thornless Texas Honey Mesquite | | | |
| | Prosopis X Phoenix | 36" box | 16 | |
| | Thornless Mesquite | | | |
| | Vitex agnus-castus | 36" box | 10 | |
| | Chaste Tree | 36 box, 7.0-9.0' High, 5.0-7.0' Wide | | |
| Shrubs | | | | |
| | Ambrosia deltoidea | 1 gal. | 78 | |
| | Triangle Leaf Bursage | | | |
| | Asparagus densiflorus 'Myers' | 5 gal. | 19 | |
| | Foxtail Fern | | | |
| | Buxus microphylla japonica | 5 gal. | 32 | |
| | Boxwood | | | |
| | Caesalpinia mexicana | 5 gal. | 4 | |
| | Mexican Bird of Paradise | | | |
| | Calliandra californica | 5 gal. | 2 | |
| | Red Fairy Duster | | | |
| | Calliandra eriophylla | 5 gal. | 11 | |
| | Pink Fairy Duster | | | |
| | Calliandra eriophylla 'Maricopa Red' | 1 gal. | 17 | |
| | Prostrate Fairy Duster | | | |
| | Calliandra 'Sierra Star' | 5 gal. | 5 | |
| | Sierra Star | | | |
| | Convolvulus cneorum | 1 gal. | 60 | |
| | Bush Morning Glory | | | |
| | Cuphea ilavea | 5 gal. | 6 | |
| | Bat Faced Cuphea | | | |
| | Dalea capitata | 1 gal. | 116 | |
| | Golden Dalea | | | |
| | Dalea capitata 'Sierra Gold' | 5 gal. | 74 | |
| | Sierra Gold Dalea | | | |
| | Dalea frutescens | 5 gal. | 33 | |
| | Black Dalea | | | |
| | Dalea pulchra | 5 gal. | 7 | |
| | Indigo Bush | | | |
| | Dodonaea viscosa | 5 gal. | 10 | |
| | Bop Bush | | | |
| | Encelia farinosa | 5 gal. | 19 | |
| | Brittlebush | | | |
| | Eremophila maculata 'Valentine' | 5 gal. | 6 | |
| | Valentine Shrub | | | |
| | Justicia californica | 5 gal. | 9 | |
| | Chuparosa | | | |
| | Larrea tridentata | 5 gal. | 9 | |
| | Creosote | | | |
| | Lantana camara 'Carnival' | 1 gal. | 47 | |
| | Carnival Lantana | | | |
| | Lantana camara 'Dallas Red' | 5 gal. | 45 | |
| | Dallas Red Lantana | | | |
| | Leucophyllum frutescens 'Compacta' | 5 gal. | 58 | |
| | Compact Texas Sage | | | |
| | Leucophyllum laevigatum | 5 gal. | 37 | |
| | Chihuahuan Sage | | | |
| | Leucophyllum langmaniae 'Lynn's Legacy' | 5 gal. | 12 | |
| | Lynn's Legacy Sage | | | |
| | Leucophyllum zygophyllum 'Cimarron' | 5 gal. | 66 | |
| | Cimarron Sage | | | |
| | Muhlenbergia lindheimeri 'Autumn Glow' | 5 gal. | 7 | |
| | Autumn Glow TM | | | |
| | Myrtus communis 'Compacta' | 5 gal. | 92 | |
| | Compact Myrtle | | | |
| | Nandina domestica 'Nana' | 15 gal. | 20 | |
| | Dwarf Heavenly Bamboo | | | |
| | Penstemon ambiguus | 1 gal. | 12 | |
| | Sand Penstemon | | | |
| | Penstemon eatonii | 1 gal. | 55 | |
| | Firecracker Penstemon | | | |
| | Penstemon pseudospectabilis | 1 gal. | 10 | |
| | Purple Penstemon | | | |
| | Rhaphiolepis indica 'Pinkie' | 5 gal. | 12 | |
| | Pinkie Indian Hawthorne | | | |
| | Rhaphiolepis indica 'Clara' | 5 gal. | 1 | |
| | Clara Indian Hawthorne | | | |
| | Ruellia brittoniana | 5 gal. | 10 | Purple Flower |
| | Ruellia | | | |
| | Ruellia brittoniana 'Blanca' | 5 gal. | 44 | |
| | White Dwarf Ruellia | | | |
| | Ruellia peninsularis | 5 gal. | 157 | |
| | Desert Ruellia | | | |
| | Russelia equisetiformis | 15 gal. | 26 | |
| | Coral Fountain | | | |
| | Salvia chamaedryoides | 15 gal. | 97 | |
| | Blue Chihuahuan Sage | | | |
| | Salvia clevelandii | 5 gal. | 3 | |
| | Chaparral Sage | | | |
| | Salvia greggii | 5 gal. | 50 | |
| | Autumn Sage | | | |
| | Salvia greggii 'Texas Wedding' | 5 gal. | 24 | |
| | White Texas Sage | | | |
| | Simmondsia chinensis | 5 gal. | 21 | |
| | Jojoba | | | |
| | Tecoma stans | 5 gal. | 1 | |
| | Yellow Bells | | | |
| | Vaqueria californica | 5 gal. | 98 | |
| | Arizona Rosewood | | | |
| Groundcovers | | | | |
| | Baileya multiradiata | 1 gal. | 203 | |
| | Desert Marigold | | | |
| | Convolvulus sabatius | 1 gal. | 9 | |
| | Ground Morning Glory | | | |
| | Dalea greggii | 5 gal. | 55 | |
| | Trailing Indigo Bush | | | |
| | Dyssodia pentachaeta | 5 gal. | 87 | |
| | Golden Dysodia | | | |
| | Gaura lindheimeri | 5 gal. | 38 | |
| | Pink Gaura | | | |
| | Glandularia goodingii | 1 gal. | 69 | |
| | Gooding Verbena | | | |
| | Glandularia rigida | 5 gal. | 110 | |
| | Sandpaper Verbena | | | |
| | Lantana montevidensis | 1 gal. | 15 | |
| | Purple Trailing Lantana | | | |
| | Lantana montevidensis 'White' | 1 gal. | 109 | |
| | White Lantana | | | |
| | Lantana 'New Gold' | 1 gal. | 153 | |
| | New Gold Lantana | | | |
| | Lantana montevidensis 'Yellow Trailing' | 1 gal. | 83 | |
| | Yellow Trailing Lantana | | | |
| Vines | | | | |
| | Antigonon leptopus | 5 gal. | 5 | |
| | Queen's Wreath | | | |
| MASS PLANTING | | | | |
| | ARTIFICIAL TURF - 1,763 SQ. FT., PIONEER BUILDING MATERIALS 'AUGUSTA'. | | | |
| Sym. Description | | | | |
| | 3/4" SCREENED DECOMPOSED GRANITE, ROCK PROS USA 'MAHOGANY', 2" THICK MINIMUM. | | | |
| NOTE: ALL PLANTINGS USED FOR SCREENING PURPOSES (INCLUDING VINES) ARE TO BE EVERGREEN SPECIES. | | | | |

KEY MAP

SCALE: NTS



Headwaters Scottsdale
Scottsdale, Arizona

revisions:

project #:
HWG001

scale:
1" = 20'-0"

issued for:

drawn by:
TEAM

date:
04/03/2023

drawing:
Planting Plan

L3.4

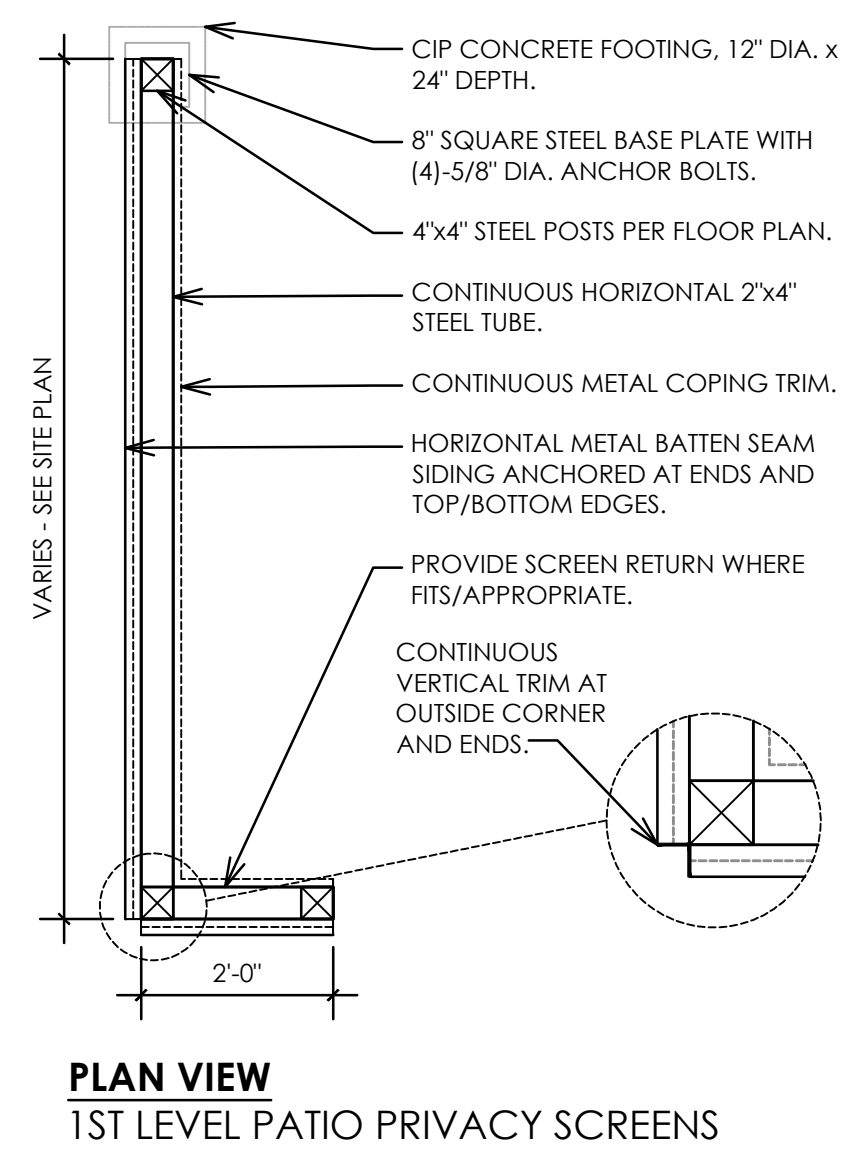
of

Copyright © 2023 by
16-ZN-2022
4/5/2023

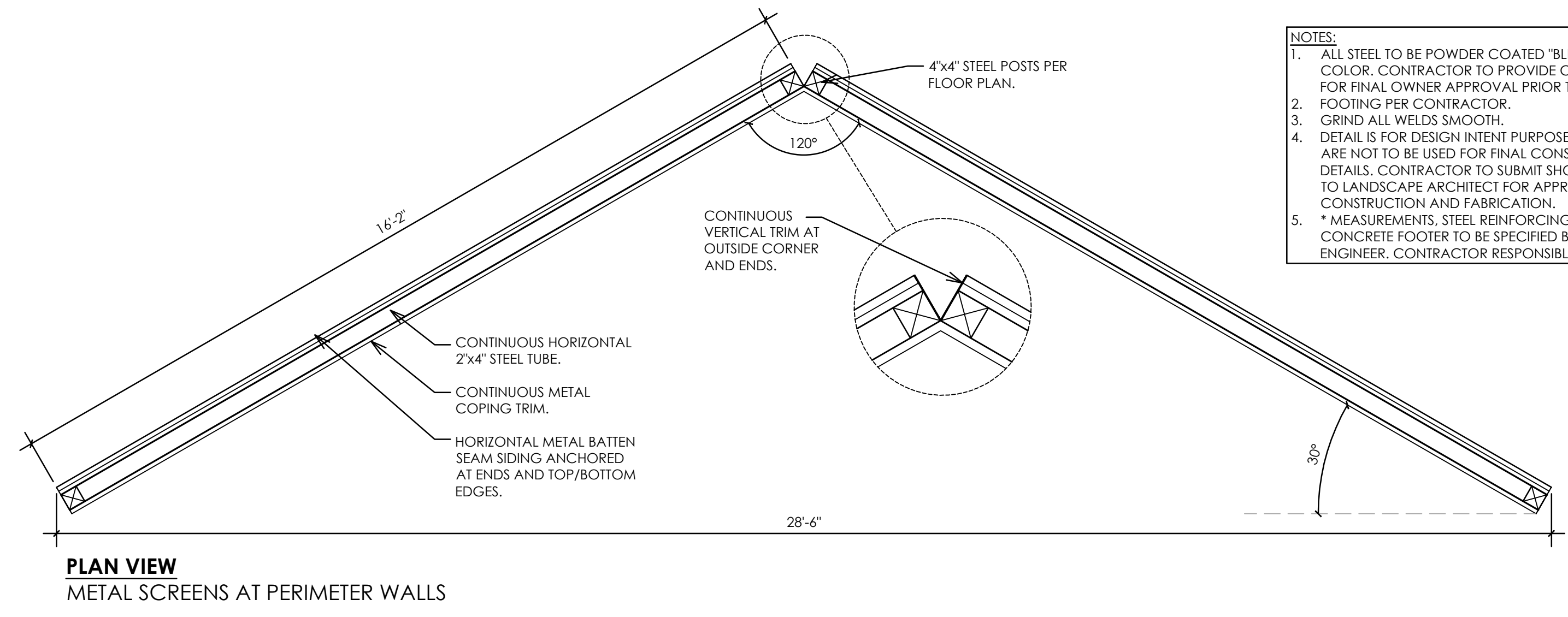
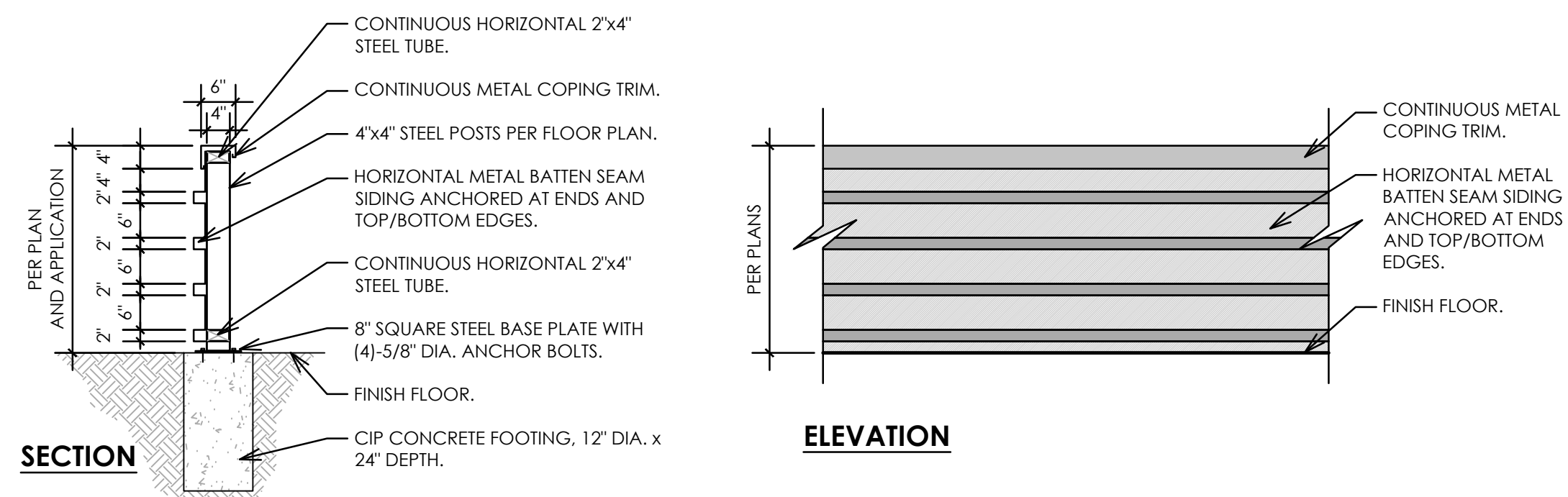


NOT FOR CONST.

Headwaters Scottsdale
 Scottsdale, Arizona

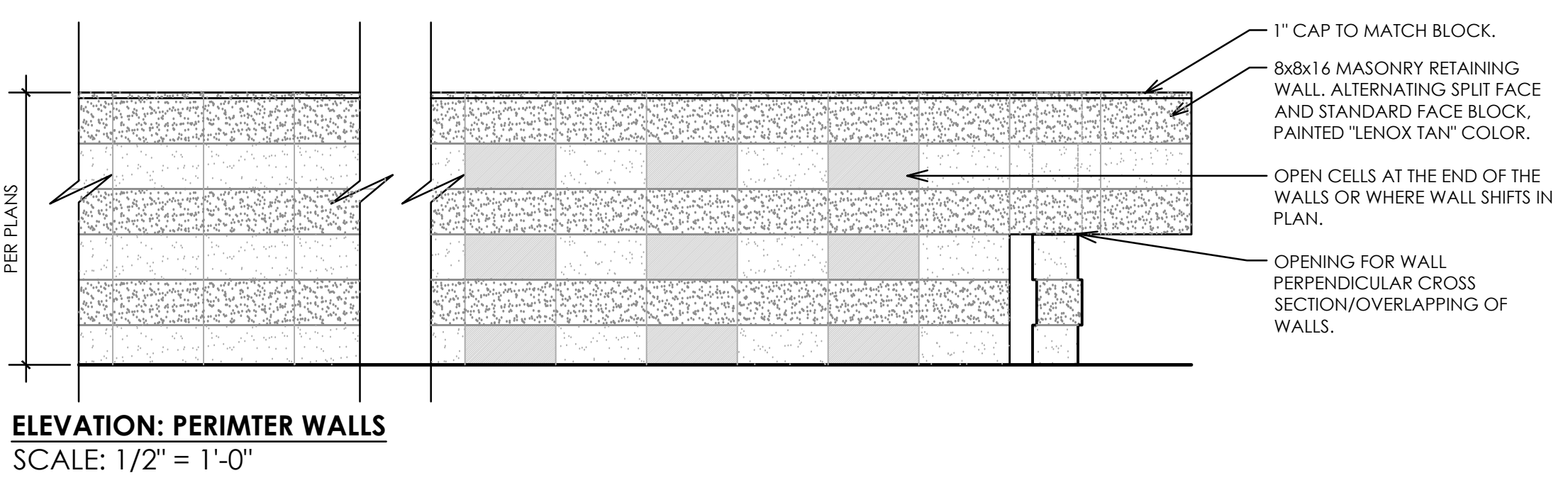


- NOTES:**
1. ALL STEEL TO BE POWDER COATED "BLEEKER BEIGE" COLOR. CONTRACTOR TO PROVIDE COLOR SAMPLES FOR FINAL OWNER APPROVAL PRIOR TO PAINTING.
 2. FOOTING PER CONTRACTOR.
 3. GRIND ALL WELDS SMOOTH.
 4. DETAIL IS FOR DESIGN INTENT PURPOSES ONLY AND ARE NOT TO BE USED FOR FINAL CONSTRUCTION DETAILS. CONTRACTOR TO SUBMIT SHOP DRAWINGS TO LANDSCAPE ARCHITECT FOR APPROVAL PRIOR TO CONSTRUCTION AND FABRICATION.
 5. * MEASUREMENTS, STEEL REINFORCING, AND CONCRETE FOOTER TO BE SPECIFIED BY STRUCTURAL ENGINEER. CONTRACTOR RESPONSIBLE.

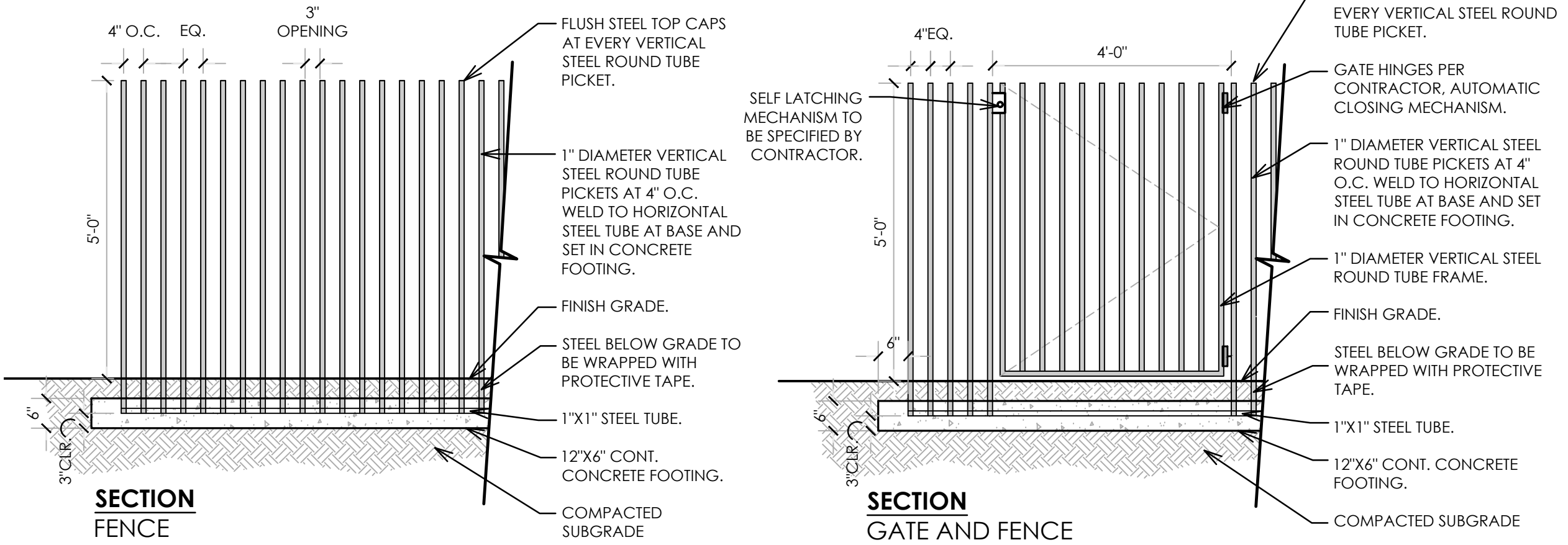


Steel Privacy Screens and Accent Fence
 Scale: 1/2" = 1'-0"

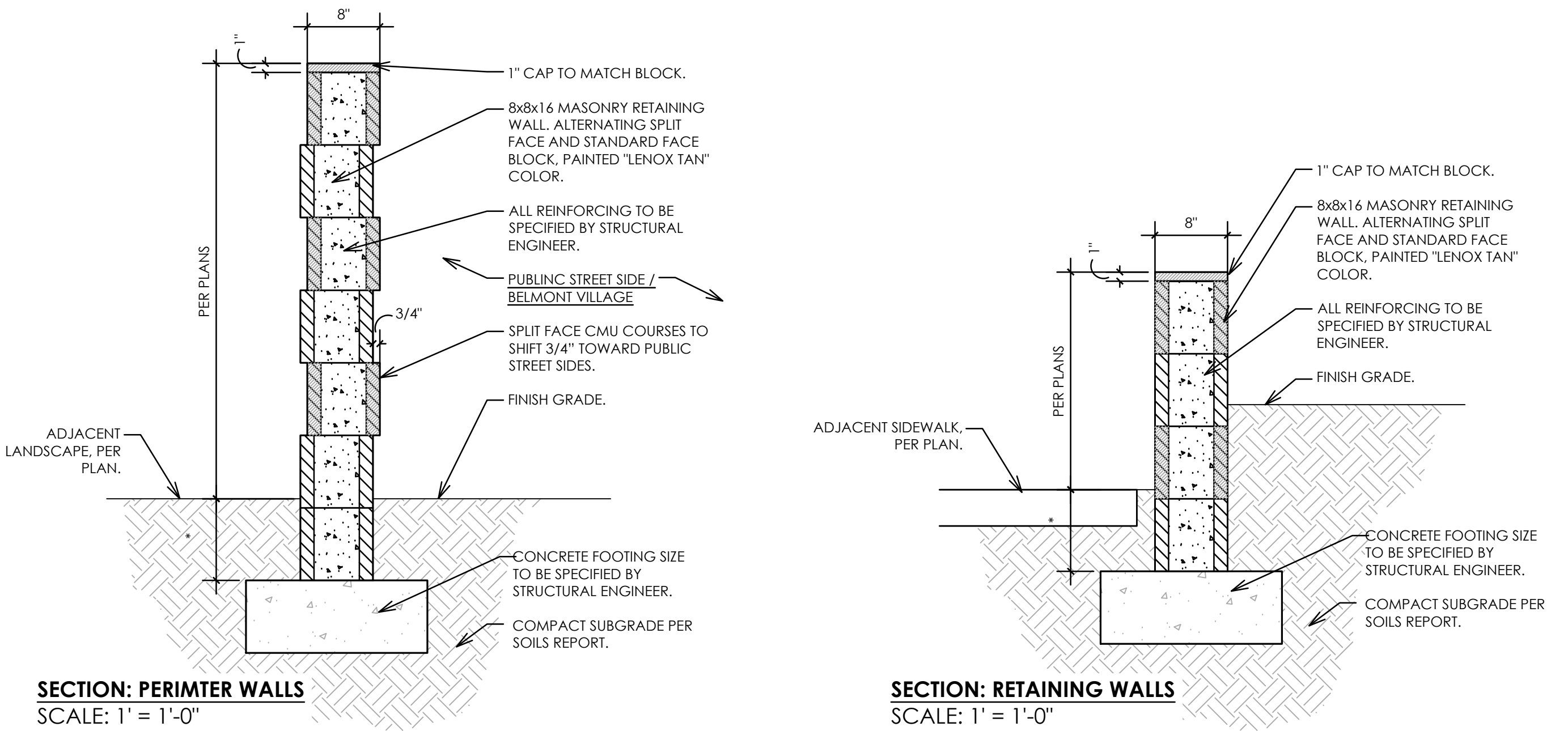
- NOTES:**
1. FOOTING PER CONTRACTOR.
 2. DETAIL IS FOR DESIGN INTENT PURPOSES ONLY AND ARE NOT TO BE USED FOR FINAL CONSTRUCTION DETAILS. CONTRACTOR TO SUBMIT SHOP DRAWINGS TO LANDSCAPE ARCHITECT FOR APPROVAL PRIOR TO CONSTRUCTION AND FABRICATION.
 3. * MEASUREMENTS, STEEL REINFORCING, AND CONCRETE FOOTER TO BE SPECIFIED BY STRUCTURAL ENGINEER. CONTRACTOR RESPONSIBLE.



- NOTES:**
1. ALL STEEL TO BE POWDER COATED "BLEEKER BEIGE" COLOR. CONTRACTOR TO PROVIDE COLOR SAMPLES FOR FINAL OWNER APPROVAL PRIOR TO PAINTING.
 2. FOOTING PER CONTRACTOR.
 3. GRIND ALL WELDS SMOOTH.
 4. DETAIL IS FOR DESIGN INTENT PURPOSES ONLY AND ARE NOT TO BE USED FOR FINAL CONSTRUCTION DETAILS. CONTRACTOR TO SUBMIT SHOP DRAWINGS TO LANDSCAPE ARCHITECT FOR APPROVAL PRIOR TO CONSTRUCTION AND FABRICATION.
 5. * MEASUREMENTS, STEEL REINFORCING, AND CONCRETE FOOTER TO BE SPECIFIED BY STRUCTURAL ENGINEER. CONTRACTOR RESPONSIBLE.
 6. FENCE SHALL STEP WITH GRADE TO BE NO LESS THAN 5'-0" TALL AT ANY POINT.
 7. FENCE SHALL MEET ALL APPLICABLE CODES.



Round Vertical Steel Tube Fence and Gate
 Scale: 1/2" = 1'-0"



Masonry Walls
 Scale: per detail

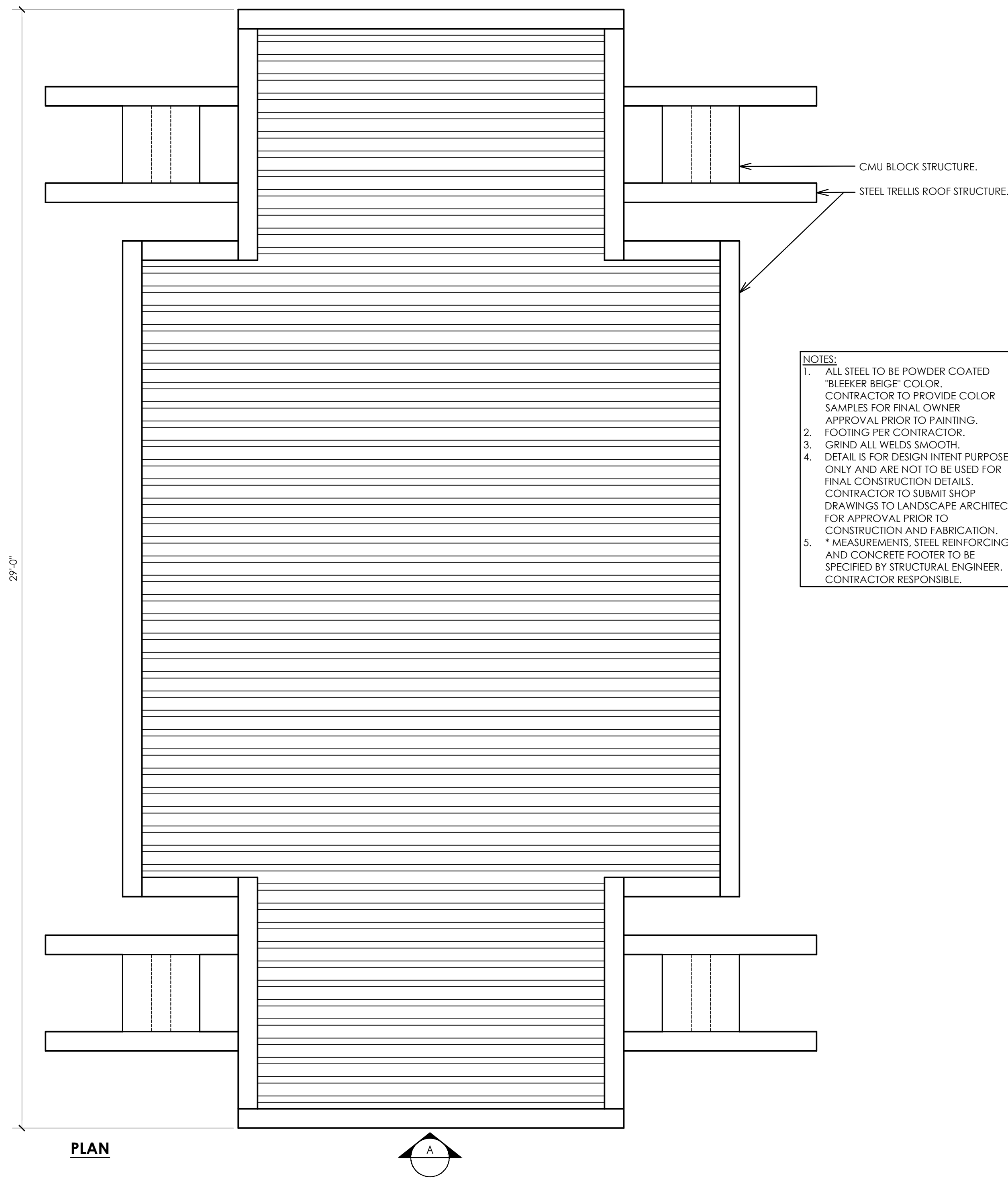
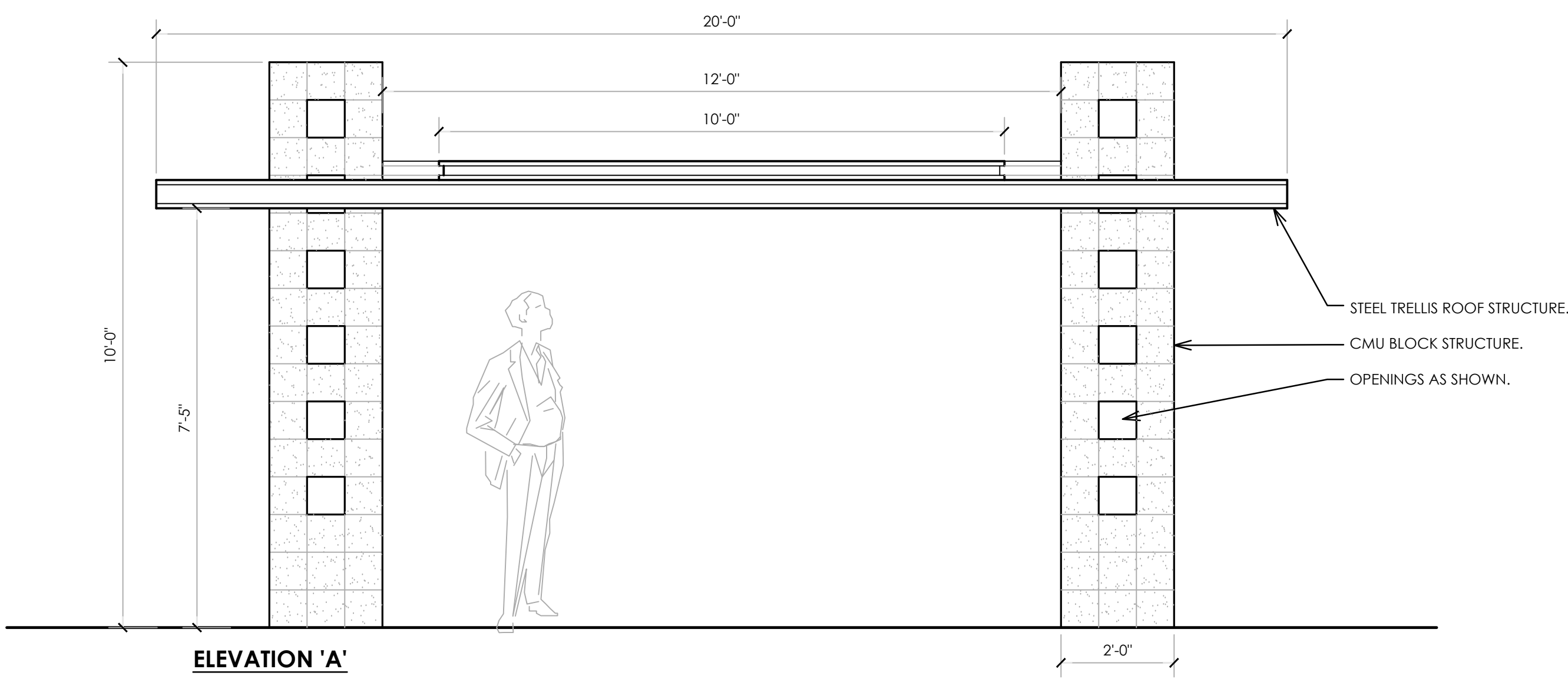
revisions:

project #: HWG001
 scale: As Noted
 issued for:

drawn by: TEAM
 date: 04/03/2023

drawing: Hardscape Details

L6.1
 of



- NOTES:**
1. ALL STEEL TO BE POWDER COATED "BLEEKER BEIGE" COLOR. CONTRACTOR TO PROVIDE COLOR SAMPLES FOR FINAL OWNER APPROVAL PRIOR TO PAINTING.
 2. FOOTING PER CONTRACTOR.
 3. GRIND ALL WELDS SMOOTH.
 4. DETAIL IS FOR DESIGN INTENT PURPOSES ONLY AND ARE NOT TO BE USED FOR FINAL CONSTRUCTION DETAILS. CONTRACTOR TO SUBMIT SHOP DRAWINGS TO LANDSCAPE ARCHITECT FOR APPROVAL PRIOR TO CONSTRUCTION AND FABRICATION.
 5. * MEASUREMENTS, STEEL REINFORCING, AND CONCRETE FOOTER TO BE SPECIFIED BY STRUCTURAL ENGINEER. CONTRACTOR RESPONSIBLE.

Trellis Structure at Pool
Scale: 1/2" = 1'-0"

GREY PICKETT
 landscape architecture | community design
 7057 E. 5th Avenue, Suite 200
 Phoenix, AZ 85018
 480.609.0077p | 480.609.0068f

NOT FOR CONST.

Headwaters Scottsdale
 Scottsdale, Arizona

revisions:
 project #: HWG001 scale: As Noted
 issued for:
 drawn by: TEAM date: 04/03/2023
 drawing: Hardscape Details
L6.2
 of