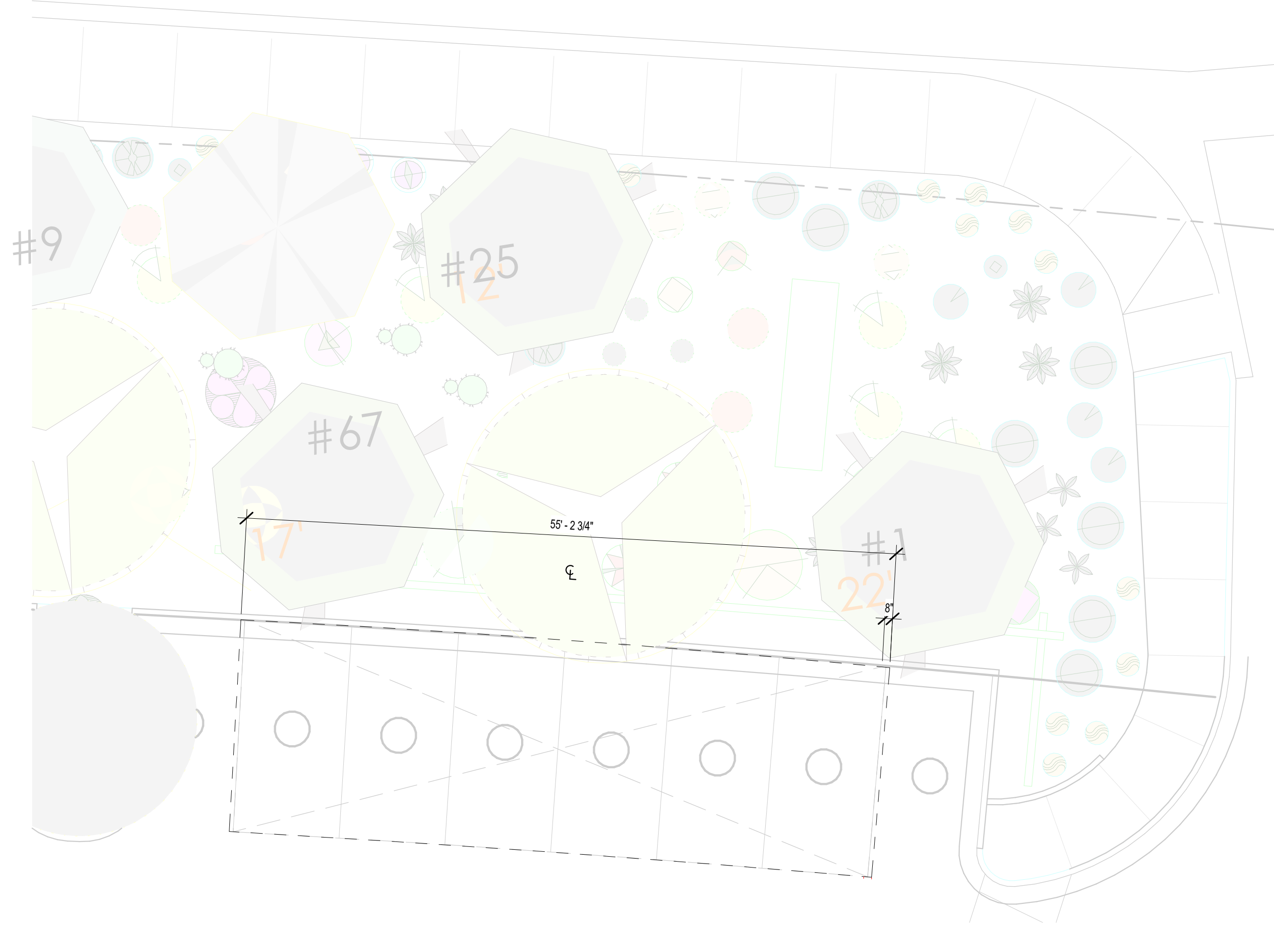
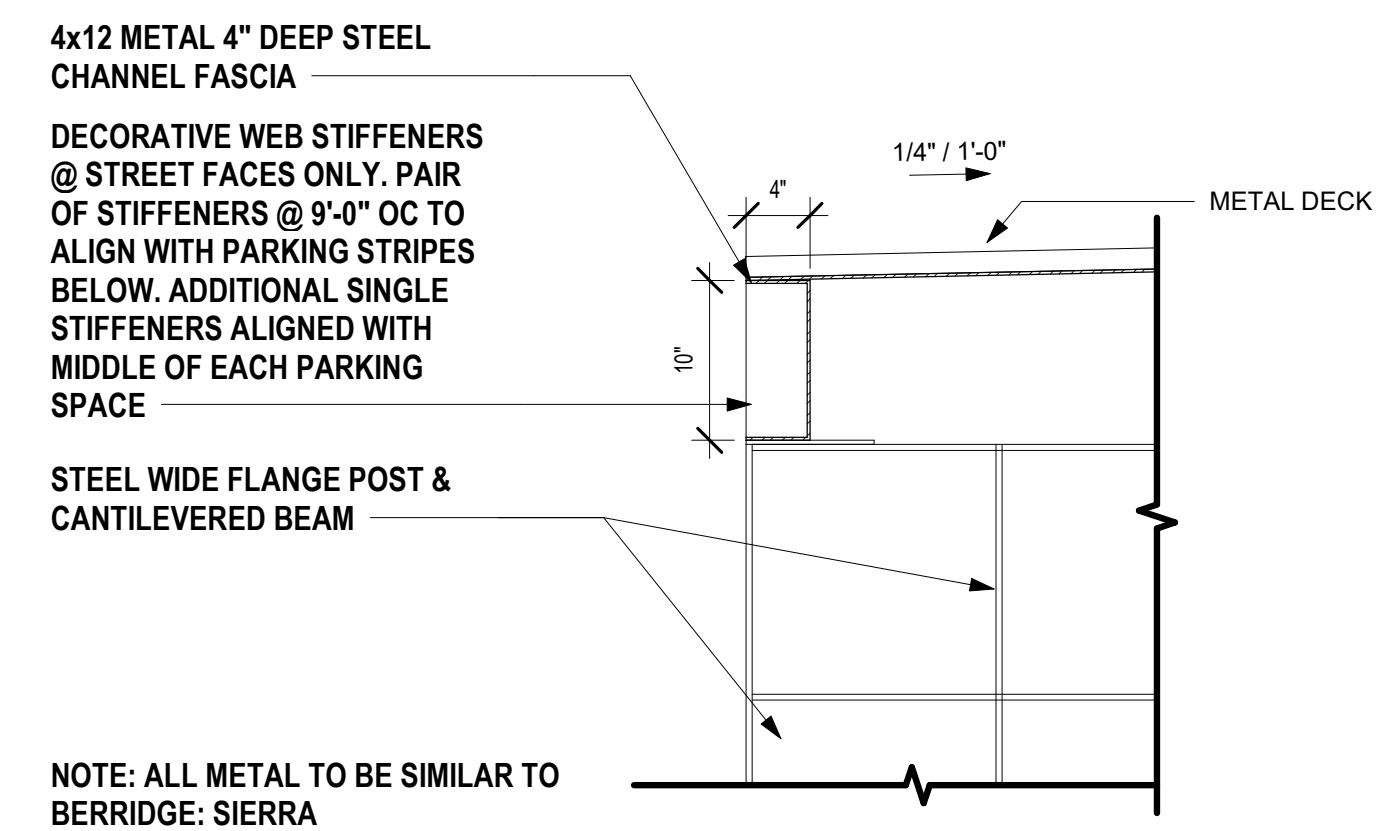


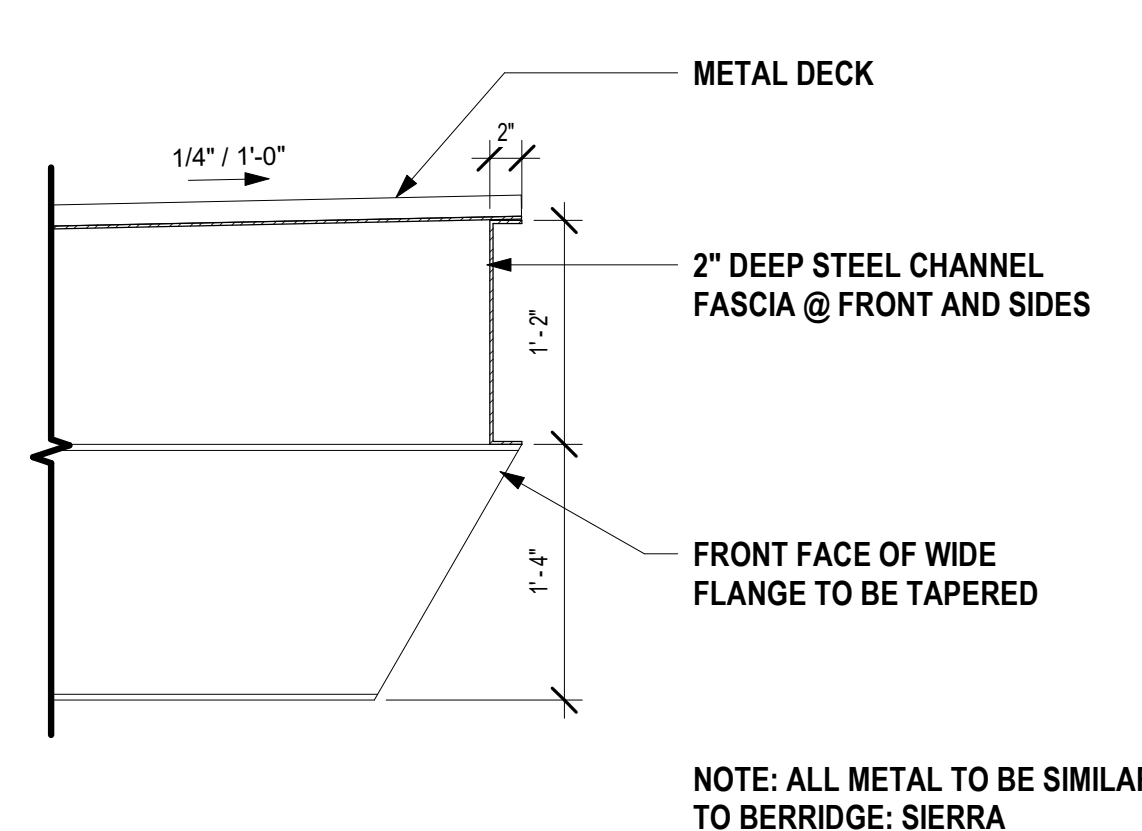
10 TYPICAL CARPORT - ROOF LEVEL
SCALE: 1/8" = 1'-0"



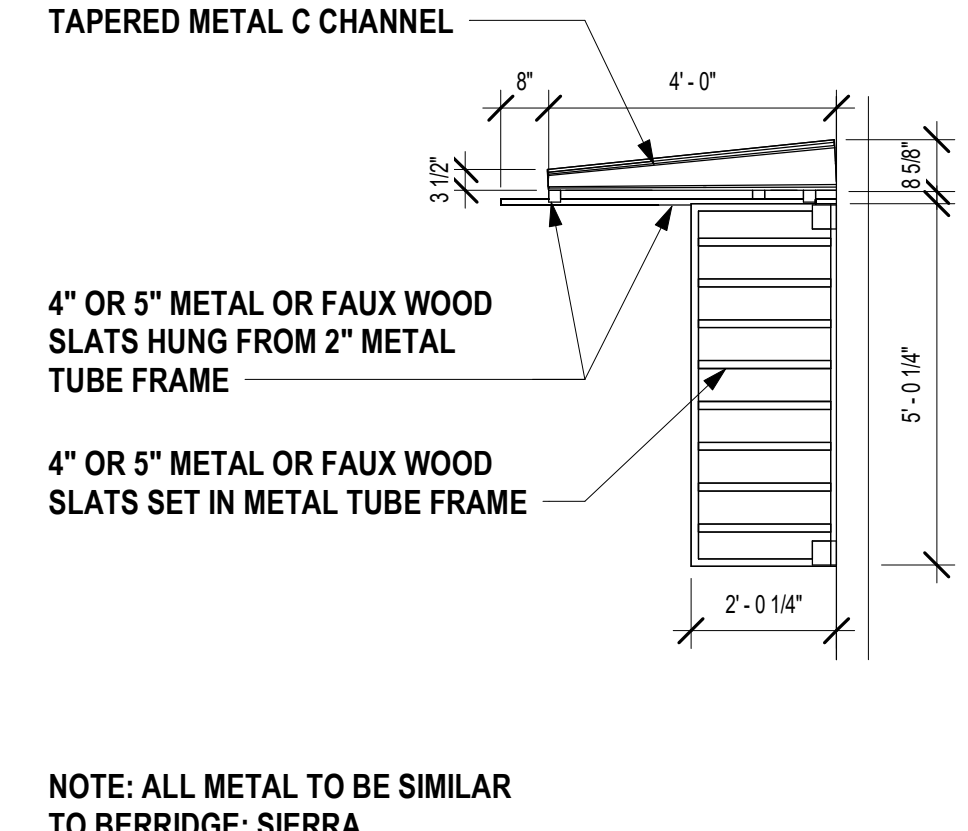
9 TYPICAL CARPORT - GROUND LEVEL
SCALE: 1/8" = 1'-0"



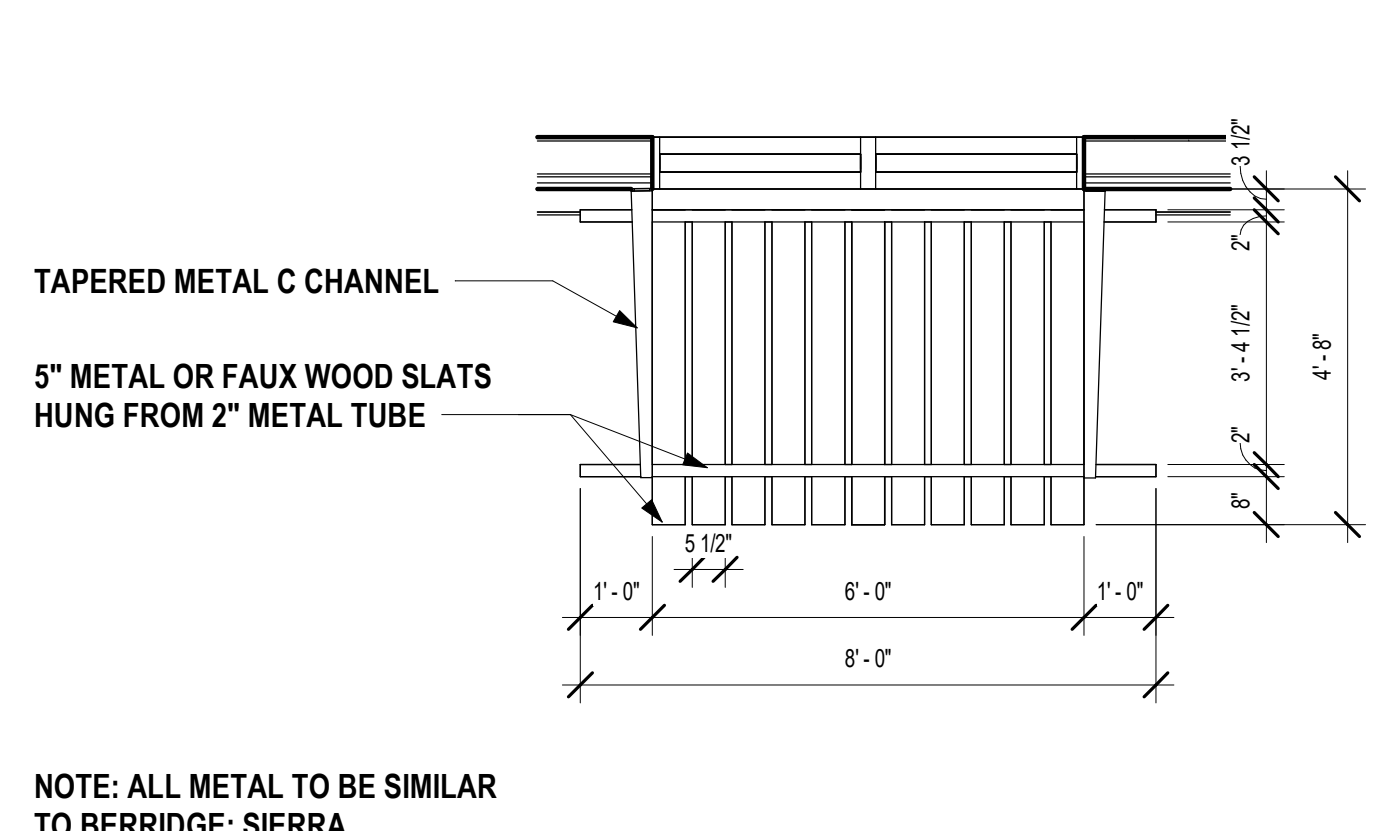
8 CARPORT FASCIA - REAR
SCALE: 1" = 1'-0"



7 CARPORT FASCIA - FRONT
SCALE: 1" = 1'-0"

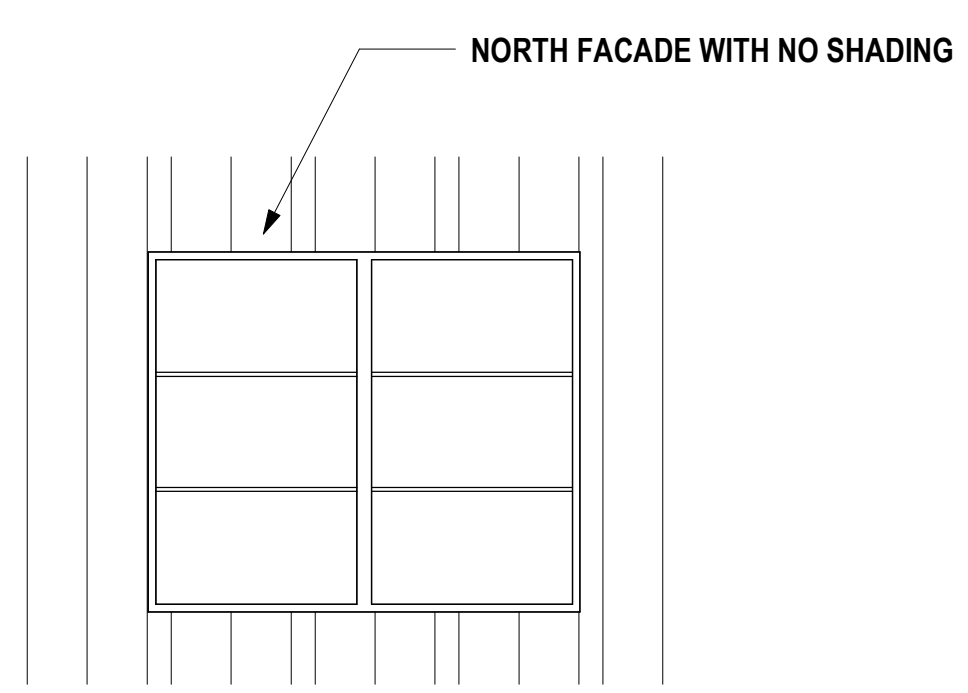


6 TYPICAL VERTICAL SHADING ELEMENT
SCALE: 3/8" = 1'-0"

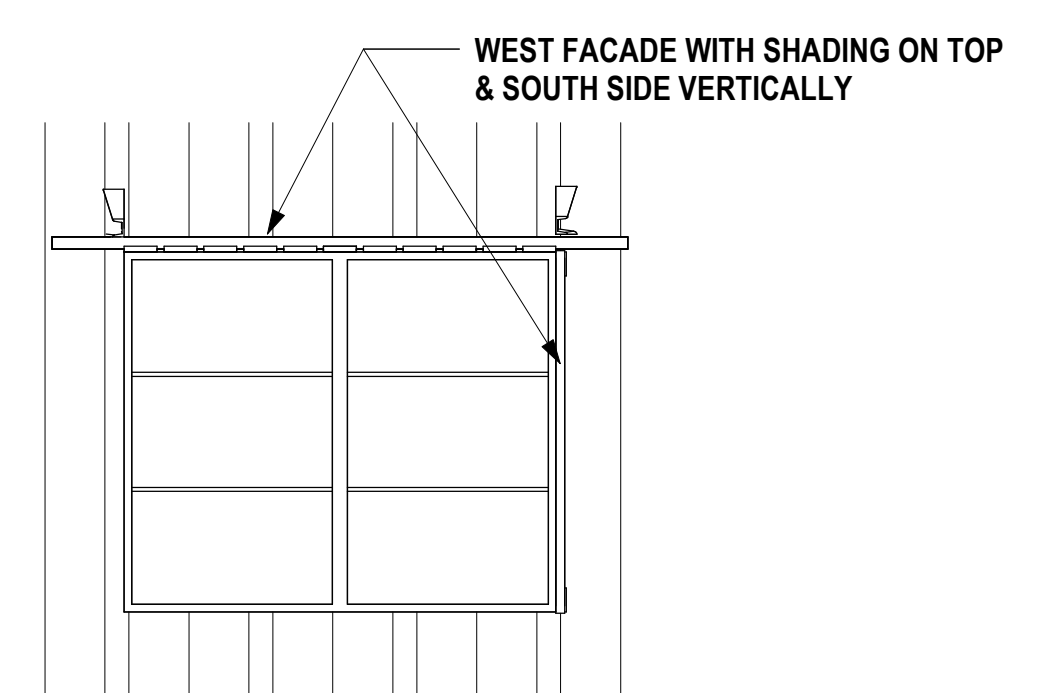


5 TYPICAL HORIZONTAL SHADE DEVICE
SCALE: 3/8" = 1'-0"

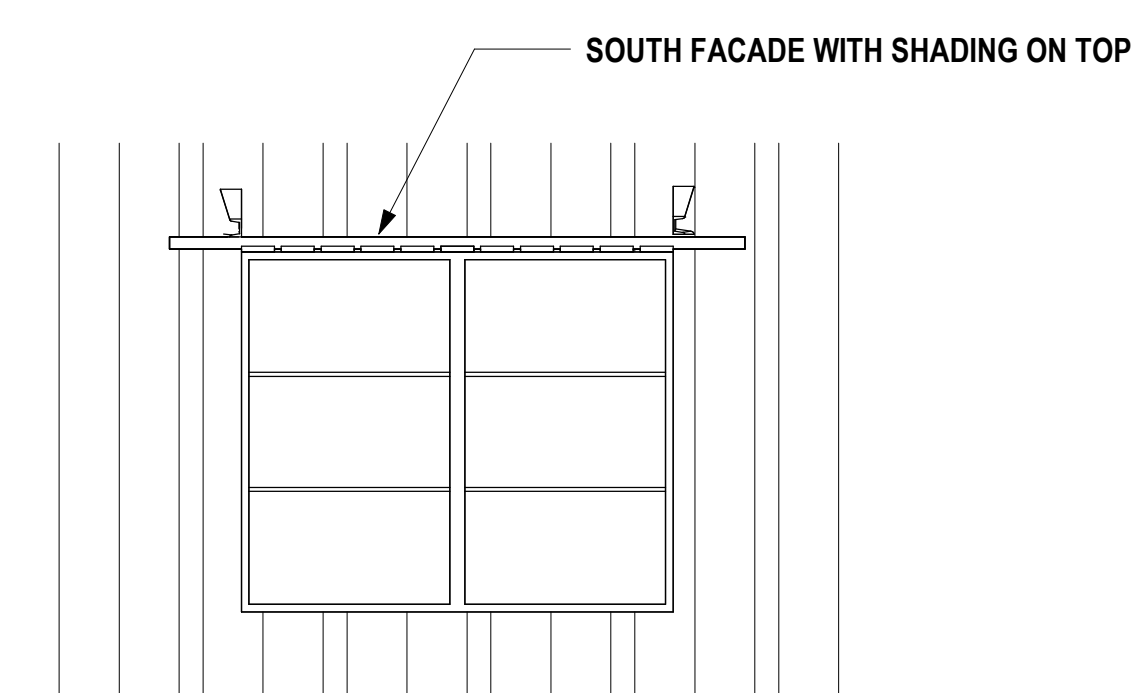
- SHADING DEVICE STRATEGY
- NO SHADING DEVICES AT ALL WINDOWS ON THE GROUND FLOOR
 - NO SHADING DEVICES ON RECESSED BUILDING PLANES, ONLY ON PROUD ELEMENTS
 - ON PROUD BUILDING FACES @ FLOORS 2 & 3:
 - NO SHADING DEVICES ON NORTH FACING FACADES
 - BOTH VERTICAL (SOUTH SIDE) AND HORIZONTAL SHADING DEVICES ON WEST FACING FACADES
 - ONLY HORIZONTAL SHADING DEVICES ON WEST FACING FACADES
 - ONLY VERTICAL (SOUTH SIDE) SHADING DEVICES ON EAST FACING FACADES



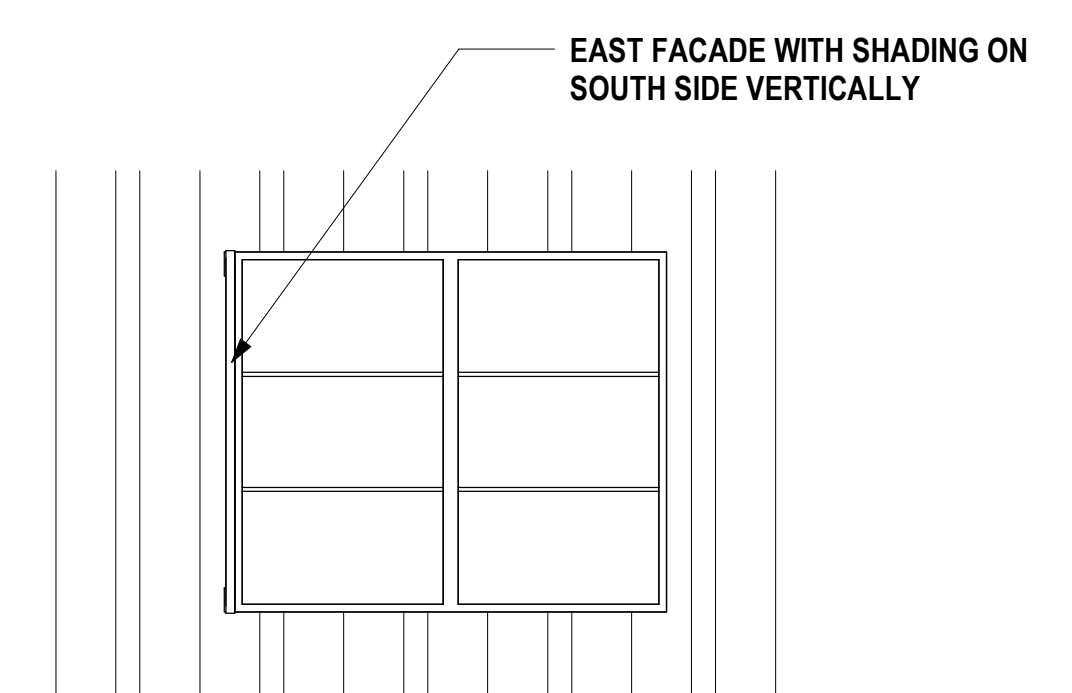
4 NORTH ELEVATION WINDOW SHADE
SCALE: 3/8" = 1'-0"



3 WEST ELEVATION WINDOW SHADE
SCALE: 3/8" = 1'-0"



2 SOUTH ELEVATION WINDOW SHADE
SCALE: 3/8" = 1'-0"



1 EAST ELEVATION WINDOW SHADE
SCALE: 3/8" = 1'-0"

SIDE SHADE WINDOW ELEVATION

21-v-3

EXTERIOR DETAILS -
WINDOW SHADING
DEVICE &
CARPORTS