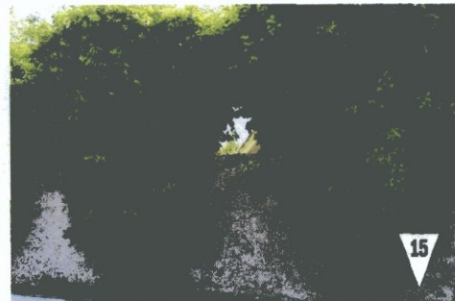
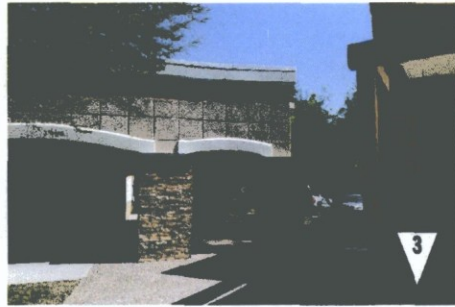


Simulations
Photos
All Graphics (no plans)



FOR: GENUINE CONCEPTS
THE VIG
 AT MCCORMICK RANCH
 EXPANSION
 SCOTTSDALE, ARIZONA

DEVELOPMENT REVIEW
**EXISTING
 CONDITIONS PHOTOS**
 PROJECT # 14024
 2016 . 09 . 09

AV3
 design studio
 AV3DESIGNSTUDIO.COM
 602.326.3387

THIS DRAWING IS AN INSTRUMENT OF SERVICE AND THE PROPERTY OF AV3 DESIGN STUDIO AND SHALL REMAIN THEIR PROPERTY. THE USE OF THIS DRAWING SHALL BE RESTRICTED TO THE ORIGINAL SITE FOR WHICH IT WAS PREPARED AND PUBLICATION THEREOF IS EXPRESSLY LIMITED TO SUCH USE. REUSE, REPRODUCTION OR PUBLICATION BY ANY MEANS IN WHOLE OR IN PART IS PROHIBITED WITHOUT THEIR WRITTEN CONSENT.



FOR: GENUINE CONCEPTS
THE VIG
 AT McCORMICK RANCH
 EXPANSION
 SCOTTSDALE, ARIZONA



DEVELOPMENT REVIEW
**EXISTING
 CONDITIONS AERIAL**
 PROJECT # 14024
 2016 . 09 . 09

AV3
 design studio
 AV3DESIGNSTUDIO.COM
 602.326.3387

COPYRIGHT 2016:
 THIS DRAWING IS AN INSTRUMENT OF SERVICE AND THE PROPERTY OF AV3 DESIGN STUDIO AND SHALL REMAIN THEIR PROPERTY. THE USE OF THIS DRAWING SHALL BE RESTRICTED TO THE ORIGINAL SITE FOR WHICH IT WAS PREPARED AND PUBLICATION THEREOF IS EXPRESSLY LIMITED TO SUCH USE. REUSE, REPRODUCTION OR PUBLICATION BY ANY METHOD IN WHOLE OR IN PART IS PROHIBITED WITHOUT THEIR WRITTEN CONSENT.

45-DR-2016
9/29/2016



FOR GENUINE CONCEPTS

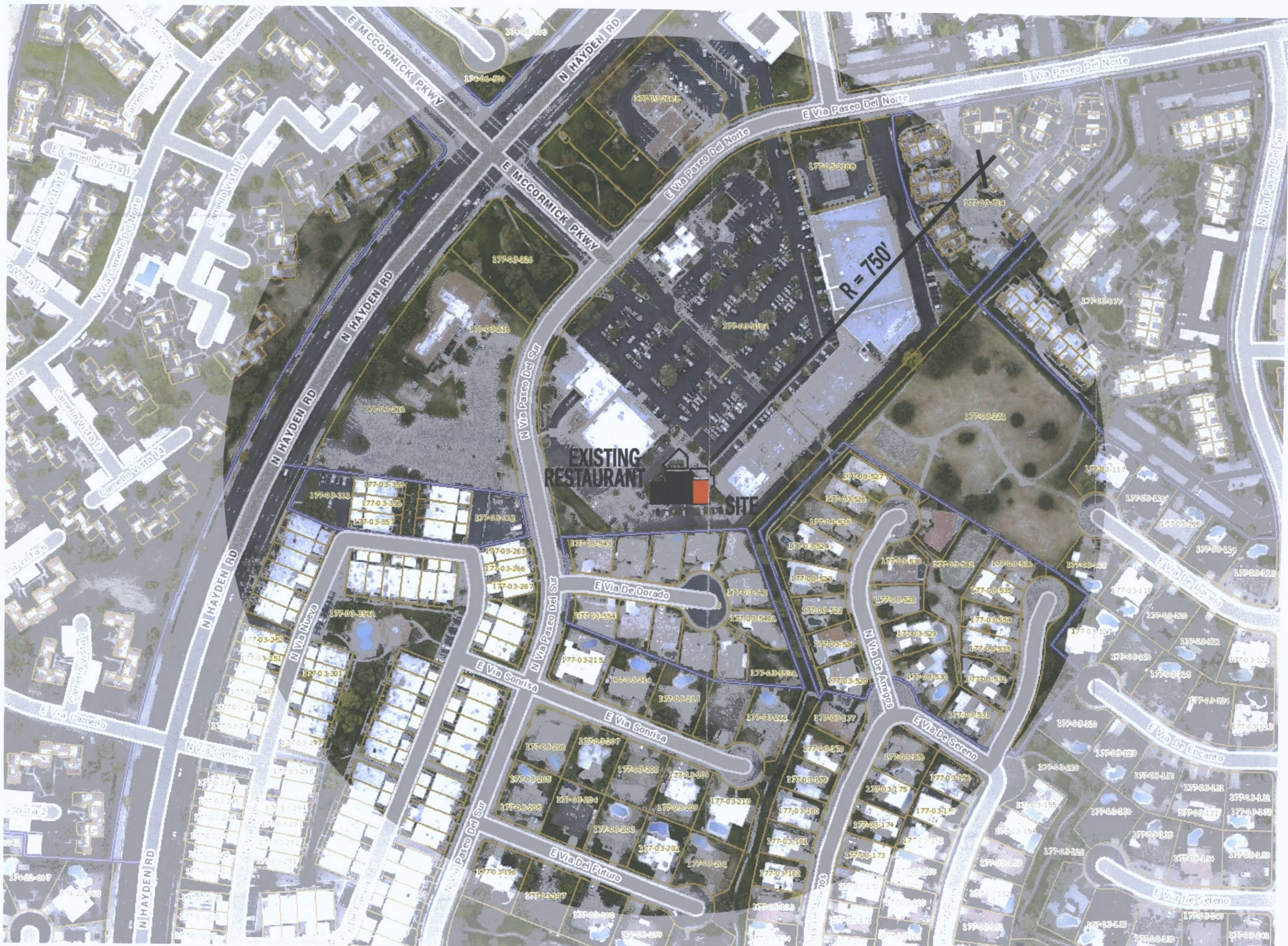
THE VIG

AT MCCORMICK RANCH
EXPANSION
SCOTTSDALE, ARIZONA

DEVELOPMENT REVIEW
**CONTEXT AERIAL
SITE PLAN**

PROJECT # 14024

2016 . 09 . 09



FOR: GENUINE CONCEPTS

THE VIG

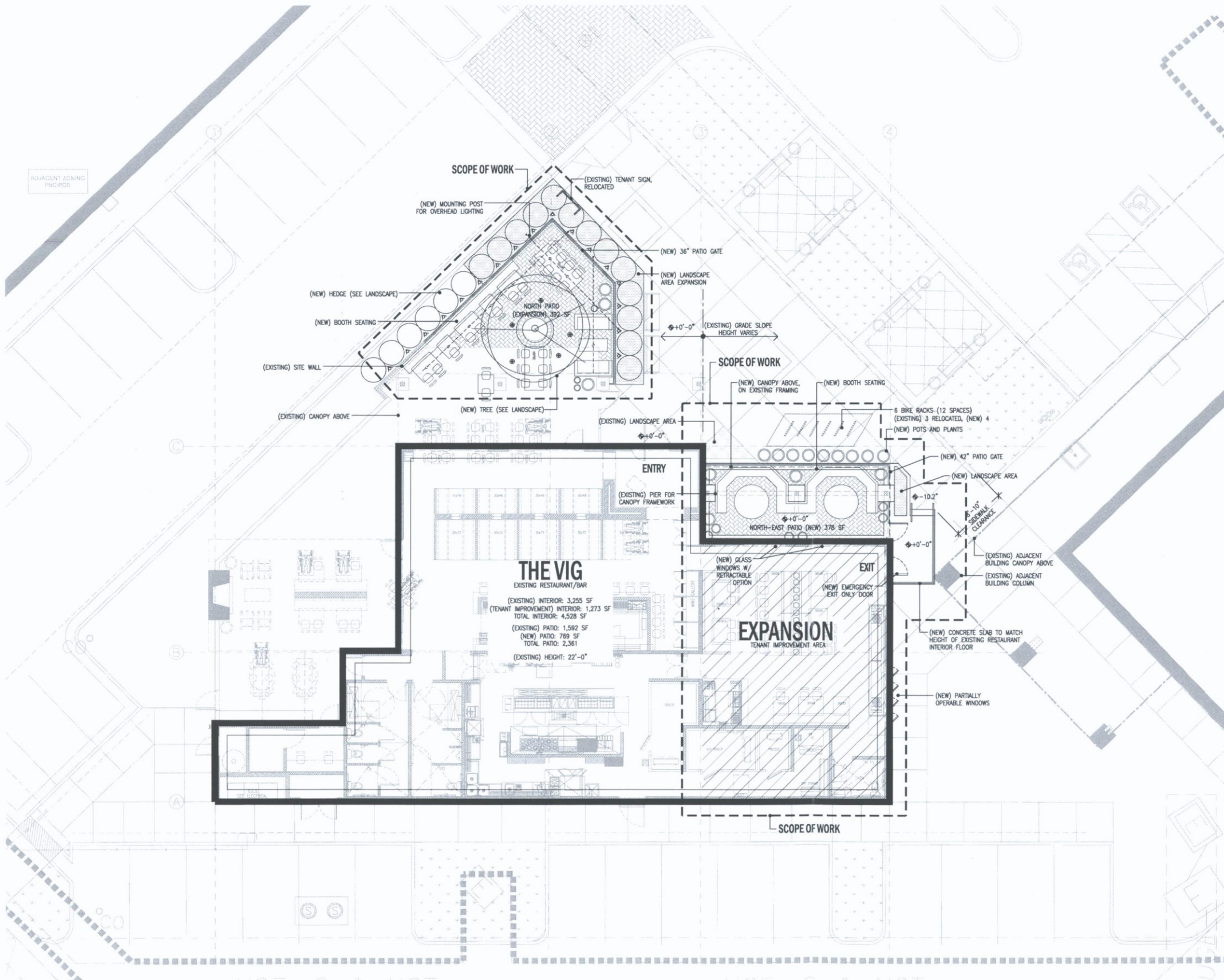
AT MCCORMICK RANCH
EXPANSION
SCOTTSDALE, ARIZONA



DEVELOPMENT REVIEW
**CONTEXT AERIAL
SITE PLAN**
PROJECT # 14024
2016 . 09 . 09



45-DR-2016
9/29/2016



PROJECT DATA

ZONING:	PNC/PCD
ADDRESS:	345 N. VA PASEO DEL SUR
APN:	177-03-218A
Q.S.:	23-47
BUILDING HEIGHT:	36 FT
ALLOWED:	22 FT
PROVIDED:	
BUILDING AREAS:	
EXISTING THE VIG:	3,255 SF
EXISTING EXPANSION:	1,273 SF
TOTAL BUILDING AREA:	4,528 SF
PATIO AREAS:	
EXISTING:	1,592 SF
EXPANSION:	769 SF
TOTAL PATIO AREA:	2,361 SF
PARKING REQUIRED:	
INTERIOR (4,528 SF/250):	18.1 SPACES
EXTERIOR PATIO (2,361 SF-200)/250:	8.65 SPACES
TOTAL REQUIRED:	27.2 SPACES
PARKING PROVIDED:	
ON SITE PARKING:	SEE MASTER SITE PLAN
BICYCLE PARKING:	
REQUIRED: (28 PARKING SPACES/10):	3 SPACES
PROVIDED:	12 SPACES

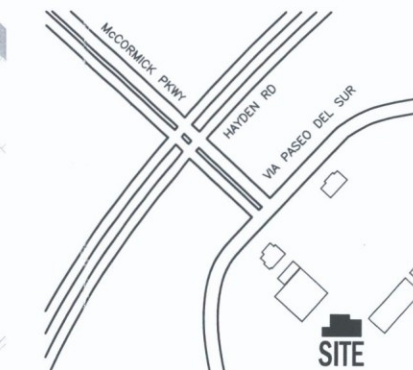
DIRECTORY

BUILDING OWNER:
DIVERSIFIED PARTNERS
7500 E. McDONALD DR
SCOTTSDALE, AZ 85250
ATTN: ALEXANDRA SCHLICHTER
ALEXANDRA@DPRE.COM

ARCHITECT:
AV3 DESIGN STUDIO
PO BOX 16792
PHOENIX, ARIZONA 85011
ATTN: ARTHUR A VIGIL III
602.326.3387
ARTIE@AV3DESIGNSTUDIO.COM

TENANT:
THE VIG
4041 N 40TH STREET
ATTN: TUCKER WOODBURY/
JIM RILEY

VICINITY MAP



FOR: GENUINE CONCEPTS
THE VIG
AT MCCORMICK RANCH
EXPANSION
SCOTTSDALE, AZ

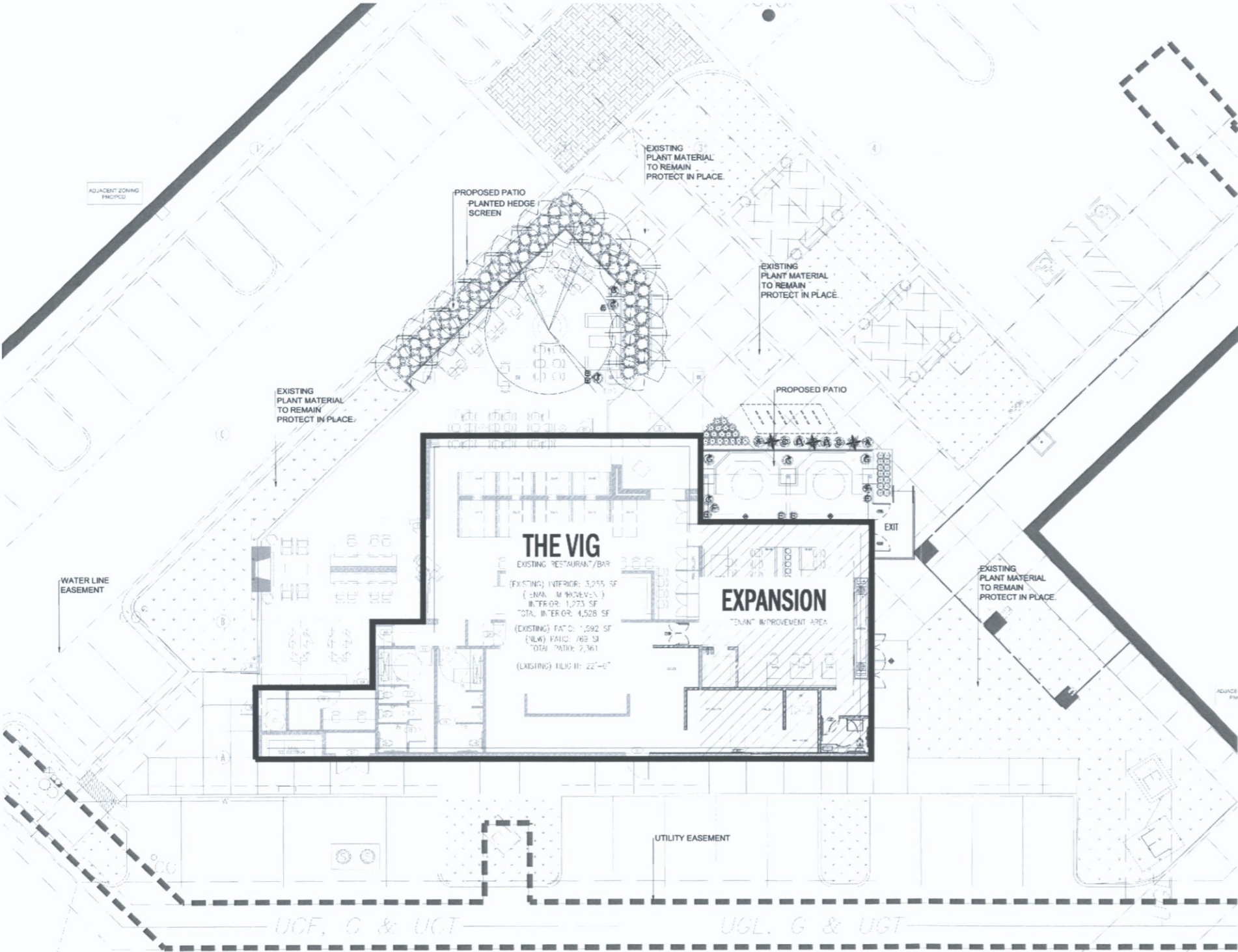


DESIGN REVIEW
SITE PLAN
PROJECT # 14024
2016 . 09 . 09

NORTH
SITE PLAN
SCALE: 1/8" = 1'-0"

© COPYRIGHT 2015
AV3
design studio

45-DR-2016
9/29/2016



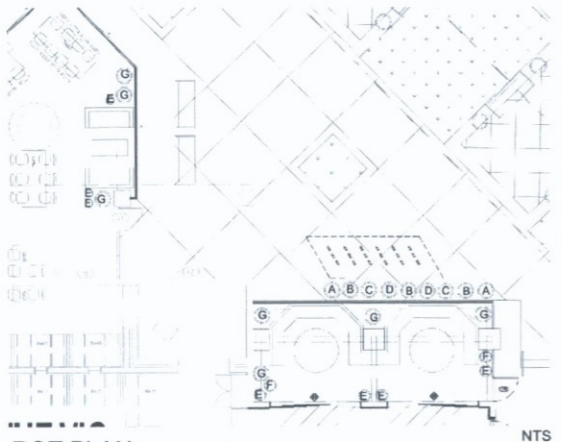
PLANT LEGEND

SYM.	BOTANICAL NAME (COMMON NAME)	SIZE	MIN. CAL HT & W	QTY.
TREES				
⊙	OLNEYA TESOTA IRONWOOD	66" BOX SINGLE TREE BY NIEL INC.	12" CAL. 20H X 15" W	1
<small>CONTRACTOR SHALL HAVE WRITTEN APPROVAL FROM OWNER PRIOR TO PURCHASE OF TREE. CONTRACTOR SHALL ALSO VERIFY TREE W/ LANDSCAPE ARCHITECT PRIOR TO PURCHASE.</small>				
⊙	SOPHORA SECUNDIFLORA TEXAS MOUNTAIN LAUREL	24" BOX	4H X 3" W 1" CAL. 5" O.C.	12
SHRUBS				
⊙	MYRTUS COMMUNIS COMMON MYRTLE	5 GAL.	3" O.C.	11
⊙	PLUMBAGO SCANDENS SUMMER SNOW		IN POTS	7
ACCENTS				
⊙	AGAVE DESAMETIANA SMOOTH AGAVE	15 GAL.	IN POTS	3
⊙	BERLANDIERA LYRATA CHOCOLATE FLOWER	5 GAL.	IN POTS	6
⊙	BULBINE FRUTESCENS TINY TANGERINE	5 GAL.	IN POTS	6
⊙	ECHINOCACTUS GRISONII GOLDEN BARREL CACTUS	5 GAL.	2" O.C.	14
⊙	HESPERALOE PARVIFLORA "PERLA BRAKELIGHTS" 21/29 CRIMSON YUCCA	5 GAL.		18
⊙	MUHLENBERGIA RIGENS DEER GRASS	5 GAL.	3" O.C.	64
⊙	PORTULACARIA AFRA ELEPHANT'S FOOT	1 GAL.	IN POTS	12
⊙	YUCCA PALLIDA PALE LEAF YUCCA	5 GAL.	IN POTS	7

TOPDRESS / DUST CONTROL

□ ALL NEW PLANTING AREAS SHALL RECEIVE A MIN. 2" DEPTH DECOMPOSED GRANITE TOPDRESS. COLOR TO MATCH EXISTING ON SITE. CONTRACTOR SHALL PROVIDE A SAMPLE BAG TO LANDSCAPE ARCHITECT OR OWNER'S REF. FOR APPROVAL PRIOR TO INSTALLATION.

- NOTES:**
1. ALL PLANT MATERIAL WITHIN THE SIGHT VISIBILITY TRIANGLES SHALL BE A MAXIMUM OF 24" IN HEIGHT PER MUNICIPAL CLEAR VISION REQUIREMENTS.
 2. ALL TREES SHALL COMPLY WITH THE LATEST AMENDED EDITION OF THE ARIZONA NURSERY ASSOCIATION RECOMMENDED TREE SPECIFICATIONS.
 3. TREES MUST MEET MINIMUM CALIPER, HEIGHTS, AND WIDTHS AS INDICATED ON PLANT LEGEND. BOX SIZES ARE FOR REFERENCE ONLY.
 4. ANY TREE AND/OR PLANT MATERIAL REMOVED FROM SITE SHALL BE RECYCLED-NO PLANT MATERIAL SHALL BE SENT TO A LANDFILL.
 5. ALL PLANTING SHALL BE IRRIGATED WITH AN AUTOMATIC DRIP IRRIGATION SYSTEM.



POT SCHEDULE

A.	ARTISAN SQUAT ROLLED RIM BY: SIBBERT & RICE	20" DIA. #1010
B.	VASO PLANTER BY: JACKSON POTTERY	20" DIA. #ADR-388
C.	DUNE PLANTER BY: KORNEGAY DESIGN	24" DIA. #DS-14
D.	CYLINDER POT BY: JACKSON POTTERY	17" DIA. #ADR-178
E.	VASO ORTENSIA ARTICLE BY: TUSCAN IMPORTS	24" DIA. #SB711C
F.	TALL CONE PLANTER BY: JACKSON POTTERY	14.0" DIA. #ADR-45
G.	VASO PALLA RIGATA BY: TUSCAN IMPORTS	14.0" DIA. #D407

NOTE: ALL POTS SHALL RECEIVE MIN. DEPTH 2" OF MEXICAN BEACH PEBBLES BY APACHE STONE (423) 581-7625. CONTRACTOR SHALL PROVIDE SAMPLE BAG TO LANDSCAPE ARCHITECT PRIOR TO INSTALLATION.

CONTACT INFO:
 TUSCAN IMPORTS: 843.667.9101
 JACKSON POTTERY: 1-877-533-7687
 SIBBERT & RICE: 1-973-467-8266
 KORNEGAY DESIGN: 1-877-252-6323

FOR: GENUINE CONCEPTS
THE VIG
 AT MCCORMICK RANCH
 EXPANSION
 SCOTTSDALE, ARIZONA

DEVELOPMENT REVIEW
LANDSCAPE PLAN
 PROJECT # 14024
 2016.09.09

40
 4809 E. Thistle Landing Dr.
 Suite 100
 Phoenix, AZ 85044
 P: 602-314-8304
 F: 602-412-3306
 48 design + lic



ONE DAY TAKE OFF
 (602) 263-1100
 1-800-STAKE-IT
 CENTRAL IRRIGATION, L.L.C.

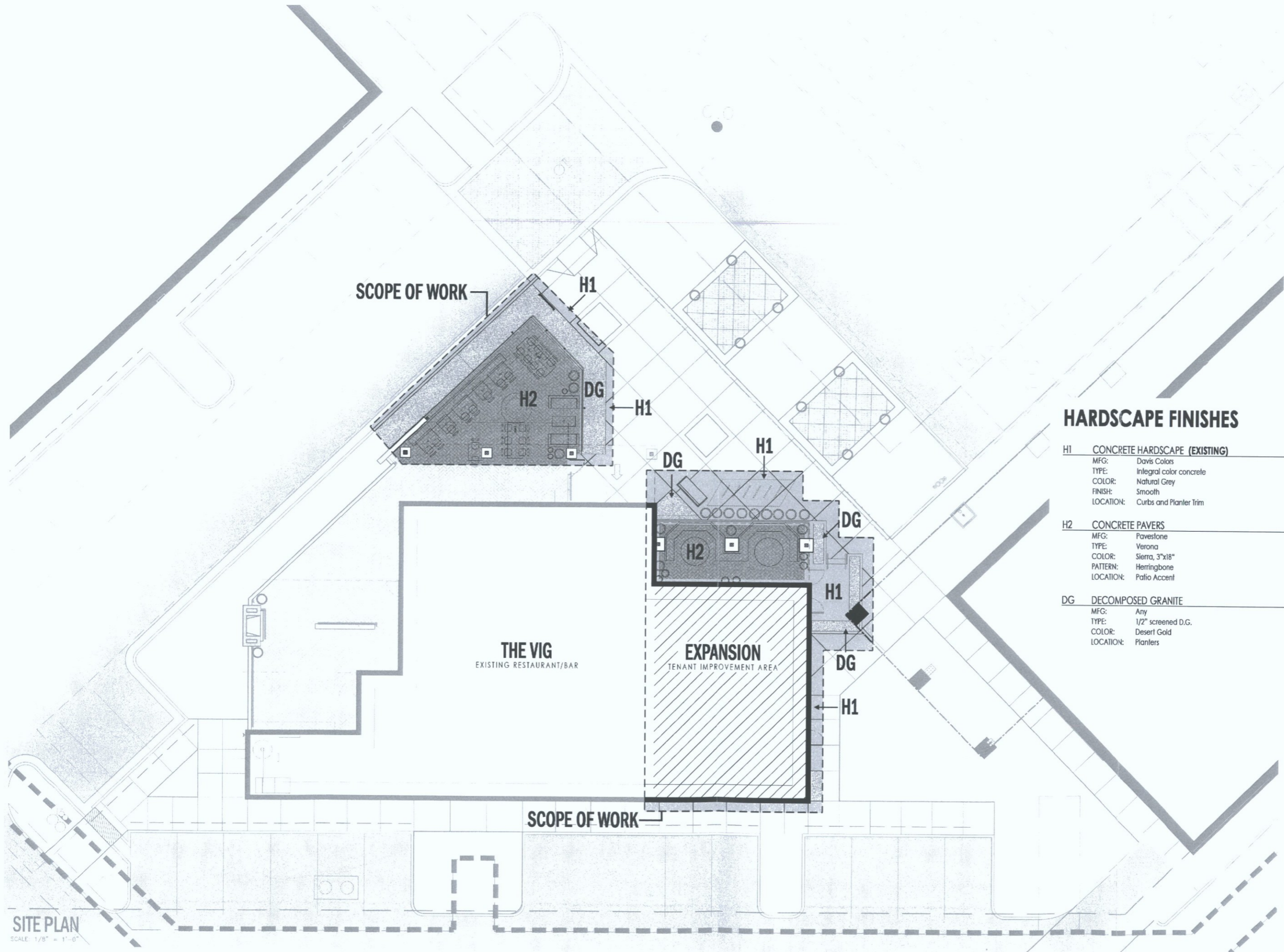
AV3
 design studio
 av3designstudio.com

45-DR-2016
 9/29/2016

FOR: GENUINE CONCEPTS

THE VIG

AT McCORMICK RANCH
EXPANSION
SCOTTSDALE, ARIZONA



HARDSCAPE FINISHES

H1	CONCRETE HARDSCAPE (EXISTING)
MFG:	Davis Colors
TYPE:	Integral color concrete
COLOR:	Natural Grey
FINISH:	Smooth
LOCATION:	Curbs and Planter Trim
H2	CONCRETE PAVERS
MFG:	Pavestone
TYPE:	Verona
COLOR:	Sierra, 3"x18"
PATTERN:	Herringbone
LOCATION:	Patio Accent
DG	DECOMPOSED GRANITE
MFG:	Any
TYPE:	1/2" screened D.G.
COLOR:	Desert Gold
LOCATION:	Planters



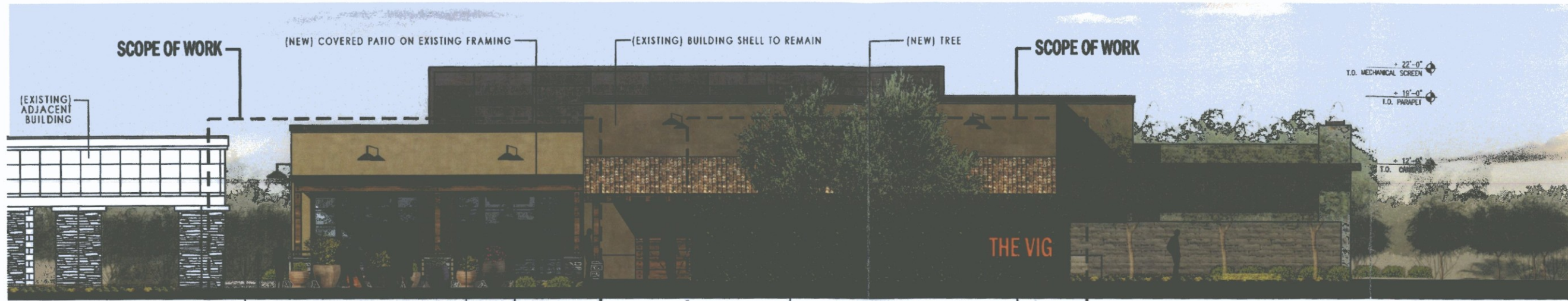
DEVELOPMENT REVIEW HARDSCAPE PLAN

PROJECT # 14024

2016 . 09 . 09



45-DR-2016
9/29/2016



NORTH ELEVATION
SCALE: 3/16" = 1'-0"



SOUTH ELEVATION
SCALE: 3/16" = 1'-0"



WEST ELEVATION
SCALE: 3/16" = 1'-0"



EAST ELEVATION
SCALE: 3/16" = 1'-0"

FOR: GENUINE CONCEPTS
THE VIG
AT MCCORMICK RANCH
EXPANSION
SCOTTSDALE, ARIZONA



DRB
EXTERIOR ELEVATIONS
PROJECT # 14024
2016 . 09 . 09

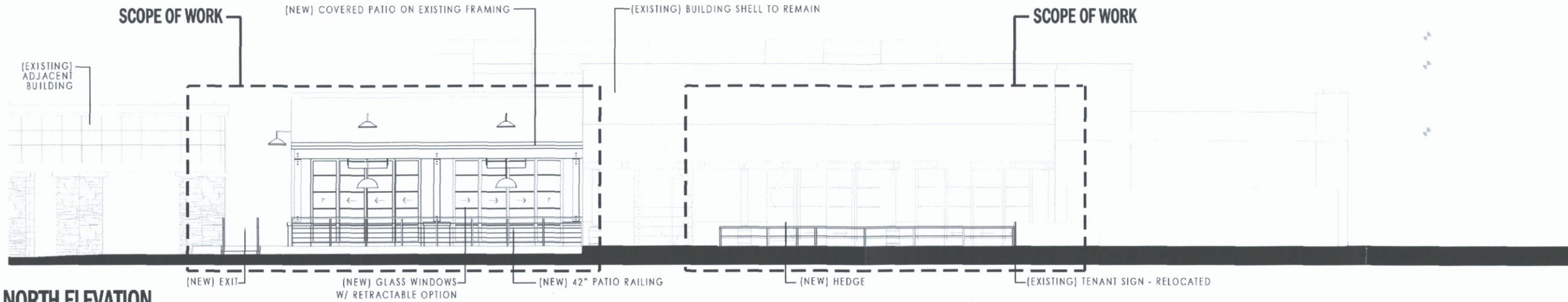


45-DR-2016
9/29/2016

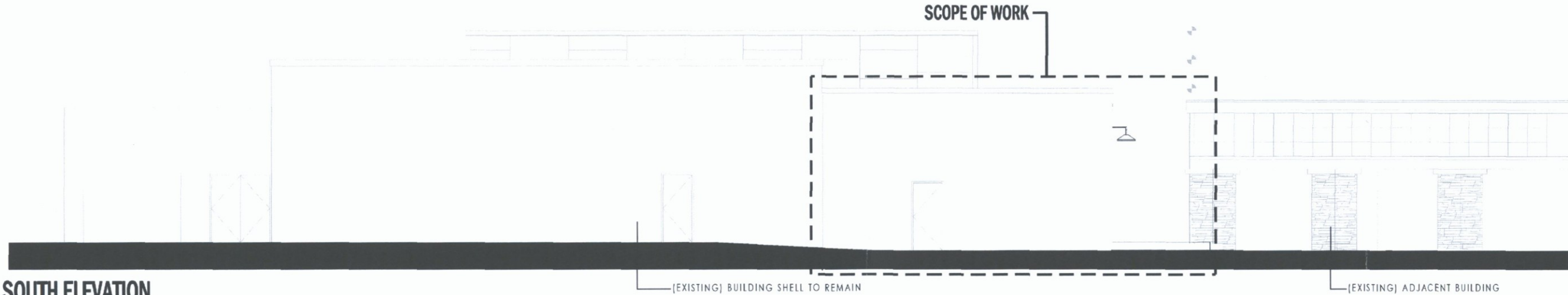
FOR: GENUINE CONCEPTS

THE VIG

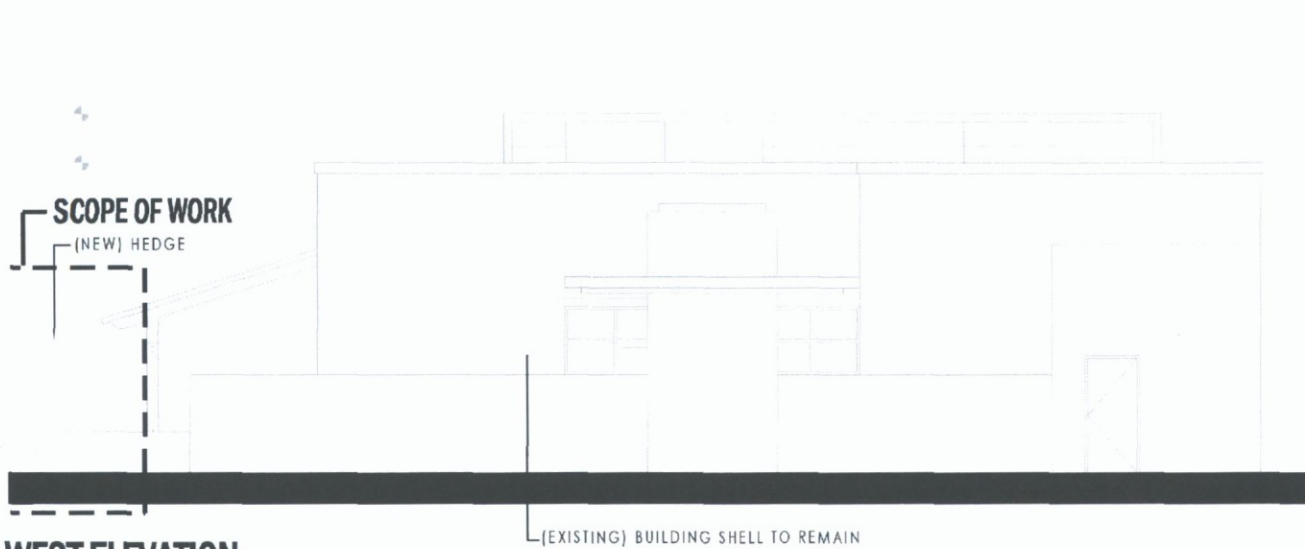
AT McCORMICK RANCH
EXPANSION
SCOTTSDALE, ARIZONA



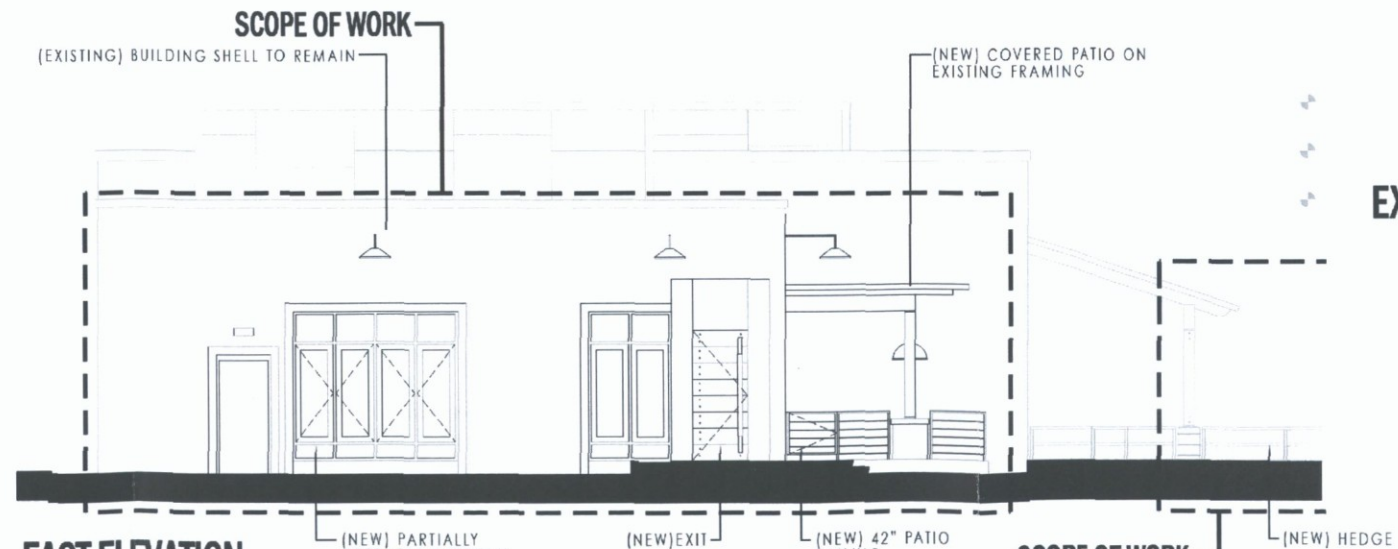
NORTH ELEVATION
SCALE: 3/16" = 1'-0"



SOUTH ELEVATION
SCALE: 3/16" = 1'-0"



WEST ELEVATION
SCALE: 3/16" = 1'-0"



EAST ELEVATION
SCALE: 3/16" = 1'-0"

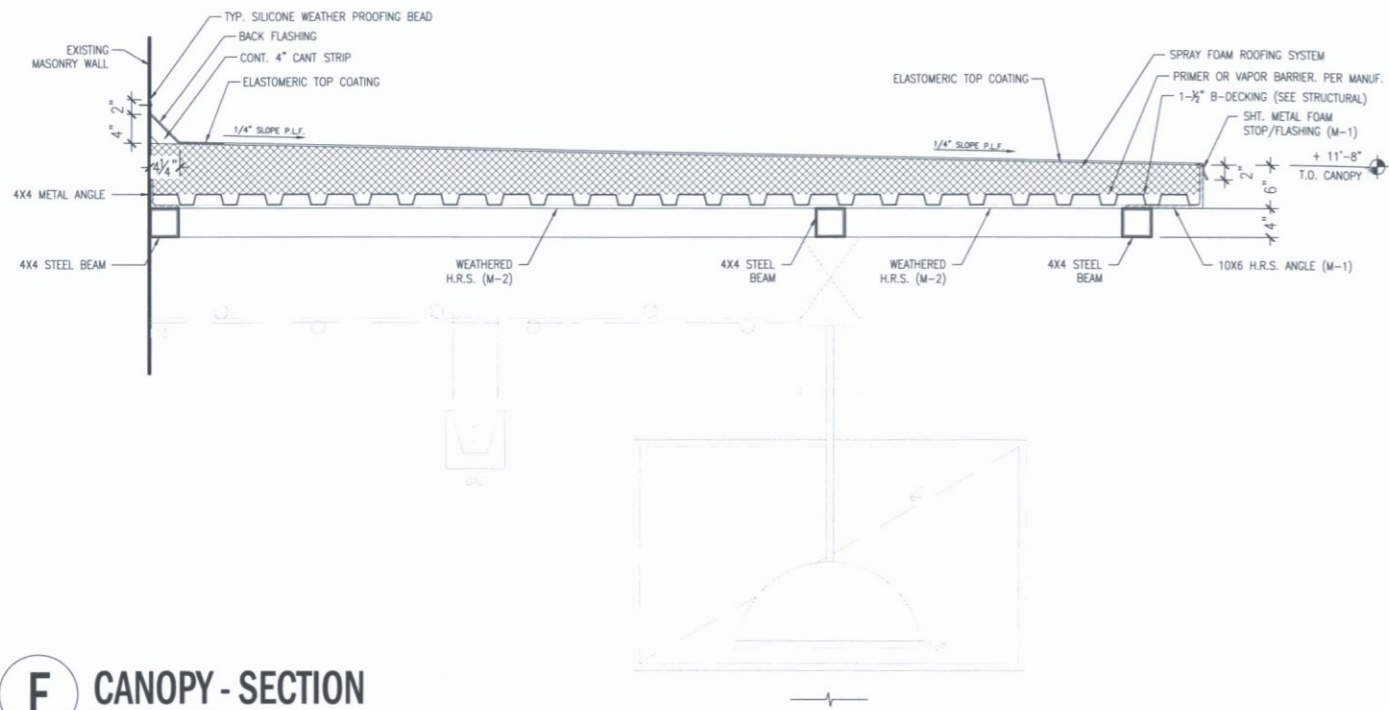


DRB EXTERIOR ELEVATIONS

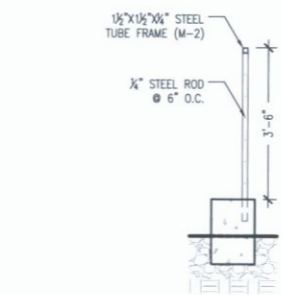
PROJECT # 14024
2016 . 09 . 09



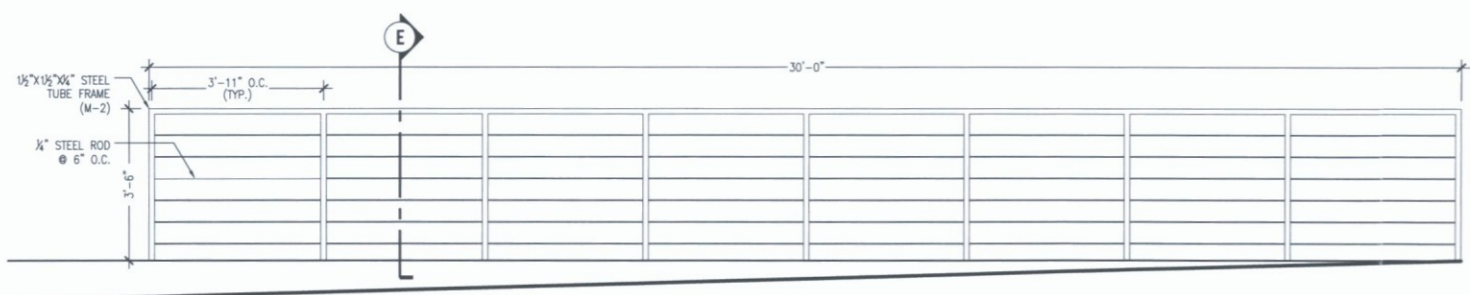
45-DR-2016
9/29/2016



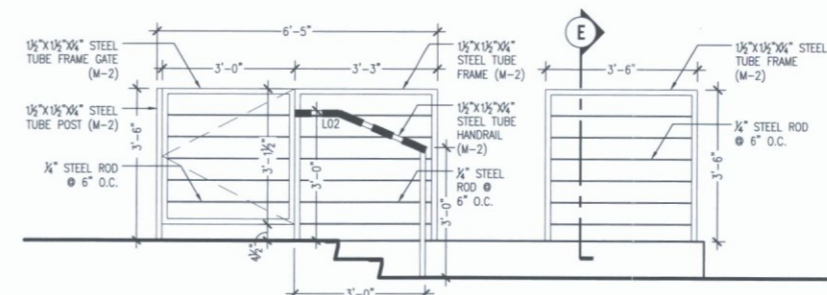
F CANOPY - SECTION
SCALE: 1" = 1'-0"



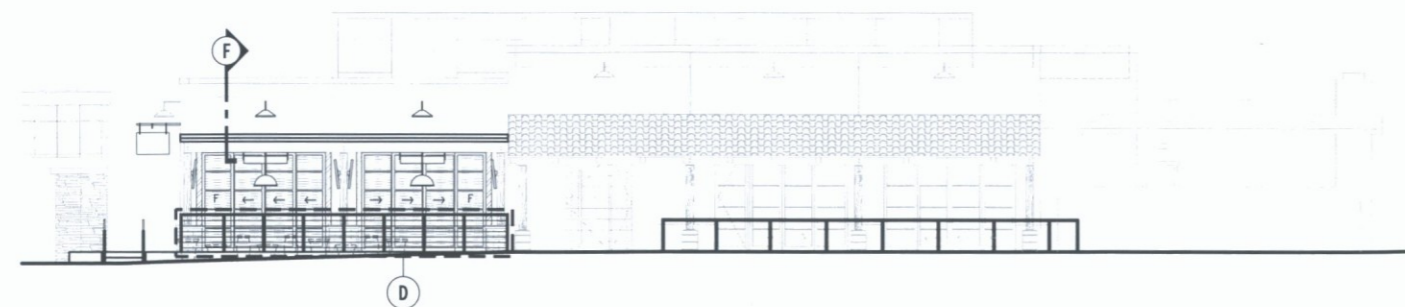
E SITE FENCE - SECTION
SCALE: 1/2" = 1'-0"



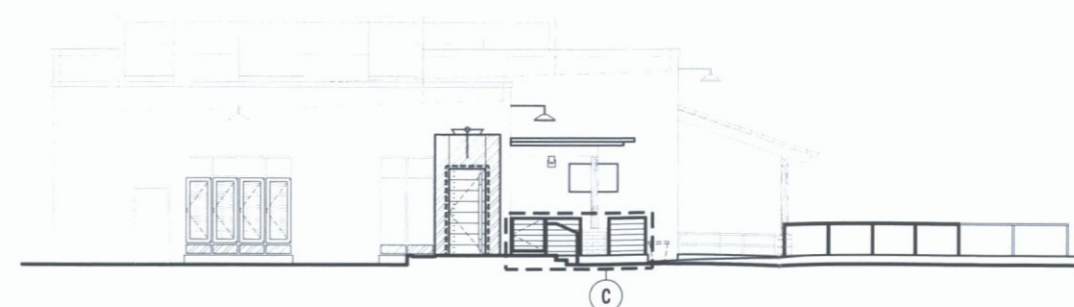
D SITE FENCE - NORTH ELEVATION
SCALE: 1/2" = 1'-0"



C SITE FENCE - EAST ELEVATION
SCALE: 1/2" = 1'-0"



B EAST ELEVATION
SCALE: 1/8" = 1'-0"



A NORTH ELEVATION
SCALE: 1/8" = 1'-0"

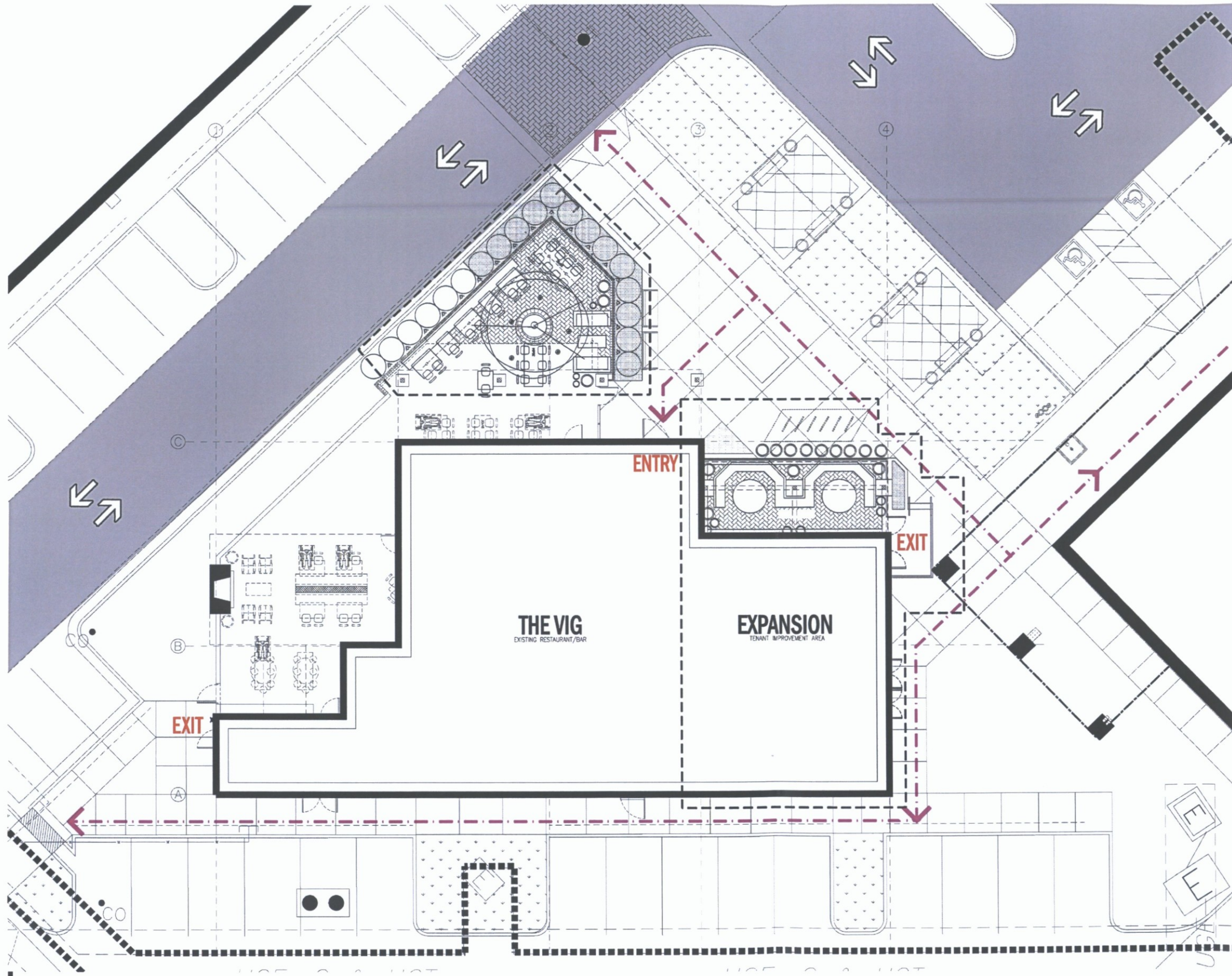
FOR: GENUINE CONCEPTS
THE VIG
AT MCCORMICK RANCH
EXPANSION
SCOTTSDALE, AZ



DESIGN REVIEW
SITE DETAILS
PROJECT # 14024
2016 . 09 . 09

© COPYRIGHT 2015
AV3
design studio

45-DR-2016
9/29/2016



SITE PLAN
 SCALE: 1/8" = 1'-0"

FOR: GENUINE CONCEPTS
THE VIG
 AT MCCORMICK RANCH
 EXPANSION
 SCOTTSDALE, ARIZONA

LEGEND

- PEDESTRIAN
- VEHICLE



DEVELOPMENT REVIEW
PEDESTRIAN & VEHICULAR CIRCULATION PLAN
 PROJECT # 14024
 2016 . 09 . 09



45-DR-2016
 9/29/2016

ARCHITECTURAL INSPIRED PHOTOS



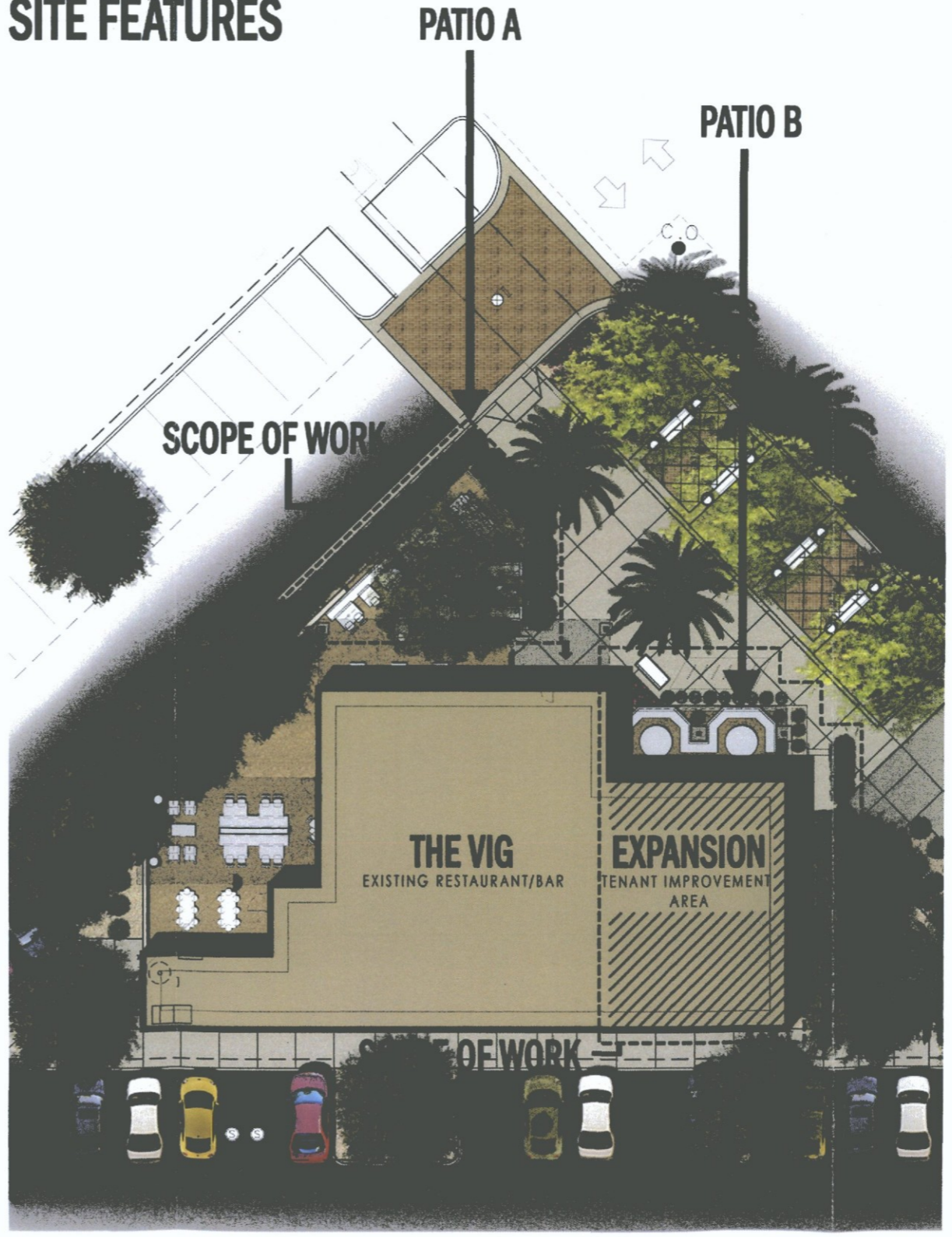
PATIO A



PATIO B



SITE FEATURES



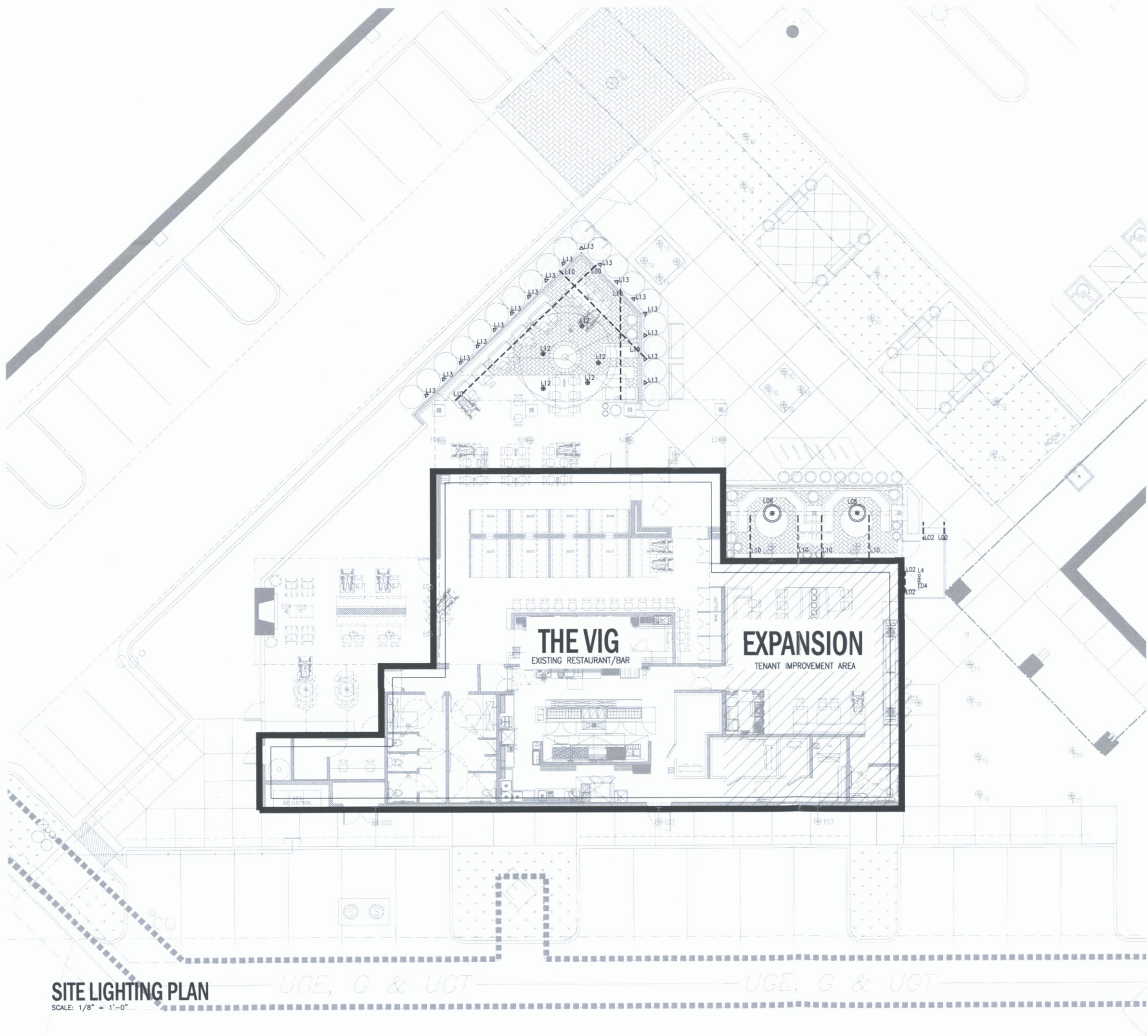
FOR: GENUINE CONCEPTS
THE VIG
 AT McCORMICK RANCH
 EXPANSION
 SCOTTSDALE, ARIZONA



DEVELOPMENT REVIEW
SENSITIVE DESIGN
CONCEPT PLAN
 PROJECT # 14024
 2016 . 09 . 09



45-DR-2016
 9/29/2016



KEY	NUMBER	ITEM
---	L02	TYPE: LED LIGHT STRIP MFG: LUMINI FIXTURE: LINELED 24V, LL30 COLOR/FINISH: AMBER & WARM WHITE
⊖	L04	TYPE: WALL SIGN LIGHT MFG: WINSCAPE FIXTURE: TAYLOR TWIN LED #QF-40 COLOR/FINISH: BLACK TEXTURED
⊙	L08	TYPE: PATIO PENDANT MFG: HUDSON GOODS FIXTURE: INDUSTRIAL LAB PENDANT COLOR/FINISH: POLISHED METAL
---	L10	TYPE: STRING LIGHTS MFG: SVAL FIXTURE: OUTDOOR LIGHT STRING COLOR/FINISH: BLACK
⊕	L12	TYPE: TREE LANTERN MFG: HK LIGHTING GROUP FIXTURE: ZK16 - HP COLOR/FINISH: BRONZE
△	L13	TYPE: DIRECTIONAL LANDSCAPE LIGHTING MFG: WINSCAPE FIXTURE: AS - ASPEN COLOR/FINISH: BRONZE

SITE LIGHTING PLAN

SCALE: 1/8" = 1'-0"

UGE, G & UGT

UGE, G & UGT



DESIGN REVIEW
SITE LIGHTING PLAN
 PROJECT # 14024
 2016 . 09 . 09

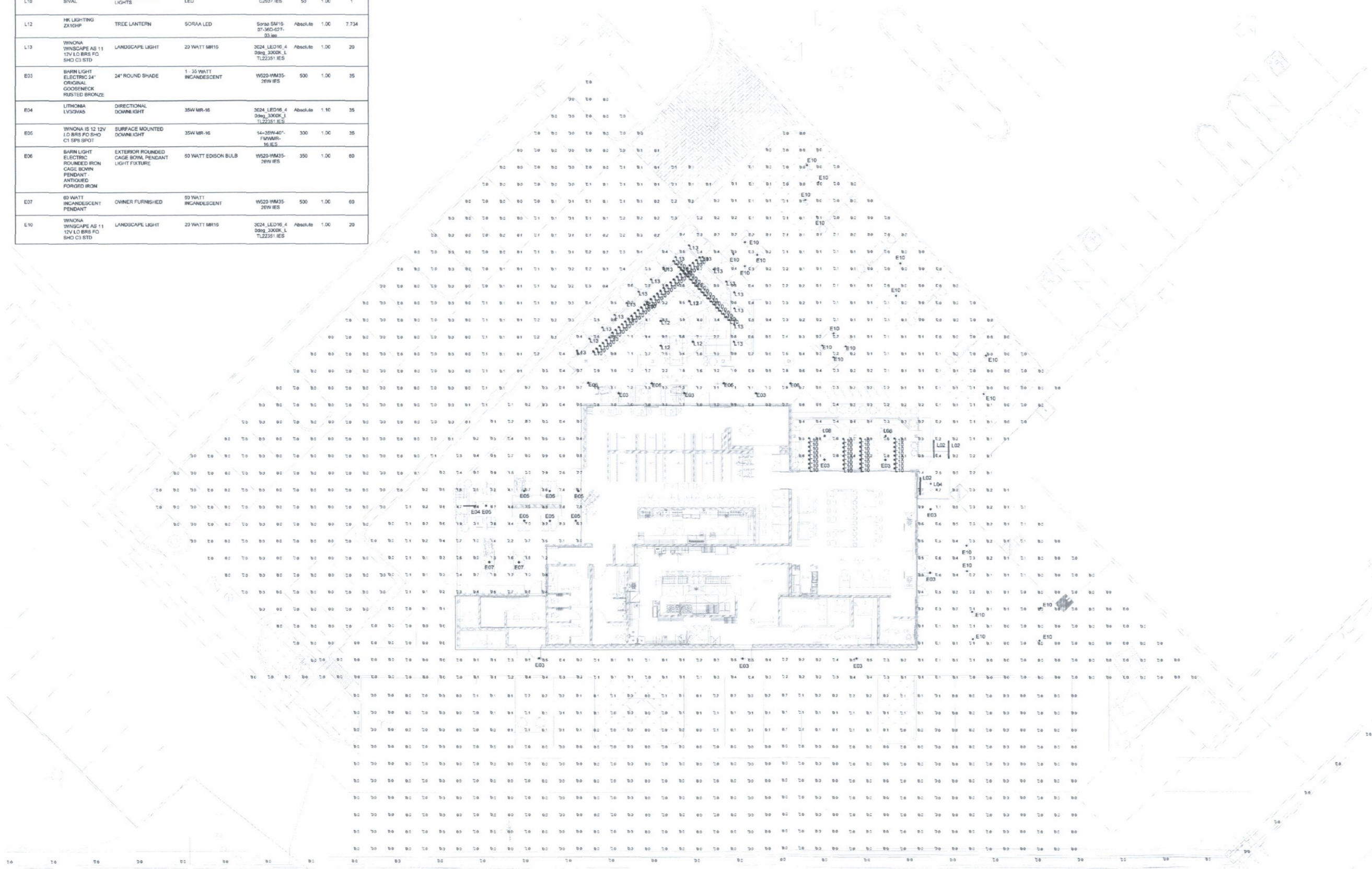
© COPYRIGHT 2015

AV3
 design studio

45-DR-2016
 9/29/2016

Label	Catalog Number	Description	Lamp	File	Lumens	LLF	Watts
L02	LUMINEL30-K	LED LINEAR STRIP	LED	LL30-K-2PK- WEB- RESNA3002 IE S	Absolute	1.00	10.2
L04	WINONA 1AT 1G24 12V L3 BKT FD SHD C3 STD	LED WALL SIGN LIGHT, REMOTE TRANSFORMER REQUIRED	LED	3G24_LED16_4 28sq_300K_L TL22351 IES	Absolute	1.00	6.84
L08	INDUSON GOODS INDUSTRIAL LAB PENDANT	PENDANT	INCANDESCENT	C2837 IES	50	1.00	40
L10	BIVAL	OUTDOOR STRING LIGHTS	LED	C2837 IES	50	1.00	1
L12	HK LIGHTING ZXTORP	TREE LANTERN	SORAA LED	Soraa SM16- 07-360-627- 23.9w	Absolute	1.00	7.734
L13	WINONA WNSCAPE AS 11 12V L3 BRS FD SHD C3 STD	LANDSCAPE LIGHT	20 WATT MR16	3G24_LED16_4 28sq_300K_L TL22351 IES	Absolute	1.00	20
E03	BARN LIGHT ELECTRIC 24" ORIGINAL GOODSNECK RUSTED BRONZE	24" ROUND SHADE	1 - 35 WATT INCANDESCENT	W520-VM35- 26W IES	500	1.00	35
E04	LITHONBA LV30VA5	DIRECTIONAL DOWNLIGHT	35W MR-16	3G24_LED16_4 28sq_300K_L TL22351 IES	Absolute	1.10	35
E05	WINONA IS 12 12V L3 BRS FD SHD C1 SRS BR01	SURFACE MOUNTED DOWNLIGHT	35W MR-16	14-35W40- FMWHR- 16 IES	300	1.00	35
E06	BARN LIGHT ELECTRIC ROUNDED IRON CAGE BOWN PENDANT ANTIQUE FORGED IRON	EXTERIOR ROUNDED CAGE BOWN PENDANT LIGHT FIXTURE	50 WATT EDISON BULB	W520-VM35- 26W IES	350	1.00	60
E07	60 WATT INCANDESCENT PENDANT	OWNER FURNISHED	60 WATT INCANDESCENT	W520-VM35- 26W IES	500	1.00	60
E10	WINONA WNSCAPE AS 11 12V L3 BRS FD SHD C3 STD	LANDSCAPE LIGHT	20 WATT MR16	3G24_LED16_4 28sq_300K_L TL22351 IES	Absolute	1.00	20

Description	Symbol	Avg	Max	Min	Max/Min	Avg/Min
BUILDING PERIMETER	+	0.7 fc	9.5 fc	0.3 fc	N/A	N/A
Parking by Walgreens	+	0.0 fc	0.4 fc	0.3 fc	N/A	N/A
SOUTH PARKING/DRIVE	+	0.0 fc	0.7 fc	0.3 fc	N/A	N/A
Vertical Light Spill at Property Line Measured at 5' AFG	+	0.0 fc	0.3 fc	0.3 fc	N/A	N/A



FOR: GENUINE CONCEPTS
THE VIG
 AT McCORMICK RANCH
 EXPANSION
 SCOTTSDALE, ARIZONA



DEVELOPMENT REVIEW
PHOTOMETRIC PLAN
 PROJECT # 14024
 2016 . 09 . 09



L10

Commercial-grade string lights, intermediate base, 100 ft, 75 sockets

SIVAL
Since 1985
RETAIL ONLY

Home | About | Contact Us | FAQs | Shipping | Log In | Wholesale Volume Pricing

Shop by Category

- 1151A, A18, A19 and G40 Light Bulbs (medium base)
- Battery Operated LED Light Strings
- C7 & C8 Christmas Light Bulbs
- C7 Light Strings and Sockets
- C8 Light Strings and Sockets
- Commercial Grade Patio Light String, INTERMEDIATE base sockets
- Commercial Grade Patio Light String, MEDIUM base sockets
- Fluorescent and Submersible Fixtures by Anchor
- Globe Party Lights, Pre-Assembled Globe Light Sets
- Globe Party Lights, Replacement Bulbs (G40, G41, G50)
- Indoor Lights
- LED C7, LED G4, LED G40 and LED G41 Christmas Lights
- LED G4 Sign Bulbs and LED G40 Bulbs (G77 medium base)
- LED String Lights
- Mini Lights
- Mounting & Installation Clips
- Nail Caps
- Party Light Bulbs
- Party Lights and Wedding Lights
- Plug, Sockets and Accessories
- Sign Bulbs
- T3 and T5 Bulbs

Light bulbs sold separately

Item Number: **L091000KP**
Socket Size: **Intermediate (E-17, G4)**
Quantity: [Add to Cart](#)

3 people like this. Be the first to write a review.

[Email this item to a friend](#)

Product Description:

Length of String: 100 ft. (lighted length is 94 ft.)	Compatible Bulbs: G40, T3, G40, T5, G40, T5, G40, T5, LED G40
Lead: 6 ft.	Wire Color: Black Only
Sockets Per String: 75	Plug: Male Plug Only (not end-to-end connectable)
Socket Type: Intermediate E-17 Base	Maximum Run: 750 Watts (Maximum of 10W per socket)
Socket Spacing: 18"	Wire Gauge: 16 AWG SPT-2 Wire
Bulb(s) Included: No (light bulbs sold separately)	Suspended Sockets: No

Search Site

- One of our more popular outdoor light strings, heavy-duty light strings ideal for lighting patios, weddings, pergolas and backyards.
- High-quality, commercial-grade light strings have PVC encapsulated sockets with brass inserts/contacts are resistant to UV sunlight exposure.
- Soft socket tips are designed to ensure a weather-resistant seal around bulbs.
- Indoor and outdoor use.

Find us on Facebook

We accept these credit cards:

For shipping information, please click here.

L10



SHADE: SMITH & HAWKENS

FOR: GENUINE CONCEPTS

THE VIG

AT McCORMICK RANCH
EXPANSION
SCOTTSDALE, ARIZONA

HK USA Lighting Group

ZX16-HP
Hanging / ZX16-H Series

PROJECT: _____

REQUIRE TYPE: **L12**

Characteristics

- Listed
- Socket compatible

Technical Data

Material: Housing: polycarbonate; Mechanic: silicone; Magnet: aluminum alloy; Sockets: brass; Cord: PVC	Series: ZX16-HP
Lamp: Halogen MR16, 50W, MR16	Voltage: 12V
Socket: Bi-pin G4, G5.3, G5.35	Wattage: 50W
Voltage: 12V	
Wattage: 50W	

Ordering Guide

Series: ZX16-HP	Finish: BK (black), BK (chrome), BK (white), BK (brushed), BK (polished), BK (brushed chrome), BK (brushed nickel), BK (brushed stainless steel)
------------------------	---------------------------------------------------------------------------------------------------------------------------------------------------------

Material: Housing: polycarbonate; Mechanic: silicone; Magnet: aluminum alloy; Sockets: brass; Cord: PVC

Lamp: Halogen MR16, 50W, MR16

Socket: Bi-pin G4, G5.3, G5.35

Voltage: 12V

Wattage: 50W

Finish: BK (black), BK (chrome), BK (white), BK (brushed), BK (polished), BK (brushed chrome), BK (brushed nickel), BK (brushed stainless steel)

General: This fixture requires 12V transformer to function properly. Transformer must be purchased separately (see Accessories section on our website). Mounting must be specified separately. All lamps listed are 12V MR16; unless otherwise noted. When using a cover filter with a 50W lamp, a dichroic filter is required to retain full beam (RED, GREEN, and MEDIAN BLUE). Some UV, etc. filters apply when used with Power Vision® G4 styles A, C, and D (contact factory for details). Available with 35W optional fixture.

MOUNTING OPTIONS:

- GROUND MOUNT
- WALL MOUNT
- TREE MOUNT
- SURFACE MOUNT
- MODIFIED STANDARD

NOTE: See Accessories section on our website for mounting options.

UL Listed for location: Outdoor 200-50W Indoor = 25W

UL Listed for location: Indoor = 25W

WINONA Lighting • 2000 19th Street • Winona, MN 55901 • 507-263-4291 • www.winonalighting.com

WINSCAPE™ Project

Aspen • 12V MR 16

L13 Qty. _____ Type: _____

AS SERIES

0 = 12V 1200P	20 = 12V 1200P
10 = 12V 1200P	30 = 12V 1200P
11 = 12V 1200P	40 = 12V 1200P
12 = 12V 1200P	50 = 12V 1200P
13 = 12V 1200P	60 = 12V 1200P
14 = 12V 1200P	70 = 12V 1200P
15 = 12V 1200P	80 = 12V 1200P
16 = 12V 1200P	90 = 12V 1200P
17 = 12V 1200P	100 = 12V 1200P
18 = 12V 1200P	110 = 12V 1200P
19 = 12V 1200P	120 = 12V 1200P

12V VOLTAGE

10 = 12V 1200P	11 = 12V 1200P
12 = 12V 1200P	13 = 12V 1200P

ACCESSORY LINE

01 = BLACK FINISH	02 = BRUSHED CHROME
03 = BRUSHED NICKEL	04 = BRUSHED STAINLESS
05 = BRUSHED CHROME	06 = BRUSHED STAINLESS
07 = BRUSHED CHROME	08 = BRUSHED STAINLESS
09 = BRUSHED CHROME	10 = BRUSHED STAINLESS
11 = BRUSHED CHROME	12 = BRUSHED STAINLESS
13 = BRUSHED CHROME	14 = BRUSHED STAINLESS
15 = BRUSHED CHROME	16 = BRUSHED STAINLESS
17 = BRUSHED CHROME	18 = BRUSHED STAINLESS
19 = BRUSHED CHROME	20 = BRUSHED STAINLESS

FINISH

00 = NONE	01 = GREEN
02 = BRUSHED CHROME	03 = BRUSHED STAINLESS
04 = BRUSHED CHROME	05 = BRUSHED STAINLESS
06 = BRUSHED CHROME	07 = BRUSHED STAINLESS
08 = BRUSHED CHROME	09 = BRUSHED STAINLESS
09 = BRUSHED CHROME	10 = BRUSHED STAINLESS

COVER FINISH

00 = NONE	01 = GREEN
02 = BRUSHED CHROME	03 = BRUSHED STAINLESS
04 = BRUSHED CHROME	05 = BRUSHED STAINLESS
06 = BRUSHED CHROME	07 = BRUSHED STAINLESS
08 = BRUSHED CHROME	09 = BRUSHED STAINLESS
09 = BRUSHED CHROME	10 = BRUSHED STAINLESS

DRILLING

01 = 1/2" DRILL	02 = 3/4" DRILL
03 = 1/2" DRILL	04 = 3/4" DRILL

CAP ST. HUB

01 = 1/2" DRILL	02 = 3/4" DRILL
03 = 1/2" DRILL	04 = 3/4" DRILL

SPRINKLER

01 = 1/2" DRILL	02 = 3/4" DRILL
03 = 1/2" DRILL	04 = 3/4" DRILL

Modification: _____
Preparation: _____
(if needed)

Note: Please Lightkeeper for light to make design decisions without prior notice.

MOUNTING OPTIONS:

- GROUND MOUNT
- WALL MOUNT
- TREE MOUNT
- SURFACE MOUNT
- MODIFIED STANDARD

NOTE: See Accessories section on our website for mounting options.

UL Listed for location: Outdoor 200-50W Indoor = 25W

WINONA Lighting • 2000 19th Street • Winona, MN 55901 • 507-263-4291 • www.winonalighting.com



DEVELOPMENT REVIEW
LIGHTING CUTSHEETS
PROJECT # 14024
2016.09.09



45-DR-2016
9/29/2016