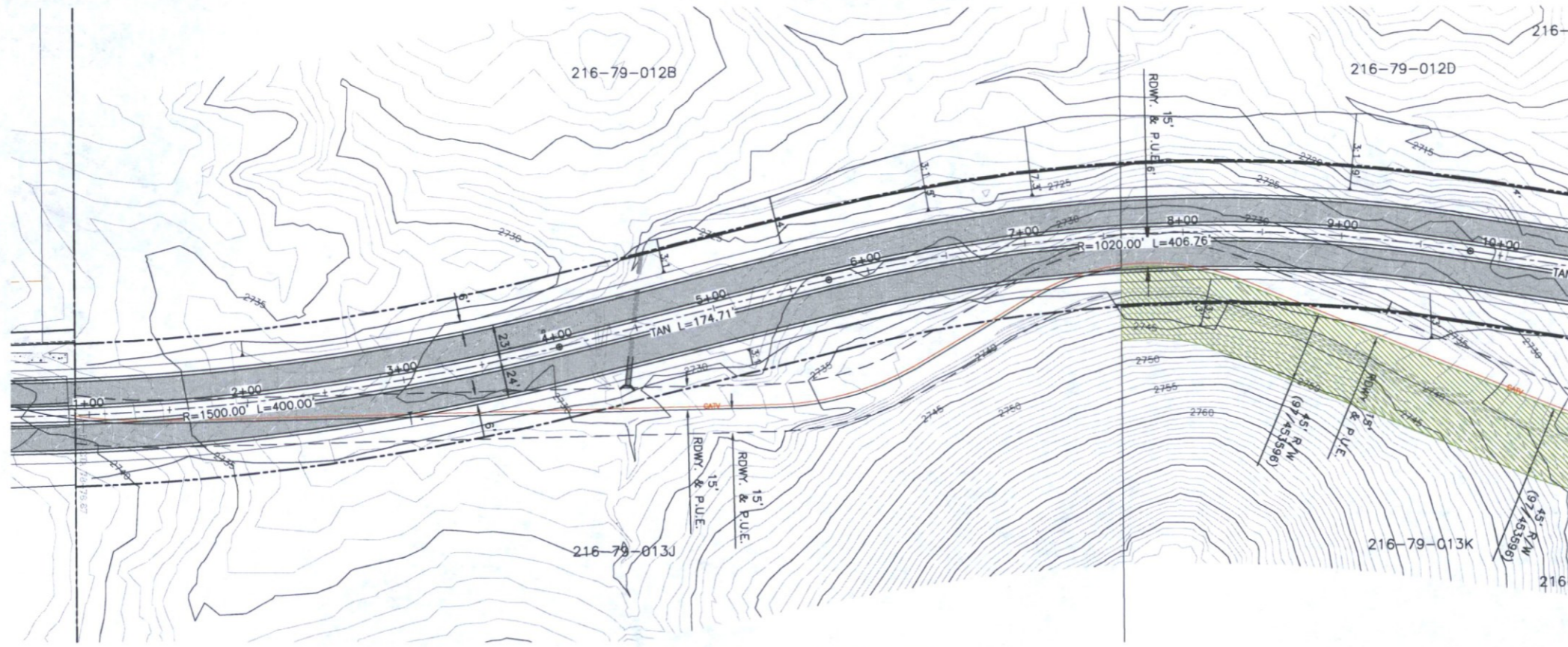


**Simulations**  
**Photos**  
**All Graphics (no plans)**

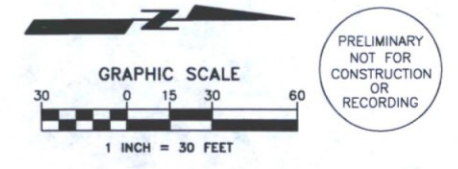
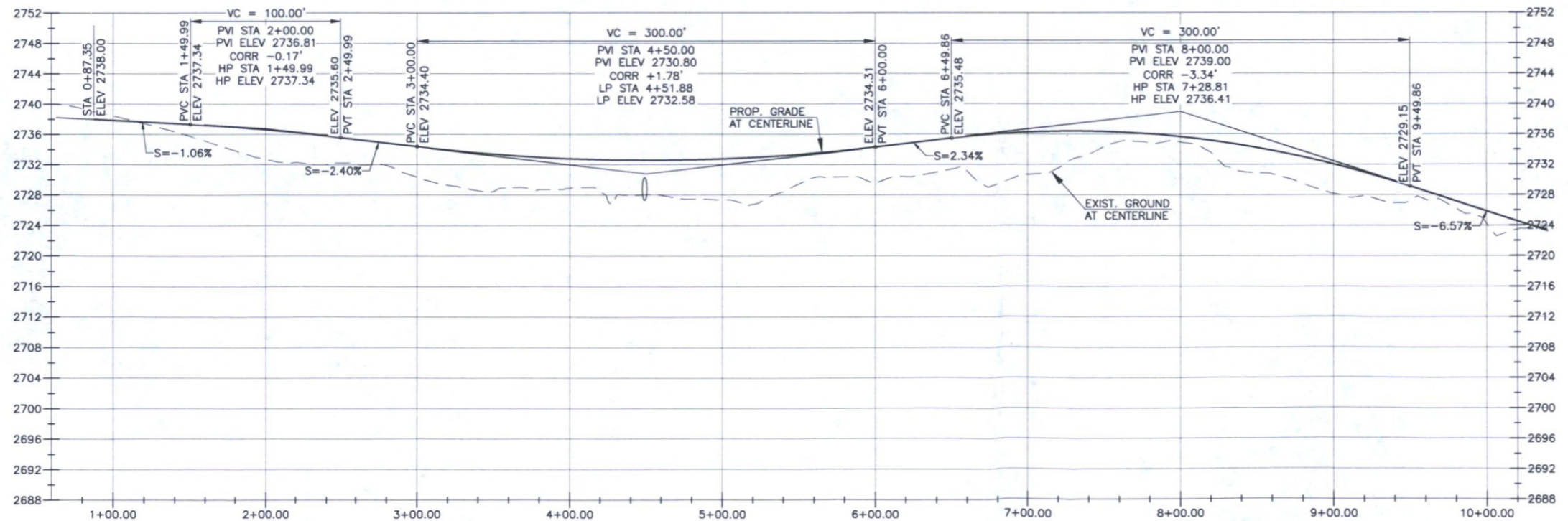
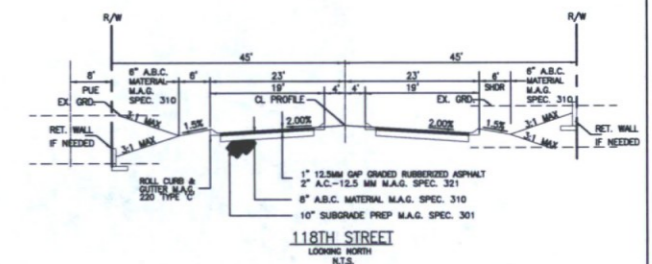




- LEGEND**
- PROPOSED CENTERLINE
  - ===== PROPOSED CURB
  - PROPOSED EDGE OF PAVEMENT
  - ===== PROPOSED STORM DRAIN
  - ===== PROPOSED RETAINING WALL
  - ===== PROPOSED PAVEMENT
  - ===== EXISTING RECORDED R.O.W.

NOTE: POTENTIAL DRAINAGE EASEMENTS MAY BE REQUIRED PARALLEL TO RIGHT OF WAY NEAR FUTURE CULVERT CROSSINGS. EASEMENTS TO BE QUANTIFIED DURING FINAL DESIGN.

**118TH STREET**



REVIEWED BY:  
 J2 engineering and environmental design  
 4649 east cotton gin loop, suite B2  
 phoenix, arizona 85040  
 phone: 602.438.2221  
 www.j2design.us

**ARGUS CONSULTING**  
 A CIVIL ENGINEERING COMPANY, P.C.  
 10115 E. Bell Road, Suite 107 - #104  
 Scottsdale, Arizona 85260 480-596-1131

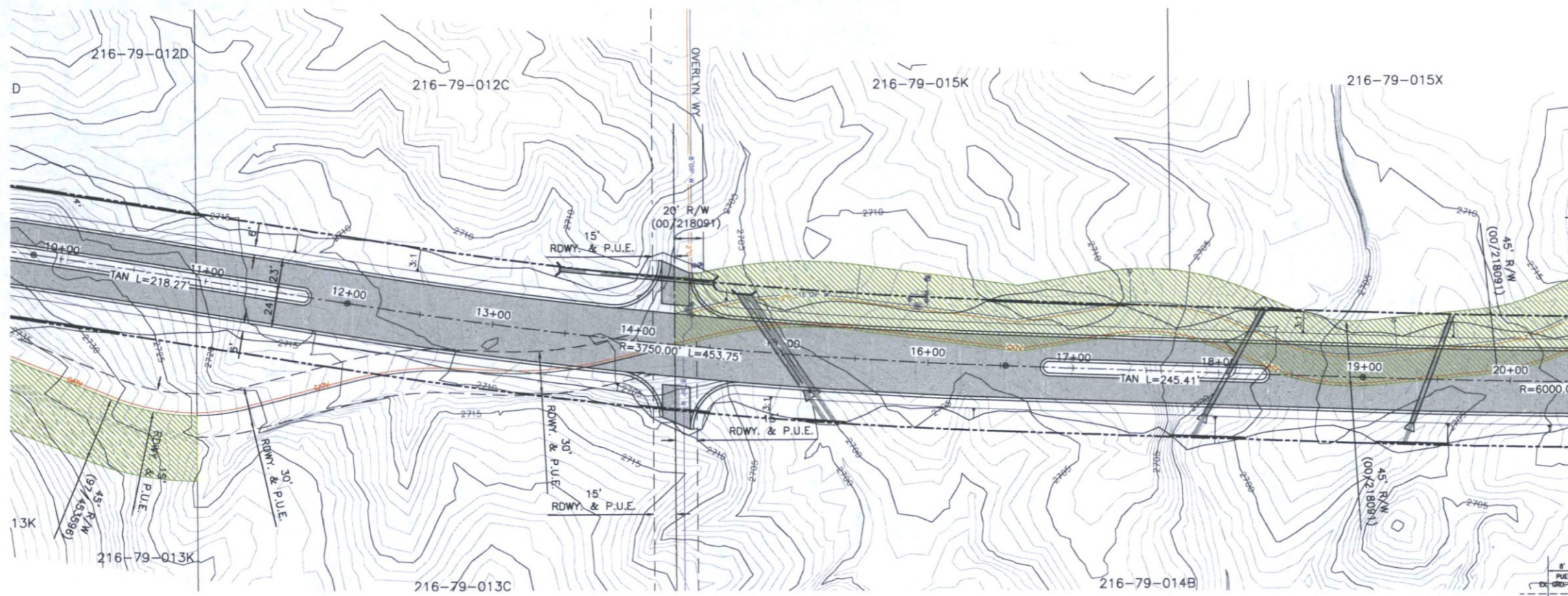
**118th STREET & JOMAX ROAD**  
 118TH STREET EXTENSION  
 ALIGNMENT STUDY

Designed by \_\_\_\_\_ Drawn by \_\_\_\_\_  
 Date 01-19-17 Job No. 365-16 Sheet 1 of 3

C:\Data\118th & Jomax\118th\_Extension\118th\_Extension\118th\_Roadway Layout.dwg Jan 19, 2017 Argus

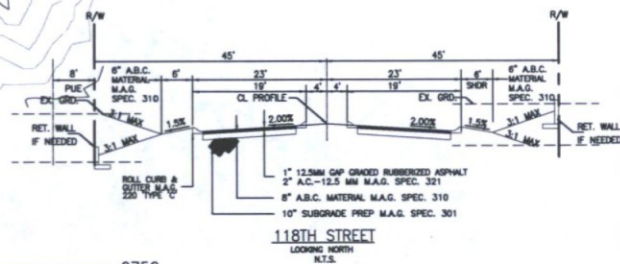
Q.S. 50-56



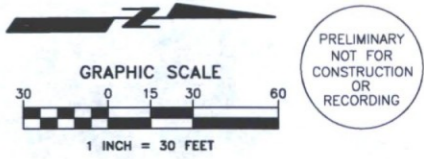
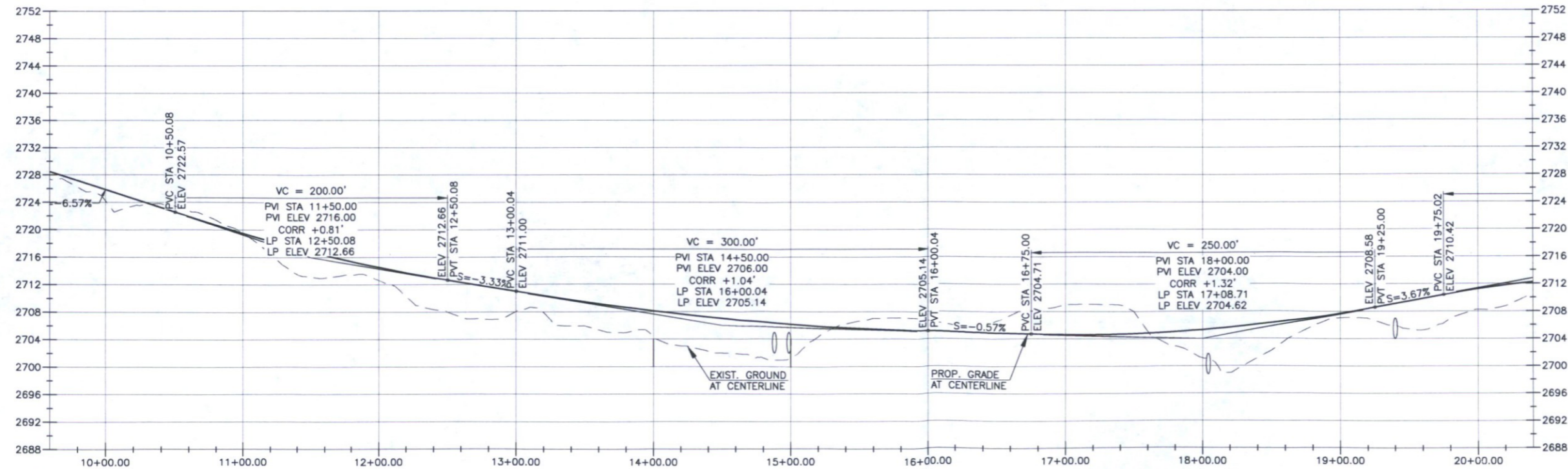


- LEGEND**
- PROPOSED CENTERLINE
  - ==== PROPOSED CURB
  - PROPOSED EDGE OF PAVEMENT
  - PROPOSED STORM DRAIN
  - PROPOSED RETAINING WALL
  - PROPOSED PAVEMENT
  - ▨ EXISTING RECORDED R.O.W.

NOTE: POTENTIAL DRAINAGE EASEMENTS MAY BE REQUIRED PARALLEL TO RIGHT OF WAY NEAR FUTURE CULVERT CROSSINGS. EASEMENTS TO BE QUANTIFIED DURING FINAL DESIGN.



**118TH STREET**



REVIEWED BY:  J2 engineering and environmental design  
4649 east cotton gin loop, suite B2  
phoenix, arizona 85040  
phone: 602.438.2221  
www.j2design.us

**ARGUS CONSULTING**  
A CIVIL ENGINEERING COMPANY, P.C.  
10115 E. Bell Road, Suite 107 - #104  
Scottsdale, Arizona 85260 480-596-1131

**118th STREET & JOMAX ROAD**

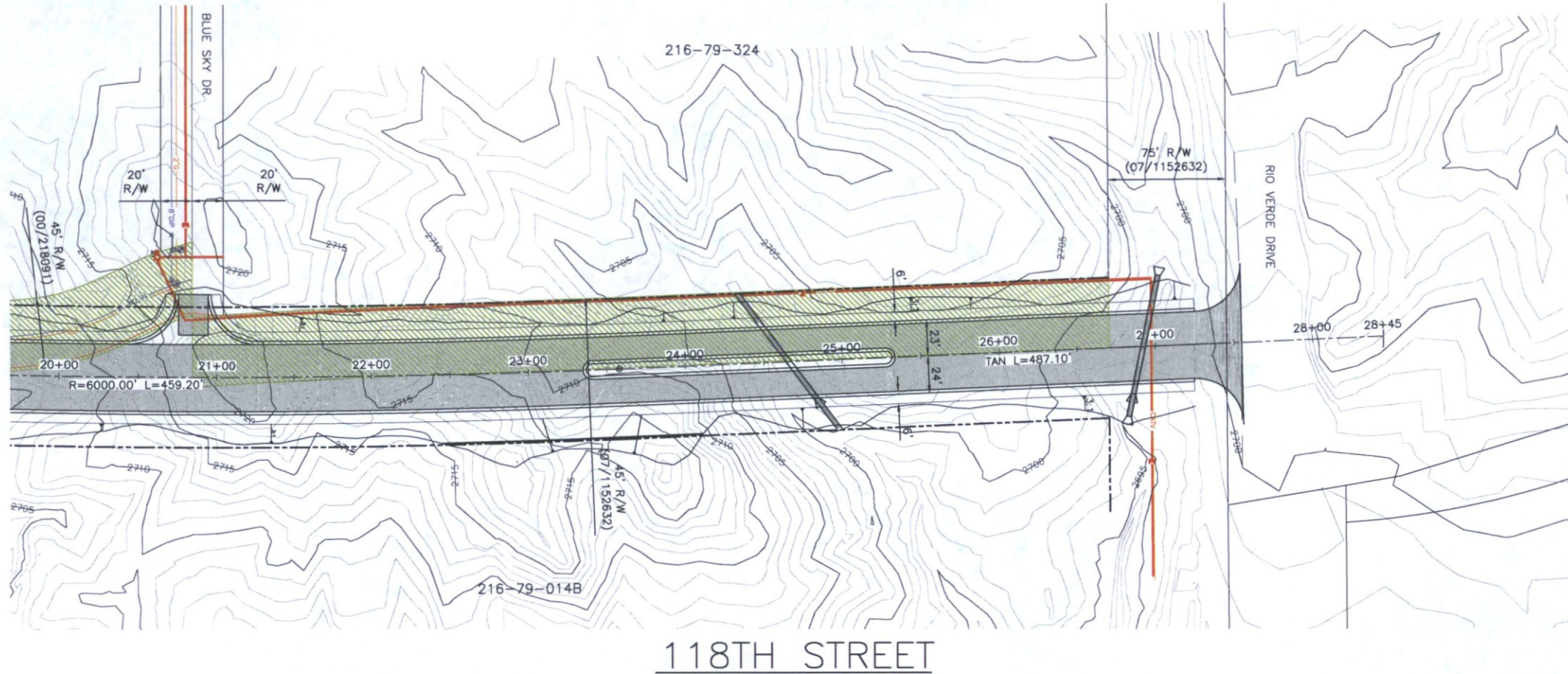
**118TH STREET EXTENSION  
ALIGNMENT STUDY**

Designed by \_\_\_\_\_ Drawn by \_\_\_\_\_  
Date 01-18-17 Job No. 365-16 Sheet 2 of 3

C:\Data\118th & Jomax\118th\_Extension\J2\_Roadway\_Layout.dwg Jan 19, 2017 Argus

Q.S. 50-56

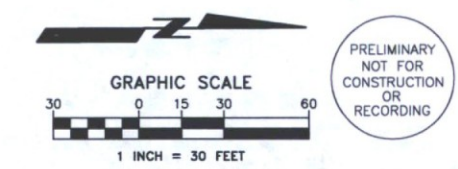
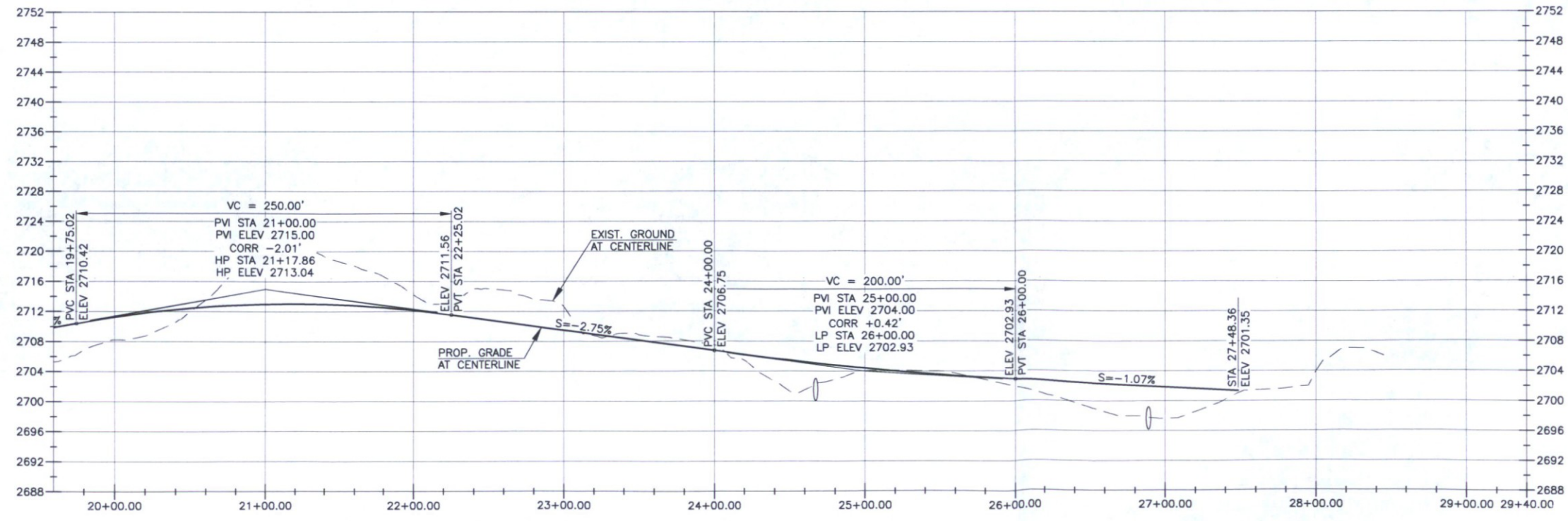
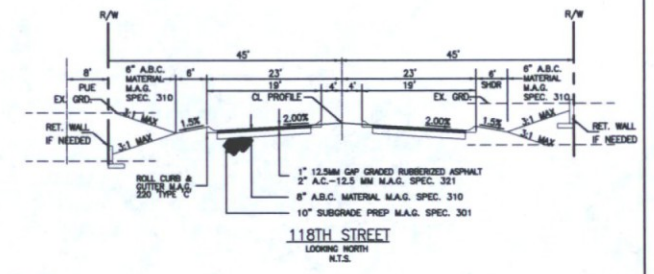




**LEGEND**

- PROPOSED CENTERLINE
- ==== PROPOSED CURB
- PROPOSED EDGE OF PAVEMENT
- PROPOSED STORM DRAIN
- ==== PROPOSED RETAINING WALL
- ===== PROPOSED PAVEMENT
- ===== EXISTING RECORDED R.O.W.

NOTE: POTENTIAL DRAINAGE EASEMENTS MAY BE REQUIRED PARALLEL TO RIGHT OF WAY NEAR FUTURE CULVERT CROSSINGS. EASEMENTS TO BE QUANTIFIED DURING FINAL DESIGN.



REVIEWED BY: J2 engineering and environmental design  
 4649 east cotton gin loop, suite B2  
 phoenix, arizona 85040  
 phone: 602.438.2221  
 www.j2design.us

**ARGUS CONSULTING**  
 A CIVIL ENGINEERING COMPANY, P.C.  
 10115 E. Bell Road, Suite 107 - #104  
 Scottsdale, Arizona 85260 480-596-1131

**118th STREET & JOMAX ROAD**  
 118TH STREET EXTENSION  
 ALIGNMENT STUDY

Designed by: \_\_\_\_\_ Drawn by: \_\_\_\_\_  
 Date: 01-18-17 Job No. 365-16 Sheet 3 of 3

C:\Data\118th & Jomax\118th\_Extension\J2\_Roadway Layout.dwg Jan 18, 2017 Argus

O.S. 50-56





Image 1

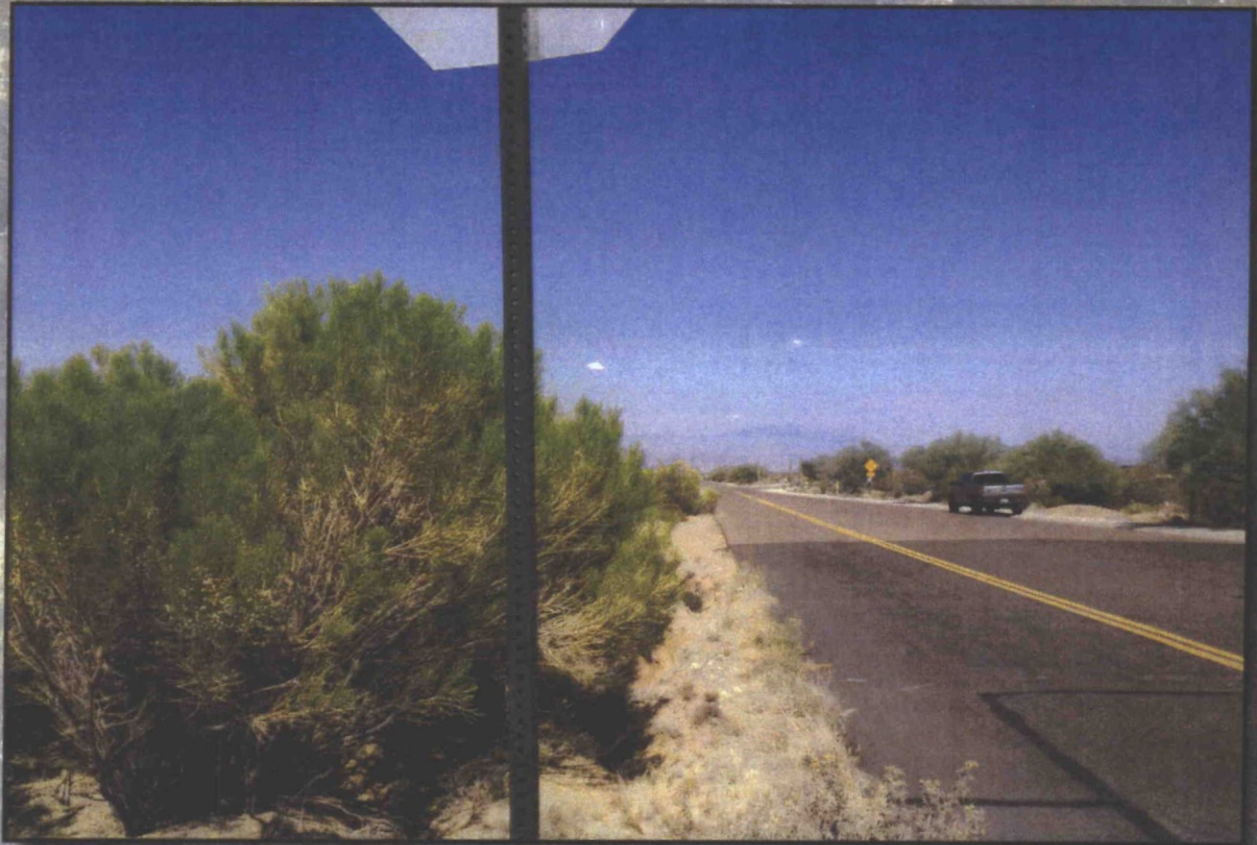


Image 2

118 & Jomax



andersonbaron  
plan · design · achieve  
50 n. mcclintock drive ste 1  
ch

2-AB-2017  
2/10/2017





Image 3



Image 4

118 & Jomax



**andersonbaron**  
plan · design · achieve  
50 n. mcclintock drive, ste 1  
chandler, arizona 85226



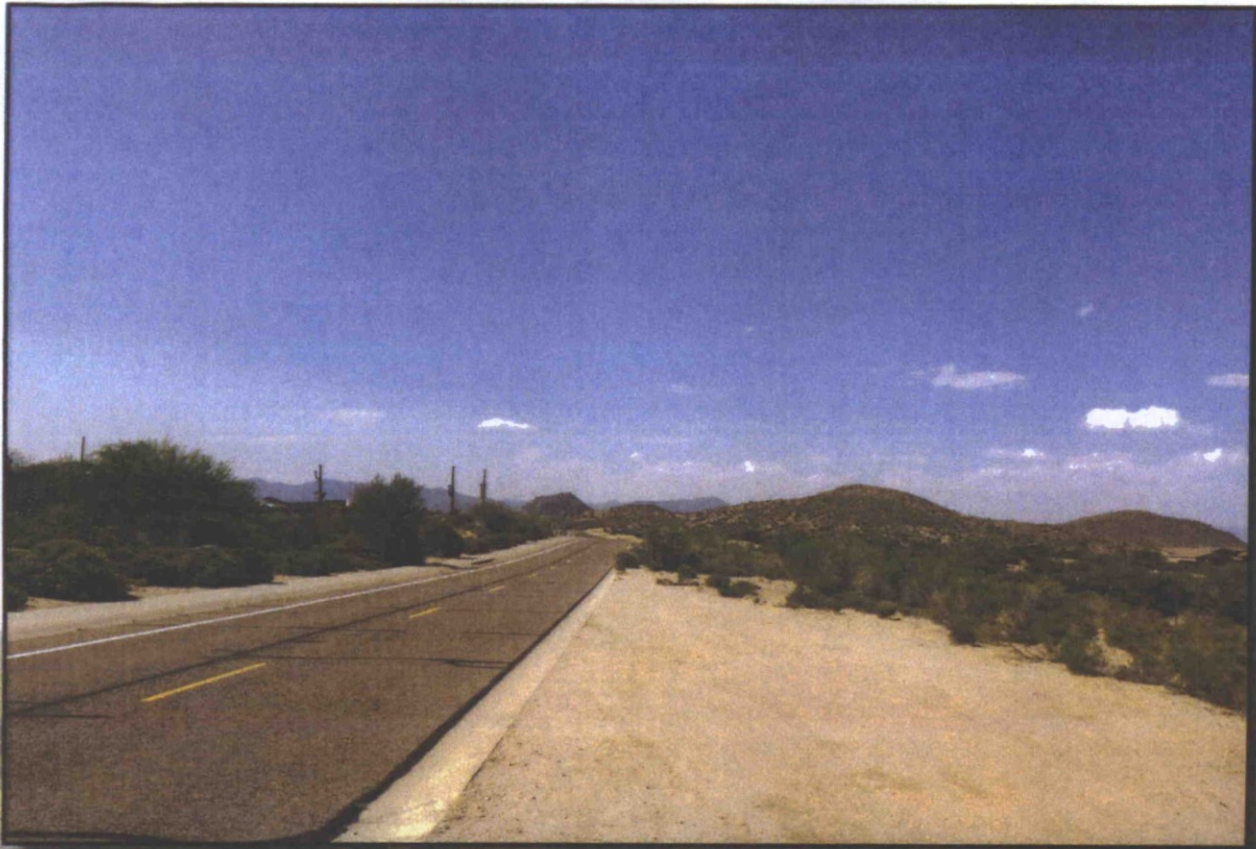


Image 5



Image 6

118 & Jomax



**andersonbaron**  
plan · design · achieve  
50 n. mcclintock drive, ste 1  
chandler, arizona 85226



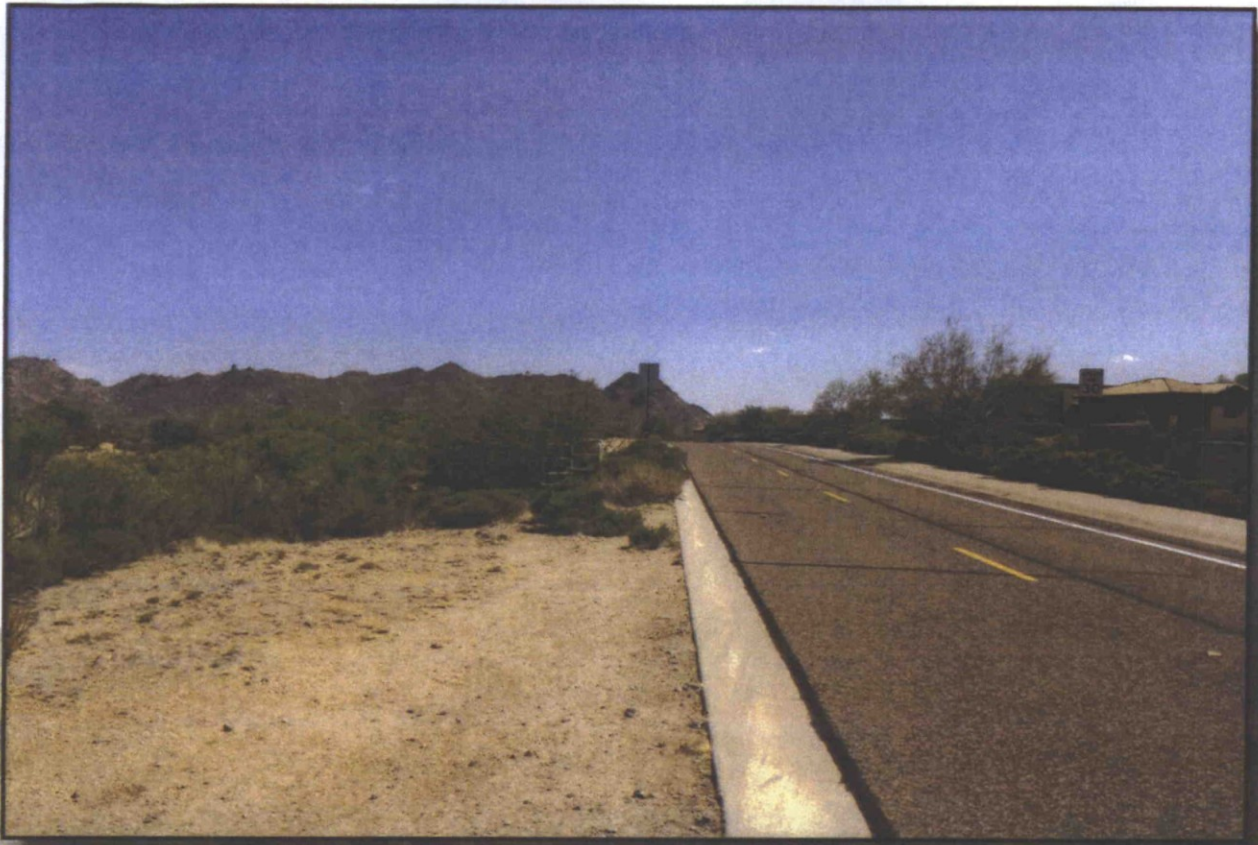


Image 7



Image 8

118 & Jomax



andersonbaron  
plan · design · achieve  
50 n. mcclintock drive, ste 1  
chandler, arizona 85226



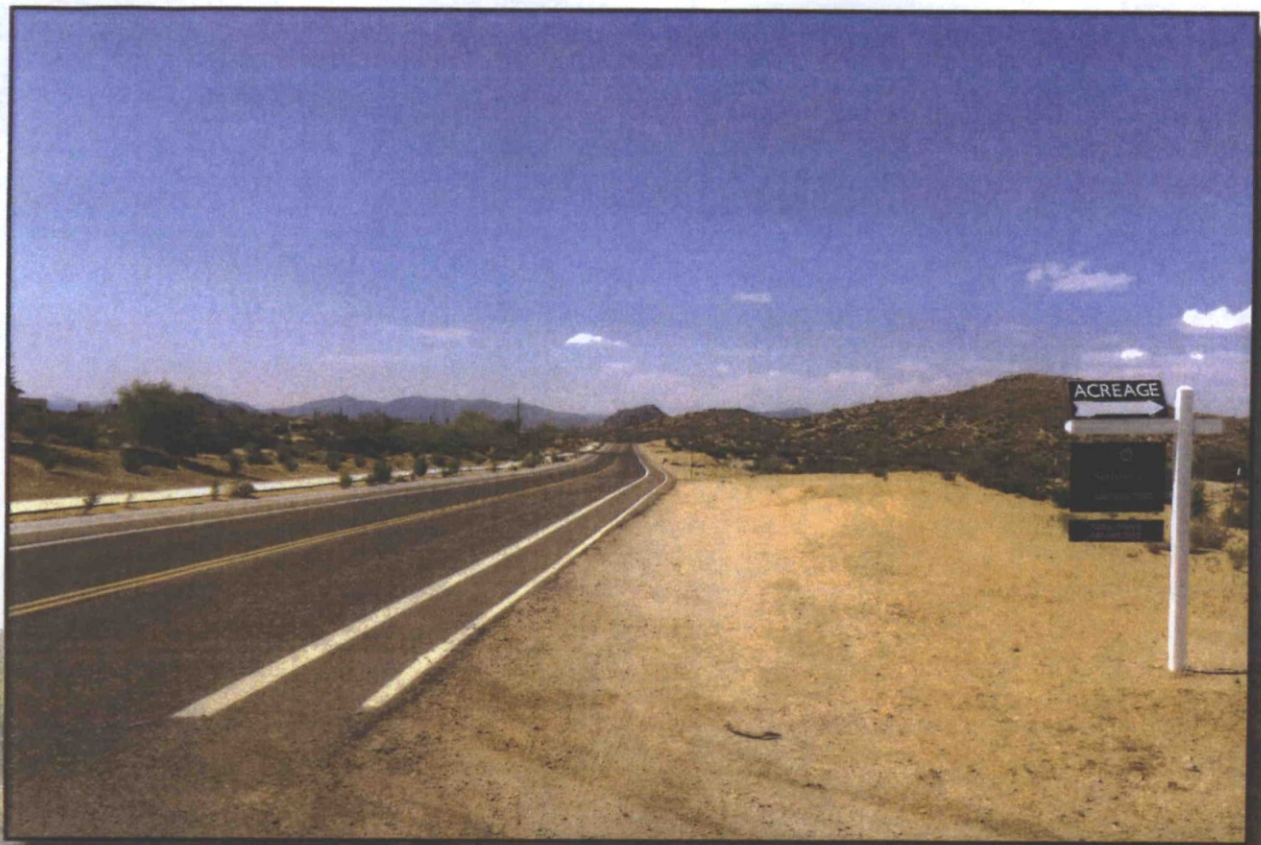


Image 9



Image 10

118 & Jomax



**andersonbaron**  
plan · design · achieve  
50 n. mcclintock drive, ste 1  
chandler, arizona 85226



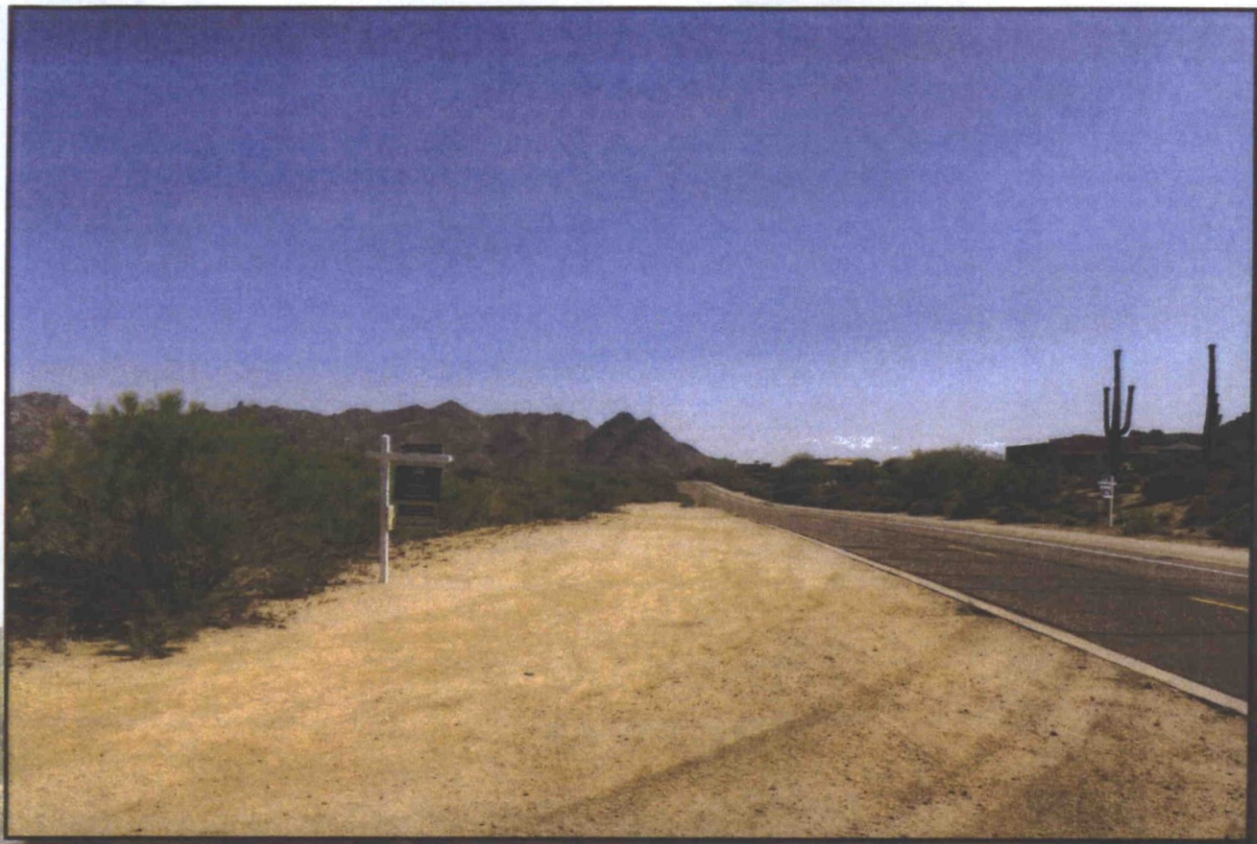


Image 11



Image 12

118 & Jomax



andersonbaron  
plan · design · achieve  
50 n. mcclintock drive, ste 1  
chandler, arizona 85226



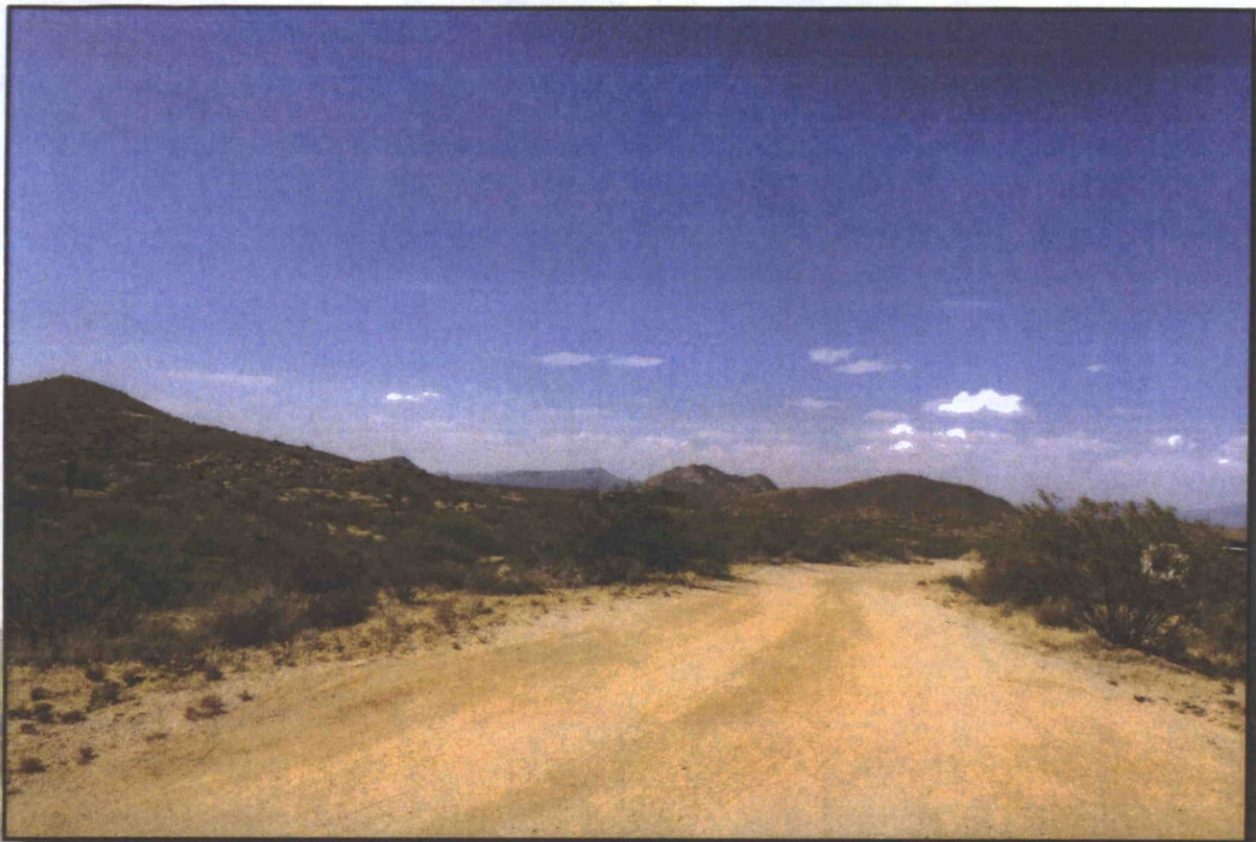


Image 13



Image 14

118 & Jomax



**andersonbaron**  
plan · design · achieve  
50 n. mcclintock drive, ste 1  
chandler, arizona 85226



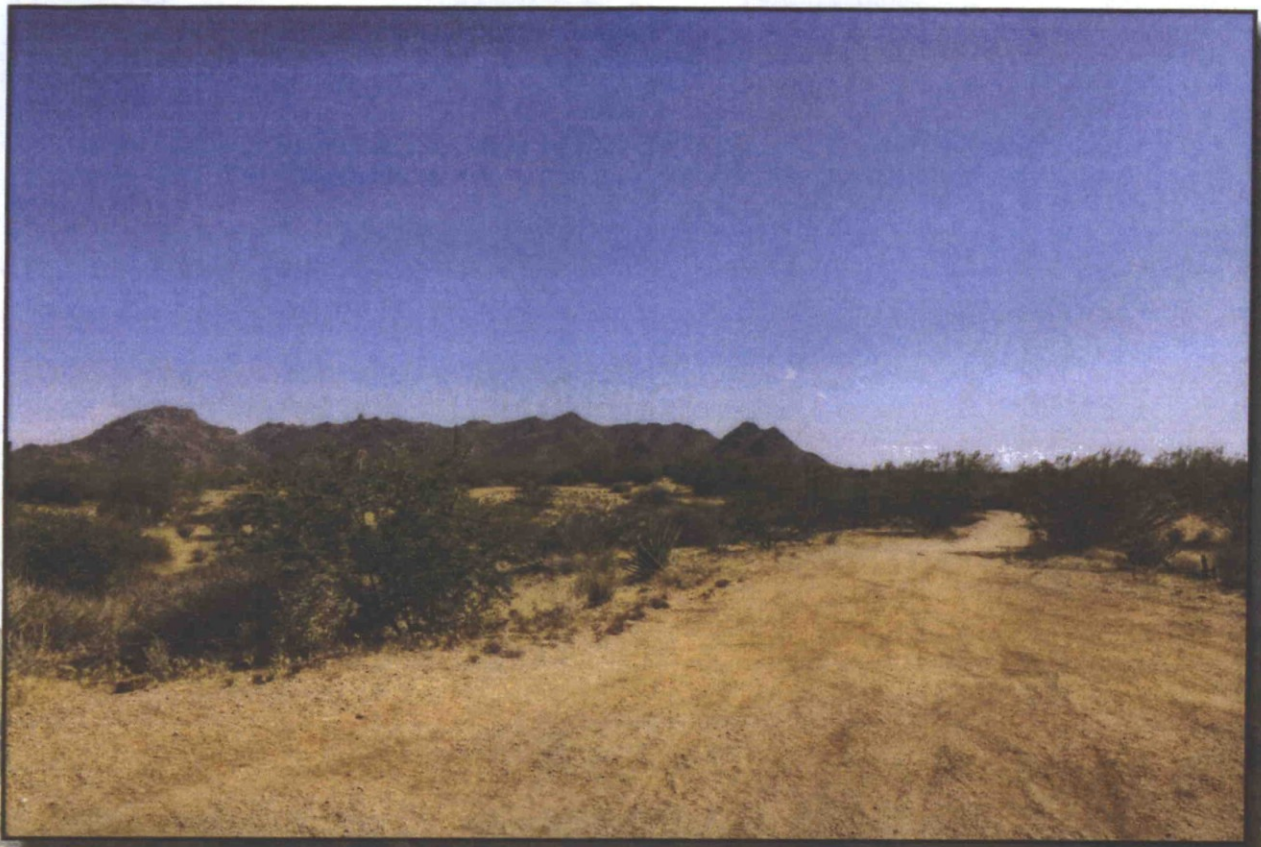


Image 15



Image 16

118 & Jomax



andersonbaron  
plan · design · achieve  
50 n. mcclintock drive, ste 1  
chandler, arizona 85226



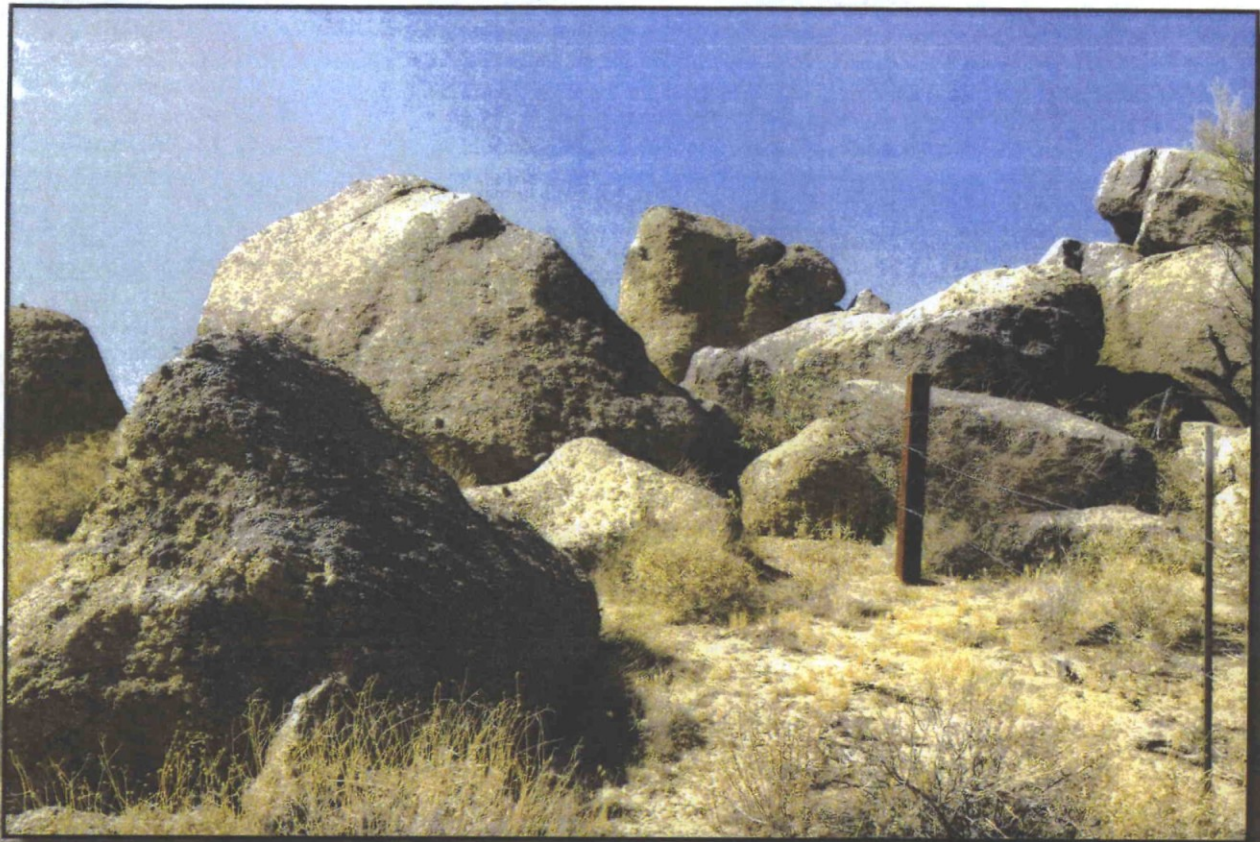


Image 17



Image 18

118 & Jomax



andersonbaron  
plan · design · achieve  
50 n. mcclintock drive, ste 1  
chandler, arizona 85226



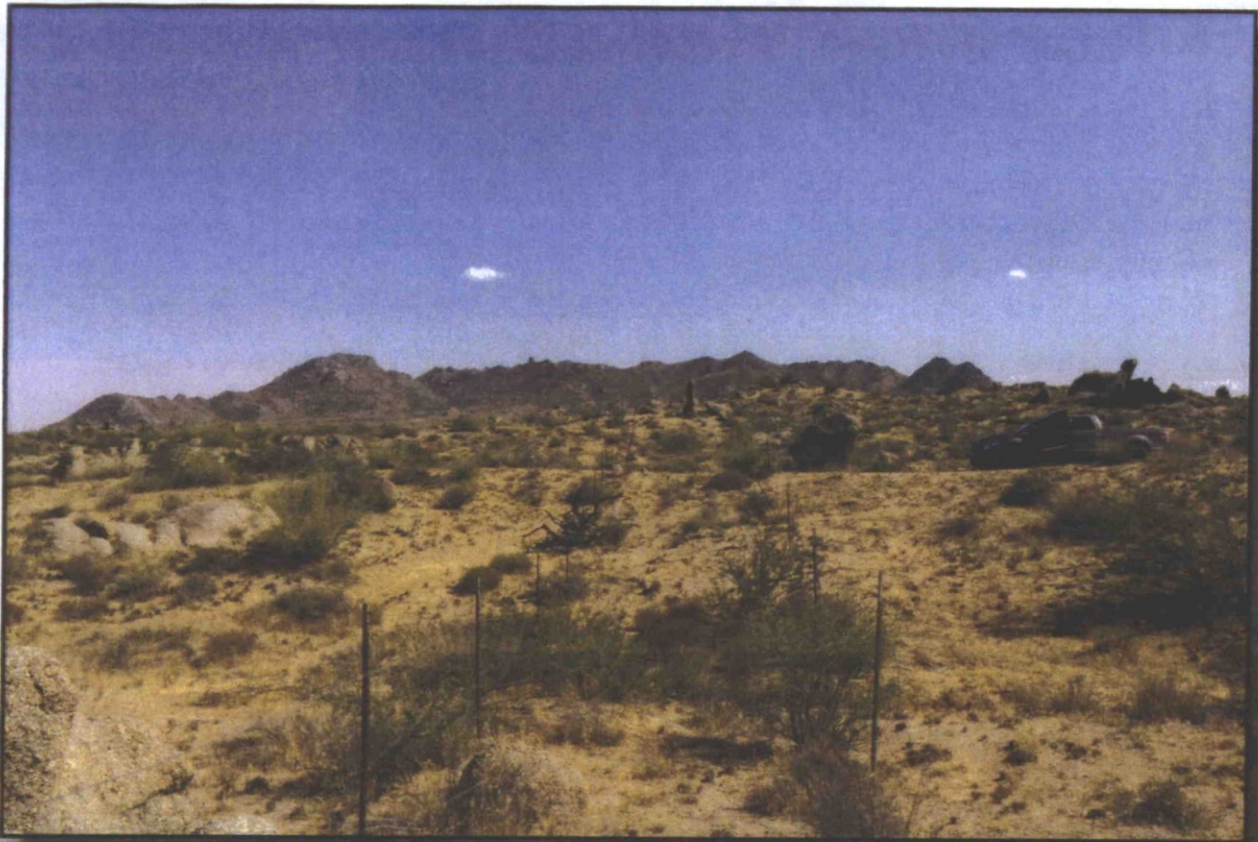


Image 19

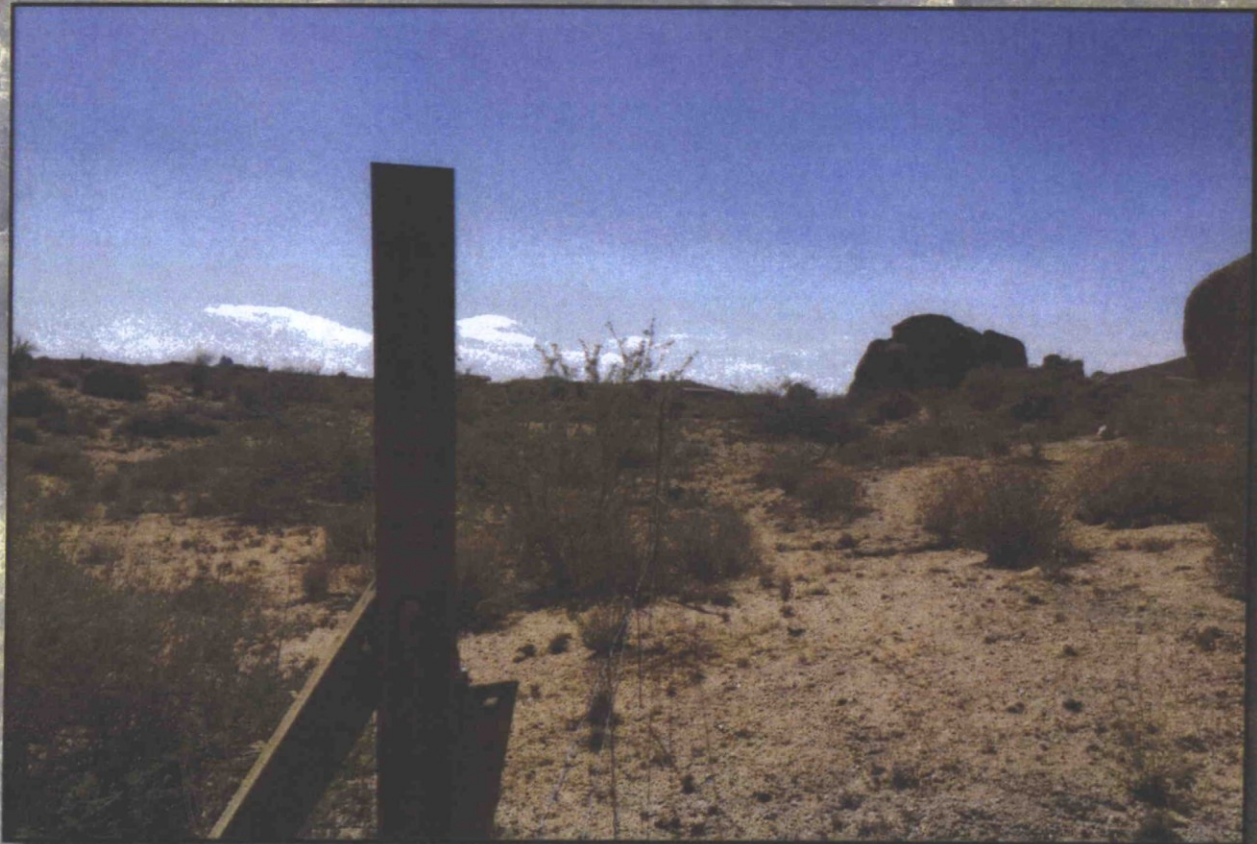


Image 20

118 & Jomax



andersonbaron  
plan · design · achieve  
50 n. mcclintock drive, ste 1  
chandler, arizona 85226



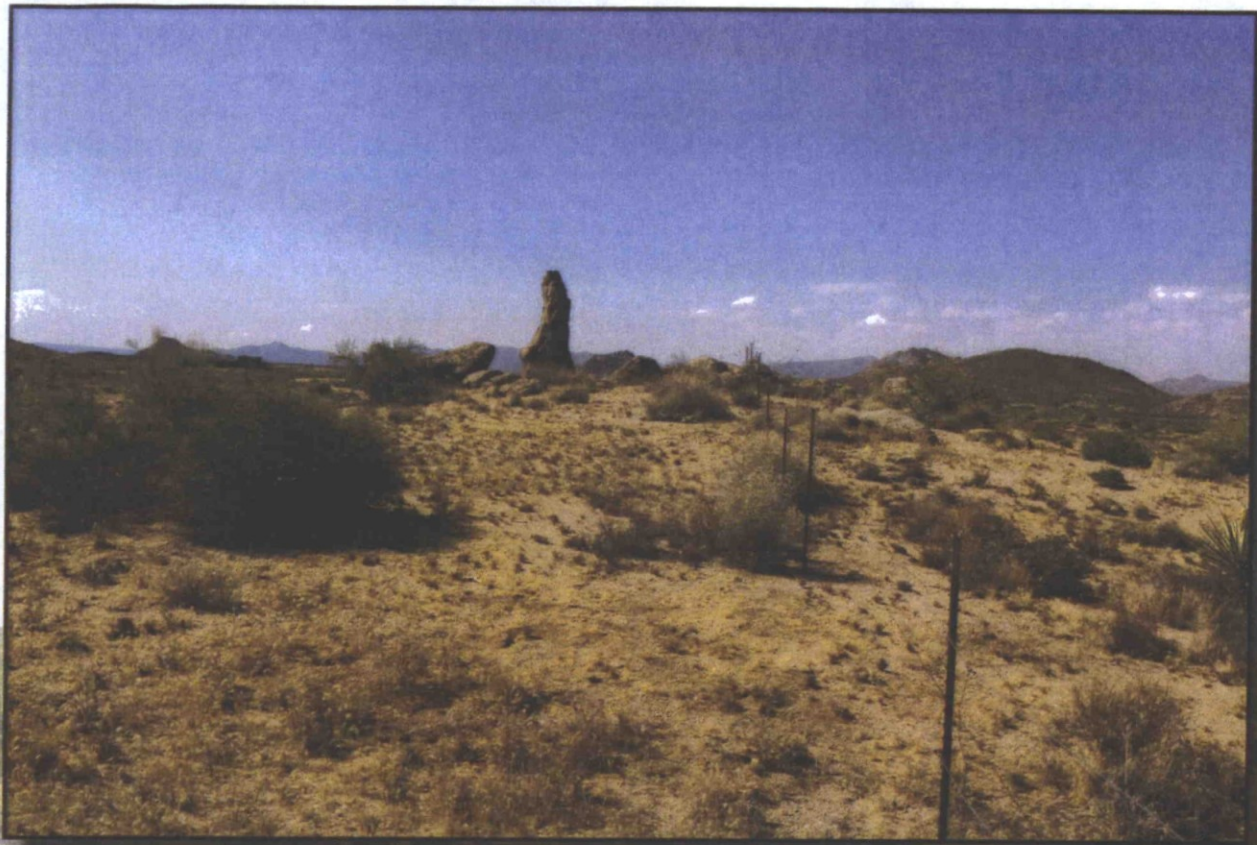


Image 21



Image 22

118 & Jomax



andersonbaron  
plan · design · achieve  
50 n. mcclintock drive, ste 1  
chandler, arizona 85226



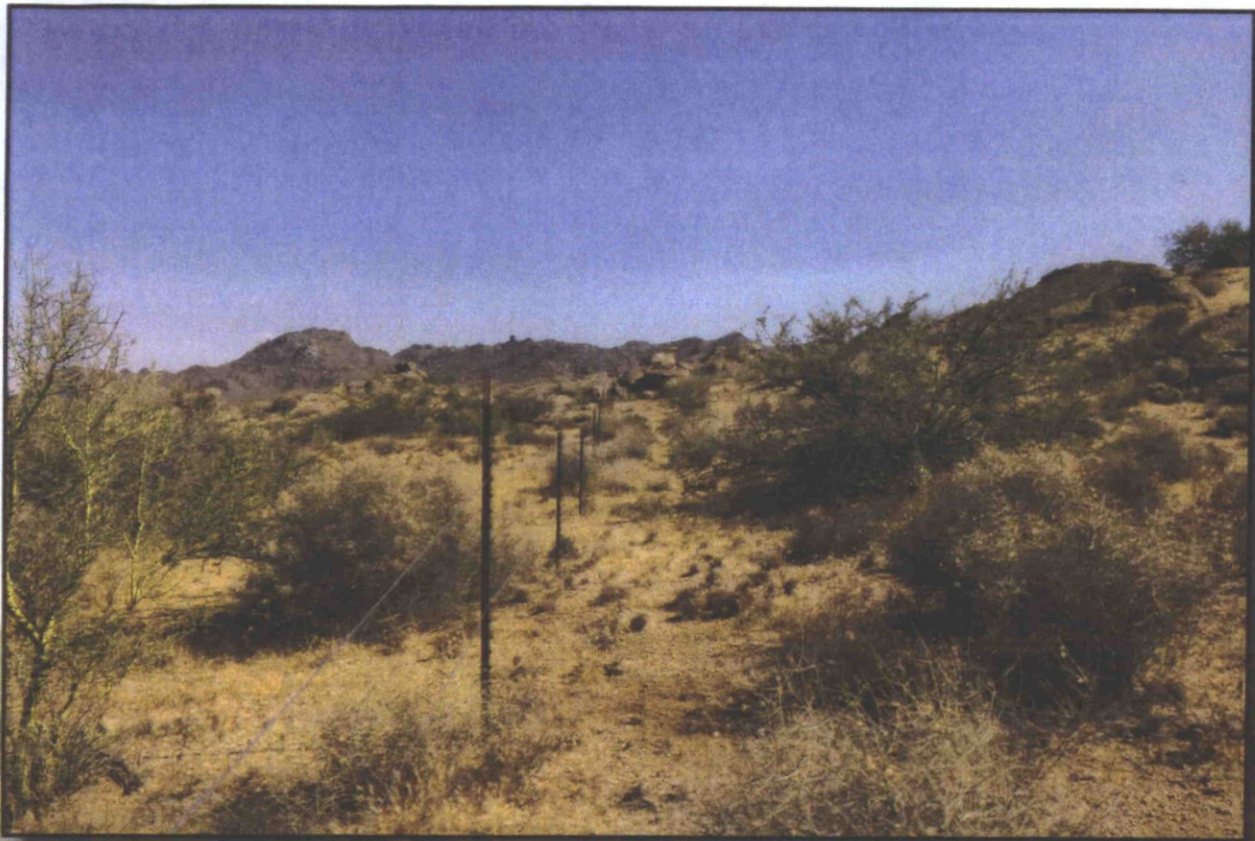


Image 23



Image 24

118 & Jomax



andersonbaron  
plan · design · achieve  
50 n. mcclintock drive, ste 1  
chandler, arizona 85226



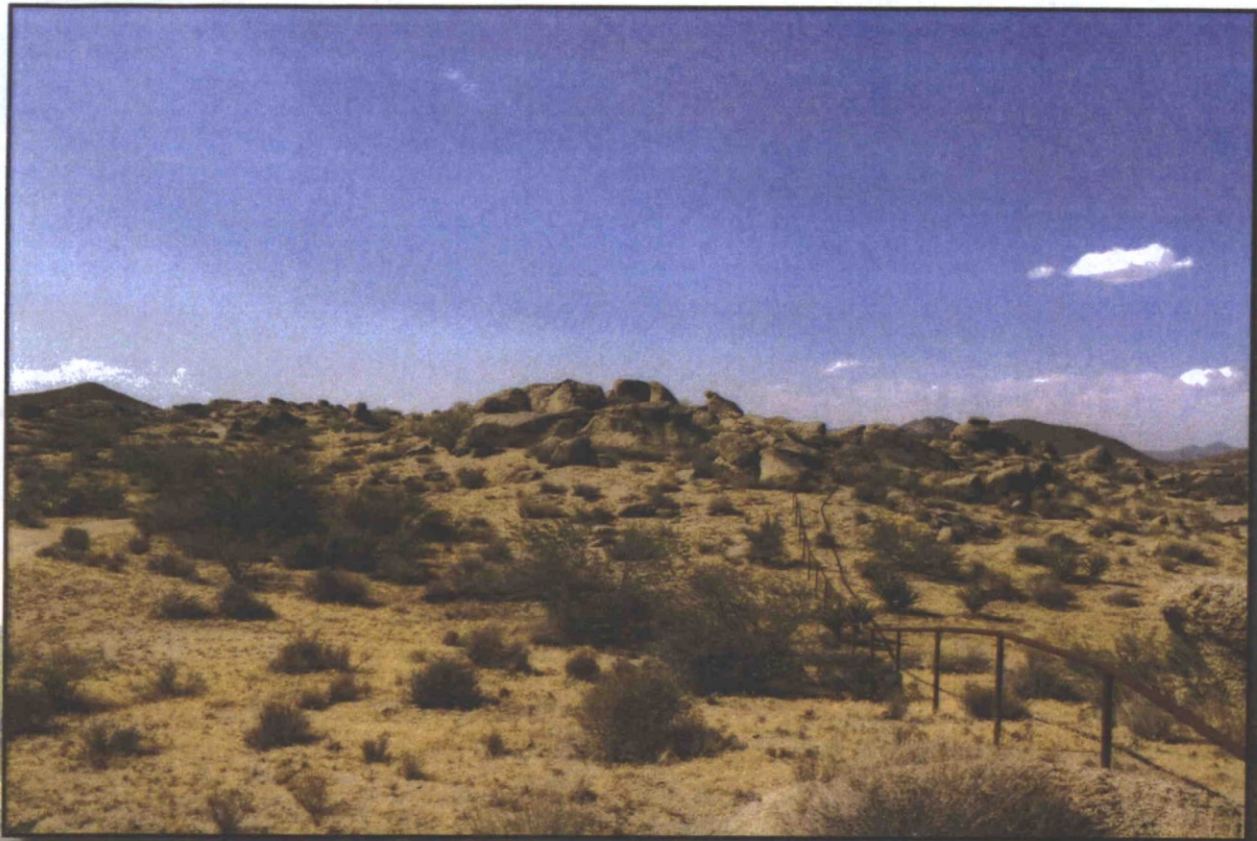


Image 25

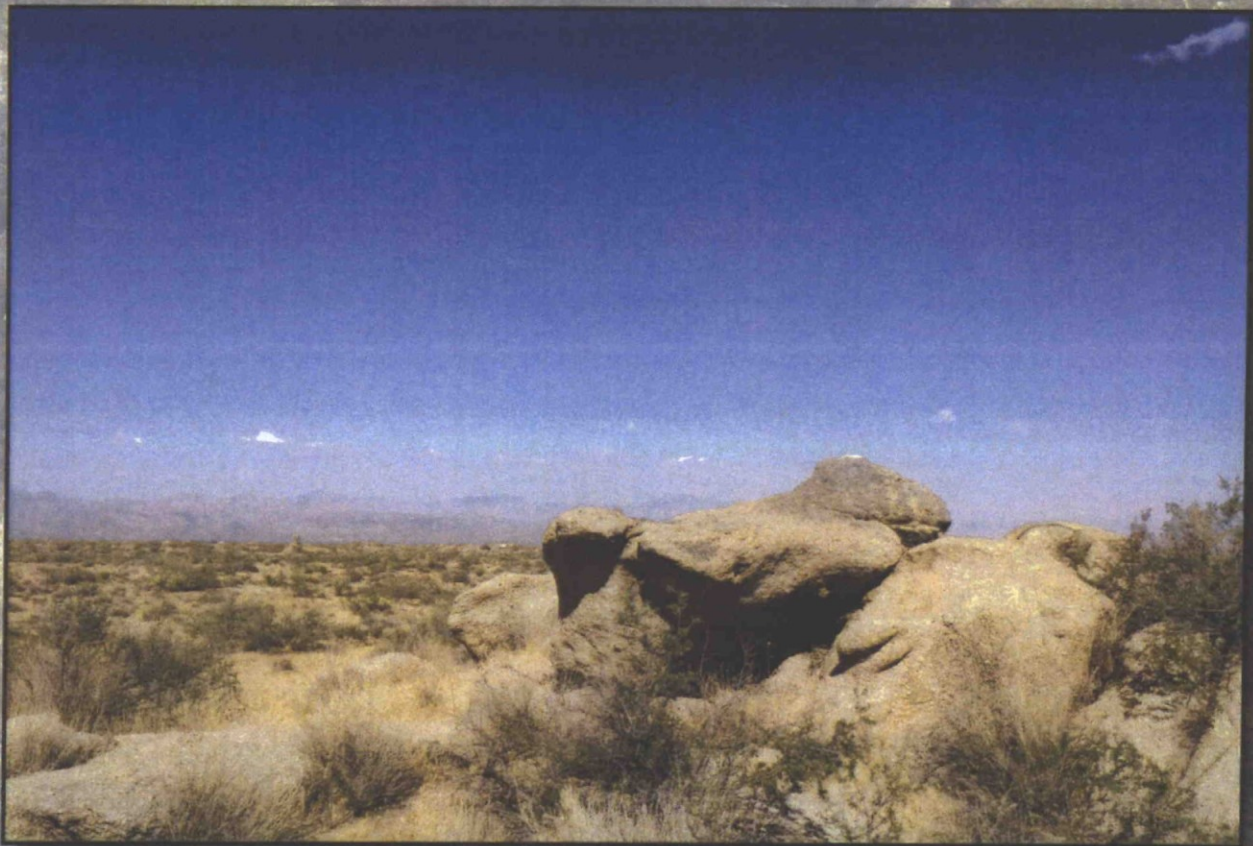


Image 26

118 & Jomax



andersonbaron  
plan · design · achieve  
50 n. mcclintock drive, ste 1  
chandler, arizona 85226



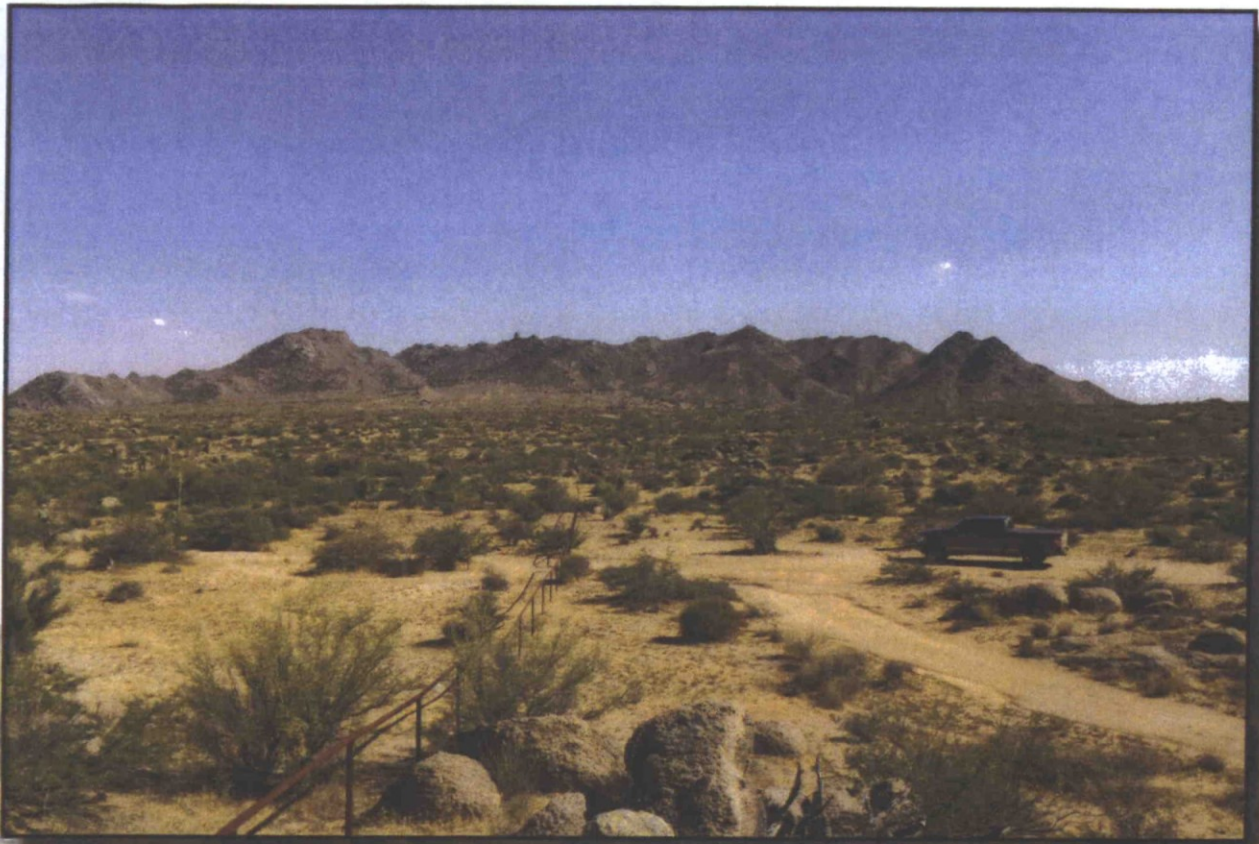


Image 27



Image 28

118 & Jomax



**andersonbaron**  
plan · design · achieve  
50 n. mcclintock drive, ste 1  
chandler, arizona 85226



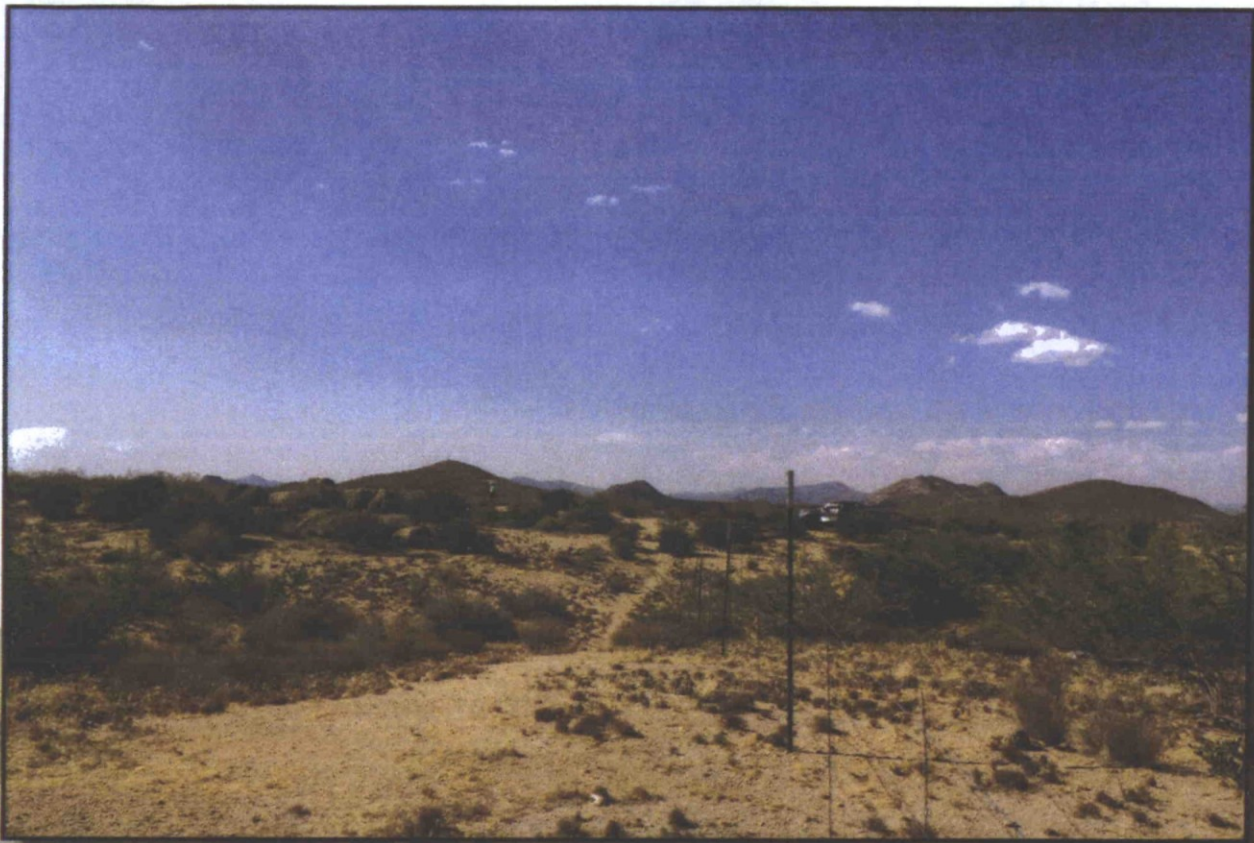


Image 29

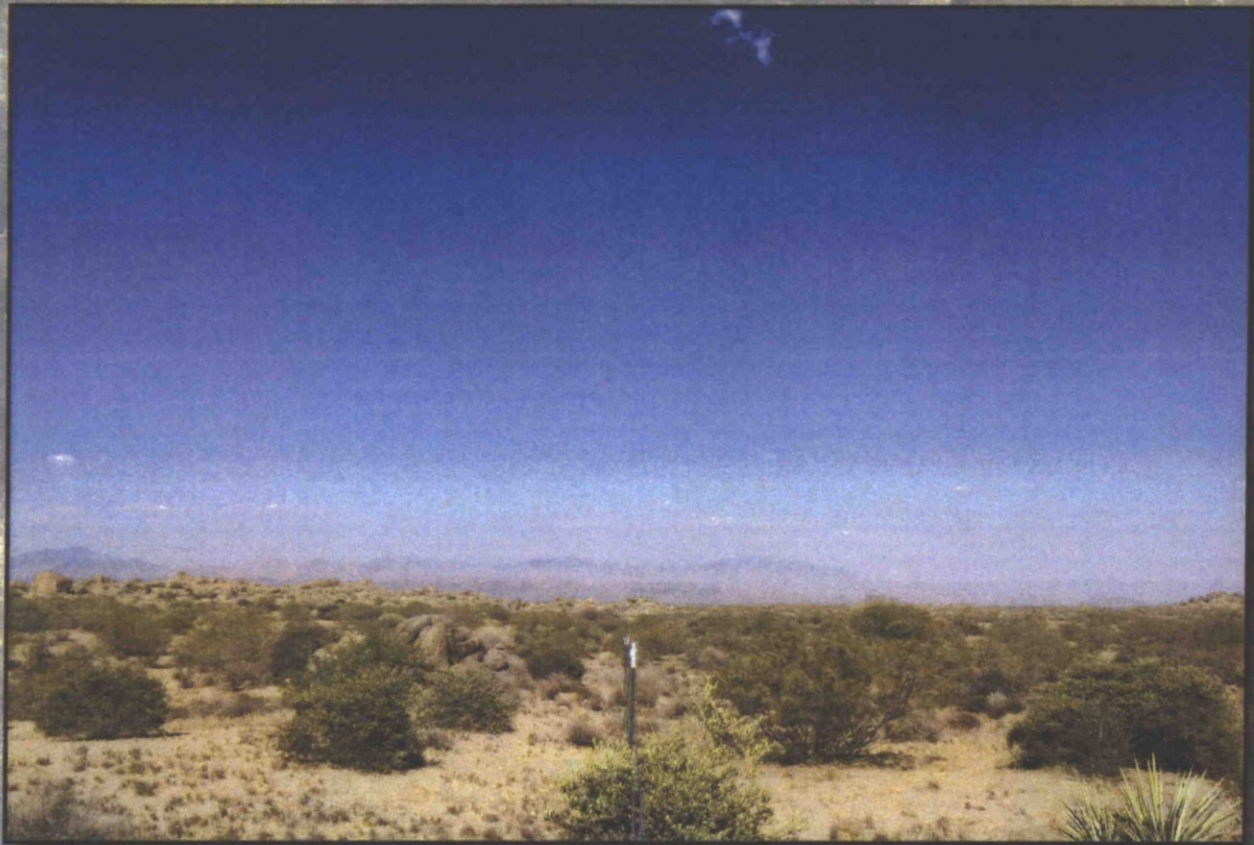


Image 30

118 & Jomax



andersonbaron  
plan · design · achieve  
50 n. mcclintock drive, ste 1  
chandler, arizona 85226



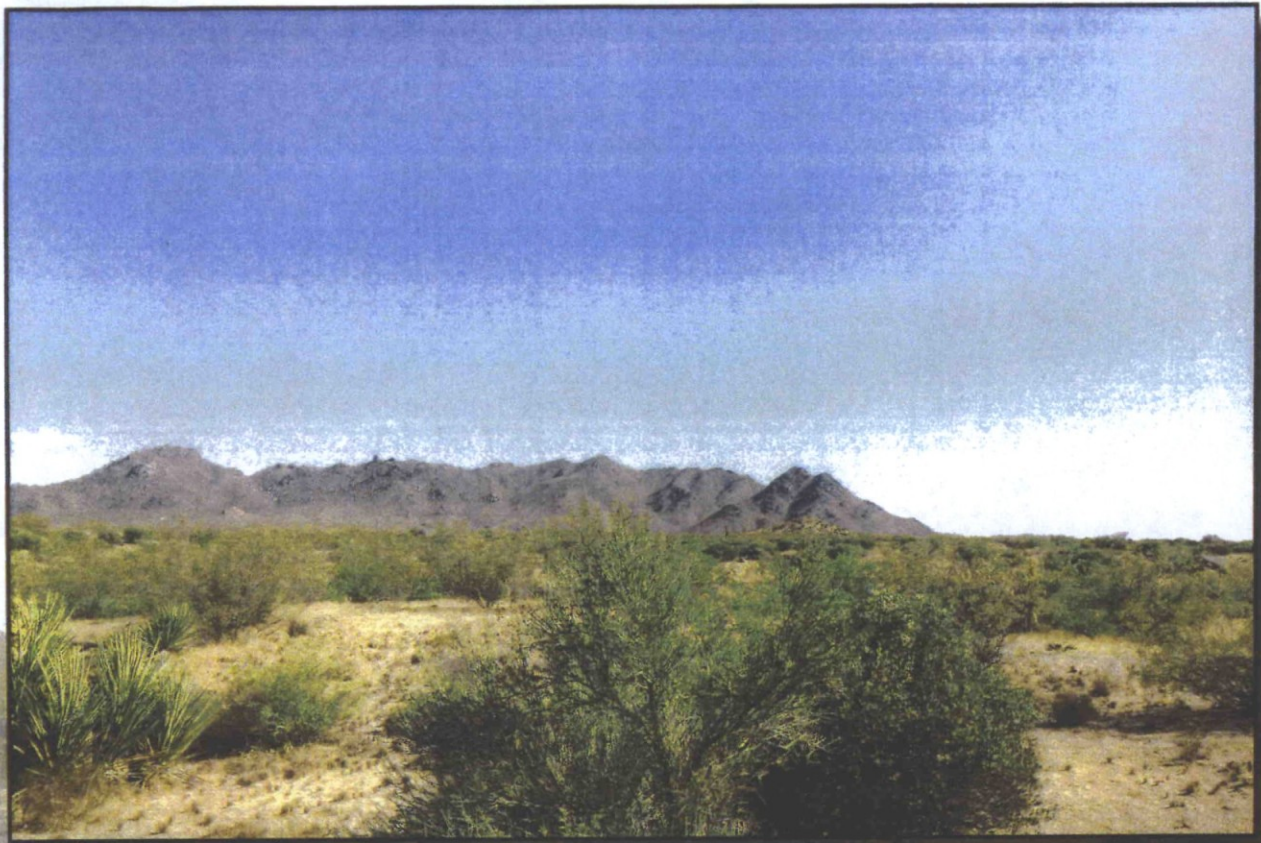


Image 31



Image 32

118 & Jomax



**andersonbaron**  
plan · design · achieve  
50 n. mcclintock drive, ste 1  
chandler, arizona 85226