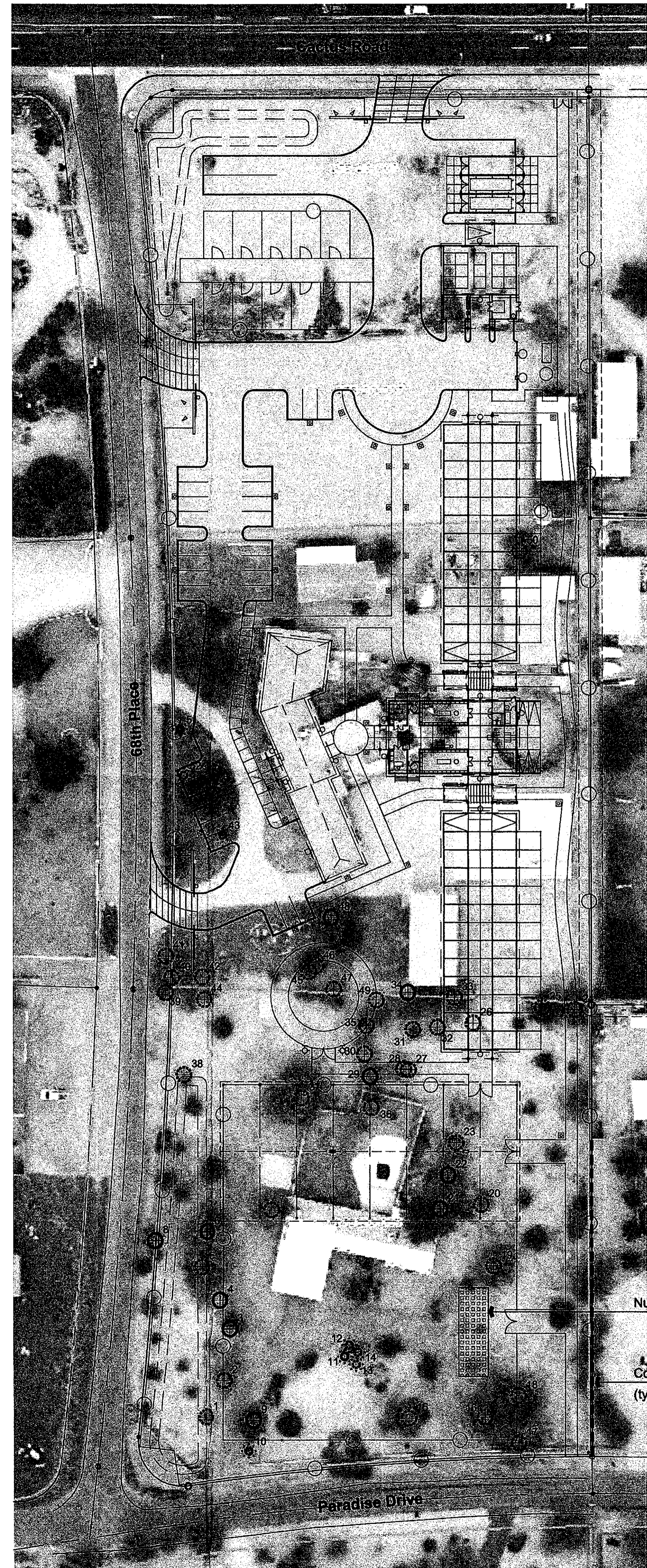


General Salvage Notes

- All plant material to be clearly flagged with tags visible from all directions. Color Code as follows:
 Red = Salvage and relocate
 Blue = Destroy, not salvageable, can not remain in place
 White = Remain in place
- Tags shall be numbered to correspond with the Native Plant Inventory and site plan.
- All requirements of the State of Arizona, including the "Notice of Intent to Clear Land" shall be met notwithstanding any approvals by the City of Scottsdale.
- Contractor is responsible for verifying all project property lines prior to salvage. Any plant material that is labeled salvageable or non-salvageable outside of final staking boundaries are to remain in place unless otherwise directed by owner.
- Contractor is to verify with owner all plant material labeled salvageable or non-salvageable adjacent to N.A.O.S. boundaries and/or drainage ways.
- Contractor to salvage and store in nursery all Barrel Cactus, Prickly Pear, Hedgehog Cactus, and secondary cacti material that are located within limits of clearing.
- The temporary / security fence location shall not be modified or the temporary / security fence shall not be removed without the approval of the Planning and Development Services Inspection Services Division.
- City approved plans are to remain on the job site at all times during course of construction.
- Remain in place plants, adjacent to disturbance limits, shall be roped off prior to construction.



| Plant # | Common Name | Caliper (in)/ Height (ft) | Status | Comments |
|---------|-----------------|------------------------------|--------|---|
| 1 | Mesquite | 6 | NS | Trunk Form / Trunk Damage |
| 2 | Blue Palo Verde | 12 | NS | Branch Dieback / Trunk Damage |
| 3 | Mesquite | 8 | S | |
| 4 | Mesquite | 10 | S | |
| 5 | Blue Palo Verde | 16 | NS | Poor Structure / Leaning |
| 6 | Blue Palo Verde | 15 | S | |
| 7 | Mesquite | 18 | NS | Branch Dieback / Cambium Damage |
| 8 | Mesquite | 8 | S | |
| 9 | Mesquite | 9 | S | |
| 10 | Saguaro | 84 | NS | 8 arms / Damaged |
| 11 | Saguaro | 25 | S | 2 arms |
| 12 | Saguaro | 54 | NS | 3 arms / Damaged |
| 13 | Yucca elata | 7 | NS | Damaged |
| 14 | Joshua Tree | 7 | NS | Damaged |
| 15 | Mesquite | 24 | NS | Branch Dieback / Cambium Damage |
| 16 | Blue Palo Verde | 22 | NS | Exposed Roots / Broken Branches |
| 17 | Blue Palo Verde | 14 | NS | Branch Dieback / Broken Branches |
| 18 | Blue Palo Verde | 20 | NS | Trunk Form |
| 19 | Mesquite | 20 | NS | Broken Branches / Cambium Damage |
| 20 | Mesquite | 8 | NS | Trunk Form / Cambium Damage |
| 21 | Mesquite | 16 | S | |
| 22 | Mesquite | 10 | S | |
| 23 | Blue Palo Verde | 12 | NS | Trunk Form / Cambium Damage |
| 24 | Mesquite | 12 | NS | Exposed Roots / Proximity to Power Pole |
| 25 | Mesquite | 12 | NS | Trunk Form / Leaning |
| 26 | Blue Palo Verde | 8 | NS | Branch Dieback / Cambium Damage |
| 27 | Blue Palo Verde | 6 | NS | Branch Dieback / Cambium Damage |
| 28 | Blue Palo Verde | 7 | NS | Branch Dieback / Cambium Damage |
| 29 | Mesquite | 8 | S | |
| 30 | Blue Palo Verde | 8 | NS | Branch Dieback / Cambium Damage |
| 31 | Blue Palo Verde | 8 | NS | Branch Dieback / Cambium Damage |
| 32 | Blue Palo Verde | 8 | NS | Branch Dieback / Cambium Damage |
| 33 | Mesquite | 8 | NS | Poor Structure / Leaning |
| 34 | Mesquite | 9 | S | |
| 35 | Blue Palo Verde | 7 | NS | Branch Dieback / Cambium Damage |
| 36 | Mesquite | 20 | NS | Trunk Form / Cambium Damage |
| 37 | Mesquite | 26 | NS | Branch Dieback / Cambium Damage |
| 38 | Mesquite | 4 | NS | Trunk Form / Cambium Damage |
| 39 | Mesquite | 6 | NS | Trunk Form / Leaning |
| 40 | Mesquite | 8 | NS | Trunk Form / Leaning |
| 41 | Mesquite | 9 | NS | Trunk Form / Leaning |
| 42 | Mesquite | 12 | NS | Trunk Form / Leaning |
| 43 | Ocotillo | 9 | NS | Damaged |
| 44 | Mesquite | 7 | NS | Diseased / Cambium Damage |
| 45 | Mesquite | 6 | NS | Trunk Form / Leaning |
| 46 | Mesquite | 6 | NS | Trunk Form / Leaning |
| 47 | Mesquite | 26 | NS | Trunk Form / Cambium Damage |
| 48 | Mesquite | 22 | S | |
| 49 | Mesquite | 8 | NS | Proximity to Building |
| 50 | Mesquite | 8 | NS | Exposed Roots |
| 51 | Ocotillo | 16 | S | |
| 52 | Saguaro | 8 | NS | 15 arms / Damaged |

| Summary | Trees | Cacti | Legend |
|-----------------|-------|-------|-----------------------|
| Salvageable | 10 | 2 | S = Salvageable |
| Non-Salvageable | 34 | 6 | NS = Non-Salvageable |
| Remain-In-Place | 0 | 0 | RIP = Remain-In-Place |
| Total | 44 | 8 | |

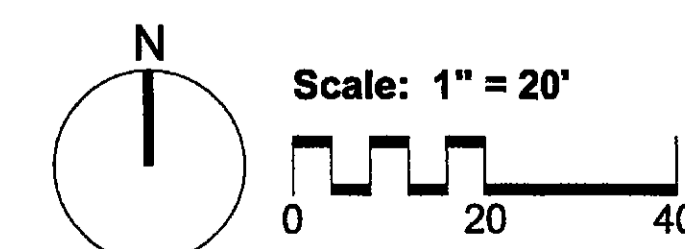
Plant Legend

- ⊕ Tree - Salvage
- ⊗ Tree - Destroy
- Tree - Remain / Protect In Place
- ⊕ Cacti - Salvage
- ⊗ Cacti - Destroy
- Cacti - Remain / Protect In Place

Project Consultants

Salvage Contractor **Native Resources International**
 1540 West Happy Valley Road
 Phoenix, Arizona 85085
 623-869-6757 (p) • 623-869-6769 (f)
 Contact: Kevin Brenda

APPROVED
 FINAL PLANS PLANNING
 8/29/2017
 DATE APPROVED BY



8/14/17



Native Resources Intl.
 1540 W Happy Valley Rd.
 Phoenix, AZ, 85085
 Phone (623) 869-6757
 Fax (623) 869-6769

PLANNING

Najafi Ranch Residence

12011 N. 68th Place
 Scottsdale, Arizona

Native Plant Inventory

3942-17-1

DATE: 7/28/2016
 REVISION:
 SCALE: 1" = 50'
 CHECKED:
 DRAWN: KB
 SHEET 1 OF 1