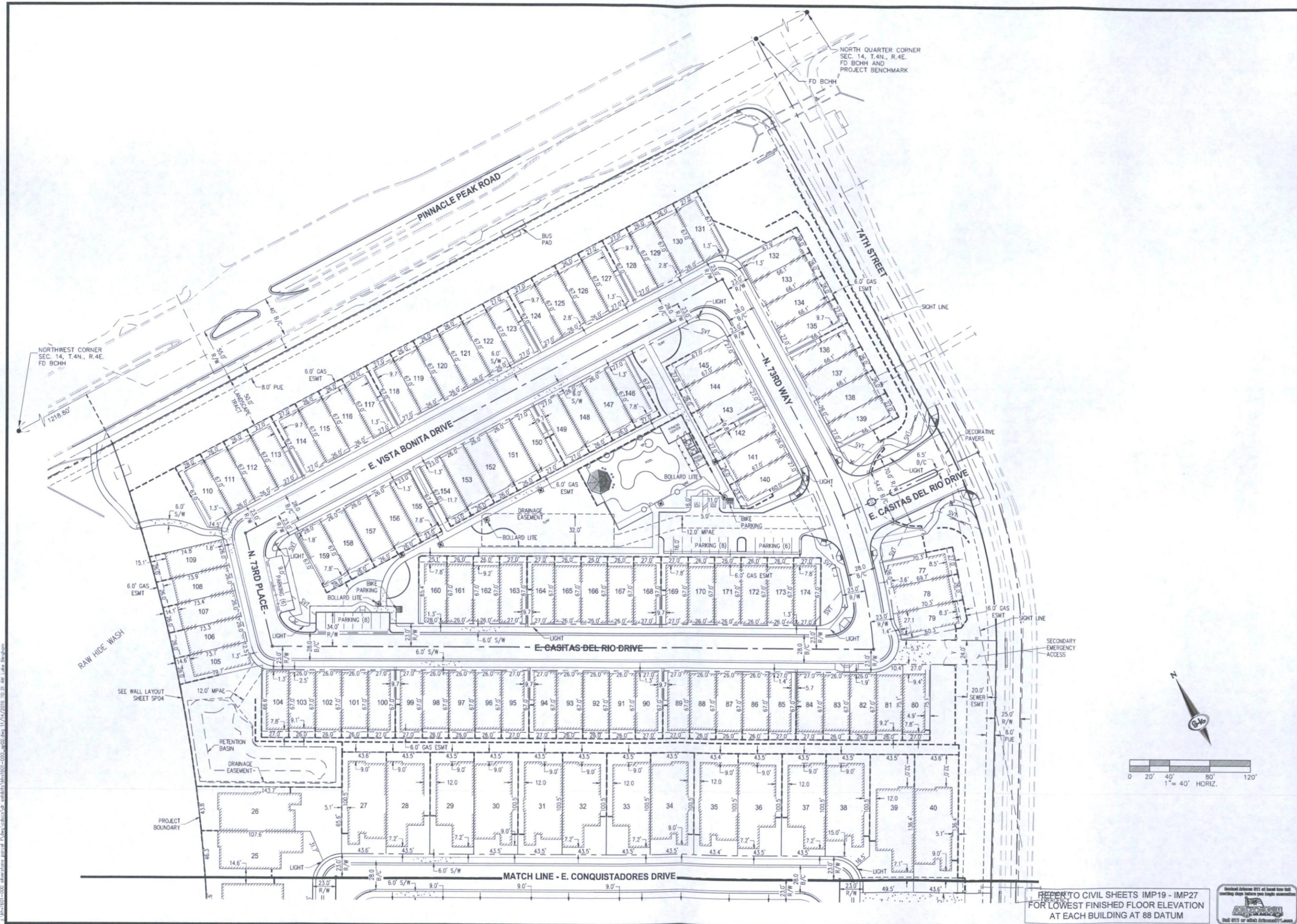


Final Approved Stamped Plans
Full Size



SLATER HANIFAN GROUP
 CONSULTING ENGINEERS & PLANNERS
 11201 N. TATUM BOULEVARD, PHOENIX, AZ 85028
 PHONE (602) 687-9884

NO.	DESCRIPTION	DATE	BY	APP.

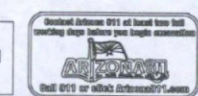
SCOTTSDALE, AZ
K. HOVNIANIAN GREAT WEST HOMES, LLC
SILVERSTONE PARCEL F
SITE PLAN

REG 14
 T 4N
 R 4E
 DATE: 11/10/2016
 DRAFTER: CP,GR
 DESIGNER: J
 CHECKED: RT
 PROJECT NO.
KHV1601-000



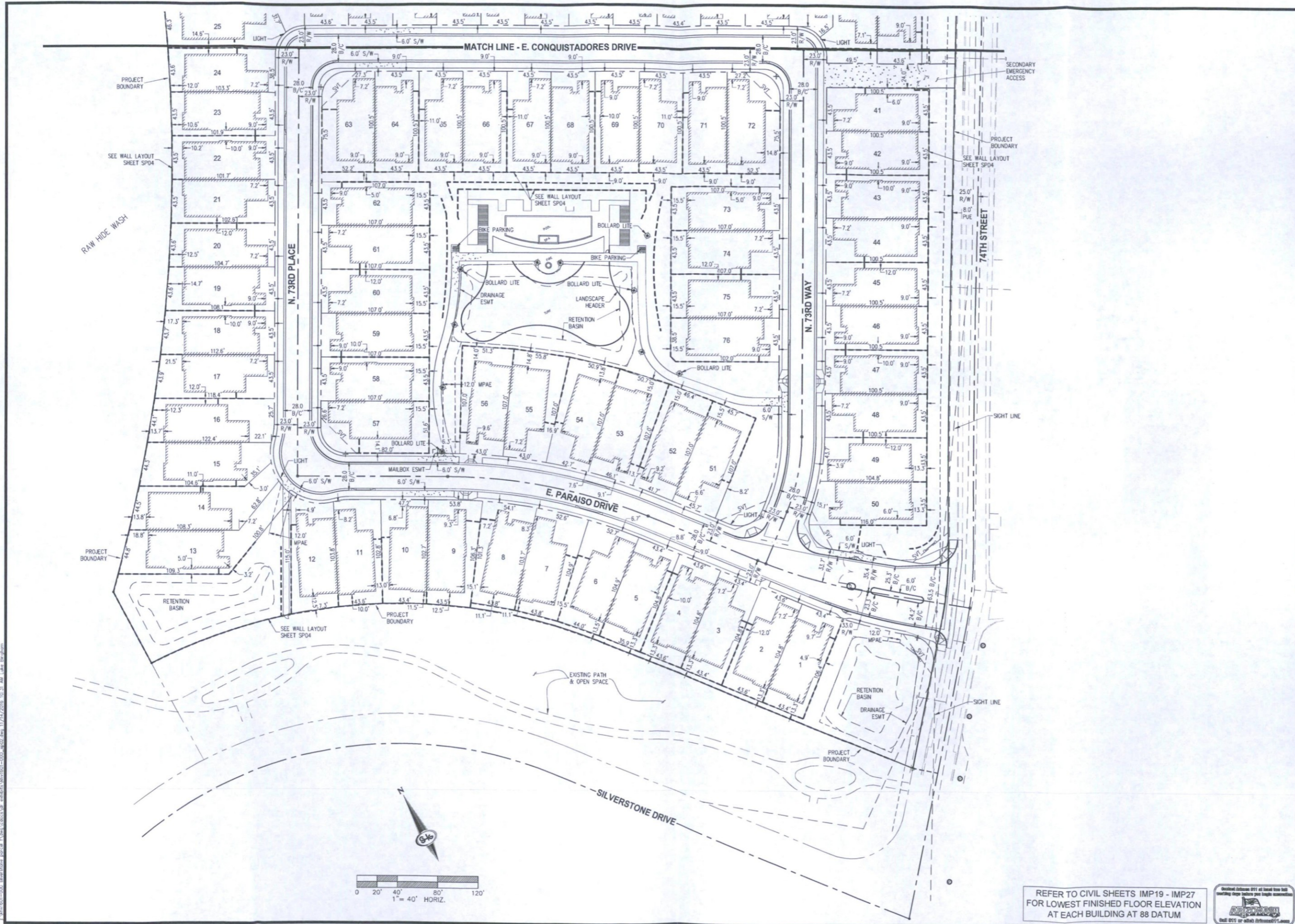
SP02
 SHEET 2 OF 6

REFER TO CIVIL SHEETS IMP19 - IMP27
 FOR LOWEST FINISHED FLOOR ELEVATION
 AT EACH BUILDING AT 88 DATUM



I:\Projects\1601-000 Silverstone Parcel F\Drawings\1601-000-SP02.dwg 11/14/2016 10:31 AM JKH:slg

9-PP-2015 15-ZN-2005 2-MP-2006 366-16-4

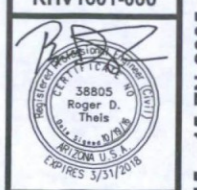


SLATER HANIFAN GROUP
 CONSULTING ENGINEERS & PLANNERS
 11201 N. TATUM BOULEVARD #250, PHOENIX, AZ 85028
 PHONE (602) 987-9884

NO.	DESCRIPTION	DATE	BY	APP.

SCOTTSDALE, AZ
K. HOVNONIAN GREAT WEST HOMES, LLC
SILVERSTONE PARCEL F
SITE PLAN

DATE: 10/19/2016
 DRAFTER: CP,GR
 DESIGNER: JI
 CHECKED: RT
 PROJECT NO.
KHV1601-000



SP03
 SHEET 3 OF 6

REFER TO CIVIL SHEETS IMP19 - IMP27
 FOR LOWEST FINISHED FLOOR ELEVATION
 AT EACH BUILDING AT 88 DATUM



9-PP-2015 15-ZN-2005 2-MP-2006 366-16-4

1:10-1601-0002 alterations parcel 01.dwg, 10/19/2016 10:31 AM, K. Hovnonian

