

N. 1/4 CORNER,
SEC. 26, T4N, R4E,
FND. MARICOPA COUNTY BCF
RLS# 33307

N. LINE, NE 1/4, SEC. 26, T4N, R4E
S89°58'51"E 2641.87'

NE CORNER,
SEC. 26, T4N, R4E,
FND. GLO BC
(DISTURBED)

CURVE #	DELTA	RADIUS	LENGTH	CHORD
C1	9°07'35"	729.28'	116.16'	S05°04'29"E 116.04'
C2	12°03'02"	732.21'	154.00'	S05°03'00"E 153.72'
C3	34°07'44"	365.00'	217.42'	S55°43'05"W 214.22'
C4	47°04'28"	400.50'	329.06'	N74°54'55"W 319.88'
C5	1°49'21"	3785.00'	120.39'	N10°10'07"W 120.38'
C6	16°23'01"	1500.00'	428.92'	S84°49'54"E 427.46'
C7	8°03'22"	3730.00'	524.47'	S07°03'06"E 524.03'

LINE #	BEARING	LENGTH
L1	S11°03'14"E	140.57'
L2	S11°05'42"E	143.34'
L3	S31°49'11"W	36.61'
L4	N51°20'47"W	36.38'
L5	N11°04'47"W	316.01'

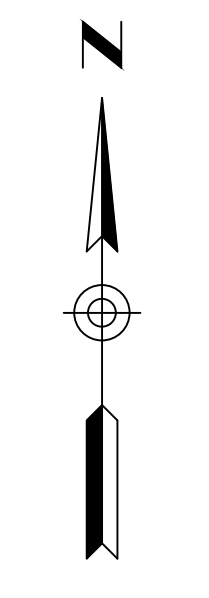
LINE #	BEARING	LENGTH
L6	N37°43'09"E	46.58'
L7	S56°27'11"E	22.77'
L8	N78°55'13"E	55.00'
L9	N11°26'43"E	325.16'

N-S MID-SECTION LINE, SEC. 26, T4N, R4E
S89°57'50"E 2641.99'

CENTER OF SECTION,
SEC. 26, T4N, R4E,
FND. ADOT AC

E. 1/4 CORNER,
SEC. 26, T4N, R4E,
FND. GLO BC

N-S MID-SECTION LINE, SEC. 26, T4N, R4E
N0°02'27"W 2641.61'



SCALE
1" = 70'

LEGEND

- SECTION LINE
- PROPERTY LINE
- - - EXISTING PARCEL LINES
- - - EASEMENT AS NOTED
- ACF = ALUMINUM CAP FLUSH
- BCF = BRASS CAP FLUSH
- BCHH = BRASS CAP IN HANDHOLE
- DKT. PG. = DOCKET PAGE
- BK. PG. = BOOK PAGE
- DOC. = DOCUMENT
- M.C. = MARICOPA COUNTY
- M.C.R. = MARICOPA COUNTY RECORDER
- FND = FOUND
- APN = ASSESSORS PARCEL NUMBER
- R/W = RIGHT-OF-WAY
- ESMT. = EASEMENT
- = ALUMINUM CAP FLUSH AS NOTED
- = BRASS CAP IN HANDHOLE AS NOTED
- = BRASS CAP FLUSH AS NOTED
- = SET REBAR WITH CAP RLS# 41282

MILLER ROAD ALIGNMENT

CAVASSON BLVD.
S86°58'36"W 818.40'

LEGACY BLVD.
N78°54'18"E 1921.36'

PARCEL 1
GH LEGACY INVESTORS, LLC
SPECIAL WARRANTY DEED
DOC. 2020-1273648, M.C.R.

ARIZONA STATE LAND DEPARTMENT
APN# 212-36-008A
BK. 416, PG. 13, M.C.R.
(NOT A PART)

NWGH LLC
APN: 212-31-120R
PATENT NO. 53-119887-03
DOC. 2020-0832892, M.C.R.

NWGH LLC
APN: 212-31-120V
PATENT NO. 53-119887-04
DOC. 2020-1248038, M.C.R.
(NOT A PART)

GH LEGACY INVESTORS, LLC
SPECIAL WARRANTY DEED
DOC. 2020-1273648, M.C.R.

GH LEGACY INVESTORS, LLC
SPECIAL WARRANTY DEED
DOC. 2020-1273648, M.C.R.

GH LEGACY INVESTORS, LLC
DOC. 2021-0453380, M.C.R.

GH LEGACY INVESTORS, LLC
TRACT C APN: 212-34-962
BK. 1471, PG. 18, M.C.R. &
DOC. 2021-0453381, M.C.R.

NWGH LLC
APN: 212-31-120V
PATENT NO. 53-119887-04
DOC. 2020-1248038, M.C.R.
(NOT A PART)

NWGH LLC
TRACT C APN: 212-34-962
BK. 1471, PG. 18, M.C.R. &
DOC. 2021-0453381, M.C.R.
(NOT A PART)

NATIONWIDE REALTY
INVESTORS LTD LLC
TRACT G APN: 212-34-966
BK. 1471, PG. 18, M.C.R.
(NOT A PART)

PATENT NO. 53-119887-02
DOC. 2019-0119348, M.C.R.
(NOT A PART)

NWGH LLC
APN: 212-31-120W
(NOT A PART)

NATIONWIDE REALTY
INVESTORS LTD LLC
TRACT H APN: 212-34-967
BK. 1471, PG. 18, M.C.R.
(NOT A PART)

NATIONWIDE REALTY
INVESTORS LTD LLC
TRACT F APN: 212-34-965
BK. 1471, PG. 18, M.C.R.
(NOT A PART)

NATIONWIDE REALTY
INVESTORS LTD LLC
TRACT I APN: 212-34-968
BK. 1471, PG. 18, M.C.R.
(NOT A PART)

NATIONWIDE REALTY
INVESTORS LTD LLC
TRACT J APN: 212-34-969
BK. 1471, PG. 18, M.C.R.
(NOT A PART)

NATIONWIDE REALTY
INVESTORS LTD LLC
TRACT E APN: 212-34-964
BK. 1471, PG. 18, M.C.R.
(NOT A PART)

NATIONWIDE REALTY
INVESTORS LTD LLC
TRACT F APN: 212-34-965
BK. 1471, PG. 18, M.C.R.
(NOT A PART)

NATIONWIDE REALTY INVESTORS LTD LLC
TRACT B APN: 212-34-961
BK. 1471, PG. 18, M.C.R.
(NOT A PART)

NWGH LLC
APN: 212-31-120Q
(NOT A PART)

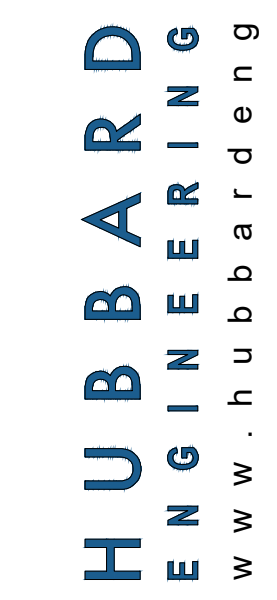
PATENT NO. 53-119887-02
DOC. 2019-0119348, M.C.R.
(NOT A PART)

S. 1/4 CORNER,
SEC. 26, T4N, R4E,
FND. BLM BC

S. LINE, SE 1/4, SEC. 26, T4N, R4E
N89°58'34"W 2640.96'

SE CORNER,
SEC. 26, T4N, R4E,
FND. M.C. BCF
RLS# 33307

1201 S. Alma School Rd.
Suite 2000
Mesa, AZ 85210
Ph: 480.892.3313
www.hubbardingengineering.com



FINAL PLAT
CAVASSON - GRAYHAWK
City of Scottsdale, Maricopa County, Arizona



Date 06/15/21	Project Eng. ADRIAN BURCHAM
Project No. 18114	Project Manager ADRIAN BURCHAM

P:\2018\18114\Survey\2021\18114-FINAL PLAT GRAYHAWK.dwg Jun 15, 2021 - 2:14pm RMB/mfl

N. 1/4 CORNER,
SEC. 26, T4N, R4E,
FND. MARICOPA COUNTY BCF
RLS# 33307

N. LINE, NE 1/4, SEC. 26, T4N, R4E
S89°58'51"E 2641.87'

NE CORNER,
SEC. 26, T4N, R4E,
FND. GLO BC
(DISTURBED)

CURVE TABLE					
CURVE #	DELTA	RADIUS	LENGTH	CHORD	
C1	9°07'35"	729.28'	116.16'	S05°04'29"E 116.04'	
C2	12°03'02"	732.21'	154.00'	S05°03'00"E 153.72'	
C3	34°07'44"	365.00'	217.42'	S55°43'05"W 214.22'	
C4	47°04'28"	400.50'	329.06'	N74°54'55"W 319.88'	
C5	1°49'21"	3785.00'	120.39'	N10°10'07"W 120.38'	
C6	16°23'01"	1500.00'	428.92'	S84°49'54"E 427.46'	
C7	8°03'22"	3730.00'	524.47'	S07°03'06"E 524.03'	

LINE TABLE		
LINE #	BEARING	LENGTH
L1	S11°03'14"E	140.57'
L2	S11°05'42"E	143.34'
L3	S31°49'11"W	36.61'
L4	N51°20'47"W	36.38'
L5	N11°04'47"W	316.01'

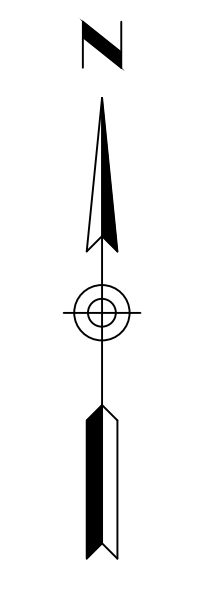
LINE TABLE		
LINE #	BEARING	LENGTH
L6	N37°43'09"E	46.58'
L7	S56°27'11"E	22.77'
L8	N78°55'13"E	55.00'
L9	N11°26'43"E	325.16'

N-S MID-SECTION LINE, SEC. 26, T4N, R4E
S89°57'50"E 2641.99'

CENTER OF SECTION,
SEC. 26, T4N, R4E,
FND. ADOT AC

E. 1/4 CORNER,
SEC. 26, T4N, R4E,
FND. GLO BC

N-S MID-SECTION LINE, SEC. 26, T4N, R4E
N0°02'27"W 2641.61'



LEGEND

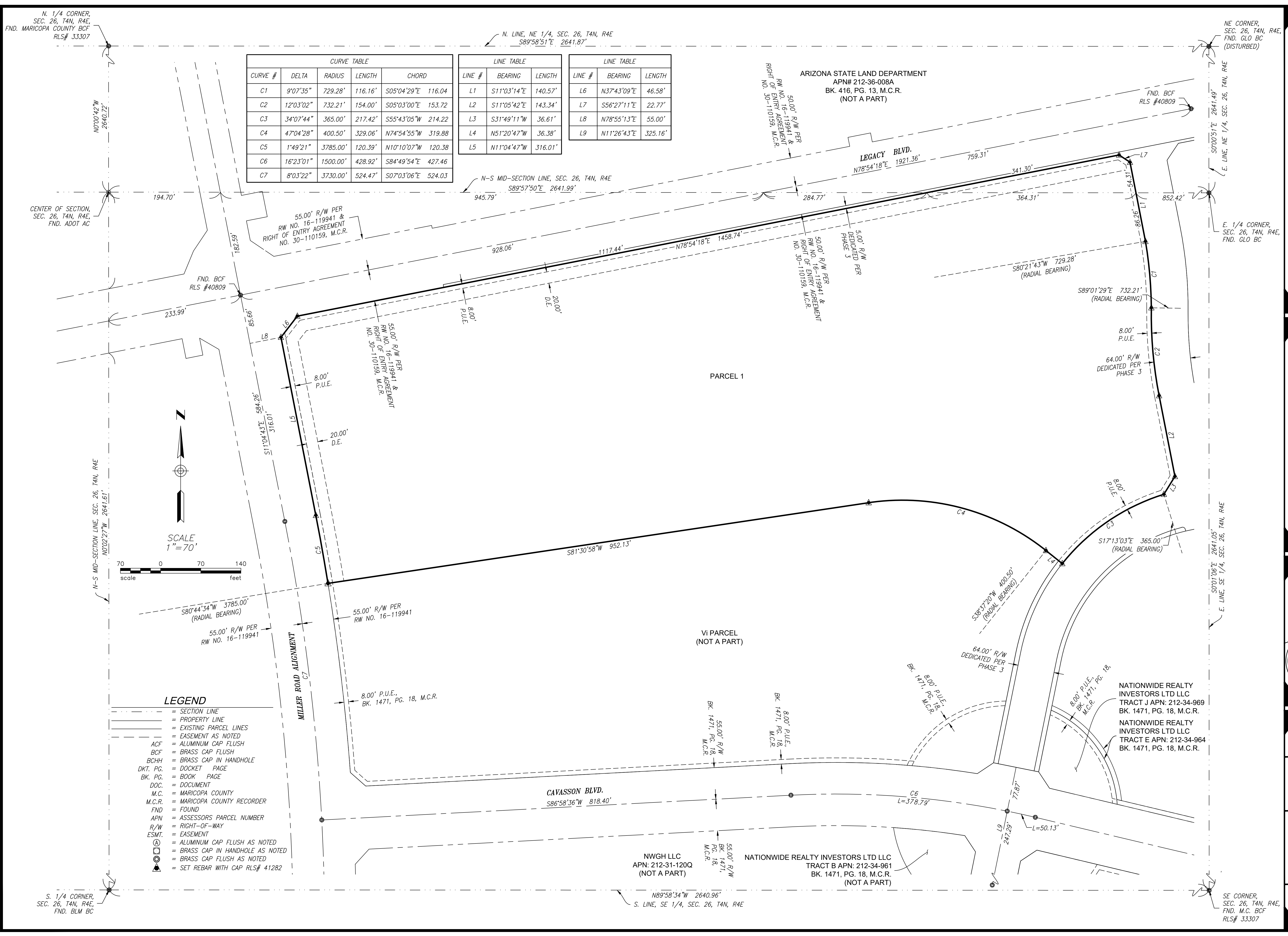
- SECTION LINE
- PROPERTY LINE
- - - EXISTING PARCEL LINES
- - - EASEMENT AS NOTED
- ACF = ALUMINUM CAP FLUSH
- BCF = BRASS CAP FLUSH
- BCHH = BRASS CAP IN HANDHOLE
- DKT. PG. = DOCKET PAGE
- BK. PG. = BOOK PAGE
- DOC. = DOCUMENT
- M.C. = MARICOPA COUNTY
- M.C.R. = MARICOPA COUNTY RECORDER
- FND = FOUND
- APN = ASSESSORS PARCEL NUMBER
- R/W = RIGHT-OF-WAY
- ESMT. = EASEMENT
- ⊙ = ALUMINUM CAP FLUSH AS NOTED
- ⊙ = BRASS CAP IN HANDHOLE AS NOTED
- ⊙ = BRASS CAP FLUSH AS NOTED
- ▲ = SET REBAR WITH CAP RLS# 41282

S. 1/4 CORNER,
SEC. 26, T4N, R4E,
FND. BLM BC

N89°58'34"W 2640.96'
S. LINE, SE 1/4, SEC. 26, T4N, R4E

SE CORNER,
SEC. 26, T4N, R4E,
FND. M.C. BCF
RLS# 33307

P:\2018\18114\Survey\20181114\Survey\FINAL PLAT GRAYHAWK.dwg Jun 15, 2021 - 2:15pm RMBentel



ARIZONA STATE LAND DEPARTMENT
APN# 212-36-008A
BK. 416, PG. 13, M.C.R.
(NOT A PART)

PARCEL 1

VI PARCEL
(NOT A PART)

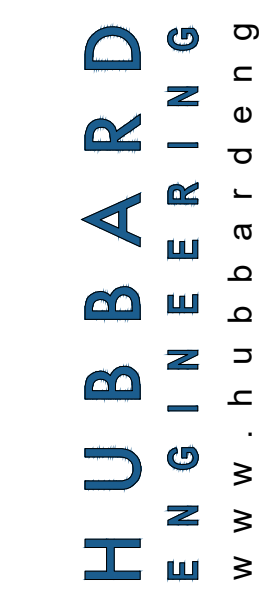
NATIONWIDE REALTY INVESTORS LTD LLC
TRACT J APN: 212-34-969
BK. 1471, PG. 18, M.C.R.

NATIONWIDE REALTY INVESTORS LTD LLC
TRACT E APN: 212-34-964
BK. 1471, PG. 18, M.C.R.

NWGH LLC
APN: 212-31-120Q
(NOT A PART)

NATIONWIDE REALTY INVESTORS LTD LLC
TRACT B APN: 212-34-961
BK. 1471, PG. 18, M.C.R.
(NOT A PART)

1201 S. Alma School Rd.
Phoenix, AZ 85006
Mesd. AZ 85210
Ph: 480.892.3313
www.hubbardengineering.com



FINAL PLAT
CAVASSON - GRAYHAWK
City of Scottsdale, Maricopa County, Arizona



Date	06/15/21	Project Eng.	
Project No.	18114	Project Manager	ADRIAN BURCHAM