



# CONCEPTUAL LANDSCAPE SITE PLAN

SCALE: 1"=60'-0"  
0 15' 30' 60' 120'



## CONCEPTUAL GENERAL NOTES

- CONCEPTUAL LANDSCAPE PLAN IS SCHEMATIC IN NATURE. AT THE TIME OF LANDSCAPE CONSTRUCTION DRAWINGS ACTUAL LOCATIONS, QUANTITIES, SIZES, AND SPECIES SHALL BE DETERMINED AND WILL BE PER CITY CODES.
- ALL TREES USED WITHIN THIS PROJECT SHALL BE NURSERY GROWN OR SALVAGED FROM ON SITE. EXACT LOCATIONS AND QUANTITIES SHALL BE DETERMINED ON LANDSCAPE CONSTRUCTION DRAWINGS. ALL EXISTING TREES SHALL BE PROTECTED DURING CONSTRUCTION.
- ALL LANDSCAPE AREAS SHALL RECEIVE AN AUTOMATIC IRRIGATION SYSTEM.
- ALL PLANT MATERIAL SHALL BE INSTALLED PER CITY REQUIREMENTS. PLANT MATERIAL INSTALLED WITHIN SIGHT DISTANCE TRIANGLES SHALL BE OF A SPECIES THAT DOES NOT GROW TO A HEIGHT OF MORE THAN 30' AND SHALL BE MAINTAINED PER CITY REQUIREMENTS.
- ALL NON-TURF AREAS SHALL RECEIVE A 2" DEPTH OF DECOMPOSED GRANITE.
- THE RETENTION SHOWN ON THE PLANS IS CONCEPTUAL IN NATURE. REFER TO THE ENGINEERING PLANS FOR ACTUAL GRADING AND DRAINAGE CONFIGURATIONS.
- ALL EARTHWORK WILL BE DONE TO DRAIN AWAY FROM SIDEWALKS AND STRUCTURES.
- ADDITIONAL PLANT MATERIAL MAY BE INTRODUCED AS DIFFERENT VARIETIES BECOME AVAILABLE THROUGH LOCAL NURSERIES AND IF THEY ARE CONSISTENT WITH THE OVERALL THEME OF THIS PROJECT.

| WATER INTENSIVE LANDSCAPE CALCULATIONS                 |                                       |
|--|---------------------------------------|
| PERMITTED  | PROVIDED                              |
| (3,000 SF. x 0.10) + (217,000 SF. x 0.05) = 11,750 SF. | (319 x 5 SF. OF COVERAGE) = 8,375 SF. |

## PLANT SCHEDULE

| SYMBOL                     | BOTANICAL NAME                   | COMMON NAME              | SIZE               | QTY |
|----------------------------|----------------------------------|--------------------------|--------------------|-----|
| <b>TREES/PALMS</b>         |                                  |                          |                    |     |
| ⊙                          | Acacia salicina                  | Willow Acacia            | 24" Box 15" Gal.   | 83  |
| ⊙                          | Caesalpinia cacalaco 'Smoothie'  | Thornless Cascalote      | 36" Box 2" Gal.    | 36  |
| ⊙                          | Caesalpinia mexicana             | Mexican Bird of Paradise | 24" Box 15" Gal.   | 40  |
| ⊙                          | Cercidium floridum               | Blue Palo Verde          | 36" Box 2.25" Gal. | 22  |
| ⊙                          | Cercidium hybrid 'Desert Museum' | Desert Museum Palo Verde | 24" Box 15" Gal.   | 35  |
| ⊙                          | Chitalpa tashkentensis           | Chitalpa                 | 36" Box 2.5" Gal.  | 43  |
| ⊙                          | Chilopsis linearis               | Desert Willow            | 24" Box 15" Gal.   | 24  |
| ⊙                          | Olneya tesota                    | Ironwood                 | 48" Box 5" Gal.    | 6   |
| ⊙                          | Phoenix dactylifera              | Date Palm                | 22" C.T.H.         | 21  |
| ⊙                          | Pithecellobium flexicaule        | Texas Ebony              | 24" Box 15" Gal.   | 30  |
| ⊙                          | Prosopis velutina                | Velvet Mesquite          | 36" Box 2.5" Gal.  | 38  |
| ⊙                          | Quercus virginiana 'Cathedral'   | Cathedral Live Oak       | 36" Box 2.5" Gal.  | 83  |
| ⊙                          | Sophora secundiflora             | Texas Mountain Laurel    | 36" Box 2" Gal.    | 13  |
| ⊙                          | Salvage Tree                     | Species Vary             | Varies             | TBD |
| <b>ACCENTS &amp; VINES</b> |                                  |                          |                    |     |
| ⊙                          | Aloe barbadensis                 | Medicinal Aloe           | 5-Gal              | 370 |
| ⊙                          | Aloe x 'Blue Elf'                | Blue Elf Aloe            | 5-Gal              | 21  |
| ⊙                          | Bougainvillea 'Eliana Karst'     | Vine Bougainvillea       | 15-Gal             | 36  |
| ⊙                          | Bignonia capreolata              | Tangerine Beauty         | 15-Gal             | 33  |
| ⊙                          | Dasyliion longissimum            | Toothless Spoon          | 5-Gal              | 207 |
| ⊙                          | Fouquieria splendens             | Ocotillo                 | Ht. Vary           | 13  |
| ⊙                          | Hesperaloe parviflora            | Red Hesperaloe           | 5-Gal              | 12  |
| ⊙                          | Hesperaloe parviflora 'Yellow'   | Yellow Hesperaloe        | 5-Gal              | 13  |
| ⊙                          | Hesperaloe parviflora 'Fiesta'   | Brakelights Hesperaloe   | 5-Gal              | 212 |
| ⊙                          | Pedicularis macrocarpus          | Lady Slipper Plant       | 5-Gal              | 33  |
| ⊙                          | Tecoma x 'Orange Jubilee'        | Orange Jubilee Vine      | 15-Gal             | 25  |
| ⊙                          | Salvage Accent                   | Species Vary             | Varies             |     |

|                      |                                       |                          |         |     |
|----------------------|---------------------------------------|--------------------------|---------|-----|
| <b>SHRUBS</b>        |                                       |                          |         |     |
| ⊙                    | Bougainvillea 'Torch Glow'            | Torch Glow Bougainvillea | 5-Gal   | 274 |
| ⊙                    | Bougainvillea 'Alexandra'             | Alexandra Bougainvillea  | 5-Gal   | 409 |
| ⊙                    | Cordia parvifolia                     | Little Leaf Cordia       | 5-Gal   | 61  |
| ⊙                    | Dodonaea viscosa 'Purpurea'           | Purple Hopseed Bush      | 5-Gal   | 201 |
| ⊙                    | Eremophila hygrophana                 | Blue Belle               | 5-Gal   | 711 |
| ⊙                    | Ericameria laricifolia                | Turpentine Bush          | 5-Gal   | 110 |
| ⊙                    | Justicia spicigera                    | Mexican Honeysockle      | 5-Gal   | 34  |
| ⊙                    | Leucophyllum frutescens 'Green Cloud' | Green Cloud Sage         | 5-Gal   | 34  |
| ⊙                    | Leucophyllum langmaniae 'Rio Bravo'   | Rio Bravo Sage           | 5-Gal   | 171 |
| ⊙                    | Myrtus communis 'Compacta'            | Dwarf Myrtle             | 5-Gal   | 122 |
| ⊙                    | Olea europaea 'Montra'                | Dwarf Olive              | 5-Gal   | 126 |
| ⊙                    | Ruellia peninsularis                  | Baja Ruellia             | 5-Gal   | 326 |
| ⊙                    | Salvia clevelandii                    | Cleveland Sage           | 5-Gal   | 24  |
| ⊙                    | Simmondsia chinensis                  | Jojoba                   | 5-Gal   | 27  |
| ⊙                    | Tecoma stans                          | Yellow Bells             | 5-Gal   | 186 |
| ⊙                    | Tecoma x 'Bells of Fire'              | Bells of Fire            | 5-Gal   | 284 |
| ⊙                    | Tecoma x 'Orange Jubilee'             | Orange Jubilee           | 5-Gal   | 23  |
| <b>GROUND COVERS</b> |                                       |                          |         |     |
| ⊙                    | Callitemon 'Little John'              | Little John Bottlebrush  | 1-Gal   | 292 |
| ⊙                    | Eremophila glabra 'Mindensau Gold'    | Outback Sunrise Emu      | 1-Gal   | 557 |
| ⊙                    | Eremophila glabra 'Carnosa'           | Winter Blaze Emu         | 1-Gal   | 231 |
| ⊙                    | Lantana 'Dallas Red'                  | Dallas Red Lantana       | 1-Gal   | 24  |
| ⊙                    | Lantana 'New Gold'                    | New Gold Lantana         | 1-Gal   | 336 |
| ⊙                    | Lantana montevidensis                 | Purple Lantana           | 1-Gal   | 460 |
| ⊙                    | Lantana montevidensis                 | White Lantana            | 1-Gal   | 125 |
| ⊙                    | Teucrium chamaedrys 'Prostratum'      | Prostrate Germander      | 1-Gal   | 117 |
| <b>MISCELLANEOUS</b> |                                       |                          |         |     |
| ⊙                    | Seasonal Annuals                      | Seasonal Annuals         | 4" Pots | 310 |

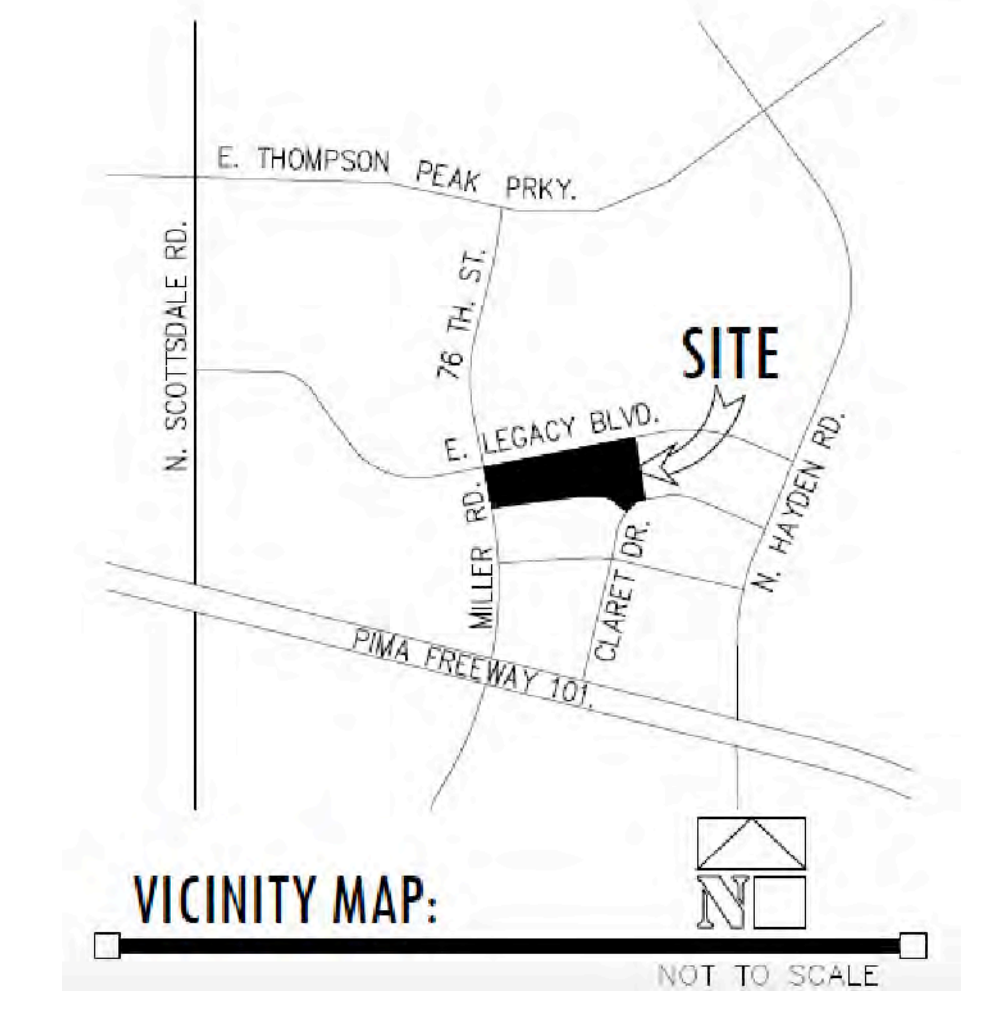
- Decomposed Granite, 'Express Gold' 1/2" Screened, 2" depth in all planting areas - 193,600 SQ. FT.
- Mid-Iron Hybrid Sod, Interior Site - 22,445 SQ. FT. with Concrete Header - 1,525 L.F. (Including annuals border)
- Synthetic Turf - Coronado Platinum (100 oz.) by Arizona Artificial Lawns or Approved Equal - 15,560 SQ. FT.

## PROJECT DATA TABLE

| ROW, LANDSCAPE ON-SITE LANDSCAPE PARKING LOT LANDSCAPE | BY OTHERS            |
|--|----------------------|
|  | \$194,119 SF.        |
|  | \$27,486 SF.         |
| <b>TOTAL LANDSCAPE</b>                                 | <b>\$221,605 SF.</b> |

## ADDITIONAL NOTE

All proposed plant material used (excluding Lawn Areas and Active Turf Recreation Areas) is included in low water-use plants listed on the ADWR most current low water use plant list per Scottsdale Zoning Code. Refer to Chapter 49/Article VII/Division I/Section 49-246-Limitation on water intensive landscape/turf acreage for new commercial users, new industrial users and common areas of residential developments.



## VICINITY MAP:

NOT TO SCALE

# GRAYHAWK RESIDENCES AT CAVASSON

7701 E. LEGACY BOULEVARD  
SCOTTSDALE, AZ 85255

Office of Rich Barber  
**ORB** Architecture, LLC  
WorldHQ@ORBArch.com



EXPIRES 06 / 30 / 2022



COLLABORATIVE V DESIGN STUDIO INC.  
7116 EAST 1ST AVENUE, SUITE 103  
SCOTTSDALE, ARIZONA 85251  
OFFICE: 480-347-0590  
FAX: 480-656-6012

## REVISIONS

- △ CITY COMMENTS 09/23/2021
- △
- △
- △
- △
- △
- △
- △
- △
- △

## DRB SUBMITTAL

DATE: SEPTEMBER 23, 2021 ORB # 20-204

# CLS-1

CONCEPTUAL LANDSCAPE SITE PLAN

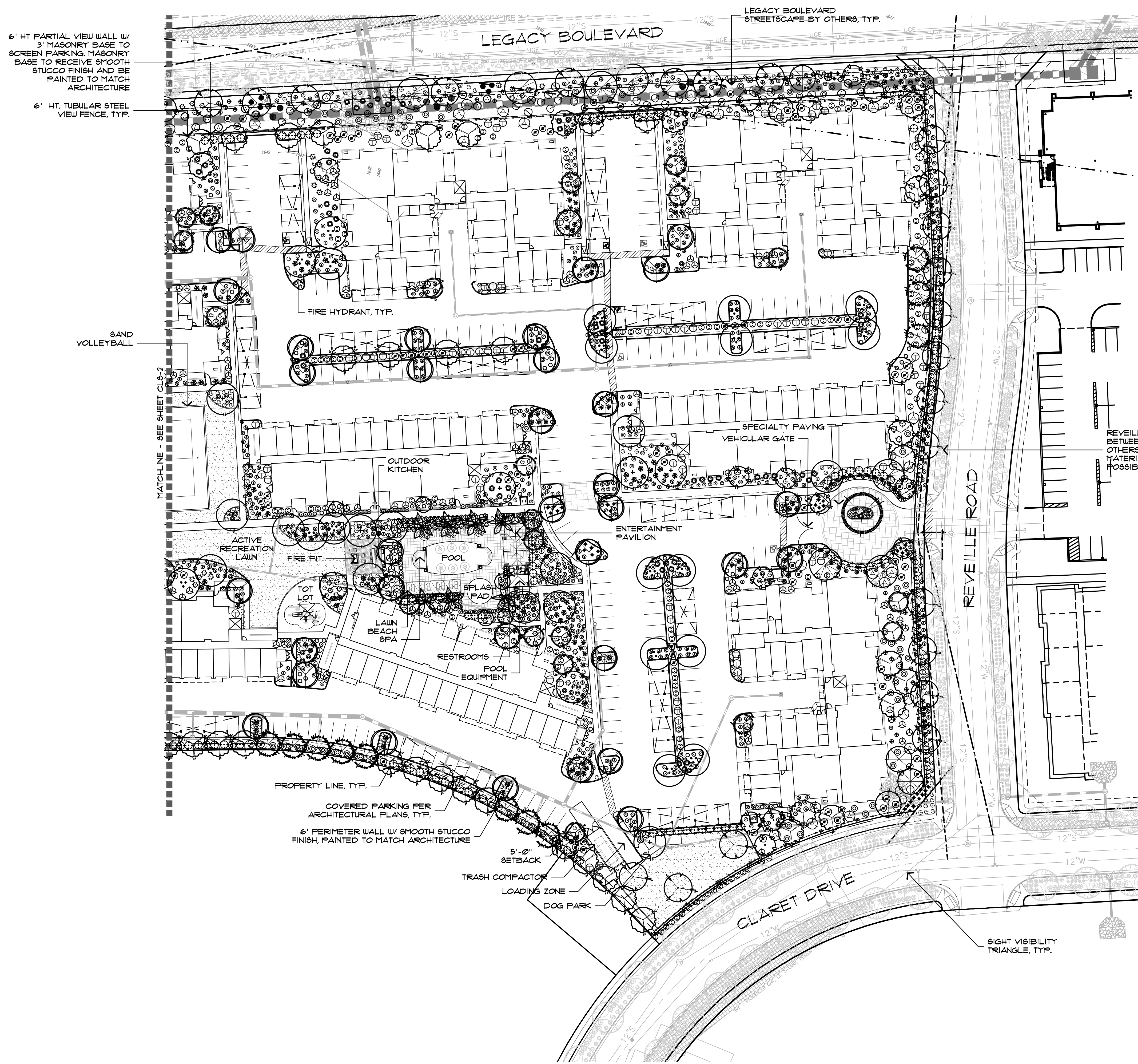
FILE: /Users/collaborative V Dropbox/Landscape/Alliance Residential/01 Residences at Cavasson/ORB Submittal/01 Residences at Cavasson - CLS1.dwg USER: collaborative V DATE: Sep. 22 2021 TIME: 04:26 pm







FILE: /Users/collaborative3/Desktop/Landscape/Alliance Residential/CH Residences at Cavasson/ORB Submitted/CH Residences at Cavasson - CLS1.dwg USER: collaborative3 DATE: Sep, 22 2021 TIME: 04:28 pm



**CONCEPTUAL LANDSCAPE PLAN (EAST)**  
 SCALE: 1" = 40'-0"  
 0 10' 20' 40' 80' NORTH

**PLANT SCHEDULE**

| SYMBOL                     | BOTANICAL NAME   | COMMON NAME              | SIZE         | QTY                                     |
|----------------------------|--|--------------------------|--------------|---|
| <b>TREES/PALMS</b>         |  |                          |              |   |
| ○                          | Acacia salicina  | Willow Acacia            | 24" Box      | 83                                      |
| ○                          | Casualpinia calalaco 'Smoothie'  | Thornless Cascalote      | 36" Box      | 36                                      |
| ○                          | Casualpinia mexicana   | Mexican Bird of Paradise | 21" Cal.     | 40                                      |
| ○                          | Cercidium floridum   | Blue Palo Verde          | 15" Box      | 22                                      |
| ○                          | Cercidium hybrid 'Desert Museum'   | Desert Museum Palo Verde | 24" Box      | 35                                      |
| ○                          | Chitalpa taahkentensis   | Chitalpa                 | 22 1/2" Cal. | 23                                      |
| ○                          | Chilopsis linearis   | Desert Willow            | 24" Box      | 44                                      |
| ○                          | Olneya tesota  | Ironwood                 | 15" Cal.     | 6                                       |
| ○                          | Phoenix dactylifera  | Date Palm                | 22' C.T.H.   | 21                                      |
| ○                          | Pithecellobium flexicaule  | Texas Ebony              | 24" Box      | 30                                      |
| ○                          | Prosopis velutina  | Velvet Mesquite          | 15" Cal.     | 38                                      |
| ○                          | Quercus virginiana 'Cathedral'   | Cathedral Live Oak       | 24" Box      | 83                                      |
| ○                          | Sophora secundiflora   | Texas Mountain Laurel    | 25" Cal.     | 13                                      |
| ○                          | Salvage Tree   | Species Vary             | Varies       | TBD                                     |
| <b>ACCENTS &amp; VINES</b> |  |                          |              |   |
| ○                          | Aloe barbedensis   | Medicinal Aloe           | 5-Gal        | 370                                     |
| ○                          | Aloe x 'Blue Elf'  | Blue Elf Aloe            | 5-Gal        | 21                                      |
| ○                          | Bougainvillea 'Euforia Karst'  | Vine Bougainvillea       | 15-Gal       | 36                                      |
| ○                          | Bignonia capreolata  | Tangerine Beauty         | 15-Gal       | 33                                      |
| ○                          | Dasythron longissimum  | Toothless Spoon          | 5-Gal        | 207                                     |
| ○                          | Fouquieria splendens   | Ocotillo                 | Ht. Vary     | 13                                      |
| ○                          | Hesperaloe parviflora  | Red Hesperaloe           | 5-Gal        | 72                                      |
| ○                          | Hesperaloe parviflora 'Yellow'   | Yellow Hesperaloe        | 5-Gal        | 13                                      |
| ○                          | Hesperaloe parviflora  | Brakslights Hesperaloe   | 5-Gal        | 212                                     |
| ○                          | Pedilanthus macrocarpus  | Lady Slipper Plant       | 5-Gal        | 33                                      |
| ○                          | Tecoma x 'Orange Jubilee'  | Orange Jubilee Vine      | 15-Gal       | 25                                      |
| ○                          | Salvage Accent   | Species Vary             | Varies       |   |
| <b>SHRUBS</b>              |  |                          |              |   |
| ○                          | Bougainvillea 'Torch Glow'   | Torch Glow Bougainvillea | 5-Gal        | 274                                     |
| ○                          | Bougainvillea 'Alexandra'  | Alexandra Bougainvillea  | 5-Gal        | 409                                     |
| ○                          | Cordia parvifolia  | Little Leaf Cordia       | 5-Gal        | 61                                      |
| ○                          | Dodonaea viscosa 'Furcraea Karst'  | Purple Hopseed Bush      | 5-Gal        | 201                                     |
| ○                          | Eremophila hydropapha  | Blue Bells               | 5-Gal        | 171                                     |
| ○                          | Ericameria laricifolia   | Turpentine Bush          | 5-Gal        | 110                                     |
| ○                          | Justicia spicigera   | Mexican Honeysuckle      | 5-Gal        | 34                                      |
| ○                          | Leucophyllum frutescens 'Green Cloud'  | Green Cloud Sage         | 5-Gal        | 34                                      |
| ○                          | Leucophyllum langmaniae 'Rio Bravo'  | Rio Bravo Sage           | 5-Gal        | 171                                     |
| ○                          | Mirtus communis 'Compacta'   | Dwarf Myrtle             | 5-Gal        | 122                                     |
| ○                          | Olea europaea 'Montra'   | Dwarf Olive              | 5-Gal        | 126                                     |
| ○                          | Ruellia peninsularis   | Baja Ruellia             | 5-Gal        | 326                                     |
| ○                          | Salvia clevelandii   | Cleveland Sage           | 5-Gal        | 24                                      |
| ○                          | Simmondsia chinensis   | Jojoba                   | 5-Gal        | 21                                      |
| ○                          | Tecoma stans   | Yellow Bells             | 5-Gal        | 186                                     |
| ○                          | Tecoma x 'Bells of Fire'   | Bells of Fire            | 5-Gal        | 284                                     |
| ○                          | Tecoma x 'Orange Jubilee'  | Orange Jubilee           | 5-Gal        | 23                                      |
| <b>GROUND COVERS</b>       |  |                          |              |   |
| ○                          | Callistemon 'Little John'  | Little John Bottlebrush  | 1-Gal        | 292                                     |
| ○                          | Eremophila glabra 'Mindeneu Gold'  | Outback Sunrise Emu      | 1-Gal        | 557                                     |
| ○                          | Eremophila glabra 'Garnica'  | Winter Blaze Emu         | 1-Gal        | 231                                     |
| ○                          | Lantana 'Dallas Red'   | Dallas Red Lantana       | 1-Gal        | 24                                      |
| ○                          | Lantana 'New Gold'   | New Gold Lantana         | 1-Gal        | 336                                     |
| ○                          | Lantana montevidensis  | Purple Lantana           | 1-Gal        | 460                                     |
| ○                          | Lantana montevidensis  | White Lantana            | 1-Gal        | 125                                     |
| ○                          | Teucrium chamaedrys 'Prostratum'   | Prostrate Germander      | 1-Gal        | 117                                     |
| <b>MISCELLANEOUS</b>       |  |                          |              |   |
| ○                          | Seasonal Annuals   | Seasonal Annuals         | 4" Pots      | 310                                     |
| ○                          | Decomposed Granite, 'Express Gold' 1/2" Screened, 2" depth in all planting areas           |                          |              | \$193,600 SQ. FT.                       |
| ○                          | Mid-Iron Hybrid Sod, Interior Site   |                          |              | \$22,445 SQ. FT.                        |
| ○                          | with Concrete Header   |                          |              | \$1,525 L.F. (Including annuals border) |
| ○                          | Synthetic Turf - Coronado Platinum (100 oz.) by Arizona Artificial Lawns or Approved Equal |                          |              | \$5,560 SQ. FT.                         |

**PROJECT DATA TABLE**

| ROW | LANDSCAPE             | BY OTHERS      |
|-----|-----------------------|----------------|
|     | ON-SITE LANDSCAPE     | \$194,119 S.F. |
|     | PARKING LOT LANDSCAPE | \$21,486 S.F.  |
|     | TOTAL LANDSCAPE       | \$221,605 S.F. |

**ADDITIONAL NOTE**

All proposed plant material used (excluding Lawn Areas and Active Turf Recreation Areas) is included in low water-use plants listed on the ADWR most current low water use plant list per Scottsdale Zoning Code. Refer to Chapter 49/Article VII/Division 1/Section 49-246-Limitation on water intensive landscape/turf acreage for new commercial users, new industrial users and common areas of residential developments.

**GRAYHAWK RESIDENCES AT CAVASSON**  
 7701 E. LEGACY BOULEVARD  
 SCOTTSDALE, AZ 85255

Office of Rich Barber  
**ORB** Architecture, LLC  
 WorldHQ@ORBArch.com



EXPIRES 06/30/2022

**Grayhawk Development**

COLLABORATIVE V  
**DESIGN STUDIO INC.**  
 7116 EAST 1ST AVENUE, SUITE 103  
 SCOTTSDALE, ARIZONA 85251  
 OFFICE: 480-347-0590  
 FAX: 480-656-6012

**REVISIONS**

- ▲ CITY COMMENTS 09/23/2021
- ▲
- ▲
- ▲
- ▲
- ▲
- ▲
- ▲

**DRB SUBMITTAL**

DATE: SEPTEMBER 23, 2021 ORB # 20-204

**CLS-3**

CONCEPTUAL LANDSCAPE PLAN