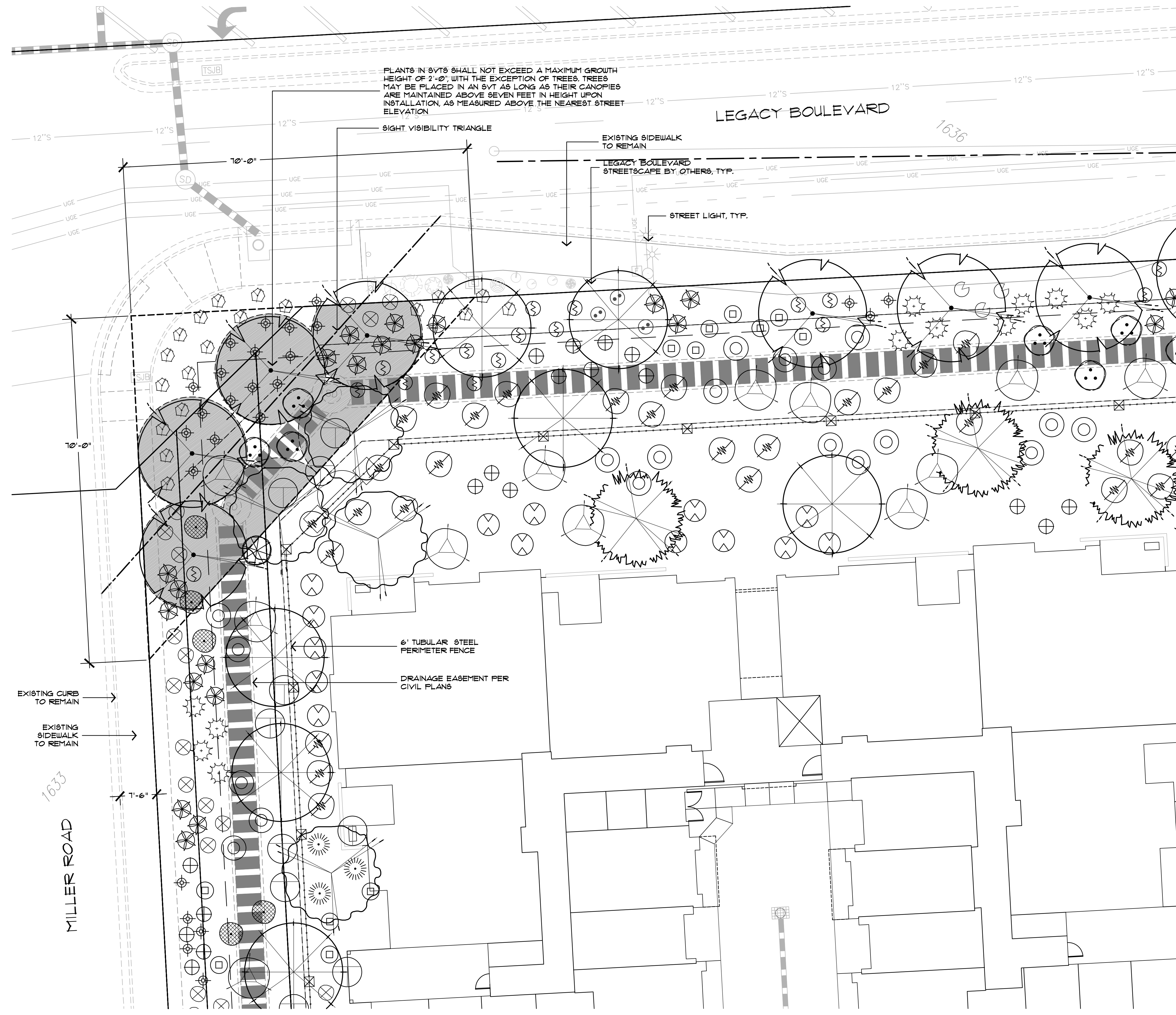


FILE: /Users/collaborative3/Desktop/Landscape/Alliance Residential/CH Residences at Cavasson - CLS1.dwg USER: collaborative3 DATE: Sep, 22 2021 TIME: 04:46 pm



PLANTS IN SVTS SHALL NOT EXCEED A MAXIMUM GROWTH HEIGHT OF 2'-0" WITH THE EXCEPTION OF TREES. TREES MAY BE PLACED IN AN SVT AS LONG AS THEIR CANOPIES ARE MAINTAINED ABOVE SEVEN FEET IN HEIGHT UPON INSTALLATION, AS MEASURED ABOVE THE NEAREST STREET ELEVATION.

LEGACY BOULEVARD

1636

6' TUBULAR STEEL PERIMETER FENCE
DRAINAGE EASEMENT PER CIVIL PLANS

EXISTING CURB TO REMAIN
EXISTING SIDEWALK TO REMAIN

1633
MILLER ROAD

SIGNATURE INTERSECTION SHADE EXHIBIT
SCALE: 1"=10'-0"



PLANT SCHEDULE

SYMBOL	BOTANICAL NAME	COMMON NAME	SIZE	QTY
TREES/PALMS				
	Acacia salicina	Willow Acacia	24" Box	83
	Caesalpinia cacalaco 'Smoothie'	Thornless Cascalote	15" Gal.	36
	Caesalpinia mexicana	Mexican Bird of Paradise	36" Box	40
	Cercidium floridum	Blue Palo Verde	24" Box	22
	Cercidium hybrid 'Desert Museum'	Desert Museum Palo Verde	15" Gal.	35
	Chitalpa taahkentensis	Chitalpa	22.5" Gal.	23
	Chilopsis linearis	Desert Willow	24" Box	44
	Olneya tesota	Ironwood	25" Gal.	4
	Phoenix dactylifera	Date Palm	48" Box	21
	Pithecellobium flexicaule	Texas Ebony	22' C.T.H.	30
	Prosopis velutina	Velvet Mesquite	15" Gal.	38
	Quercus virginiana 'Cathedral'	Cathedral Live Oak	36" Box	83
	Sophora secundiflora	Texas Mountain Laurel	25" Gal.	13
	Salvage Tree	Species Vary	36" Box	TBD
ACCENTS & VINES				
	Aloe barbadensis	Medicinal Aloe	5-Gal	370
	Aloe x 'Blue Elf'	Blue Elf Aloe	5-Gal	21
	Bougainvillea 'Euphonia Karst'	Vine Bougainvillea	15-Gal	36
	Bignonia capreolata	Tangerine Beauty	15-Gal	33
	Dasylirion longissimum	Toothless Spoon	5-Gal	207
	Fouquieria splendens	Ocotillo	Ht. Vary	13
	Hesperaloe parviflora	Red Hesperaloe	5-Gal	72
	Hesperaloe parviflora	Yellow Hesperaloe	5-Gal	13
	Hesperaloe parviflora	Brakelights Hesperaloe	5-Gal	212
	Pedicularis macrocarpus	Lady Slipper Plant	5-Gal	33
	Tecoma x 'Orange Jubilee'	Orange Jubilee Vine	15-Gal	25
	Salvage Accent	Species Vary	Varies	
SHRUBS				
	Bougainvillea 'Torch Glow'	Torch Glow Bougainvillea	5-Gal	274
	Bougainvillea 'Alexandra'	Alexandra Bougainvillea	5-Gal	409
	Cordia parvifolia	Little Leaf Cordia	5-Gal	61
	Dodonaea viscosa	Purple Hopseed Bush	5-Gal	201
	Eremophila hygrophana	Blue Bells	5-Gal	171
	Ericameria laricifolia	Turpentine Bush	5-Gal	110
	Justicia spicigera	Mexican Honeysuckle	5-Gal	34
	Leucophyllum frutescens	Green Cloud Sage	5-Gal	34
	Leucophyllum langmaniae	Rio Bravo Sage	5-Gal	171
	Myrtus communis	Dwarf Myrtle	5-Gal	122
	Olea europaea 'Montra'	Dwarf Olive	5-Gal	126
	Ruellia peninsularis	Baja Ruellia	5-Gal	326
	Salvia clevelandii	Cleveland Sage	5-Gal	24
	Simmondsia chinensis	JoJoba	5-Gal	21
	Tecoma stans	Yellow Bells	5-Gal	186
	Tecoma x 'Bells of Fire'	Bells of Fire	5-Gal	284
	Tecoma x 'Orange Jubilee'	Orange Jubilee	5-Gal	23
GROUND COVERS				
	Callistemon 'Little John'	Little John Bottlebrush	1-Gal	292
	Eremophila glabra	Outback Sunrise Emu	1-Gal	557
	Eremophila glabra 'Garrica'	Winter Blaze Emu	1-Gal	231
	Lantana 'Dallas Red'	Dallas Red Lantana	1-Gal	24
	Lantana 'New Gold'	New Gold Lantana	1-Gal	336
	Lantana montevidensis	Purple Lantana	1-Gal	460
	Lantana montevidensis	White Lantana	1-Gal	125
	Teucrium chamaedrys 'Prostratum'	Prostrate Germander	1-Gal	117
MISCELLANEOUS				
	Seasonal Annuals	Seasonal Annuals	4" Pots	310
	Decomposed Granite, 'Express Gold'			
	1/2" Screened, 2" depth in all planting areas -	\$193.600 SQ. FT.		
	Mid-Iron Hybrid Sod, Interior Site -	\$22,445.50 SQ. FT.		
	Synthetic Turf - Coronado Platinum (100 oz.) by Arizona Artificial Lawns or Approved Equal -	\$1,525 L.F. (Including annuals border)		
	Synthetic Turf - Coronado Platinum (100 oz.) by Arizona Artificial Lawns or Approved Equal -	\$5.560 SQ. FT.		

SIGNATURE INTERSECTION SHADE REQUIREMENTS

CORNER AREA (70'x70')	2,450 S.F.
REQUIRED SHADE (50%)	1,225 S.F.
SHADE PROVIDED (74%)	1,822 S.F.

GRAYHAWK RESIDENCES AT CAVASSON
7701 E. LEGACY BOULEVARD
SCOTTSDALE, AZ 85255

Office of Rich Barber
ORB Architecture, LLC
WorldHQ@ORBArch.com



EXPIRES 06 / 30 / 2022

Grayhawk Development

COLLABORATIVE V DESIGN STUDIO INC.
7116 EAST 1ST AVENUE, SUITE 103
SCOTTSDALE, ARIZONA 85251
OFFICE: 480-347-0590
FAX: 480-656-6012

REVISIONS

▲ CITY COMMENTS 09/23/2021

▲

▲

▲

▲

▲

▲

▲

DRB SUBMITTAL

DATE: SEPTEMBER 23, 2021 ORB # 20-204

CLS-6
CONCEPTUAL LANDSCAPE PLAN