

GRAYHAWK RESIDENCES AT CAVASSON

7701 E. LEGACY BOULEVARD
SCOTTSDALE, AZ 85255



WorldHQ@ORBArch.com

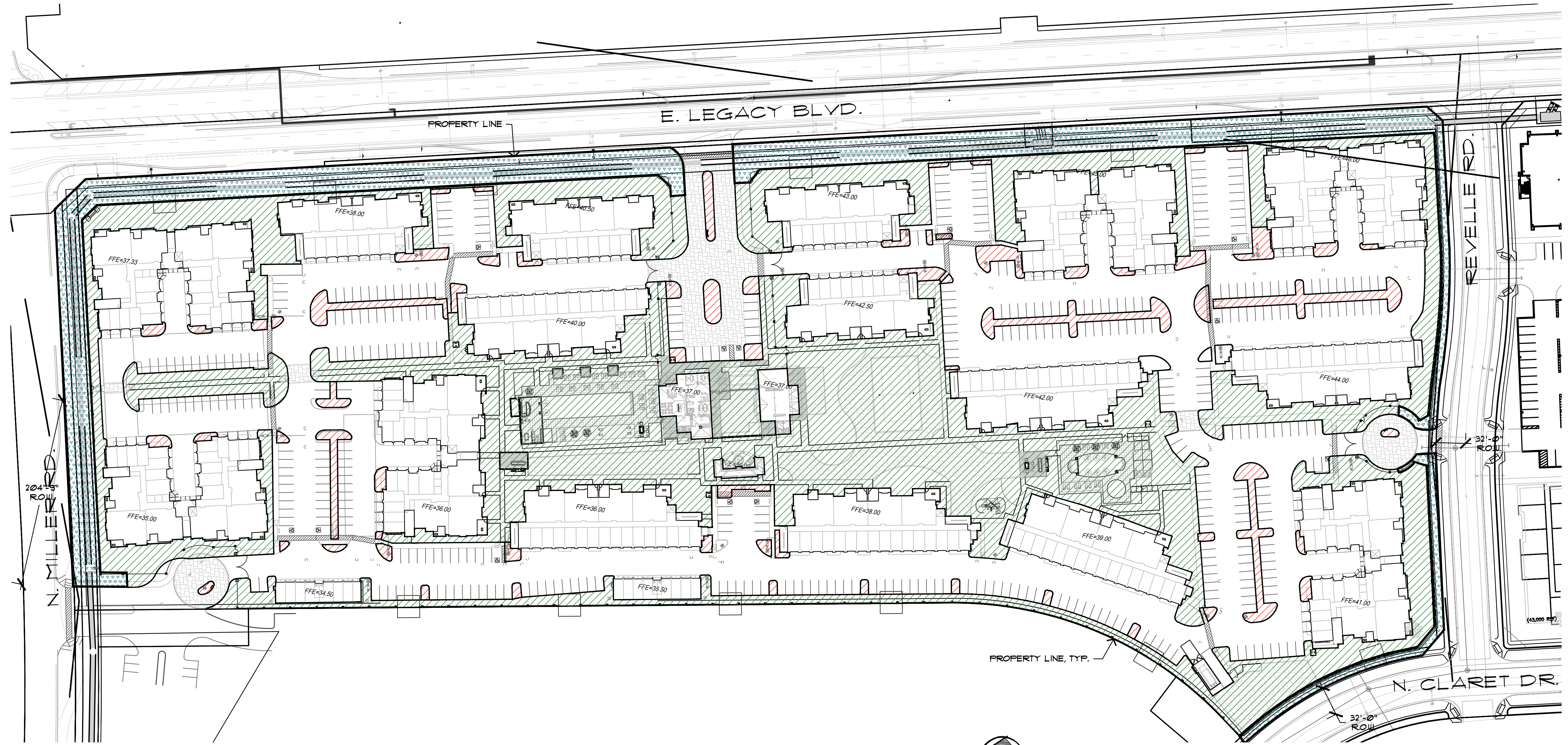


EXPIRES 06 / 30 / 2022



Collaborative V
Design Studio Inc.
7116 East 1st Avenue,
Suite 103
Scottsdale, Arizona
85251
office: 480-347-0590
fax: 480-656-6012

FILE: /Users/collaborative V Desktop/Landscape/Residential/Grayhawk Residences at Cavasson/ORB Submitted/Grayhawk Residences at Cavasson - Open Space.dwg USER: collaborative3 DATE: Sep. 22. 2021 TIME: 05:11 pm



OPEN SPACE PLAN

SCALE: 1"=60'-0"

LANDSCAPE AREA

| LANDSCAPE AREA | |
|------------------------|-----------------|
| NET SITE AREA : | 784,286 SQ. FT. |
| TOTAL LANDSCAPE AREA : | 219,328 SQ. FT. |

| PARKING AREA | |
|---|----------------------|
| PARKING AREA : | 233,911 SQ. FT. |
| PARKING LANDSCAPE AREA REQUIRED (10%) : | 23,398 SQ. FT. |
| PARKING LANDSCAPE AREA PROVIDED : | 21,486 SQ. FT. (12%) |

OPEN SPACE AREA

| OPEN SPACE REQUIRED | |
|------------------------------------|-----------------------|
| NET SITE AREA : | 784,286 SQ. FT. |
| REQUIRED COMMON OPEN SPACE (25%) : | 196,071 SQ. FT. |
| COMMON OPEN SPACE PROVIDED : | 221,321 SQ. FT. (28%) |

LOCATIONS SHOWN ON OPEN SPACE PLAN

| | |
|--|--|
| | COMMON OPEN SPACE 221,321 SQ. FT. |
| | PARKING LOT LANDSCAPE AREA 21,486 SQ. FT. |
| | FRONT OPEN SPACE 63,441 SQ. FT. |

REVISIONS

| NO. | DESCRIPTION | DATE |
|-----|--------------------------|------|
| 1 | CITY COMMENTS 09/23/2021 | |
| | | |
| | | |
| | | |
| | | |
| | | |
| | | |
| | | |
| | | |
| | | |

DRB SUBMITTAL

DATE: SEPTEMBER 23, 2021 ORB # 20-204

OSP-1

OPEN SPACE PLAN