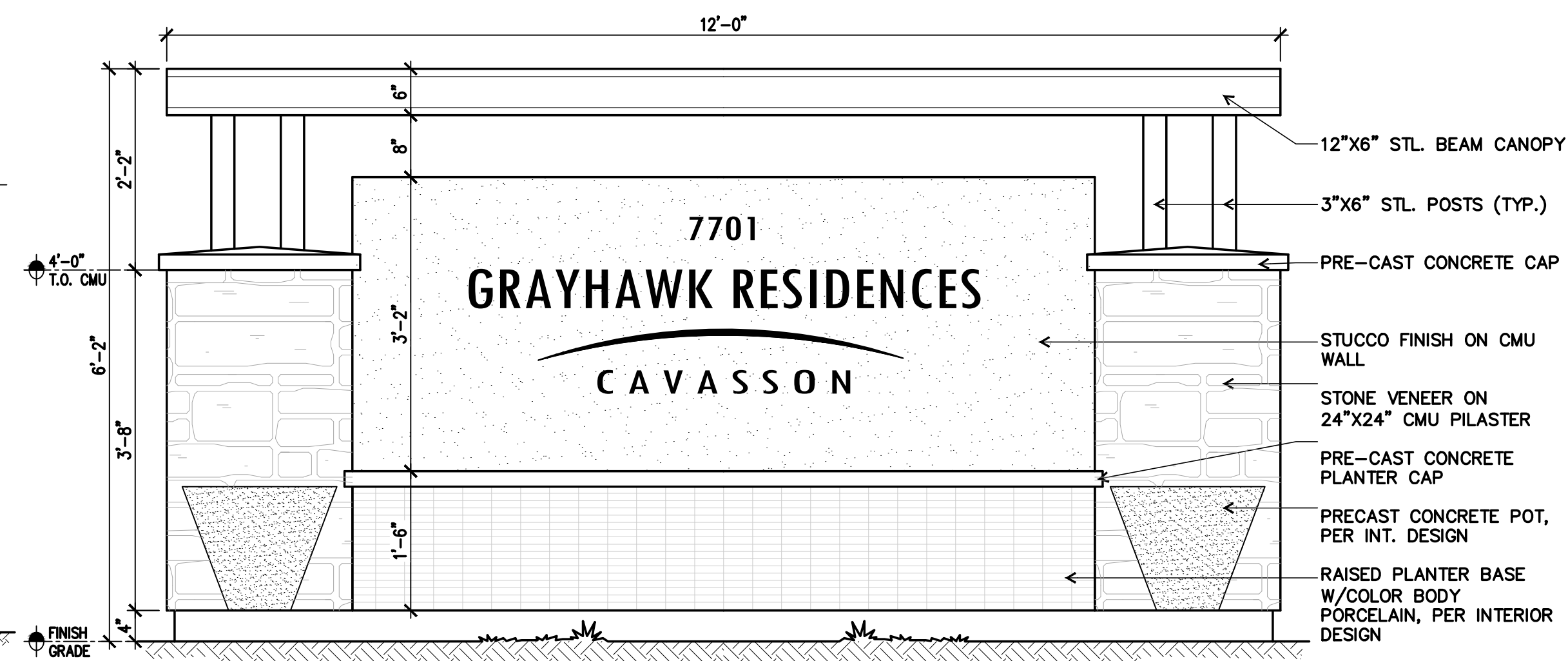


**COLOR NOTES:**  
 PRE-CAST CONCRETE CAP/BAND COLOR - DAVIS, PEWTER 860  
 PAINT STEEL FENCE/GATE/FRAME COLOR - DUNN EDWARDS 6378 JET  
 STONE VENEER - SLOSTICE "IRONWOOD" LEDGESTONE  
 STUCCO FINISH COLOR - DUNN EDWARDS DE6213 "FINE GRAIN"

**13 PILASTER AT TUBULAR STEEL FENCE**

SCALE: 1/2" = 1'-0"

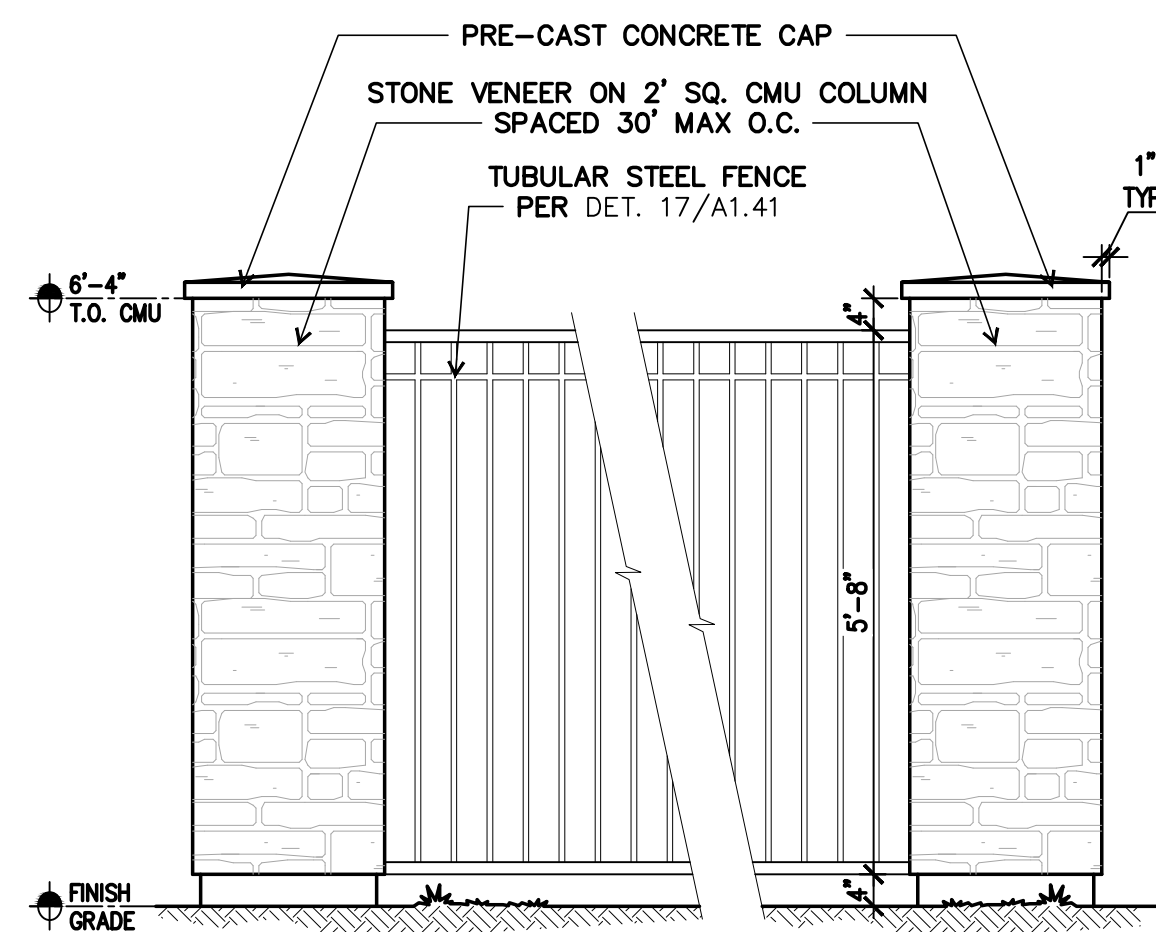


**COLOR NOTES:**  
 PRE-CAST CONCRETE CAP/BAND COLOR - DAVIS, PEWTER 860  
 PAINT STEEL FENCE/GATE/FRAME COLOR - DUNN EDWARDS 6378 JET  
 STONE VENEER - SLOSTICE "IRONWOOD" LEDGESTONE  
 STUCCO FINISH COLOR - DUNN EDWARDS DE6213 "FINE GRAIN"

**10 ENTRY MONUMENT ELEVATION**

SCALE: 3/4" = 1'-0"

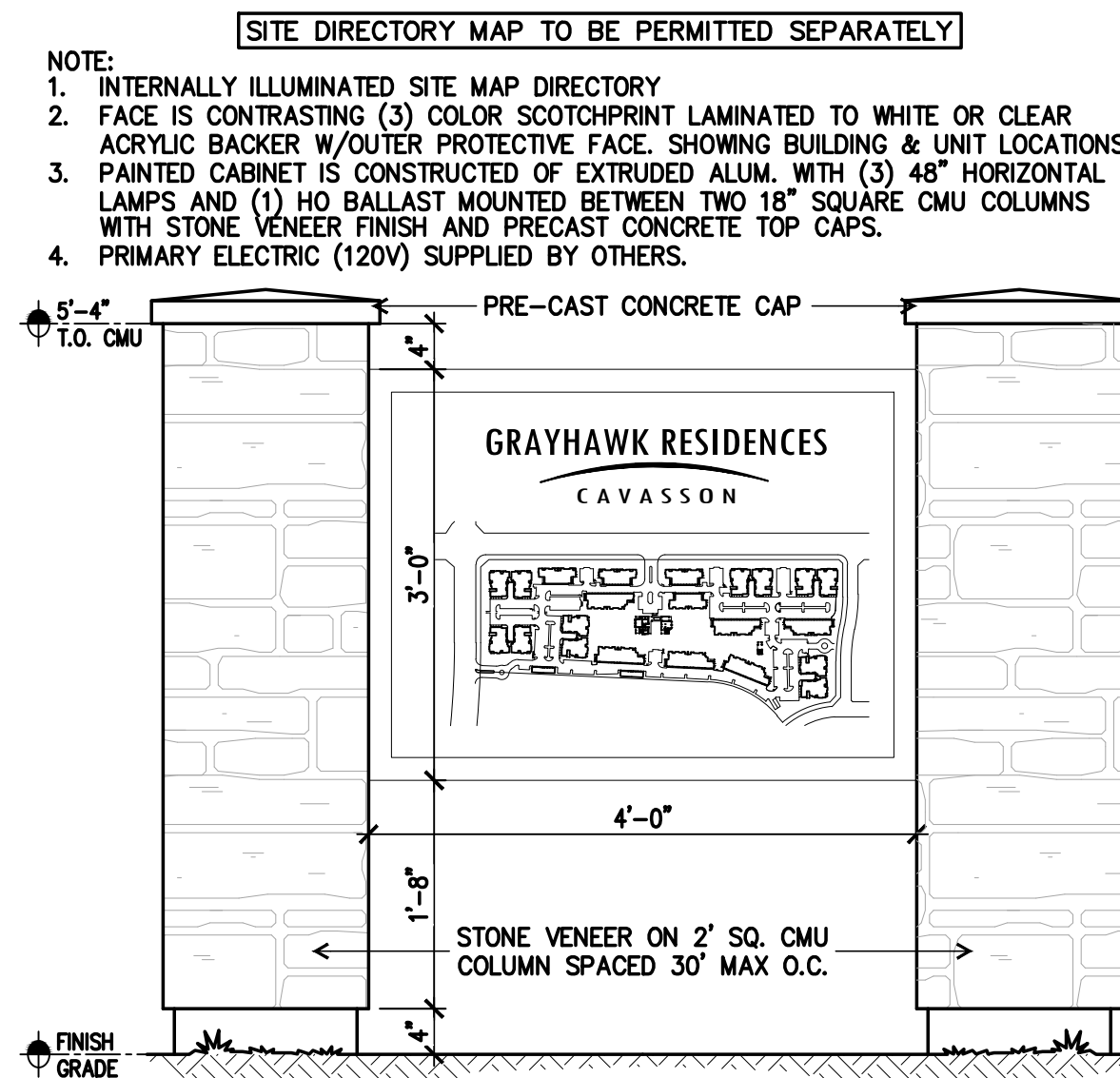
ENTRY MONUMENT SIGN TO BE PERMITTED SEPARATELY



**COLOR NOTES:**  
 PRE-CAST CONCRETE CAP/BAND COLOR - DAVIS, PEWTER 860  
 PAINT STEEL FENCE/GATE/FRAME COLOR - DUNN EDWARDS 6378 JET  
 STONE VENEER - SLOSTICE "IRONWOOD" LEDGESTONE

**14 PILASTER AT TUBULAR STEEL FENCE**

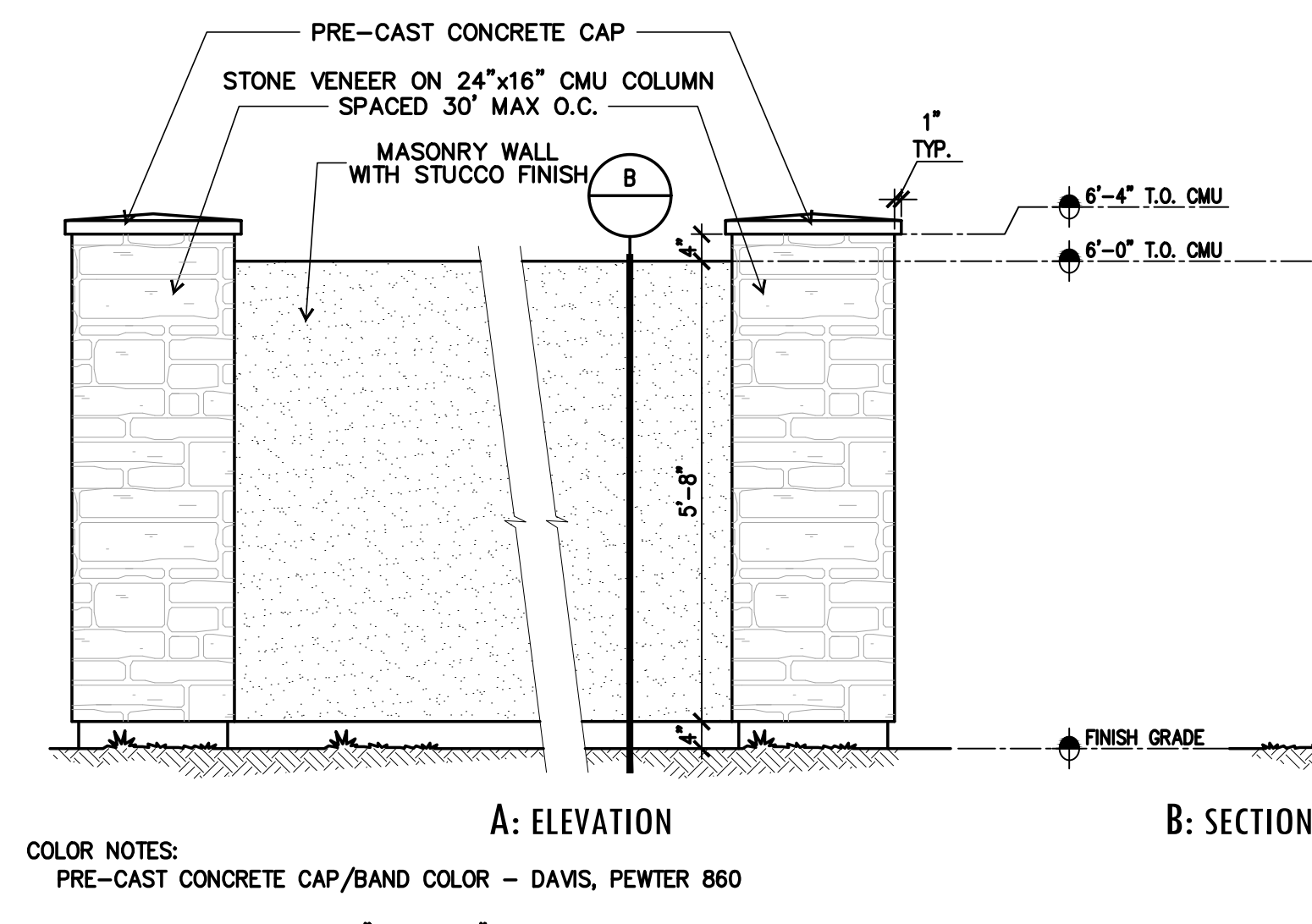
SCALE: 1/2" = 1'-0"



**COLOR NOTES:**  
 PRE-CAST CONCRETE CAP/BAND COLOR - DAVIS, PEWTER 860  
 PAINT STEEL FENCE/GATE/FRAME COLOR - DUNN EDWARDS 6378 JET  
 STONE VENEER - SLOSTICE "IRONWOOD" LEDGESTONE

**08 SITE DIRECTORY MAP**

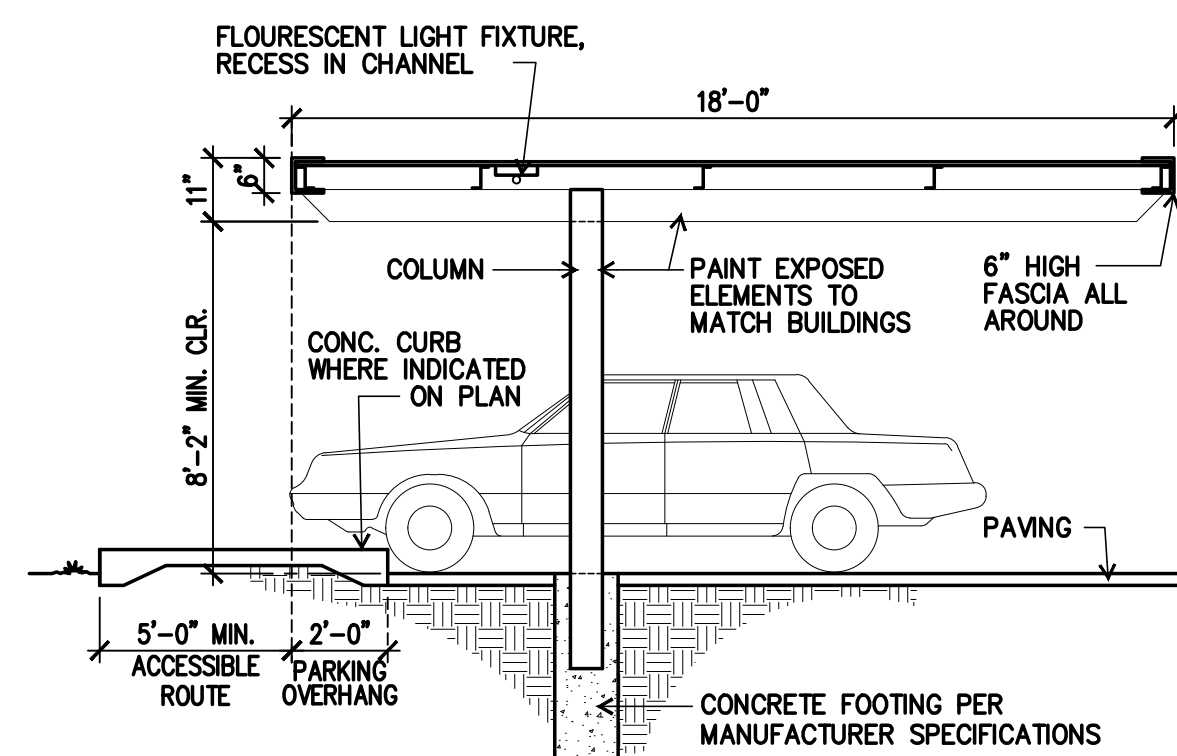
SCALE: 3/4" = 1'-0"



**COLOR NOTES:**  
 PRE-CAST CONCRETE CAP/BAND COLOR - DAVIS, PEWTER 860  
 STONE VENEER - SLOSTICE "IRONWOOD" LEDGESTONE  
 STUCCO FINISH COLOR - DUNN EDWARDS DE6213 "FINE GRAIN"

**15 PILASTER AT CMU PERIMETER WALL**

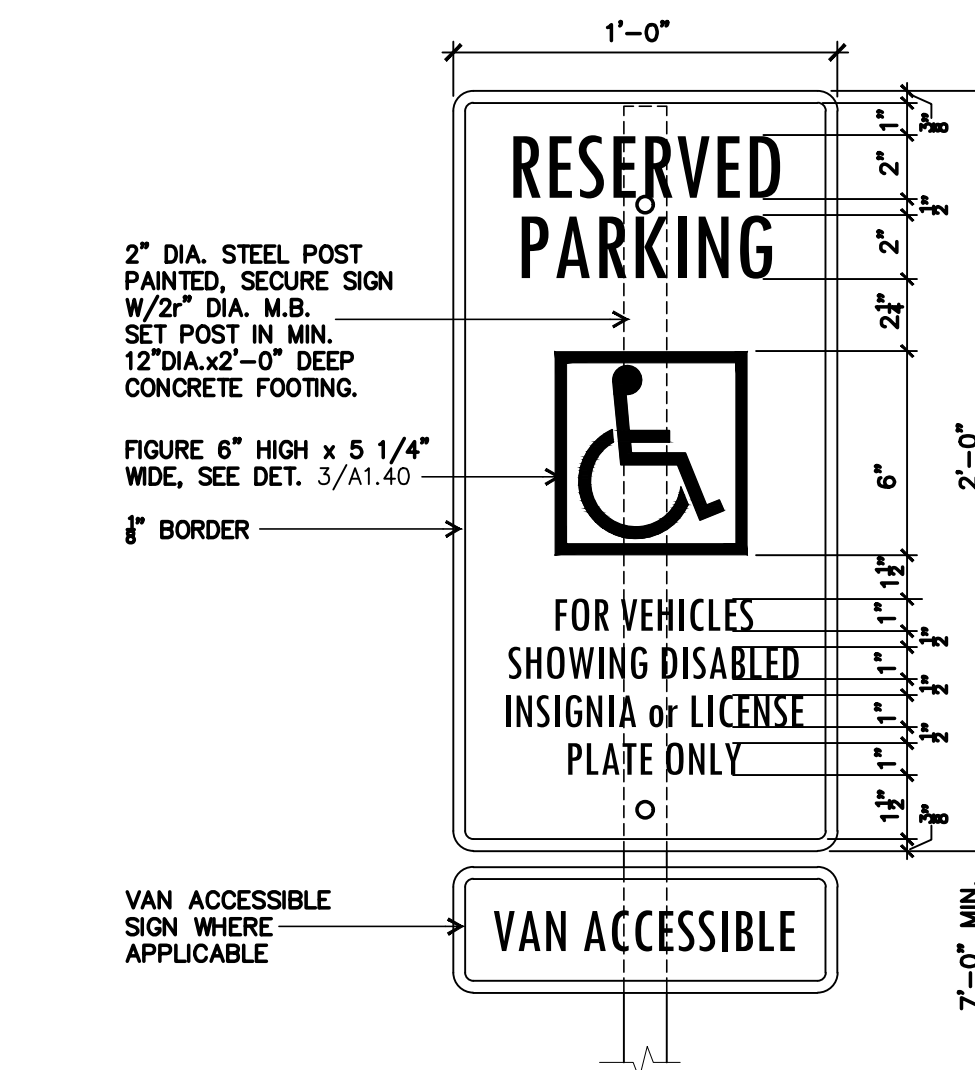
SCALE: 1/2" = 1'-0"



**NOTES:**  
 1. DESIGN TO BE COMPATIBLE WITH BUILDING, PAINT - DUNN EDWARDS 6378 JET  
 2. SHOP DRAWINGS AND CALCULATIONS REQUIRED TO BE DRAWN AND SEALED BY A REGISTERED STRUCTURAL ENGINEER.  
 3. CARPORT UNDER SEPARATE PERMIT & REVIEW - DETAIL FOR REFERENCE ONLY.

**09 CARPORT DETAIL**

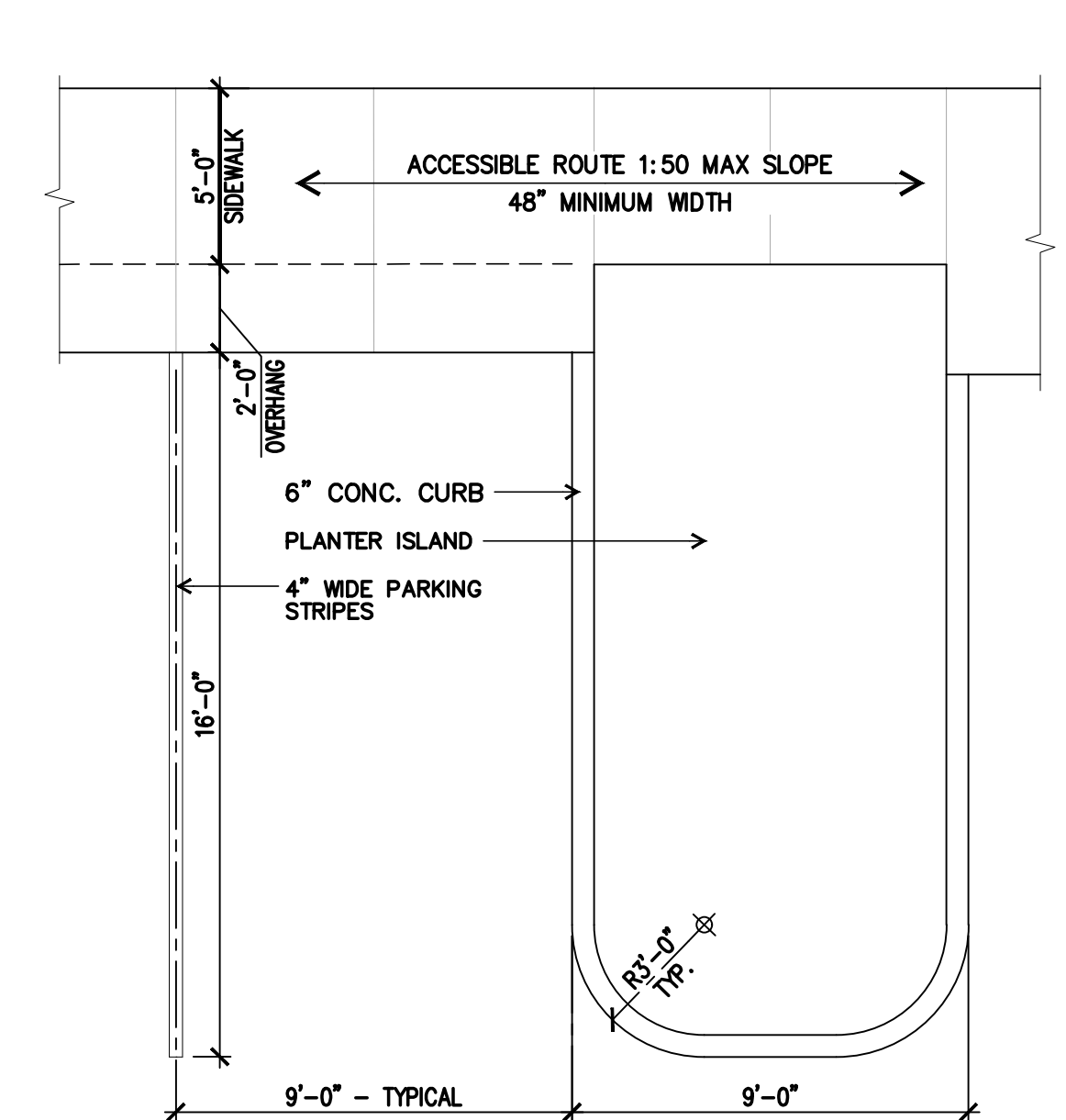
SCALE: 1/4" = 1'-0"



**NOTES:**  
 1. LETTERS AND NUMBERS ON SIGNS SHALL HAVE A WIDTH-TO-HIGHT RATIO BETWEEN 3:5 AND 1:1 AND A STROKE WIDTH-TO-HIGHT RATIO BETWEEN 1:5 AND 1:10.  
 2. CHARACTERS AND SYMBOLS SHALL CONTRAST WITH THEIR BACKGROUND - EITHER LIGHT CHARACTERS ON A DARK BACKGROUND OR DARK CHARACTERS ON A LIGHT BACKGROUND.  
 3. LETTERS AND NUMBERS ON SIGNS SHALL BE RAISED OR INCISED 1/32 IN. MIN. AND SHALL BE SANS SERIF CHARACTERS. RAISED CHARACTERS OR SYMBOLS SHALL BE AT LEAST 5/8 IN. HIGH, BUT NO HIGHER THAN 2 IN.

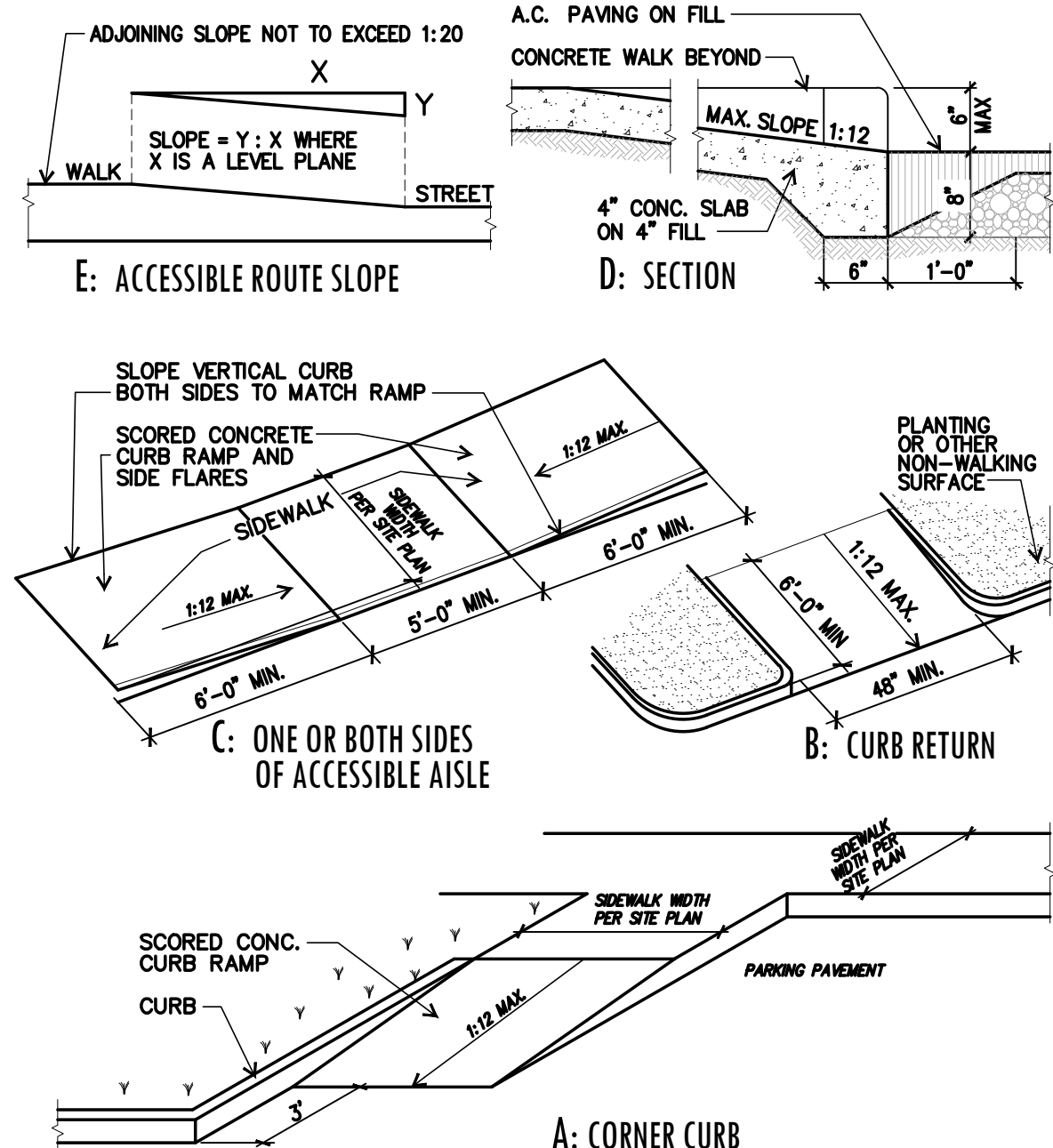
**04 ACCESSIBLE PARKING SIGN**

NOT TO SCALE



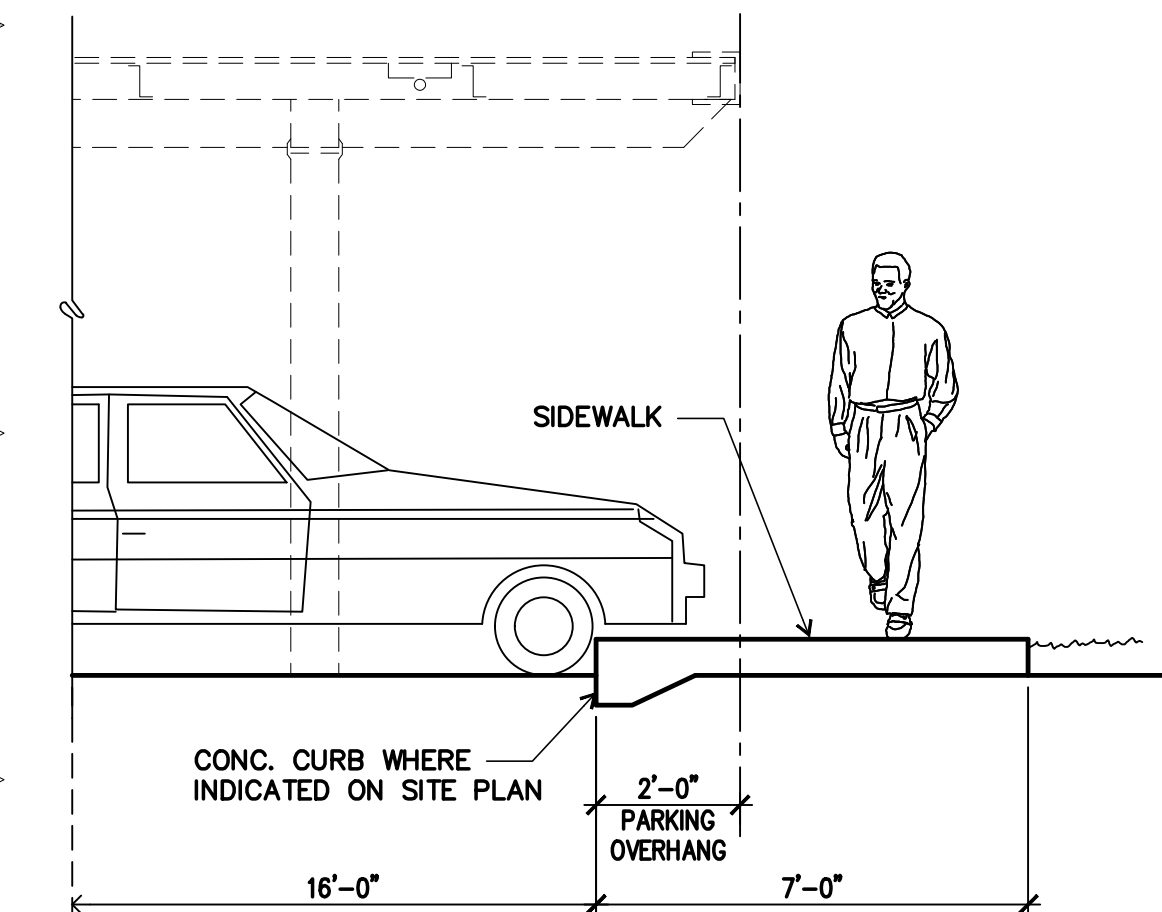
**01 TYPICAL PARKING STALL WITH ISLAND**

SCALE: 1/4" = 1'-0"



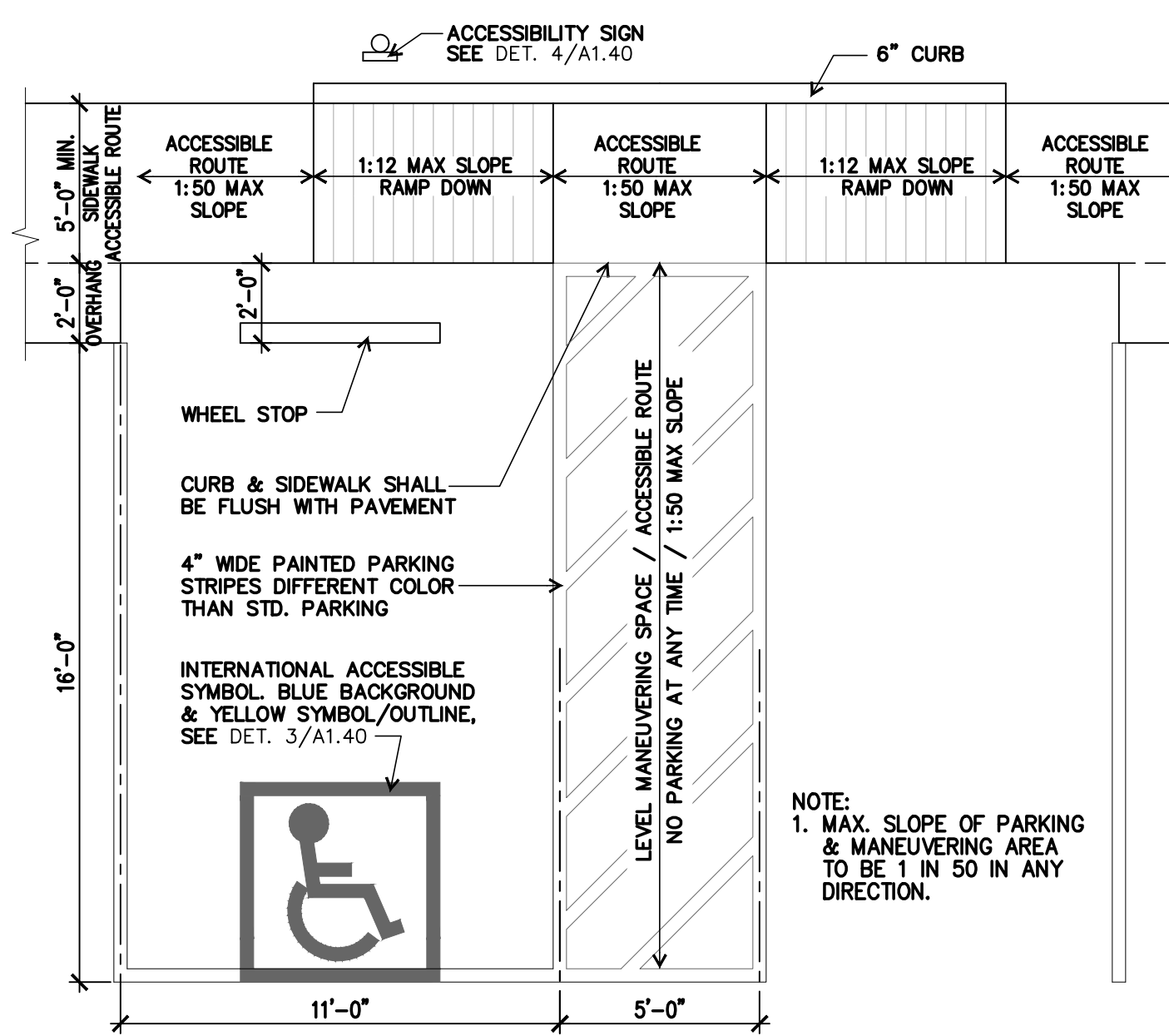
**05 TYPICAL ACCESSIBLE RAMP**

NOT TO SCALE



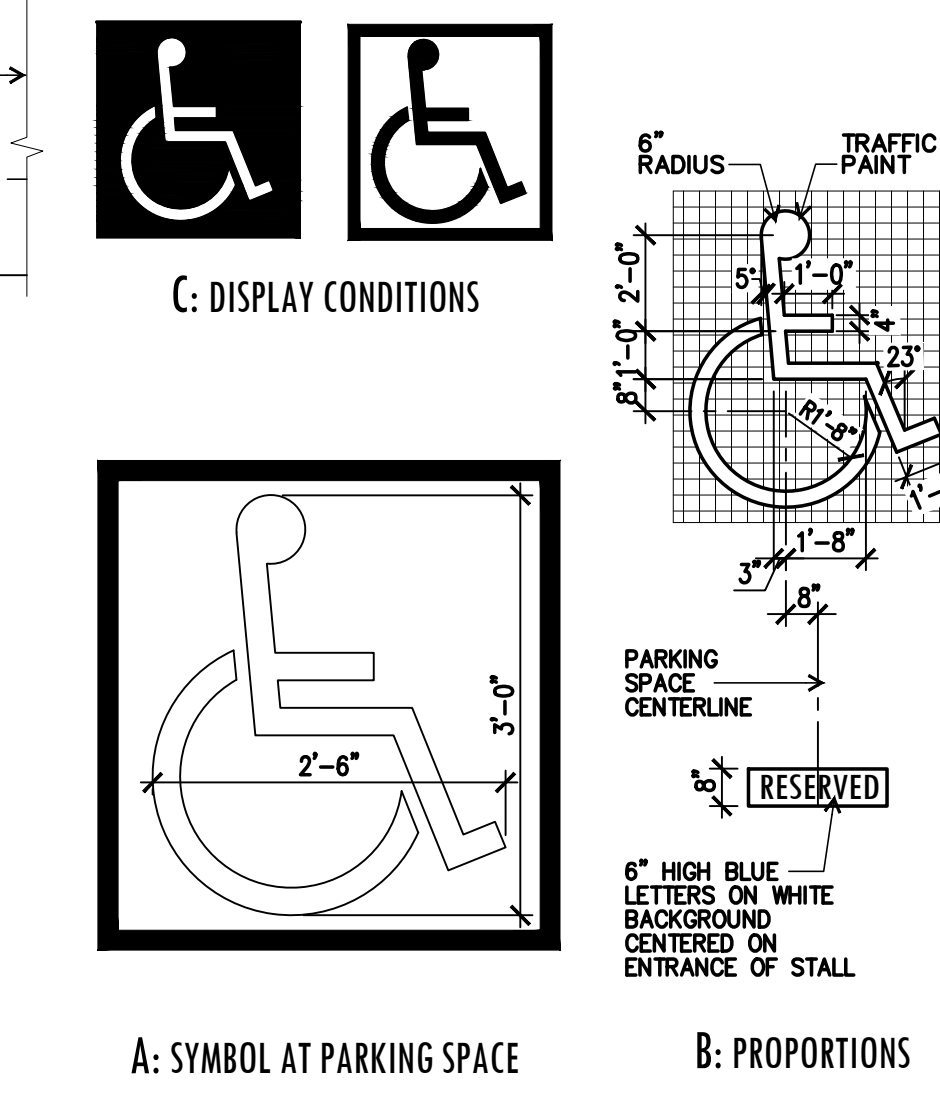
**02 SIDEWALK AT PARKING**

SCALE: 3/8" = 1'-0"



**06 TYPICAL ACCESSIBLE PARKING STALL**

SCALE: 1/4" = 1'-0"



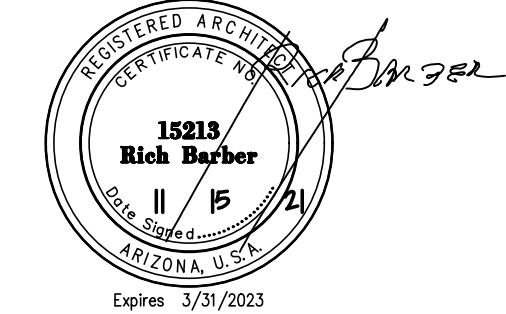
**03 INTERNATIONAL SYMBOL OF ACCESSIBILITY**

NOT TO SCALE

**GRAYHAWK RESIDENCES AT CAVASSON**

7701 E. LEGACY BOULEVARD  
 SCOTTSDALE, AZ 85255

Office of Rich Barber  
**ORB**  
 Architecture, LLC  
 WorldHQ@ORBArch.com



**Grayhawk Development**

**NOTES:**  
 1. REFER TO STRUCTURAL DETAILS & PLANS FOR STRUCTURAL RELATED INFORMATION. THESE DRAWINGS ARE ARCHITECTURAL ONLY.  
 2. SEE MANUFACTURER SPECIFICATIONS FOR ADDITIONAL INFORMATION ON SPECIFIC MATERIALS.

**REVISIONS**

NO.	DATE	DESCRIPTION

DRB 3RD SUBMITTAL

DATE: DECEMBER 02, 2021 ORB # 20-204

**A1.40**

SITE DETAILS  
 01-15