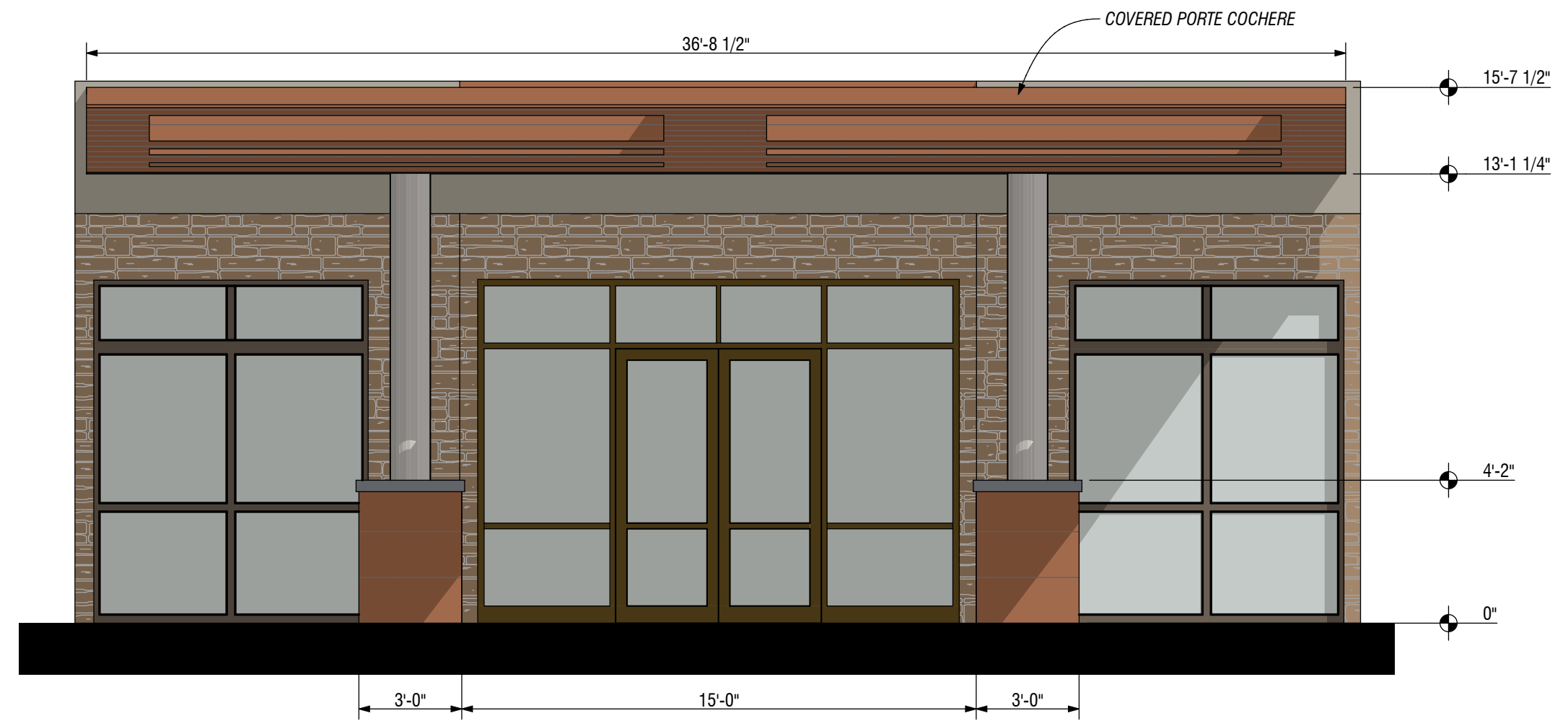
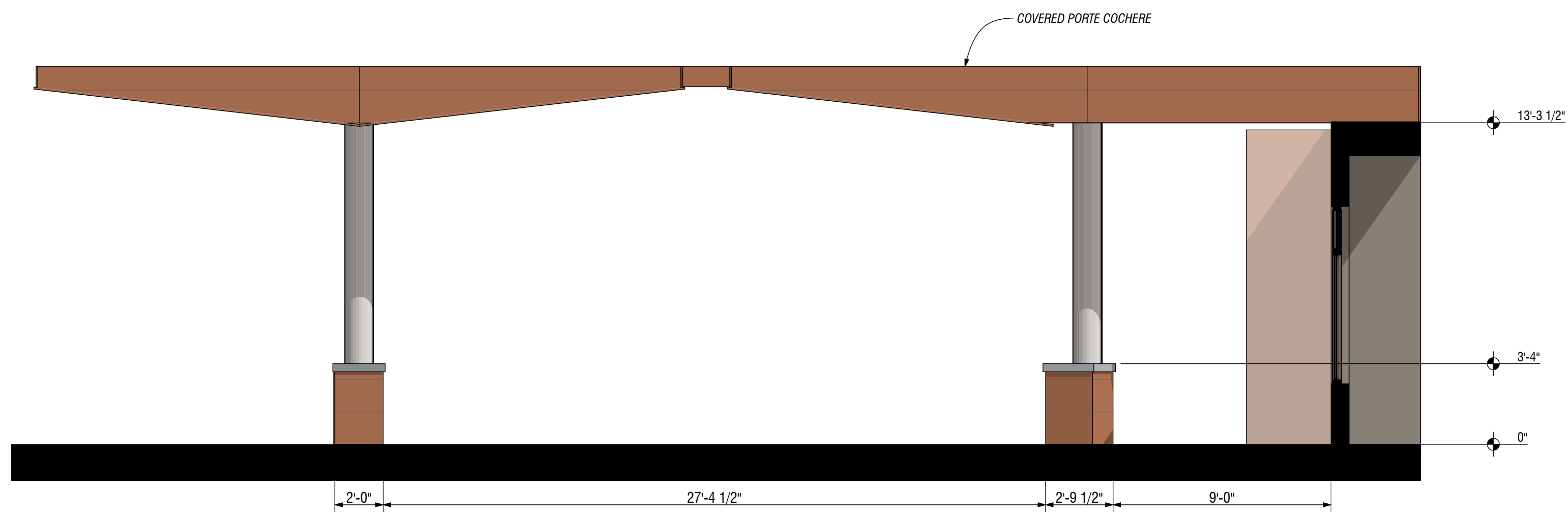


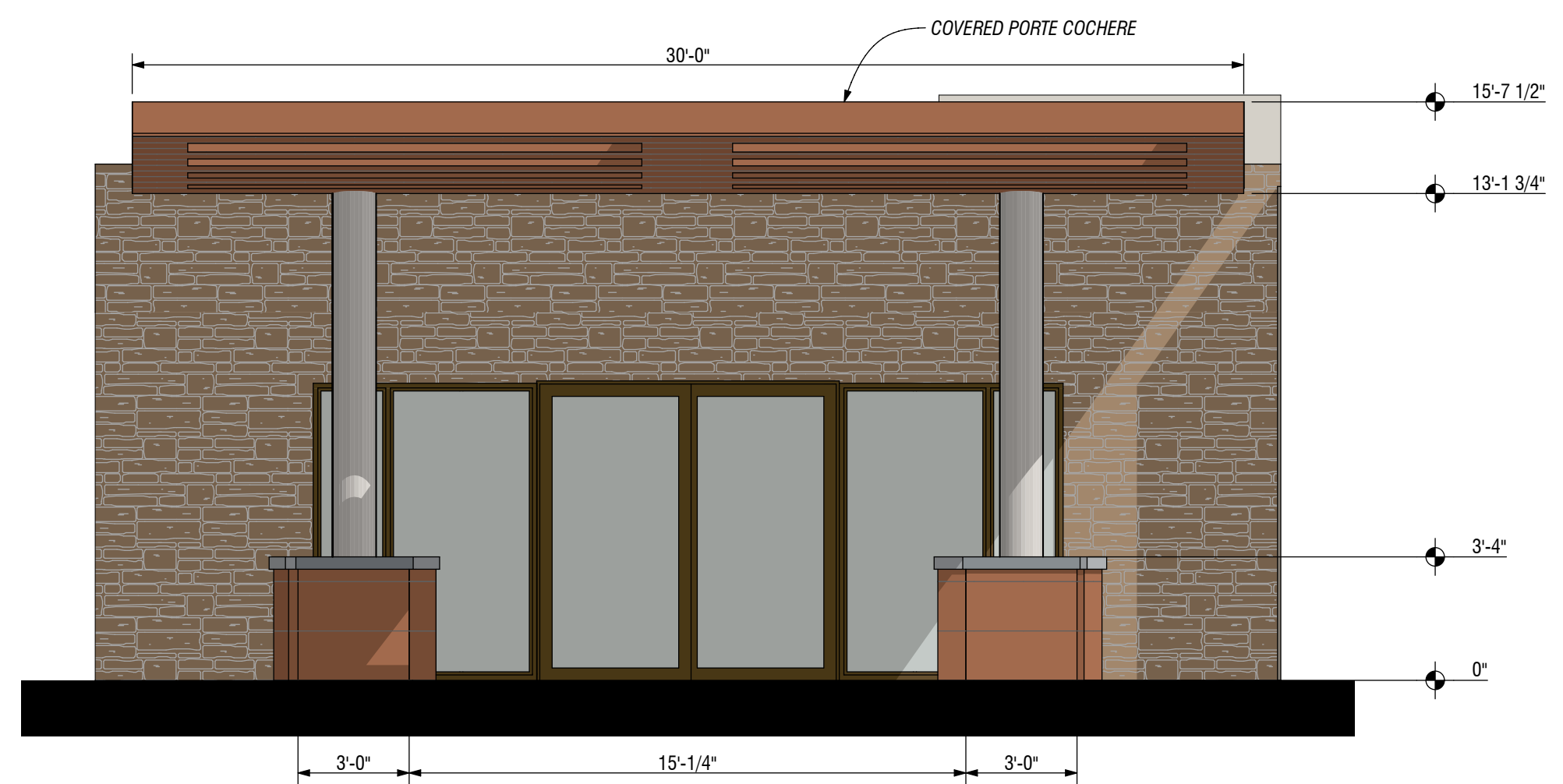
2 MAIN ENTRANCE: SIDE ELEVATION  
0 2' 4' 8'  
SCALE: 1/4" = 1'-0"



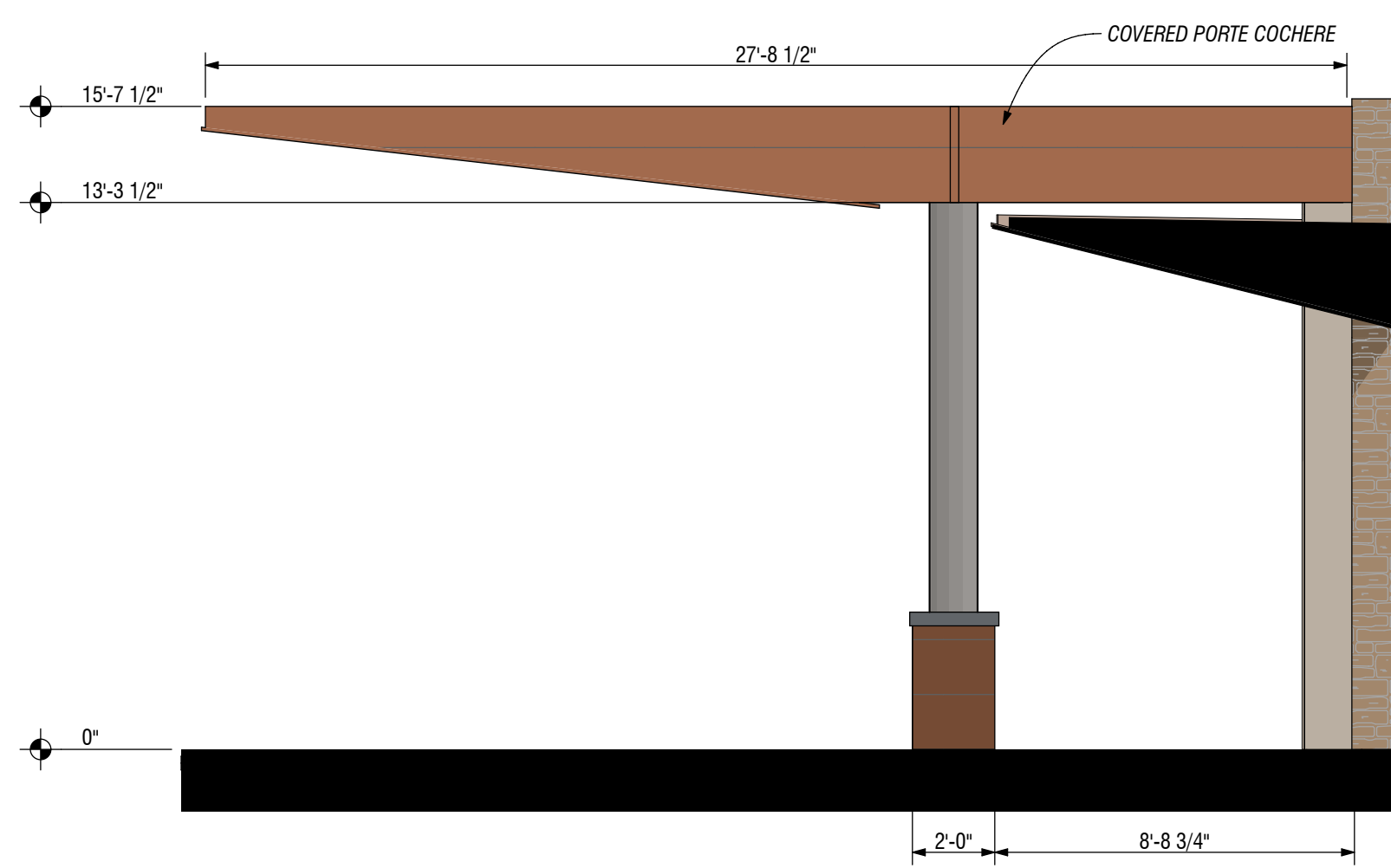
1 MAIN ENTRANCE: FRONT ELEVATION  
0 2' 4' 8'  
SCALE: 1/4" = 1'-0"



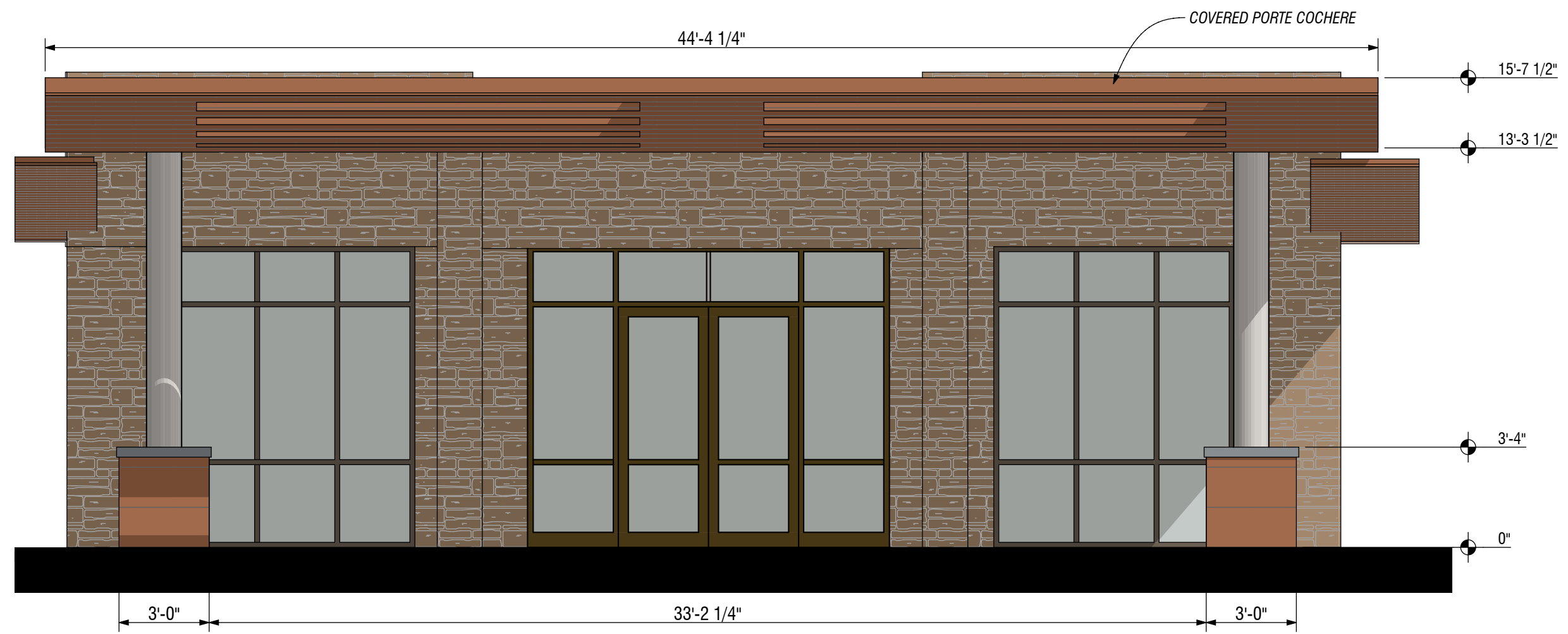
4 SPECIALIZED CARE ENTRANCE: SIDE ELEVATION  
0 2' 4' 8'  
SCALE: 1/4" = 1'-0"



3 SPECIALIZED CARE ENTRANCE: FRONT ELEVATION  
0 2' 4' 8'  
SCALE: 1/4" = 1'-0"



6 MINIMAL CARE ENTRANCE: SIDE ELEVATION  
0 2' 4' 8'  
SCALE: 1/4" = 1'-0"



5 MINIMAL CARE ENTRANCE: FRONT ELEVATION  
0 2' 4' 8'  
SCALE: 1/4" = 1'-0"

## Elevation Material Legend

- EIFS, fine sand finish, color 1  
PPG14-28  
Aldabra  
LRV 36
- EIFS, fine sand finish, color 2  
PPG1000-6  
Thunderstruck  
LRV 18
- EIFS, fine sand finish, color 3  
PPG16-23  
Tampico Brown  
LRV 11
- EIFS, fine sand finish, color 4  
PPG14-03  
Seagull  
LRV 73
- Metal Bronze, color 5  
PPG1022-7  
Star Anise  
LRV 8
- Pre-finished clear anodized  
Aluminum Panel
- Pre-finished Metal Panel  
Old Country Millwork  
K5: Rustic Metal Finishes  
Old Sierra Rust
- Stone Veneer  
Cedar Creek Stone  
Coyote Hills Saw Cut 3"
- 3" EIFS with Horizontal 1"  
deep groove pattern to match  
Villa stair screening
- Alumaboard or Similar battens  
with powder-coated wood  
grain look, color Hazelnut  
brown
- Powdercoated steel railing  
system, Typ. Color PPG  
1022-7 Star Anise. LRV 8
- Roof Top Equipment screen,  
Direct applied EIFS, Typ.  
Color PPG 1000-6  
Thunderstruck. LRV 18

# Vi at Cavasson

NE corner Miller Rd. and Cavasson Blvd. Scottsdale AZ 85255

PRELIMINARY - NOT FOR  
CONSTRUCTION

orcutt|winslow  
ARCHITECTURE PLANNING INTERIOR DESIGN

Entry Elevations &  
Details  
A-13