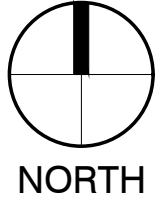
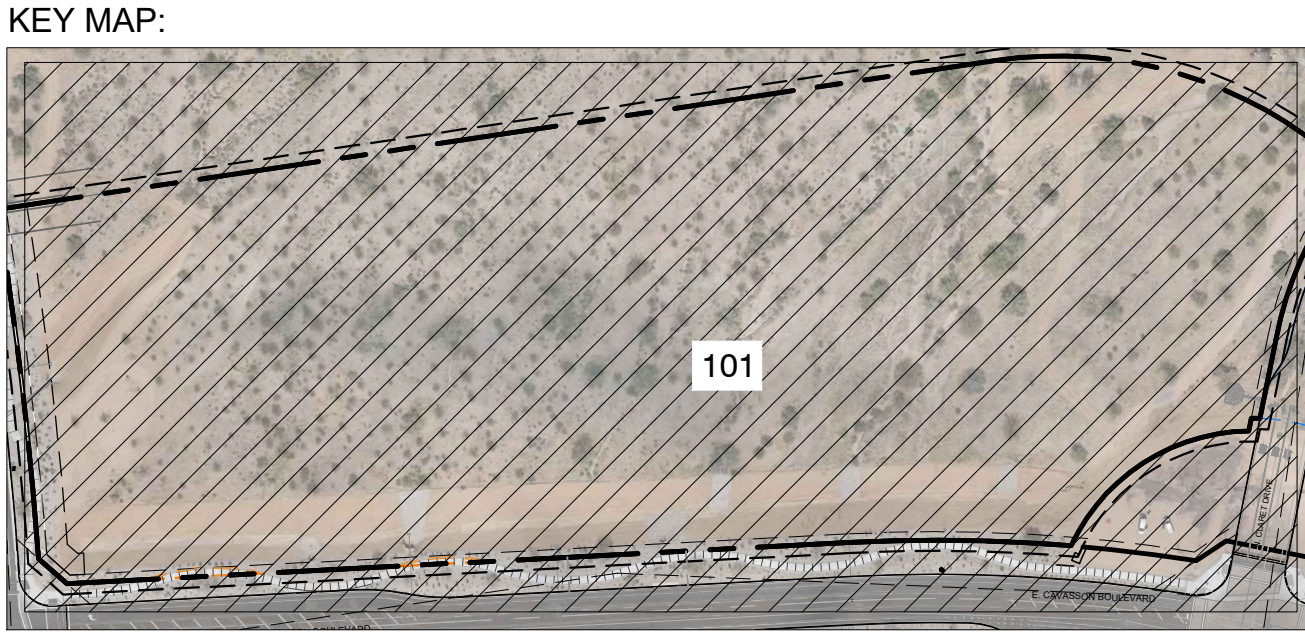


SYMBOL	DESCRIPTION
	TREE SALVAGE
	TREE DEMO AND REMOVE OFF SITE
	TREE TO REMAIN AND PROTECT IN PLACE
	DOES NOT EXIST ON SITE
	CACTI SALVAGE
	CACTI TO REMAIN AND PROTECT IN PLACE

SYMBOL	DESCRIPTION
	STREET SIGN BY CIVIL
	EXISTING STREET LIGHT TO REMAIN
	PARCEL LINE
	LIMIT OF WORK
	PUBLIC UTILITY EASEMENT (PUE)
	RIGHT OF WAY (ROW)
	CENTER LINE (ROADWAY)



0 20' 40' 80'
SCALE: 1" = 40'-0"



Vi Living
Vi at Cavasson

NEC MILLER RD. AND CAVASSON BLVD. SCOTTSDALE, ARIZONA 85255

orcutt|winslow

ARCHITECTURE PLANNING INTERIOR DESIGN

Dig
Studio

INVENTORY
PLAN
IP101

Native Plant Inventory

8/26/2021

Plant #	Botanical Name	Common Name	Caliper (in)/ Height (ft)	Inventory Designation	Intended Designation	Cacti Arms	Comments
T-1	Parkinsonia florida	Blue Palo Verde	9	S	S		
T-2	Prosopis spp.	Mesquite	14	S	S		
T-3	Prosopis spp.	Mesquite	9	S	S		Leaning
T-4	Parkinsonia florida	Blue Palo Verde	9	S	S		
T-5	Oleaya tesota	Ironwood	18	S	S		Missing Limbs/Angle Specific/Fan Form
T-6	Parkinsonia florida	Blue Palo Verde	10	NS	R		Damaged / Destroyed
T-7	Parkinsonia florida	Blue Palo Verde	6	S	P		
T-8	Parkinsonia florida	Blue Palo Verde	10	S	S		
T-9	Parkinsonia florida	Blue Palo Verde	8	S	S		
T-10	Parkinsonia florida	Blue Palo Verde	9	S	S		Great Form
T-11	Parkinsonia florida	Blue Palo Verde	7	S	S		
T-12	Parkinsonia florida	Blue Palo Verde	5	S	S		
T-13	Parkinsonia florida	Blue Palo Verde	20	S	S		
T-14	Parkinsonia florida	Blue Palo Verde	20	S	S		Prune broken limbs
T-15	Parkinsonia florida	Blue Palo Verde	12	S	S		
T-16	Parkinsonia florida	Blue Palo Verde	7	S	S		Good Form
T-17	Parkinsonia florida	Blue Palo Verde	8	S	S		Good Form
T-18	Prosopis spp.	Mesquite	20	S	S		Great Form
T-19	Prosopis spp.	Mesquite	17	S	S		Beauty / Great Form
T-20	Parkinsonia florida	Blue Palo Verde	24	S	S		
T-21	Parkinsonia florida	Blue Palo Verde	20	S	S		
T-22	Parkinsonia florida	Blue Palo Verde	20	S	S		
T-23	Parkinsonia florida	Blue Palo Verde	5	S	S		
T-24	Parkinsonia florida	Blue Palo Verde	16	S	S		
T-25	Parkinsonia florida	Blue Palo Verde	10	S	S		Good Form
T-26	Parkinsonia florida	Blue Palo Verde	9	S	S		Good Form
T-27	Parkinsonia florida	Blue Palo Verde	22	S	S		Specimen Tree
T-28	Parkinsonia florida	Blue Palo Verde	14	S	S		
T-29	Parkinsonia florida	Blue Palo Verde	12	S	S		
T-30	Parkinsonia florida	Blue Palo Verde	11	S	S		
T-31	Parkinsonia florida	Blue Palo Verde	16	S	S		
T-32	Parkinsonia florida	Blue Palo Verde	14	S	S		
T-33	Parkinsonia florida	Blue Palo Verde	13	S	S		
T-34	Parkinsonia florida	Blue Palo Verde	10	S	S		
T-35	Parkinsonia florida	Blue Palo Verde	12	S	S		
T-36	Parkinsonia florida	Blue Palo Verde	5	S	S		
T-37	Parkinsonia florida	Blue Palo Verde	14	S	S		
T-38	Parkinsonia florida	Blue Palo Verde	16	S	S		
T-39	Parkinsonia florida	Blue Palo Verde	10	S	S		
T-40	Parkinsonia florida	Blue Palo Verde	7	S	S		
T-41	Parkinsonia florida	Blue Palo Verde	9	NS	R		Damaged / Destroyed
T-42	Parkinsonia florida	Blue Palo Verde	6	S	S		

Plant #	Botanical Name	Common Name	Caliper (in)/ Height (ft)	Inventory Designation	Intended Designation	Cacti Arms	Comments
T-43	Prosopis spp.	Mesquite	22	S	S		Great Form / Prune
T-44	Parkinsonia florida	Blue Palo Verde	13	S	S		Great Form
T-45	Parkinsonia florida	Blue Palo Verde	10	S	S		Great Form
T-46	Parkinsonia florida	Blue Palo Verde	12	S	S		
T-47	Parkinsonia florida	Blue Palo Verde	7	S	S		
T-48	Parkinsonia florida	Blue Palo Verde	5	S	S		
T-49	Prosopis spp.	Mesquite	20	NS	R		Trunk Damaged / Destroy
T-50	Parkinsonia florida	Blue Palo Verde	6	S	S		
T-51	Parkinsonia microphylla	Foothills Palo Verde	5	S	S		
C-1	Carnegiea gigantea	Saguaro	6'	S	S		
C-2	Carnegiea gigantea	Saguaro	3'	S	S		
C-3	Carnegiea gigantea	Saguaro	3'	S	S		
T-52	Parkinsonia florida	Blue Palo Verde	6	S	S		
T-53	Parkinsonia florida	Blue Palo Verde	9	S	S		
T-54	Parkinsonia florida	Blue Palo Verde	10	S	S		
T-55	Parkinsonia florida	Blue Palo Verde	5	S	S		
T-56	Parkinsonia florida	Blue Palo Verde	15	S	S		
C-4	Ferocactus cylindraceus	Compass Barrell	3'	S	S		
C-5	Ferocactus cylindraceus	Compass Barrell	2'	S	S		
C-6	Ferocactus cylindraceus	Compass Barrell	2'	S	S		
C-7	Ferocactus cylindraceus	Compass Barrell	2'	S	S		
C-8	Ferocactus cylindraceus	Compass Barrell	2'	S	S		
C-9	Carnegiea gigantea	Saguaro	3'	S	S		
T-57	Parkinsonia florida	Blue Palo Verde	12	S	S		
T-58	Parkinsonia florida	Blue Palo Verde	5	S	S		
T-59	Parkinsonia florida	Blue Palo Verde	20	PIP	RIP		
C-10	Carnegiea gigantea	Saguaro	4'	S	S		
C-11	Carnegiea gigantea	Saguaro	6'	PIP	RIP		
C-12	Fouquieria splendens	Ocotillo	7'	S	S		
C-13	Pachycereus schottii	Senita Cactus	4'	S	S	7	
T-60	Parkinsonia florida	Blue Palo Verde	5	PIP	RIP		
T-61	Parkinsonia florida	Blue Palo Verde	14	PIP	RIP		
C-14	Carnegiea gigantea	Saguaro	6'	S	S		
C-15	Carnegiea gigantea	Saguaro	6'	S	S		
C-16	Carnegiea gigantea	Saguaro	8'	S	S		
C-17	Stenocereus thurberi	Organ Pipe Cactus	6'	S	S	9	
T-62	Parkinsonia florida	Blue Palo Verde	6	S	S		
C-18	Fouquieria splendens	Ocotillo	6'	S	S		
T-63	Prosopis spp.	Mesquite	20	S	S		Prune broken limbs
C-19	Carnegiea gigantea	Saguaro	4'	S	S		
C-20	Carnegiea gigantea	Saguaro	5'	S	S		
C-21	Pachycereus schottii	Senita Cactus	5'	S	S	5	
C-22	Stenocereus thurberi	Organ Pipe Cactus	5'	S	S	8	
T-64	Parkinsonia florida	Blue Palo Verde	9	S	S		
C-23	Fouquieria splendens	Ocotillo	8'	S	S		

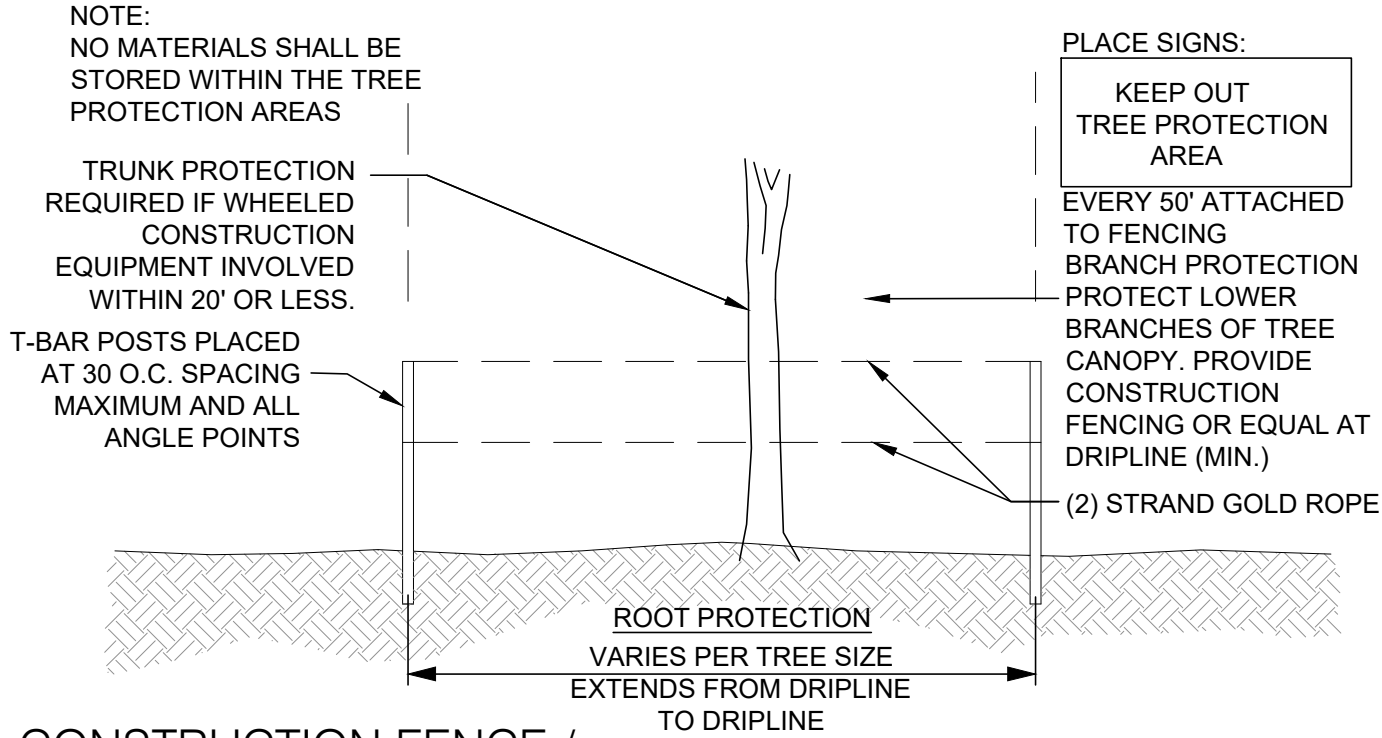
Plant #	Botanical Name	Common Name	Caliper (in)/ Height (ft)	Inventory Designation	Intended Designation	Cacti Arms	Comments
C-24	Fouquieria splendens	Ocotillo	6'	S	S		
T-65	Parkinsonia florida	Blue Palo Verde	12	S	S		
T-66	Parkinsonia florida	Blue Palo Verde	6	S	S		
T-67	Parkinsonia florida	Blue Palo Verde	10	PIP	RIP		
T-68	Prosopis spp.	Mesquite	15	PIP	RIP		
C-25	Fouquieria splendens	Ocotillo	8'	PIP	RIP		
C-26	Carnegiea gigantea	Saguaro	5'	PIP	RIP		Damaged
C-27	Carnegiea gigantea	Saguaro	4'	PIP	RIP		
T-69	Chilopsis linearis	Desert Willow	4	PIP	RIP		
T-70	Chilopsis linearis	Desert Willow	4	PIP	RIP		
T-71	Parkinsonia	Blue Palo Verde	4	S	S		
T-72	Chilopsis linearis	Desert Willow	4	S	S		
C-28	Fouquieria splendens	Ocotillo	10'	S	S		
T-73	Chilopsis linearis	Desert Willow	4	S	S		
T-74	Parkinsonia florida	Blue Palo Verde	15	S	S		
C-29	Carnegiea gigantea	Saguaro	7'	S	S		
T-75	Prosopis spp.	Mesquite	12	S	S		
C-30	Fouquieria splendens	Ocotillo	10'	S	S		

Summary	Trees	Cacti
Salvageable	72	24
Non-Salvageable	3	0
Remain-In-Place	0	6
Total	75	30

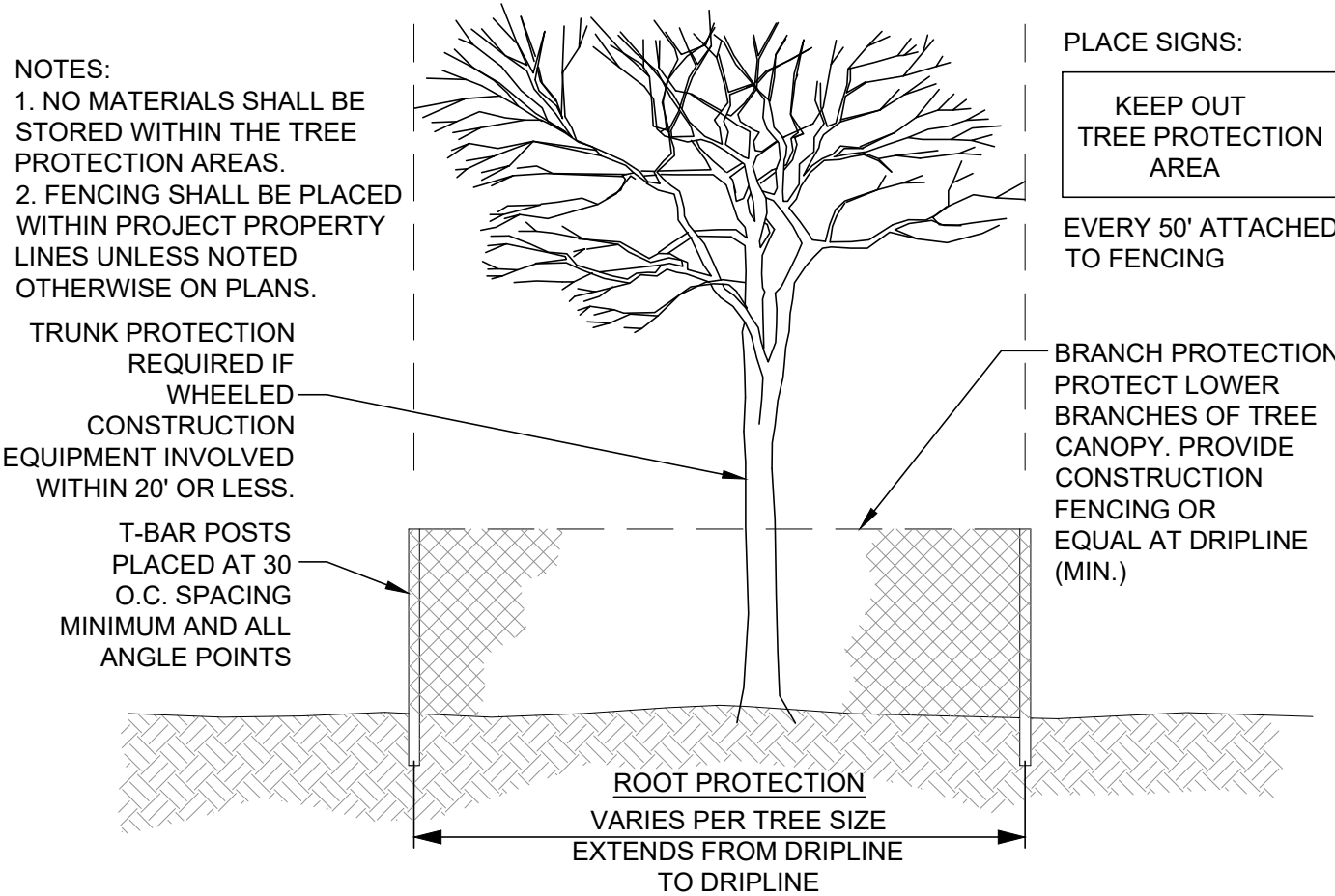
Legend
S = Salvageable
NS = Non-Salvageable

RIP = Remain-In-Place
PIP = Protect-In-Place

DETAILS



CONSTRUCTION FENCE / TREE PROTECTION LIMITS



CONSTRUCTION AREA LIMITS / TREE PROTECTION

Vi Living
Vi at Cavasson

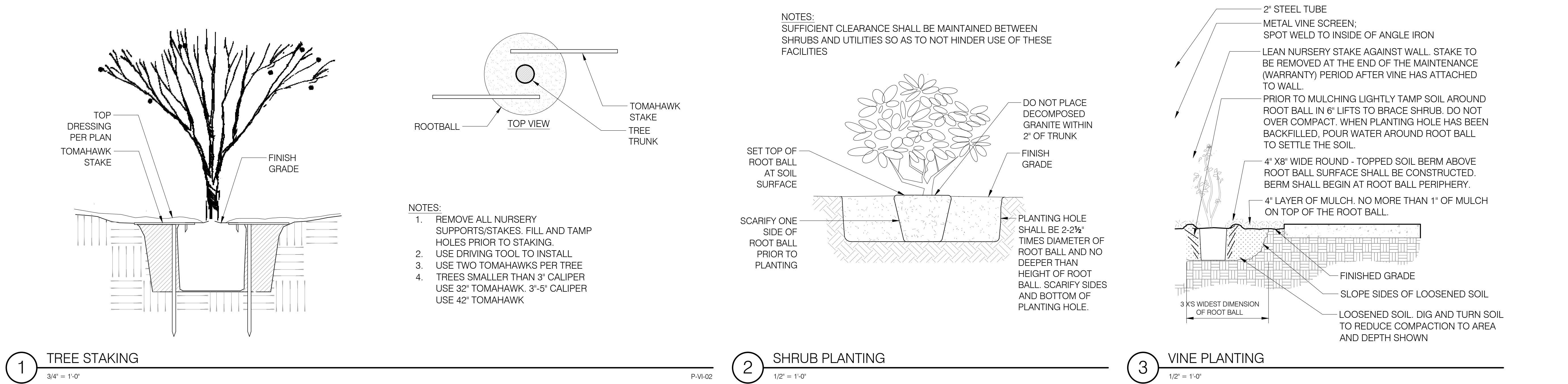
NEC MILLER RD. AND CAVASSON BLVD. SCOTTSDALE, ARIZONA 85255

orcutt | winslow

ARCHITECTURE PLANNING INTERIOR DESIGN

Dig
Studio

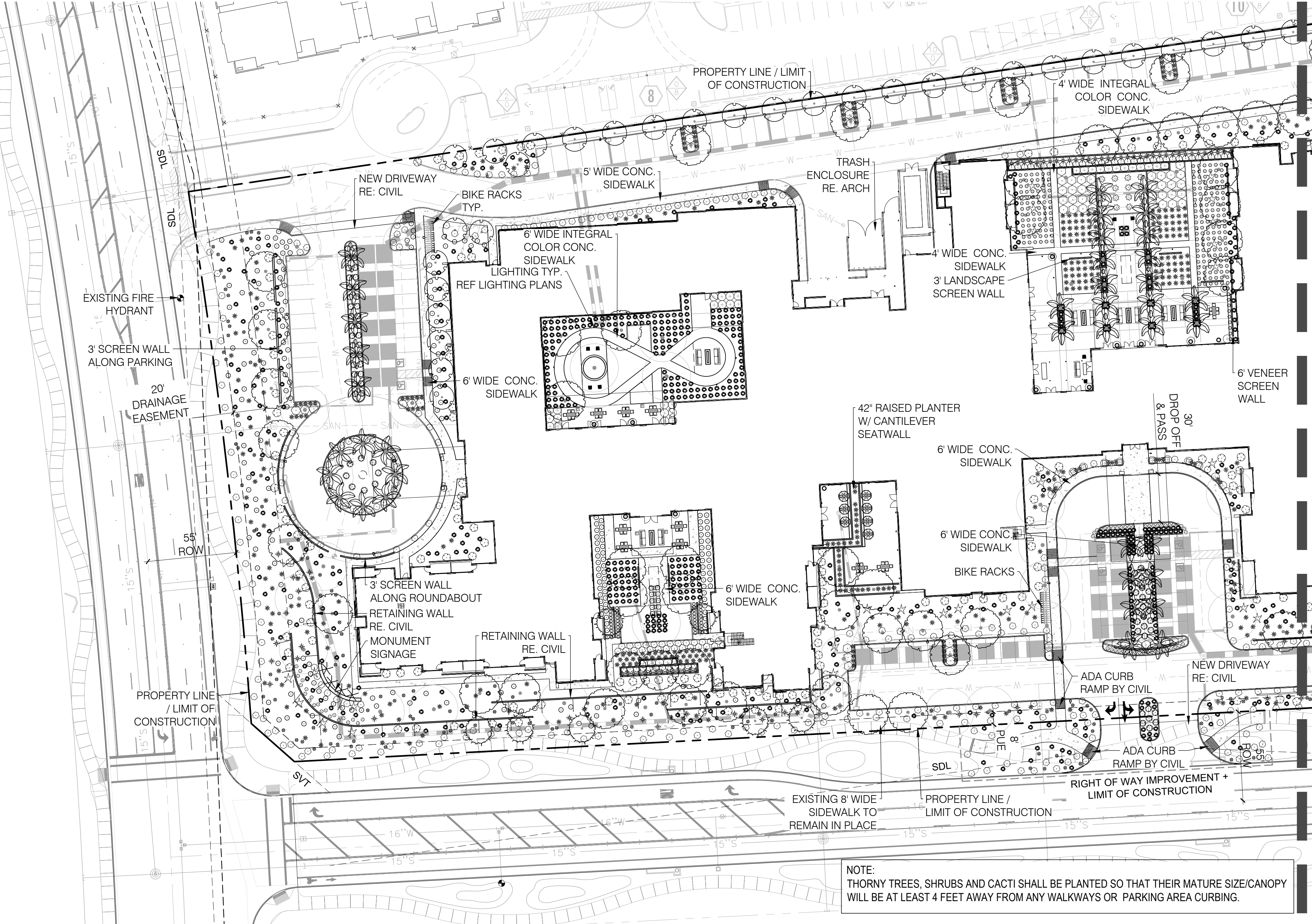
INVENTORY
LIST AND
DETAILS
IP102



CITY OF SCOTTSDALE PLANTING NOTES

- AREAS OF DECOMPOSED GRANITE (IF YOUR IN A ELSO AREA, DELETE THE "DECOMPOSED GRANITE" AND PUT "SALVAGED DESERT SURFACE SOIL") WITHOUT PLANT MATERIALS/GROUNDCOVERS SHALL NOT EXCEED DIMENSIONS OF MORE THAN 7 FEET IN ANY ONE DIRECTION, MEASURED BETWEEN PLANT CANOPIES AND/OR COVERAGE.
- A MINIMUM OF 50 PERCENTAGE (UNLESS OTHERWISE STIPULATED BY THE DEVELOPMENT REVIEW BOARD, AND/OR THE ZONING ORDINANCE REQUIREMENTS) OF THE PROVIDED TREES SHALL BE MATURE TREES, PURSUANT TO THE CITY OF SCOTTSDALE'S ZONING ORDINANCE ARTICLE X, SECTION 10.301, AS DEFINED IN THE CITY OF SCOTTSDALE'S ZONING ORDINANCE ARTICLE III, SECTION 3.100.
- A SINGLE TRUNK TREE'S CALIPER SIZE, THAT IS TO BE EQUAL TO OR LESS THAN 4-INCHES, SHALL BE DETERMINED BY UTILIZING THE SMALLEST DIAMETER OF THE TRUNK 6-INCHES ABOVE FINISHED GRADE ADJACENT TO THE TRUNK. A TREE'S CALIPER SIZE, FOR SINGLE TRUNK TREES THAT ARE TO HAVE A DIAMETER GREATER THAN 4-INCHES, SHALL BE DETERMINED BY UTILIZING THE SMALLEST DIAMETER OF THE TRUNK 12-INCHES ABOVE FINISHED GRADE ADJACENT TO THE TRUNK. A MULTIPLE TRUNK TREE'S CALIPER SIZE IS MEASURED AT 6" ABOVE THE LOCATION THAT THE TRUNK SPLITS ORIGINATES, OR 6" ABOVE FINISHED GRADE IF ALL TRUNKS ORIGINATE FROM THE SOIL.
- AREA WITHIN THE SIGHT DISTANCE TRIANGLES IS TO BE CLEAR OF LANDSCAPING, SIGNS, OR OTHER VISIBILITY OBSTRUCTIONS WITH A HEIGHT GREATER THAN 1.5 FEET. TREES WITHIN THE SIGHT TRIANGLE SHALL HAVE A SINGLE TRUNK AND A CANOPY THAT BEGINS AT 8 FEET IN HEIGHT UPON INSTALLATION. ALL HEIGHTS ARE MEASURED FROM NEAREST STREET LINE ELEVATION.
- NO TURF AREAS ARE TO BE PROVIDED.
- RETENTION/DETENTION BASINS SHALL BE CONSTRUCTED SOLELY FROM THE APPROVED CIVIL PLANS. ANY ALTERATION OF THE APPROVED DESIGN (ADDITIONAL FILL, BOULDERS, ETC.) SHALL REQUIRE ADDITIONAL FINAL PLANS STAFF REVIEW AND APPROVAL.
- ALL RIGHTS-OF-WAY ADJACENT TO THIS PROPERTY SHALL BE LANDSCAPED AND MAINTAINED BY THE PROPERTY OWNER.
- PRIOR TO THE ESTABLISHMENT OF WATER SERVICE, NON-RESIDENTIAL PROJECTS WITH AN ESTIMATED ANNUAL WATER DEMAND OF TEN (10) ACRE-FEET OR MORE SHALL SUBMIT A
- CONSERVATION PLAN IN CONFORMANCE WITH SECTIONS 49-245 THROUGH 49-248 OF THE CITY CODE TO THE WATER CONSERVATION OFFICE.
- TURF SHALL BE LIMITED TO THE MAXIMUM AREA SPECIFIED IN SECTIONS 49-245 THROUGH 49-248 OF THE CITY CODE AND SHALL BE SHOWN ON LANDSCAPE PLANS SUBMITTED AT THE TIME OF FINAL PLANS.
- NO LIGHTING IS APPROVED WITH THE SUBMITTAL.
- THE APPROVAL OF THESE PLANS RECOGNIZE THE CONSTRUCTION OF A LOW VOLTAGE SYSTEM AND DOES NOT AUTHORIZE ANY VIOLATION OF THE CURRENT CITY OF SCOTTSDALE ADOPTED ELECTRICAL CODE.
- THE LANDSCAPE SPECIFICATION SECTION(S) OF THESE PLANS HAVE NOT REVIEWED AND SHALL NOT BE PART OF THE CITY OF SCOTTSDALE'S APPROVAL.
- ALL SIGNS REQUIRE SEPARATE PERMITS AND APPROVALS.
- NEW LANDSCAPING, INCLUDING SALVAGED PLANT MATERIAL, AND LANDSCAPING INDICATED TO REMAIN, WHICH IS DESTROYED, DAMAGED, OR EXPIRES DURING CONSTRUCTION SHALL BE REPLACED WITH LIKE SIZE, KIND, AND QUANTITY PRIOR TO THE ISSUANCE OF THE CERTIFICATE OF OCCUPANCY / LETTER OF ACCEPTANCE TO THE SATISFACTION OF THE INSPECTION SERVICES STAFF.
- ALL REVEGETATED NAOS SHALL BE WATERED FOR 3 YEARS. AT THE END OF 3 YEARS, THE IRRIGATION SYSTEMS TO THE REVEGETATED NAOS SHALL BE PERMANENTLY DISCONNECTED.
- NO IRRIGATION SHALL BE PROVIDED TO UNDISTURBED NATURAL AREA OPEN SPACE (NAOS) AREAS.
- PROVIDE THE NATURAL AREA OPEN SPACE (NAOS) AND LIMITS OF CONSTRUCTION (LOC) PROTECTION PROGRAM ON THE PLANS:

- NATURAL AREA OPEN SPACE (NAOS) AND LIMITS OF CONSTRUCTION (LOC) PROTECTION PROGRAM:
- NO BUILDING, GRADING, OR CONSTRUCTION ACTIVITY SHALL ENCROACH INTO AREAS DESIGNATED AS NAOS, OR OUTSIDE THE DESIGNATED LIMITS OF CONSTRUCTION ENVELOPE.
 - ALL NAOS AND AREA OUTSIDE OF THE LOC SHALL BE PROTECTED FROM DAMAGE PRIOR TO, AND DURING CONSTRUCTION BY THE FOLLOW METHODS:
 - A REGISTERED LAND SURVEYOR SHALL STAKE ALL NAOS AND LOC DISTURBANCE BASED ON THIS EXHIBIT.
 - + THREE (3) FOOT TALL STEEL REBAR, OR CITY OF SCOTTSDALE INSPECTION SERVICES APPROVED SIMILAR, SHALL BE SET ALONG THE NAOS AND LOC, AND CONNECTED WITH GOLD ROPING BY THE CONTRACTOR PRIOR TO ANY CLEARING OR GRADING.
 - ALL CACTUS SUBJECT TO THE CITY OF SCOTTSDALE'S NATIVE PLANT ORDINANCE DIRECTLY ADJACENT, WITHIN TWO FEET, OF THE NAOS AND LOC LINE SHALL BE FENCED WITH WIRE FENCING TO PREVENT DAMAGE.
 - THE CONTRACTOR SHALL MAINTAIN THE STAKING, ROPING, AND FENCING INTACT DURING THE DURATION OF THE CONSTRUCTION ACTIVITY.
 - THE CONTRACTOR SHALL REMOVE STAKING, ROPING, AND FENCING AFTER RECEIPT OF THE LETTER OF ACCEPTANCE/CERTIFICATE OF OCCUPANCY FROM THE CITY OF SCOTTSDALE FOR ALL CONSTRUCTION WORK.



1 LANDSCAPE PLAN
40 SCALE

DEVELOPMENT SUMMARY TABLE

GROSS LOT AREA	490,871 SF
NET LOT AREA	254,235 SF
REQUIRED OPEN SPACE:	63,588 SF
OPEN SPACE PROVIDED:	111,618 SF
LANDSCAPE AREA ON SITE:	148,566 SF
LANDSCAPE AREA ON RIGHT-OF-WAY:	N/A - EXISTING
PARKING LOT LANDSCAPING REQUIRED:	67,400 SF
PARKING LOT LANDSCAPING PROVIDED:	16,600 SF

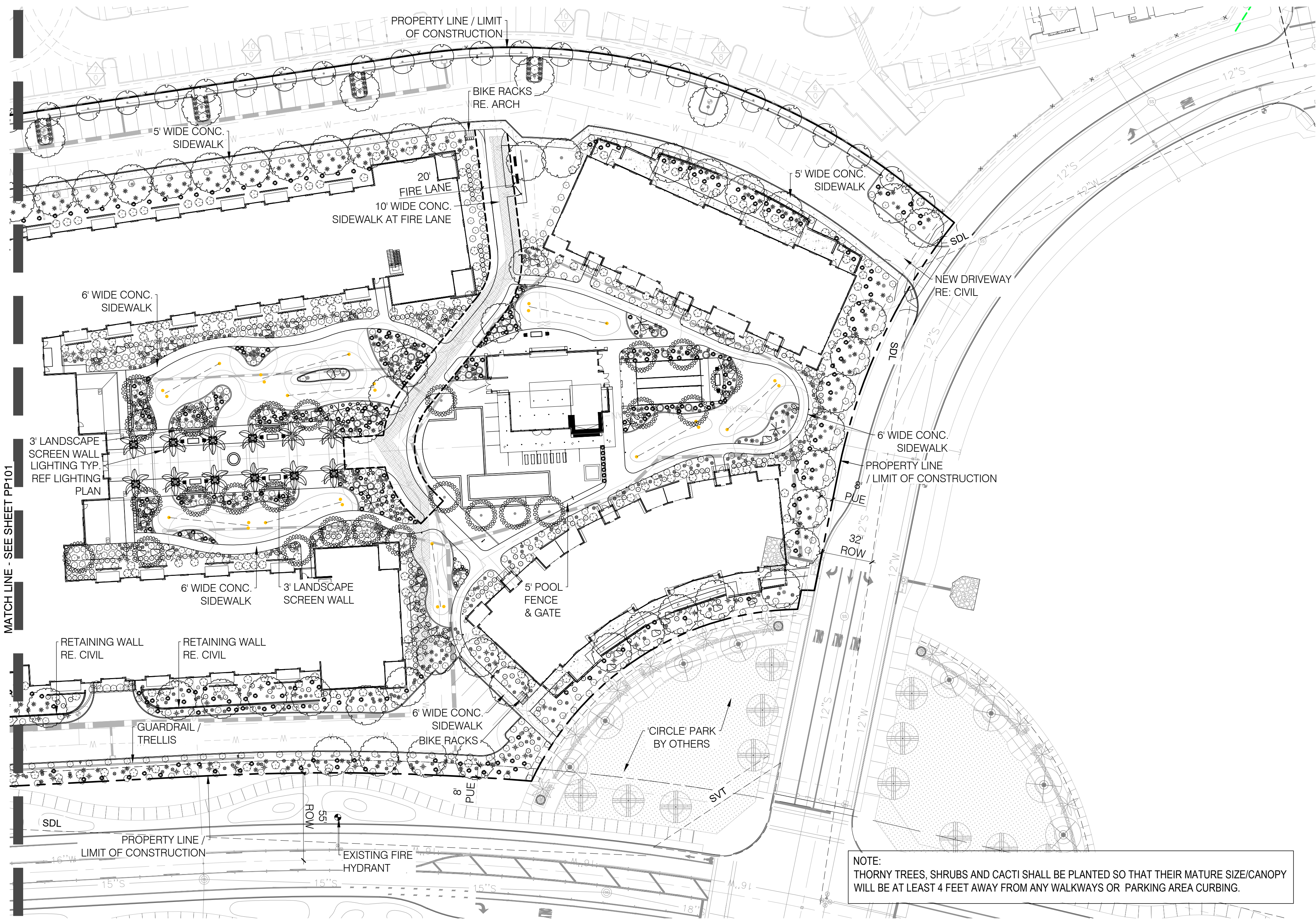
LAYOUT LEGEND

SYMBOL	DESCRIPTION
	STREET SIGN BY CIVIL
	EXISTING STREET LIGHT TO REMAIN
	PARCEL LINE
	LIMIT OF WORK
	PUBLIC UTILITY EASEMENT (PUE)
	RIGHT OF WAY (ROW)
	CENTER LINE (ROADWAY)
	MATCHLINE

KEY MAP:



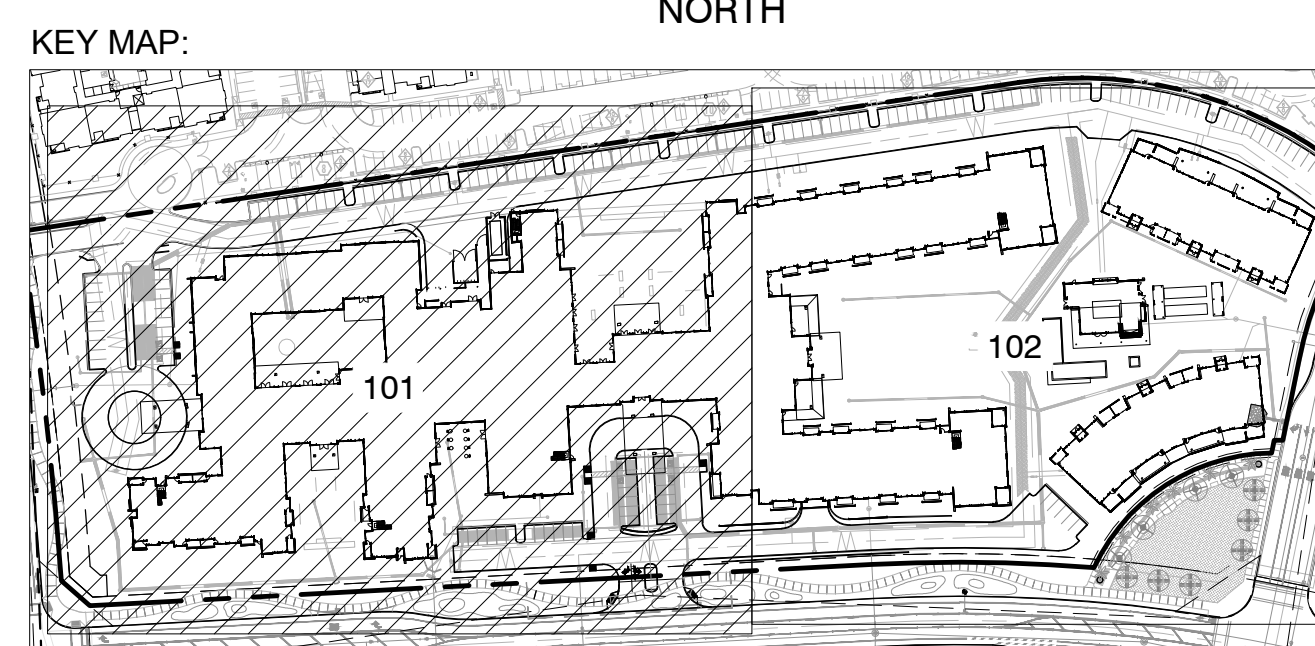
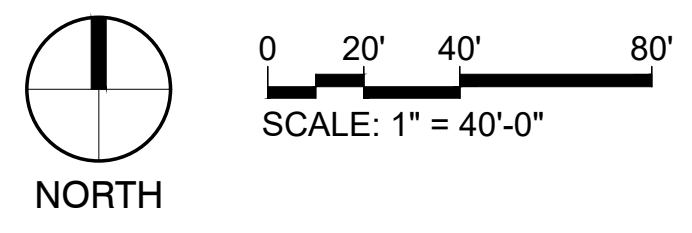
PLANT SCHEDULE		
TREES	BOTANICAL / COMMON NAME	SIZE
	CERCIDIMUM X 'AZT' AZT THORNLESS PALO VERDE	24" BOX
	CHILOPSIS LINEARIS DESERT WILLOW	24" BOX
	PHOENIX DACTYLIFERA DATE PALM	24" BOX
	PROSOPIS ALBA ARGENTINE MESQUITE	36" BOX
	SALVAGE # REF. INVENTORY LIST	VARIES
	SOPHORA SECUNDIFLORA TEXAS MOUNTAIN LAUREL	36" BOX, 2" CAL
SHRUBS	BOTANICAL / COMMON NAME	SIZE
	ABUTILON PALMERI INDIAN MALLOW	5 GAL
	AGAVE AMERICANA CENTURY PLANT	5 GAL
	AGAVE VILMORINIANA OCTOPUS AGAVE	5 GAL
	BERLANDIERA LYRATA LYRELEAF GREENEYES	5 GAL
	DASYLIRON LONGISSIMUM TOOTHLESS DESERT SPOON	5 GAL
	FOUQUIERIA SPLENDENS OCOTILLO	5 SPEARS
	HESPERALOE PARVIFLORA BRAKELIGHTS RED YUCCA	5 GAL
	JUSTICIA CALIFORNICA CHUPAROSA	5 GAL
	LEUCOPHYLLUM FRUTESCENS TEXAS SAGE	5 GAL
	MACHAERANTHERA TANACETIFOLIA TAHOKA DAISY	5 GAL
	MUHLENBERGIA CAPILLARIS PINK MUHLY GRASS	5 GAL
	MUHLENBERGIA RIGIDA 'NASHVILLE' TM PURPLE MUHLY	5 GAL
	PORTULACARIA AFRA ELEPHANT BUSH	5 GAL
	ROSMARINUS OFFICINALIS 'IRENE' TM IRENE TRAILING ROSEMARY	5 GAL
	SALVIA CHAMAEDRYOIDES MEXICAN BLUE SAGE	5 GAL
	SALVIA GREGGII AUTUMN SAGE	5 GAL
	SALVIA LEUCOPHYLLA PURPLE SAGE	5 GAL
	YUCCA GLORIOSA RECURVIFOLIA 'WALBRISTAR' BRIGHT STAR SPANISH DAGGER	5 GAL



1 LANDSCAPE PLAN
40 SCALE

LAYOUT LEGEND

SYMBOL	DESCRIPTION
	STREET SIGN BY CIVIL
	EXISTING STREET LIGHT TO REMAIN
	PARCEL LINE
	LIMIT OF WORK
	PUBLIC UTILITY EASEMENT (PUE)
	RIGHT OF WAY (ROW)
	CENTER LINE (ROADWAY)
	MATCHLINE



PLANT SCHEDULE		
TREES	BOTANICAL / COMMON NAME	SIZE
	CERCIDIUM X 'AZT' AZT THORNLESS PALO VERDE	24" BOX
	CHILOPSIS LINEARIS DESERT WILLOW	24" BOX
	PHOENIX DACTYLIFERA DATE PALM	24" BOX
	PROSOPIS ALBA ARGENTINE MESQUITE	36" BOX
	SALVAGE # REF. INVENTORY LIST	VARIES
	SOPHORA SECUNDIFLORA TEXAS MOUNTAIN LAUREL	36" BOX, 2" CAL
SHRUBS	BOTANICAL / COMMON NAME	SIZE
	ABUTILON PALMERI INDIAN MALLOW	5 GAL
	AGAVE AMERICANA CENTURY PLANT	5 GAL
	AGAVE VILMORINIANA OCTOPUS AGAVE	5 GAL
	BERLANDIERA LYRATA LYRELEAF GREENEYES	5 GAL
	DASYLIRION LONGISSIMUM TOOTHLESS DESERT SPOON	5 GAL
	FOUQUIERIA SPLENDENS OCOTILLO	5 SPEARS
	HESPERALOE PARVIFLORA BRAKELIGHTS RED YUCCA	5 GAL
	JUSTICIA CALIFORNICA CHUPAROSA	5 GAL
	LEUCOPHYLLUM FRUTESCENS TEXAS SAGE	5 GAL
	MACHAERANTHERA TANACETIFOLIA TAHOKA DAISY	5 GAL
	MUHLENBERGIA CAPILLARIS PINK MUHLY GRASS	5 GAL
	MUHLENBERGIA RIGIDA 'NASHVILLE' TM PURPLE MUHLY	5 GAL
	PORTULACARIA AFRA ELEPHANT BUSH	5 GAL
	ROSMARINUS OFFICINALIS 'IRENE' TM IRENE TRAILING ROSEMARY	5 GAL
	SALVIA CHAMAEDRYOIDES MEXICAN BLUE SAGE	5 GAL
	SALVIA GREGGII AUTUMN SAGE	5 GAL
	SALVIA LEUCOPHYLLA PURPLE SAGE	5 GAL
	YUCCA GLORIOSA RECURVIFOLIA 'WALBRISTAR' BRIGHT STAR SPANISH DAGGER	5 GAL