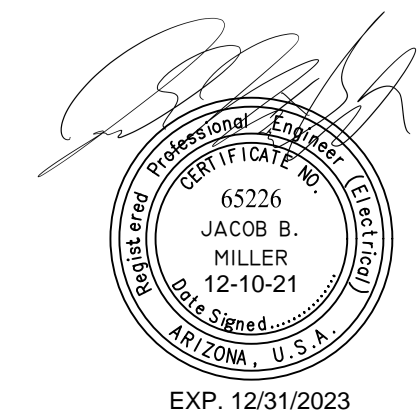
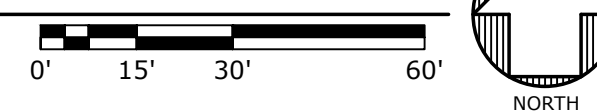


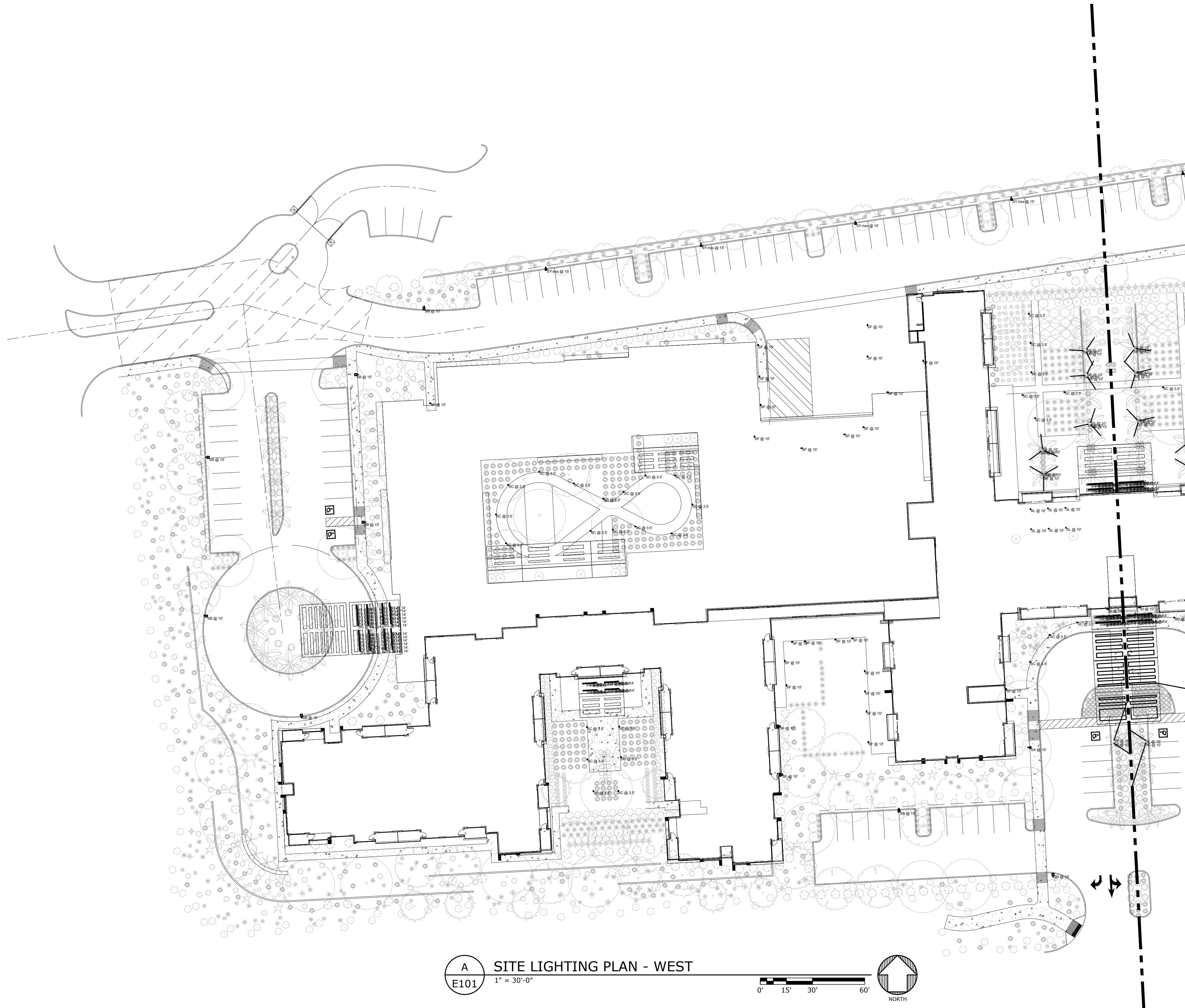
A
E100
SITE LIGHTING PLAN - EAST
1" = 30'-0"



Vi Living
Vi at Cavasson
NEC Miller Road and Cavasson Blvd., Scottsdale, AZ 85255

orcutt|winslow
ARCHITECTURE PLANNING INTERIOR DESIGN

SITE
LIGHTING
PLAN - EAST
E100

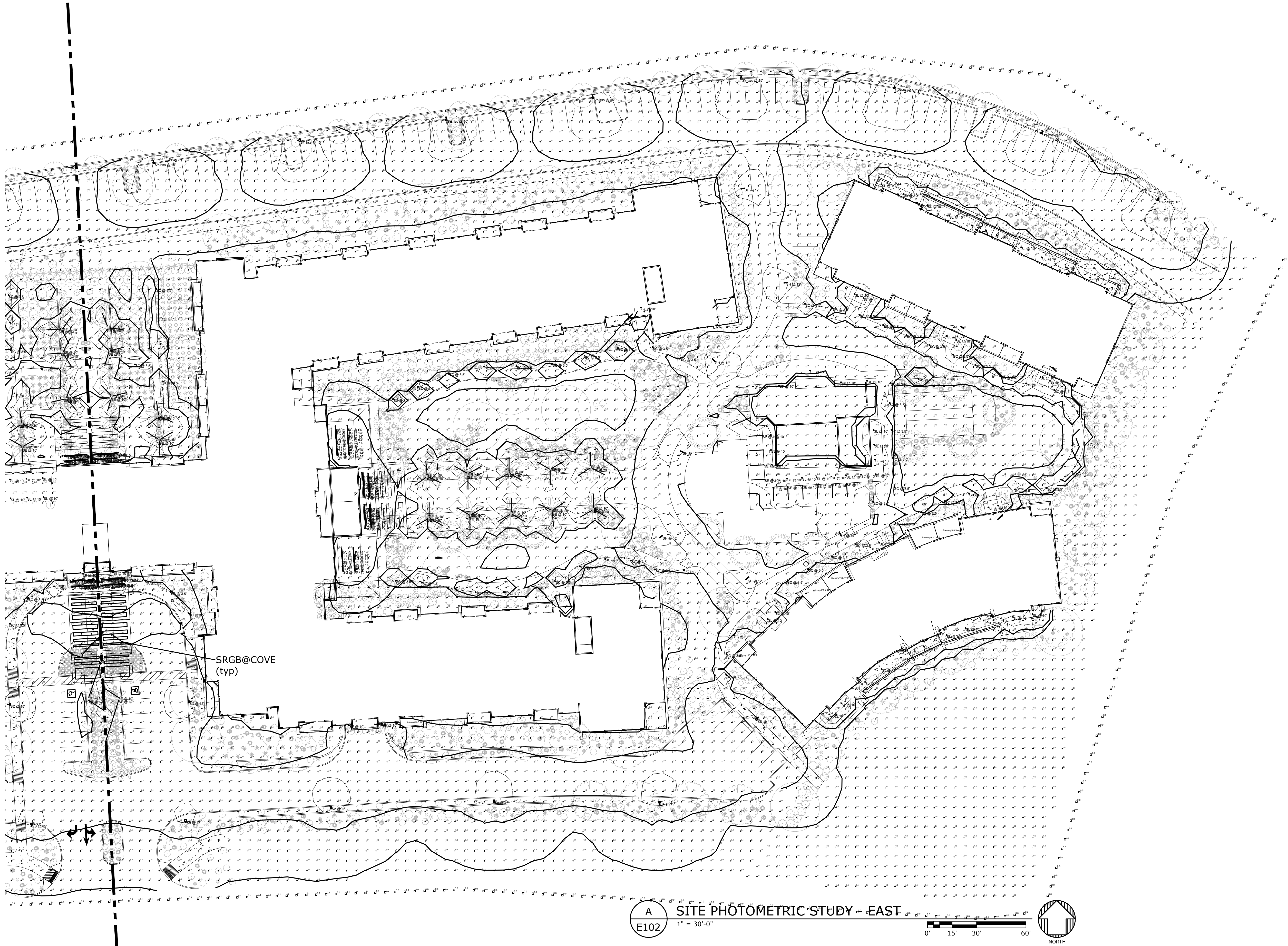


msa
ENGINEERING CONSULTANTS
IMEG
7878 N 16th Street, Suite 140
Phoenix, AZ 85020
602.943.8424
msa-ec.com
A21058

Vi Living
Vi at Cavasson
NEC Miller Road and Cavasson Blvd., Scottsdale, AZ 85255

orcutt|winslow
ARCHITECTURE PLANNING INTERIOR DESIGN

**SITE
LIGHTING
PLAN - WEST
E101**



| Symbol | Area | Quantity | Plant/Species | Plant/Species | Plant/Species | Plant/Species | Plant/Species | Plant/Species | Plant/Species |
|---------|---------|----------|---------------|---------------|---------------|---------------|---------------|---------------|---------------|
| SA | SA | 3 | Shrub | Shrub | Shrub | Shrub | Shrub | Shrub | Shrub |
| SB | SB | 10 | Shrub | Shrub | Shrub | Shrub | Shrub | Shrub | Shrub |
| SC | SC | 10 | Shrub | Shrub | Shrub | Shrub | Shrub | Shrub | Shrub |
| SD | SD | 3 | Shrub | Shrub | Shrub | Shrub | Shrub | Shrub | Shrub |
| SE | SE | 10 | Shrub | Shrub | Shrub | Shrub | Shrub | Shrub | Shrub |
| SF | SF | 10 | Shrub | Shrub | Shrub | Shrub | Shrub | Shrub | Shrub |
| SG | SG | 10 | Shrub | Shrub | Shrub | Shrub | Shrub | Shrub | Shrub |
| SH | SH | 3 | Shrub | Shrub | Shrub | Shrub | Shrub | Shrub | Shrub |
| SI | SI | 3 | Shrub | Shrub | Shrub | Shrub | Shrub | Shrub | Shrub |
| SJ | SJ | 3 | Shrub | Shrub | Shrub | Shrub | Shrub | Shrub | Shrub |
| SK | SK | 3 | Shrub | Shrub | Shrub | Shrub | Shrub | Shrub | Shrub |
| SL | SL | 10 | Shrub | Shrub | Shrub | Shrub | Shrub | Shrub | Shrub |
| SY | SY | 3 | Shrub | Shrub | Shrub | Shrub | Shrub | Shrub | Shrub |
| SY-Tree | SY-Tree | 10 | Shrub | Shrub | Shrub | Shrub | Shrub | Shrub | Shrub |

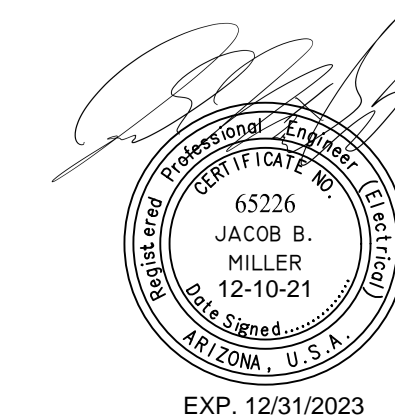
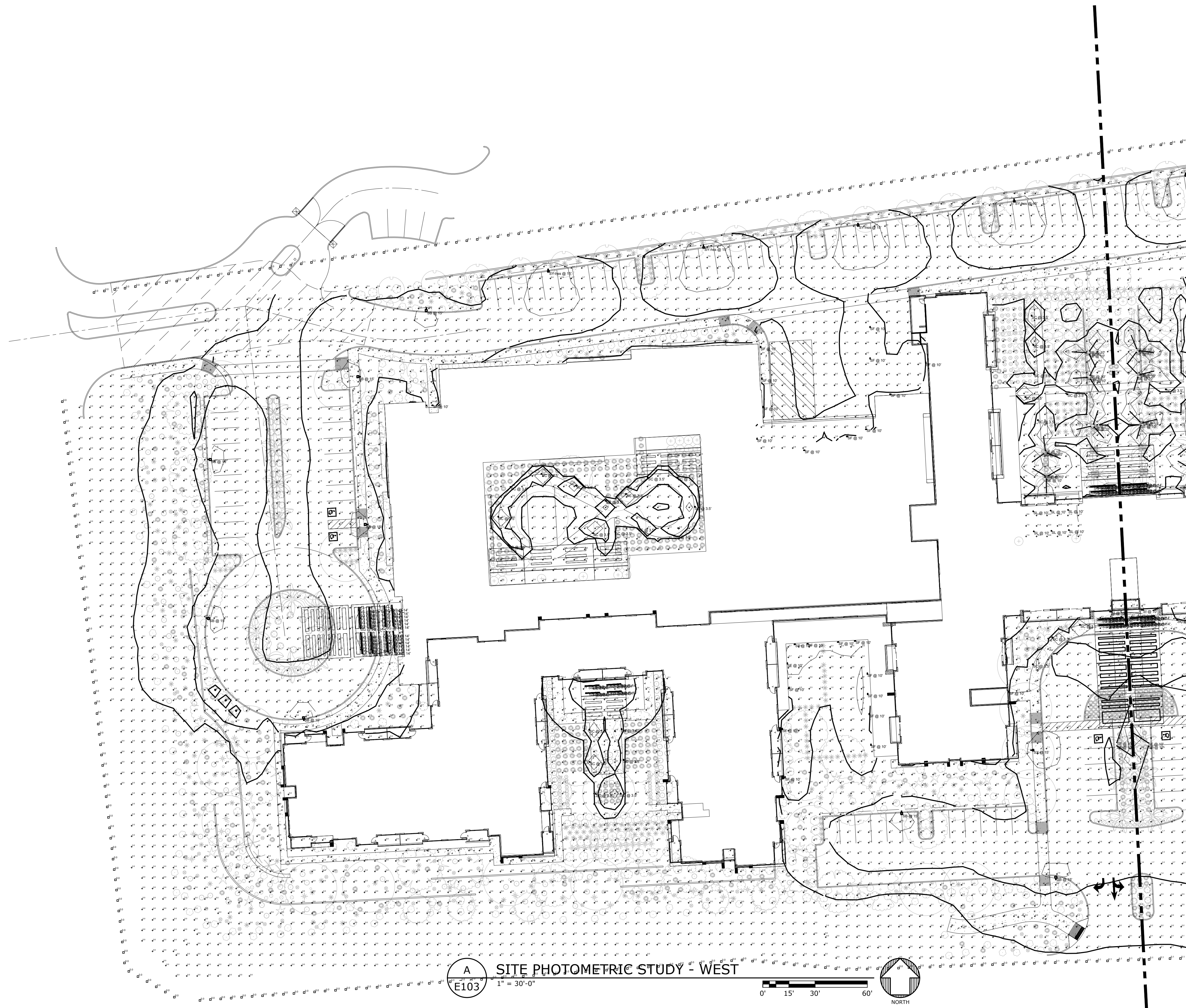
| Statistics | | | | | | |
|------------------------------------|--------|--------|---------|--------|---------|---------|
| Description | Symbol | Avg | Max | Min | Max/Min | Avg/Min |
| EAST LANDSCAPE PERIMETER | + | 0.0 fc | 2.9 fc | 0.0 fc | N/A | N/A |
| FIRE ROAD ENTRY AND DOG PARK | + | 1.4 fc | 7.8 fc | 0.1 fc | 78.0:1 | 14.0:1 |
| FRONT ENTRY | + | 4.8 fc | 6.1 fc | 2.6 fc | 2.3:1 | 1.8:1 |
| INTERIOR OPEN SPACE | + | 1.5 fc | 18.8 fc | 0.0 fc | N/A | N/A |
| LOADING DOCK | + | 1.5 fc | 5.0 fc | 0.3 fc | 25.0:1 | 7.5:1 |
| MEMORY CARE COURT YARD | + | 0.7 fc | 22.4 fc | 0.0 fc | N/A | N/A |
| NORTH BLDG ADJACENT LAND SCAP | + | 0.2 fc | 0.8 fc | 0.0 fc | N/A | N/A |
| NORTH COURTYARD | + | 2.3 fc | 35.3 fc | 0.0 fc | N/A | N/A |
| NORTH DRIVE | + | 2.6 fc | 8.9 fc | 0.0 fc | N/A | N/A |
| NORTH PERIMETER LANDSCAPE | + | 2.1 fc | 8.7 fc | 0.0 fc | N/A | N/A |
| NORTH SIDEWALK | + | 0.4 fc | 1.7 fc | 0.1 fc | 17.0:1 | 4.0:1 |
| OPEN SPACE BETWEEN BUILDINGS | + | 2.5 fc | 22.9 fc | 0.0 fc | N/A | N/A |
| PATIO | + | 9.6 fc | 12.6 fc | 4.0 fc | 3.2:1 | 2.4:1 |
| PORTECOCHERE ADJACENT LANDSCAPE | + | 1.0 fc | 6.9 fc | 0.0 fc | N/A | N/A |
| PORTECOCHERE ADJACENT LANDSCAPE | + | 1.4 fc | 7.8 fc | 0.0 fc | N/A | N/A |
| ROUND ABOUT DRIVE | + | 2.0 fc | 7.4 fc | 0.2 fc | 37.0:1 | 10.0:1 |
| SOUTH BLDG ADJACENT LANDSCAPE | + | 0.5 fc | 2.8 fc | 0.0 fc | N/A | N/A |
| SOUTH COURTYARD | + | 2.2 fc | 8.0 fc | 0.2 fc | 40.0:1 | 11.0:1 |
| SOUTH COURTYARD | + | 0.5 fc | 7.4 fc | 0.0 fc | N/A | N/A |
| SOUTH EAST LANDSCAPE PERIMETER | + | 0.5 fc | 15.0 fc | 0.0 fc | N/A | N/A |
| SOUTH LANDSCAPE ALONG STREET | + | 0.6 fc | 7.1 fc | 0.0 fc | N/A | N/A |
| SOUTH PARKING LOT AND PORTECOCHERE | + | 2.4 fc | 7.1 fc | 0.2 fc | 35.5:1 | 12.0:1 |
| SOUTH PARKING SIDEWALK | + | 1.9 fc | 15.3 fc | 0.1 fc | 153.0:1 | 19.0:1 |
| SOUTHWEST LANDSCAPE AREA | + | 0.0 fc | 0.9 fc | 0.0 fc | N/A | N/A |
| TRESPASS - EAST | □ | 0.0 fc | 0.0 fc | 0.0 fc | N/A | N/A |
| TRESPASS - NORTH | □ | 0.2 fc | 0.7 fc | 0.0 fc | N/A | N/A |
| TRESPASS - SOUTH | □ | 0.0 fc | 0.1 fc | 0.0 fc | N/A | N/A |
| TRESPASS - WEST | □ | 0.0 fc | 0.0 fc | 0.0 fc | N/A | N/A |
| VILLA NORTH SIDEWALK | + | 2.2 fc | 10.4 fc | 0.0 fc | N/A | N/A |
| WEST BLDG ADJACENT LANDSCAPE | + | 2.1 fc | 7.6 fc | 0.0 fc | N/A | N/A |
| WEST LAND SCAP AREA | + | 0.2 fc | 4.6 fc | 0.0 fc | N/A | N/A |



Vi Living
Vi at Cavasson
NEC Miller Road and Cavasson Blvd., Scottsdale, AZ 85255

orcutt|winslow
ARCHITECTURE PLANNING INTERIOR DESIGN

SITE
PHOTOMETRIC
STUDY - EAST
E102



Vi Living
Vi at Cavasson
NEC Miller Road and Cavasson Blvd., Scottsdale, AZ 85255

orcutt|winslow
ARCHITECTURE PLANNING INTERIOR DESIGN

SITE
PHOTOMETRIC
STUDY - WEST
E103

[illegible]

FIXTURE TYPE SC

TARGETTI

ZEDGE PRO BOLLARD

Professional LED Bollard

Concept: Professional high-performance LED bollard with an innovative optical system designed to be the top quality luminaire. Material can be used both indoors and outdoor applications.

Material: Cast aluminium die-cast. The bollard is extremely robust, independently tested against impact and heat with no need for powder coated cathodic reduction paint. Anodized aluminium coating will not rub off, because it comes from the metal and does not come from the surface. Independently tested against corrosion. "Corrosal" test.

Beam: Full, high efficiency LED chip on a board.

Optics: The internal optical system is composed of 21 installation bollards, reflective coupled to high efficiency die-cast aluminium reflectors and holographic fibres. Light comes into the bollard, enters the glass, is available in three different angles: ZEDGE - deep beam, HEDGE - wide beam, ADJUSTABLE - allows to change from one beam to the other in a certain way by rotating the 21 optical elements.

Lighting: Available with warm white or cool white LED chips. The LED chips dissipate heat both from the sides and from the bottom. Optimal Ground Ambient lighting ratio for installation in corridors, and swimming.

Decor: Integrated in the 300 mm diameter x 1000 mm Finish: Frontal Panel, Optimal Integral LED emergency lighting panel with a emergency lighting battery pack. Battery will operate for 48 hours if a.s.d. for 30 minutes. Ambient temperature must not go below 0°C and not exceed 50°C.

Body: Body in extruded aluminium. Finish: Frontal (Yellow/Beige/Stone/ Bronze/ RAL 9005) - Frontal White (Color White, Sandstone Gray)

Weight: 25 kg

Technical Data: 2700K / 3000K / 3000K / 4000K

CEI: 8856, 8857, 8858, 8859

Delivered Luminaire: 2700K 3000K 3000K 4000K

Wide Opt: 44.0° 47.0° 47.0° 48.0°

Deep Opt: 68.0° 68.0° 73.0° 73.0°

Lighting: 100000lm 100000lm 100000lm 100000lm

Compatibility: for LED luminaire are provided measurements that comply with ENEC LUMID

Lighting Voltage: 100V/277V/NA/300V/NA

Lighting Voltage: 100V/277V/NA/300V/NA

Lighting Voltage: 100V/277V/NA/300V/NA

Lighting Voltage: 100V/277V/NA/300V/NA

Lighting Voltage: 100V/277V/NA/300V/NA

Lighting Voltage: 100V/277V/NA/300V/NA

Lighting Voltage: 100V/277V/NA/300V/NA

Lighting Voltage: 100V/277V/NA/300V/NA

Lighting Voltage: 100V/277V/NA/300V/NA

Lighting Voltage: 100V/277V/NA/300V/NA

Lighting Voltage: 100V/277V/NA/300V/NA

Lighting Voltage: 100V/277V/NA/300V/NA

Lighting Voltage: 100V/277V/NA/300V/NA

Lighting Voltage: 100V/277V/NA/300V/NA

Lighting Voltage: 100V/277V/NA/300V/NA

Lighting Voltage: 100V/277V/NA/300V/NA

Lighting Voltage: 100V/277V/NA/300V/NA

Lighting Voltage: 100V/277V/NA/300V/NA

Lighting Voltage: 100V/277V/NA/300V/NA

Lighting Voltage: 100V/277V/NA/300V/NA

Lighting Voltage: 100V/277V/NA/300V/NA

Lighting Voltage: 100V/277V/NA/300V/NA

Lighting Voltage: 100V/277V/NA/300V/NA

Lighting Voltage: 100V/277V/NA/300V/NA

Lighting Voltage: 100V/277V/NA/300V/NA

Lighting Voltage: 100V/277V/NA/300V/NA

Lighting Voltage: 100V/277V/NA/300V/NA

Lighting Voltage: 100V/277V/NA/300V/NA

Lighting Voltage: 100V/277V/NA/300V/NA

Lighting Voltage: 100V/277V/NA/300V/NA

Lighting Voltage: 100V/277V/NA/300V/NA

Lighting Voltage: 100V/277V/NA/300V/NA

Lighting Voltage: 100V/277V/NA/300V/NA

Lighting Voltage: 100V/277V/NA/300V/NA

Lighting Voltage: 100V/277V/NA/300V/NA

Lighting Voltage: 100V/277V/NA/300V/NA

Lighting Voltage: 100V/277V/NA/300V/NA

Lighting Voltage: 100V/277V/NA/300V/NA

Lighting Voltage: 100V/277V/NA/300V/NA

Lighting Voltage: 100V/277V/NA/300V/NA

Lighting Voltage: 100V/277V/NA/300V/NA

Lighting Voltage: 100V/277V/NA/300V/NA

Lighting Voltage: 100V/277V/NA/300V/NA

Lighting Voltage: 100V/277V/NA/300V/NA

[illegible]

FIXTURE TYPE SF

WPK LED Wall Packs

WPK LED wall pack (front and side view) (mm)

Specifications

Front View

Side View

| Model | Height (mm) | Width (mm) | Depth (mm) | Color Temperature (K) | Weight (kg) |
|-------|-------------|------------|------------|-----------------------|-------------|
| WPK1 | 147 (140) | 100 (100) | 37.8 (38) | 4000 (5000) | 1.10 (1.05) |
| WPK2 | 147 (140) | 100 (100) | 37.8 (38) | 4000 (5000) | 1.20 (1.15) |
| WPK3 | 147 (140) | 100 (100) | 37.8 (38) | 4000 (5000) | 1.30 (1.25) |
| WPK4 | 147 (140) | 100 (100) | 37.8 (38) | 4000 (5000) | 1.40 (1.35) |
| WPK5 | 147 (140) | 100 (100) | 37.8 (38) | 4000 (5000) | 1.50 (1.45) |

Introduction

The WPK LED wall packs are energy-efficient, cost-effective, and aesthetically appealing fixtures for both HID wall pack replacement and new construction opportunities. Available in three sizes, the WPK family delivers 1,500 to 2,000 lumens with a wide, uniform distribution.

The WPK full cut-off solution fully cover the footcandle of the LED glass while also providing a long life, providing a neat installation and an upgraded appearance. Reliable IP66 construction and excellent LED luminaire maintenance ensure a long life cycle. Photocell and emergency sensor options make WPK ideal for every well lit morning light application.

Ordering Information

EXAMPLE: WPK LED 40K MVOLT DBXDK

| Series | Order Information | Options | Special | Notes |
|----------|-------------------|-----------------|---------|----------------|
| WPK LED1 | 1,500 lumens, 40K | DBX DBXDK DBXDK | None | DBXDK: Defence |
| WPK LED2 | 1,500 lumens, 40K | DBX DBXDK DBXDK | None | DBXDK: Defence |
| WPK LED3 | 1,500 lumens, 40K | DBX DBXDK DBXDK | None | DBXDK: Defence |
| WPK LED4 | 1,500 lumens, 40K | DBX DBXDK DBXDK | None | DBXDK: Defence |
| WPK LED5 | 1,500 lumens, 40K | DBX DBXDK DBXDK | None | DBXDK: Defence |

Note: The lumens output and input power shown in the following table are average representations of configuration options. Specific values are available on request.

FEATURES & SPECIFICATIONS

PERFORMANCE
The WPK LED wall packs provide a wide, uniform distribution of light for the one-to-one replacement of existing wall pack units. The WPK LED wall packs are available in three sizes, providing a wide, uniform distribution of light for the one-to-one replacement of existing wall pack units. The WPK LED wall packs are available in three sizes, providing a wide, uniform distribution of light for the one-to-one replacement of existing wall pack units.

CONSTRUCTION
The WPK LED wall packs are constructed from high quality LED and LED luminaire components of high quality LED and LED luminaire components. The WPK LED wall packs are constructed from high quality LED and LED luminaire components of high quality LED and LED luminaire components. The WPK LED wall packs are constructed from high quality LED and LED luminaire components of high quality LED and LED luminaire components.

ELECTRICAL
The WPK LED wall packs are constructed from high quality LED and LED luminaire components of high quality LED and LED luminaire components. The WPK LED wall packs are constructed from high quality LED and LED luminaire components of high quality LED and LED luminaire components. The WPK LED wall packs are constructed from high quality LED and LED luminaire components of high quality LED and LED luminaire components.

INSTALLATION

The WPK LED wall packs are constructed from high quality LED and LED luminaire components of high quality LED and LED luminaire components. The WPK LED wall packs are constructed from high quality LED and LED luminaire components of high quality LED and LED luminaire components. The WPK LED wall packs are constructed from high quality LED and LED luminaire components of high quality LED and LED luminaire components.

WARRANTY

The WPK LED wall packs are constructed from high quality LED and LED luminaire components of high quality LED and LED luminaire components. The WPK LED wall packs are constructed from high quality LED and LED luminaire components of high quality LED and LED luminaire components. The WPK LED wall packs are constructed from high quality LED and LED luminaire components of high quality LED and LED luminaire components.

One Chongqing Huiyuan Road, Chongqing, China
© 2020 2021 All rights reserved by All rights reserved.

WPK LED
Rev. 01/2021

COMMERCIAL OUTDOOR

FIXTURE TYPE SG

MARK ARCHITECTURAL LIGHTING®

Slot 2 LED Recessed Linear

Type:

Project:

Slot 2 LED takes both form and function a step further with increased efficiency and integral controls creating a digitally addressed luminaire that is perfect where visually harmonious illumination and energy efficiency are desired.

Slot 2 LED is the ideal choice for spaces that emphasize lines and clean contemporary design. It is a perfect fit for Architectural and Hospitality applications. A recessed line option provides added dimension to the sleek, linear design and the Flush trim now has a Wet Label option.

Catalog Number:
SLOT 2 TYPE HERE, Recessed/Flush

Recessed

Specification Features

Housing: 2" x 2", 3", 4", 5", 6", 8" and continuous runs up to 10' (maximum in 10' increments). Matte housing with anodized aluminum extrusion and anodized ceiling trim.

Finish: Powdered high reflective matte white powder coat.

Reflector: Powdered, solid white, high reflective matte white powder coat, 95% reflectivity.

Front Lens: Powdered, solid white, high reflective matte acrylic finish lens, 95% reflectivity.

Regulated Load: Up to 50W transmissive static acrylic lens.

Mounting: Remount. Available in black/white, 9/16" std grid or 1/2" std grid. Mounting via ceiling, or 9/16" mounted into 1/2" grid.

Power: 100W, 150W, 200W, 250W, 300W, 350W, 400W, 450W, 500W, 550W, 600W, 650W, 700W, 750W, 800W, 850W, 900W, 950W, 1000W.

Warranty: 5-year limited warranty. Complete warranty terms located at www.marklighting.com.

Notes: Actual performance may differ as a result of ambient temperature and application.

Options: All items are digital or digital/analogue, measured output and beam spread are approximate.

All specifications subject to change without notice.

Technical Drawing

| Fixture Performance - 9/16" | 400 LUM | | | 500 LUM | | |
|-----------------------------|---------|-----|-----|---------|-----|-----|
| Fixture Type | SLP | FLP | MLP | SLP | FLP | MLP |
| Continuous Length | 234 | 306 | 456 | 334 | 434 | 634 |
| Round Mount | 4 | 7 | 8 | 6 | 7 | 11 |
| Linear Mount | 60 | 80 | 80 | 91 | 120 | 82 |

FLP = Foot Candles (lm/ft²) at 10' distance

MLP = Mean Lumen Per Foot (lm/ft) at 10' distance

SLP = Surface Lumens Per Foot (lm/ft) at 10' distance

LED Components: 7575 Series LED chips (available in 80 or 90 CRI)

LED Life: Rated 65,000 hours (L80) at 25°C ambient temperature.

Color Rendering: The Accu-Beam beam hood for the LED components use a precise narrow beam that achieves a consistent color temperature and beam spread.

Beam Spread: Can be varied in increments greater than 2.5° (Standard 2.5°/Standard) along the beam body from beam to beam.

Driver: LEDs constant current driver offers designers ultra-smooth dimming resolution from 1% to 100%, while operating flicker free, low current inrush, 85% efficiency and low EMI.

Occurrence Sensor (POS) and Photocell (PCS)

Integrated Controls: Optional LightLink embedded controls enable intuitive addressing - allowing it to be digitally communicated with other digital devices and systems. Includes digital dimmers, switches, occupancy control devices and sensors. Simply connect at the light end (occurrence sensor) and at the control end (LightLink).

Photocell: For automatic information offer

www.marklighting.com

marklighting.com | 1-800-824-0284 | ©2023 Slot 2 LED Architectural Lighting, Inc. All Rights Reserved. We reserve the right to change designs, materials and finish in any way without notice and without obligation to replace or refund.

Slot 2 | 01-23-RECESSED-000000000000

[illegible]

TEX

ARCHITECTURAL SCALE, WET LISTED EXTERIOR WALL SCIENCE

alva

The Alva Experience

APPLICATIONS

Direct/Indirect luminaires for exterior applications: Recessing, down, billy entrances, on columns, on building facades, and between windows. Suitable for marine environments. Materials specifically for wet-to-corrosive and harsh environments.

SIZES

- 30" x 12" x 4" F.O. 15 lbs
- 30" x 12" x 4" F.O. 15 lbs

MOUNTING

- 1/2 inch 3/4 inch or center or end of brace
- Steel mounting system with mounting plate and cover with rubber gaskets between the junction face and mounting plate
- Can be mounted vertically or horizontally

CERTIFICATIONS

- P60 listed May 1 by Federal Maritime at High Pressure (3000psi or distance of 30ft)
- DSD CTP Type
- DSA Compliant
- AIA/CES Listed
- 100,000+ hours tested life time
- US Navy Limited Warranty (see website sheet)

LAMPING

- High efficiency fully integrated proprietary LED module
- 100 lumens per sq ft typical
- 2000K or 3000K color temp
- 1000lm per sq ft typical
- 100W (200V) or 40W light module
- 100 lumens (200 V.A.)

CONSTRUCTION

Unreinforced concrete heavy polymer glazing with industrial powder coat finish and high-pressure acrylics

SPECIFICATIONS SUBJECT TO CHANGE

ALVALIGHT.COM # 510 983 0808

FIXTURE TYPE SJ

Düggis_FL12 Aluminium (Linear profile) | stripLED (Wet location) | Driver remote (Watt over 14.4W/ft)

CRI 80

| | | | | | |
|--|-------|--------------|---------|--|----|
| | 6500K | 100 lm ... W | General | | 85 |
| | 6500K | 500 lm ... W | | | |
| | 6500K | | | | |

Düggis_FL12 (Aluminium) is a standard version, NOT intended for continuous use and cannot be modified on site to become such. For continuous runs, please refer to Düggis_M2

549 Inter-lux.com

MAESTRO 2.0

[illegible]



ACCENT FIXTURE SRGB

SPECIFICATIONS

TYPE: PROJECT





MARK COVE

NEAR COVE
DYNAMIC COLOR

HIGHLIGHTS

- Small, versatile and impactful
- Controlled aluminum construction
- RGBW - Red, Green, Blue, White produces saturated color and grayscale
- Works LED's 120 distribution
- Powerful Range 600 or 750 lumens per foot
- Efficient with up to 90 lumens per watt
- DMX with Remote Device Management
- Full complement of mounting and dimming accessories
- Manufactured in USA

SPECIFICATIONS

Reference Drawing Detail section for additional information



60° Beam Angle
120° Beam Angle
180° Beam Angle
240° Beam Angle
300° Beam Angle
360° Beam Angle
420° Beam Angle
480° Beam Angle
540° Beam Angle
600° Beam Angle
660° Beam Angle
720° Beam Angle
780° Beam Angle
840° Beam Angle
900° Beam Angle
960° Beam Angle
1020° Beam Angle
1080° Beam Angle
1140° Beam Angle
1200° Beam Angle
1260° Beam Angle
1320° Beam Angle
1380° Beam Angle
1440° Beam Angle
1500° Beam Angle
1560° Beam Angle
1620° Beam Angle
1680° Beam Angle
1740° Beam Angle
1800° Beam Angle
1860° Beam Angle
1920° Beam Angle
1980° Beam Angle
2040° Beam Angle
2100° Beam Angle
2160° Beam Angle
2220° Beam Angle
2280° Beam Angle
2340° Beam Angle
2400° Beam Angle
2460° Beam Angle
2520° Beam Angle
2580° Beam Angle
2640° Beam Angle
2700° Beam Angle
2760° Beam Angle
2820° Beam Angle
2880° Beam Angle
2940° Beam Angle
3000° Beam Angle
3060° Beam Angle
3120° Beam Angle
3180° Beam Angle
3240° Beam Angle
3300° Beam Angle
3360° Beam Angle
3420° Beam Angle
3480° Beam Angle
3540° Beam Angle
3600° Beam Angle
3660° Beam Angle
3720° Beam Angle
3780° Beam Angle
3840° Beam Angle
3900° Beam Angle
3960° Beam Angle
4020° Beam Angle
4080° Beam Angle
4140° Beam Angle
4200° Beam Angle
4260° Beam Angle
4320° Beam Angle
4380° Beam Angle
4440° Beam Angle
4500° Beam Angle
4560° Beam Angle
4620° Beam Angle
4680° Beam Angle
4740° Beam Angle
4800° Beam Angle
4860° Beam Angle
4920° Beam Angle
4980° Beam Angle
5040° Beam Angle
5100° Beam Angle
5160° Beam Angle
5220° Beam Angle
5280° Beam Angle
5340° Beam Angle
5400° Beam Angle
5460° Beam Angle
5520° Beam Angle
5580° Beam Angle
5640° Beam Angle
5700° Beam Angle
5760° Beam Angle
5820° Beam Angle
5880° Beam Angle
5940° Beam Angle
6000° Beam Angle
6060° Beam Angle
6120° Beam Angle
6180° Beam Angle
6240° Beam Angle
6300° Beam Angle
6360° Beam Angle
6420° Beam Angle
6480° Beam Angle
6540° Beam Angle
6600° Beam Angle
6660° Beam Angle
6720° Beam Angle
6780° Beam Angle
6840° Beam Angle
6900° Beam Angle
6960° Beam Angle
7020° Beam Angle
7080° Beam Angle
7140° Beam Angle
7200° Beam Angle
7260° Beam Angle
7320° Beam Angle
7380° Beam Angle
7440° Beam Angle
7500° Beam Angle
7560° Beam Angle
7620° Beam Angle
7680° Beam Angle
7740° Beam Angle
7800° Beam Angle
7860° Beam Angle
7920° Beam Angle
7980° Beam Angle
8040° Beam Angle
8100° Beam Angle
8160° Beam Angle
8220° Beam Angle
8280° Beam Angle
8340° Beam Angle
8400° Beam Angle
8460° Beam Angle
8520° Beam Angle
8580° Beam Angle
8640° Beam Angle
8700° Beam Angle
8760° Beam Angle
8820° Beam Angle
8880° Beam Angle
8940° Beam Angle
9000° Beam Angle
9060° Beam Angle
9120° Beam Angle
9180° Beam Angle
9240° Beam Angle
9300° Beam Angle
9360° Beam Angle
9420° Beam Angle
9480° Beam Angle
9540° Beam Angle
9600° Beam Angle
9660° Beam Angle
9720° Beam Angle
9780° Beam Angle
9840° Beam Angle
9900° Beam Angle
9960° Beam Angle
10020° Beam Angle
10080° Beam Angle
10140° Beam Angle
10200° Beam Angle
10260° Beam Angle
10320° Beam Angle
10380° Beam Angle
10440° Beam Angle
10500° Beam Angle
10560° Beam Angle
10620° Beam Angle
10680° Beam Angle
10740° Beam Angle
10800° Beam Angle
10860° Beam Angle
10920° Beam Angle
10980° Beam Angle
11040° Beam Angle
11100° Beam Angle
11160° Beam Angle
11220° Beam Angle
11280° Beam Angle
11340° Beam Angle
11400° Beam Angle
11460° Beam Angle
11520° Beam Angle
11580° Beam Angle
11640° Beam Angle
11700° Beam Angle
11760° Beam Angle
11820° Beam Angle
11880° Beam Angle
11940° Beam Angle
12000° Beam Angle
12060° Beam Angle
12120° Beam Angle
12180° Beam Angle
12240° Beam Angle
12300° Beam Angle
12360° Beam Angle
12420° Beam Angle
12480° Beam Angle
12540° Beam Angle
12600° Beam Angle
12660° Beam Angle
12720° Beam Angle
12780° Beam Angle
12840° Beam Angle
12900° Beam Angle
12960° Beam Angle
13020° Beam Angle
13080° Beam Angle
13140° Beam Angle
13200° Beam Angle
13260° Beam Angle
13320° Beam Angle
13380° Beam Angle
13440° Beam Angle
13500° Beam Angle
13560° Beam Angle
13620° Beam Angle
13680° Beam Angle
13740° Beam Angle
13800° Beam Angle
13860° Beam Angle
13920° Beam Angle
13980° Beam Angle
14040° Beam Angle
14100° Beam Angle
14160° Beam Angle
14220° Beam Angle
14280° Beam Angle
14340° Beam Angle
14400° Beam Angle
14460° Beam Angle
14520° Beam Angle
14580° Beam Angle
14640° Beam Angle
14700° Beam Angle
14760° Beam Angle
14820° Beam Angle
14880° Beam Angle
14940° Beam Angle
15000° Beam Angle
15060° Beam Angle
15120° Beam Angle
15180° Beam Angle
15240° Beam Angle
15300° Beam Angle
15360° Beam Angle
15420° Beam Angle
15480° Beam Angle
15540° Beam Angle
15600° Beam Angle
15660° Beam Angle
15720° Beam Angle
15780° Beam Angle
15840° Beam Angle
15900° Beam Angle
15960° Beam Angle
16020° Beam Angle
16080° Beam Angle
16140° Beam Angle
16200° Beam Angle
16260° Beam Angle
16320° Beam Angle
16380° Beam Angle
16440° Beam Angle
16500° Beam Angle
16560° Beam Angle
16620° Beam Angle
16680° Beam Angle
16740° Beam Angle
16800° Beam Angle
16860° Beam Angle
16920° Beam Angle
16980° Beam Angle
17040° Beam Angle
17100° Beam Angle
17160° Beam Angle
17220° Beam Angle
17280° Beam Angle
17340° Beam Angle
17400° Beam Angle
17460° Beam Angle
17520° Beam Angle
17580° Beam Angle
17640° Beam Angle
17700° Beam Angle
17760° Beam Angle
17820° Beam Angle
17880° Beam Angle
17940° Beam Angle
18000° Beam Angle
18060° Beam Angle
18120° Beam Angle
18180° Beam Angle
18240° Beam Angle
18300° Beam Angle
18360° Beam Angle
18420° Beam Angle
18480° Beam Angle
18540° Beam Angle
18600° Beam Angle
18660° Beam Angle
18720° Beam Angle
18780° Beam Angle
18840° Beam Angle
18900° Beam Angle
18960° Beam Angle
19020° Beam Angle
19080° Beam Angle
19140° Beam Angle
19200° Beam Angle
19260° Beam Angle
19320° Beam Angle
19380° Beam Angle
19440° Beam Angle
19500° Beam Angle
19560° Beam Angle
19620° Beam Angle
19680° Beam Angle
19740° Beam Angle
19800° Beam Angle
19860° Beam Angle
19920° Beam Angle
19980° Beam Angle
20040° Beam Angle
20100° Beam Angle
20160° Beam Angle
20220° Beam Angle
20280° Beam Angle
20340° Beam Angle
20400° Beam Angle
20460° Beam Angle
20520° Beam Angle
20580° Beam Angle
20640° Beam Angle
20700° Beam Angle
20760° Beam Angle
20820° Beam Angle
20880° Beam Angle
20940° Beam Angle
21000° Beam Angle
21060° Beam Angle
21120° Beam Angle
21180° Beam Angle
21240° Beam Angle
21300° Beam Angle
21360° Beam Angle
21420° Beam Angle
21480° Beam Angle
21540° Beam Angle
21600° Beam Angle
21660° Beam Angle
21720° Beam Angle
21780° Beam Angle
21840° Beam Angle
21900° Beam Angle
21960° Beam Angle
22020° Beam Angle
22080° Beam Angle
22140° Beam Angle
22200° Beam Angle
22260° Beam Angle
22320° Beam Angle
22380° Beam Angle
22440° Beam Angle
22500° Beam Angle
22560° Beam Angle
22620° Beam Angle
22680° Beam Angle
22740° Beam Angle
22800° Beam Angle
22860° Beam Angle