

**DRB PRESENTATION
ZOM SCOTTSDALE CAMELBACK
08.18.2022**







Mercedes Benz of Scottsdale

Sentral Old Town

Safari Condominiums

SITE

EXISTING SITE FROM SCOTTSDALE ROAD

2020

Safari Condominiums
Sentral Old Town (under construction)
W Hotel Scottsdale

Scottsdale Fashion Square

NO PARKING
FIRE LANE
CITY ORDINANCE
← →

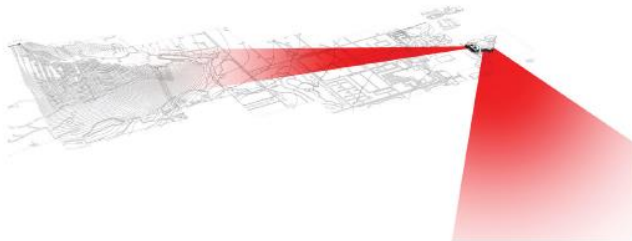
LOOKING SOUTH INTO EXISTING SITE



Concepts + Strategies rooted in the relationship with Camelback Mountain

- Framing Presence
- Shaping the Journey
- Symbiotic Relationship of Meaning

Broad moves in orientation future emphasize the view to and approach from the two distinctive characters of the site..



Camelback is, of course, a visual focus and has been since the beginning.
At the ground level, the canal plays an equal role of focus.



Azure + Hazel

A simultaneous occurrence.

There is a certain level of captivation only the terrain can give us. Camelback presents itself as a constant focal point of awe, often manipulating the environment in a way that captures attention throughout the day. The Mountain's ability to capture shadow and sun, almost directly in contrast to what is happening within the city at any given time, makes it a focal point of interest.

At a personal level, it is often the ambition for our home to capture these qualities of our environment through frame and view. No matter the context, it is about a certain level of capturing the evolving change of the day in our built environment.

What each tell us is the power in simplicity and the understanding of using bold materials in a manner that uses them to their fullest potential. With the Mountain, stone carving captures shade, shadow, sun, sky, reflection, and other attributes through one dominant form. In the spaces we love, it becomes about framing and honoring views and connections. It does not take much to do so...

For ZOM Scottsdale, our ambition is to capture the spirit of place, the warmth of activity and nature as well as the coolness of sky and reflection simultaneously and evocatively.



ZOM RESIDENTIAL
Scottsdale, Arizona

Materials

June 18th, 2021

ZOM
LIVING CRTKL

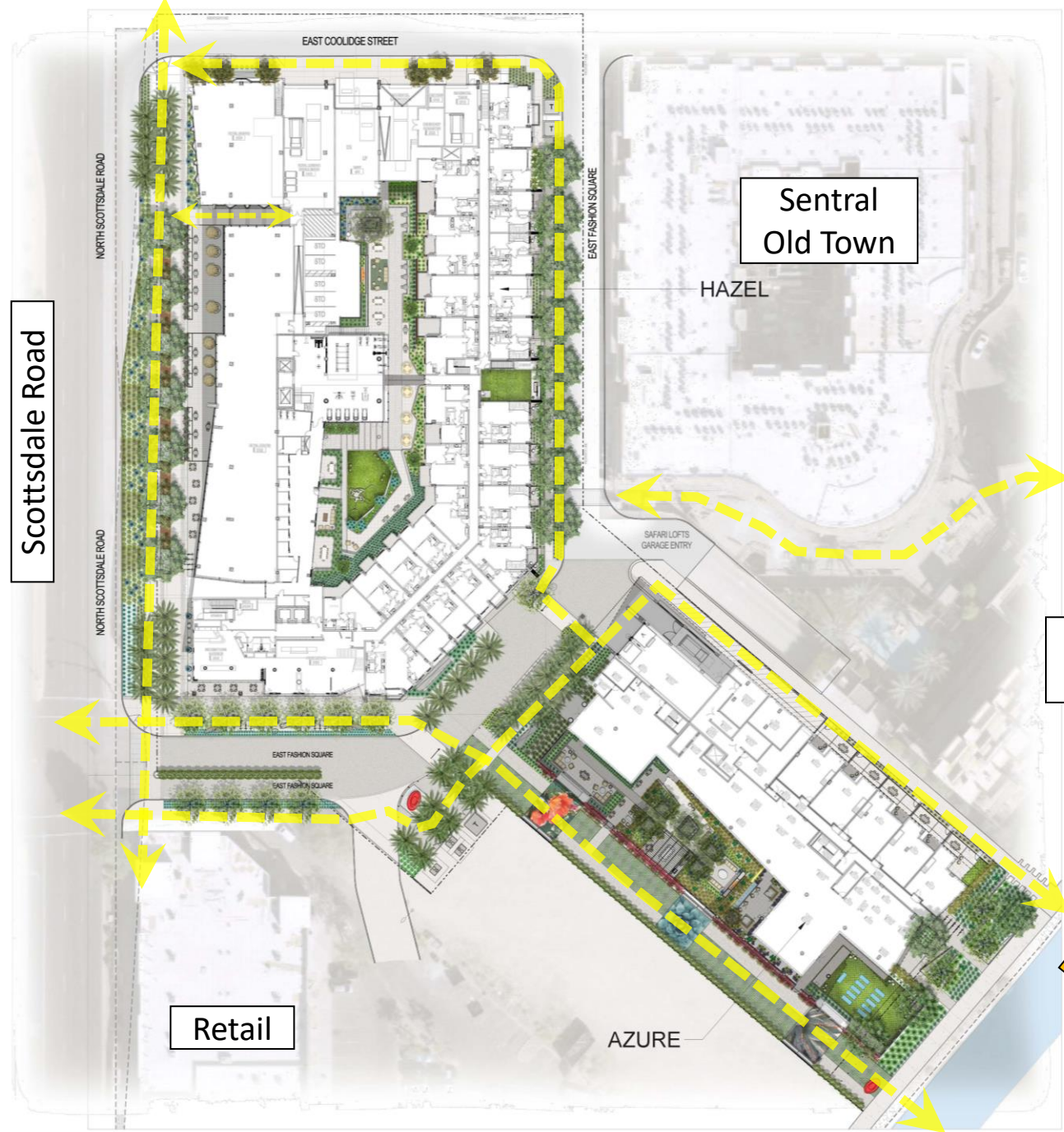
CALLISONRTKL
A DESIGN CONSULTANCY OF ARCADIS



Pedestrian Connections

Scottsdale Fashion Square

Scottsdale Road



Sentral Old Town

HAZEL

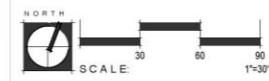
SAFARI LOFTS GARAGE ENTRY

Safari Condos

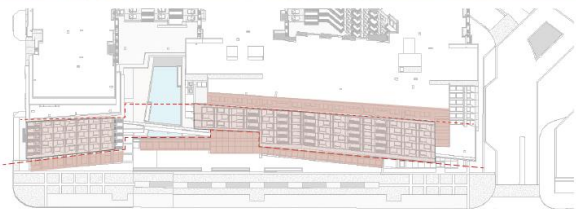
Arizona Canal

Retail

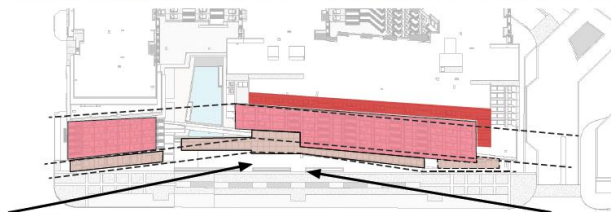
AZURE



HAZEL



The full massing is varied the most on the Scottsdale Road facade, with ribbons of massing weaving the life and scale of the street into the project.



The weaving creates optimal, enhanced views from the project and toward it.



The image of the architecture has a symbiotic relationship with Camelback Mountain, using scale and simple materials to capture the environment.

Facade becomes a series of apertures that, through simplicity in materiality and pattern, will create interest through capturing reflections and light.



Palo Verde Library is an example in Phoenix, similar in orientation. The use of iridescent panel evolves the aesthetic through a minimal and beautiful way.

CALLISON|TKL
A DESIGN CONSULTANCY OF ARCADIS







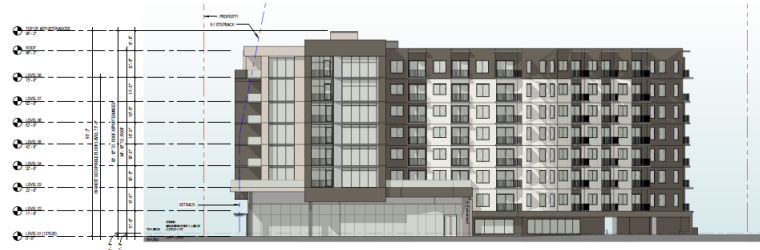
① OVERALL ELEVATION - NORTH ELEVATION
1/8" = 1'-0"



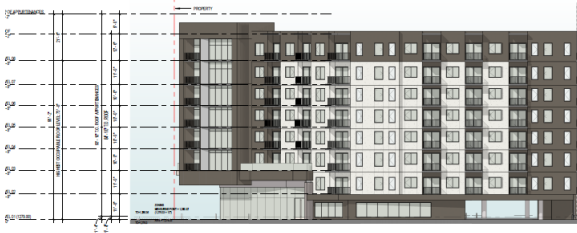
② OVERALL ELEVATION - WEST ELEVATION
1/8" = 1'-0"



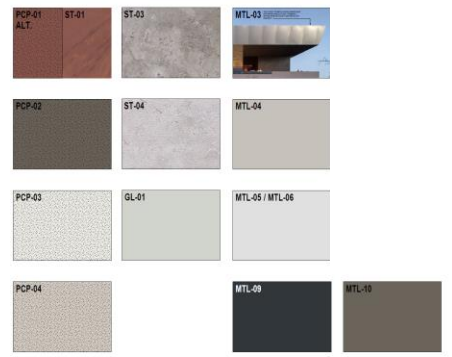
③ OVERALL ELEVATION - EAST ELEVATION
1/8" = 1'-0"



④ OVERALL ELEVATION - SOUTH ELEVATION
1/8" = 1'-0"



⑤ OVERALL ELEVATION - SOUTH EAST ELEVATION
1/8" = 1'-0"







NOTE: SS21 INDICATES DIRECT LINEAR GLOW FIXTURE LOCATIONS ON THE SANCTUARY FACADE. LIGHTING FIXTURE EFFECT AS SHOWN IN THE CONCEPT MADE NOTED AS OPTION 4.



NOTE: SS24 INDICATES VERTICAL LIGHTING ACCENT LOCATIONS ON METAL PANEL FACADE. LIGHTING FIXTURE EFFECT AS SHOWN IN THE CONCEPT MADE NOTED AS OPTION 1A.

GROUP	NOTE
(Pattern 1)	1) 3" x 6" BROWN BRICK
(Pattern 2)	2) 3" x 6" BROWN BRICK
(Pattern 3)	3) 3" x 6" BROWN BRICK
(Pattern 4)	4) 3" x 6" BROWN BRICK
(Pattern 5)	5) 3" x 6" BROWN BRICK
(Pattern 6)	6) 3" x 6" BROWN BRICK
(Pattern 7)	7) 3" x 6" BROWN BRICK
(Pattern 8)	8) 3" x 6" BROWN BRICK
(Pattern 9)	9) 3" x 6" BROWN BRICK
(Pattern 10)	10) 3" x 6" BROWN BRICK
(Pattern 11)	11) 3" x 6" BROWN BRICK
(Pattern 12)	12) 3" x 6" BROWN BRICK
(Pattern 13)	13) 3" x 6" BROWN BRICK
(Pattern 14)	14) 3" x 6" BROWN BRICK
(Pattern 15)	15) 3" x 6" BROWN BRICK
(Pattern 16)	16) 3" x 6" BROWN BRICK
(Pattern 17)	17) 3" x 6" BROWN BRICK
(Pattern 18)	18) 3" x 6" BROWN BRICK
(Pattern 19)	19) 3" x 6" BROWN BRICK
(Pattern 20)	20) 3" x 6" BROWN BRICK
(Pattern 21)	21) 3" x 6" BROWN BRICK
(Pattern 22)	22) 3" x 6" BROWN BRICK
(Pattern 23)	23) 3" x 6" BROWN BRICK
(Pattern 24)	24) 3" x 6" BROWN BRICK
(Pattern 25)	25) 3" x 6" BROWN BRICK
(Pattern 26)	26) 3" x 6" BROWN BRICK
(Pattern 27)	27) 3" x 6" BROWN BRICK
(Pattern 28)	28) 3" x 6" BROWN BRICK
(Pattern 29)	29) 3" x 6" BROWN BRICK
(Pattern 30)	30) 3" x 6" BROWN BRICK

GENERAL NOTES:
1) ALL MATERIALS SHALL BE SUPPLIED BY THE CONTRACTOR.
2) ALL MATERIALS SHALL BE MATCHED TO THE SAMPLES PROVIDED.
3) ALL MATERIALS SHALL BE MATCHED TO THE SAMPLES PROVIDED.

CALLISON|RTKL

4000 N. SCOTTSDALE ROAD
SCOTTSDALE, ARIZONA
480.444.1200

CAMELBACK
HAZEL
4805 N. SCOTTSDALE ROAD
SCOTTSDALE, ARIZONA
DOCUMENT ISSUE 01



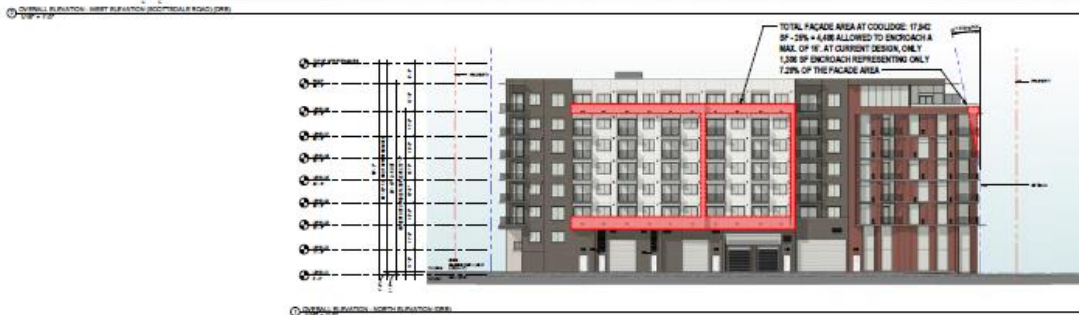
NO.	REVISION



EXTERIOR ELEVATIONS

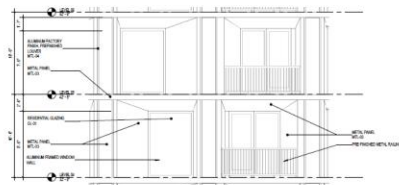
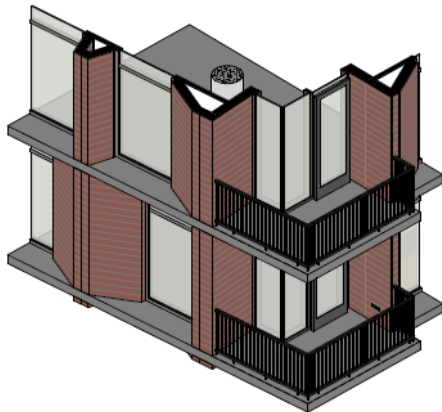
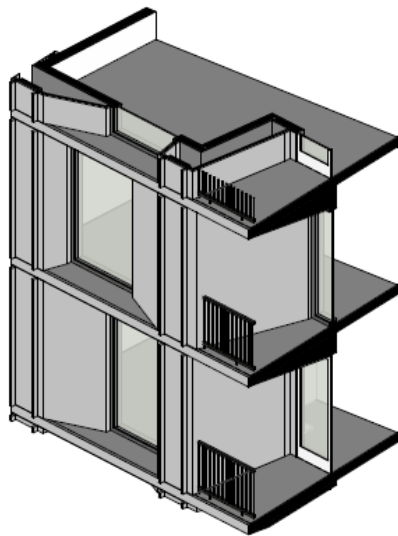
A-204.DRB

UNREGISTERED ARCHITECTURE

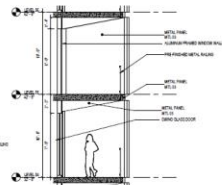


A-204.DRB

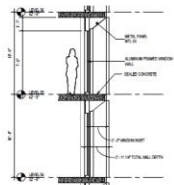
UNREGISTERED ARCHITECTURE



1 ENLARGED ELEVATION - WEST FACADE - METAL PANEL

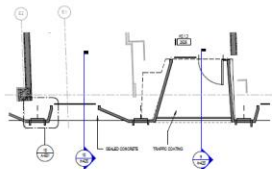


2 ENLARGED BALCONY SECTION - WEST FACADE - METAL PANEL



3 ENLARGED WINDOW WALL SECTION - WEST FACADE - METAL PANEL

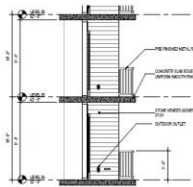
MATERIAL LEGEND	
001	GLASS PANEL
002	ALUMINUM WINDOW FRAME
003	GLASS PANEL
004	ALUMINUM WINDOW FRAME
005	ALUMINUM WINDOW FRAME
006	ALUMINUM WINDOW FRAME
007	ALUMINUM WINDOW FRAME
008	ALUMINUM WINDOW FRAME
009	ALUMINUM WINDOW FRAME
010	ALUMINUM WINDOW FRAME
011	ALUMINUM WINDOW FRAME
012	ALUMINUM WINDOW FRAME
013	ALUMINUM WINDOW FRAME
014	ALUMINUM WINDOW FRAME
015	ALUMINUM WINDOW FRAME
016	ALUMINUM WINDOW FRAME
017	ALUMINUM WINDOW FRAME
018	ALUMINUM WINDOW FRAME
019	ALUMINUM WINDOW FRAME
020	ALUMINUM WINDOW FRAME
021	ALUMINUM WINDOW FRAME
022	ALUMINUM WINDOW FRAME
023	ALUMINUM WINDOW FRAME
024	ALUMINUM WINDOW FRAME
025	ALUMINUM WINDOW FRAME
026	ALUMINUM WINDOW FRAME
027	ALUMINUM WINDOW FRAME
028	ALUMINUM WINDOW FRAME
029	ALUMINUM WINDOW FRAME
030	ALUMINUM WINDOW FRAME
031	ALUMINUM WINDOW FRAME
032	ALUMINUM WINDOW FRAME
033	ALUMINUM WINDOW FRAME
034	ALUMINUM WINDOW FRAME
035	ALUMINUM WINDOW FRAME
036	ALUMINUM WINDOW FRAME
037	ALUMINUM WINDOW FRAME
038	ALUMINUM WINDOW FRAME
039	ALUMINUM WINDOW FRAME
040	ALUMINUM WINDOW FRAME
041	ALUMINUM WINDOW FRAME
042	ALUMINUM WINDOW FRAME
043	ALUMINUM WINDOW FRAME
044	ALUMINUM WINDOW FRAME
045	ALUMINUM WINDOW FRAME
046	ALUMINUM WINDOW FRAME
047	ALUMINUM WINDOW FRAME
048	ALUMINUM WINDOW FRAME
049	ALUMINUM WINDOW FRAME
050	ALUMINUM WINDOW FRAME
051	ALUMINUM WINDOW FRAME
052	ALUMINUM WINDOW FRAME
053	ALUMINUM WINDOW FRAME
054	ALUMINUM WINDOW FRAME
055	ALUMINUM WINDOW FRAME
056	ALUMINUM WINDOW FRAME
057	ALUMINUM WINDOW FRAME
058	ALUMINUM WINDOW FRAME
059	ALUMINUM WINDOW FRAME
060	ALUMINUM WINDOW FRAME
061	ALUMINUM WINDOW FRAME
062	ALUMINUM WINDOW FRAME
063	ALUMINUM WINDOW FRAME
064	ALUMINUM WINDOW FRAME
065	ALUMINUM WINDOW FRAME
066	ALUMINUM WINDOW FRAME
067	ALUMINUM WINDOW FRAME
068	ALUMINUM WINDOW FRAME
069	ALUMINUM WINDOW FRAME
070	ALUMINUM WINDOW FRAME
071	ALUMINUM WINDOW FRAME
072	ALUMINUM WINDOW FRAME
073	ALUMINUM WINDOW FRAME
074	ALUMINUM WINDOW FRAME
075	ALUMINUM WINDOW FRAME
076	ALUMINUM WINDOW FRAME
077	ALUMINUM WINDOW FRAME
078	ALUMINUM WINDOW FRAME
079	ALUMINUM WINDOW FRAME
080	ALUMINUM WINDOW FRAME
081	ALUMINUM WINDOW FRAME
082	ALUMINUM WINDOW FRAME
083	ALUMINUM WINDOW FRAME
084	ALUMINUM WINDOW FRAME
085	ALUMINUM WINDOW FRAME
086	ALUMINUM WINDOW FRAME
087	ALUMINUM WINDOW FRAME
088	ALUMINUM WINDOW FRAME
089	ALUMINUM WINDOW FRAME
090	ALUMINUM WINDOW FRAME
091	ALUMINUM WINDOW FRAME
092	ALUMINUM WINDOW FRAME
093	ALUMINUM WINDOW FRAME
094	ALUMINUM WINDOW FRAME
095	ALUMINUM WINDOW FRAME
096	ALUMINUM WINDOW FRAME
097	ALUMINUM WINDOW FRAME
098	ALUMINUM WINDOW FRAME
099	ALUMINUM WINDOW FRAME
100	ALUMINUM WINDOW FRAME



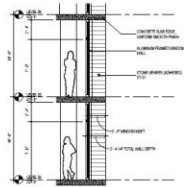
4 ENLARGED PLAN - TYPICAL METAL PANEL BALCONY



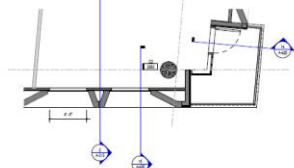
1 ENLARGED ELEVATION - WEST SANDSTONE



2 ENLARGED BALCONY SECTION - WEST SANDSTONE PANEL



3 ENLARGED WINDOW WALL SECTION - SANDSTONE PANEL



4 ENLARGED - TYP BALCONY - WEST - SANDSTONE

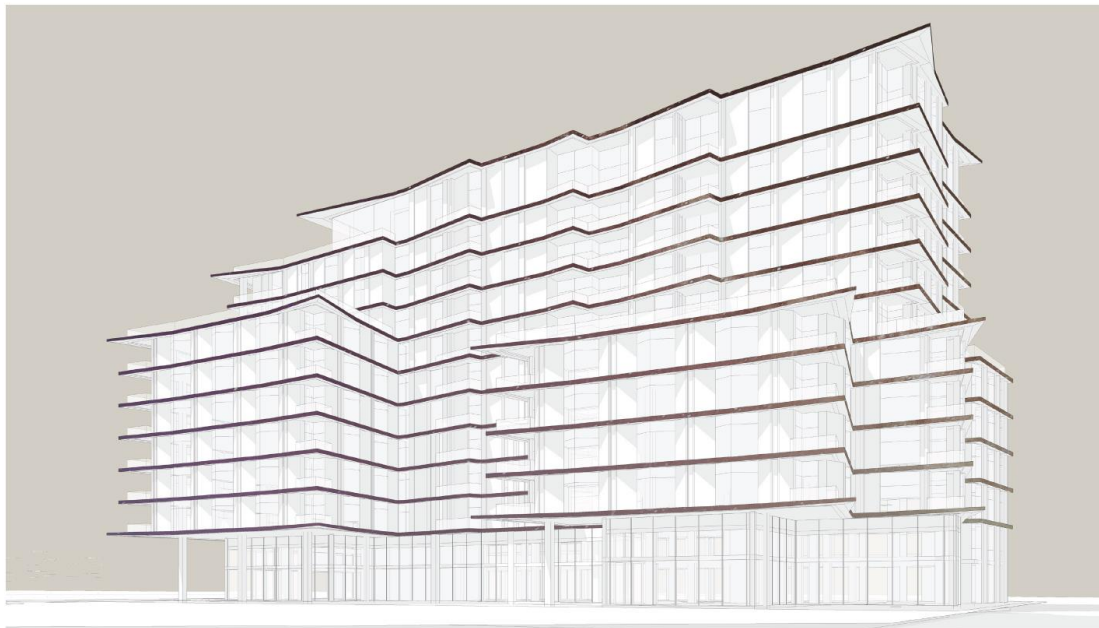




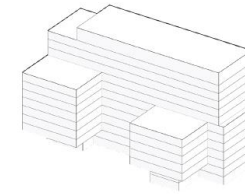


AZURE

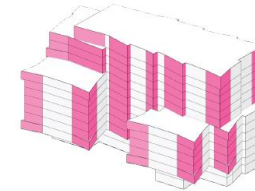




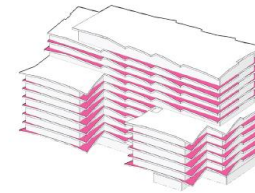
Building is envisioned as a series of strata, a topography of form that responds to scale and context.



Typical Building massing as a stack of plates.



Generating irregularity in the building massing creates better views for units.



Extended slab edges provide larger balcony spaces without diminishing unit square area. Furthermore, shading is improved from direct sun exposure.



The image of the architecture has a symbiotic relationship with Camelback Mountain, using scale and simple materials to capture the environment.



Sawtooth corrugated metal panel.

- Corrugation and finish layer to create a texture and rhythm to the facade.



Balcony and glass appear as integrated, holistic expression.







OPTION 5A



NOTE: \$205 INDICATES UPLIGHTING LOCATIONS ON THE FACADE. LIGHTING FIXTURE EFFECT AS SHOWN IN THE CONCEPT IMAGE.

MATERIAL LEGEND	
	GL-01 GLAZED IN PLACE CONCRETE
	GL-02 ARCHITECTURALLY EXPRESSED CONCRETE
	GL-03 GLAZED IN PLACE CONCRETE (SHOWN)
	GL-04 DIRECT APPLIED APPLIC
	GL-05 GREEN GLASS TYPICAL
	GL-06 IRONSTONE GLASS
	GL-07 IRONSTONE GLASS
	GL-08 IRONSTONE GLASS
	GL-09 IRONSTONE GLASS
	GL-10 IRONSTONE GLASS
	GL-11 IRONSTONE GLASS
	GL-12 IRONSTONE GLASS
	GL-13 IRONSTONE GLASS
	GL-14 IRONSTONE GLASS
	GL-15 IRONSTONE GLASS
	GL-16 IRONSTONE GLASS
	GL-17 IRONSTONE GLASS
	GL-18 IRONSTONE GLASS
	GL-19 IRONSTONE GLASS
	GL-20 IRONSTONE GLASS
	GL-21 IRONSTONE GLASS
	GL-22 IRONSTONE GLASS
	GL-23 IRONSTONE GLASS
	GL-24 IRONSTONE GLASS
	GL-25 IRONSTONE GLASS
	GL-26 IRONSTONE GLASS
	GL-27 IRONSTONE GLASS
	GL-28 IRONSTONE GLASS
	GL-29 IRONSTONE GLASS
	GL-30 IRONSTONE GLASS
	GL-31 IRONSTONE GLASS
	GL-32 IRONSTONE GLASS
	GL-33 IRONSTONE GLASS
	GL-34 IRONSTONE GLASS
	GL-35 IRONSTONE GLASS
	GL-36 IRONSTONE GLASS
	GL-37 IRONSTONE GLASS
	GL-38 IRONSTONE GLASS
	GL-39 IRONSTONE GLASS
	GL-40 IRONSTONE GLASS
	GL-41 IRONSTONE GLASS
	GL-42 IRONSTONE GLASS
	GL-43 IRONSTONE GLASS
	GL-44 IRONSTONE GLASS
	GL-45 IRONSTONE GLASS
	GL-46 IRONSTONE GLASS
	GL-47 IRONSTONE GLASS
	GL-48 IRONSTONE GLASS
	GL-49 IRONSTONE GLASS
	GL-50 IRONSTONE GLASS
	GL-51 IRONSTONE GLASS
	GL-52 IRONSTONE GLASS
	GL-53 IRONSTONE GLASS
	GL-54 IRONSTONE GLASS
	GL-55 IRONSTONE GLASS
	GL-56 IRONSTONE GLASS
	GL-57 IRONSTONE GLASS
	GL-58 IRONSTONE GLASS
	GL-59 IRONSTONE GLASS
	GL-60 IRONSTONE GLASS
	GL-61 IRONSTONE GLASS
	GL-62 IRONSTONE GLASS
	GL-63 IRONSTONE GLASS
	GL-64 IRONSTONE GLASS
	GL-65 IRONSTONE GLASS
	GL-66 IRONSTONE GLASS
	GL-67 IRONSTONE GLASS
	GL-68 IRONSTONE GLASS
	GL-69 IRONSTONE GLASS
	GL-70 IRONSTONE GLASS
	GL-71 IRONSTONE GLASS
	GL-72 IRONSTONE GLASS
	GL-73 IRONSTONE GLASS
	GL-74 IRONSTONE GLASS
	GL-75 IRONSTONE GLASS
	GL-76 IRONSTONE GLASS
	GL-77 IRONSTONE GLASS
	GL-78 IRONSTONE GLASS
	GL-79 IRONSTONE GLASS
	GL-80 IRONSTONE GLASS
	GL-81 IRONSTONE GLASS
	GL-82 IRONSTONE GLASS
	GL-83 IRONSTONE GLASS
	GL-84 IRONSTONE GLASS
	GL-85 IRONSTONE GLASS
	GL-86 IRONSTONE GLASS
	GL-87 IRONSTONE GLASS
	GL-88 IRONSTONE GLASS
	GL-89 IRONSTONE GLASS
	GL-90 IRONSTONE GLASS
	GL-91 IRONSTONE GLASS
	GL-92 IRONSTONE GLASS
	GL-93 IRONSTONE GLASS
	GL-94 IRONSTONE GLASS
	GL-95 IRONSTONE GLASS
	GL-96 IRONSTONE GLASS
	GL-97 IRONSTONE GLASS
	GL-98 IRONSTONE GLASS
	GL-99 IRONSTONE GLASS
	GL-100 IRONSTONE GLASS

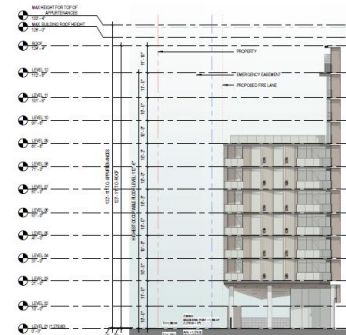
GENERAL NOTES
 1. FINISHES TO BE CONFIRMED WITH SUPPLIER.
 2. FINISHES TO BE MATCHED TO COLOR OF ADJACENT WALL FROM TOP TO BOTTOM TO MATCH COLOR OF ADJACENT WALL FROM BOTTOM TO TOP.



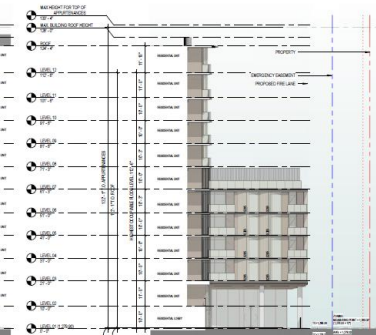
1 SOUTH WEST ELEVATION (DB) 1/16" = 1'-0"



2 NORTH WEST ELEVATION (DB) 1/16" = 1'-0"



3 COURTYARD SOUTH EAST ELEVATION (DB) 1/16" = 1'-0"



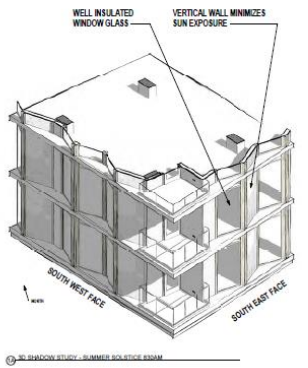
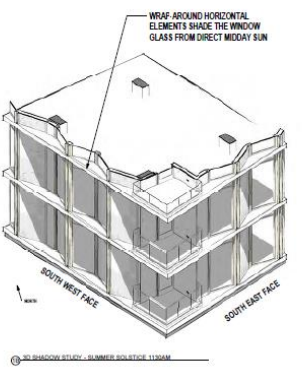
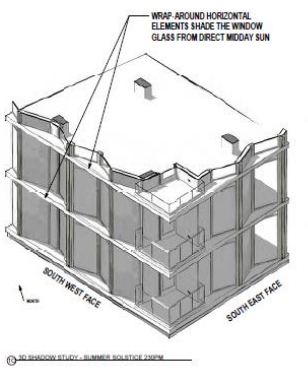
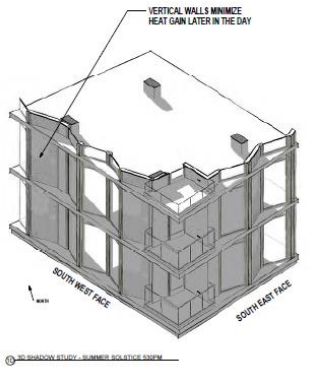
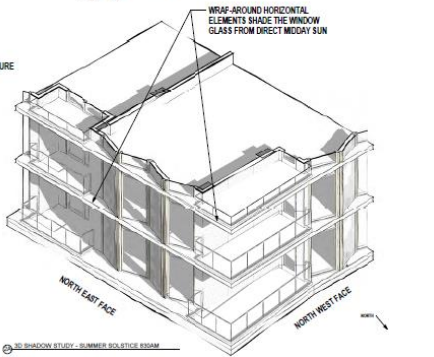
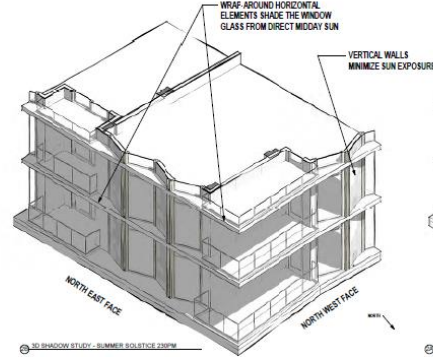
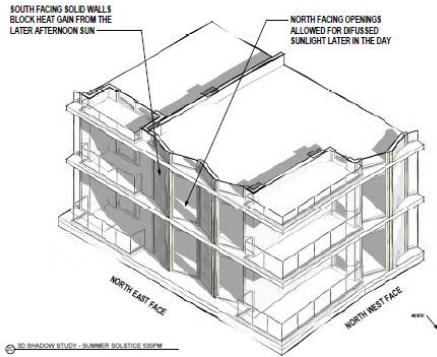
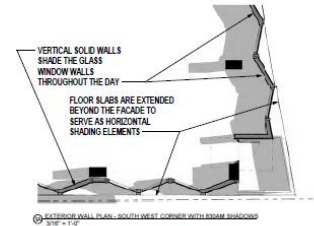
4 COURTYARD NORTH WEST ELEVATION (DB) 1/16" = 1'-0"



2 SOUTH EAST ELEVATION (DRB)
1/16" = 1'-0"



1 NORTH EAST ELEVATION (DRB)
1/16" = 1'-0"







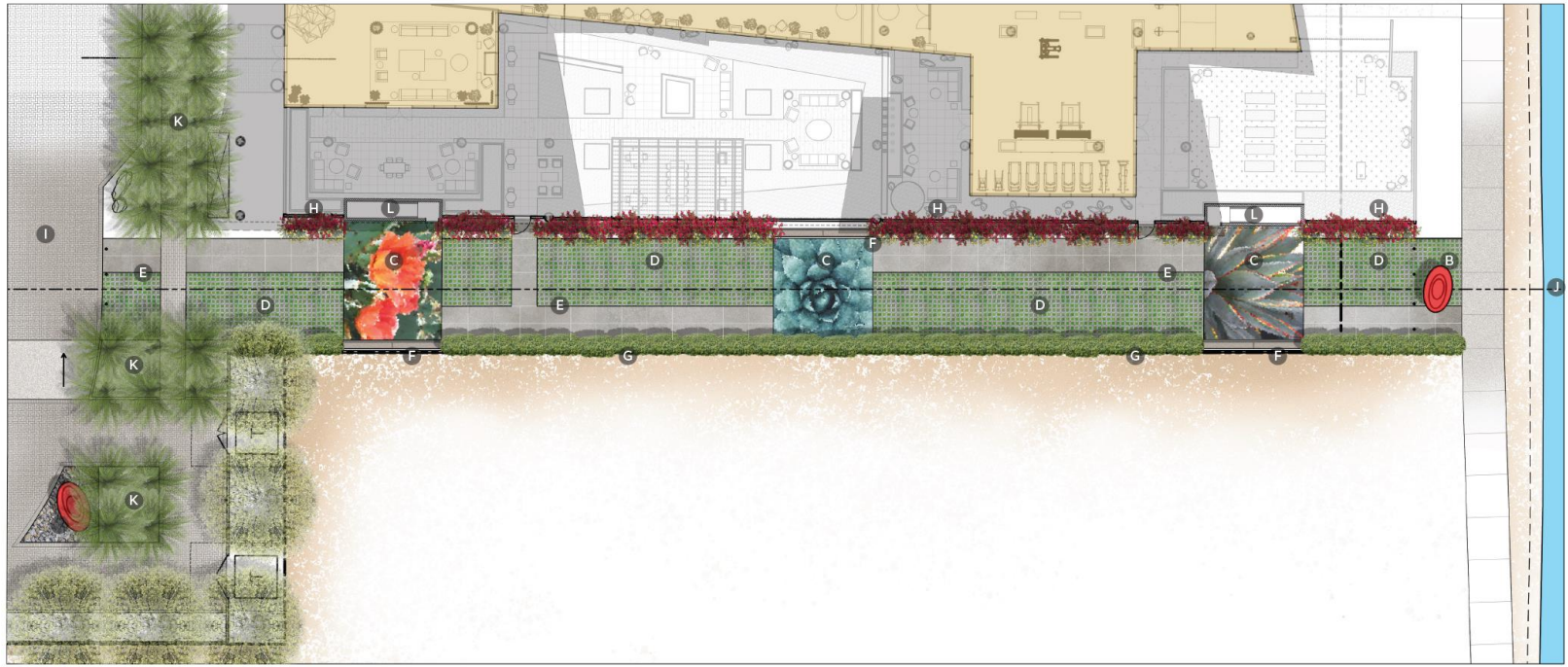






SAFARI LOFTS
GARAGE ENTRY

SQUARE
SQUARE



LEGEND

- | | |
|--|---|
| A PUBLIC SCULPTURE AT FASHION SQUARE DR ENTRY | G CONTINUOUS SCREEN HEDGE AT PROPERTY LINE |
| B PUBLIC SCULPTURE AT TERMINUS OF FIRE LANE | H BOUGAINVILLEA PLANTING IN FRONT OF BREEZE BLOCK WALL |
| C MOSAIC TILE ART FEATURES | I CONCRETE PAVERS AT FASHION SQUARE DRIVEWAY |
| D CELLULAR GRASS PAVING | J ARIZONA CANAL TRAIL |
| E CONCRETE W/ SANDBLAST FINISH | K DATE PALM ALLEE |
| F CAST CONCRETE BENCH | L GARAGE STAIRWELL W/ VERTICAL ART EXTENSION |







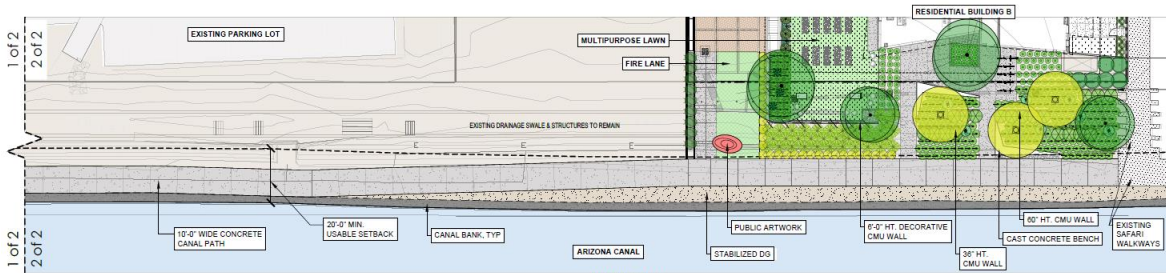
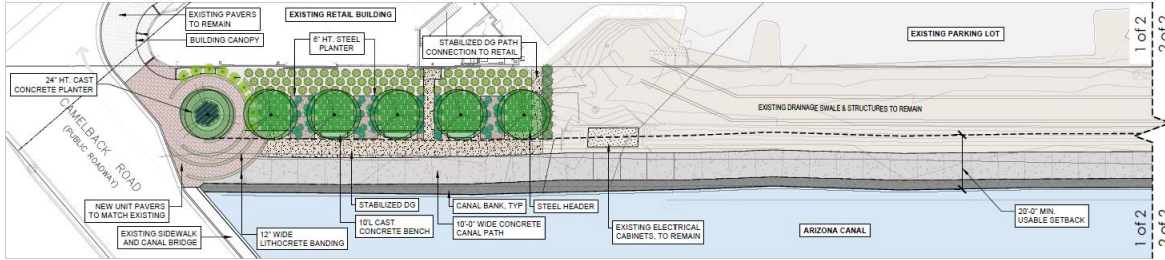
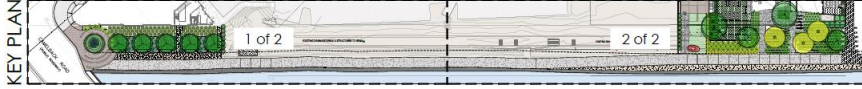
LEGEND

- A** SWIMMING POOL | 1,060 SF
- B** IN-POOL BENCH
- C** BOARDFORM CONCRETE PLANTER W/ AGAVE MASSING
- D** BATTERED INFINITY EDGE
- E** TIERED CONCRETE PLANTER AT BLDG. EDGE
- F** POOL FURNITURE, TYP.
- G** 42" HT. FRAMELESS GLASS GUARDRAIL
- H** FIRE FEATURE
- I** MULTI-STEM SPECIMEN TREE
- J** 24" X 24" CONCRETE PAVERS, LIGHT SANDBLAST
- K** 24" X 48" IPE TILES ON PEDESTAL
- L** CANTILEVERED IPE BENCH
- M** CURATED POTTERY
- N** CASCADING BOARDFORM CONCRETE PLANTERS
- O** CAST CONCRETE STEPS
- P** UPPER DECK ADA ACCESS

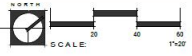




CANAL FRONTAGE



CANAL IMPROVEMENT PLAN



PLANT LEGEND

SYM.	BOTANICAL NAME COMMON NAME	SIZE	MIN. HT	CAL. W.	SYM.	BOTANICAL NAME COMMON NAME	SIZE	MIN. HT	CAL. W.
TREES									
48' BOX MULTI	PARQUONOMA Y DESERT MUSEUM DESERT MUSEUM PALM SPENS	14 1/2 X 10 W 4" CAL.	5		●	AGAVE BLUE PLAIN*	15 GAL.	3	
48' BOX MULTI	PROSOPIS CHILENSIS THORNLESS MESQUITE	14 H X 11 W 3.5" CAL.	9		●	ALOE SARRACENSIS	5 GAL.	80	
●	MULLENBERGIA DUBIA	5 GAL.	174		⚡	AGAVE SERRATUM	5 GAL.	44	
●	PINE MURLEY	5 GAL.	202		⚡	AGAVE SERRATUM	5 GAL.	19	
●	MULLENBERGIA CAPILLARIS REGAL MIST®	5 GAL.	202		⚡	AGAVE SERRATUM	5 GAL.	75	
●	REGAL MIST MURLEY	5 GAL.	174		⚡	AGAVE SERRATUM	5 GAL.	9	
●	RUELLIA BRITTONIANA (AMERICAN PETUNIA)	5 GAL.	19		⚡	AGAVE SERRATUM	5 GAL.	3	
●	RUELLIA SIMPLEX	5 GAL.	19		⚡	AGAVE SERRATUM	5 GAL.	50	
●	VALZUCA IRON CALIFORNICA	15 GAL.	16		⚡	AGAVE SERRATUM	5 GAL.	50	
●	ARIZONA ROSEWOOD	15 GAL.	16		⚡	AGAVE SERRATUM	5 GAL.	7	
GROUNDCOVER									
⚡	LANTANA X 'NEW GOLD' NEW GOLD LANTANA	5 GAL.	29		⚡	AGAVE SERRATUM	5 GAL.	12	
TOPDRESS / DUST CONTROL									
□	3/4\"/>								

FLOOR ASSOCIATES
 1425 N. First Street Second Floor Phoenix, AZ 85004
 602.452.1425 P 602.452.1427 F

OWNER **LOM LIVING**

ARCHITECT **CALLISORTKL**

CERTIFICATION

CAMELBACK
 4605 N SCOTTSDALE ROAD
 SCOTTSDALE, AZ 85251

PROJECT NO.	DATE
CL-101	08/2023
REVISION	
DESCRIPTION	

ISSUED FOR DESIGN REVIEW
 CANAL IMPROVEMENT PLAN
 CL-101

CITY PREPARED BY: ROBERT J. CALLIS, P.E.



Improvements
Installed...but
not to the level
of 18-DR-2007

Note: Safari Property
Backfilled to level
Grade with Canal

Safari Property



End of Safari Improvements

ZOM Property

Note: Safari Property Backfilled to level Grade with Canal

Safari Property

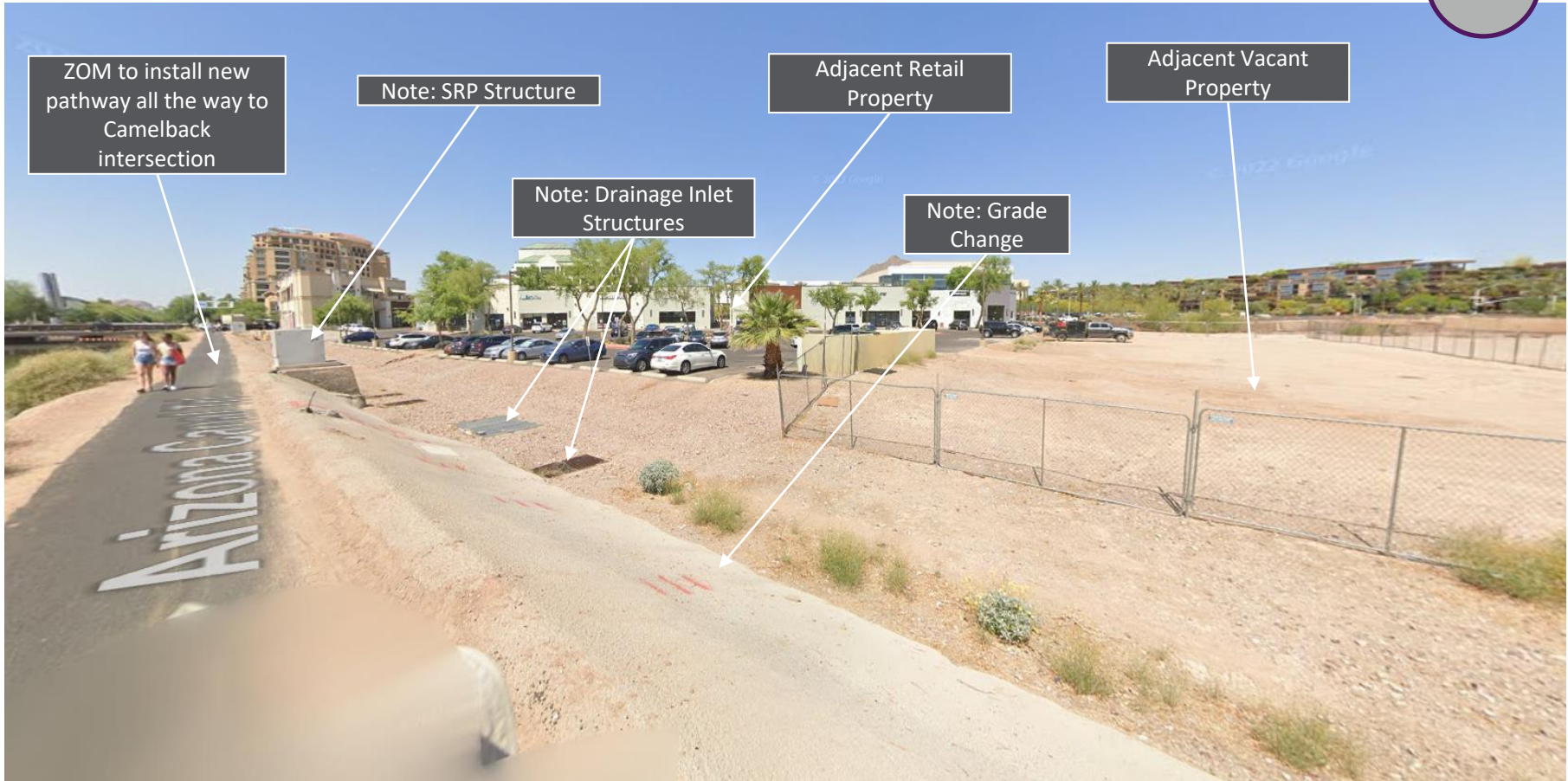


ZOM to install new pathway all the way to Camelback intersection

Note: Grade Change

Adjacent Vacant Property

ZOM Property





Area Beyond Drainage Infrastructure to be Improved

Note: SRP Structure

Note: Massive Box Culvert Junction Box

Retail Property

Note: Grade Change



Area Beyond Drainage Infrastructure to be Improved

SRP and Flood Control District Infrastructure

Note: Level Grade

THANK YOU!