

APPROVED
FINAL PLANS PLANNING

02/27/2020

DATE

APPROVED BY



Notes
1. THE BOTTOM OF THE SIGN SHALL BE 5 FEET ABOVE FINISHED GRADE.
2. SIGN SHALL BE CENTERED ON THE PARKING SPACE AND PLACED 2.5 FEET FROM FACE OF CURB. IN PARKING LOT SITUATIONS WITHOUT CURBING, SIGN MAY BE PLACED AT THE END OF THE STALL.
3. VAN ACCESSIBLE TAB TO BE USED, IF APPLICABLE.

KEYNOTE LEGEND

PROJECT NAME & LOCATION
Caesars Republic Scottsdale
4700 N Scottsdale Rd
Scottsdale, AZ 85251

DEVELOPER INFORMATION
Name, address & telephone number of Developer and / or Owner
Said property is developed by: **HCW**
153 South Payne Stewart Drive
Branson, Missouri 65616
417.332.3474
Attn: Richard E. Huffman – Manager
Key Contact: David Hess – 417.332.3412

DESIGN TEAM
Name, Address & Telephone number of all design team firms as well as registration numbers –
BRP Architects
319 N Main Ave, Suite 200
Springfield, MO 65806
Phone 417.865.6100
Lead Architect – Benjamin Van Eps
Registration Number: (Geoffrey Butler – 28748)

Olsson
7250 North 16th Street, Suite 210
Phoenix, AZ 85020
Phone 602.748.1000
Lead Engineer - Cardell Andrews
Registration Number: (Andrea Page - 42633)

Billform Landscape Architecture
11460 N. Cave Creek Rd, Suite 11
Phoenix, Arizona 85014
Phone 602.248.9200
Lead Architect – Dave Flynn
Registration Number: AZ#32379

ASSessor'S PARCEL NUMBER: 173.37.010

LEGAL DESCRIPTION:
Lot 2, a minor land division of Scottsdale Fashion Square amended, according to book 1201 of maps, page 8, records of Maricopa County, Arizona.

ALTA SURVEY: See attached

SITE ACRES:
GROSS LOT AREA 7.04 ACRES/ 306,703 SF
NET DEVELOPABLE AREA 4.24 ACRES/ 183,896 SF

HOTEL AREA SUMMARY
FIRST FLOOR 41,863 SF
SECOND FLOOR 28,109 SF
TYPICAL TOWER 63,732 SF (20,438 x 4 LEVELS)
SEVENTH FLOOR 12,445 SF
EIGHTH FLOOR 16,071 SF
NINTH FLOOR 16,071 SF
TENTH FLOOR 15,837 SF
ELEVENTH FLOOR 15,837 SF
TOTAL 246,033 SF
NUMBER OF FLOORS 11 FLOORS

OVERALL BUILDING HEIGHT: 146'-0"
TOP OF PARAPET 146'-0"
HIGHEST OCCUPIED FLOOR 132'-0"

NUMBER OF GUEST UNITS 265 GUEST UNITS (INCLUDING 10 ADA UNITS)

SECOND FLOOR: 28 UNITS
THIRD FLOOR: 42 UNITS (INCLUDING 2 ADA UNITS)
FOURTH FLOOR: 42 UNITS (INCLUDING 1 ADA UNITS)
FIFTH FLOOR: 42 UNITS (INCLUDING 1 ADA UNITS)
SIXTH FLOOR: 42 UNITS (INCLUDING 2 ADA UNITS)
SEVENTH FLOOR: 7 UNITS (INCLUDING 2 ADA UNITS)
EIGHTH FLOOR: 21 UNITS
NINTH FLOOR: 18 UNITS (INCLUDING 2 ADA UNITS)
TENTH FLOOR: 18 UNITS (INCLUDING 1 ADA UNITS)
ELEVENTH FLOOR: 5 UNITS

265 TOTAL UNITS (INCLUDES 10 ADA AND 17 HEARING IMPAIRED UNITS).
*SEE ROOM MATING SCHEDULE FOR ADA AND HEARING IMPAIRED UNIT LOCATIONS.
COORDINATE ROLL IN SHOWER LOCATION WITH MATRIX AND STRUCTURAL DRAWINGS. **

PARKING REQUIREMENTS:
CROSS PARKING IS PROVIDED WITHIN THE REGIONAL SHOPPING CENTER TO SATISFY OFF STREET PARKING. PLEASE SEE PARKING PLAN EXHIBIT FOR BREAKDOWN.

- All site improvements, including landscape and site cleanup, must be completed prior to Certificate of Occupancy for any building within a phase.
- All roof mounted mechanical equipment shall be fully screened by parapet walls equal to, or greater than, the highest point on the mechanical equipment.
- Solid masonry walls and gates equal to, or greater than, the highest point on the mechanical equipment shall screen all ground mounted mechanical equipment.
- All external lighting shall be located and designed to prevent rays from being directed off of the property upon which the lighting is located.
- The Fire Department Double Check assembly shall be painted to match the adjacent wall color.
- Signs require separate permit.
- There shall be no obstruction of site signage by landscape plant material, and that such must be relocated/connected before the field inspection will accept the sign in the field or issue a Certificate of Occupancy for a project.
- All transformer boxes, meter panels and electrical equipment, backflow devices or any other utility equipment not able or required to be screened by landscaping or walls, shall be painted to match the building color.
- All walls over 7' in height, site lighting, signage, ramadas and shade structure require separate submittal and permits.

REVISIONS					
1	ADDENDUM 01	8/16/2019	9	ADDENDUM 09	11/18/2019
2	ADDENDUM 02	8/30/2019	10	CITY RESPONSE	12/18/2019
3	ADDENDUM 03	8/30/2019	11	CITY RESPONSE 2	1/28/2020
			12	CITY RESPONSE 2	1/28/2020

ARCHITECTURAL SITE PLAN

CAESARS REPUBLIC SCOTTSDALE

FASHION SQUARE - SCOTTSDALE, ARIZONA

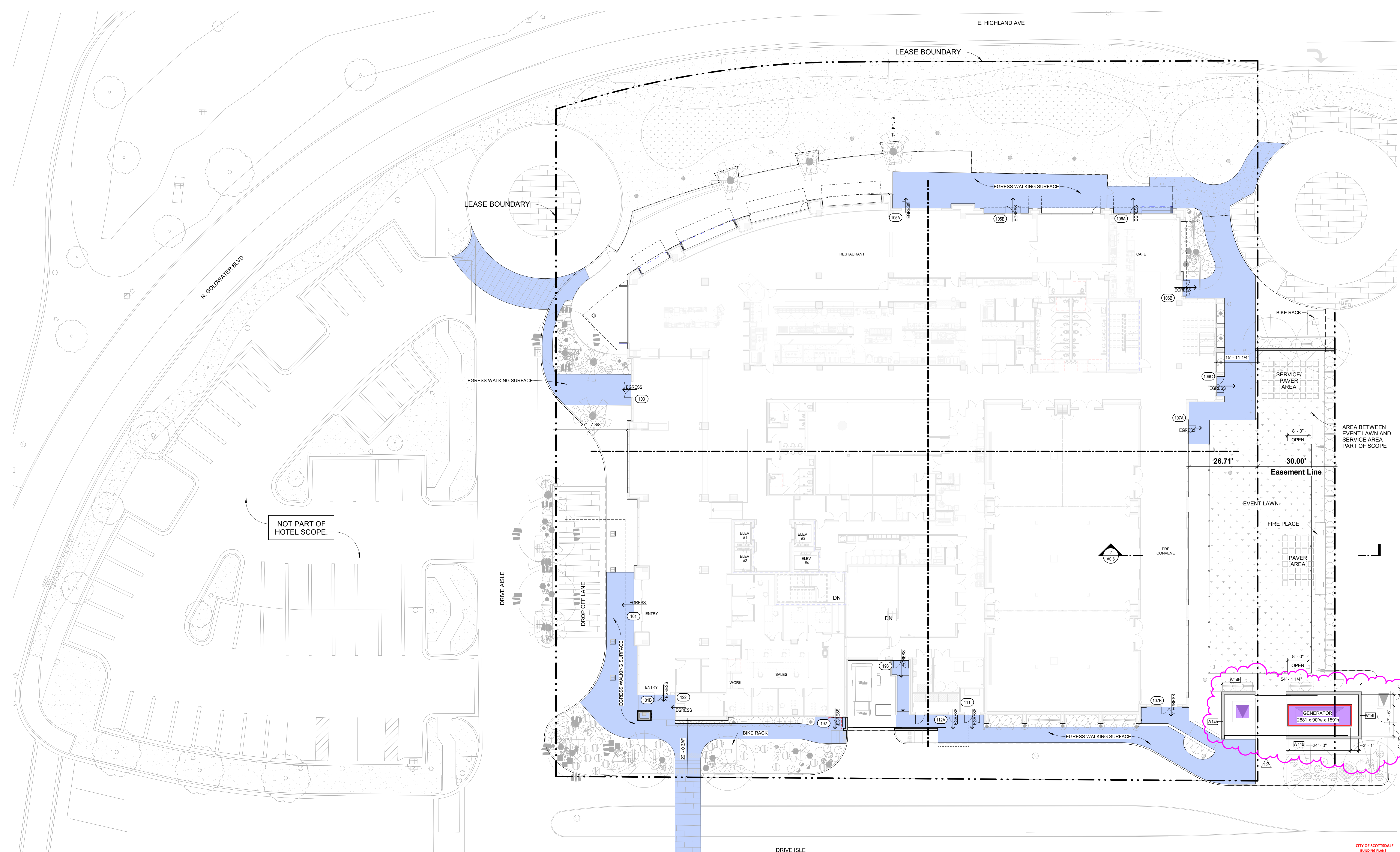
BUTLER, ROSENBERG & PARTNERS, INC.
319 N MAIN ST. SUITE 200, SPRINGFIELD, MISSOURI, 65806 T: 417-865-6100
STATE OF MISSOURI LICENSE NO. ARCH. 004834384

DRAWN BY SA, ME, JSN, GM	ISSUE DATE JULY 25, 2019
CHECKED BY BJV, GM	PROJECT 18841.CV5A.5

20748
2019
OFFICE OF ARCHITECTURE
ARIZONA
A1.0

JANUARY 28, 2020
Exp. 03.31.2022
GEOFFREY H. BUTLER
ARIZONA ARCHITECTURAL LICENSE NUMBER: 28748

BM 360.11841 - CIVSA CAESARS REPUBLICA_ARCH_CVSA_2019.rvt 1/30/2020 11:28:17 AM



NOT PART OF HOTEL SCOPE.

APPROVED
FINAL PLANS PLANNING

02/27/2020

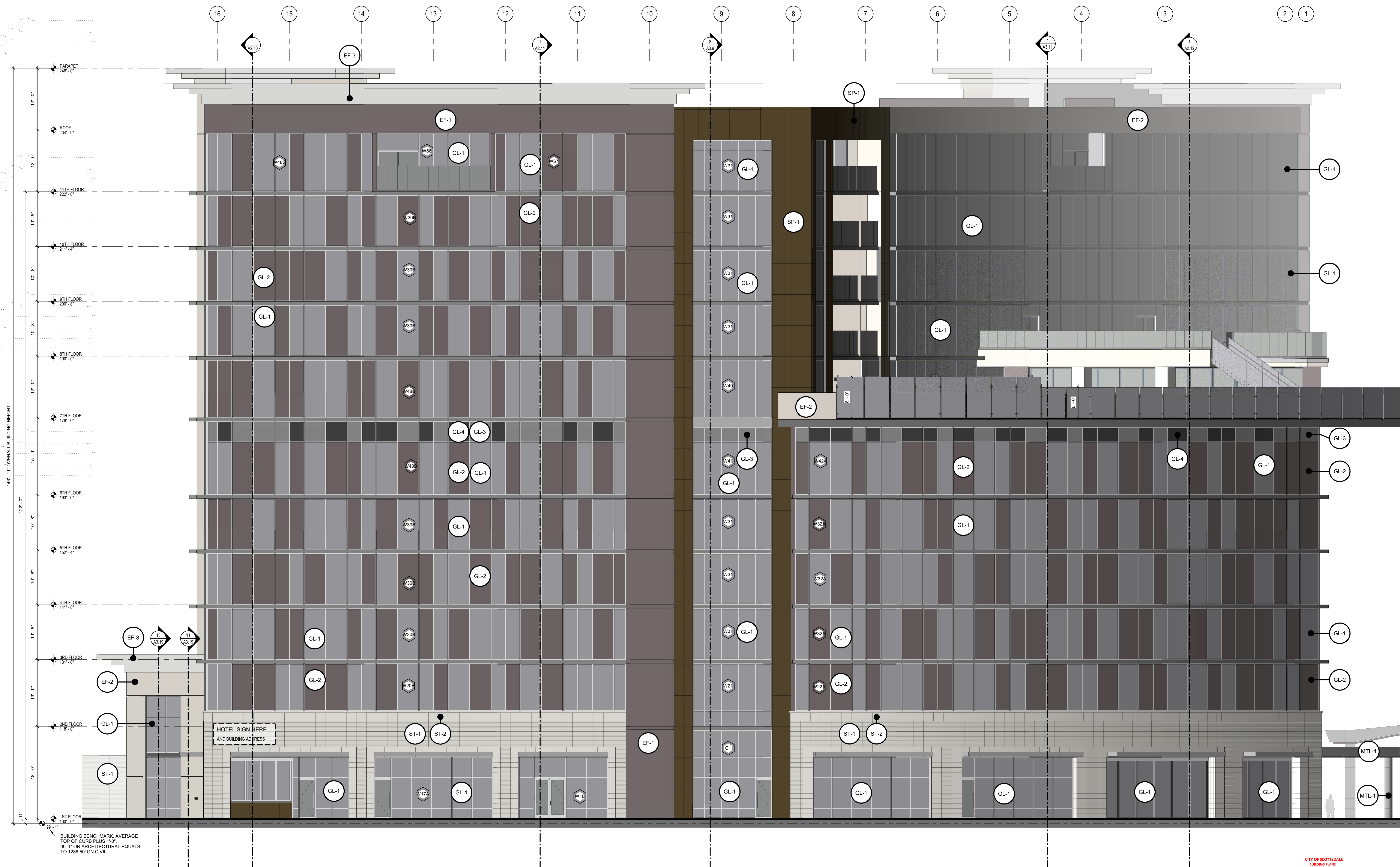
DATE

APPROVED BY

KEYNOTE LEGEND

EXTERIOR FINISH MATERIAL LEGEND

TYPE	MATERIAL	COLOR	GRAPHIC
EF-1	EFS	MANUFACTURER: DRYVIT FINISH COLOR: 617ST WINTERS EYE	[Graphic]
EF-2	EFS	MANUFACTURER: DRYVIT FINISH COLOR: 194ST DOVER SKY	[Graphic]
EF-3	EFS	MANUFACTURER: DRYVIT FINISH COLOR: 472ST CAPTAIN	[Graphic]
SP-1	ACCENT PANEL	MANUFACTURER: TRESPA METEON FINISH COLOR: LIMBI ROMAN BRONZE	[Graphic]
SP-2	STONE PANEL	MANUFACTURER: STONE PANELS INT. LLC FINISH COLOR: WHITE CARRARA MARBLE	[Graphic]
ST-1	MASONRY STONE VENEER	MANUFACTURER: SOLSTICE STONE FINISH COLOR: BARCELONA BEIGE WIDE COMBED	[Graphic]
ST-2	MASONRY STONE VENEER	MANUFACTURER: SOLSTICE STONE FINISH COLOR: GLACIER HONED	[Graphic]
WD-1	WOOD PLANK	MANUFACTURER: 1X WOOD PLANKS FINISH COLOR: DARK BROWN STAIN	[Graphic]
MTL-1	ALUMINUM WRAP	MANUFACTURER: REYNOLBOND FINISH COLOR: MICA PLATINUM	[Graphic]



GLAZING FINISH MATERIAL LEGEND

GLAZING	MANUFACTURER: PPG FINISH COLOR: SOLARGRAY SOLARBAN 60	GRAPHIC
GL-1	MANUFACTURER: PPG FINISH COLOR: SOLARGRAY SOLARBAN 60	[Graphic]
GL-2	MANUFACTURER: PPG FINISH COLOR: GRAYLITE II	[Graphic]
GL-3	MANUFACTURER: PPG FINISH COLOR: SOLARGRAY SOLARBAN 60	[Graphic]
GL-4	MANUFACTURER: PPG FINISH COLOR: GRAYLITE II	[Graphic]

REVISIONS			
2	ADDENDUM 02	8/23/2019	
8	ADDENDUM 08	10/10/2019	
9	ADDENDUM 09	11/15/2019	
11	CITY RESPONSE	12/18/2019	

NORTH ELEVATION

CAESARS REPUBLIC SCOTTSDALE

FASHION SQUARE - SCOTTSDALE, ARIZONA

BUTLER, ROSENBERY & PARTNERS, INC.

319 N MAIN ST. SUITE 200, SPRINGFIELD, MISSOURI, 65806 T: 417-865-6100

STATE OF ARIZONA, CERTIFICATE OF ARCHITECTURE, LICENSE NO. 28748



DRAWN BY SA, ME, JSN, GM
ISSUE DATE JULY 25, 2019
CHECKED BY BJV, GM
PROJECT 18041.CWSA.S

APPROVED ARCHITECT
20748
GEOFFREY H. BUTLER
ARCHITECT
ARIZONA U.S.
JANUARY 28, 2020
Exp. 03.31.2022
GEOFFREY H. BUTLER
ARIZONA ARCHITECTURAL LICENSE NUMBER: 28748

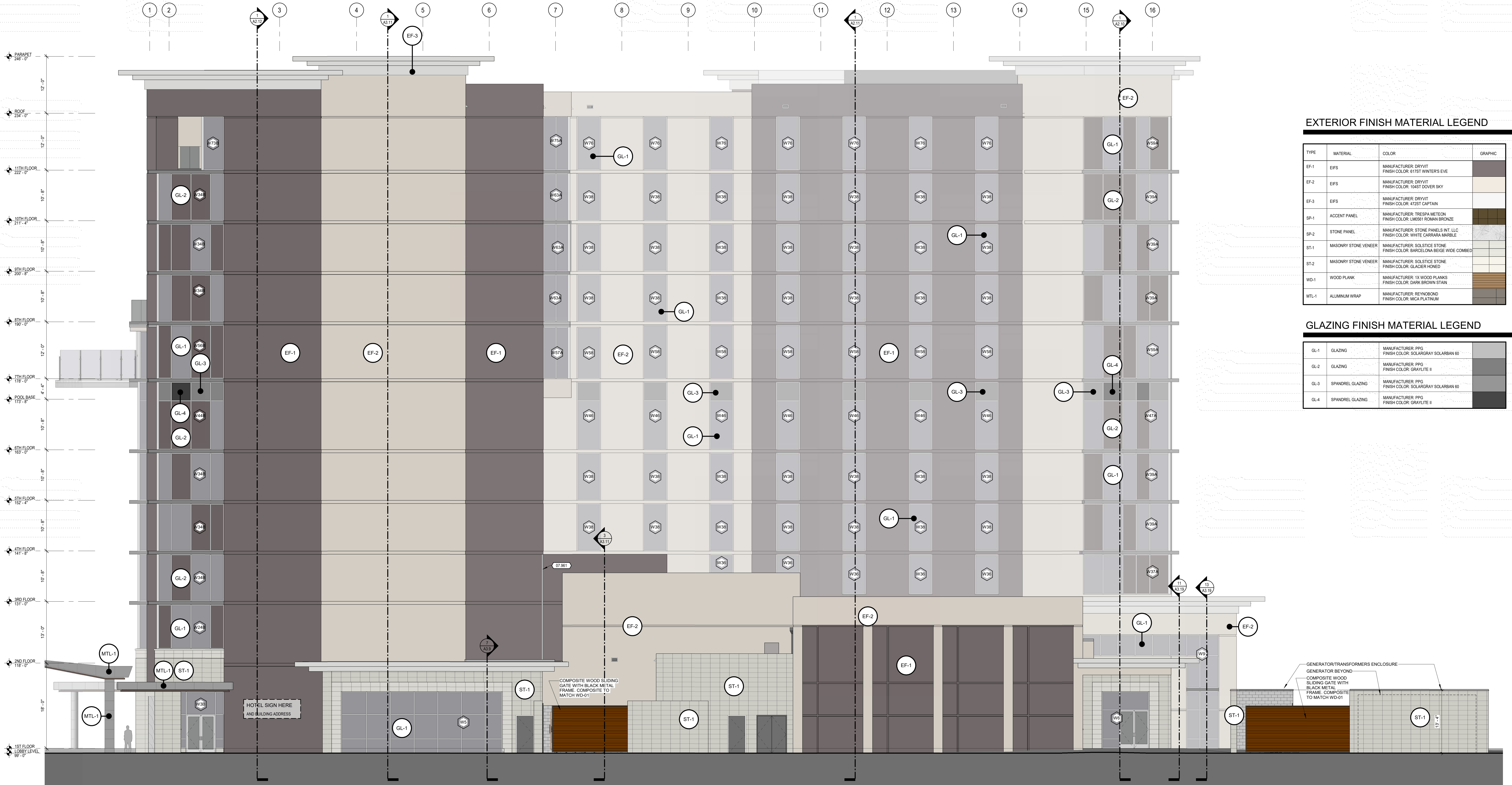
A2.1

1 NORTH ELEVATION
1/8" = 1'-0"

CITY OF SCOTTSDALE
BUILDING PLANS
THIS PLAN HAS BEEN APPROVED
AND THE PROJECT HAS BEEN
RECORDED IN THE CITY OF SCOTTSDALE
OFFICE OF RECORDS

KEYNOTE LEGEND

07.961 EXTERIOR WALL TO WALL EXPANSION JOINT ASSEMBLY



EXTERIOR FINISH MATERIAL LEGEND

TYPE	MATERIAL	COLOR	GRAPHIC
EF-1	EIPS	MANUFACTURER: DRYVIT FINISH COLOR: 61731 WINTER'S EVE	[Color swatch]
EF-2	EIPS	MANUFACTURER: DRYVIT FINISH COLOR: 19437 DOVER SKY	[Color swatch]
EF-3	EIPS	MANUFACTURER: DRYVIT FINISH COLOR: 47237 CAPTAIN	[Color swatch]
SP-1	ACCENT PANEL	MANUFACTURER: TRESPA METEON FINISH COLOR: LM261 ROMAN BRONZE	[Color swatch]
SP-2	STONE PANEL	MANUFACTURER: STONE PANELS INT. LLC FINISH COLOR: WHITE CARRARA MARBLE	[Color swatch]
ST-1	MASONRY STONE VENEER	MANUFACTURER: SOLISTICE STONE FINISH COLOR: BARCELONA BEIGE WIDE COMBED	[Color swatch]
ST-2	MASONRY STONE VENEER	MANUFACTURER: SOLISTICE STONE FINISH COLOR: GLACIER HONED	[Color swatch]
WD-1	WOOD PLANK	MANUFACTURER: 1X WOOD PLANKS FINISH COLOR: DARK BROWN STAIN	[Color swatch]
MTL-1	ALUMINUM WRAP	MANUFACTURER: REYNOLDBOND FINISH COLOR: MGA PLATINUM	[Color swatch]

GLAZING FINISH MATERIAL LEGEND

GLAZING	MANUFACTURER	COLOR	GRAPHIC
GL-1	PPG	SOLARGRAY SOLARBAN 60	[Color swatch]
GL-2	PPG	GRAYLITE II	[Color swatch]
GL-3	PPG	SOLARGRAY SOLARBAN 60	[Color swatch]
GL-4	PPG	GRAYLITE II	[Color swatch]

1 SOUTH ELEVATION
1/8" = 1'-0"

REVISIONS

1	ADDENDUM 01	8/16/2019	9	ADDENDUM 09	11/15/2019
2	ADDENDUM 02	8/23/2019	11	CITY RESPONSE	12/18/2019
3	ADDENDUM 03	8/30/2019			

APPROVED
FINAL PLANS PLANNING
02/27/2020
DATE APPROVED BY

SOUTH ELEVATION
CAESARS REPUBLIC SCOTTSDALE
FASHION SQUARE - SCOTTSDALE, ARIZONA

BUTLER, ROSENBERY & PARTNERS, INC.
319 N MAIN ST. SUITE 200, SPRINGFIELD, MISSOURI, 65806 T: 417-865-6100
STATE OF ARIZONA CERTIFICATE OF ARCHITECTURE # 18841-CVSA-S

20748
GEOFFREY H. BUTLER
ARCHITECT
ARIZONA U.S.

JANUARY 28, 2020
Exp. 03.31.2022
GEOFFREY H. BUTLER
ARIZONA ARCHITECTURAL LICENSE NUMBER: 28748

A2.3

CITY OF SCOTTSDALE
BUILDING PLANS
THIS PLAN HAS BEEN APPROVED
THIS DOES NOT AUTHORIZE VARIATION OF ANY
CASE OR VIOLATION

KEYNOTE LEGEND

07.961 EXTERIOR WALL TO WALL EXPANSION JOINT ASSEMBLY

EXTERIOR FINISH MATERIAL LEGEND

TYPE	MATERIAL	COLOR	GRAPHIC
EF-1	EIFS	MANUFACTURER: DRYVIT FINISH COLOR: 6757 WINTERS EVE	
EF-2	EIFS	MANUFACTURER: DRYVIT FINISH COLOR: 1045T DOVER SKY	
EF-3	EIFS	MANUFACTURER: DRYVIT FINISH COLOR: 4725T CAPTAIN	
SP-1	ACCENT PANEL	MANUFACTURER: TRESPA METEON FINISH COLOR: LM561 ROMAN BRONZE	
SP-2	STONE PANEL	MANUFACTURER: STONE PANELS INT. LLC FINISH COLOR: WHITE CARRARA MARBLE	
ST-1	MASONRY STONE VENEER	MANUFACTURER: SOLISTICE STONE FINISH COLOR: BARCELONA BEIGE WIDE COMBED	
ST-2	MASONRY STONE VENEER	MANUFACTURER: SOLISTICE STONE FINISH COLOR: GLACIER HONO	
WD-1	WOOD PLANK	MANUFACTURER: 1X WOOD PLANKS FINISH COLOR: DARK BROWN STAIN	
MTL-1	ALUMINUM WRAP	MANUFACTURER: REYNOLBOND FINISH COLOR: MCA PLATINUM	

GLAZING FINISH MATERIAL LEGEND

GLAZING	MATERIAL	COLOR	GRAPHIC
GL-1	GLAZING	MANUFACTURER: PPG FINISH COLOR: SOLARGRAY SOLARBAN 60	
GL-2	GLAZING	MANUFACTURER: PPG FINISH COLOR: GRAYLITE II	
GL-3	SPANDREL GLAZING	MANUFACTURER: PPG FINISH COLOR: SOLARGRAY SOLARBAN 60	
GL-4	SPANDREL GLAZING	MANUFACTURER: PPG FINISH COLOR: GRAYLITE II	

REVISIONS

1	ADDENDUM 01	8/16/2019	9	ADDENDUM 09	11/15/2019
2	ADDENDUM 02	8/23/2019	11	CITY RESPONSE	12/18/2019

EAST ELEVATION

CAESARS REPUBLIC SCOTTSDALE

FASHION SQUARE - SCOTTSDALE, ARIZONA

BUTLER, ROSENBERG & PARTNERS, INC.

319 N MAIN ST. SUITE 200, SPRINGFIELD, MISSOURI, 65806 T: 417-865-6100

STATE OF ARIZONA CERTIFICATE OF ARCHITECTURE LICENSE NO. 287748



DRAWN BY SA, ME, JSN, GM
ISSUE DATE JULY 25, 2019
CHECKED BY BJV, GM
PROJECT 18041.CVSAS

JANUARY 28, 2020
Exp. 03.31.2022

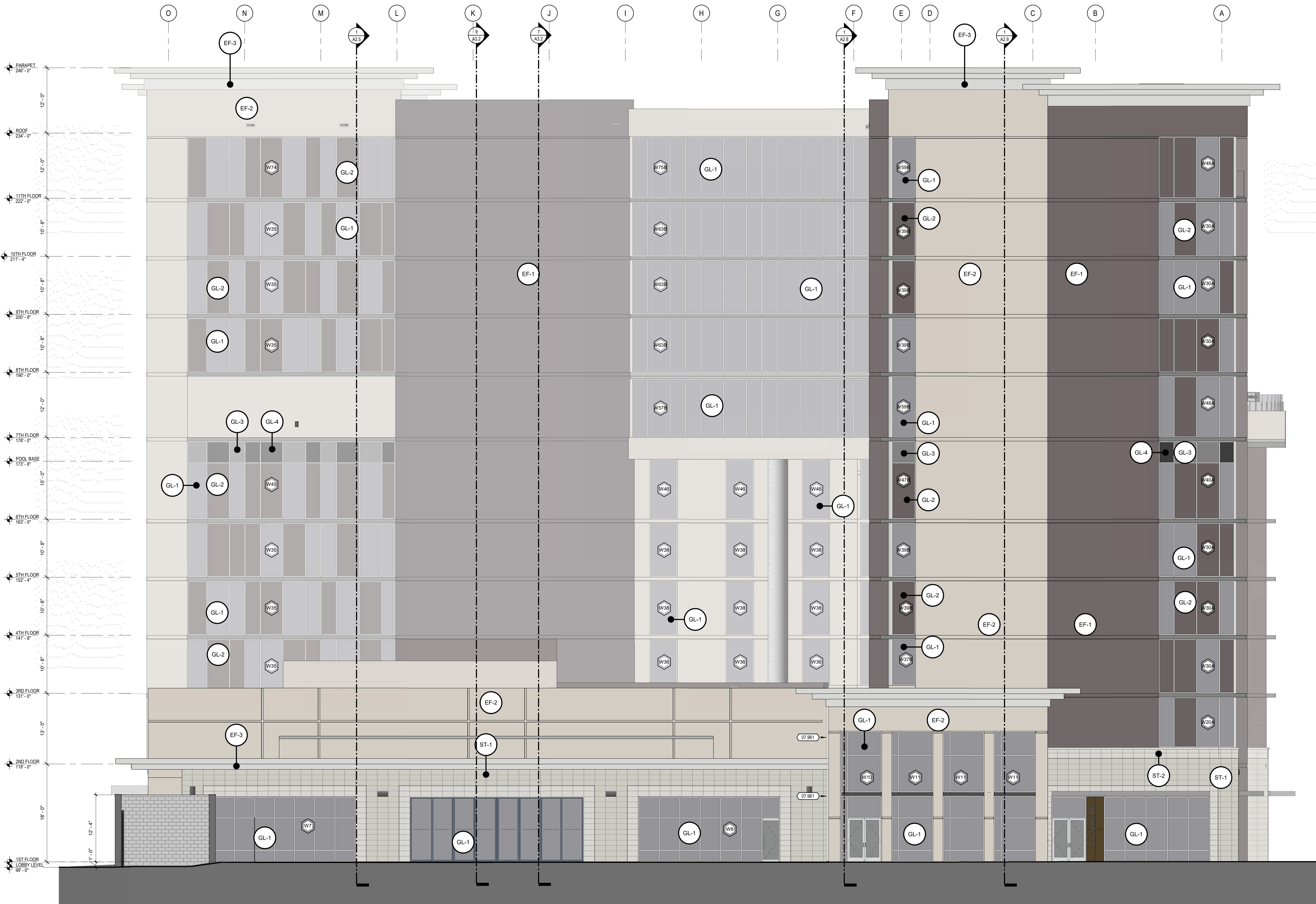
ARIZONA ARCHITECTURAL LICENSE NUMBER: 287748

A2.2

BM 360.11841 - CVSAS CAESARS REPUBLICA_ARCH_CVSA_2019.rvt

1/30/2020 11:41:25 AM

APPROVED
FINAL PLANS PLANNING
02/27/2020
DATE APPROVED BY



1 EAST ELEVATION
3/8" = 1'-0"

CITY OF SCOTTSDALE
BUILDING PLANS
THIS PLAN SHALL BE APPROVED
AND SHALL BE IN ACCORDANCE
WITH THE CITY OF SCOTTSDALE
THIS DOES NOT AUTHORIZE INCLUSION OF ANY
CODE OR ORDINANCE

APPROVED
FINAL PLANS PLANNING
 02/27/2020
 DATE APPROVED BY

KEYNOTE LEGEND

EXTERIOR FINISH MATERIAL LEGEND

TYPE	MATERIAL	COLOR	GRAPHIC
EF-1	EIFS	MANUFACTURER: DRYVIT FINISH COLOR: 615T WINTER'S EYE	
EF-2	EIFS	MANUFACTURER: DRYVIT FINISH COLOR: 164ST DOVER SKY	
EF-3	EIFS	MANUFACTURER: DRYVIT FINISH COLOR: 422ST CAPTAIN	
SP-1	ACCENT PANEL	MANUFACTURER: TRESSA METEON FINISH COLOR: 1465H ROMAN BRONZE	
SP-2	STONE PANEL	MANUFACTURER: SOLISTICE STONE FINISH COLOR: WHITE CARRARA MARBLE	
ST-1	MASONRY STONE VENEER	MANUFACTURER: SOLISTICE STONE FINISH COLOR: BARCELONA BEIGE WIDE COMBED	
ST-2	MASONRY STONE VENEER	MANUFACTURER: SOLISTICE STONE FINISH COLOR: GLACIER HONED	
WD-1	WOOD PLANK	MANUFACTURER: 1X WOOD PLANKS FINISH COLOR: DARK BROWN STAIN	
MTL-1	ALUMINUM WRAP	MANUFACTURER: REYNOLDBOND FINISH COLOR: MCA PLATINUM	

GLAZING FINISH MATERIAL LEGEND

GLAZING	MANUFACTURER	FINISH COLOR	GRAPHIC
GL-1	PPG	SOLARGRAY SOLARBAN 60	
GL-2	PPG	GRAYLITE II	
GL-3	PPG	SOLARGRAY SOLARBAN 60	
GL-4	PPG	GRAYLITE II	

REVISIONS

NO.	DESCRIPTION	DATE	BY
1	ADDENDUM 01	8/16/2019	11 CITY RESPONSE
2	ADDENDUM 02	8/23/2019	

WEST ELEVATION

CAESARS REPUBLIC SCOTTSDALE
 FASHION SQUARE - SCOTTSDALE, ARIZONA

BUTLER, ROSENBERG & PARTNERS, INC.
 319 N MAIN ST. SUITE 200, SPRINGFIELD, MISSOURI, 65806 T. 417-865-6100

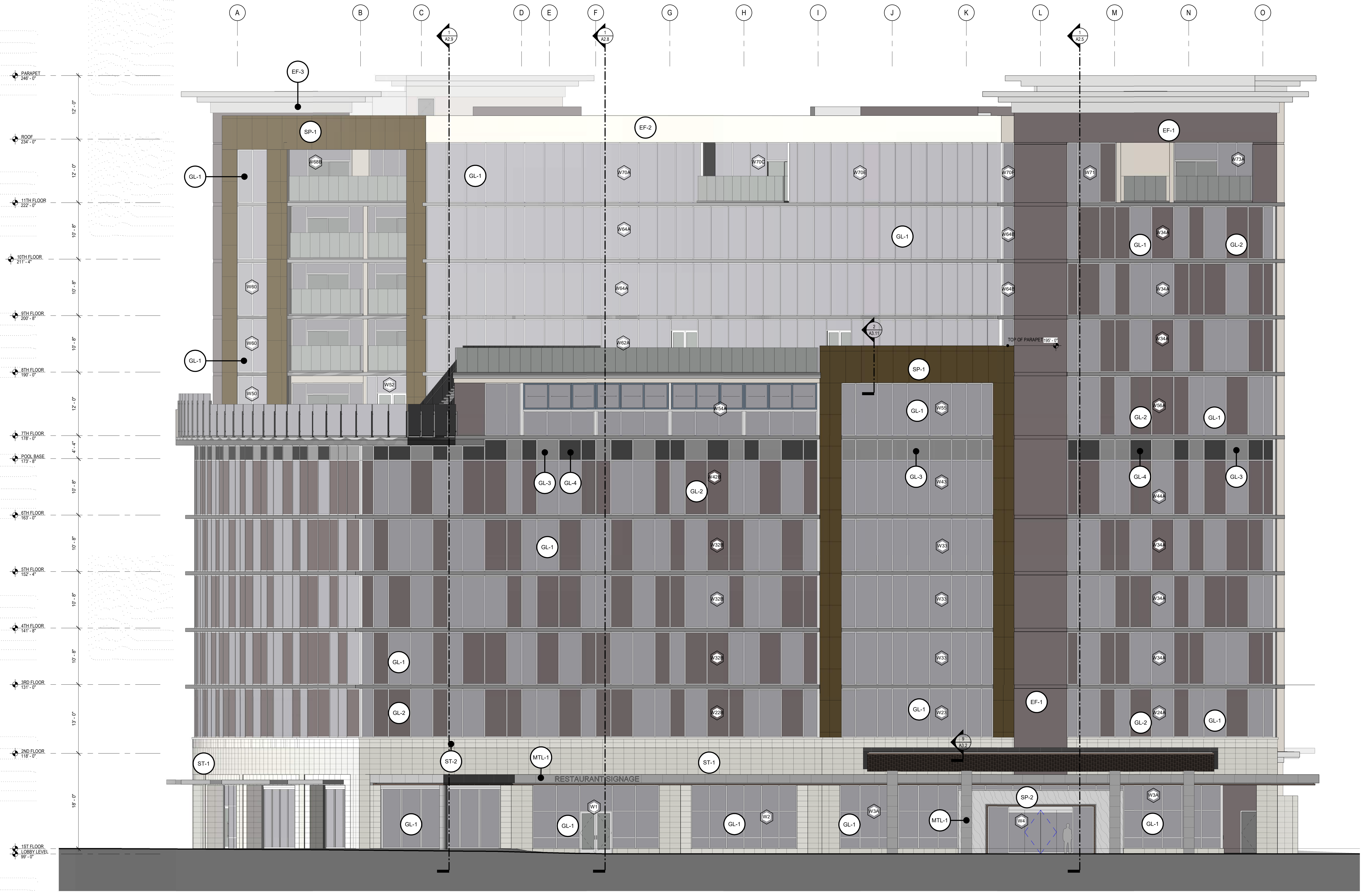
ARCHITECTURAL SEAL: BUTLER, ROSENBERG & PARTNERS, INC. 201748 GEOFFREY H. BUTLER ARCHITECT

ISSUE DATE: JULY 25, 2019
 PROJECT: 18041.CWSA.5

JANUARY 28, 2020
 Exp. 03.31.2022

ARIZONA ARCHITECTURAL LICENSE NUMBER: 28748

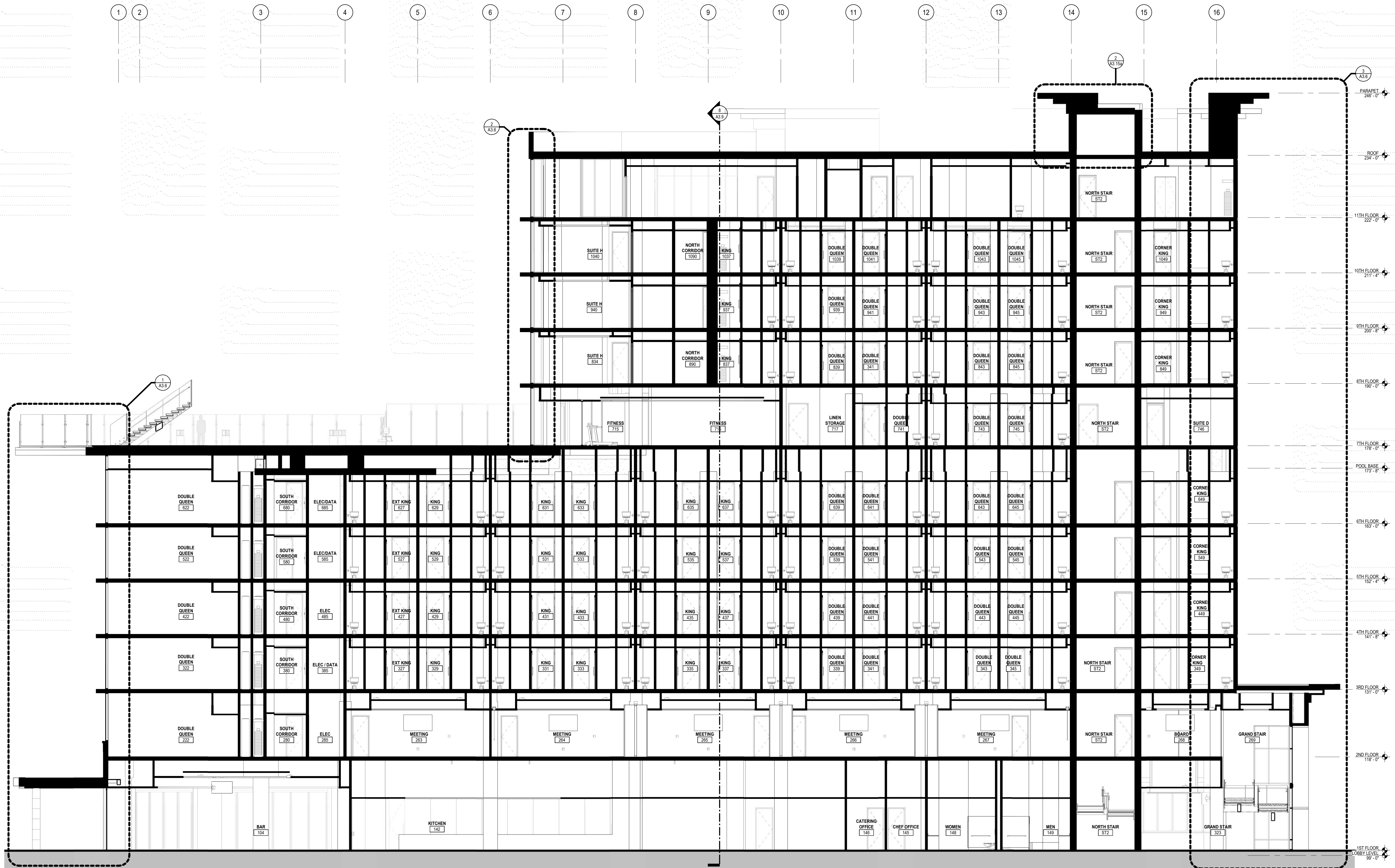
BM 360/18041 - CWSA CAESARS REPUBLICA, ARCH. CWSA, 2019.rvt 1/30/2020 11:51:56 AM



1 WEST ELEVATION
 1/8" = 1'-0"


CITY OF SCOTTSDALE
 BUILDING DEPARTMENT
 THESE PLANS HAVE BEEN APPROVED
 AND ARE LEGAL FOR CONSTRUCTION
 PROVIDED ALL APPLICABLE ORDINANCES OF THE
 CITY OF SCOTTSDALE ARE OBSERVED

APPROVED
FINAL PLANS PLANNING
02/27/2020
DATE APPROVED BY



REVISIONS	
3	ADDENDUM 03 8/30/2019

BUILDING SECTION
CAESARS REPUBLIC SCOTTSDALE
 FASHION SQUARE - SCOTTSDALE, ARIZONA
BUTLER, ROSENBERG & PARTNERS, INC.
 319 N MAIN ST. SUITE 200, SPRINGFIELD, MISSOURI, 65806 T: 417-865-6100
STATE OF MISSOURI CERTIFICATE OF ARCHITECTURE #18841-CVSA-S


 DRAWN BY SA, ME, JSN, GM
 CHECKED BY BJV, GM
 ISSUE DATE JULY 25, 2019
 PROJECT 18841-CVSA-S

A2.9
 CITY OF SCOTTSDALE
 BUILDING PLANS
 THESE PLANS HAVE BEEN APPROVED
 AND ARE VALID FOR A PERIOD OF
 180 DAYS FROM THE DATE OF THIS
 ORDER OF APPROVAL
 CITY OF SCOTTSDALE
 JANUARY 28, 2020
 Exp. 03.31.2022
 GEOFFREY H. BUTLER
 ARIZONA ARCHITECTURAL LICENSE NUMBER: 28778
BM 360/18041 - CVSA CAESARS REPUBLICA, ARCH, CVSA, 2019-01 100/2020 11:53:07 AM

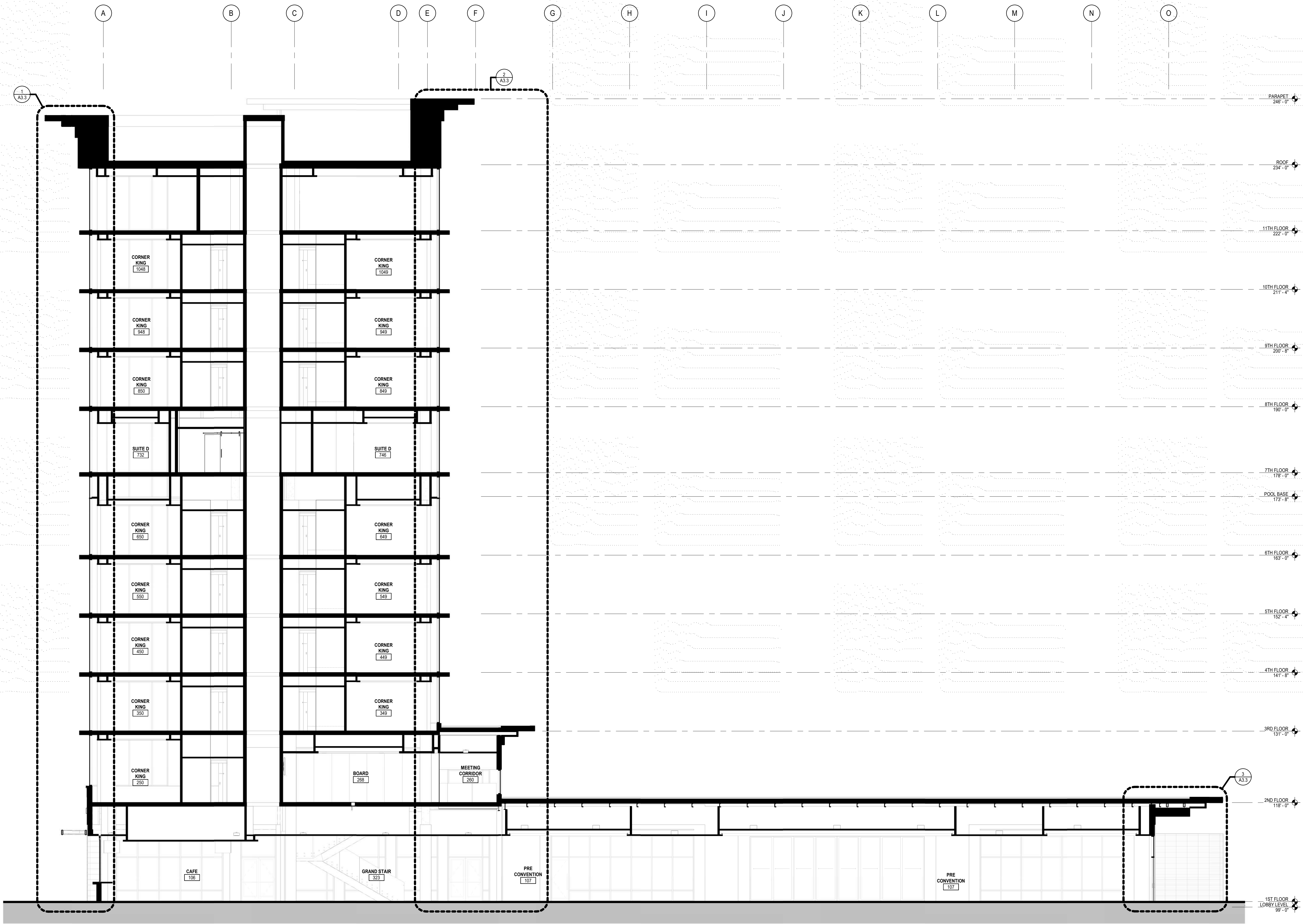
1 EAST / WEST BUILDING SECTION
1/8" = 1'-0"

APPROVED
FINAL PLANS PLANNING

02/27/2020


DATE

APPROVED BY



REVISIONS					
3	ADDENDUM 03	8/30/2019	9	ADDENDUM 09	11/15/2019

BUILDING SECTION
CAESARS REPUBLIC SCOTTSDALE
 FASHION SQUARE - SCOTTSDALE, ARIZONA
BUTLER, ROSENBERY & PARTNERS, INC.
 319 N MAIN ST. SUITE 200, SPRINGFIELD, MISSOURI, 65806 T: 417-865-6100
STATE OF MISSOURI CERTIFICATE OF ARCHITECTURE #18841-CVSA-S


 DRAWN BY SA, ME, JSN, GM
 CHECKED BY BJV, GM
 ISSUE DATE JULY 25, 2019
 PROJECT 18841-CVSA-S

1 NORTH / SOUTH BUILDING SECTION
 1/8" = 1'-0"

CITY OF SCOTTSDALE
 BUILDING PLANS
 THESE PLANS HAVE BEEN APPROVED
 FOR RECORDATION AND RECORDING
 THIS DOES NOT AUTHORIZE VIOLATIONS OF ANY
 CODE OR ORDINANCE

CITY OF SCOTTSDALE
 JANUARY 28, 2020
 Exp. 03.31.2022
 GEOFFREY H. BUTLER
 ARIZONA ARCHITECTURAL LICENSE NUMBER: 28748
 BM 360/18041 - CVSA CAESARS REPUBLICA_ARCH_CVSA_2019.rvt 1/30/2020 11:53:19 AM

A2.10

APPROVED

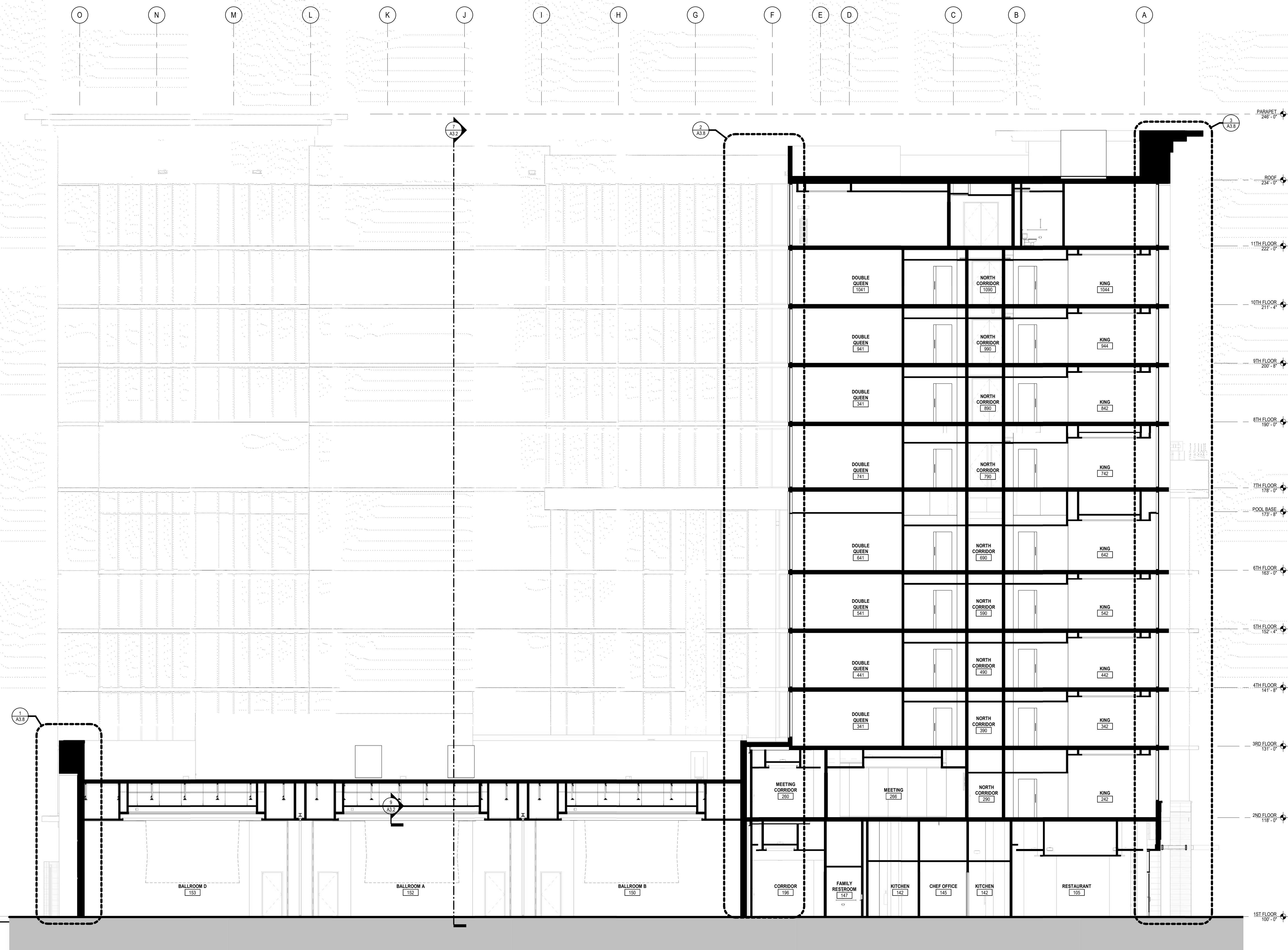
FINAL PLANS PLANNING

02/27/2020

DATE

APPROVED BY

KEYNOTE LEGEND



1 NORTH / SOUTH BUILDING SECTION
1/8" = 1'-0"

NO.	DESCRIPTION	DATE	BY
1	ADDENDUM 01	8/16/2019	
3	ADDENDUM 03	8/30/2019	
9	ADDENDUM 09	11/15/2019	

BUILDING SECTION
CAESARS REPUBLIC SCOTTSDALE
 FASHION SQUARE - SCOTTSDALE, ARIZONA
BUTLER, ROSENBERY & PARTNERS, INC.
 319 N MAIN ST. SUITE 200, SPRINGFIELD, MISSOURI, 65806 T: 417-865-6100
 STATE OF MISSOURI: EXPIRES 01/28/2024

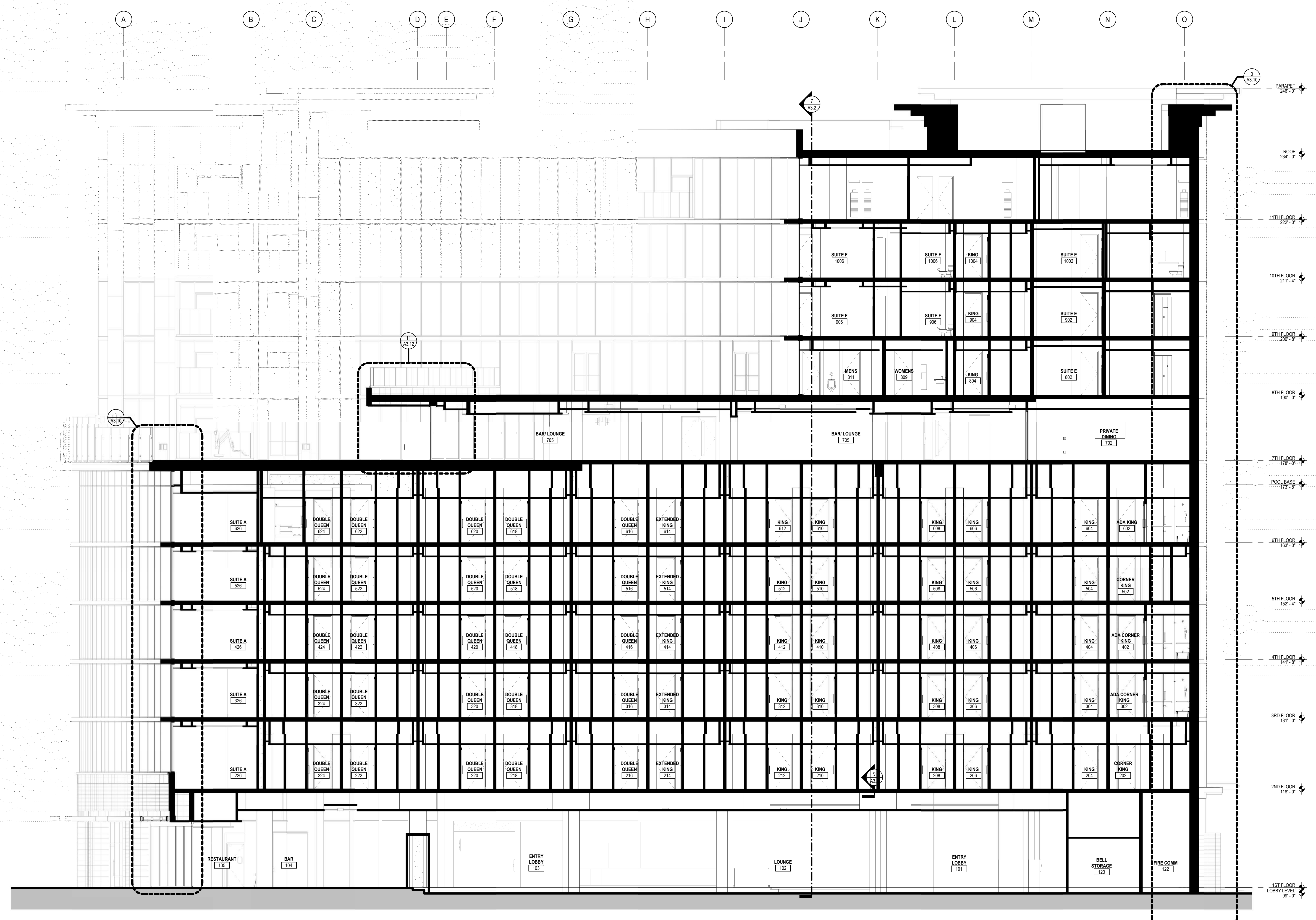
COPYRIGHT © 2019 BUTLER, ROSENBERY & PARTNERS, INC.
 DRAWN BY SA, ME, JSN, GM, ISSUE DATE JULY 25, 2019
 CHECKED BY BJV, GM, PROJECT 18541.CYSA.S

CITY OF SCOTTSDALE
 BUILDING DEPARTMENT
 THESE PLANS HAVE BEEN APPROVED
 AND MAY BE USED FOR PERMITTING
 THIS PLAN IS APPROVED IN ACCORDANCE WITH THE
 CITY OF SCOTTSDALE ORDINANCES
 CITY OF SCOTTSDALE
 JANUARY 28, 2020
 Exp. 03.31.2022
 GEOFFREY H. BUTLER
 ARIZONA ARCHITECTURAL LICENSE NUMBER: 207748
 BM 360/18041 - CIVSA CAESARS REPUBLICA_ARCH_CIVSA_2019.rvt 1/20/2020 11:53:39 AM

A2.11

APPROVED
FINAL PLANS PLANNING

02/27/2020
DATE APPROVED BY



REVISIONS			
3	ADDENDUM 03	8/30/2019	9 ADDENDUM 09 11/15/2019

BUILDING SECTION
CAESARS REPUBLIC SCOTTSDALE
FASHION SQUARE - SCOTTSDALE, ARIZONA

BUTLER, ROSENBERY & PARTNERS, INC.
319 N MAIN ST. SUITE 200, SPRINGFIELD, MISSOURI, 65806 T: 417-865-6100
STATE OF ARIZONA DEPARTMENT OF REVENUE - DIVISION OF ARCHITECTURE

COPYRIGHT © 2019 BUTLER, ROSENBERY & PARTNERS, INC.
DRAWN BY SA, ME, JSN, GM ISSUE DATE JULY 25, 2019
CHECKED BY GEOFFREY H. BUTLER PROJECT 18041.CYSA.S
BYV, GM



A2.12
JANUARY 28, 2020
Exp. 03.31.2022
GEOFFREY H. BUTLER
ARIZONA ARCHITECTURAL LICENSE NUMBER: 207749

1 NORTH / SOUTH BUILDING SECTION
1/8" = 1'-0"

CITY OF SCOTTSDALE
BUILDING DEPARTMENT
FINAL PLANS HAVE BEEN APPROVED
AND ARE SUBJECT TO A PERMIT
THIS DOES NOT PURPORT TO BE A CONTRACT
OR ANY OTHER LEGAL INSTRUMENT