

PRELIMINARY

NOT FOR
CONSTRUCTION
OR
RECORDING



**PARK VILLAGE
CONCEPT MASTER PLAN**
16001 N SCOTTSDALE RD
SCOTTSDALE, AZ, 85254

PRE-APP # 000-00-0000 ZONING # 000-00-0000 DRB # 000-00-00000

Date
03/17/2022

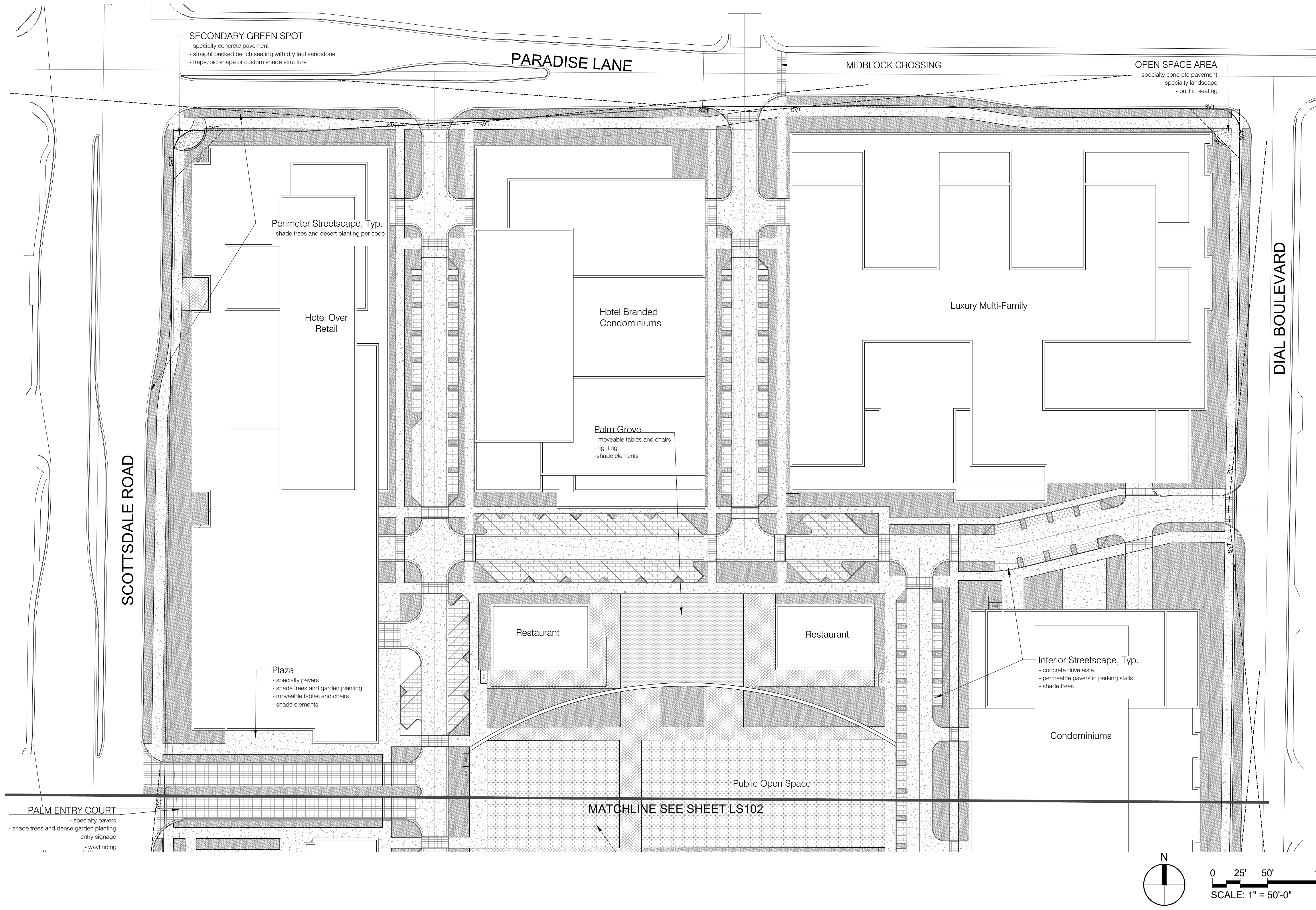
Drawings and written material appearing herein constitute original and unpublished work of the architect and may not be duplicated, used, or disclosed without written consent of the architect.

© 2019 NELSEN PARTNERS, INC.

Project No.
21018

SITE PLAN

LS101



REFERENCE NOTES SCHEDULE

| CODE | DESCRIPTION |
|-------------------------------------|-------------------------------|
| 1 - PAVING & SURFACING: DIVISION 32 | |
| 1-01 | CONCRETE PAVEMENT |
| 1-02 | STABILIZED DECOMPOSED GRANITE |
| 1-03 | DECOMPOSED GRANITE |
| 1-04 | CONCRETE POOL DECK |
| 1-05 | PERMEABLE PAVER |
| 1-06 | VEHICULAR PAVERS |
| 1-07 | PEDESTRIAN PAVERS |
| 1-07 | NATURAL TURF |
| 1-08 | BIKE PARKING/STATION ZONE |



PRELIMINARY

NOT FOR
CONSTRUCTION
OR
RECORDING



**PARK VILLAGE
CONCEPT MASTER PLAN**
16001 N SCOTTSDALE RD
SCOTTSDALE, AZ, 85254

PRE-APP # 000-00-0000 ZONING # 000-00-0000 DRB # 000-00-0000

Date
03/17/2022

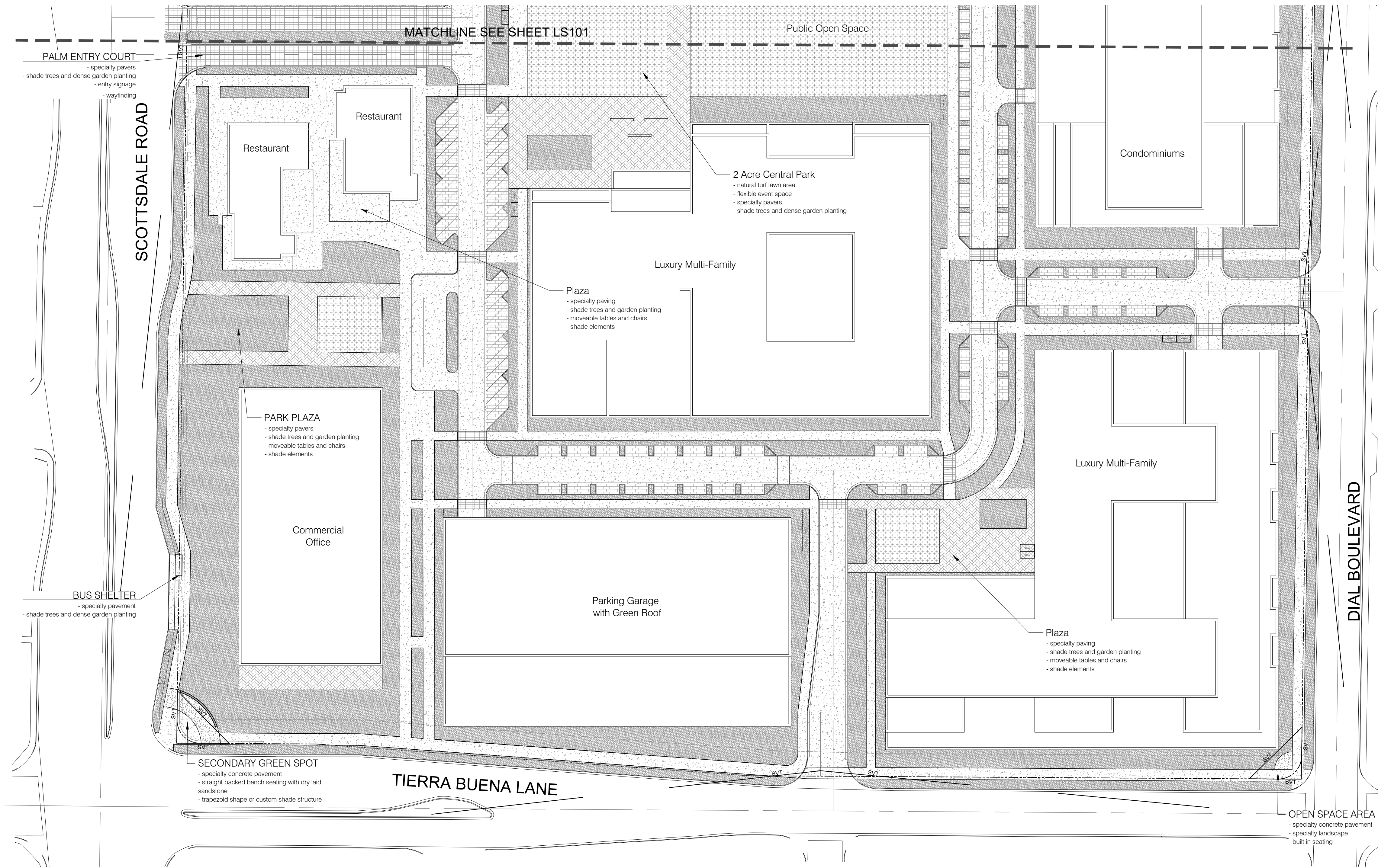
Drawings and written material appearing herein constitute original and unpublished work of the architect and may not be duplicated, used, or disclosed without written consent of the architect.

© 2019 NELSEN PARTNERS, INC.

Project No.
21018

SITE PLAN

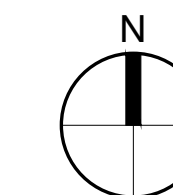
LS102



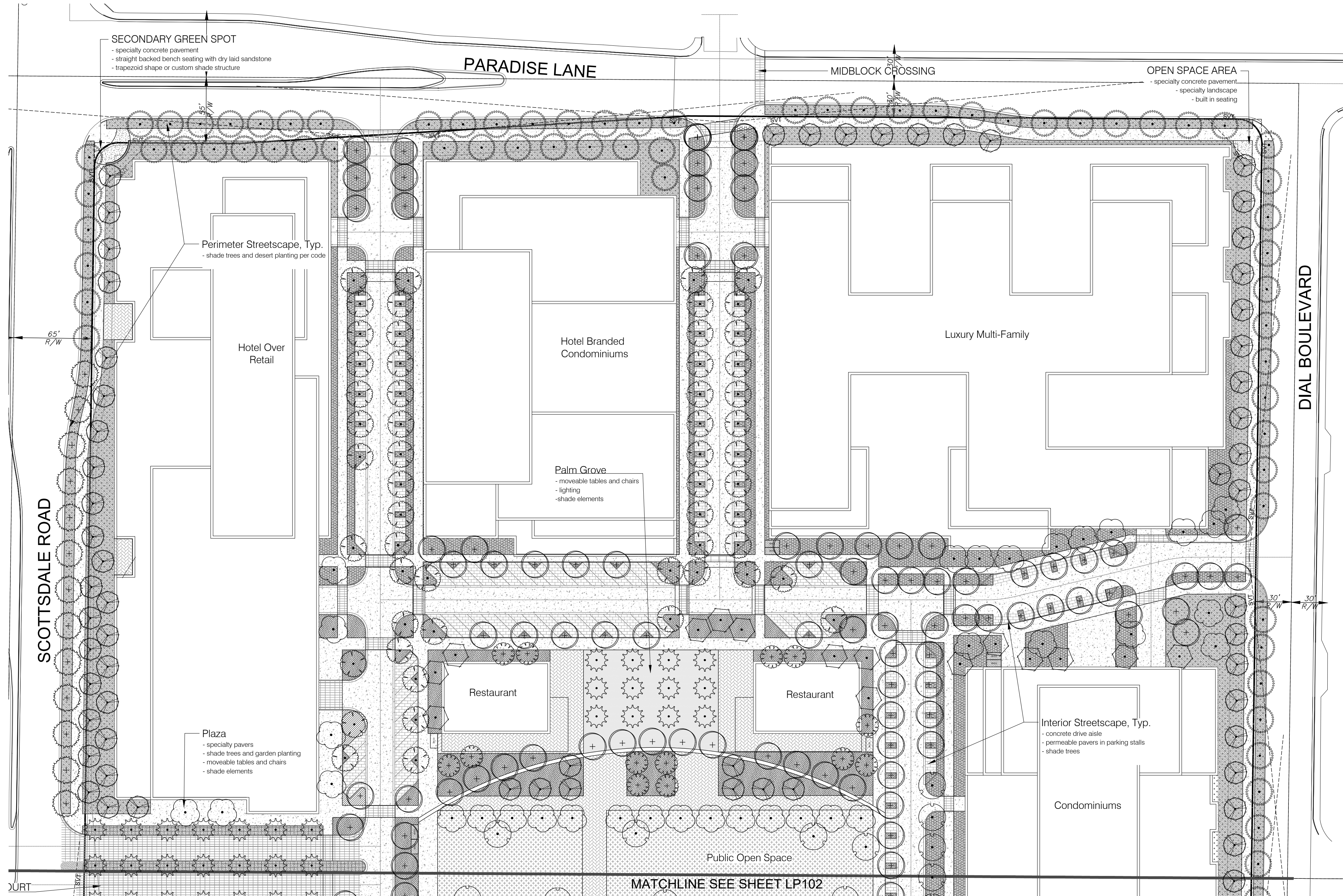
REFERENCE NOTES SCHEDULE

1 - PAVING & SURFACING: DIVISION 32
DESCRIPTION

| CODE | DESCRIPTION |
|------|-------------------------------|
| 1-01 | CONCRETE PAVEMENT |
| 1-02 | STABILIZED DECOMPOSED GRANITE |
| 1-03 | DECOMPOSED GRANITE |
| 1-04 | CONCRETE POOL DECK |
| 1-05 | PERMEABLE PAVER |
| 1-06 | VEHICULAR PAVERS |
| 1-07 | PEDESTRIAN PAVERS |
| 1-07 | NATURAL TURF |
| 1-08 | BIKE PARKING/STATION ZONE |



0 25' 50' 100'
SCALE: 1" = 50'-0"



NOTE:
 1. ALL TREE CANOPIES WITHIN THE SIGHT VISIBILITY TRIANGLE TO MEET 8 MIN. CLEAR FROM CURB.
 2. FOR DUST CONTROL, INSTALL 2" SCREENED DECOMPOSED GRATE AT 2" MIN. DEPTH IN ALL LANDSCAPE AREAS.

| TREES | QTY | BOTANICAL / COMMON NAME | SIZE |
|------------------|-----|--|--|
| [Symbol] | | PARKINSONIA PRAECOX PALO BREA | 30' BOX, MULTI, 1.75' CAL. MIN. BRANCH |
| [Symbol] | | CHILOPSIS LINEARIS ARTS SEEDLESS ARTS SEEDLESS DESERT WILLOW | 24' BOX, MULTI, 1.5' CAL. MIN. BRANCH |
| [Symbol] | | CHITALPA TASH-KENTENSIS CHITRPA | 24' BOX, MULTI, 1.5' CAL. MIN. BRANCH |
| [Symbol] | | FRAXINUS GREGGII LITTLE LEAF ASH | 30' BOX, 2.5' CAL. |
| [Symbol] | | FRAXINUS VELITNA ARIZONA ASH | 30' BOX, 2.5' CAL. |
| [Symbol] | | PHOENIX DACTYLOPERA DATE PALM | 15 HT |
| [Symbol] | | PISTACIA CHINENSIS 'RED PUSH' RED PUSH CHINESE PISTACHE | 30' BOX, 4' CAL. |
| [Symbol] | | PROSOPIS X LESLIE ROY PP23860 LESLIE ROY HYBRID MESQUITE | 30' BOX, 2.5' CAL. |
| [Symbol] | | QUERCUS VIRGINIANA SOUTHERN LIVE OAK | 30' BOX, 2.5' CAL. |
| [Symbol] | | SOPHORA SECUNDFLORA TEXAS MOUNTAIN LAUREL | 24' BOX, 1' CAL. |
| [Symbol] | | ULMUS PARVIFOLIA CHINESE ELM | 48' BOX, 3.5' CAL. |
| SALVAGE PLANTS | QTY | BOTANICAL / COMMON NAME | SIZE |
| [Symbol] | 5 | EXISTING TREES TO REMAIN IN PLACE | N/A |
| | | EXISTING PALMS SALVAGE AND PLANT PER PLAN | |
| PERIMETER STREET | QTY | BOTANICAL / COMMON NAME | SIZE |
| [Symbol] | | ALOE BARBADENSIS YELLOW BLOOMING ALOE | 5 GAL. |
| [Symbol] | | EREMOPHILA GLABRA 'MINGENOW GOLD' OUTBACK SUNRISE EMU | 5 GAL. |
| [Symbol] | | DASYLIRON WHEELERI DESERT SPOON | 5 GAL. |
| [Symbol] | | EUPHORBIA ANTISYPHILLITICA CANDLELLA | 5 GAL. |
| [Symbol] | | HESPERALOE PARVIFLORA 'PERPA' TM/ BRAKELIGHTS RED YUCCA | 5 GAL. |
| [Symbol] | | DALEA FRUTESCENS BLACK DALEA | 5 GAL. |
| [Symbol] | | SALVIA CLEVELANDI CHAMPARAL SAGE | 5 GAL. |
| [Symbol] | | CORDIA PARVIFOLIA LITTLE LEAF CORDIA | 5 GAL. |
| [Symbol] | | YUCCA FLACCIDA ADAMS' NEEDLE | 5 GAL. |
| INTERIOR STREET | QTY | BOTANICAL / COMMON NAME | SIZE |
| [Symbol] | | ALOE BARBADENSIS YELLOW BLOOMING ALOE | 1 GAL. |
| [Symbol] | | BOUTELLOIA GRACILIS BLUE GRAMA | 5 GAL. |
| [Symbol] | | DASYLIRON ACROTRICHUM GREEN DESERT SPOON | 5 GAL. |
| [Symbol] | | DIETES BICOLOR FORTNIGHT LILY | 5 GAL. |
| [Symbol] | | HESPERALOE PARVIFLORA 'PERPA' TM/ BRAKELIGHTS RED YUCCA | 5 GAL. |
| [Symbol] | | JASMINUM SAMBAC ARABIAN JASMINE | 5 GAL. |
| [Symbol] | | JUSTITIA SPICIGERA MEXICAN HONEYBUCKLE | 5 GAL. |
| [Symbol] | | LANTANA MONTEVIDENSIS PURPLE TRAILING LANTANA | 1 GAL. |
| [Symbol] | | MUHLENBERGIA CAPILLARIS REGAL MIST | 5 GAL. |
| [Symbol] | | MYRTUS COMMUNIS 'COMPACTA' DWARF MYRTLE | 5 GAL. |
| [Symbol] | | OLEA EUROPAEA 'MONTRA' LITTLE OLLIE @ DWARF OLIVE | 5 GAL. |
| [Symbol] | | OPUNTIA ENGELMANNI ENGLISHMAN'S PRICKLY PEAR | 5 GAL. |
| [Symbol] | | RUELLIA BRITTONIANA RUELLIA | 5 GAL. |
| [Symbol] | | RUSSELLIA EQUISTIFORMIS FIRECRACKER PLANT | 5 GAL. |
| [Symbol] | | YUCCA PALLIDA PALE LEAF YUCCA | 1 GAL. |
| [Symbol] | | YUCCA RECURVIFOLIA CURVED LEAF YUCCA | 5 GAL. |
| PARK/GARDEN | QTY | BOTANICAL / COMMON NAME | SIZE |
| [Symbol] | | BOUTELLOIA GRACILIS BLUE GRAMA | 5 GAL. |
| [Symbol] | | DASYLIRON ACROTRICHUM GREEN DESERT SPOON | 5 GAL. |
| [Symbol] | | DIETES BICOLOR FORTNIGHT LILY | 5 GAL. |
| [Symbol] | | JASMINUM SAMBAC ARABIAN JASMINE | 1 GAL. |
| [Symbol] | | JUSTITIA SPICIGERA MEXICAN HONEYBUCKLE | 5 GAL. |
| [Symbol] | | MUHLENBERGIA CAPILLARIS REGAL MIST | 5 GAL. |
| [Symbol] | | MYRTUS COMMUNIS 'COMPACTA' DWARF MYRTLE | 5 GAL. |
| [Symbol] | | OLEA EUROPAEA 'MONTRA' LITTLE OLLIE @ DWARF OLIVE | 5 GAL. |
| [Symbol] | | RUELLIA BRITTONIANA RUELLIA | 5 GAL. |
| [Symbol] | | RUSSELLIA EQUISTIFORMIS FIRECRACKER PLANT | 5 GAL. |
| [Symbol] | | YUCCA PALLIDA PALE LEAF YUCCA | 5 GAL. |
| [Symbol] | | YUCCA RECURVIFOLIA CURVED LEAF YUCCA | 5 GAL. |
| [Symbol] | | WEDELIA TRILOBATA YELLOW DOT | 5 GAL. |
| PALM ENTRY | QTY | BOTANICAL / COMMON NAME | SIZE |
| [Symbol] | | BOUTELLOIA GRACILIS BLUE GRAMA | 1 GAL. |
| [Symbol] | | RUSSELLIA EQUISTIFORMIS FIRECRACKER PLANT | 5 GAL. |
| [Symbol] | | YUCCA RECURVIFOLIA CURVED LEAF YUCCA | 5 GAL. |
| OVER STRUCTURE | | BOTANICAL / COMMON NAME | VEG. |
| [Symbol] | | BOUTELLOIA GRACILIS BLUE GRAMA | 5 GAL. |
| [Symbol] | | DASYLIRON ACROTRICHUM GREEN DESERT SPOON | 5 GAL. |
| [Symbol] | | DIETES BICOLOR FORTNIGHT LILY | 5 GAL. |
| [Symbol] | | MUHLENBERGIA CAPILLARIS REGAL MIST | 5 GAL. |
| [Symbol] | | OLEA EUROPAEA 'MONTRA' LITTLE OLLIE @ DWARF OLIVE | 15 GAL. |
| [Symbol] | | RUSSELLIA EQUISTIFORMIS FIRECRACKER PLANT | 5 GAL. |
| [Symbol] | | PARTHENOCISSUS OLEOINFOLIA HACIENDA CREEPER | 5 GAL. |
| [Symbol] | | YUCCA PALLIDA PALE LEAF YUCCA | 5 GAL. |
| [Symbol] | | YUCCA RECURVIFOLIA CURVED LEAF YUCCA | 5 GAL. |
| GRASS | QTY | BOTANICAL / COMMON NAME | |
| [Symbol] | | OVER SEEDED SOO TIFWAY 419 BERMUDA GRASS | |

Nelsen Partners, Inc.
Austin | Scottsdale
15210 North Scottsdale Road
Suite #300
Scottsdale, Arizona 85254
t 480.949.6800
nelsonpartners.com

PRELIMINARY
NOT FOR CONSTRUCTION OR RECORDING



PARK VILLAGE
CONCEPT MASTER PLAN
16001 N SCOTTSDALE RD
SCOTTSDALE, AZ, 85254

PRE-APP # 000-00-0000 ZONING # 000-00-0000 DRB # 000-00-0000

Date
03/17/2022

Drawings and written material appearing herein constitute original and unpublished work of the architect and may not be duplicated, used, or disclosed without written consent of the architect.
© 2019 NELSEN PARTNERS, INC.

Project No.
21018
PLANTING PLAN

LP101

PRELIMINARY

NOT FOR
CONSTRUCTION
OR
RECORDING



**PARK VILLAGE
CONCEPT MASTER PLAN**
16001 N SCOTTSDALE RD
SCOTTSDALE, AZ, 85254

PRE-APP # 000-00-0000 ZONING # 000-00-0000 DRB # 000-00-0000

Date
03/17/2022

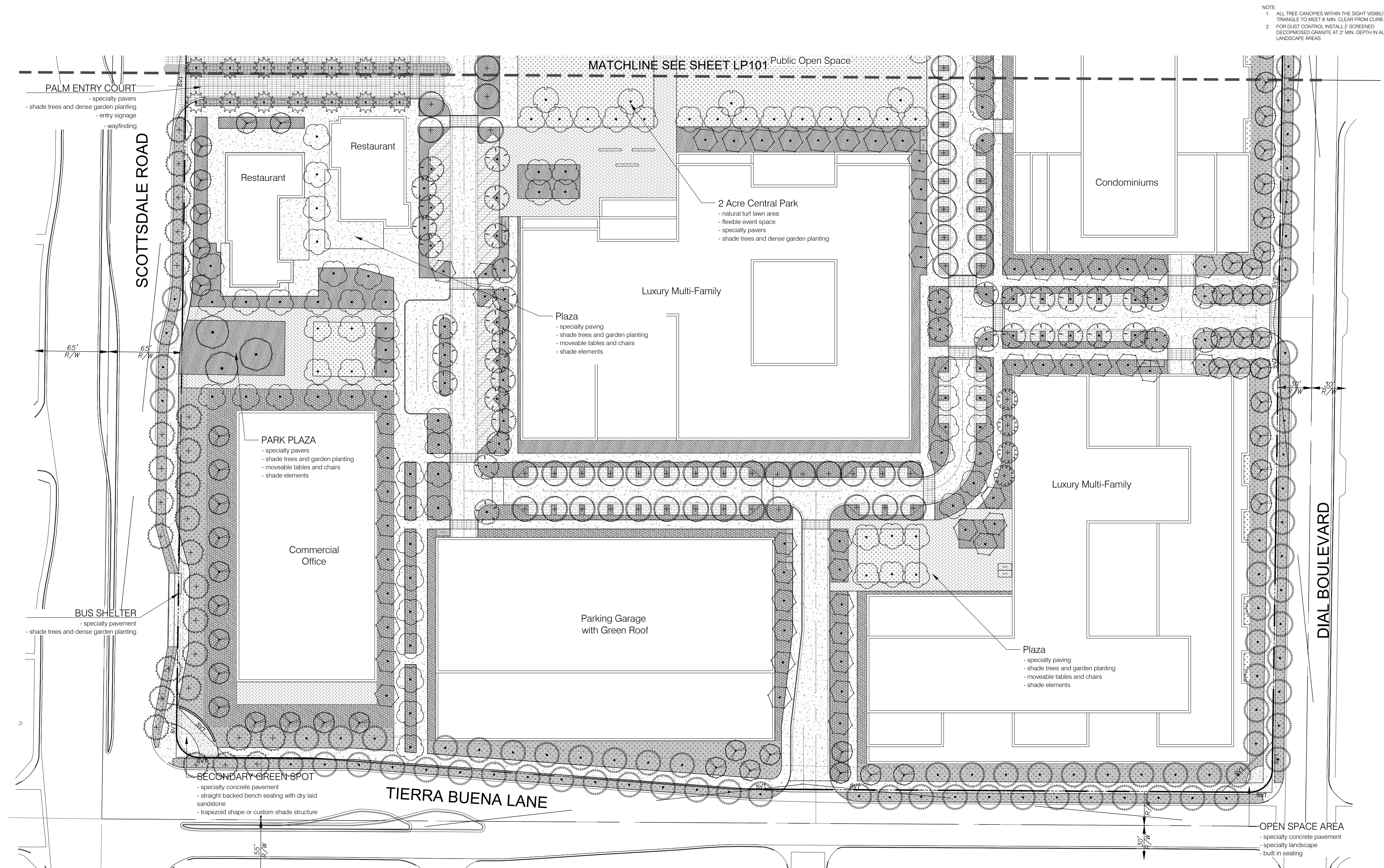
Drawings and written material appearing herein constitute original and unpublished work of the architect and may not be duplicated, used, or disclosed without written consent of the architect.

© 2019 NELSEN PARTNERS, INC.

Project No.
21018

PLANTING PLAN

LP102



- NOTE:
1. ALL TREE CANOPIES WITHIN THE SIGHT VISIBILITY TRIANGLE TO MEET 8 MIN. CLEAR FROM CURB.
 2. FOR DUST CONTROL, INSTALL 2" SCREENED DECOMPOSED GRANITE AT 2" MIN. DEPTH IN ALL LANDSCAPE AREAS.

| TREES | QTY | BOTANICAL / COMMON NAME | SIZE |
|------------------|-----|--|--------------------------------------|
| [Symbol] | | PARKINSONIA PRAECOX PALO BREA | 30' BOX, MULTI, 7.5' CAL, MIN BRANCH |
| [Symbol] | | CHLORIS LINEARIS ARTS SEEDLESS ARTS SEEDLESS DESERT WILLOW | 24' BOX, MULTI, 1.5' CAL, MIN BRANCH |
| [Symbol] | | CHITALPA TASH-KENTENSIS CHITLUPA | 24' BOX, MULTI, 1.5' CAL, MIN BRANCH |
| [Symbol] | | FRAXINUS GREGGII LITTLE LEAF ASH | 30' BOX, 2.5' CAL |
| [Symbol] | | FRAXINUS VELLUTINA ARIZONA ASH | 30' BOX, 2.5' CAL |
| [Symbol] | | PHOENIX DACTYLOPERA DATE PALM | 15 HT |
| [Symbol] | | PISTACIA CHINENSIS 'RED PUSH' RED PUSH CHINESE PISTACHE | 30' BOX, 4' CAL |
| [Symbol] | | PROSPERIS X LESLIE ROY PP23340 LESLIE ROY HYBRID MESQUITE | 30' BOX, 2.5' CAL |
| [Symbol] | | QUERCUS VIRGINIANA SOUTHERN LIVE OAK | 30' BOX, 2.5' CAL |
| [Symbol] | | SOPHORA SECUNDIFLORA TEXAS MOUNTAIN LAUREL | 24' BOX, 1' CAL |
| [Symbol] | | ULMUS PARVIFOLIA CHINESE ELM | 48' BOX, 3.5' CAL |
| SALVAGE PLANTS | QTY | BOTANICAL / COMMON NAME | SIZE |
| [Symbol] | 5 | EXISTING TREE TO REMAIN IN PLACE | N/A |
| | | EXISTING PALMS SALVAGE AND PLANT PER PLAN | |
| PERIMETER STREET | QTY | BOTANICAL / COMMON NAME | SIZE |
| [Symbol] | | ALOE BARBADENSIS YELLOW BLOOMING ALOE | 5 GAL |
| | | EREMOPHILA CLABRA 'MINOGEN GOLD' OUTBACK SUNRISE EMU | 5 GAL |
| | | DASYLIRON WHEELERI DESERT SPOON | 5 GAL |
| | | EUPHORBIA ANTIBYSSILLITICA CANDLELLA | 5 GAL |
| | | HEPERALOE PARVIFLORA 'PERPA' TM/ BRAKELIGHTS RED YUCCA | 5 GAL |
| | | DALEA FRUTESCENS BLACK DALEA | 5 GAL |
| | | SALVIA CLEVELANDI CHAMPARAL SAGE | 5 GAL |
| | | CORDIA PARVIFOLIA LITTLE LEASEL CORDIA | 5 GAL |
| | | YUCCA FLACCIDA ADAMS NEEDLE | 5 GAL |
| INTERIOR STREET | QTY | BOTANICAL / COMMON NAME | SIZE |
| [Symbol] | | ALOE BARBADENSIS YELLOW BLOOMING ALOE | 1 GAL |
| | | ROUPELLOIA GRACILIS BLUE GRAMA | 5 GAL |
| | | DASYLIRON ACROTRICHUM GREEN DESERT SPOON | 5 GAL |
| | | DIETES BICOLOR FORTNIGHT LILY | 5 GAL |
| | | HEPERALOE PARVIFLORA 'PERPA' TM/ BRAKELIGHTS RED YUCCA | 5 GAL |
| | | JASMINUM SAMBAC ARABIAN JASMINE | 5 GAL |
| | | JUSTITIA SPICIGERA MEXICAN HONEYBUCKLE | 5 GAL |
| | | LANTANA MONTEVIDENSIS PURPLE TRAILING LANTANA | 1 GAL |
| | | MUHLENBERGIA CAPILLARIS REGAL MIST | 5 GAL |
| | | MYRTUS COMMUNIS 'COMPACTA' DWARF MYRTLE | 5 GAL |
| | | OLEA EUROPAEA 'MONTRA' LITTLE OLLIE @ DWARF OLIVE | 5 GAL |
| | | OPUNTIA ENGELMANNI ENGLISHMAN'S PRICKLY PEAR | 5 GAL |
| | | RUELLIA BRITTONIANA RUELLIA | 5 GAL |
| | | RUSSELLIA EQUISTIFORMIS FIRECRACKER PLANT | 5 GAL |
| | | YUCCA PALLIDA PALE LEAF YUCCA | 1 GAL |
| | | YUCCA RECURVIFOLIA CURVED LEAF YUCCA | 5 GAL |
| PARK/GARDEN | QTY | BOTANICAL / COMMON NAME | SIZE |
| [Symbol] | | ROUPELLOIA GRACILIS BLUE GRAMA | 5 GAL |
| | | DASYLIRON ACROTRICHUM GREEN DESERT SPOON | 5 GAL |
| | | DIETES BICOLOR FORTNIGHT LILY | 5 GAL |
| | | JASMINUM SAMBAC ARABIAN JASMINE | 1 GAL |
| | | JUSTITIA SPICIGERA MEXICAN HONEYBUCKLE | 5 GAL |
| | | MUHLENBERGIA CAPILLARIS REGAL MIST | 5 GAL |
| | | MYRTUS COMMUNIS 'COMPACTA' DWARF MYRTLE | 5 GAL |
| | | OLEA EUROPAEA 'MONTRA' LITTLE OLLIE @ DWARF OLIVE | 5 GAL |
| | | RUELLIA BRITTONIANA RUELLIA | 5 GAL |
| | | RUSSELLIA EQUISTIFORMIS FIRECRACKER PLANT | 5 GAL |
| | | YUCCA PALLIDA PALE LEAF YUCCA | 5 GAL |
| | | YUCCA RECURVIFOLIA CURVED LEAF YUCCA | 5 GAL |
| | | WEDELIA TRILOBATA YELLOW DOT | 5 GAL |
| PALM ENTRY | QTY | BOTANICAL / COMMON NAME | SIZE |
| [Symbol] | | ROUPELLOIA GRACILIS BLUE GRAMA | 1 GAL |
| | | RUSSELLIA EQUISTIFORMIS FIRECRACKER PLANT | 5 GAL |
| | | YUCCA RECURVIFOLIA CURVED LEAF YUCCA | 5 GAL |
| OVER STRUCTURE | | BOTANICAL / COMMON NAME | SIZE |
| [Symbol] | | ROUPELLOIA GRACILIS BLUE GRAMA | 5 GAL |
| | | DASYLIRON ACROTRICHUM GREEN DESERT SPOON | 5 GAL |
| | | DIETES BICOLOR FORTNIGHT LILY | 5 GAL |
| | | MUHLENBERGIA CAPILLARIS REGAL MIST | 5 GAL |
| | | OLEA EUROPAEA 'MONTRA' LITTLE OLLIE @ DWARF OLIVE | 5 GAL |
| | | RUSSELLIA EQUISTIFORMIS FIRECRACKER PLANT | 15 GAL |
| | | PARITHEOCOSMUS OLEOINFOLIA HACIENDA CRESCER | |
| | | YUCCA PALLIDA PALE LEAF YUCCA | |
| | | YUCCA RECURVIFOLIA CURVED LEAF YUCCA | |
| GRASS | QTY | BOTANICAL / COMMON NAME | |
| [Symbol] | | OVER SEEDED SOO TIWAY 419 BERMUDA GRASS | |

