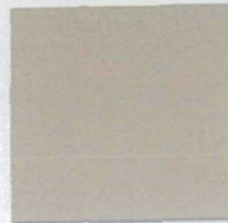


Address Numerals
Target Black "Akzo Noble Black"



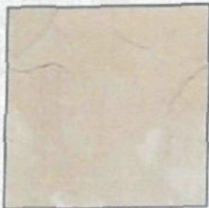
Bulls-eye & Target Letters
Target Red
"Benjamin Moore Carnival Red"



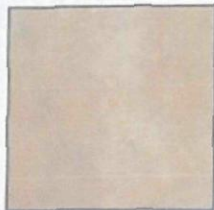
Top of Monument
ICI Paints #329 "Native Soil"



Target Sign Background
10 GA. Steel
Accelerated Natural Rust Finish



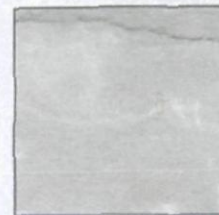
Stone Veneer
Anasazi Sandstone "Arizona Sunset"



Stone Veneer
Anasazi Sandstone "Sunset"

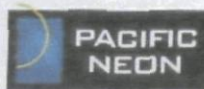


Stone Veneer
Anasazi Sandstone "Sedona Red"



Stone Veneer
Anasazi Sandstone "Mesquite"

Material Board



2039 Academy Way
Sacramento, CA, 95815
Tel: 916.827.0327
Fax: 916.827.2414
www.pacificneon.com

Project No. 06-1770-00

Account Executive: Ralph Condit

Client Approval:

Project Title:

Target, T-1327

Address:

32351 N. Scottsdale Road
Scottsdale, Arizona

Status:

Preliminary 5.30.07

Approved

Project Manager:

Project Engineer:

Sheet No.:

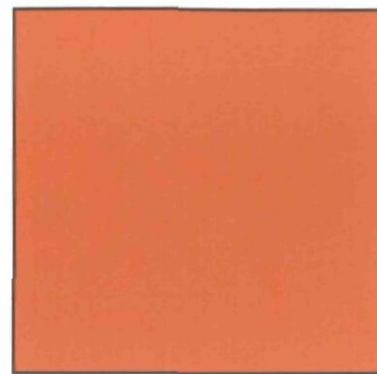
9

BH

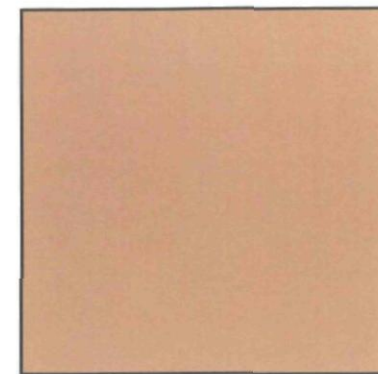
34-DR-2007
1ST: 06/12/07



Address Numerals
Target Black "Akzo Noble Black"



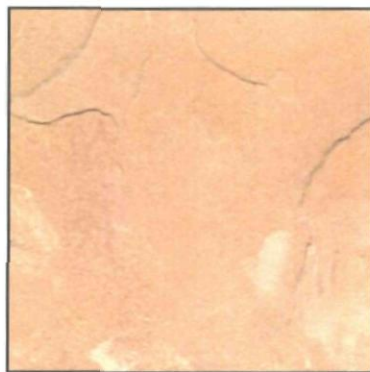
Bulls-eye & Target Letters
Target Red
"Benjamin Moore Carnival Red"



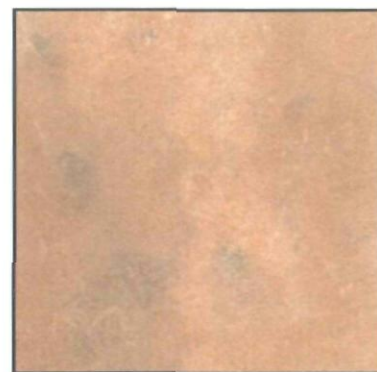
Top of Monument
ICI Paints #329 "Native Soil "



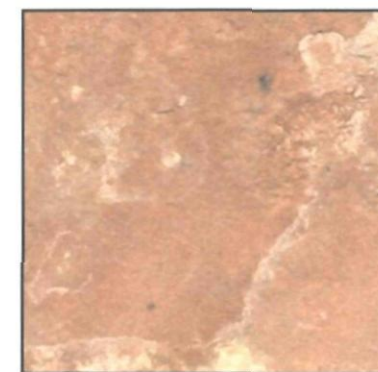
Target Sign Background
10 GA. Steel
Accelerated Natural Rust Finish



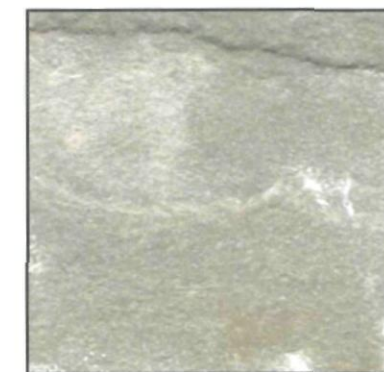
Stone Veneer
Anasazi Sandstone "Arizona Sunset"



Stone Veneer
Anasazi Sandstone "Sunset"



Stone Veneer
Anasazi Sandstone "Sedona Red"



Stone Veneer
Anasazi Sandstone "Mesquite"

Material Board



2939 Academy Way
Sacramento CA, 95815
Tel 916.927.0527
Fax 916.927.2414
www.pacificneon.com

Project No. 06-1770-00
Account Executive: Ralph Cundiff
Client Approval:

Project Title:
Target, T-1327

Address
32351 N. Scottsdale Road
Scottsdale, Arizona

Status
 Preliminary 5.30.07 Revision:

Copyright ©2006 All print and electronic art remain the sole, copyrighted property of Pacific Neon Company and are not to be distributed, copied, e-mailed or transferred in any way without prior written release from Pacific Neon Company.

Sheet No.

9

BH