

LOCATION PLAN

SCALE: NONE



NORTH

118-DR-1999#6

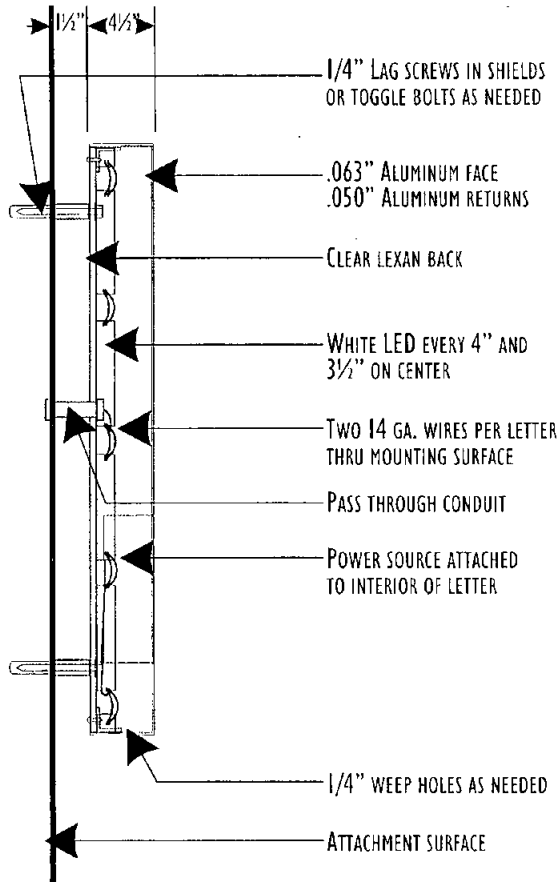
3/14/2007



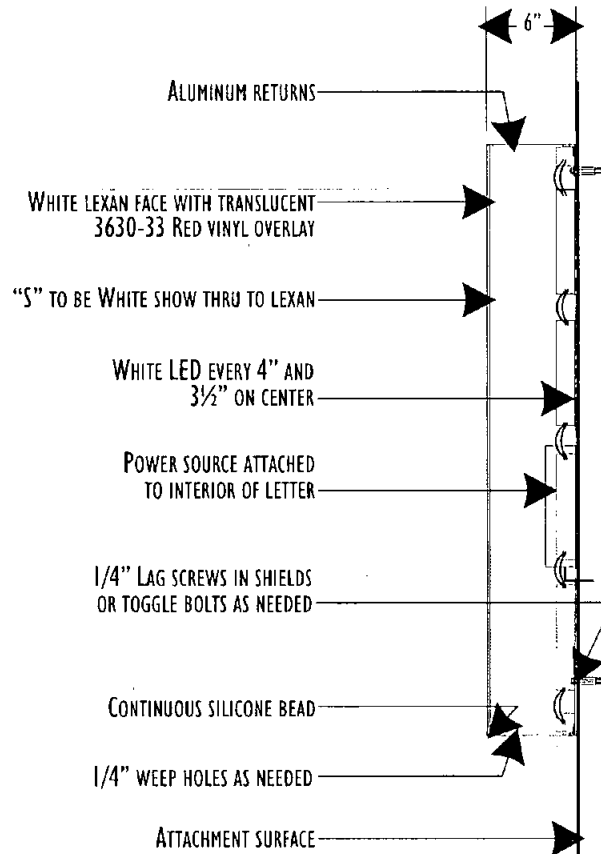
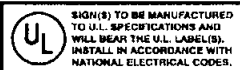
YOUNG ELECTRIC SIGN COMPANY

6725 W. Chicago Street, Chandler, Az 85226-3335 (480) 449-3726

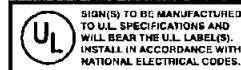
LIGHTING DETAILS CUT SHEET



LED ILLUMINATED REVERSE CHANNEL LETTER SECTION



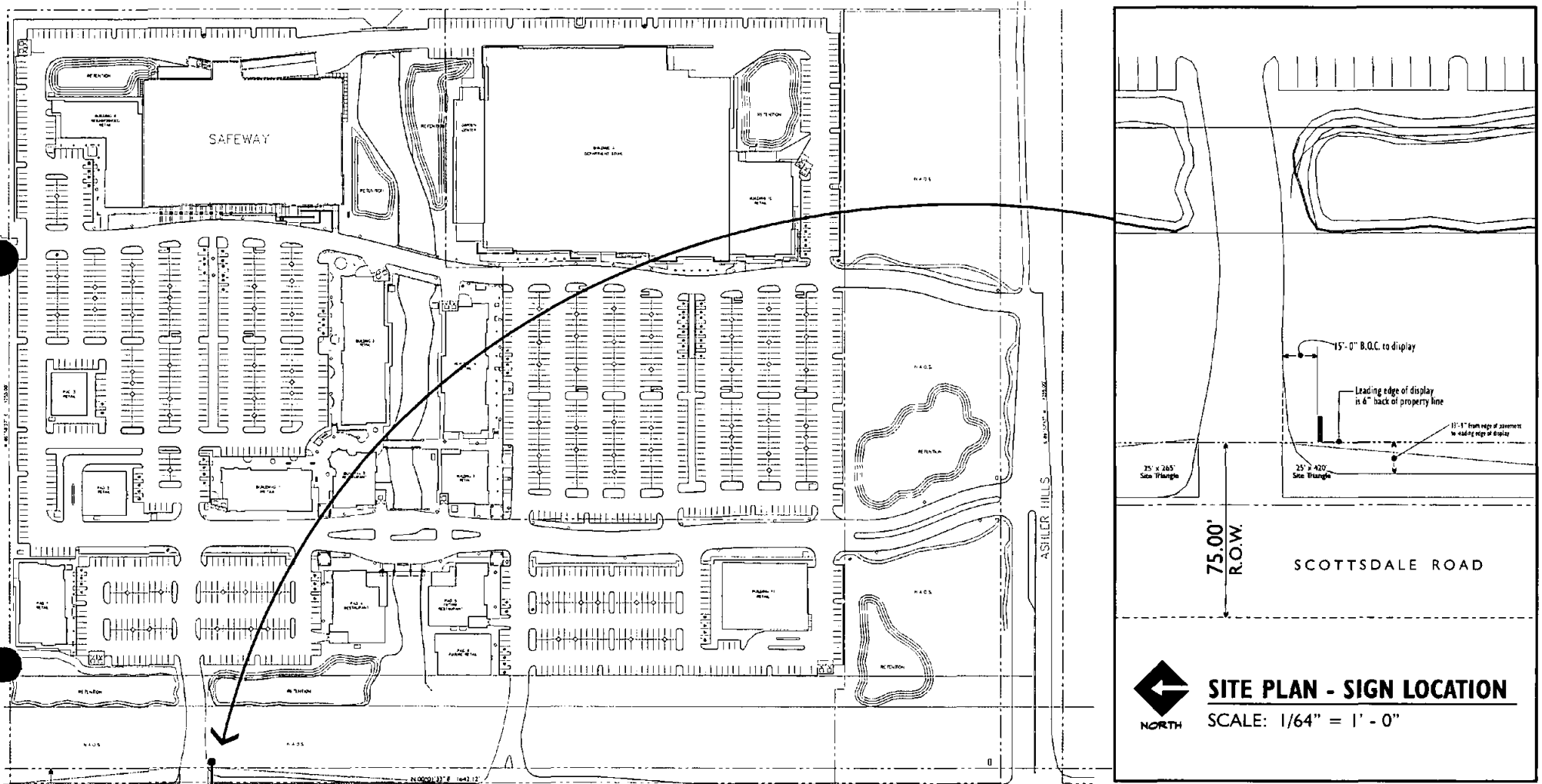
LED ILLUMINATED PAN CHANNEL LOGO SECTION



118-DR-1999#6
3/14/2007



YOUNG ELECTRIC SIGN COMPANY
6725 W. Chicago Street, Chandler, Az 85226-3335 (480) 449-3726



SITE PLAN - SIGN LOCATION

SCALE: 1/64" = 1' - 0"



SITE PLAN - SIGN LOCATION

SCALE: 1" = 164.2' - 0"

PHOENIX DIVISION
 6725 W. Chicago Street, Chandler, Az 85226-3335 (480) 449-3726
 ARIZONA CONTRACTOR LICENSE NO. #073322-007, AWRINGS NO. #073322, ELECTRICAL NO. #092800
YESCO, YOUNG & ELECTRIC SIGN COMPANY

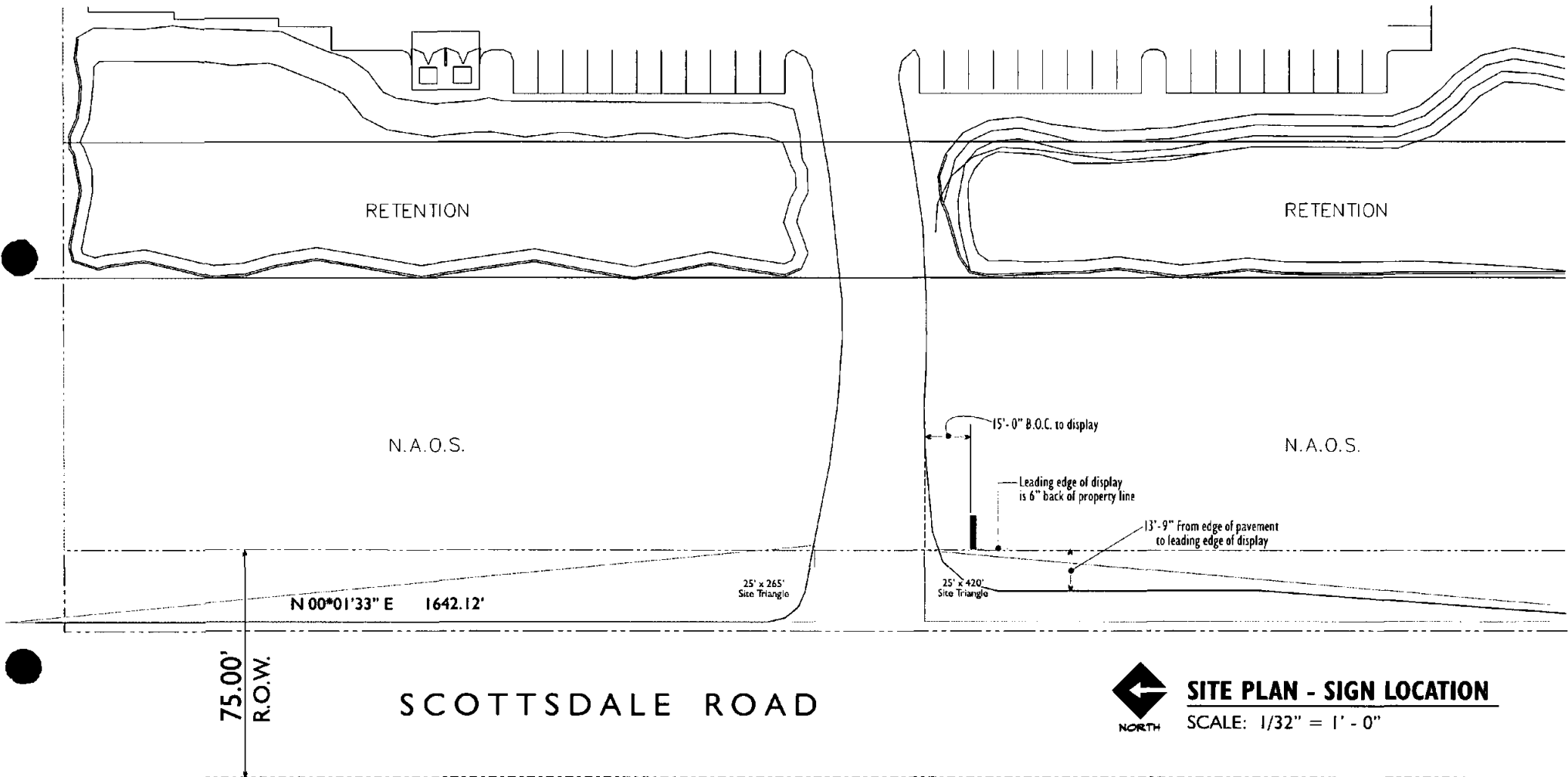
APPROVED BY:	REV #	DATE	BY	REV #	DATE	BY
SALESPERSON	△	04/20/06	TALL	△	01/18/07	TALL
CUSTOMER	△	07/18/06	TALL	△	02/14/07	TALL
LANDLORD	△	08/10/06	LSD	△	02/16/07	TALL
SALES MANAGER	△	08/30/06	TALL	△	06/11/07	TALL
DATE:	△	12/28/06	TALL			

FIRM NAME / PROJECT ADDRESS	ORIGINAL DATE:
SAFEWAY 1849	As Noted
32551 N. SCOTTSDALE ROAD	ORIG. DESIGNER: J Weadock
SCOTTSDALE, ARIZONA	SCALE: 04/04/06
SALESPERSON KELLY CHIPMAN	

60464-R9
 FILE DESIGN NUMBER
2 OF 4
 SHEET NUMBER

© This Drawing was created to assist you in visualizing our proposal. The original ideas herein are the property of Young Electric Sign Company. Permission to copy or revise this drawing can only be obtained thru a written agreement with Yesco. See your Sales Representative or call the nearest office of Young Electric Sign Co.

118-DR-1999#6
 2ND: 06/12/07



SITE PLAN - SIGN LOCATION
SCALE: 1/32" = 1' - 0"

PHOENIX DIVISION
6725 W. Chicago Street, Chandler, Az 85226-3335 (480) 449-3726
ARIZONA CONTRACTOR LICENSE NO. #073321-007, ARCHITECTS NO. #073322, ELECTRICAL NO. #092800
YESCO, YOUNG ELECTRIC SIGN COMPANY

APPROVED BY:			REV. #	DATE	BY	REV. #	DATE	BY
SALESPERSON			△	04/20/06	TALL	△	01/18/07	TALL
CUSTOMER			△	07/18/06	TALL	△	02/14/07	TALL
LANDLORD			△	08/10/06	LSD	△	02/16/07	TALL
SALES MANAGER			△	08/30/06	TALL	△	09/11/07	TALL
DATE:			△	12/28/06	TALL			

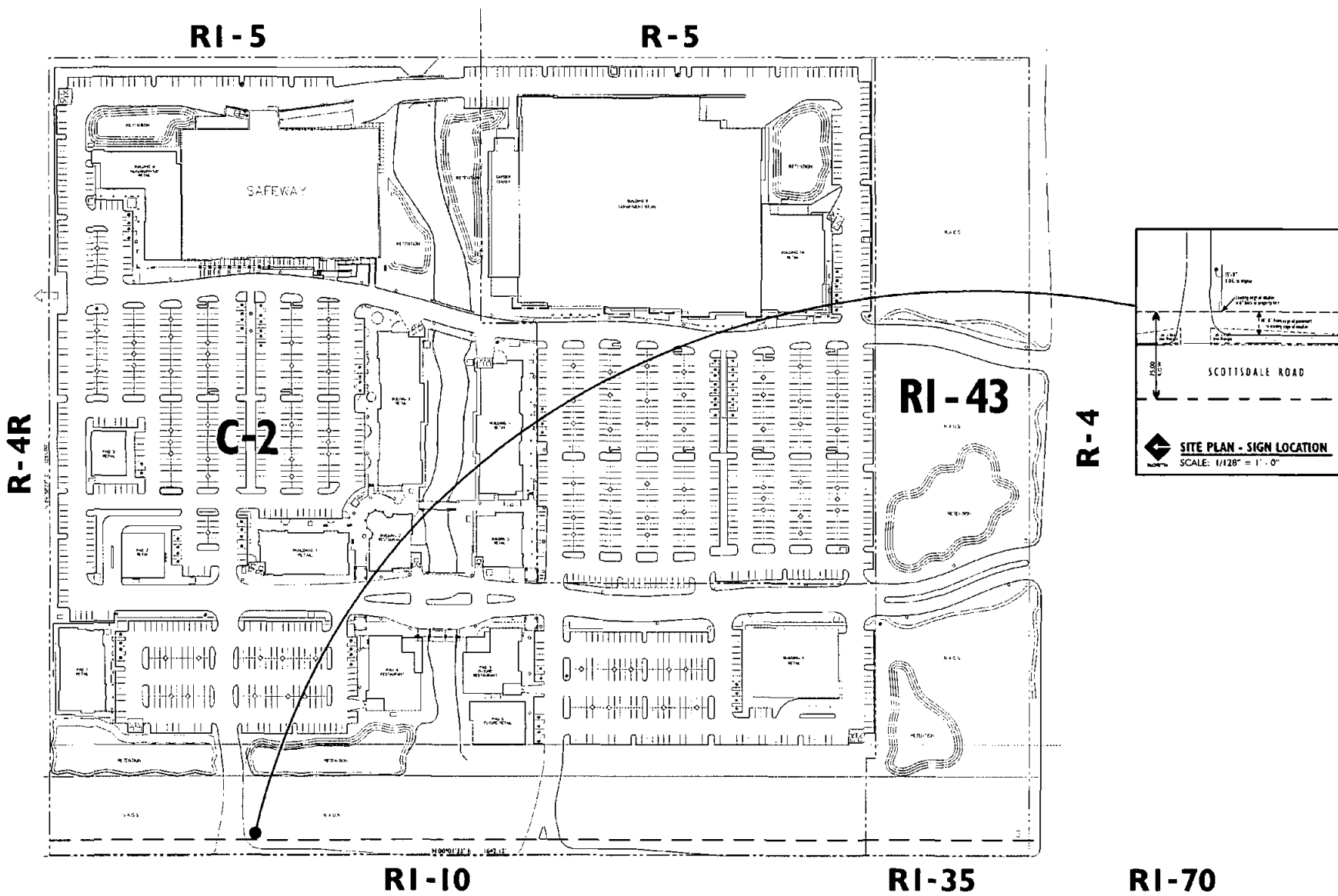
FIRM NAME / PROJECT ADDRESS		
SAFEWAY 1849	ORIGINAL DATE:	As Noted
32551 N. SCOTTSDALE ROAD	ORIG. DESIGNER:	J. Weadock
SCOTTSDALE, ARIZONA	SCALE:	04/04/06
SALESPERSON KELLY CHIPMAN		

60464-R9
FILE DESIGN NUMBER

3 OF 4
SHEET NUMBER

© This Drawing was created to assist you in visualizing our proposal. The original ideas herein are the property of Young Electric Sign Company. Permission to copy or revise this drawing can only be obtained thru a written agreement with Yesco. See your Sales Representative or call the nearest office of Young Electric Sign Co.

118-DR-1999#6
2ND: 06/12/07



SITE PLAN

SCALE: 1" = 300.00'



NORTH



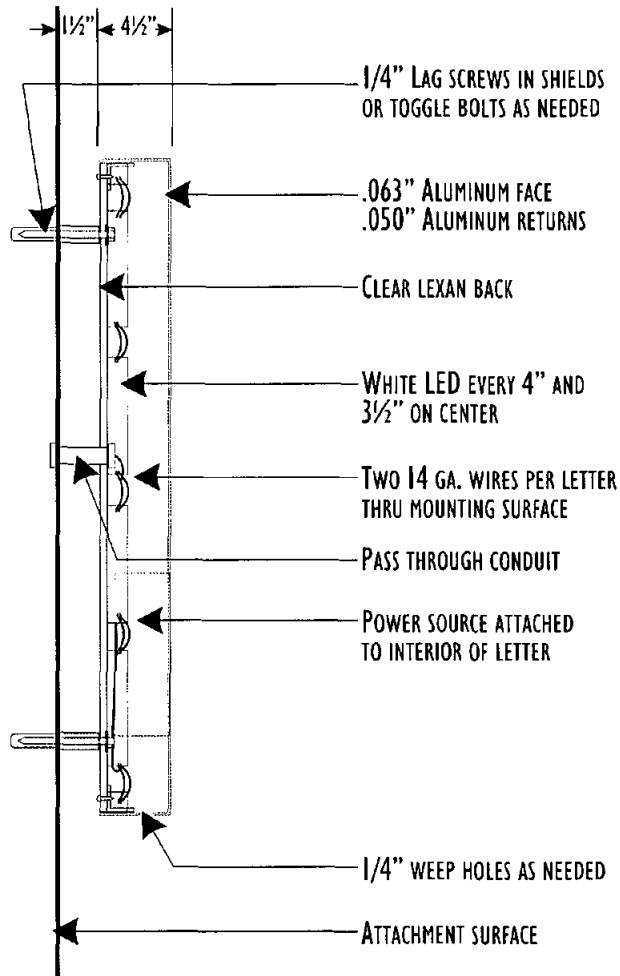
YESCO.

118-DR-1999#6
3/14/2007

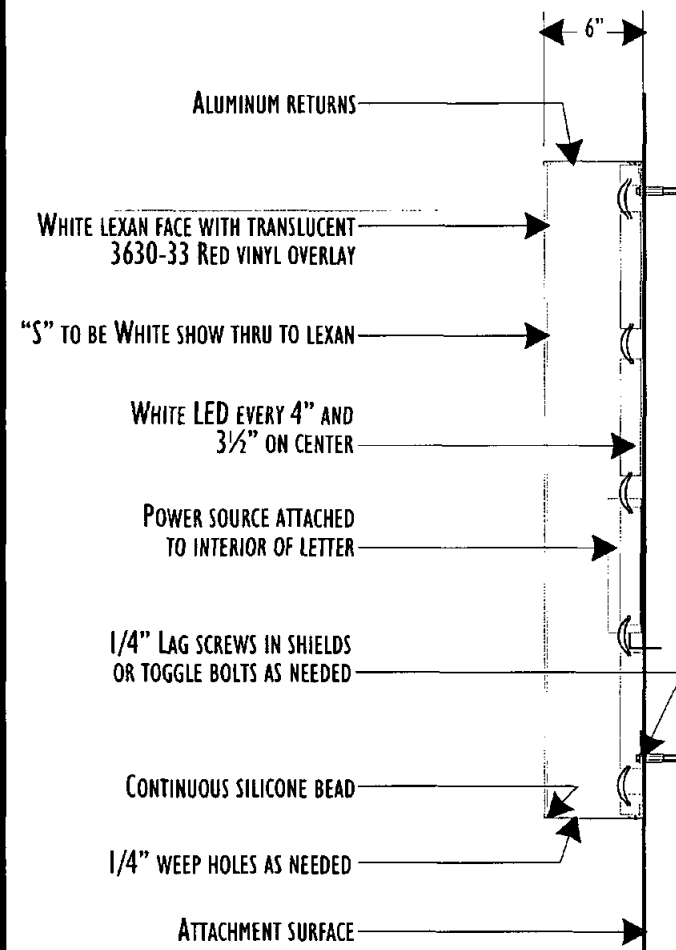
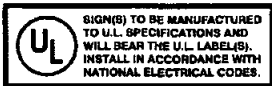
YOUNG ELECTRIC SIGN COMPANY

6725 W. Chicago Street, Chandler, Az 85226-3335 (480) 449-3726

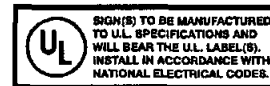
LIGHTING DETAILS CUT SHEET



LED ILLUMINATED REVERSE CHANNEL LETTER SECTION



LED ILLUMINATED PAN CHANNEL LOGO SECTION



YOUNG ELECTRIC SIGN COMPANY

6725 W. Chicago Street, Chandler, Az 85226-3335 (480) 449-3726

118-DR-1999#6

2ND: 06/12/07



LANDSCAPING NOTE:
REMOVAL AND/OR DAMAGE TO EXISTING VEGETATION WILL BE KEPT TO A MINIMUM DURING INSTALLATION OF THE SIGNAGE.

BY YESCO NATIONAL SALES:
LOGO: 6" Aluminum returns with retainers, painted PMS 186C Red. Illuminated with White LED's. Face: White lexan with Red vinyl 3630-33 overlay.
LETTERS: White LED's Halo-Illuminated Reverse channel, 3" deep returns, Aluminum .050" sides and .063" faces. Painted semi-gloss Black finish. Mounted with 1/4" x 1/2" non-corrosive standoffs.
SPLASH PANELS BEHIND LETTERS: FCO .125" aluminum, painted satin White finish. Mounted flush with non-corrosive fasteners.
FAB. BY YESCO PHOENIX.

FCO 10 gauge steel plate, painted satin White finish, stud mounted.
FAB. BY YESCO PHOENIX.

FCO 10 gauge steel plate (2 layers) with accelerated natural rusted finish.
FAB. BY YESCO PHOENIX.

BY YESCO PHOENIX:
1/2" Thick random cut cleft edge, varying sizes. Random mix of:
20% "Palo Verde" Sandstone by APG, 30% "Arizona Sunset" Sandstone by APG, 50% "Sunset" Sandstone by APG.

HALO-ILLUMINATED REVERSE CHANNEL MONUMENT DISPLAY

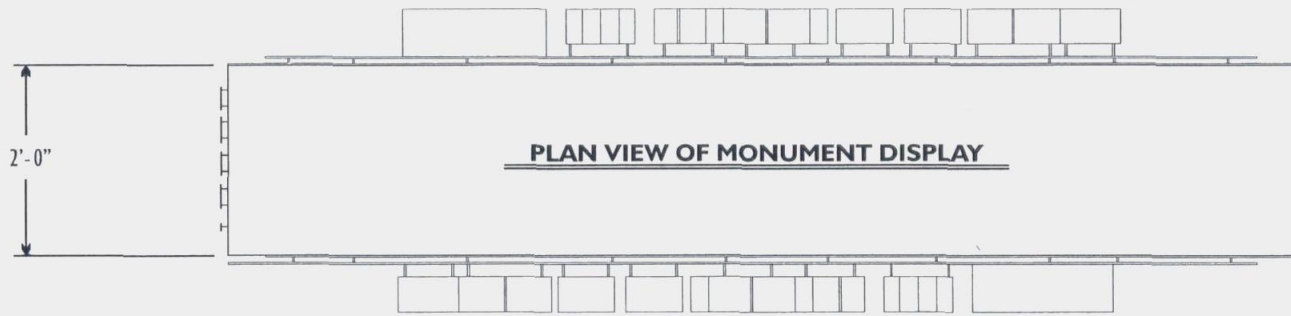
SCALE: 3/4" = 1'-0"

- △ Show Size Photos and Larger Size Detail per city requirements.
- △ Add 12" stone base, Reduce height to 5' per city requirements. △ Reduce SAFEWAY letters to 12", adjust overall length of display.
- △ Add spot. For splash panels behind letters, add note regarding landscaping, reduce height to 6".
- △ Change signs "A/B" to push-thru letters & logo. △ Delete "B", change "A" per city's request.
- △ Add second monument sign "B" with target layout. △ Change sign "B" target layout. △ Change signs "A/B" to push-thru letters & logo.

PHOENIX DIVISION 6725 W. Chicago Street, Chandler, Az 85226-3335 (480) 449-3726 ARIZONA CONTRACTOR LICENSE NO. #073322-007, AWARNINGS NO. #073322, ELECTRICAL NO. #062800 YESCO. YOUNG ELECTRIC SIGN COMPANY	APPROVED BY:			REV. #	DATE	BY	REV. #	DATE	BY	FIRM NAME / PROJECT ADDRESS	60464-R9 <small>FILE DESIGN NUMBER</small> I OF 4 <small>SHEET NUMBER</small>
	SALESPERSON	△	04/20/06	TALL	△	01/18/07	TALL	SAFEWAY 1849			
	CUSTOMER	△	07/18/06	TALL	△	02/14/07	TALL	32551 N. SCOTTSDALE ROAD			
	LANDLORD	△	08/10/06	LSD	△	02/16/07	TALL	SCOTTSDALE, ARIZONA			
	SALES MANAGER	△	08/30/06	TALL	△	06/11/07	TALL	ORIGINAL DATE: As Noted			
DATE:	△	12/28/06	TALL					ORIG. DESIGNER: J.Weadock			
								SALESPERSON KELLY CHIPMAN			SCALE: 04/04/06

© This Drawing was created to assist you in visualizing our proposal. The original ideas herein are the property of Young Electric Sign Company. Permission to copy or revise this drawing can only be obtained thru a written agreement with Yesco. See your Sales Representative or call the nearest office of Young Electric Sign Co.

118-DR-1999#6
2ND: 06/12/07



LANDSCAPING NOTE:
REMOVAL AND/OR DAMAGE TO EXISTING VEGETATION WILL BE KEPT TO A MINIMUM DURING INSTALLATION OF THE SIGNAGE.

- BY YESCO NATIONAL SALES:
LOGO - 6" Aluminum returns with retainers, painted PMS 186C Red. Illuminated with White LED's. Face: White lexan with Red vinyl 3630-33 overlay.
- LETTERS: White LED's Halo-Illuminated Reverse channel, 3" deep returns, Aluminum .050" sides and .063" faces. Painted semi-gloss Black finish. Mounted with 1/4" x 1/2" non-corrosive standoffs.
- SPLASH PANELS BEHIND LETTERS: FCO .125" aluminum, painted satin White finish. Mounted flush with non-corrosive fasteners.
FAB. BY YESCO PHOENIX.
- FCO 10 gauge steel plate, painted satin White finish, stud mounted.
FAB. BY YESCO PHOENIX.
- FCO 10 gauge steel plate (2 layers) with accelerated natural rusted finish.
FAB. BY YESCO PHOENIX.
- BY YESCO PHOENIX:
1/2" Thick random cut cleft edge, varying sizes. Random mix of:
20% "Palo Verde" Sandstone by APG, 30% "Arizona Sunset" Sandstone by APG, 50% "Sunset" Sandstone by APG.

HALO-ILLUMINATED REVERSE CHANNEL MONUMENT DISPLAY
SCALE: 1/2" = 1'-0"



118-DR-1999#6
3/14/2007

YOUNG ELECTRIC SIGN COMPANY


6725 W. Chicago Street, Chandler, Az 85226-3335 (480) 449-3726



SITE PHOTO - SIGN LOCATION - LOOKING SOUTH - NTS



SITE PHOTO - LOOKING NORTH

 PHOENIX DIVISION 6725 W. Chicago Street, Chandler, Az 85226-3335 (480) 449-3726 ARIZONA CONTRACTOR LICENSE NO. #073322-007, AWNINGS NO. #073322, ELECTRICAL NO. #092800 YESCO. YOUNG ELECTRIC SIGN COMPANY	APPROVED BY:			REV. #	DATE	BY	REV. #	DATE	BY	FIRM NAME / PROJECT ADDRESS		60464-R9 <small>FILE DESIGN NUMBER</small>
	SALESPERSON			△	04/20/06	TALL	△	01/18/07	TALL	SAFEWAY 1849		
	CUSTOMER			△	07/18/06	TALL	△	02/14/07	TALL	32551 N. SCOTTSDALE ROAD		
	LANDLORD			△	08/10/06	LSD	△	02/16/07	TALL	SCOTTSDALE, ARIZONA		
	SALES MANAGER			△	08/30/06	TALL	△	06/11/07	TALL	<small>ORIGINAL DATE: As Noted</small> <small>ORIG. DESIGNER: J.Weacock</small>		
DATE:			△	12/28/06	TALL				<small>SALESPERSON KELLY CHIPMAN</small> <small>SCALE: 04/04/06</small>			

© This Drawing was created to assist you in visualizing our proposal. The original ideas herein are the property of Young Electric Sign Company. Permission to copy or revise this drawing can only be obtained thru a written agreement with Yesco. See your Sales Representative or call the nearest office of Young Electric Sign Co.

118-DR-1999#6
 2ND: 06/12/07

PLANTING PLAN NOTES

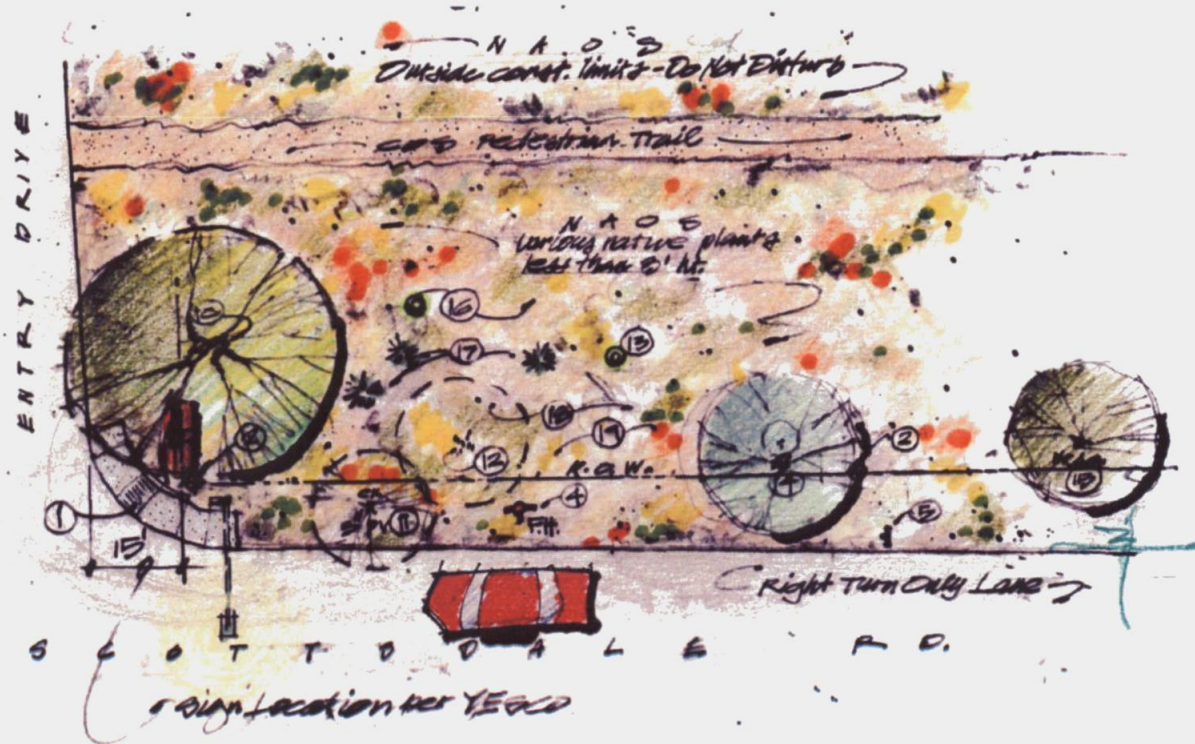
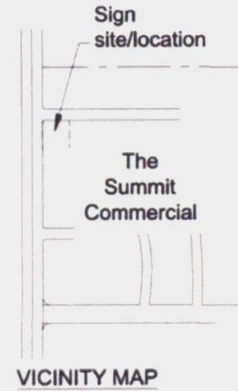
- ⑩ Existing Palo Verde, M.T., 45' spread, full to ground, good canopy overhangs entry road.
 - Retain. Remove dead, diseased, crossing limbs. Limb up/remove minor branches to 6' for better vehicular visibility.
- ⑪ Existing Palo Verde 3" cal., low forked double trunk, spindly.
 - Remove to increase turning traffic visibility.
- ⑫ Existing dead tree.
 - Remove due to possible future interference with traffic if toppled. Place dead tree within NAOS area for wildlife habitat if directed by City.
- ⑬ Existing Saguaro spear, 18' ht, healthy.
 - Retain. Do not damage during construction.
- ⑭ Existing Ironwood, M.T., 16" cal. 24' sp. good canopy.
 - Retain. Horticultural pruning. Remove minor branches for view to sign to avoid traffic indecision.
- ⑮ Existing Mesquite, 14" cal., to remain.
- ⑯ 2' ht Saguaro and Barrel Cactus.
 - Retain. Do not damage.
- ⑰ Three Chain Fruit Cholla less than 3' ht.
 - Retain. Do not damage.
- ⑱ Various native shrubs/bushes under 3' ht not NAOS protected.
 - Remove only as required for construction.
- ⑲ Existing 'Desert Floor' thruout the construction zone.
 - Minimize disturbance. Replicate existing conditions occurring along pedestrian trail upon construction completion. Seek City/Landscape Architect direction during site pre-construction meeting, during construction, and for final acceptance.

EXISTING CONDITIONS

- ① Existing handicapped ramp and walk.
- ② Existing 75' ROW stake.
- ③ Existing light standard.
- ④ Existing fire hydrant.
- ⑤ Existing 'Right Turn Only' traffic sign.

GENERAL NOTES:

- 1. Existing improvements to remain.
- 2. Review site conditions, design of proposed improvements and provide construction limits plan for approval at pre-construction site meeting.
- 3. Existing plant observations and photographs as of February third, 2007
- 4. No new planting and irrigation is prosed.
- 5. Route sign electrical to minimize damage to existing plants/natural conditions. Replace existing plants.



North Entrance @ Scottsdale Road
LANDSCAPE PLAN

Safeway Sign #1849
32551 N. Scottsdale Rd
@ The Summit
Scottsdale, AZ

Designed by : RJA
Drawn by : RJA
Approved by : MS
E # 207105.00

4 of 4

Scale: 1" = 20' 0"

0 5 10 20 40'

NORTH

817 N. CENTRAL AVENUE, PHOENIX, ARIZONA 85004, 602-462-9000

DATE: March 14, 2007

e group



Proposed Safeway
Sign Site

North Entrance @ Scottsdale Road
AERIAL PLAN

0 25' 50' 100' 200'
SCALE: 1" = 100' 0"



Safeway Sign #1849
32551 N. Scottsdale Rd
@ The Summit
Scottsdale, AZ

Designed by: RJA
Drawn by: RJA
Approved by: MS
e # 207105.00

1 of 4

817 N. CENTRAL AVENUE, PHOENIX, ARIZONA 85004, 602-462-9000

DATE: March 14, 2007

118-DR-190-016
2ND: 06/12/07