



## COMMISSION ACTION REPORT

Discussion and Possible Action to recommend approval of 8-GP-2011  
(CrackerJax)

**Agenda Item No.:** 8

**Meeting Date:** 10/05/11

**Staff Contact:** Brad Carr, AICP  
Senior Planner

**Phone:** (480) 312-7713

### ACTION

Discussion and Possible Action to recommend approval of 8-GP-2011, a Non-Major General Plan Amendment to the Greater Airpark Character Area Plan Future Land Use Map from Airpark Mixed Use (AMU) to Airpark Mixed Use-Residential (AMU-R) on a 32 +/- acre site located at 16001 N. Scottsdale Road.

### PURPOSE

To provide the Airport Advisory Commission information on the proposed Non-Major General Plan Amendment for a site located within the Airport Influence Area, as it relates to the 14 CFR Part 150 Noise Compatibility Study.

### KEY CONSIDERATIONS

- Proximity of proposed Airpark Mixed Use-Residential designation to Scottsdale Airport and other Airpark Mixed Use-Residential designated properties
- Proposed site located within the AC-1 area of the Airport Influence Zones
- Proposed site located outside of the 55 DNL noise contour
- Scottsdale Airport 14 CFR Part 150 Noise Compatibility Study Land Use Measure #2, #4, and #6 are triggered
- Airport Overlay Zone Matrix permits proposed use with conditions
- Potential increase of workforce housing in the Airpark
- Implementation of the General Plan's mixed-use land use designation for this area of the Airpark

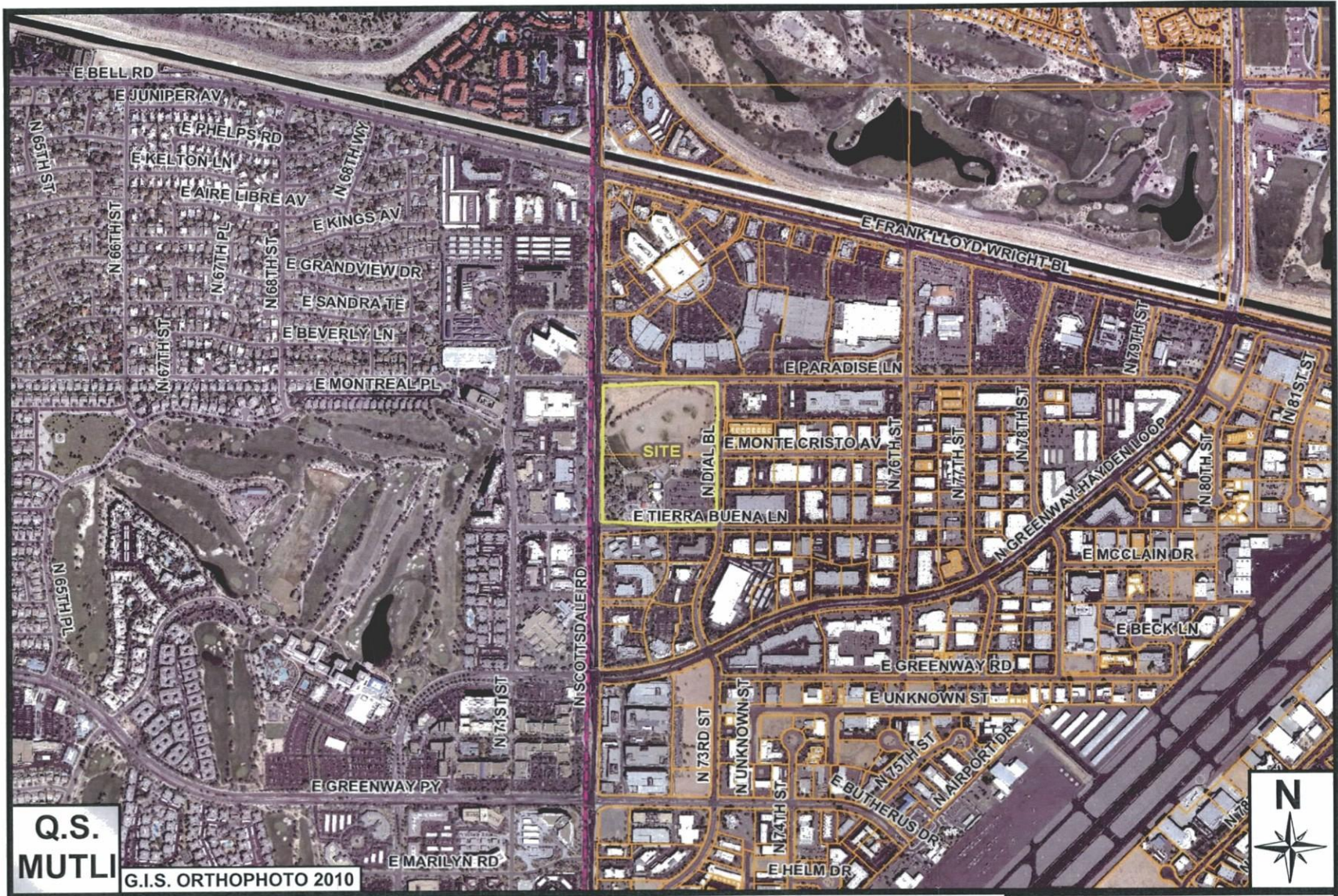
### OTHER RELATED POLICIES, REFERENCES

- 2010 Greater Airpark Character Area Plan
- Scottsdale General Plan 2001, as amended
- 2005 Scottsdale Airport 14 CFR Part 150 Noise Compatibility Study
- 2009 Airpark Economic Analysis and Forecast by Gruen Gruen + Associates

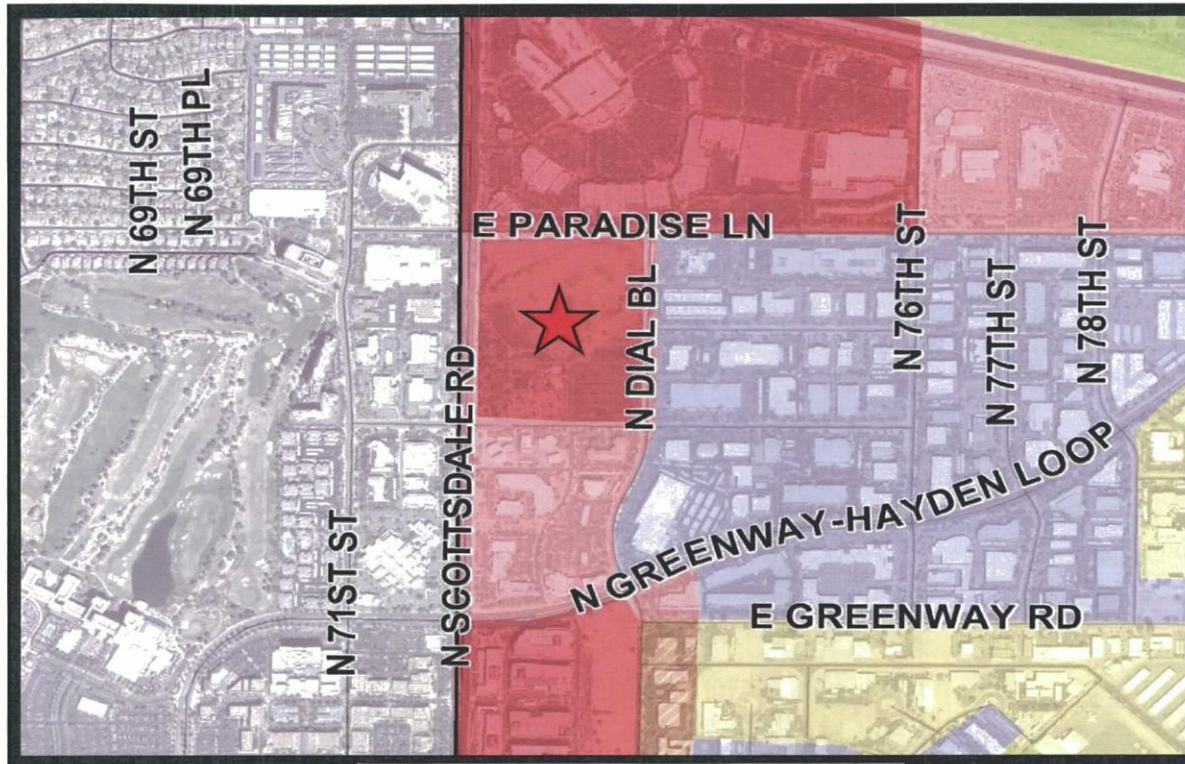
Attachment(s): 1. Vicinity Map  
2. Greater Airpark Character Area Plan Future Land Use Map - Proposed  
3. Part 150 Airport Influence Zones Map  
4. Part 150 Noise Contours Map  
5. Part 150 Helicopter Arrival/Departure Routes Map

Action Taken:

ATTACHMENT #1










# Greater Airpark Character Area Plan - proposed



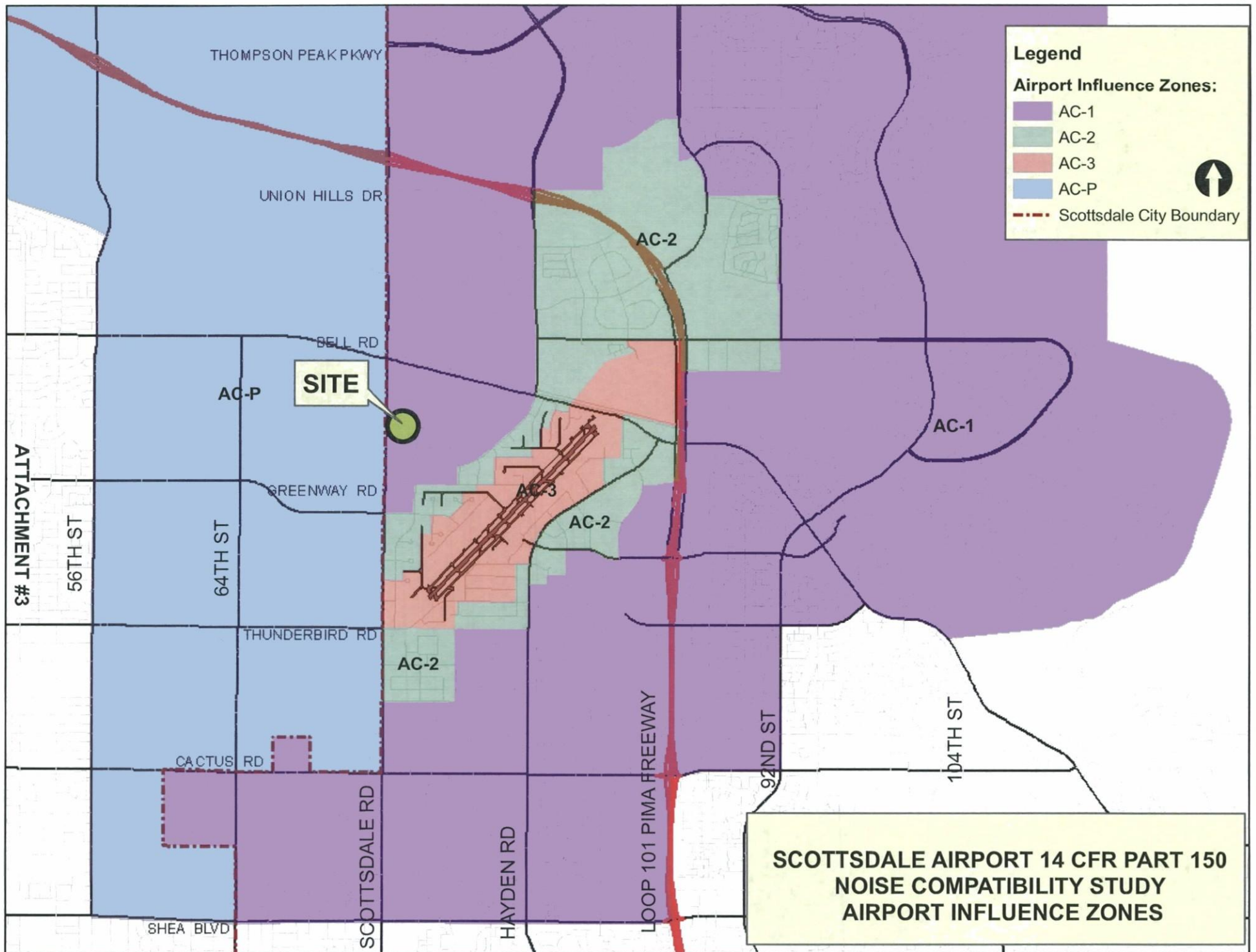
ATTACHMENT #2

**Legend**

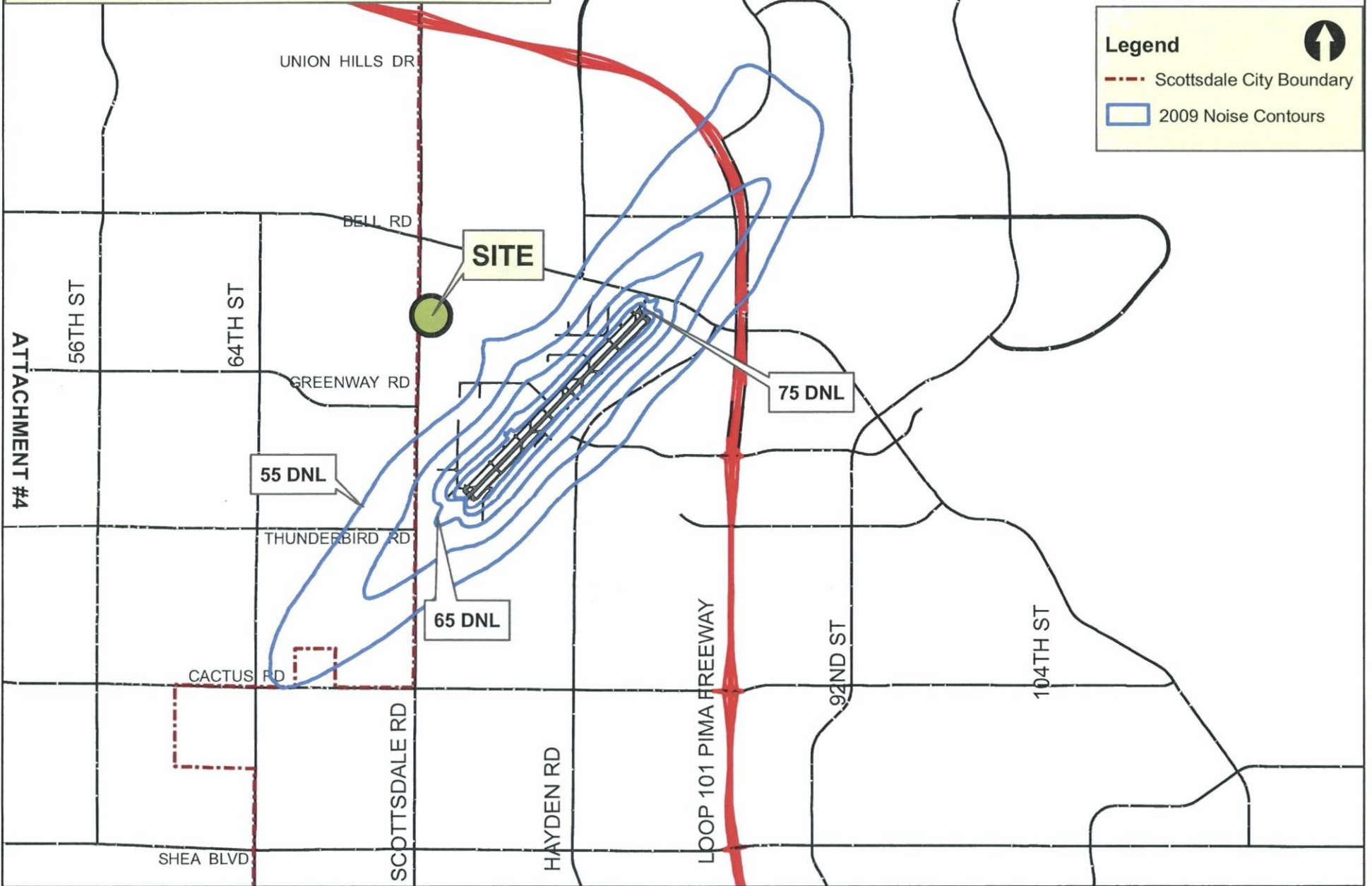
-  Greater Airpark Study Boundary
- Future Land Uses:**
-  Airpark Mixed-Use Residential [AMU-R]
-  Airpark Mixed-Use [AMU]
-  Regional Tourism [RT]
-  Employment [EMP]
-  Open Space [O-S]
-  Aviation/Airpark Mixed-Use [AV/AMU]



8-GP-2011



**SCOTTSDALE AIRPORT 14 CFR PART 150  
NOISE COMPATIBILITY STUDY  
2009 NOISE CONTOURS**



**Legend**

- Scottsdale City Boundary
- 2009 Noise Contours



ATTACHMENT #4

