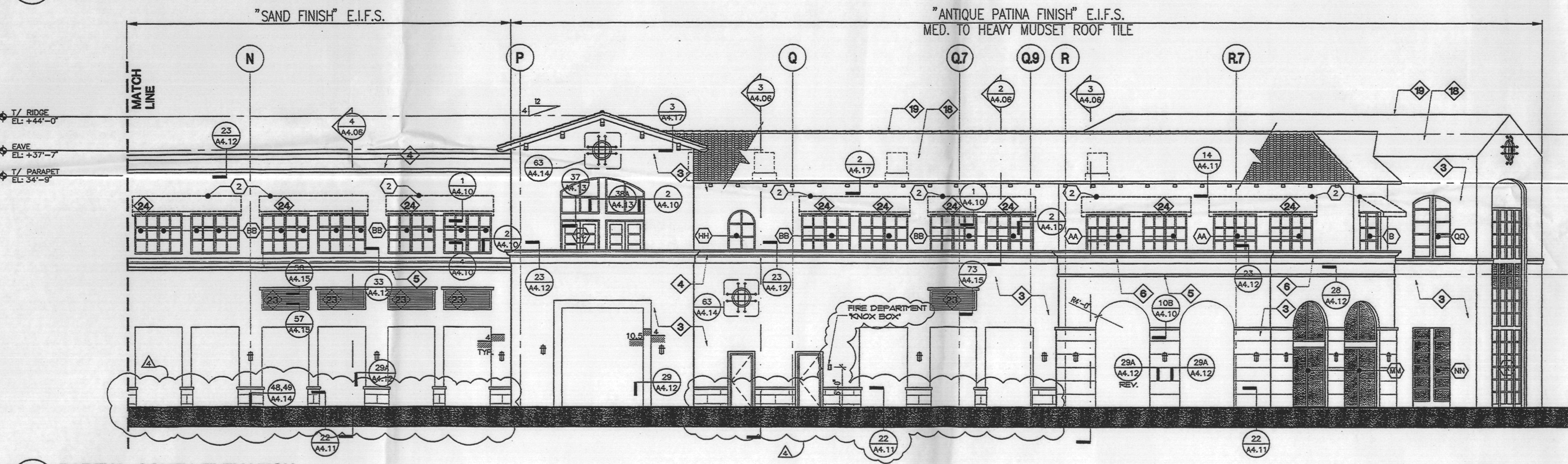
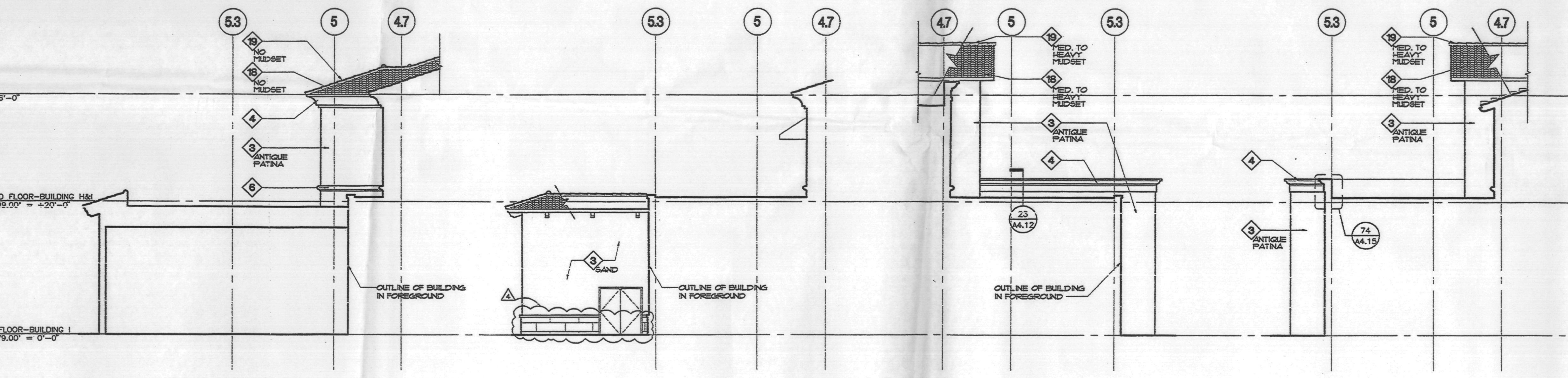


1 PARTIAL SOUTH ELEVATION
SCALE: 1/8" = 1'-0"



2 PARTIAL SOUTH ELEVATION
SCALE: 1/8" = 1'-0"



3 PARTIAL ELEVATION
SCALE: 1/8" = 1'-0"
(EAST END OF PROJECTING BAY @ LINE 1.5)

4 PARTIAL ELEVATION
SCALE: 1/8" = 1'-0"
(EAST END OF WALL RETURN/LOADING - BUILDING 1)

5 PARTIAL ELEVATION
SCALE: 1/8" = 1'-0"
(WEST END OF WALL RETURN @ SERV. CORRIDOR - LINE 'P')

6 PARTIAL ELEVATION
SCALE: 1/8" = 1'-0"
(EAST END OF WALL RETURN @ SERV. CORRIDOR - LINE 'P.5')

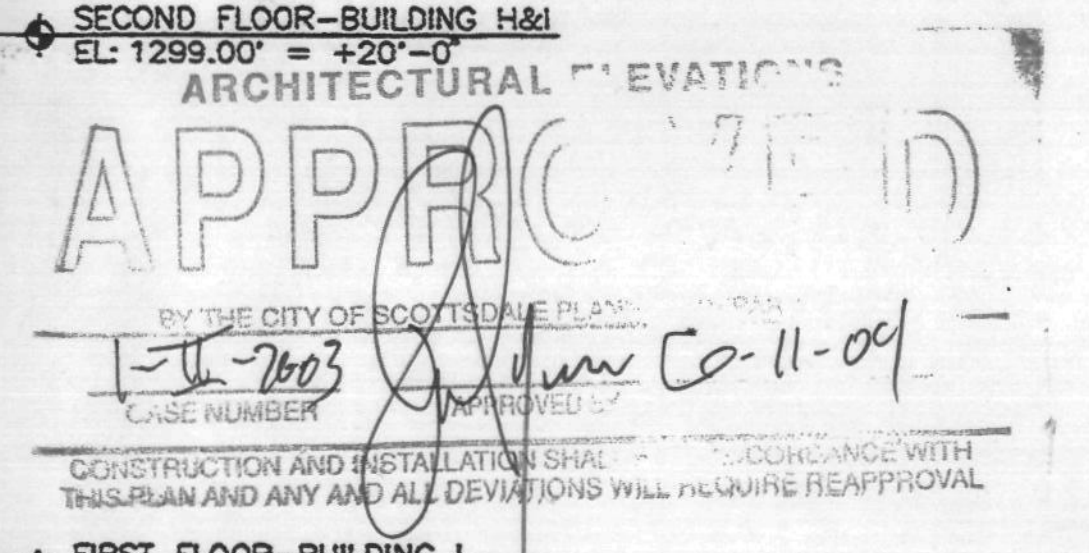
7 PARTIAL ELEVATION
SCALE: 1/8" = 1'-0"
(WEST END OF PROJECTING BAY @ LINE 'R')

MATERIALS & FINISHES

1. DECORATIVE WROUGHT IRON
2. METAL CONNECTIONS & TRIM
3. EXTERIOR INSULATION & FINISH SYSTEM (EIFS) REFER TO ELEVATIONS FOR SPECIFICATIONS OF SPECIFIED COLORS & FINISHES
4. EIFS CORNICE
5. EIFS TRIM
6. EIFS MOLDING
7. EIFS GILL
8. PRECAST STONE CORNICE
9. PRECAST STONE TRIM
10. PRECAST STONE MOLDING
11. PRECAST STONE BASE
12. PRECAST STONE COLUMN
13. SANDSTONE VENEER PANEL/TILE
14. BRICK COLUMN COVER
15. WOOD COLUMN COVER W/ STAINED FINISH
16. WOOD TRELLIS
17. WOOD TRUSS
18. CLAY "MISSION" ROOF TILE - ICSO REPORT #4300
19. CLAY "MISSION" RIDGE TILE / CAP
20. PREFINISHED ALUMINUM STOREFRONT SYSTEM
21. PREFINISHED ALUMINUM WINDOW UNITS
22. (NOT USED)
23. PREFINISHED METAL LOUVER
24. "TEXTILE" AWNING
25. TENANT SIGNAGE / SIGNAGE BAND
26. LIGHT FIXTURE TYPE #1
27. LIGHT FIXTURE TYPE #2
28. LIGHT FIXTURE TYPE #3
29. LIGHT FIXTURE TYPE #4

GENERAL NOTES

1. REFER TO DRAWINGS AT THE END OF THIS CHAPTER 3 SERIES FOR ENLARGED WINDOW TYPES AND ELEVATIONS.
2. GROUND FLOOR STOREFRONT: PREFINISHED ALUMINUM STOREFRONT SYSTEM W/ CLEAR MONOCHROME GLASS PANELS. SEE A-2 SERIES DRAWINGS AND SHEETS A4.05, A4.09 FOR TEMPERED GLASS LOCATIONS.
3. SECOND FLOOR WINDOWS & ABOVE: PREFINISHED ALUMINUM WINDOW UNITS W/ TRUE MOUNTING & INSULATED GLASS PANELS - 1/2" CLEAR GLASS WITH LOW "E" COATING ON #2 SURFACE - 1/2" AIRSPACE.
4. ELEVATIONS INDICATE EXTENT OF EXTERIOR INSULATION AND FINISH SYSTEM (EIFS) COLOR/TEXTURE (ANTIQUE PATINA OR SAND). COORDINATE DETAILED LIMITS OF FINISH AND COLOR WITH ARCHITECT.
5. ALL SIGNAGE REQUIRES SEPARATE PERMIT AND APPROVAL.



New
6-11-09

SCB
Solomon Cordwell Buenz & Associates Inc.
Architecture Planning Interior Design

625 North Michigan Avenue
Suite 800
Chicago, Illinois 60611
tel 312 696 1100 fax 312 696 1200

H&S International LLC
Sung-Hui Architect
17765 N. PACSETTER HWY
USCOVER HOUSE
SUITE 200
SCOTTSDALE, ARIZONA 85255-5491
480-488-8888
480-665-2298 (FAX)

BROOKS ENGINEERS & SURVEYORS INC.
4602 E. ELWOOD STREET #16
PHOENIX, ARIZONA 85040
(PHONE) (602) 437-3733
(FAX) (480) 898-0204

CARUSO TURLEY SCOTT INC.
consulting structural engineers
2702 NORTH 44TH STREET SUITE 200
PHOENIX, ARIZONA 85008 (602) 912-9129 (912-9390 FAX)

PETERSON ASSOCIATES
CONSULTING ENGINEERS INC.
2201 N. DeWitt Street
Suite 200
Phoenix, Arizona 85020
(602) 942-6118
FACSIMILE (602) 942-3307
www.petersoninc.com
Job No. -

Floor ASSOCIATES
Landscape Architecture
1425 North First Street
Second Floor
Phoenix, Arizona 85004
Phone 602.462.1425
Fax 602.462.1427

© 2004 Solomon Cordwell Buenz & Associates, Inc.

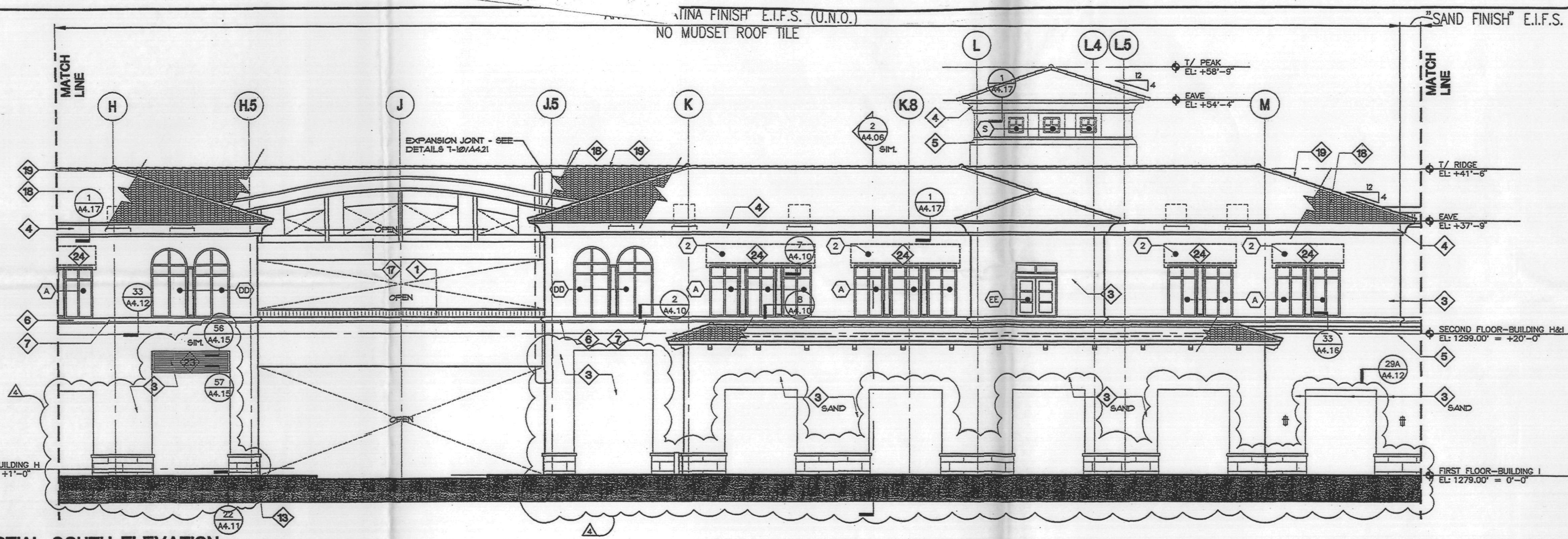
NO.	DATE	DESCRIPTION
06.11.04		PERMIT CORRECTIONS (FIRE DEPT)
06.21.04		PERMIT REVIEW
06.21.04		DESIGN CLARIFICATIONS
06.03.04		ISSUE FOR BID - CORE & SHELL
04.15.04		ISSUE FOR BID - STEEL
04.05.04		ISSUE FOR PERMIT - PHASE 1A
01.09.04		100% DESIGN DEVELOPMENT - PHASE 1A
11.17.03		100% SCHEMATIC DESIGN

RECORD

SCOTTSDALE WATERFRONT
Scottsdale, Arizona

Phase 1A
SOUTH BUILDING ELEVATION
RETAIL 'H' - 1'

Scale: 1/8" = 1'-0"
Sheet Number: **A3.04**
Drawn By: SCB
Project Number: **2003014**



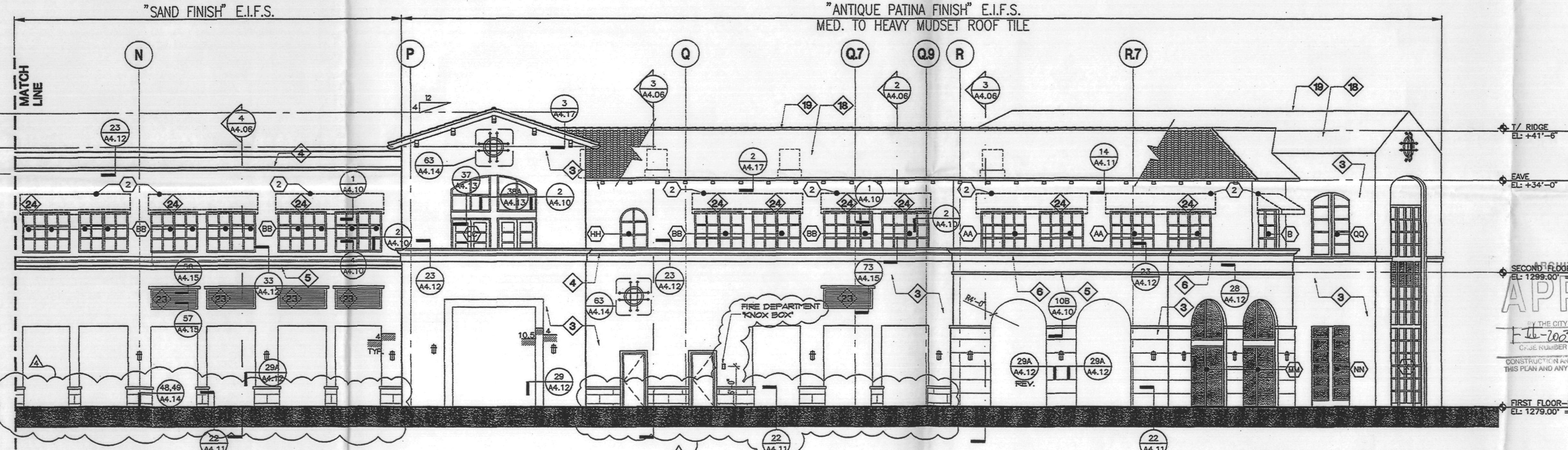
MATERIALS & FINISHES

- 1 - DECORATIVE WROUGHT IRON
- 2 - METAL CONNECTIONS & TRIM
- 3 - EXTERIOR INSULATION & FINISH SYSTEM (E.I.F.S.) REFER TO ELEVATIONS FOR LOCATIONS OF SPECIFIED COLORS & FINISHES
- 4 - E.I.F.S. CORNICE
- 5 - E.I.F.S. TRIM
- 6 - E.I.F.S. MOLDING
- 7 - E.I.F.S. SILL
- 8 - PRECAST STONE CORNICE
- 9 - PRECAST STONE TRIM
- 10 - PRECAST STONE MOLDING
- 11 - PRECAST STONE BASE
- 12 - PRECAST STONE COLUMN
- 13 - SANDSTONE VENEER PANEL/STILE
- 14 - BRICK COLUMN COVER
- 15 - WOOD COLUMN COVER W/ STAINED FINISHES
- 16 - WOOD TRUSSES
- 17 - WOOD TRUSS
- 18 - CLAY "MISSION" ROOF TILE - CGO REPORT #4000
- 19 - CLAY "MISSION" RIDGE TILE / CAP
- 20 - PREFINISHED ALUMINUM WINDOW SYSTEM
- 21 - PREFINISHED ALUMINUM STOREFRONT SYSTEM
- 22 - (NOT USED)
- 23 - PREFINISHED METAL LOUVER
- 24 - "TEXTILE" AWNING
- 25 - TENANT SIGNAGE / SIGNAGE BAND
- 26 - LIGHT FIXTURE TYPE #1
- 27 - LIGHT FIXTURE TYPE #2
- 28 - LIGHT FIXTURE TYPE #3
- 29 - LIGHT FIXTURE TYPE #4

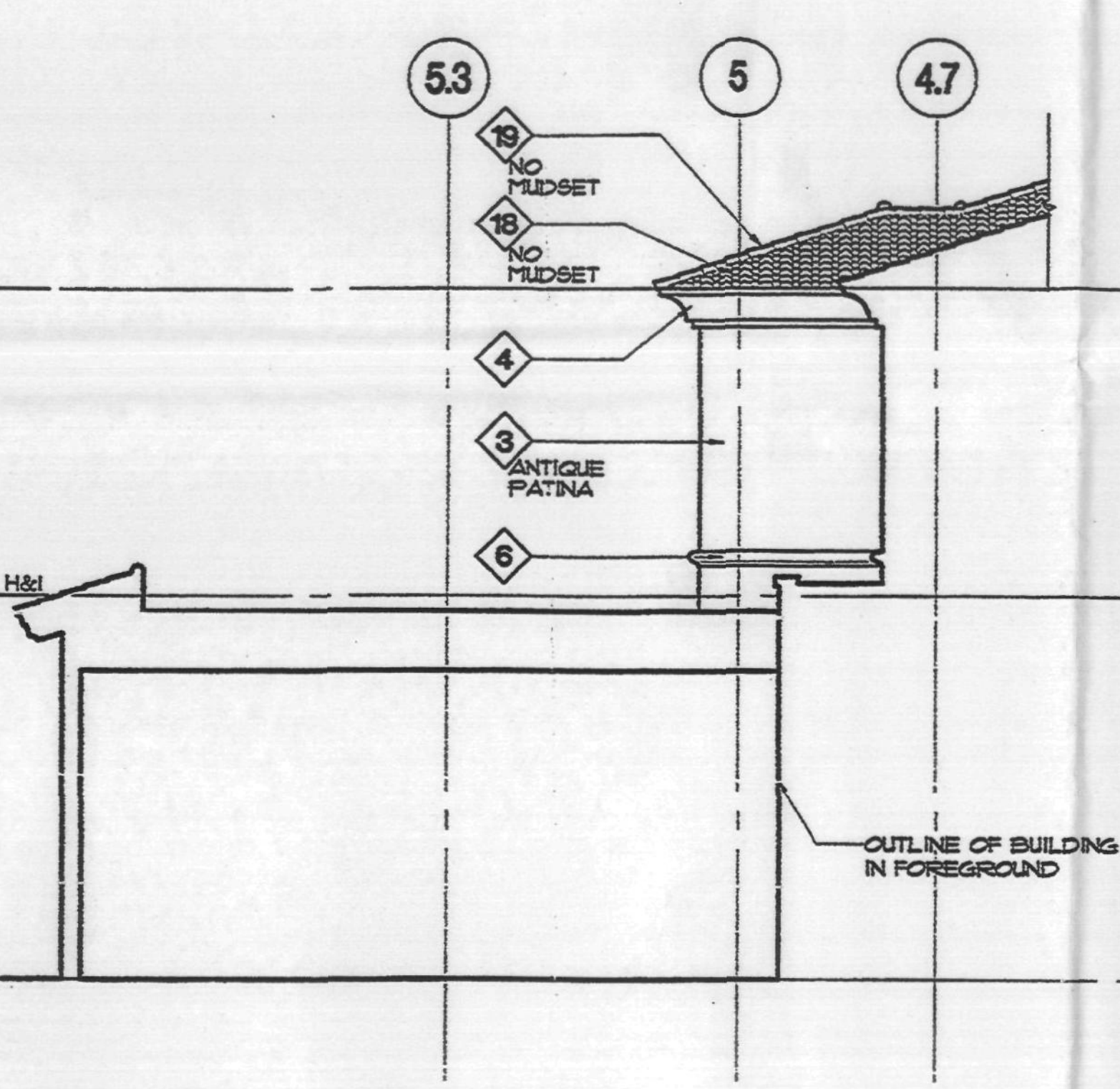
GENERAL NOTES

1. REFER TO DRAWINGS AT THE END OF THE CHAPTER 3 SERIES FOR ENLARGED WINDOW TYPES AND ELEVATIONS.
2. GROUND FLOOR STOREFRONT: PREFINISHED ALUMINUM STOREFRONT SYSTEM W/ CLEAR MICHOLTYNG GLASS PANELS. SEE ARCH SERIES DRAWINGS AND SHEETS A3.01/A3.02 FOR TEMPERED GLASS LOCATIONS.
3. SECOND FLOOR WINDOWS & ABOVE: PREFINISHED ALUMINUM WINDOW UNITS W/ TINTED MICHOLTYNG & INSULATED GLASS PANELS - 1/2" CLEAR GLASS WITH LOW "E" COATING ON SURFACE - 1/2" AIRSPACE
4. ELEVATIONS INDICATE EXTENT OF EXTERIOR INSULATION AND FINISH SYSTEM (E.I.F.S.) OUTLINE PATINA OR "SAND", COORDINATE DETAILED LIMITS OF FINISH AND COLOR WITH ARCHITECT.
5. ALL SIGNAGE REQUIRES SEPARATE PERMIT AND APPROVAL.

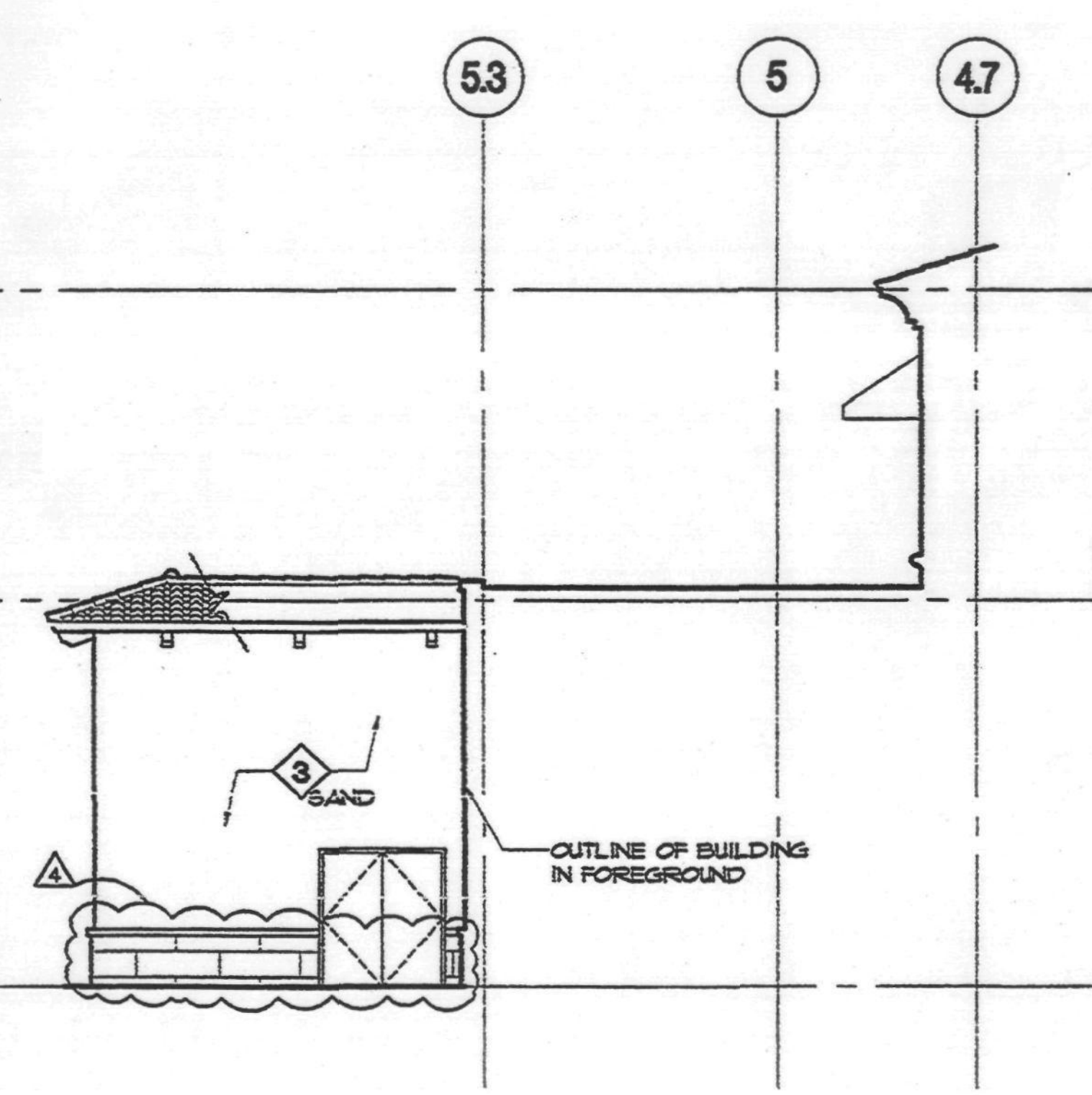
1 PARTIAL SOUTH ELEVATION
SCALE: 1/8" = 1'-0"



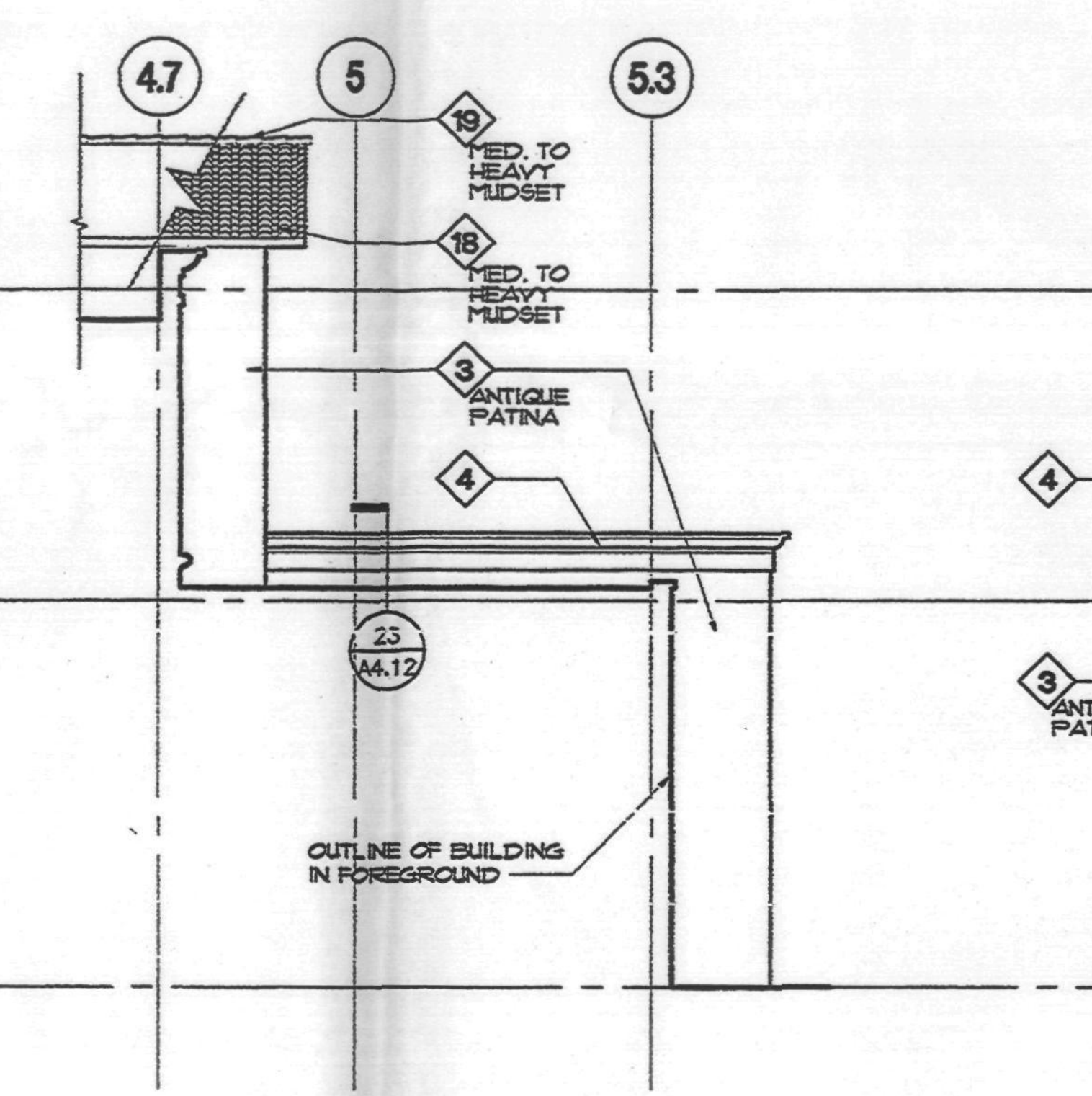
2 PARTIAL SOUTH ELEVATION
SCALE: 1/8" = 1'-0"



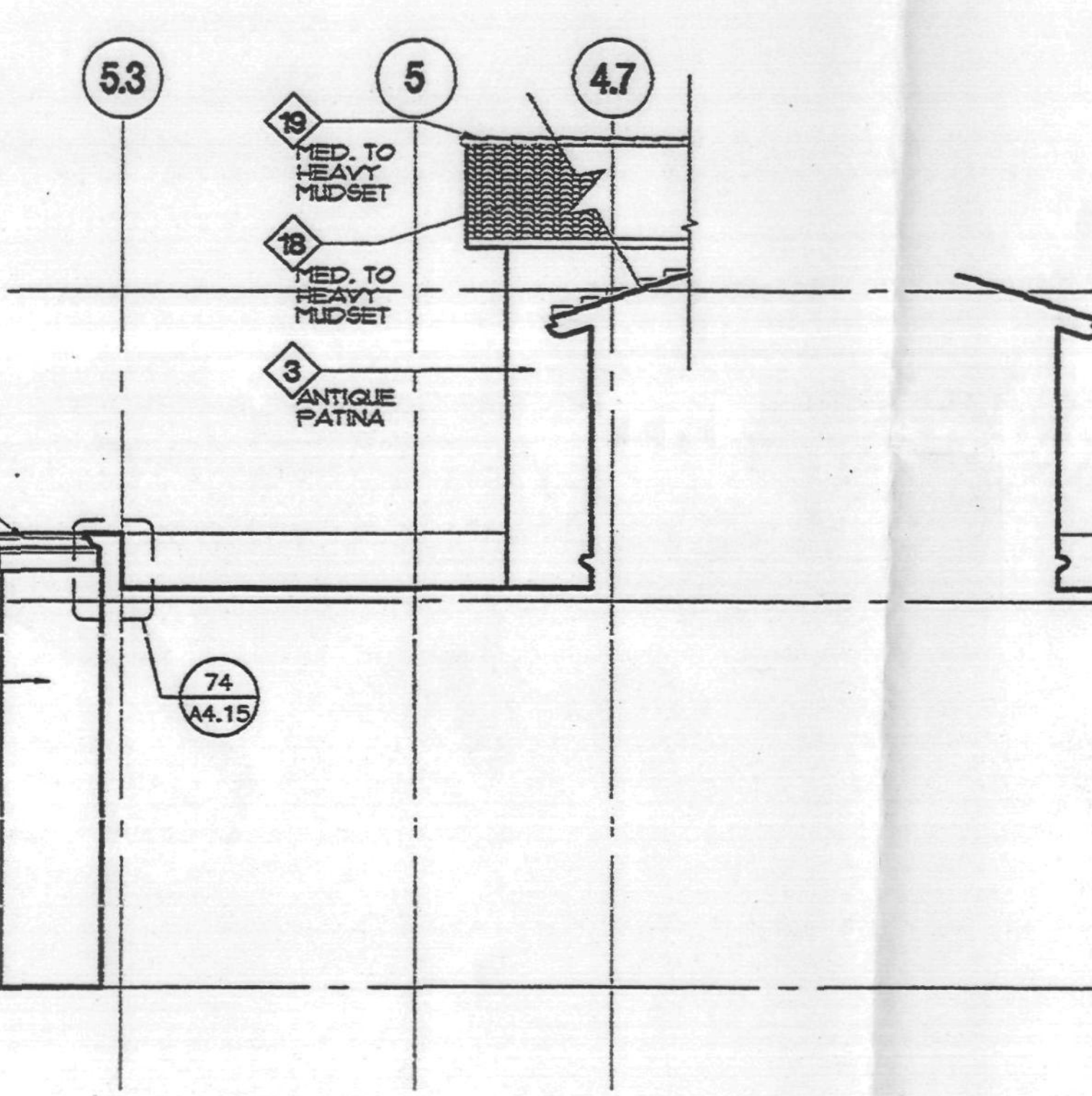
3 PARTIAL ELEVATION
SCALE: 1/8" = 1'-0"
(EAST END OF PROJECTING BAY @ LINE 'L5')



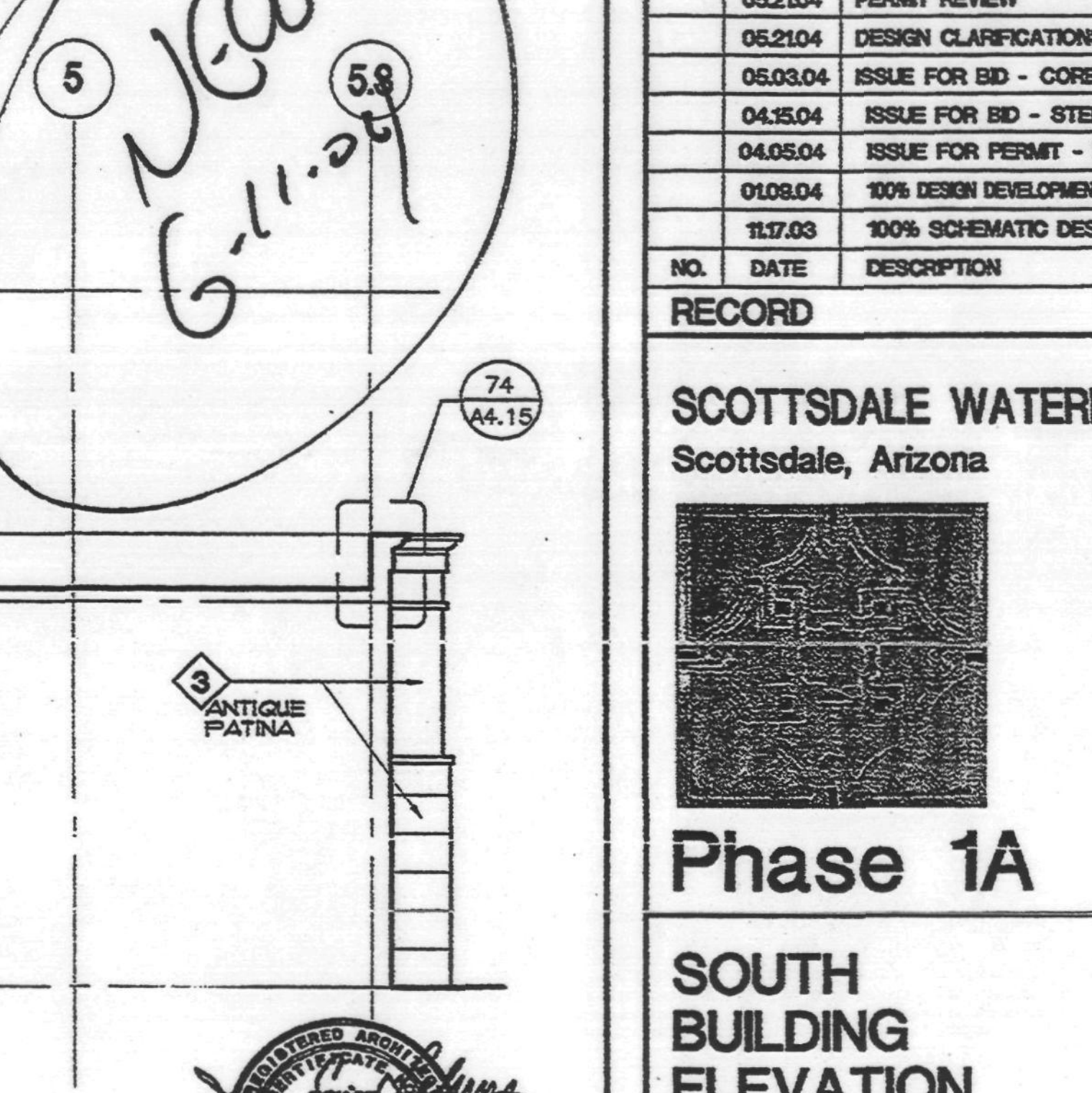
4 PARTIAL ELEVATION
SCALE: 1/8" = 1'-0"
(EAST END OF WALL RETURN @ SERV. CORRIDOR - BUILDING '1')



5 PARTIAL ELEVATION
SCALE: 1/8" = 1'-0"
(WEST END OF WALL RETURN @ SERV. CORRIDOR - LINE 'P')



6 PARTIAL ELEVATION
SCALE: 1/8" = 1'-0"
(EAST END OF WALL RETURN @ SERV. CORRIDOR - LINE 'P')



7 PARTIAL ELEVATION
SCALE: 1/8" = 1'-0"
(WEST END OF PROJECTING BAY @ LINE 'R')

SCB
Solomon Cordwell Buenz & Associates Inc.
Architectural Planning Interior Design
625 North Michigan Avenue
Suite 900
Chicago, Illinois 60611
tel 312 886 1100 fax 312 886 1200

H&S Interiors LLC
Bing Hu Architect
1778 N. PACIFIC AVENUE
DISCOVER HOUSE
SUITE 600
SCOTTSDALE, ARIZONA 85255-6401
480-958-9093
480-855-2288 (FAX)

BROOKS ENGINEERS & SURVEYORS INC.
4802 E. ELWOOD STREET #18
PHOENIX, ARIZONA 85040
(PHONE) (602) 437-3733
(FAX) (480) 858-0204

CAUSO-TURLEY SCOTT-INC.
consulting structural engineers
2702 NORTH 44TH STREET SUITE 200
PHOENIX, ARIZONA 85008 (602) 912-9120 (912-9390 FAX)

7201 N. DeSoto Ave. Suite 200
Phoenix, Arizona 85020
(602) 942-0710
FAX: (602) 942-2007
www.petersonassociates.com
Peterson Associates
CONSULTING ENGINEERS INC.

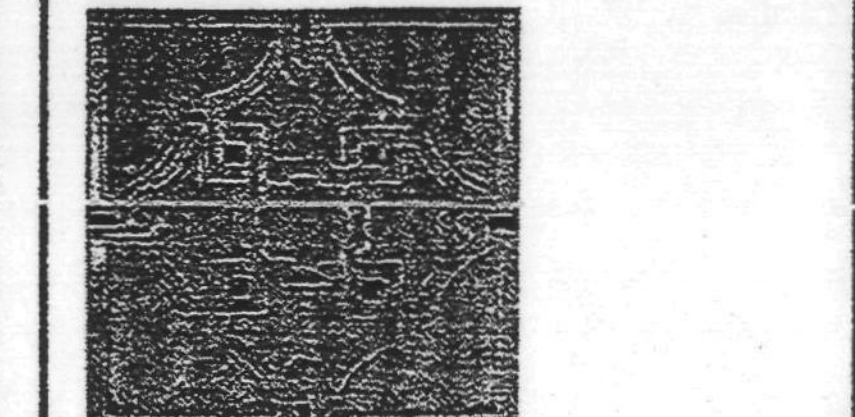
ALL CONCEPTS, DESIGN, AND DATA INDICATED ON THESE DRAWINGS ARE THE SOLE PROPERTY OF THE PETERSON ASSOCIATES, ENGINEERS, INC. AND SHALL NOT BE USED FOR ANY OTHER PURPOSE THAN ORIGINALLY INTENDED WITHOUT THE WRITTEN PERMISSION OF THE ENGINEER.

Floor ASSOCIATES
Landscape Architecture
1425 North First Street
Second Floor
Phoenix, Arizona 85004
Phone: 602.462.1425
Fax: 602.462.1427

© 2004 Solomon Cordwell Buenz & Associates, Inc.

NO.	DATE	DESCRIPTION
06.11.04		PERMIT CORRECTIONS (FIRE DEPT)
05.21.04		PERMIT REVIEW
05.21.04		DESIGN CLARIFICATIONS
05.03.04		ISSUE FOR BID - CORE & SHELL
04.15.04		ISSUE FOR BID - STEEL
04.05.04		ISSUE FOR PERMIT - PHASE 1A
01.08.04		100% DESIGN DEVELOPMENT - PHASE 1A
11.17.03		100% SCHEMATIC DESIGN

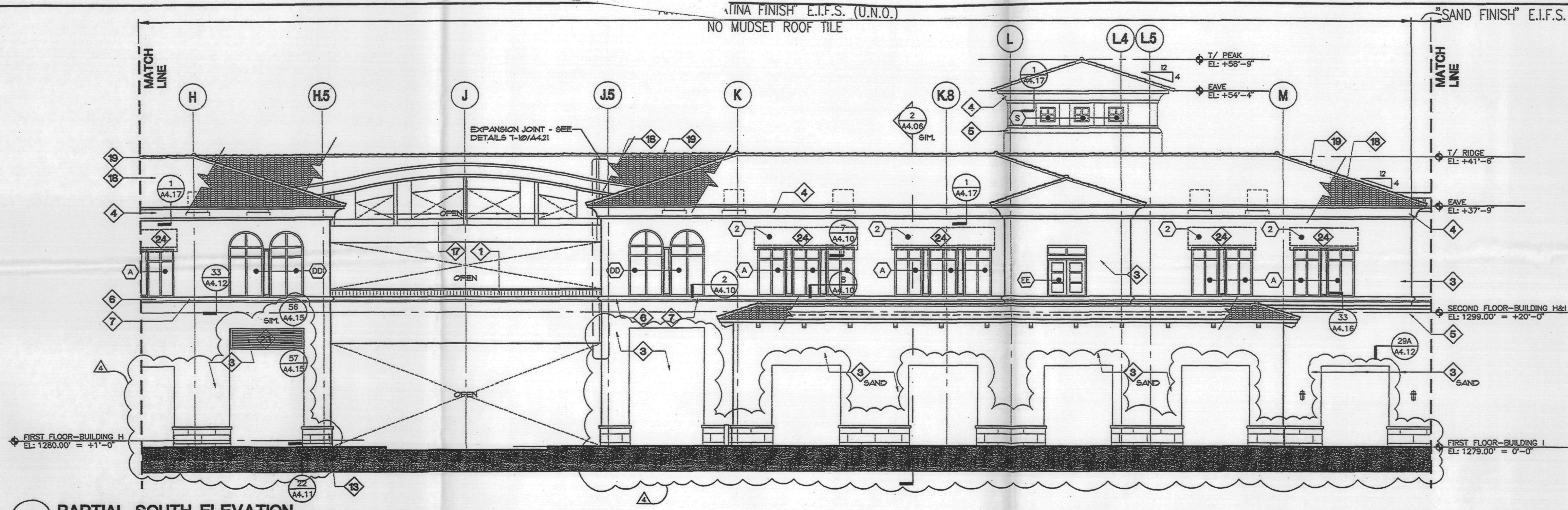
SCOTTSDALE WATERFRONT
Scottsdale, Arizona



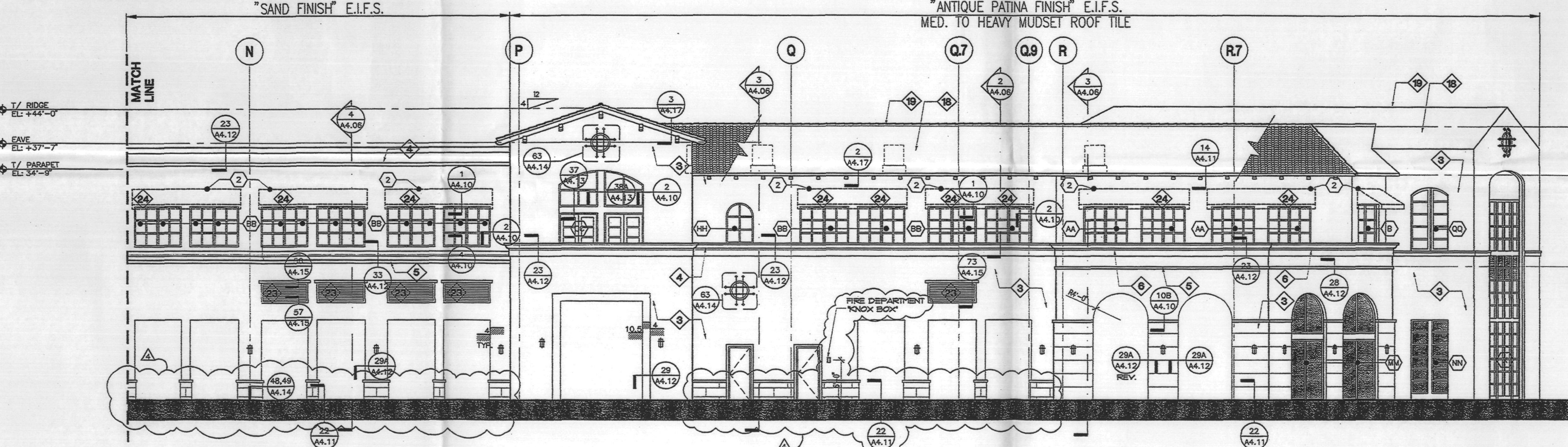
Phase 1A

SOUTH BUILDING ELEVATION RETAIL 'H - I'

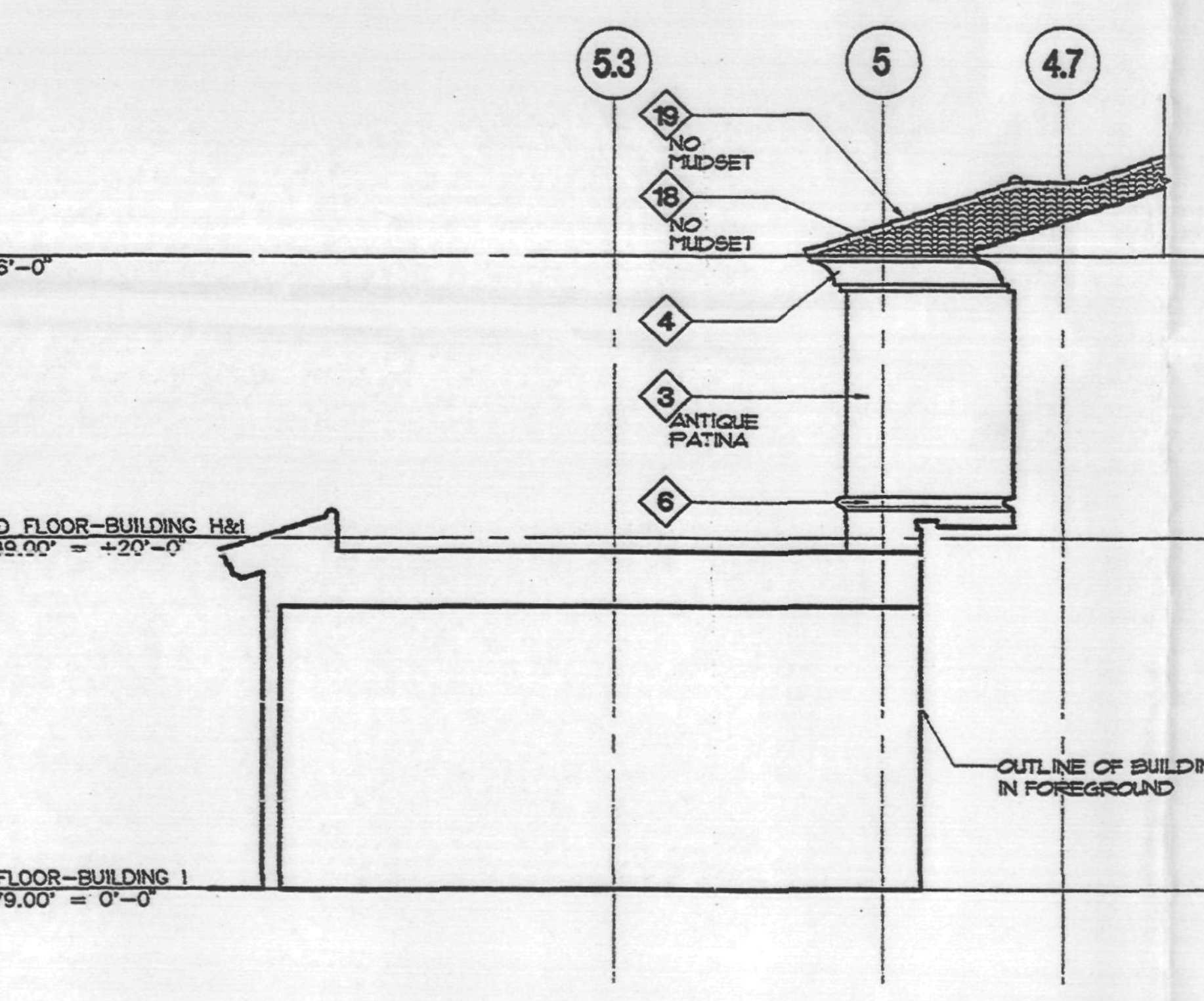
Scale: 1/8" = 1'-0"
Sheet Number:
Drawn By: SCB
Project Number: **A3.04**
2003014



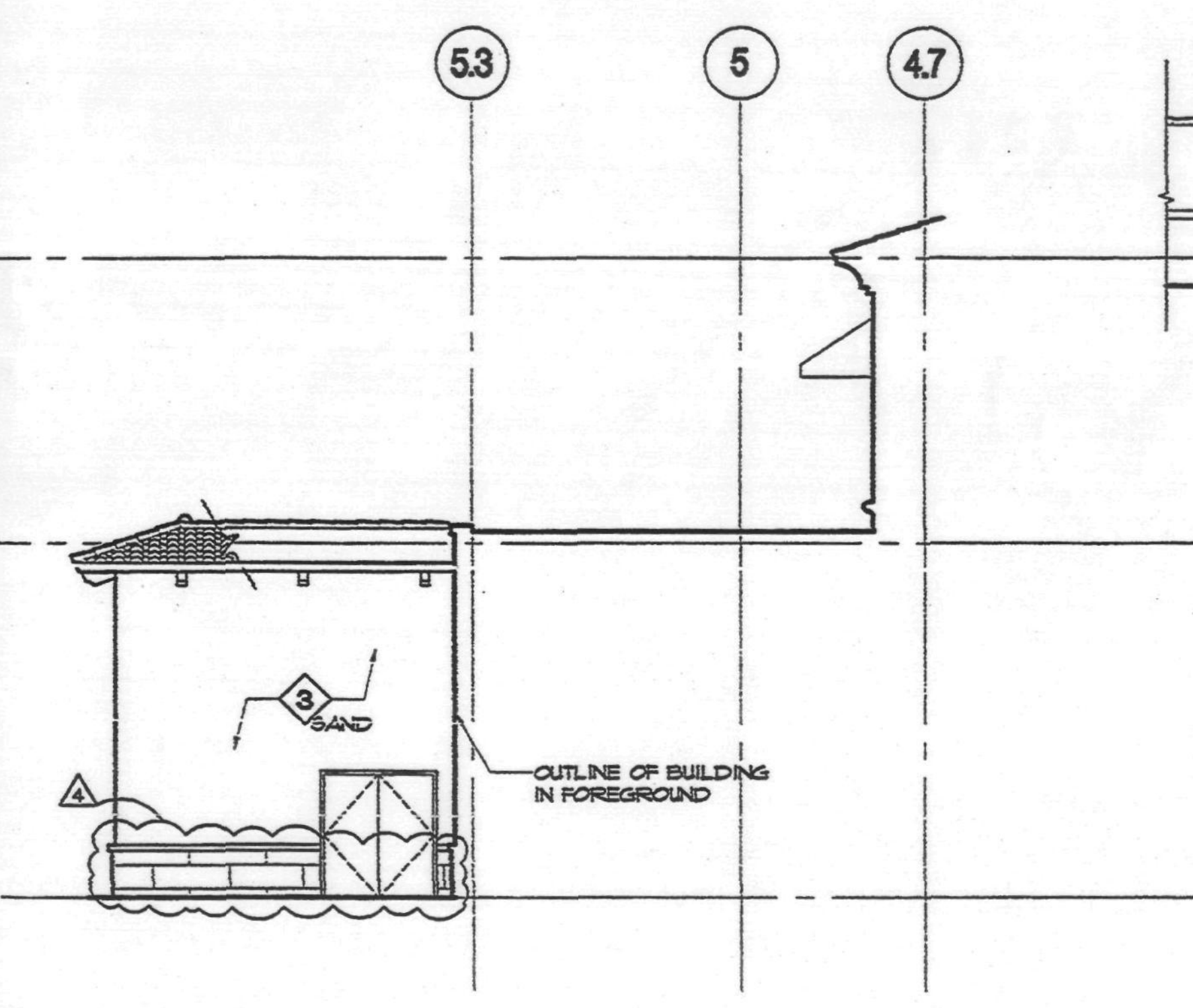
1 PARTIAL SOUTH ELEVATION
SCALE: 1/8" = 1'-0"



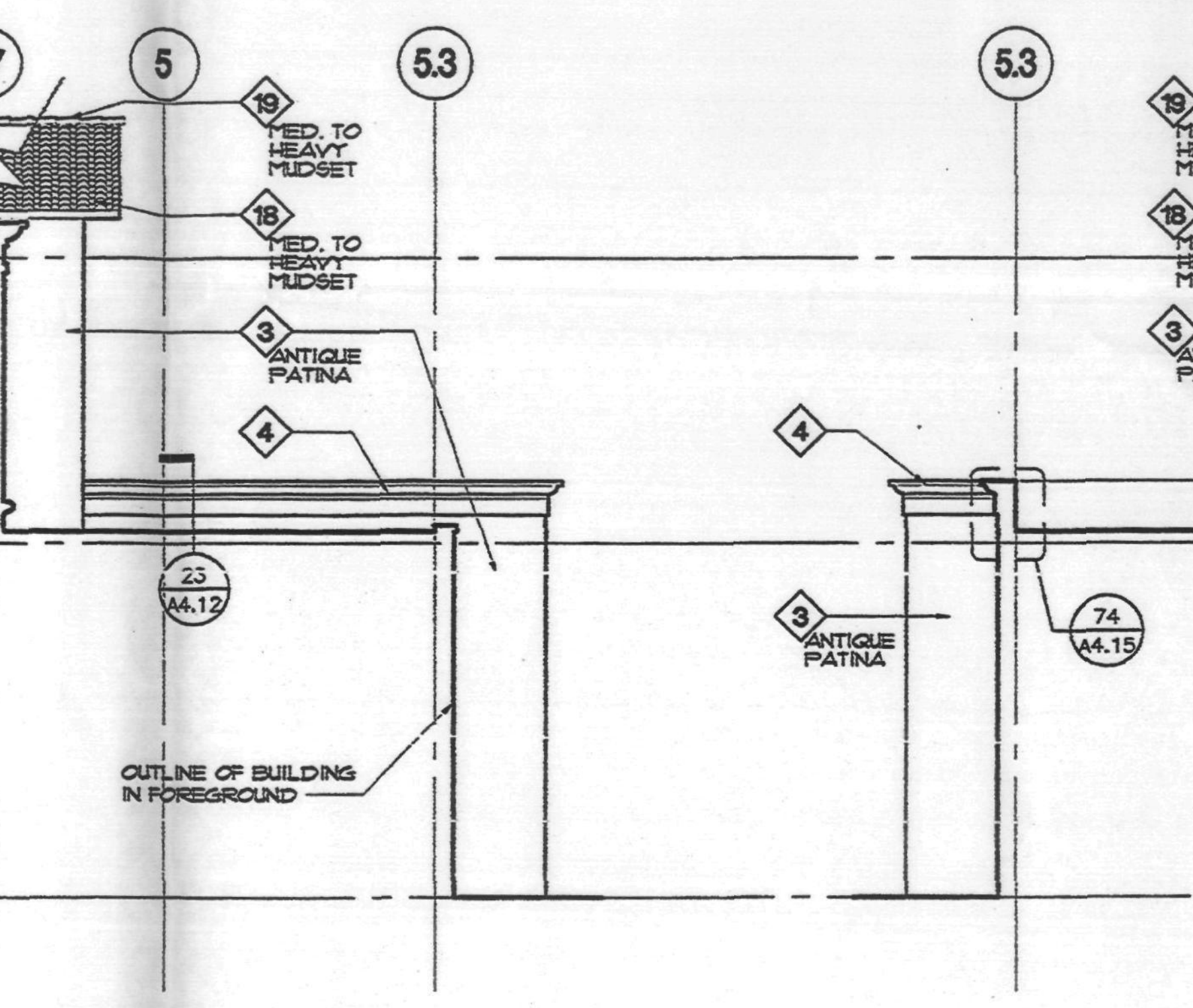
2 PARTIAL SOUTH ELEVATION
SCALE: 1/8" = 1'-0"



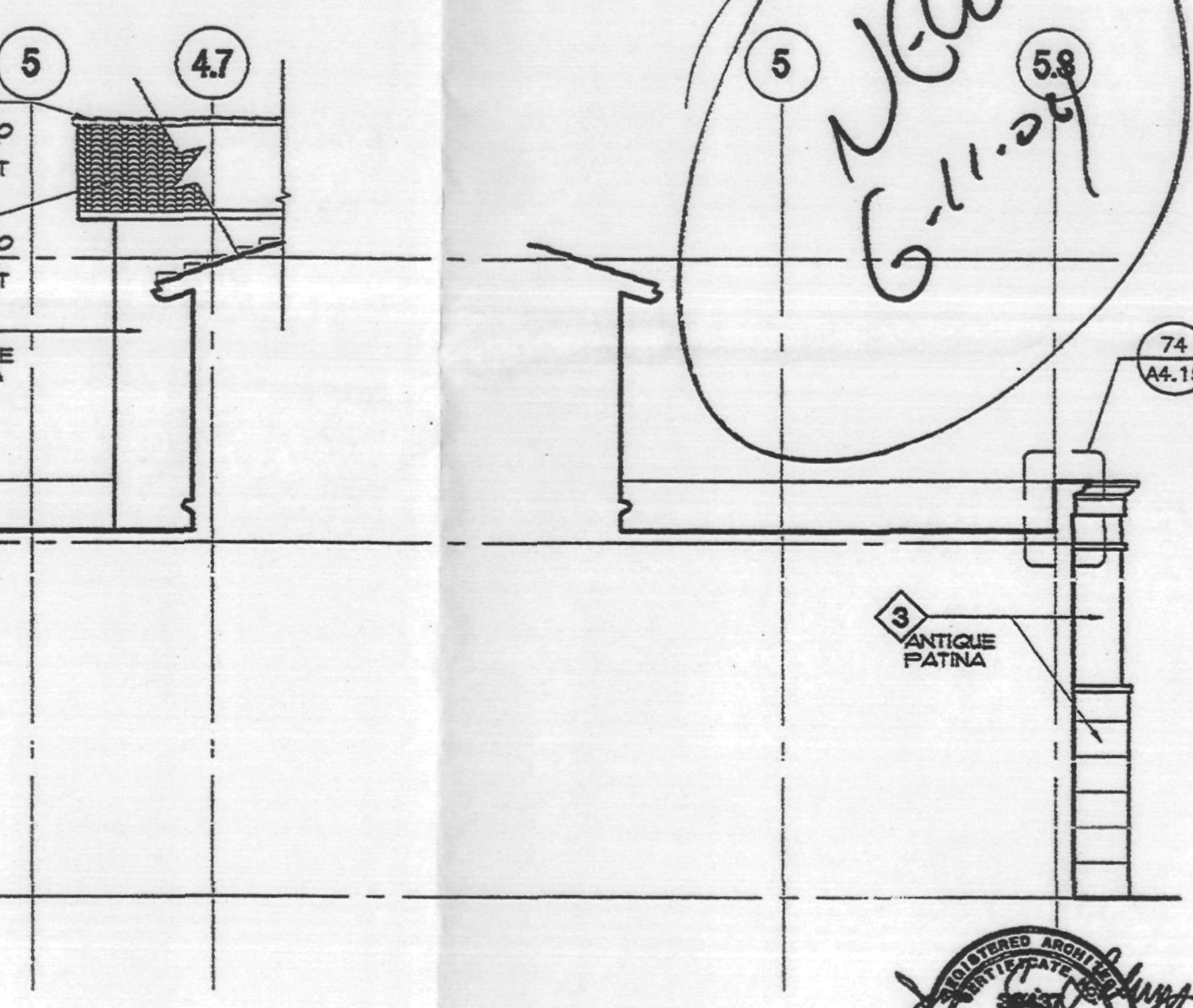
3 PARTIAL ELEVATION
SCALE: 1/8" = 1'-0"
(EAST END OF PROJECTING BAY @ LINE L5)



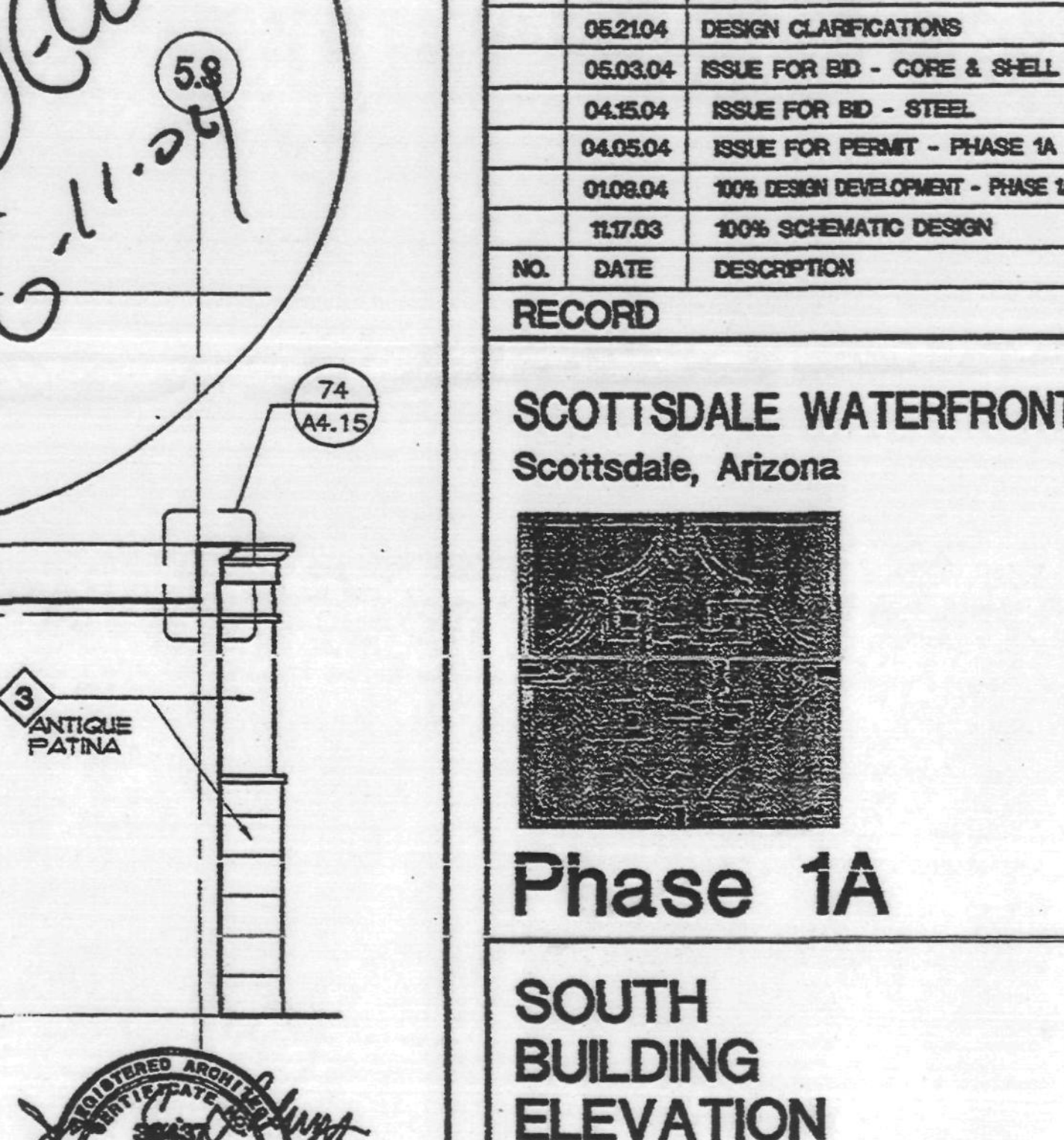
4 PARTIAL ELEVATION
SCALE: 1/8" = 1'-0"
(EAST END OF WALL RETURN/LOADING - BUILDING 1)



5 PARTIAL ELEVATION
SCALE: 1/8" = 1'-0"
(WEST END OF WALL RETURN @ SERV. CORRIDOR - LINE P)



6 PARTIAL ELEVATION
SCALE: 1/8" = 1'-0"
(EAST END OF WALL RETURN @ SERV. CORRIDOR - LINE P)



7 PARTIAL ELEVATION
SCALE: 1/8" = 1'-0"
(WEST END OF PROJECTING BAY @ LINE T)

- MATERIALS & FINISHES**
- 1- DECORATIVE WROUGHT IRON
 - 2- METAL CONNECTIONS & TRIM
 - 3- EXTERIOR INSULATION & FINISH SYSTEM (EIFS) REFER TO ELEVATIONS FOR LOCATIONS OF SPECIFIED COLORS & FINISHES
 - 4- EIFS CORNICE
 - 5- EIFS TRIM
 - 6- EIFS MOLDING
 - 7- EIFS SILL
 - 8- PRECAST STONE CORNICE
 - 9- PRECAST STONE TRIM
 - 10- PRECAST STONE MOLDING
 - 11- PRECAST STONE BASE
 - 12- PRECAST STONE COLUMN
 - 13- SANDSTONE VENEER PANEL/TILE
 - 14- BRICK COLUMN COVER
 - 15- WOOD COLUMN COVER W/ STAINED FINISH
 - 16- WOOD TRUSS
 - 17- WOOD TRUSS
 - 18- CLAY "MISSION" ROOF TILE - CSO REPORT #4000
 - 19- CLAY "MISSION" ROOF TILE / CAP
 - 20- PREFINISHED ALUMINUM STOREFRONT SYSTEM
 - 21- PREFINISHED ALUMINUM WINDOW UNITS
 - 22- (NOT USED)
 - 23- PREFINISHED METAL LOUVER
 - 24- "TICKLE" AWNING
 - 25- TENANT SIGNAGE / SIGNAGE BAND
 - 26- LIGHT FIXTURE TYPE #1
 - 27- LIGHT FIXTURE TYPE #2
 - 28- LIGHT FIXTURE TYPE #3
 - 29- LIGHT FIXTURE TYPE #4

- GENERAL NOTES**
1. REFER TO DRAWINGS AT THE END OF THE CHAPTER 5 SERIES FOR GLASS WINDOW TYPES AND ELEVATIONS.
 2. GROUND FLOOR STOREFRONT: PREFINISHED ALUMINUM STOREFRONT SYSTEM W/ CLEAR MONOLITHIC GLASS PANELS. SEE A-SERIES DRAWINGS AND SHEETS A3.01-A3.09 FOR TEMPERED GLASS LOCATIONS.
 3. SECOND FLOOR WINDOWS & ABOVE: PREFINISHED ALUMINUM WINDOW UNITS W/ TRUE MUNTINS & INSULATED GLASS PANELS - 1/2" CLEAR GLASS WITH LOW-E COATING ON INS SURFACE - 1/2" AIRSPACE
 4. ELEVATIONS INDICATE EXTENT OF EXTERIOR INSULATION AND FINISH SYSTEM (EIFS) COLOR/CURE (ANTIQUE PATINA OR SAND). COORDINATE DETAILED LAYOUTS OF FINISH AND COLOR WITH ARCHITECT.
 5. ALL SIGNAGE REQUIRES SEPARATE PERMIT AND APPROVAL.

APPROVED
BY THE CITY OF SCOTTSDALE
CASE NUMBER
CONSTRUCTION AND INSTALLATION SHALL BE IN ACCORDANCE WITH THIS PLAN AND ANY AND ALL DEVIATIONS WILL BE AT THE CONTRACTOR'S RISK

NEW
6-11-09

SCB
Solomon Cordwell Buenz & Associates Inc.
Architecture Planning Interior Design
625 North Michigan Avenue
Suite 900
Chicago, Illinois 60611
tel 312 896 1100 fax 312 896 1200

H&S International LLC
Bing Hu Architect
1785 N. PACESITEWAY
DISCOVER HOUSE
SUITE 600
SCOTTSDALE, ARIZONA 85255-6431
480-555-6028
480-585-2298 (FAX)

BROOKS ENGINEERS & SURVEYORS INC.
4602 E. ELWOOD STREET #16
PHOENIX, ARIZONA 85040
(PHONE) (602) 437-3733
(FAX) (480) 858-0204

CARUSO TURLEY SCOTT INC.
consulting structural engineers
2702 NORTH 44TH STREET SUITE 200
PHOENIX, ARIZONA 85008 (602) 912-9120 (912-9390 FAX)

PETERSON ASSOCIATES
CONSULTING ENGINEERS INC.
7201 N. DEERY DRIVE DITTA
SUITE 200
PHOENIX, ARIZONA 85020
(602) 942-6116
FAX: (602) 942-6120
www.peterson.com

Floor ASSOCIATES
Landscape Architecture
1425 North First Street
Second Floor
PHOENIX, ARIZONA 85004
Phone 602-462-1425
Fax 602-462-1427

© 2004 Solomon Cordwell Buenz & Associates, Inc.

NO.	DATE	DESCRIPTION
05.11.04		PERMIT CORRECTIONS (FIRE DEPT)
05.21.04		PERMIT REVIEW
05.21.04		DESIGN CLARIFICATIONS
05.03.04		ISSUE FOR BID - CORE & SHELL
04.15.04		ISSUE FOR BID - STEEL
04.08.04		ISSUE FOR PERMIT - PHASE 1A
01.08.04		100% DESIGN DEVELOPMENT - PHASE 1A
11.17.03		100% SCHEMATIC DESIGN

SCOTTSDALE WATERFRONT
Scottsdale, Arizona

Phase 1A
SOUTH BUILDING
RETAIL 'H' - 'I'

Scale: 1/8" = 1'-0"
Drawn By: SCB
Project Number: 2003014
Sheet Number: A3.04