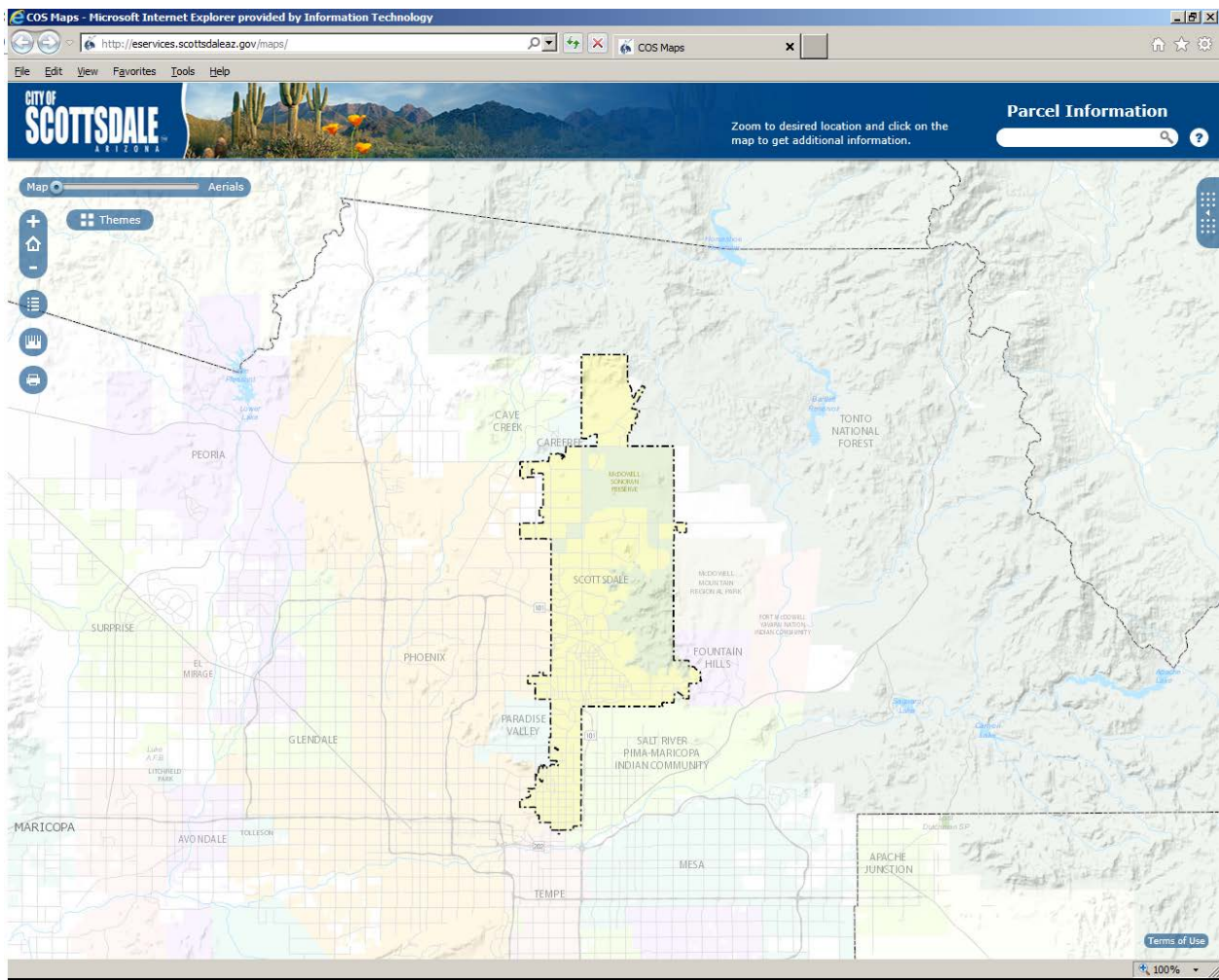


Help for the Scottsdale Interactive Map system.

The Scottsdale Interactive Map uses the latest web map technology combined with a clean, modern design to give you with the maximum amount of information with a minimum of work. It has been built to work with all of the most popular modern browsers: Internet Explorer 8 and higher, Mozilla Firefox, Apple Safari, and Google Chrome.

Please take a few moments to become familiar with the items in this Help file.

This is what the map looks like when you enter from <http://eservices.scottsdaleaz.gov/maps>.

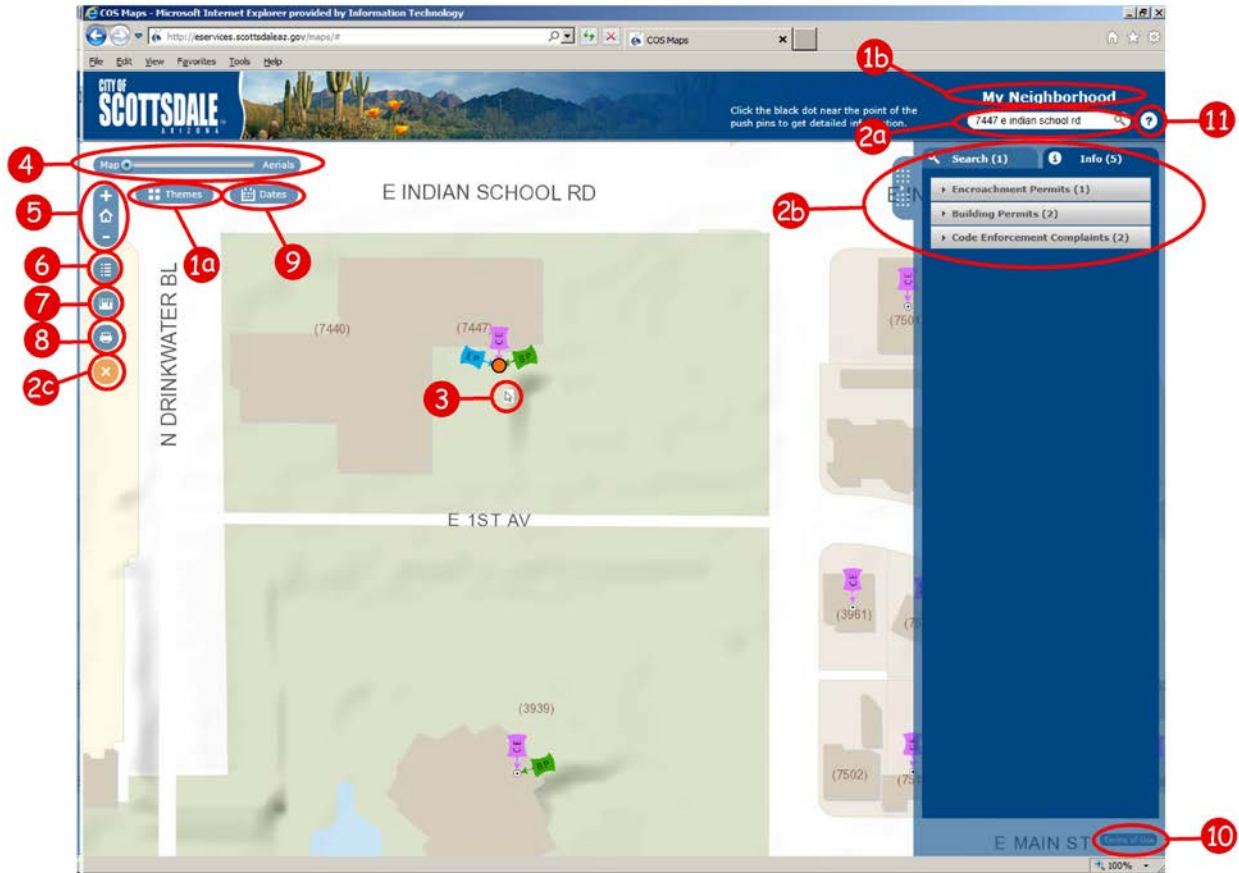


The following pages will provide you with a brief overview of the different ways to move around the map and get information.

But first...

Unlike many web based maps that require you to turn multiple layers on and off, the City of Scottsdale has developed a map based on the idea of Themes. Each theme contains a subset of data that is logically related, but doesn't overload you with too much information. Try it. We think you will like it.

Controls and Actions



1a, 1b: The Themes icon (1a). Click this to choose which theme you would like to display and search. A box will dropdown and let you choose among a number of options. Each theme has a description showing what information it contains. When you select a theme, the visible **Theme Name (1b)** changes. This way you won't forget which one you chose.

2a: The Search panel. Enter a full or partial address, intersection, or point of interest name and, if found, a list of the items (**2b**) will appear on the right hand side of the map allowing you to choose which item you want to view. When you click on an item in the list, the map will zoom to that location and highlight it. To clear the selection you just made, click on the Clear Selection icon (**2c**). By the way, the Clear Selection icon only appears when there is an active selection.

3: Getting Information. To see the current theme's data about a specific place, zoom in and use your mouse to click on that location. A list of thematic information categories will appear on the right (**2b**). (If nothing appears, you might have to zoom in closer.) Note the Category bars. Click on one to see that Category's information. Notice how the bars below it close up and slide to the bottom. Click on another Category, if available, to see its information.

4: The Map/Aerial slider. Use your mouse to move the slider to the right to see the latest aerial photos in place of the map. Or only slide partway to see the map and aerial together.

5: Zoom and Home buttons. Click the Home button in the center to zoom to the full extent of the City. Click the "+" sign for a fixed zoom-in and the "-" sign for a fixed zoom-out. If your mouse has a scroll function, you can use that as well for zooming in and out. If you want to zoom into a specific area, press your keyboard's shift key then click and drag your mouse over the area of interest. You will see a red rectangle form. When the rectangle covers the area you want, release the keys and you will be zoomed to the highlighted area.

6: The Legend button. Click this to see a Legend indicating the data being shown in this theme. If the data you are interested in does not show, keep zooming in. Many items in the map are "scale-dependent", which means that they are only visible once you've zoomed in enough.

7: The Measure tool. Click this to bring up the measuring tool. You may measure distances and areas. You can even get the "GPS Location" – the longitude and latitude of a point.

8: The Print tool. Click this to get a .PDF file of the map you are viewing. You may then save the .PDF on your computer. Then you can print it (using Adobe Acrobat Reader, which you probably already have on your computer), email it and even copy it to another device, such as a USB jump drive.

9: The Date filter. This will only appear for themes that allow you to filter by date. Click this to bring up the "Starting – Ending" date range form. Enter a starting date and an ending date and the data will be restricted to that time period.

10: Terms of Use. Click this to see the map disclaimer.

11: Help. Click this to display this Help document.

A few other things you should know...

Historical Aerials Theme – If you are interested in seeing how Scottsdale has changed over the years, try the Historical Aerials theme. We have consolidated all of our aerial photography from 1969 to the present into a single theme that can be viewed as either an animation or as individual years. Please note that parts of the City are not included with photography prior to 1999.

How to know which themes contain which data – See the instructions for items **1a** and **1b** above.