

1 SITE PLAN - OVERALL
1" = 80'-0"

GRAPHIC LEGEND

SYMBOL:	DESCRIPTION:
	MAIN ENTRY / EXIT
	FIRE HYDRANT - COORDINATE LOCATIONS WITH CIVIL DRAWINGS
	FIRE LANE (FIRE ACCESSIBILITY SITE PLAN), COORDINATE FINAL LOCATIONS W/ CIVIL INDICATES NEW SITEWORK
	INDICATES ADJACENT EXISTING SITE CONDITIONS
	INDICATES PROPERTY LINE
	LIGHT POLE, COORDINATE W/ ELECTRICAL DRAWINGS

PROJECT DATA

PROJECT NAME:	THE LOOP
PROJECT ADDRESS:	17761, 17791, 17799 & 17821 N 85TH ST, SCOTTSDALE AZ
PROJECT SCOPE:	NEW OFFICE / WAREHOUSE
ASSESSOR PARCEL NO.:	215-07-212L, 215-07-212M, 215-07-212L, 215-07-212K
CURRENT ZONING:	I-1
SITE AREA (GROSS):	+/- 800,183 SF (16.67 AC)
SITE AREA (NET):	+/- 726,037 SF (16.67 AC)
LANDSCAPE AREA (PER CC&R):	+/- 135,356 S.F.
PARKING AREA:	+/- 20,862 S.F. = 15.4% (15% REQ)
TOTAL SITE LANDSCAPING:	+/- 136,970 S.F. = 18.9% (15% REQ)
STORIES:	ALL BUILDINGS ONE STORY
BUILDING AREAS:	SEE AREA CALCULATIONS ON SITE PLAN DRAWINGS
LOT COVERAGE:	+/- 36.9%
FAR ALLOWED:	0.8
FAR PROVIDED:	0.36
OCCUPANCY:	B / S-1
CONSTRUCTION TYPE:	IIIB W/ E.S.F.R.
BUILDING HEIGHT:	MAX BLDG HEIGHT = 42'-0"
PROJECT DESCRIPTION:	4 NEW WAREHOUSE / OFFICE BUILDINGS TOTALING APPROX. 267,051 SOFT WITH SITE IMPROVEMENTS ON A +/- 16.67 AC SITE.
NOTE:	VERTICAL CONSTRUCTION WITH COMBUSTIBLE MATERIALS SHALL NOT BEGIN PRIOR TO ACCEPTANCE OF FIRE APPARATUS ACCESS ROADS AND FIRE HYDRANTS". 2018 IFC SECTION 501.4
NOTE:	STRUCTURE CONSTRUCTION SHALL COMPLY WITH REQUIREMENTS OF IFC CHAPTER 33 AND NFPA 241. 2018 IFC SECTION 3301.1

PARKING INFORMATION

REQUIRED PARKING (PER CITY):
OFFICE: +/- 20,000 SF/300 = 67 SPACES
WAREHOUSE: +/- 247,051 SF/800 = 309 SPACES

376 TOTAL SPACES REQUIRED

ACCESSIBLE PARKING REQUIRED: 376*4% = 16 SPACES

PARKING & TRUCK STALL COUNTS	
TYPE	COUNT
ACCESSIBLE PARKING SPACE	21
EV PARKING SPACE	18
TYPICAL PARKING SPACE	392
TOTAL SPACES PROVIDED: 431 (1.86 CARS/1000)	

REQUIRED EV CHARGING (4% OF PARKING):
431*4% = 17.2 = 18 SPACES

18 EV CHARGING SPACES PROVIDED

REQUIRED EV CAPABLE - ELECTRICAL SERVICE CAPACITY AND CONDUIT RUN (10% OF PARKING):
431*10% = 43.1 = 44 SPACES

44 EV CAPABLE SPACES PROVIDED *FINAL LOCATIONS TBD

REQUIRED BICYCLE PARKING (PER CITY):
1/10 OF TOTAL VEHICLE PARKING = +/- 38 SPACES

40 SPACES PROVIDED

AREA CALCULATIONS

BUILDING AREA - GROSS	
NAME	GROSS AREA
[AREA UP TO OUTSIDE FACE OF BLDG PERIMETER]	
BUILDING A	101772 SF
BUILDING B	54273 SF
BUILDING C	55503 SF
BUILDING D	55503 SF
TOTAL GSF	267051 SF

BUILDING AREA - USABLE	
NAME	AREA
[AREA UP TO INSIDE FACE OF BLDG PERIMETER]	
BUILDING A	100703 SF
BUILDING B	53466 SF
BUILDING C	54694 SF
BUILDING D	54693 SF

GENERAL DRAWING NOTES

A. REFER TO THE A0.X SERIES DRAWINGS FOR ARCHITECTURAL GENERAL NOTES, DRAWING, REFERENCE AND MATERIAL SYMBOLS AS WELL AS ABBREVIATIONS USED ON THIS DRAWING.

B. FOR BASIC LIFE SAFETY AND CODE INFORMATION APPLYING TO THIS PROJECT, REFER TO G.X SERIES LOCATED PER THE PROJECT SHEET INDEX.

C. REFER TO A2.X.X SERIES FOR ARCHITECTURAL FLOOR PLANS, ROOF PLANS, & TILT WALL COORDINATION INFORMATION

D. REFER TO AND COORDINATE WITH CIVIL, LANDSCAPE, STRUCTURAL, MECHANICAL, AND ELECTRICAL DRAWINGS FOR ADDITIONAL SITE INFORMATION NOT SHOWN ON THIS DRAWING.

E. SITE SCREEN WALLS A MAXIMUM 8'-0" ABOVE THE HIGHEST FINISHED GRADE OF THE PARKING AREA OR STREET CURB, WHICHEVER IS HIGHER

F. REFER TO AND COORDINATE WITH CIVIL DRAWINGS FOR ALL FINISH GRADES.

G. REFER TO A4.X.X SERIES DRAWINGS FOR ENLARGED EXTERIOR ELEVATIONS, BUILDING SECTIONS, TILT WALL ELEVATIONS, & WALL SECTIONS

REFERENCE KEYNOTES

DESIGNGROUP

LGE

1200 N. 52nd Street•Phoenix, AZ•85008
P. 480.966.4001

THE LOOP

Scottsdale, Arizona

LGE

DESIGNBUILD

#	REVISION	DATE

NOT FOR CONSTRUCTION

SHEET TITLE:	
ARCHITECTURAL SITE PLAN - OVERALL	
ISSUE DATE:	7/12/24
DRAWN BY:	LGE DESIGN GROUP
CHECKED BY:	--
PROJECT No:	--

A1.1.1

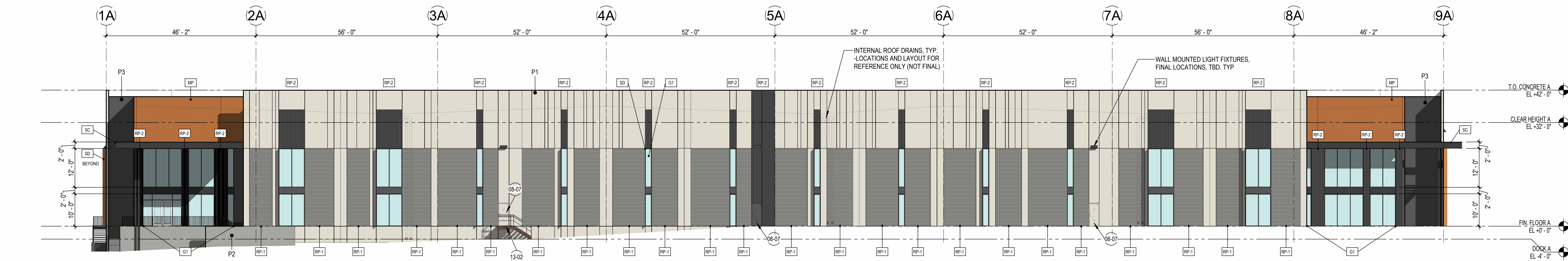
13-DR-2024
11/26/2024

#	REVISION	DATE

SHEET TITLE:	EXTERIOR BUILDING ELEVATIONS - BUILDING A NORTH / SOUTH
ISSUE DATE:	11/20/24
DRAWN BY:	LGE DESIGN GROUP
CHECKED BY:	--
PROJECT No:	--



1 BUILDING A - NORTH
1/16" = 1'-0"



2 BUILDING A - SOUTH
1/16" = 1'-0"

MATERIALS

REFERENCE KEYNOTES

GENERAL DRAWING NOTES

MISC. ARCHITECTURAL ELEMENTS

- SC STEEL CANOPY** - BLACKENED STEEL MEMBERS W/ CLEAR COAT FINISH.
SOFFIT CONDITION OVER ENTRANCES TO BE WOOD PANEL PURA NFC LUMEN AND WOOD DECORS WESTERN RED CEDAR
- MP METAL PANEL** - ALUCOBOND USA METAL PANEL OVER METAL STUD BACKING. LOCATIONS AT MAIN ENTRIES. FINISH NATIVE COPPER MICA
- SD SHADING DEVICE** - VERTICAL FIN. LOCATIONS AT ALL NON-ENTRANCE AND TRUCK COURT WINDOWS. FINISH TO MATCH [MP] (NATIVE COPPER MICA)

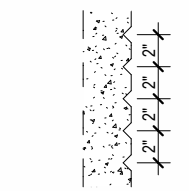
REVEAL KEY

DESCRIPTION:

V-GROOVE REVEAL SPACED AT 2" ON CENTER

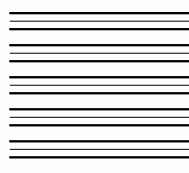
SECTION VIEW:

ELEVATION VIEW:



ELEVATION VIEW:

ELEVATION VIEW:



* TO BE PAINTED [P2]

* TO BE PAINTED [P3]

EXTERIOR WALLS

EXTERIOR WALL KEY:

C1 CONCRETE TILT PANEL W/ VERTICAL AND HORIZONTAL V-GROOVE REVEALS - PAINTED.

REFER TO REVEAL KEY, TILT WALL COORDINATION PLAN, AND A5.3.1 FOR TYPICAL DETAILS.

GLAZING / LOUVERS

GLAZING KEY:

MATERIAL: DESCRIPTION:
FRAMES 2"x6", 2"x4-1/2" BLACK ANODIZED (AB-8) ALUMINUM STOREFRONT
GLAZING

SOLARBAN 60, 1" INSULATED GLAZING LOW-E SOLARCOOL SOLARGRAY

NOTE: ALL GLAZING TO COMPLY WITH IBC 2406.

GLAZING ELEVATION KEY:



PAINTING NOTES:

1. PAINTER TO PROVIDE FOUR COLOR SCHEME WITH ALL DECORATIVE BANKS MASKED AND PAINTED IN COLORS TO BE SELECTED

2. SEALANTS FOR THE PROJECT TO MATCH ADJACENT MATERIAL COLOR - NO WHITE OR OFF WHITE COLORS.

3. PAINTER TO PREPARE SAMPLES WITH APPROPRIATE COLOR TO BE APPROVED BY OWNER PRIOR TO APPLICATION ON BUILDING FACADES.

4. PAINTER TO PROVIDE TWO COATS OF SEALER TO ALL EXPOSED NATURAL BLOCK, PRECAST CONCRETE, UNPAINTED CONCRETE AND OTHER MATERIALS AS REQUIRED TO PROVIDE A WEATHER SEALED PROJECT.

5. COORDINATE PAINT WITH ALL SIDES AND TURN-BACKS OF TILT WALL PANELS

PAINT

KEY: DESCRIPTION:

P1 SHERWIN WILLIAMS 'OYSTER WHITE' # SW7637 (LRV 72)

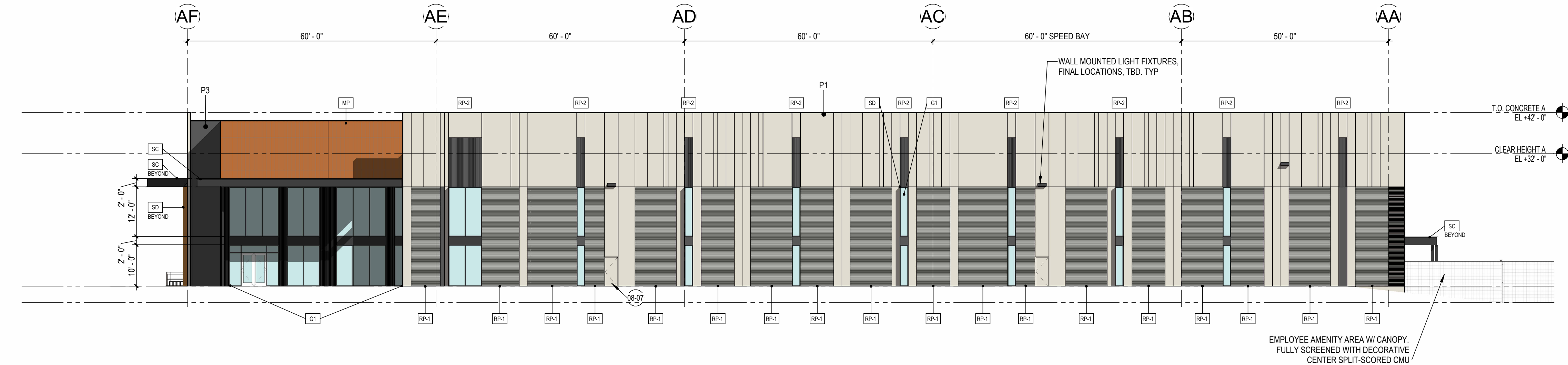
P2 SHERWIN WILLIAMS 'INTELLECTUAL GRAY' # SW7045 (LRV 39)

P3 SHERWIN WILLIAMS 'URBANE BRONZE' # SW7048 (LRV 10)

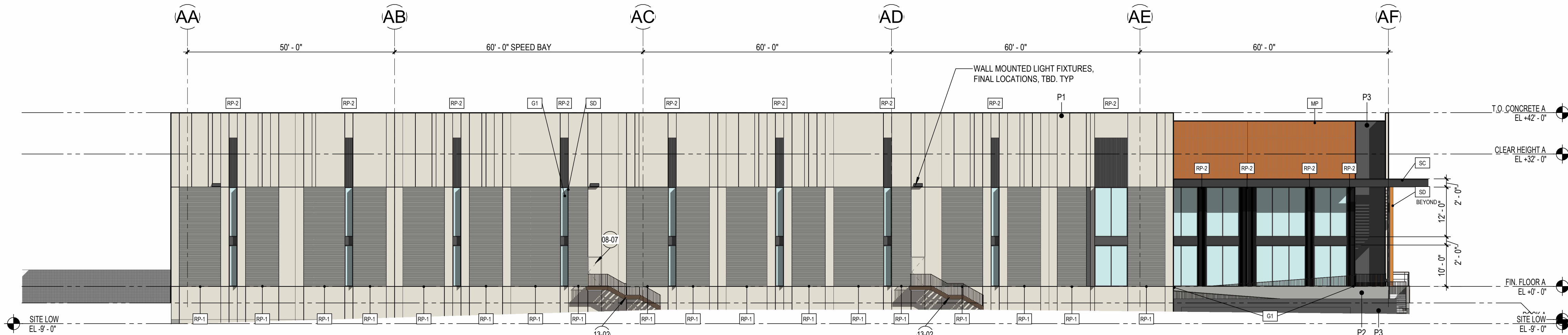
- 03-07 CONCRETE DOCK RAMP. REFER TO SITE DETAILS, AND COORDINATE WITH STRUCTURE & CIVIL DRAWINGS. DOCK RAMPS TO RECEIVE (2) BOLLARDS ALIGNED WITH CENTERLINE OF HANDRAIL FOR PROTECTION
- 08-02 9'-0"x10'-0" HIGH LIFT OVERHEAD DOOR. REFER TO DOOR SCHEDULE FOR MORE INFO.
- 08-04 14'-0"x16'-0" HIGH LIFT OVERHEAD DOOR. REFER TO DOOR SCHEDULE FOR MORE INFO. OVERHEAD DOORS TO RECEIVE (2) BOLLARDS ON INTERIOR SIDE, ALIGNED WITH DOOR OPENING FOR PROTECTION
- 08-07 EXTERIOR DOOR & FRAME. REFER TO DOOR SCHEDULE FOR MORE INFO.
- 13-01 EXTERIOR STAIRS W/ LANDING, 42" HIGH GUARDRAIL, & 36" HIGH HANDRAILS. ALL STAIRS IN TRUCK COURT LOCATIONS TO RECEIVE (2) BOLLARDS ALIGNED WITH CENTERLINE OF HANDRAIL FOR PROTECTION
- 13-02 EXTERIOR STAIRS W/ LANDING, 42" HIGH GUARDRAIL, & 36" HIGH HANDRAILS - COORDINATE FINAL LOCATIONS WITH GRADING - REF. CIVIL. MAX RISER DEPTH NOT TO EXCEED 7". RISERS DIMENSIONS TO REMAIN EQUAL. MAX TREAD DEPTH NOT TO EXCEED 11". TREAD DIMENSIONS TO REMAIN EQUAL. STAIR STRINGERS AND RAILS TO MATCH WEATHERING STEEL FINISH.

- A. REFER TO THE A0.X SERIES DRAWINGS FOR ARCHITECTURAL GENERAL NOTES, MATERIAL SYMBOLS, ABBREVIATIONS, AND DIMENSIONING CONVENTIONS USED ON THIS DRAWING.
- B. REFER TO AND COORDINATE WITH STRUCTURAL, MECHANICAL, PLUMBING, AND ELECTRICAL DRAWINGS FOR ADDITIONAL INFORMATION NOT SHOWN ON THIS DRAWING.
- C. REFER TO AND COORDINATE WITH CIVIL DRAWINGS FOR ALL FINISH GRADES.
- D. REFER TO A4.X.X SERIES DRAWINGS FOR ENLARGED EXTERIOR ELEVATIONS, BUILDING SECTIONS, TILT WALL ELEVATIONS, & WALL SECTIONS
- E. REFER TO A9.2.X SERIES DRAWINGS FOR DOOR, GLAZING & LOUVER SCHEDULES, ELEVATIONS & DETAILS

1 BUILDING A - EAST
1/16" = 1'-0"



2 BUILDING A - WEST
1/16" = 1'-0"



		MATERIALS				REFERENCE KEYNOTES	GENERAL DRAWING NOTES
	MISC. ARCHITECTURAL ELEMENTS	REVEAL KEY	EXTERIOR WALLS	GLAZING / LOUVERS	PAINT	08-07 EXTERIOR DOOR & FRAME. REFER TO DOOR SCHEDULE FOR MORE INFO. 13-02 EXTERIOR STAIRS W/ LANDING, 42" HIGH GUARDRAIL, & 36" HIGH HANDRAILS - COORDINATE FINAL LOCATIONS WITH GRADING - REF. CIVIL. MAX RISER DEPTH NOT TO EXCEED 7". RISERS DIMENSIONS TO REMAIN EQUAL. MAX TREAD DEPTH NOT TO EXCEED 11". TREAD DIMENSIONS TO REMAIN EQUAL. STAIR STRINGERS AND RAILS TO MATCH WEATHERING STEEL FINISH.	A. REFER TO THE A0.X SERIES DRAWINGS FOR ARCHITECTURAL GENERAL NOTES, MATERIAL SYMBOLS, ABBREVIATIONS, AND DIMENSIONING CONVENTIONS USED ON THIS DRAWING. B. REFER TO AND COORDINATE WITH STRUCTURAL, MECHANICAL, PLUMBING, AND ELECTRICAL DRAWINGS FOR ADDITIONAL INFORMATION NOT SHOWN ON THIS DRAWING. C. REFER TO AND COORDINATE WITH CIVIL DRAWINGS FOR ALL FINISH GRADES. D. REFER TO A4.X.X SERIES DRAWINGS FOR ENLARGED EXTERIOR ELEVATIONS, BUILDING SECTIONS, TILT WALL ELEVATIONS, & WALL SECTIONS E. REFER TO A9.2.X SERIES DRAWINGS FOR DOOR, GLAZING & LOUVER SCHEDULES, ELEVATIONS & DETAILS
	<div>SC</div> STEEL CANOPY - BLACKENED STEEL MEMBERS W/ CLEAR COAT FINISH. SOFFIT CONDITION OVER ENTRANCES TO BE WOOD PANEL PURA NFC LUMEN AND WOOD DECORS WESTERN RED CEDAR <div>MP</div> METAL PANEL - ALUCOBOND USA METAL PANEL OVER METAL STUD BACKING. LOCATIONS AT MAIN ENTRIES. FINISH NATIVE COPPER MICA <div>SD</div> SHADING DEVICE - VERTICAL FIN. LOCATIONS AT ALL NON-ENTRANCE AND TRUCK COURT WINDOWS. FINISH TO MATCH <div>MP</div> (NATIVE COPPER MICA)	<p>DESCRIPTION:</p> <p>V-GROOVE REVEAL SPACED AT 2" ON CENTER</p> <p>SECTION VIEW: ELEVATION VIEW:</p> <p>ELEVATION VIEW:</p> <p><div>RP-1</div> * TO BE PAINTED <div>P2</div> <div>RP-2</div> * TO BE PAINTED <div>P3</div></p>	<p>EXTERIOR WALL KEY:</p> <p><div>G1</div> CONCRETE TILT PANEL W/ VERTICAL AND HORIZONTAL V-GROOVE REVEALS - PAINTED.</p> <p>REFER TO REVEAL KEY, TILT WALL COORDINATION PLAN, AND A5.3.1 FOR TYPICAL DETAILS.</p>	<p>GLAZING KEY:</p> <p>MATERIAL: DESCRIPTION:</p> <p>FRAMES 2"x6", 2"x4-1/2" BLACK ANODIZED (AB-8) ALUMINUM STOREFRONT</p> <p>GLAZING</p> <p><div>G1</div> SOLARBAN 60, 1" INSULATED GLAZING LOW-E SOLARCOOL SOLARGRAY</p> <p>NOTE: ALL GLAZING TO COMPLY WITH IBC 2406.</p> <p>GLAZING ELEVATION KEY:</p> <p><div>W-8</div></p>	<p>PAINT KEY:</p> <p>KEY: DESCRIPTION:</p> <p><div>P1</div> SHERWIN WILLIAMS 'OYSTER WHITE' # SW7637 (LRV 72)</p> <p><div>P2</div> SHERWIN WILLIAMS 'INTELLECTUAL GRAY' # SW7045 (LRV 39)</p> <p><div>P3</div> SHERWIN WILLIAMS 'URBANE BRONZE' # SW7048 (LRV 10)</p> <p>PAINTING NOTES:</p> <p>1. PAINTER TO PROVIDE FOUR COLOR SCHEME WITH ALL DECORATIVE BANKS MASKED AND PAINTED IN COLORS TO BE SELECTED</p> <p>2. SEALANTS FOR THE PROJECT TO MATCH ADJACENT MATERIAL COLOR - NO WHITE OR OFF WHITE COLORS.</p> <p>3. PAINTER TO PREPARE SAMPLES WITH APPROPRIATE COLOR TO BE APPROVED BY OWNER PRIOR TO APPLICATION ON BUILDING FACADES.</p> <p>4. PAINTER TO PROVIDE TWO COATS OF SEALER TO ALL EXPOSED NATURAL BLOCK, PRECAST CONCRETE, UNPAINTED CONCRETE AND OTHER MATERIALS AS REQUIRED TO PROVIDE A WEATHER SEALED PROJECT.</p> <p>5. COORDINATE PAINT WITH ALL SIDES AND TURN-BACKS OF TILT WALL PANELS</p>		

THESE DRAWINGS ARE AN INSTRUMENT OF SERVICE AND THE PROPERTY OF LGE DESIGN GROUP AND ARE NOT TO BE REPRODUCED OR USED FOR ANY OTHER PROJECT WITHOUT THE WRITTEN PERMISSION OF LGE DESIGN GROUP. THE USE OF THESE DRAWINGS SHALL BE LIMITED TO THE PROJECT AND SITE SPECIFICALLY IDENTIFIED ON THESE DRAWINGS.

#	REVISION	DATE

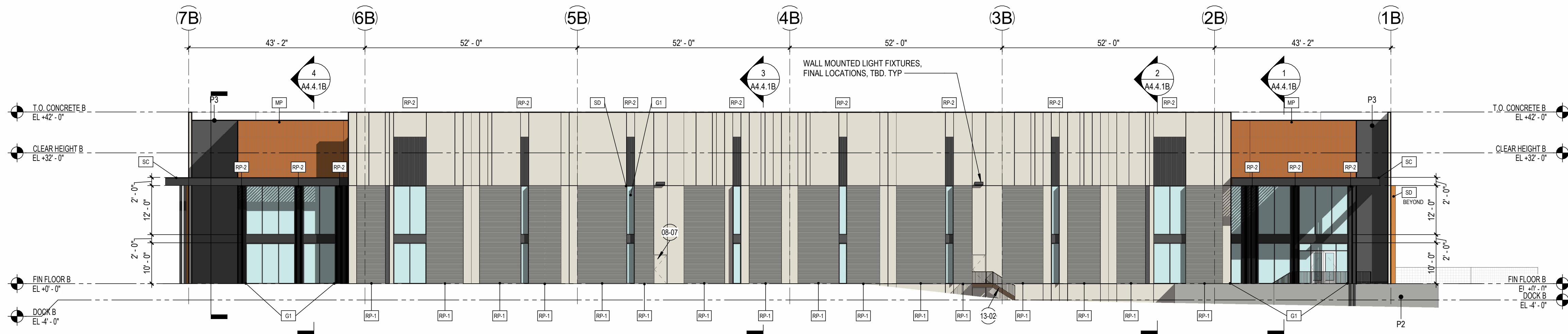
NOT FOR CONSTRUCTION		
SHEET TITLE: EXTERIOR BUILDING ELEVATIONS - BUILDING A EAST / WEST		
ISSUE DATE: 11/20/24		
DRAWN BY: LGE DESIGN GROUP		
CHECKED BY: --		
PROJECT No: --		

#	REVISION	DATE

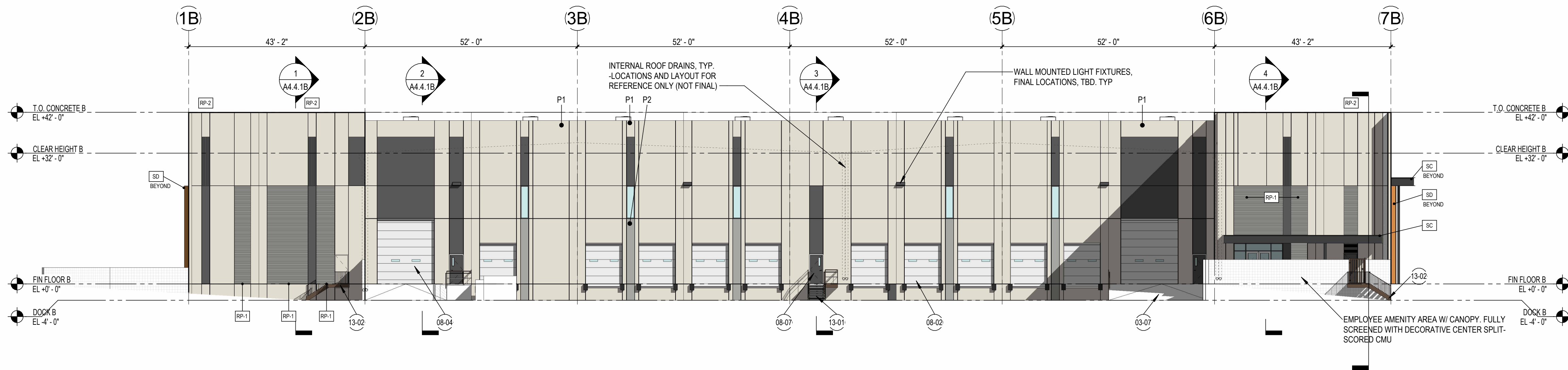
NOT FOR CONSTRUCTION

SHEET TITLE:
EXTERIOR BUILDING ELEVATIONS -
BUILDING B NORTH / SOUTH
ISSUE DATE: 11/20/24
DRAWN BY: Author
CHECKED BY: Checker
PROJECT No: --

A4.1.1B



1 BUILDING B - NORTH
1/16" = 1'-0"



2 BUILDING B - SOUTH
1/16" = 1'-0"

MATERIALS

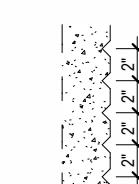

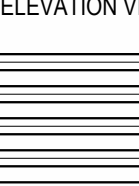
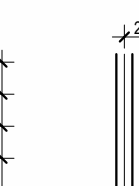
REFERENCE KEYNOTES

GENERAL DRAWING NOTES

MISC. ARCHITECTURAL ELEMENTS

- STEEL CANOPY** - BLACKENED STEEL MEMBERS W/ CLEAR COAT FINISH.
SOFFIT CONDITION OVER ENTRANCES TO BE WOOD PANEL PURA NFC LUMEN AND WOOD DECORS WESTERN RED CEDAR
- METAL PANEL** - ALUCOBOND USA METAL PANEL OVER METAL STUD BACKING. LOCATIONS AT MAIN ENTRIES. FINISH NATIVE COPPER MICA
- SHADING DEVICE** - VERTICAL FIN. LOCATIONS AT ALL NON-ENTRANCE AND TRUCK COURT WINDOWS. FINISH TO MATCH [MP] (NATIVE COPPER MICA)

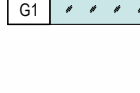

REVEAL KEY

- DESCRIPTION:**
V-GROOVE REVEAL SPACED AT 2" ON CENTER
- SECTION VIEW:**  **ELEVATION VIEW:** 
- ELEVATION VIEW:**  
- RP-1** *TO BE PAINTED **P2** **RP-2** *TO BE PAINTED **P3**

EXTERIOR WALLS

- EXTERIOR WALL KEY:**
- CONCRETE TILT PANEL** W/ VERTICAL AND HORIZONTAL V-GROOVE REVEALS - PAINTED.
 - REFER TO REVEAL KEY, TILT WALL COORDINATION PLAN, AND A5.3.1 FOR TYPICAL DETAILS.

GLAZING / LOUVERS

- GLAZING KEY:**
- MATERIAL:** **DESCRIPTION:**
- FRAMES** 2"x6", 2"x4-1/2" BLACK ANODIZED (AB-8) ALUMINUM STOREFRONT
- GLAZING**  SOLARBAN 60, 1" INSULATED GLAZING LOW-E SOLARCOOL SOLARGRAY
- NOTE: ALL GLAZING TO COMPLY WITH IBC 2406.**
- GLAZING ELEVATION KEY:** 

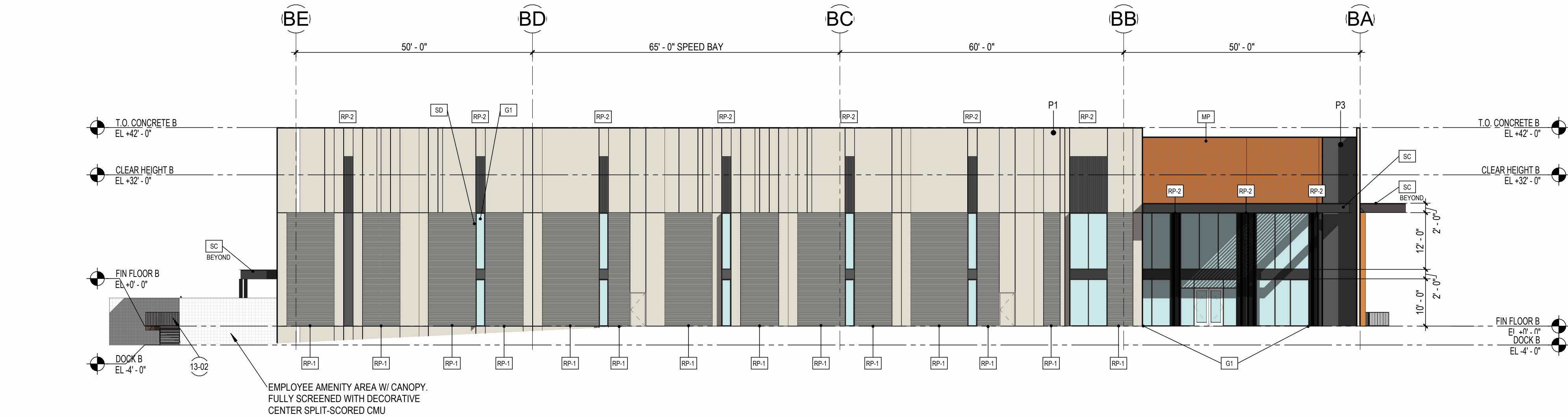
PAINT

- PAINTING NOTES:**
- PAINTER TO PROVIDE FOUR COLOR SCHEME WITH ALL DECORATIVE BANKS MASKED AND PAINTED IN COLORS TO BE SELECTED
 - SEALANTS FOR THE PROJECT TO MATCH ADJACENT MATERIAL COLOR - NO WHITE OR OFF WHITE COLORS.
 - PAINTER TO PREPARE SAMPLES WITH APPROPRIATE COLOR TO BE APPROVED BY OWNER PRIOR TO APPLICATION ON BUILDING FACADES.
 - PAINTER TO PROVIDE TWO COATS OF SEALER TO ALL EXPOSED NATURAL BLOCK, PRECAST CONCRETE, UNPAINTED CONCRETE AND OTHER MATERIALS AS REQUIRED TO PROVIDE A WEATHER SEALED PROJECT.
 - COORDINATE PAINT WITH ALL SIDES AND TURN-BACKS OF TILT WALL PANELS
- PAINT KEY:**
KEY: DESCRIPTION:
- P1** SHERWIN WILLIAMS "OYSTER WHITE" # SW7637 (LRV 72)
 - P2** SHERWIN WILLIAMS "INTELLECTUAL GRAY" # SW7045 (LRV 39)
 - P3** SHERWIN WILLIAMS "URBANE BRONZE" # SW7048 (LRV 10)

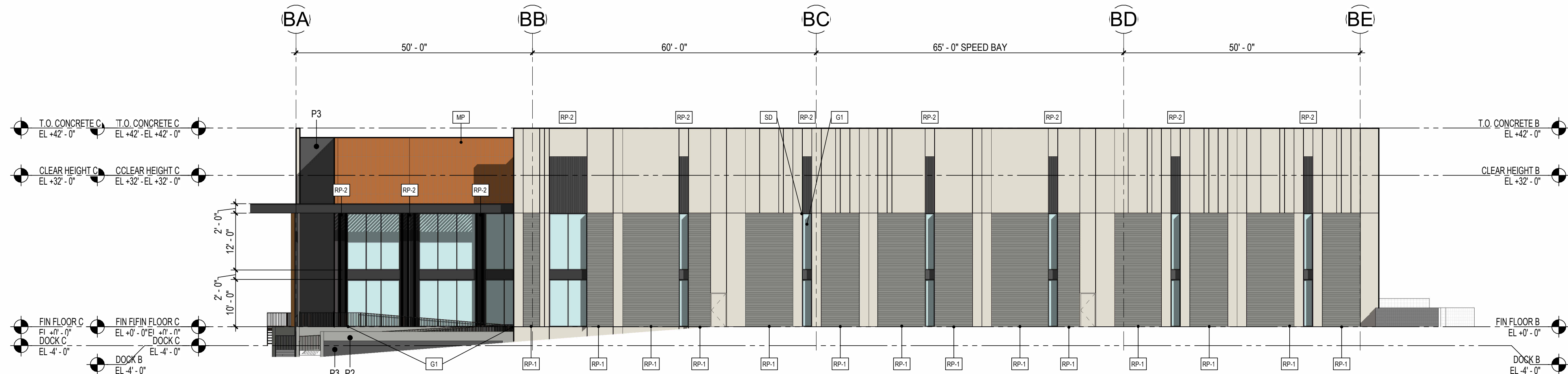
- 03-07 CONCRETE DOCK RAMP. REFER TO SITE DETAILS, AND COORDINATE WITH STRUCTURE & CIVIL DRAWINGS. DOCK RAMPS TO RECEIVE (2) BOLLARDS ALIGNED WITH CENTERLINE OF HANDRAIL FOR PROTECTION
- 08-02 9'-0"x10'-0" HIGH LIFT OVERHEAD DOOR, REFER TO DOOR SCHEDULE FOR MORE INFO.
- 08-04 14'-0"x16'-0" HIGH LIFT OVERHEAD DOOR, REFER TO DOOR SCHEDULE FOR MORE INFO. OVERHEAD DOORS TO RECEIVE (2) BOLLARDS ON INTERIOR SIDE, ALIGNED WITH DOOR OPENING FOR PROTECTION
- 08-07 EXTERIOR DOOR & FRAME. REFER TO DOOR SCHEDULE FOR MORE INFO.
- 13-01 EXTERIOR STAIRS W/ LANDING, 42" HIGH GUARDRAIL, & 36" HIGH HANDRAILS. ALL STAIRS IN TRUCK COURT LOCATIONS TO RECEIVE (2) BOLLARDS ALIGNED WITH CENTERLINE OF HANDRAIL FOR PROTECTION
- 13-02 EXTERIOR STAIRS W/ LANDING, 42" HIGH GUARDRAIL, & 36" HIGH HANDRAILS - COORDINATE FINAL LOCATIONS WITH GRADING - REF. CIVIL. MAX RISER DEPTH NOT TO EXCEED 7" RISERS DIMENSIONS TO REMAIN EQUAL. MAX TREAD DEPTH NOT TO EXCEED 11". TREAD DIMENSIONS TO REMAIN EQUAL. STAIR STRINGERS AND RAILS TO MATCH WEATHERING STEEL FINISH.

- A. REFER TO THE A0.X SERIES DRAWINGS FOR ARCHITECTURAL GENERAL NOTES, MATERIAL SYMBOLS, ABBREVIATIONS, AND DIMENSIONING CONVENTIONS USED ON THIS DRAWING.
- B. REFER TO AND COORDINATE WITH STRUCTURAL, MECHANICAL, PLUMBING, AND ELECTRICAL DRAWINGS FOR ADDITIONAL INFORMATION NOT SHOWN ON THIS DRAWING.
- C. REFER TO AND COORDINATE WITH CIVIL DRAWINGS FOR ALL FINISH GRADES.
- D. REFER TO A4.X.X SERIES DRAWINGS FOR ENLARGED EXTERIOR ELEVATIONS, BUILDING SECTIONS, TILT WALL ELEVATIONS, & WALL SECTIONS
- E. REFER TO A9.2.X SERIES DRAWINGS FOR DOOR, GLAZING & LOUVER SCHEDULES, ELEVATIONS & DETAILS

1 BUILDING B - EAST
1/16" = 1'-0"



2 BUILDING B - WEST
1/16" = 1'-0"



MATERIALS

REFERENCE KEYNOTES

GENERAL DRAWING NOTES

MISC. ARCHITECTURAL ELEMENTS

- SC** STEEL CANOPY - BLACKENED STEEL MEMBERS W/ CLEAR COAT FINISH.
- SOFFIT CONDITION OVER ENTRANCES TO BE WOOD PANEL PURA NFC LUMEN AND WOOD DECORS WESTERN RED CEDAR
- MP** METAL PANEL - ALUCOBOND USA METAL PANEL OVER METAL STUD BACKING. LOCATIONS AT MAIN ENTRIES. FINISH NATIVE COPPER MICA
- SD** SHADING DEVICE - VERTICAL FIN. LOCATIONS AT ALL NON-ENTRANCE AND TRUCK COURT WINDOWS. FINISH TO MATCH **MP** (NATIVE COPPER MICA)

REVEAL KEY

- DESCRIPTION:**
V-GROOVE REVEAL SPACED AT 2" ON CENTER
- SECTION VIEW:**
- ELEVATION VIEW:**
- RP-1** *TO BE PAINTED **P2**
- RP-2** *TO BE PAINTED **P3**

EXTERIOR WALLS

- EXTERIOR WALL KEY:**
- G1** CONCRETE TILT PANEL W/ VERTICAL AND HORIZONTAL V-GROOVE REVEALS - PAINTED.
- REFER TO REVEAL KEY, TILT WALL COORDINATION PLAN, AND A5.3.1 FOR TYPICAL DETAILS.

GLAZING / LOUVERS

- GLAZING KEY:**
- MATERIAL:** DESCRIPTION:
- FRAMES** 2"x6", 2"x4-1/2" BLACK ANODIZED (AB-8) ALUMINUM STOREFRONT
- GLAZING**
- G1** SOLARBAN 60, 1" INSULATED GLAZING LOW-E SOLARCOOL SOLARGRAY
- NOTE: ALL GLAZING TO COMPLY WITH IBC 2406.**
- GLAZING ELEVATION KEY:**
- W8**

PAINT

- PAINTING NOTES:**
1. PAINTER TO PROVIDE FOUR COLOR SCHEME WITH ALL DECORATIVE BANKS MASKED AND PAINTED IN COLORS TO BE SELECTED
2. SEALANTS FOR THE PROJECT TO MATCH ADJACENT MATERIAL COLOR - NO WHITE OR OFF WHITE COLORS.
3. PAINTER TO PREPARE SAMPLES WITH APPROPRIATE COLOR TO BE APPROVED BY OWNER PRIOR TO APPLICATION ON BUILDING FACADES.
4. PAINTER TO PROVIDE TWO COATS OF SEALER TO ALL EXPOSED NATURAL BLOCK, PRECAST CONCRETE, UNPAINTED CONCRETE AND OTHER MATERIALS AS REQUIRED TO PROVIDE A WEATHER SEALED PROJECT.
5. COORDINATE PAINT WITH ALL SIDES AND TURN-BACKS OF TILT WALL PANELS
- PAINT KEY:**
KEY: DESCRIPTION:
- P1** SHERWIN WILLIAMS 'OYSTER WHITE' # SW7637 (LRV 72)
- P2** SHERWIN WILLIAMS 'INTELLECTUAL GRAY' # SW7045 (LRV 39)
- P3** SHERWIN WILLIAMS 'URBANE BRONZE' # SW7048 (LRV 10)

13-02 EXTERIOR STAIRS W/ LANDING, 42" HIGH GUARDRAIL, & 36" HIGH HANDRAILS - COORDINATE FINAL LOCATIONS WITH GRADING - REF: CIVIL. MAX RISER DEPTH NOT TO EXCEED 7". RISERS DIMENSIONS TO REMAIN EQUAL. MAX TREAD DEPTH NOT TO EXCEED 11". TREAD DIMENSIONS TO REMAIN EQUAL. STAIR STRINGERS AND RAILS TO MATCH WEATHERING STEEL FINISH.

- A. REFER TO THE A0.X SERIES DRAWINGS FOR ARCHITECTURAL GENERAL NOTES, MATERIAL SYMBOLS, ABBREVIATIONS, AND DIMENSIONING CONVENTIONS USED ON THIS DRAWING.
- B. REFER TO AND COORDINATE WITH STRUCTURAL, MECHANICAL, PLUMBING, AND ELECTRICAL DRAWINGS FOR ADDITIONAL INFORMATION NOT SHOWN ON THIS DRAWING.
- C. REFER TO AND COORDINATE WITH CIVIL DRAWINGS FOR ALL FINISH GRADES.
- D. REFER TO A4.X.X SERIES DRAWINGS FOR ENLARGED EXTERIOR ELEVATIONS, BUILDING SECTIONS, TILT WALL ELEVATIONS, & WALL SECTIONS
- E. REFER TO A9.2.X SERIES DRAWINGS FOR DOOR, GLAZING & LOUVER SCHEDULES, ELEVATIONS & DETAILS

THE LOOP

Scottsdale, Arizona

LGE DESIGNBUILD

#	REVISION	DATE

NOT FOR CONSTRUCTION

SHEET TITLE:	EXTERIOR BUILDING ELEVATIONS - BUILDING B EAST / WEST
ISSUE DATE:	11/20/24
DRAWN BY:	Author
CHECKED BY:	Checker
PROJECT No:	--

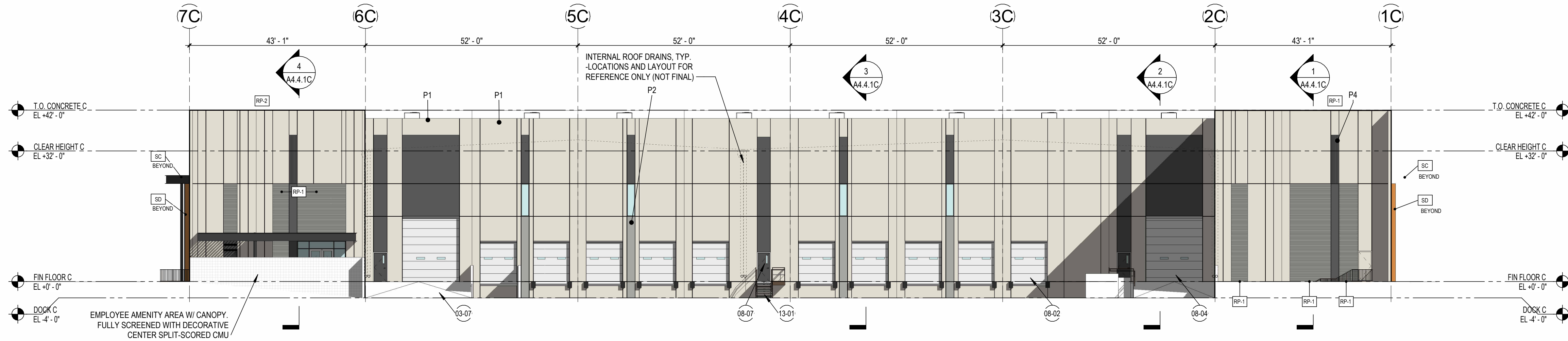
A4.1.2B

LGE DESIGNGROUP
1200 N. 52nd Street • Phoenix, AZ • 85008
P. 480.966.4001

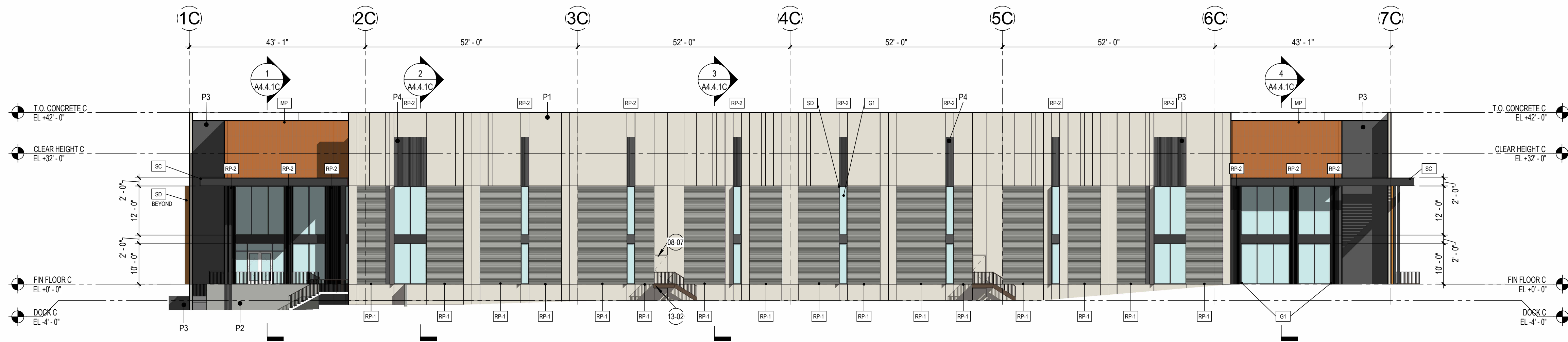
#	REVISION	DATE

NOT FOR CONSTRUCTION	
SHEET TITLE: EXTERIOR BUILDING ELEVATIONS - BUILDING C NORTH / SOUTH	
ISSUE DATE: 11/20/24	
DRAWN BY:	Author
CHECKED BY:	Checker
PROJECT No:	--

A4.1.1C



1 BUILDING C - NORTH
1/16" = 1'-0"



2 BUILDING C - SOUTH
1/16" = 1'-0"

MATERIALS

REFERENCE KEYNOTES

GENERAL DRAWING NOTES

MISC. ARCHITECTURAL ELEMENTS

- STEEL CANOPY** - BLACKENED STEEL MEMBERS W/ CLEAR COAT FINISH.
SOFFIT CONDITION OVER ENTRANCES TO BE WOOD PANEL PURA NFC LUMEN AND WOOD DECORS WESTERN RED CEDAR
- METAL PANEL** - ALUCOBOND USA METAL PANEL OVER METAL STUD BACKING. LOCATIONS AT MAIN ENTRIES. FINISH NATIVE COPPER MICA
- SHADING DEVICE** - VERTICAL FIN. LOCATIONS AT ALL NON-ENTRANCE AND TRUCK COURT WINDOWS. FINISH TO MATCH [MP] (NATIVE COPPER MICA)

REVEAL KEY

- DESCRIPTION:**
V-GROOVE REVEAL SPACED AT 2" ON CENTER
- SECTION VIEW:** **ELEVATION VIEW:**
- ELEVATION VIEW:**
- [RP-1] [RP-2]
* TO BE PAINTED [P2] * TO BE PAINTED [P3]

EXTERIOR WALLS

- EXTERIOR WALL KEY:**
- [C1] **CONCRETE TILT PANEL** W/ VERTICAL AND HORIZONTAL V-GROOVE REVEALS - PAINTED.
- REFER TO REVEAL KEY, TILT WALL COORDINATION PLAN, AND A5.3.1 FOR TYPICAL DETAILS.

GLAZING / LOUVERS

- GLAZING KEY:**
- MATERIAL:** **DESCRIPTION:**
- FRAMES:** 2"x6", 2"x4-1/2" BLACK ANODIZED (AB-8) ALUMINUM STOREFRONT
- GLAZING:** SOLARBAN 60, 1" INSULATED GLAZING LOW-E SOLARCOOL SOLARGRAY
- NOTE:** ALL GLAZING TO COMPLY WITH IBC 2406.
- GLAZING ELEVATION KEY:**
- [G1] [G2] [G3]

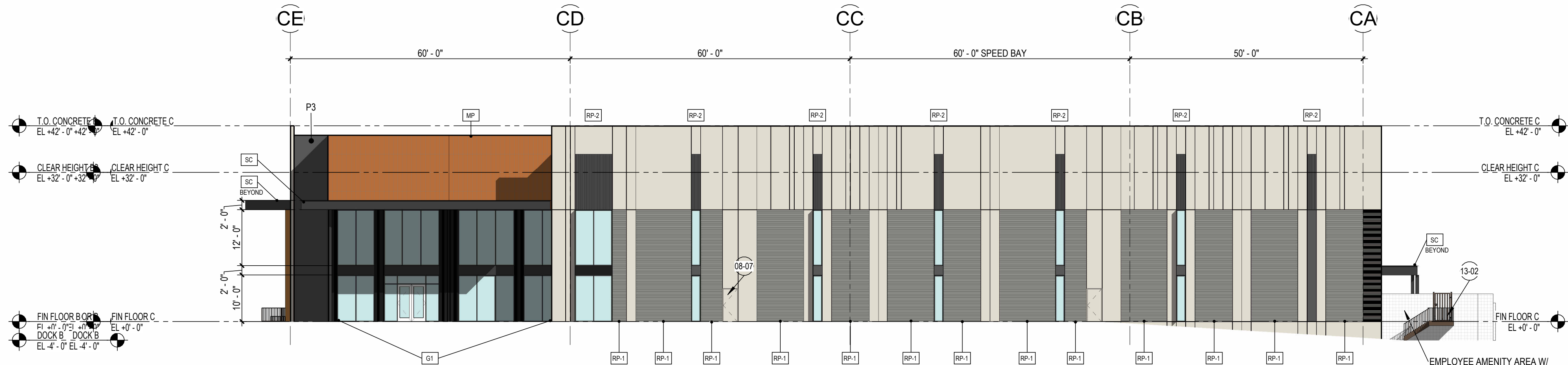
PAINT

- PAINTING NOTES:**
- PAINTER TO PROVIDE FOUR COLOR SCHEME WITH ALL DECORATIVE BANKS MASKED AND PAINTED IN COLORS TO BE SELECTED
 - SEALANTS FOR THE PROJECT TO MATCH ADJACENT MATERIAL COLOR - NO WHITE OR OFF WHITE COLORS.
 - PAINTER TO PREPARE SAMPLES WITH APPROPRIATE COLOR TO BE APPROVED BY OWNER PRIOR TO APPLICATION ON BUILDING FACADES.
 - PAINTER TO PROVIDE TWO COATS OF SEALER TO ALL EXPOSED NATURAL BLOCK, PRECAST CONCRETE, UNPAINTED CONCRETE AND OTHER MATERIALS AS REQUIRED TO PROVIDE A WEATHER SEALED PROJECT.
 - COORDINATE PAINT WITH ALL SIDES AND TURN-BACKS OF TILT WALL PANELS
- PAINT KEY:**
KEY: DESCRIPTION:
- [P1] SHERWIN WILLIAMS 'OYSTER WHITE' # SW7637 (LRV 72)
- [P2] SHERWIN WILLIAMS 'INTELLECTUAL GRAY' # SW7045 (LRV 39)
- [P3] SHERWIN WILLIAMS 'URBANE BRONZE' # SW7048 (LRV 10)

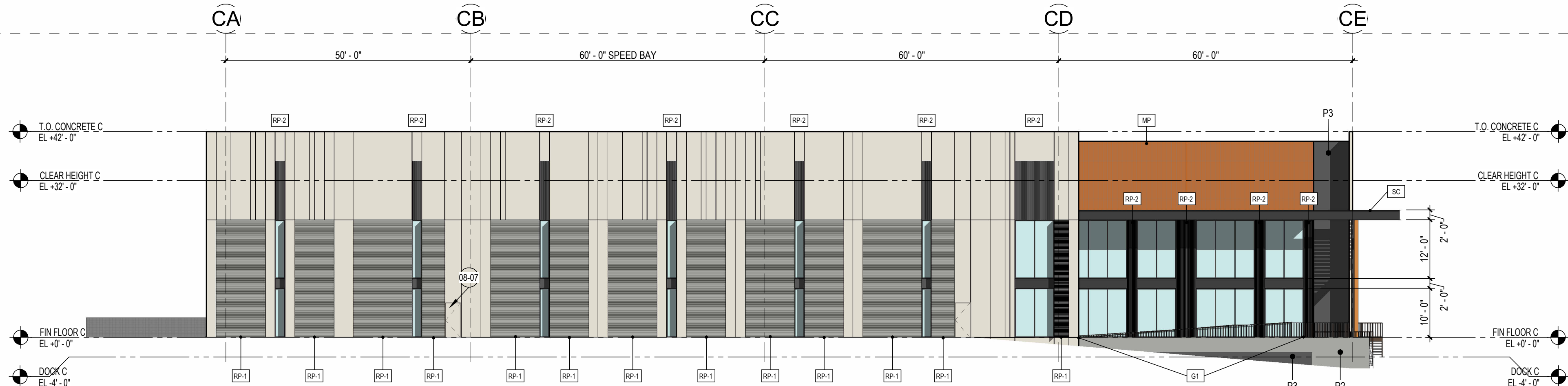
- 03-07 CONCRETE DOCK RAMP. REFER TO SITE DETAILS, AND COORDINATE WITH STRUCTURE & CIVIL DRAWINGS. DOCK RAMPS TO RECEIVE (2) BOLLARDS ALIGNED WITH CENTERLINE OF HANDRAIL FOR PROTECTION
- 08-02 9'-0"x10'-0" HIGH LIFT OVERHEAD DOOR. REFER TO DOOR SCHEDULE FOR MORE INFO.
- 08-04 14'-0"x16'-0" HIGH LIFT OVERHEAD DOOR. REFER TO DOOR SCHEDULE FOR MORE INFO. OVERHEAD DOORS TO RECEIVE (2) BOLLARDS ON INTERIOR SIDE, ALIGNED WITH DOOR OPENING FOR PROTECTION
- 08-07 EXTERIOR DOOR & FRAME. REFER TO DOOR SCHEDULE FOR MORE INFO.
- 13-01 EXTERIOR STAIRS W/ LANDING. 42" HIGH GUARDRAIL, & 36" HIGH HANDRAILS. ALL STAIRS IN TRUCK COURT LOCATIONS TO RECEIVE (2) BOLLARDS ALIGNED WITH CENTERLINE OF HANDRAIL FOR PROTECTION
- 13-02 EXTERIOR STAIRS W/ LANDING. 42" HIGH GUARDRAIL, & 36" HIGH HANDRAILS. COORDINATE FINAL LOCATIONS WITH GRADING - REF. CIVIL. MAX RISER DEPTH NOT TO EXCEED 7". RISERS DIMENSIONS TO REMAIN EQUAL. MAX TREAD DEPTH NOT TO EXCEED 11". TREAD DIMENSIONS TO REMAIN EQUAL. STAIR STRINGERS AND RAILS TO MATCH WEATHERING STEEL FINISH.

- A. REFER TO THE A0.X SERIES DRAWINGS FOR ARCHITECTURAL GENERAL NOTES, MATERIAL SYMBOLS, ABBREVIATIONS, AND DIMENSIONING CONVENTIONS USED ON THIS DRAWING.
- B. REFER TO AND COORDINATE WITH STRUCTURAL, MECHANICAL, PLUMBING, AND ELECTRICAL DRAWINGS FOR ADDITIONAL INFORMATION NOT SHOWN ON THIS DRAWING.
- C. REFER TO AND COORDINATE WITH CIVIL DRAWINGS FOR ALL FINISH GRADES.
- D. REFER TO A4.X.X SERIES DRAWINGS FOR ENLARGED EXTERIOR ELEVATIONS, BUILDING SECTIONS, TILT WALL ELEVATIONS, & WALL SECTIONS
- E. REFER TO A9.2.X SERIES DRAWINGS FOR DOOR, GLAZING & LOUVER SCHEDULES, ELEVATIONS & DETAILS

1 BUILDING C - EAST
1/16" = 1'-0"



2 BUILDING C - WEST
1/16" = 1'-0"



MATERIALS

REFERENCE KEYNOTES

GENERAL DRAWING NOTES

MISC. ARCHITECTURAL ELEMENTS

- SC** STEEL CANOPY - BLACKENED STEEL MEMBERS W/ CLEAR COAT FINISH.
SOFFIT CONDITION OVER ENTRANCES TO BE WOOD PANEL PURA NFC LUMEN AND WOOD DECORS WESTERN RED CEDAR
- MP** METAL PANEL - ALUCOBOND USA METAL PANEL OVER METAL STUD BACKING. LOCATIONS AT MAIN ENTRIES. FINISH NATIVE COPPER MICA
- SD** SHADING DEVICE - VERTICAL FIN. LOCATIONS AT ALL NON-ENTRANCE AND TRUCK COURT WINDOWS. FINISH TO MATCH [MP] (NATIVE COPPER MICA)

EXTERIOR WALLS

- EXTERIOR WALL KEY:**
- G1** CONCRETE TILT PANEL W/ VERTICAL AND HORIZONTAL V-GROOVE REVEALS - PAINTED.
REFER TO REVEAL KEY, TILT WALL COORDINATION PLAN, AND A5.3.1 FOR TYPICAL DETAILS.

GLAZING / LOUVERS

- GLAZING KEY:**
- MATERIAL: DESCRIPTION:
- FRAMES 2"x6", 2"x4-1/2" BLACK ANODIZED (AB-8) ALUMINUM STOREFRONT
- GLAZING
- G1** SOLARBAN 60, 1" INSULATED GLAZING LOW-E SOLARCOOL SOLARGRAY
- NOTE: ALL GLAZING TO COMPLY WITH IBC 2406.
- GLAZING ELEVATION KEY:**
- W1**

PAINT

- PAINTING NOTES:**
 - 1. PAINTER TO PROVIDE FOUR COLOR SCHEME WITH ALL DECORATIVE BANKS MASKED AND PAINTED IN COLORS TO BE SELECTED
 - 2. SEALANTS FOR THE PROJECT TO MATCH ADJACENT MATERIAL COLOR - NO WHITE OR OFF WHITE COLORS.
 - 3. PAINTER TO PREPARE SAMPLES WITH APPROPRIATE COLOR TO BE APPROVED BY OWNER PRIOR TO APPLICATION ON BUILDING FACADES.
 - 4. PAINTER TO PROVIDE TWO COATS OF SEALER TO ALL EXPOSED NATURAL BLOCK, PRECAST CONCRETE, UNPAINTED CONCRETE AND OTHER MATERIALS AS REQUIRED TO PROVIDE A WEATHER SEALED PROJECT.
 - 5. COORDINATE PAINT WITH ALL SIDES AND TURN-BACKS OF TILT WALL PANELS
- PAINT KEY:** KEY: DESCRIPTION:
 - P1** SHERWIN WILLIAMS 'OYSTER WHITE' # SW7637 (LRV 72)
 - P2** SHERWIN WILLIAMS 'INTELLECTUAL GRAY' # SW7045 (LRV 39)
 - P3** SHERWIN WILLIAMS 'URBANE BRONZE' # SW7048 (LRV 10)

- 08-07 EXTERIOR DOOR & FRAME. REFER TO DOOR SCHEDULE FOR MORE INFO.
- 13-02 EXTERIOR STAIRS W/ LANDING, 42" HIGH GUARDRAIL & 36" HIGH HANDRAILS - COORDINATE FINAL LOCATIONS WITH GRADING - REF. CIVIL. MAX RISER DEPTH NOT TO EXCEED 7". RISERS DIMENSIONS TO REMAIN EQUAL. MAX TREAD DEPTH NOT TO EXCEED 11". TREAD DIMENSIONS TO REMAIN EQUAL. STAIR STRINGERS AND RAILS TO MATCH WEATHERING STEEL FINISH.

THE LOOP
Scottsdale, Arizona

LGE DESIGNBUILD

#	REVISION	DATE

NOT FOR CONSTRUCTION

SHEET TITLE:
EXTERIOR BUILDING ELEVATIONS - BUILDING C EAST / WEST

ISSUE DATE: 11/20/24

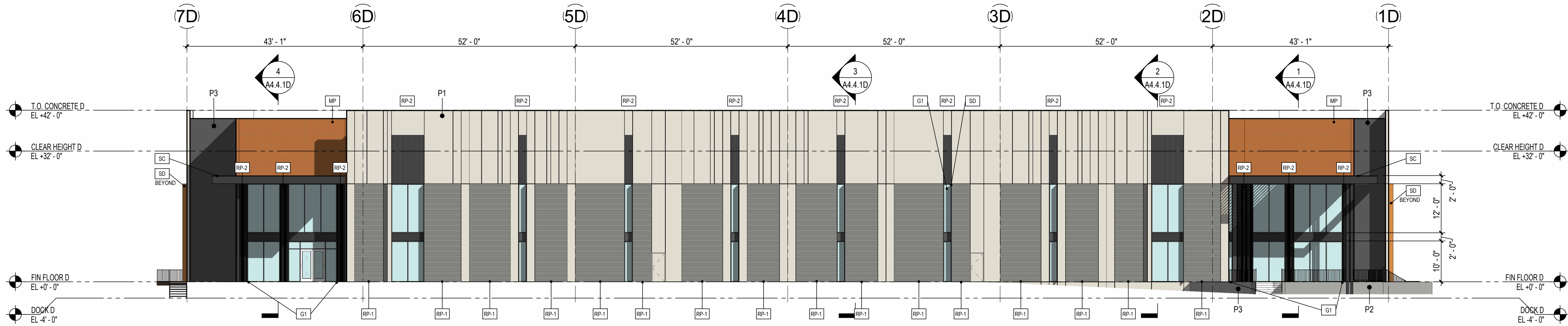
DRAWN BY: LGE DESIGN GROUP

CHECKED BY: --

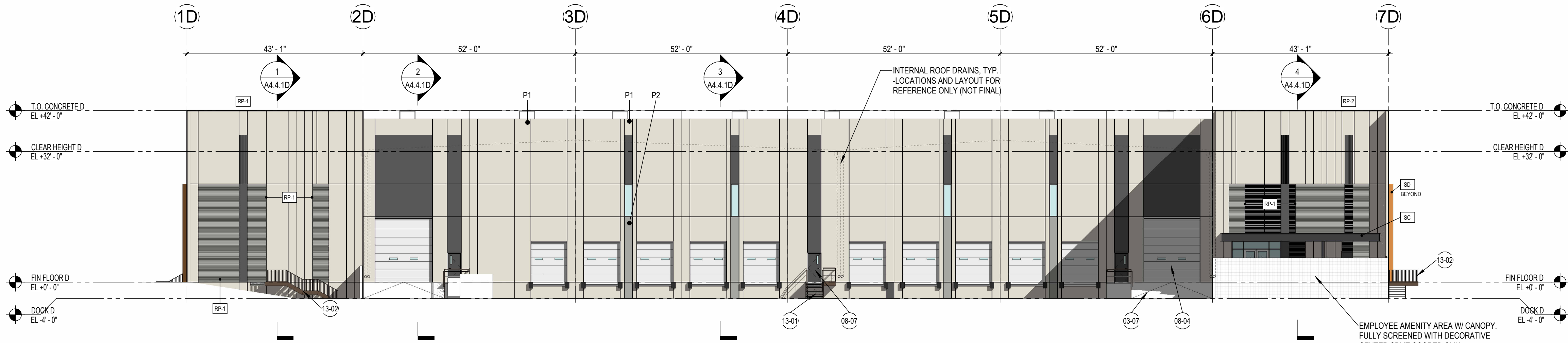
PROJECT No: --

A4.1.2C

1 BUILDING D - NORTH
1/16" = 1'-0"



2 BUILDING D - SOUTH
1/16" = 1'-0"



MATERIALS

MISC. ARCHITECTURAL ELEMENTS

- SC** STEEL CANOPY - BLACKENED STEEL MEMBERS W/ CLEAR COAT FINISH.
- SOFFIT CONDITION OVER ENTRANCES TO BE WOOD PANEL PURA NFC LUMEN AND WOOD DECORS WESTERN RED CEDAR
- MP** METAL PANEL - ALUCCOBOND USA METAL PANEL OVER METAL STUD BACKING. LOCATIONS AT MAIN ENTRIES. FINISH NATIVE COPPER MICA
- SD** SHADING DEVICE - VERTICAL FIN. LOCATIONS AT ALL NON-ENTRANCE AND TRUCK COURT WINDOWS. FINISH TO MATCH **MP** (NATIVE COPPER MICA)

REVEAL KEY

- DESCRIPTION:**
V-GROOVE REVEAL SPACED AT 2" ON CENTER
- SECTION VIEW: ELEVATION VIEW:
- ELEVATION VIEW:
- RP-1** *TO BE PAINTED **P2**
- RP-2** *TO BE PAINTED **P3**

EXTERIOR WALLS

- EXTERIOR WALL KEY:**
- G1** CONCRETE TILT PANEL W/ VERTICAL AND HORIZONTAL V-GROOVE REVEALS - PAINTED.
- REFER TO REVEAL KEY, TILT WALL COORDINATION PLAN, AND A5.3.1 FOR TYPICAL DETAILS.

GLAZING / LOUVERS

- GLAZING KEY:**
- MATERIAL: DESCRIPTION:
- FRAMES 2"x6", 2"x4-1/2" BLACK ANODIZED (AB-8) ALUMINUM STOREFRONT
- GLAZING
- G1** SOLARBAN 60, 1" INSULATED GLAZING LOW-E SOLARCOOL SOLARGRAY
- NOTE: ALL GLAZING TO COMPLY WITH IBC 2406.
- GLAZING ELEVATION KEY:**
- W3**

PAINT

- PAINTING NOTES:**
1. PAINTER TO PROVIDE FOUR COLOR SCHEME WITH ALL DECORATIVE BANKS MASKED AND PAINTED IN COLORS TO BE SELECTED
2. SEALANTS FOR THE PROJECT TO MATCH ADJACENT MATERIAL COLOR - NO WHITE OR OFF WHITE COLORS.
3. PAINTER TO PREPARE SAMPLES WITH APPROPRIATE COLOR TO BE APPROVED BY OWNER PRIOR TO APPLICATION ON BUILDING FACADES.
4. PAINTER TO PROVIDE TWO COATS OF SEALER TO ALL EXPOSED NATURAL BLOCK, PRECAST CONCRETE, UNPAINTED CONCRETE AND OTHER MATERIALS AS REQUIRED TO PROVIDE A WEATHER SEALED PROJECT.
5. COORDINATE PAINT WITH ALL SIDES AND TURN-BACKS OF TILT WALL PANELS
- PAINT KEY:**
KEY: DESCRIPTION:
- P1** SHERWIN WILLIAMS 'OYSTER WHITE' # SW7637 (LRV 72)
- P2** SHERWIN WILLIAMS 'INTELLECTUAL GRAY' # SW7045 (LRV 39)
- P3** SHERWIN WILLIAMS 'URBANE BRONZE' # SW7048 (LRV 10)

REFERENCE KEYNOTES

- 03-07 CONCRETE DOCK RAMP, REFER TO SITE DETAILS, AND COORDINATE WITH STRUCTURE & CIVIL DRAWINGS. DOCK RAMPS TO RECEIVE (2) BOLLARDS ALIGNED WITH CENTERLINE OF HANDRAIL FOR PROTECTION
- 08-04 14'-0"x16'-0" HIGH LIFT OVERHEAD DOOR, REFER TO DOOR SCHEDULE FOR MORE INFO. OVERHEAD DOORS TO RECEIVE (2) BOLLARDS ON INTERIOR SIDE, ALIGNED WITH DOOR OPENING FOR PROTECTION.
- 08-07 EXTERIOR DOOR & FRAME. REFER TO DOOR SCHEDULE FOR MORE INFO.
- 13-01 EXTERIOR STAIRS W/ LANDING, 42" HIGH GUARDRAIL, & 36" HIGH HANDRAILS. ALL STAIRS IN TRUCK COURT LOCATIONS TO RECEIVE (2) BOLLARDS ALIGNED WITH CENTERLINE OF HANDRAIL FOR PROTECTION.
- 13-02 EXTERIOR STAIRS W/ LANDING, 42" HIGH GUARDRAIL, & 36" HIGH HANDRAILS - COORDINATE FINAL LOCATIONS WITH GRADING - REF. CIVIL. MAX RISER DEPTH NOT TO EXCEED 7". RISERS DIMENSIONS TO REMAIN EQUAL. MAX TREAD DEPTH NOT TO EXCEED 11". TREAD DIMENSIONS TO REMAIN EQUAL. STAIR STRINGERS AND RAILS TO MATCH WEATHERING STEEL FINISH.

GENERAL DRAWING NOTES

- A. REFER TO THE A0.X SERIES DRAWINGS FOR ARCHITECTURAL GENERAL NOTES, MATERIAL SYMBOLS, ABBREVIATIONS, AND DIMENSIONING CONVENTIONS USED ON THIS DRAWING.
- B. REFER TO AND COORDINATE WITH STRUCTURAL, MECHANICAL, PLUMBING, AND ELECTRICAL DRAWINGS FOR ADDITIONAL INFORMATION NOT SHOWN ON THIS DRAWING.
- C. REFER TO AND COORDINATE WITH CIVIL DRAWINGS FOR ALL FINISH GRADES.
- D. REFER TO A4.X.X SERIES DRAWINGS FOR ENLARGED EXTERIOR ELEVATIONS, BUILDING SECTIONS, TILT WALL ELEVATIONS, & WALL SECTIONS
- E. REFER TO A9.2.X SERIES DRAWINGS FOR DOOR, GLAZING & LOUVER SCHEDULES, ELEVATIONS & DETAILS

THE LOOP

Scottsdale, Arizona

LGE DESIGNBUILD

#	REVISION	DATE

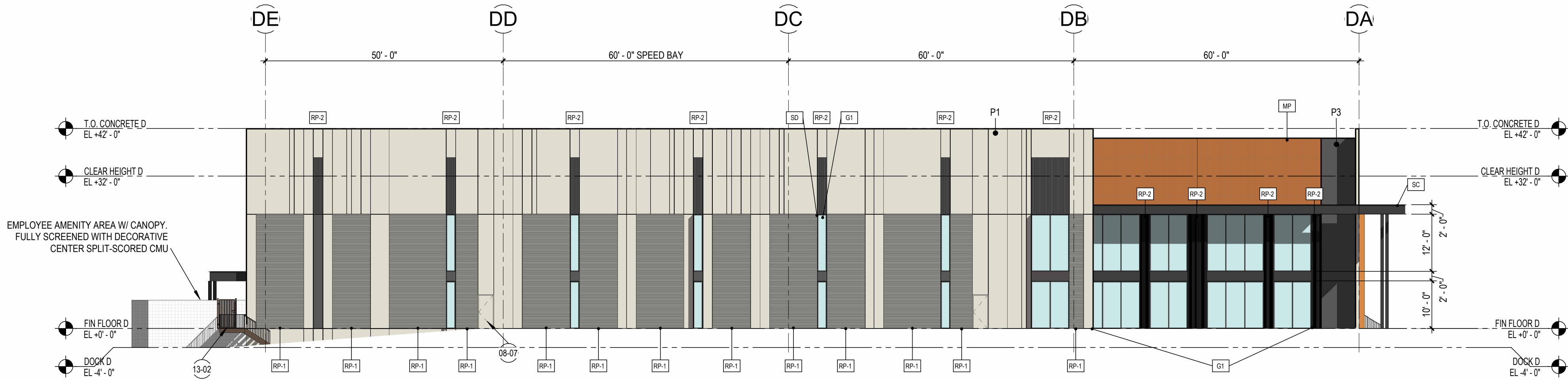
SHEET TITLE: EXTERIOR BUILDING ELEVATIONS - BUILDING D NORTH / SOUTH	
ISSUE DATE:	11/20/24
DRAWN BY:	Author
CHECKED BY:	Checker
PROJECT No:	--

NOT FOR CONSTRUCTION

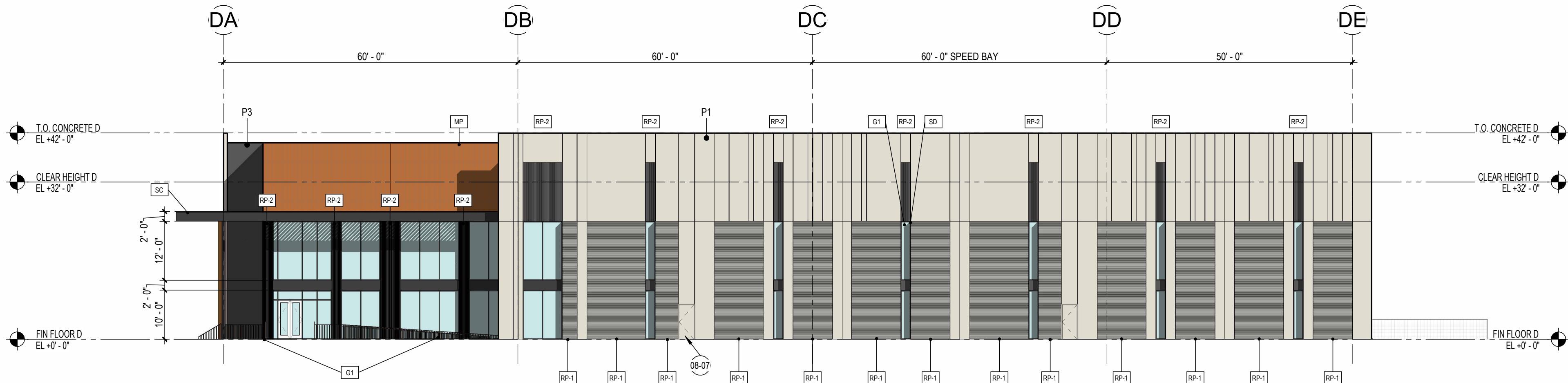
A4.1.1D

LGE DESIGNGROUP
1200 N. 52nd Street • Phoenix, AZ • 85008
P. 480.966.4001

1 BUILDING D - EAST
1/16" = 1'-0"



2 BUILDING D - WEST
1/16" = 1'-0"



MATERIALS

REFERENCE KEYNOTES

GENERAL DRAWING NOTES

MISC. ARCHITECTURAL ELEMENTS

- SC** STEEL CANOPY - BLACKENED STEEL MEMBERS W/ CLEAR COAT FINISH.
- SOFFIT CONDITION OVER ENTRANCES TO BE WOOD PANEL PURA NFC LUMEN AND WOOD DECORS WESTERN RED CEDAR
- MP** METAL PANEL - ALUCOBOND USA METAL PANEL OVER METAL STUD BACKING. LOCATIONS AT MAIN ENTRIES. FINISH NATIVE COPPER MICA
- SD** SHADING DEVICE - VERTICAL FIN. LOCATIONS AT ALL NON-ENTRANCE AND TRUCK COURT WINDOWS. FINISH TO MATCH **MP** (NATIVE COPPER MICA)

REVEAL KEY

DESCRIPTION:
V-GROOVE REVEAL SPACED AT 2" ON CENTER

SECTION VIEW: ELEVATION VIEW:

ELEVATION VIEW:

RP-1 *TO BE PAINTED P2

RP-2 *TO BE PAINTED P3

EXTERIOR WALLS

- EXTERIOR WALL KEY:**
- G1** CONCRETE TILT PANEL W/ VERTICAL AND HORIZONTAL V-GROOVE REVEALS - PAINTED.
- REFER TO REVEAL KEY, TILT WALL COORDINATION PLAN, AND A5.3.1 FOR TYPICAL DETAILS.

GLAZING / LOUVERS

GLAZING KEY:

MATERIAL: DESCRIPTION:

FRAMES 2"x6", 2"x4-1/2" BLACK ANODIZED (AB-8) ALUMINUM STOREFRONT

GLAZING

G1 SOLARBAN 60, 1" INSULATED GLAZING LOW-E SOLARCOOL SOLARGRAY

NOTE: ALL GLAZING TO COMPLY WITH IBC 2406.

GLAZING ELEVATION KEY:

W8

PAINT

- PAINTING NOTES:**
1. PAINTER TO PROVIDE FOUR COLOR SCHEME WITH ALL DECORATIVE BANKS MASKED AND PAINTED IN COLORS TO BE SELECTED
2. SEALANTS FOR THE PROJECT TO MATCH ADJACENT MATERIAL COLOR - NO WHITE OR OFF WHITE COLORS.
3. PAINTER TO PREPARE SAMPLES WITH APPROPRIATE COLOR TO BE APPROVED BY OWNER PRIOR TO APPLICATION ON BUILDING FACADES.
4. PAINTER TO PROVIDE TWO COATS OF SEALER TO ALL EXPOSED NATURAL BLOCK, PRECAST CONCRETE, UNPAINTED CONCRETE AND OTHER MATERIALS AS REQUIRED TO PROVIDE A WEATHER SEALED PROJECT.
5. COORDINATE PAINT WITH ALL SIDES AND TURN-BACKS OF TILT WALL PANELS
- PAINT KEY:**
KEY: DESCRIPTION:
- P1** SHERWIN WILLIAMS 'OYSTER WHITE' # SW7637 (LRV 72)
- P2** SHERWIN WILLIAMS 'INTELLECTUAL GRAY' # SW7045 (LRV 39)
- P3** SHERWIN WILLIAMS 'URBANE BRONZE' # SW7048 (LRV 10)

- 08-07 EXTERIOR DOOR & FRAME. REFER TO DOOR SCHEDULE FOR MORE INFO.
- 13-02 EXTERIOR STAIRS W/ LANDING, 42" HIGH GUARDRAIL, & 36" HIGH HANDRAILS - COORDINATE FINAL LOCATIONS WITH GRADING - REF. CIVIL. MAX RISER DEPTH NOT TO EXCEED 7". RISERS DIMENSIONS TO REMAIN EQUAL. MAX TREAD DEPTH NOT TO EXCEED 11". TREAD DIMENSIONS TO REMAIN EQUAL. STAIR STRINGERS AND RAILS TO MATCH WEATHERING STEEL FINISH.

- A. REFER TO THE A0.X SERIES DRAWINGS FOR ARCHITECTURAL GENERAL NOTES, MATERIAL SYMBOLS, ABBREVIATIONS, AND DIMENSIONING CONVENTIONS USED ON THIS DRAWING.
- B. REFER TO AND COORDINATE WITH STRUCTURAL, MECHANICAL, PLUMBING, AND ELECTRICAL DRAWINGS FOR ADDITIONAL INFORMATION NOT SHOWN ON THIS DRAWING.
- C. REFER TO AND COORDINATE WITH CIVIL DRAWINGS FOR ALL FINISH GRADES.
- D. REFER TO A4.X.X SERIES DRAWINGS FOR ENLARGED EXTERIOR ELEVATIONS, BUILDING SECTIONS, TILT WALL ELEVATIONS, & WALL SECTIONS
- E. REFER TO A9.2.X SERIES DRAWINGS FOR DOOR, GLAZING & LOUVER SCHEDULES, ELEVATIONS & DETAILS

THE LOOP
Scottsdale, Arizona

LGE DESIGNBUILD

#	REVISION	DATE

NOT FOR CONSTRUCTION

SHEET TITLE:	EXTERIOR BUILDING ELEVATIONS - BUILDING D EAST / WEST
ISSUE DATE:	11/20/24
DRAWN BY:	Author
CHECKED BY:	Checker
PROJECT No:	--

A4.1.2D